

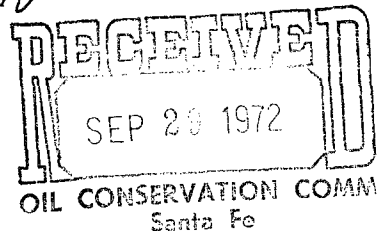
NORTH AMERICAN EXPLORATION CORP.

FIRST STATE BANK BUILDING
ABILENE, TEXAS 79604

AC 915-672-5961

POST OFFICE BOX 23

September 27, 1972



Mr. A. L. Porter, Jr.
New Mexico Oil Conservation Comm.
P. O. Box 2088
Santa Fe, New Mexico 87501

Dear Mr. Porter:

Enclosed is an acreage ~~plot~~ on the Tesoro Petroleum Corporation #1 Double Ought, #1N12226W, Sandoval County, New Mexico, showing lease ownership in Section 12, T22N R6W. The State of New Mexico owns all royalty in Section 12.

You will note that the subject well is 1045 feet from the south line, which is only 275 feet from the north 40 acre line. This well has been completed as a Gallup Sand Oil Well at a depth of 5300 to 5365 feet.

This location was drilled with irregular spacing because of the cliff shown on the attached U. S. G. S. Topographical Map shot, and no other legal location was economically possible on the 40 acre unit. It is requested that you approve an exception to Statewide Rule 104, in order that this well may be granted an oil allowable.

Very truly yours,

NORTH AMERICAN EXPLORATION CORP.

Gordon H. Gray
Gordon H. Gray

GHG/kj

cc: Mr. Emery Arnold

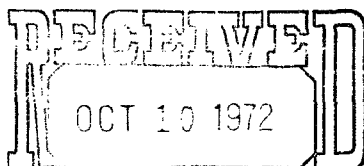
Handwritten notes:
104 F
issue date of application
20 days from
issued notified
Top OK
issue Oct. 17, 1972

NORTH AMERICAN EXPLORATION CORP.

FIRST STATE BANK BUILDING
ABILENE, TEXAS 79604

POST OFFICE BOX 23

September 27, 1972

OIL CONSERVATION COMM.
Santa FeTenneco Oil Company
Suite 1200
Lincoln Tower Building
Denver, Colorado 80203

Attn: Mr. M. E. Boler

Gentlemen:

Enclosed is a plat and copy of a request to the New Mexico Oil Conservation Commission for a spacing exception request on the #1 Double Ought.

This well has been completed as a commercial Gallup oil well, and will be too close to a 40 acre line for statewide spacing. The irregular location was necessary due to terrain. As offset operators, we are notifying you of this request.

Very truly yours,

NORTH AMERICAN EXPLORATION CORP.

Gordon H. Gray
Gordon H. Gray

GHG/kj

Encls.

cc: N. M. O. C. C.



OIL CONSERVATION COMMISSION
3 DISTRICT

OIL CONSERVATION COMMISSION
BOX 2088
SANTA FE, NEW MEXICO

DATE 10-5-72

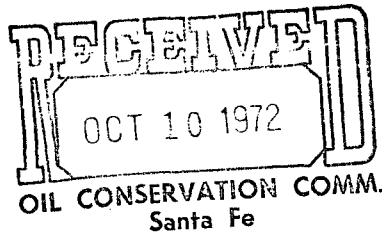
Re: Proposed NSP _____

Proposed NWU _____

Proposed NSL ✓

Proposed NFO _____

Proposed MC ✓



Gentlemen:

I have examined the application dated 9-27-72

for the Tesoro Petroleum Corp Double Dought #1 1045/s 1495/w 12-22N-6W
Operator Lease and Well No. S-T-R

and my recommendations are as follows:

Topography Verified, approve

Yours very truly,

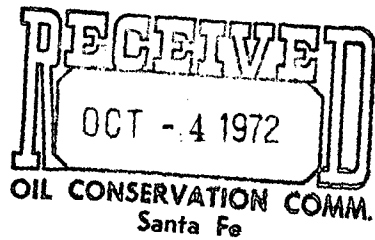
Emory C. Clark

AC 915-672-5961

NORTH AMERICAN EXPLORATION CORP.
FIRST STATE BANK BUILDING
ABILENE, TEXAS 79604

POST OFFICE BOX 23

October 2, 1972



Mr. George M. Hatch
New Mexico Oil Conservation Comm.
P. O. Box 2088
Santa Fe, New Mexico 87501

Dear Mr. Hatch:

Enclosed is a copy of notice to Tenneco Oil Company concerning our application for spacing exception on the Tesoro #1 Double Ought, Sandoval County, New Mexico.

This notice was given to Tenneco on September 27, 1972.

Very truly yours,

NORTH AMERICAN EXPLORATION CORP.

Gordon H. Gray
Gordon H. Gray

GHG/kj

Encl.

Very truly yours,

GEORGE M. HATCH
Attorney

GMH/dr

OIL CONSERVATION COMMISSION

P. O. BOX 2088

SANTA FE, NEW MEXICO 87501

September 29, 1972

C
O
P
Y

North American Exploration Corp.
First State Bank Building
Abilene, Texas 79604

Attention: Mr. Gordon H. Gray

Re: Unorthodox well location,
1045 feet from the South line
and 1695 feet from the West
line, Section 12, Township 22
North, Range 6 West, Undesig-
nated Gallup Oil Pool,
Sandoval County, New Mexico

Gentlemen:

Please furnish this office a statement that
Tenneco Oil Company has been notified of your applica-
tion and the date of such notification.

Very truly yours,

GEORGE M. HATCH
Attorney

GMH/dr

NEW MEXICO OIL CONSERVATION COMMISSION WELL LOCATION AND ACERAGE DEDICATION PLAT

All distances must be from the outer boundaries of the Section

Operator NORTH AMERICAN EXPLORATION COMPANY			Lease DOUBLE OUGHT		Well No. 1
Unit Letter & TESORO PETROLEUM CORPORATION			Range 6 WEST	County SANDOVAL	
Section 12	Township 22 NORTH				
Actual Footage Location of Well: 1045 feet from the SOUTH line and 1695 feet from the WEST line			Dedicated Acreage: 40 Acres		
Ground Level Elev. 7061.0	Producing Formation Welp		Pool WC		

1. Outline the acreage dedicated to the subject well by colored pencil or hachure marks on the plat below.
2. If more than one lease is dedicated to the well, outline each and identify the ownership thereof (both as to working interest and royalty).
3. If more than one lease of different ownership is dedicated to the well, have the interests of all owners been consolidated by communitization, unitization, force-pooling, etc?
☐ Yes ☐ No If answer is "yes," type of consolidation _____
 If answer is "no," list the owners and tract descriptions which have actually consolidated. (Use reverse side of this form if necessary.) _____
 No allowable will be assigned to the well until all interests have been consolidated (by communitization, unitization, forced-pooling, or otherwise) or until a non standard unit, eliminating such interests, has been approved by the Commission.

CERTIFICATION

I hereby certify that the information contained herein is true and complete to the best of my knowledge and belief.

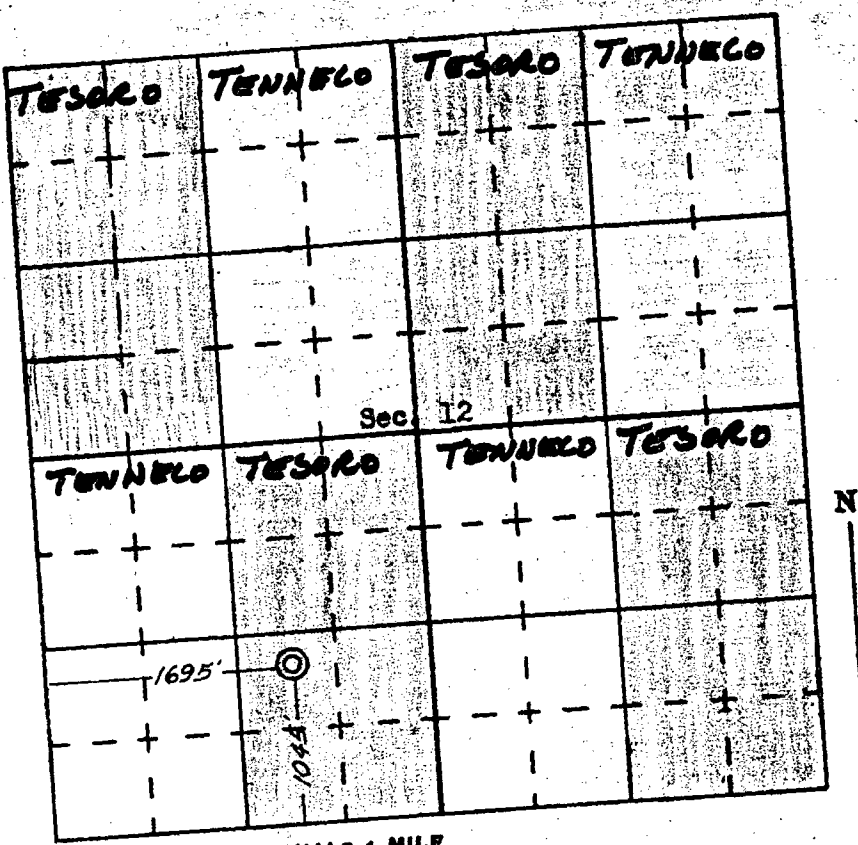
Name _____

Position _____

Company _____

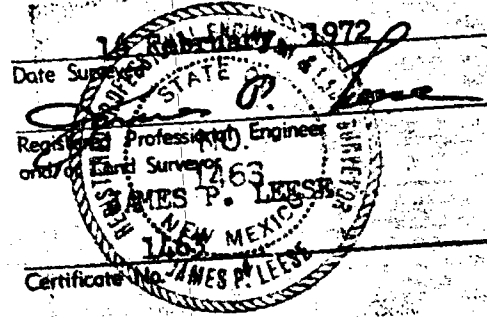
Date _____

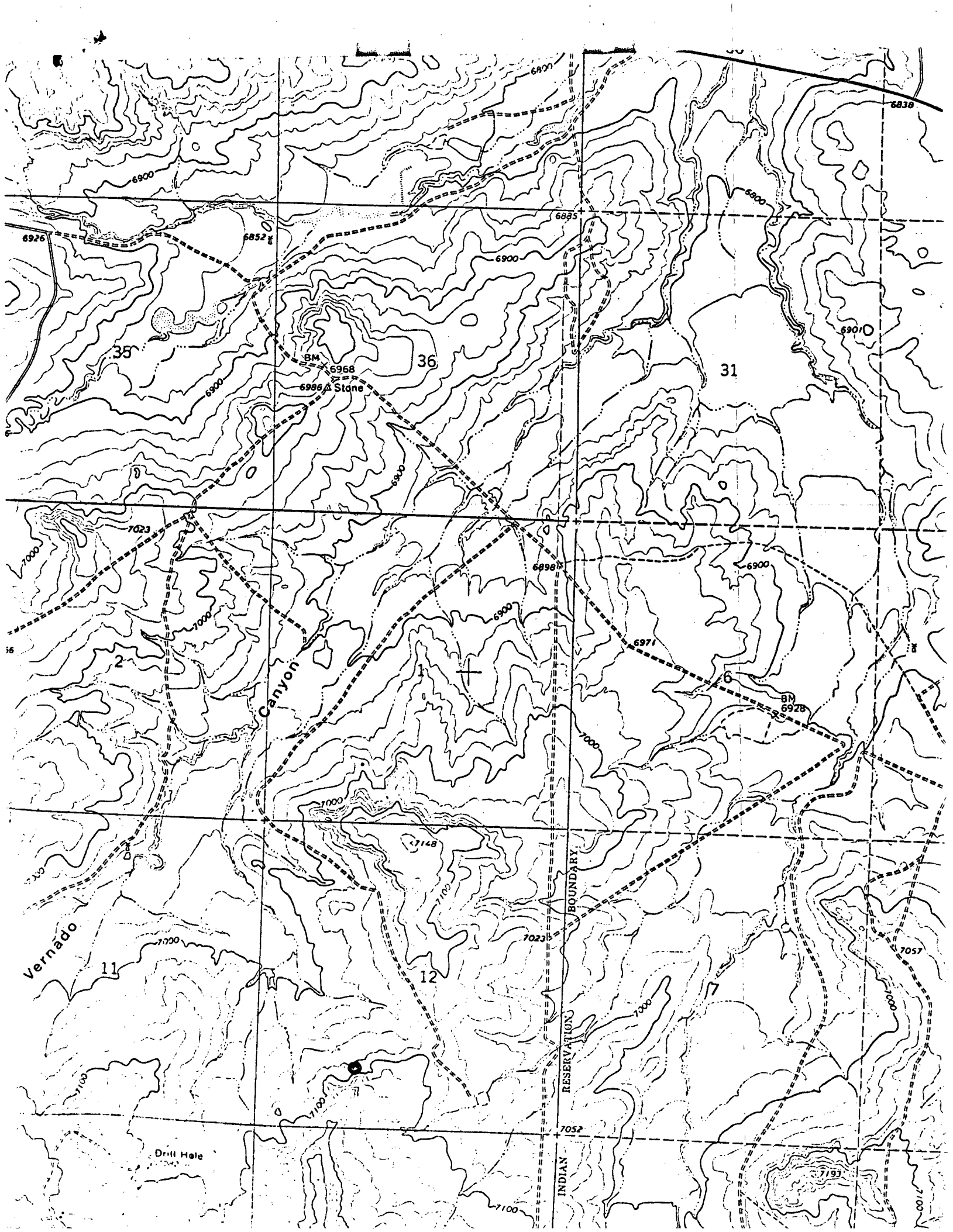
I hereby certify that the well location shown on this plat was plotted from field notes of actual surveys made by me or under my supervision, and that the same is true and correct to the best of my knowledge and belief.



SCALE—4 INCHES EQUALS 1 MILE

SAN JUAN ENGINEERING COMPANY, FARMINGTON, N. M.





NEW MEXICO OIL CONSERVATION COMMISSION

WELL LOCATION AND ACERAGE DEDICATION PLAT

All distances must be from the outer boundaries of the Section

Operator NORTH AMERICAN EXPLORATION COMPANY & TESORO PETROLEUM CORPORATION			Lease DOUBLE OUGHT		Well No. 1
Unit Letter N	Section 12	Township 22 NORTH	Range 6 WEST	County SANDOVAL	
Actual Footage Location of Well:					
1045 feet from the SOUTH line and 1695 feet from the WEST line					
Ground Level Elev. 7061.0	Producing Formation Wells	Pool WC	Dedicated Acreage: 40		Acres

1. Outline the acreage dedicated to the subject well by colored pencil or hachure marks on the plat below.
2. If more than one lease is dedicated to the well, outline each and identify the ownership thereof (both as to working interest and royalty).
3. If more than one lease of different ownership is dedicated to the well, have the interests of all owners been consolidated by communitization, unitization, force-pooling, etc?

() Yes () No If answer is "yes," type of consolidation

If answer is "no," list the owners and tract descriptions which have actually consolidated. (Use reverse side of this form if necessary.)

No allowable will be assigned to the well until all interests have been consolidated (by communitization, unitization, forced-pooling, or otherwise) or until a non standard unit, eliminating such interests, has been approved by the Commission.

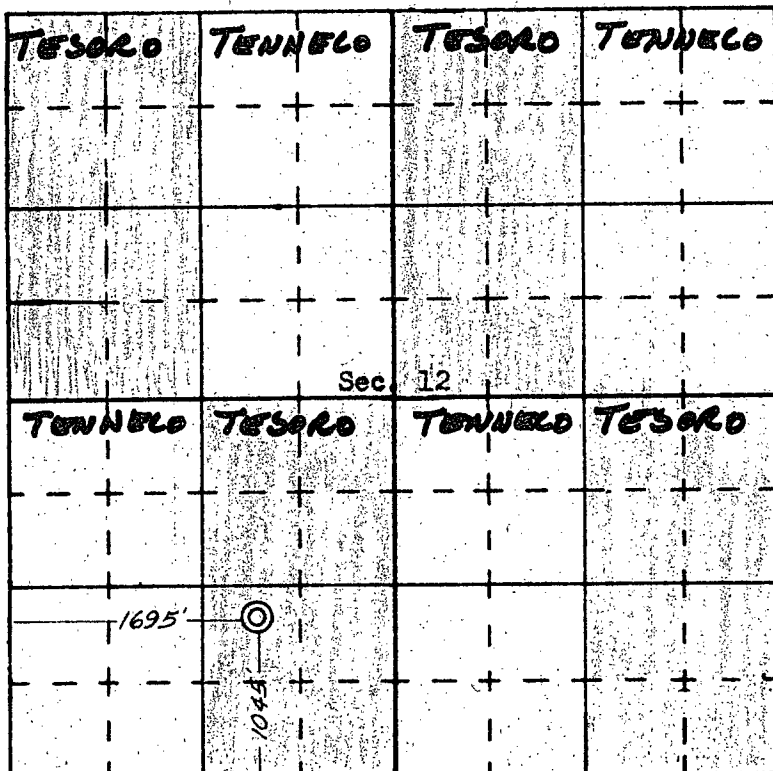
CERTIFICATION

I hereby certify that the information contained herein is true and complete to the best of my knowledge and belief.

Name _____
 Position _____
 Company _____
 Date _____

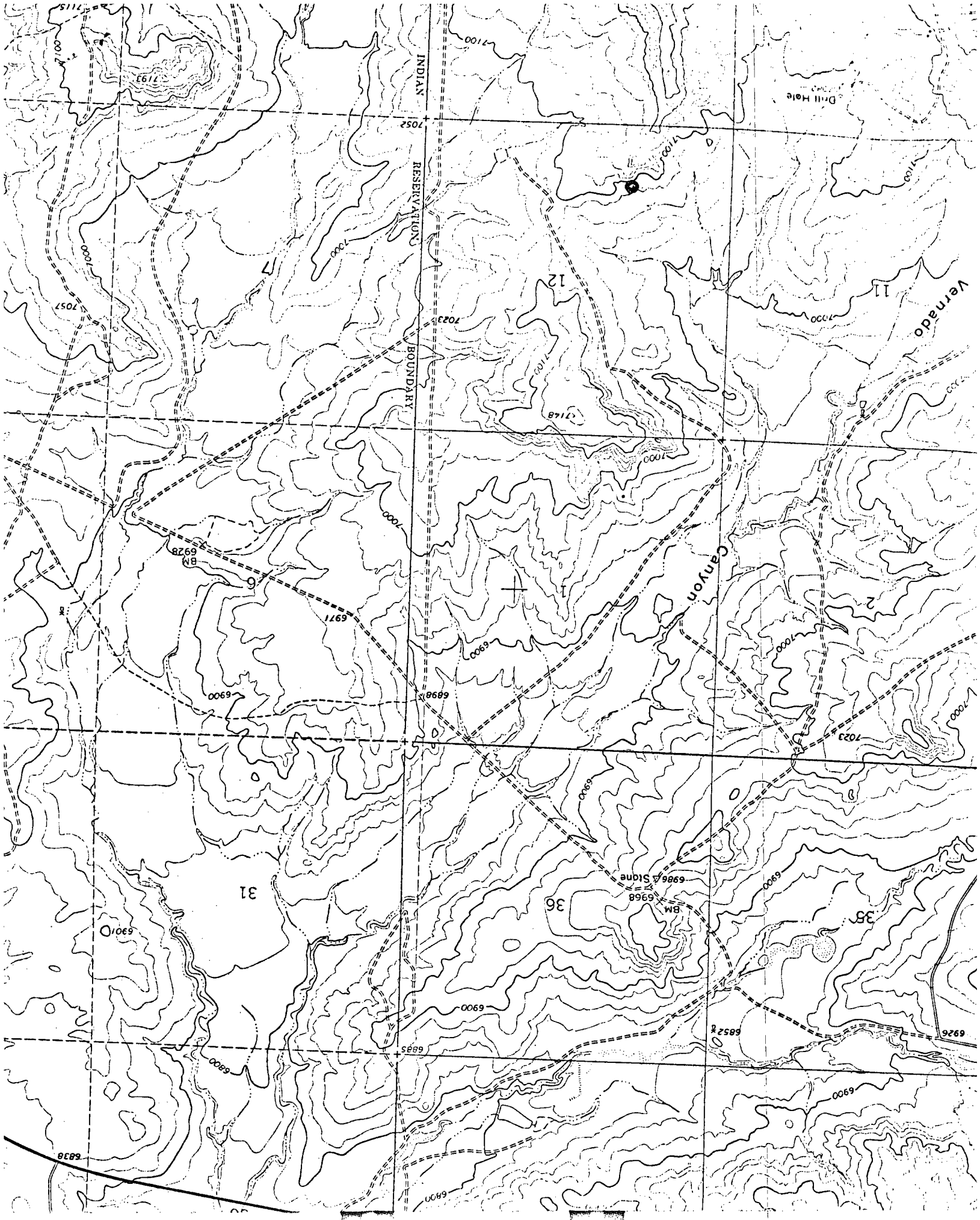
I hereby certify that the well location shown on this plat was plotted from field notes of actual surveys made by me or under my supervision, and that the same is true and correct to the best of my knowledge and belief.

Date Surveyed **16 February, 1972**
 Registered Professional Engineer
 and/or Land Surveyor
JAMES P. LEESE
 No. **1463**
 NEW MEXICO
 Certificate No. **JAMES P. LEESE**



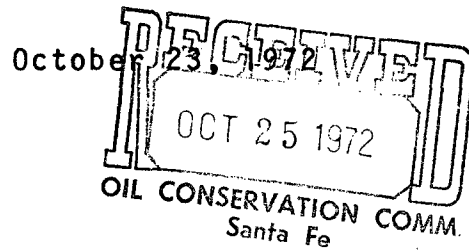
SCALE—4 INCHES EQUALS 1 MILE

SAN JUAN ENGINEERING COMPANY, FARMINGTON, N. M.



TENNECO OIL COMPANY *A Tenneco Company*

SUITE 1200 • LINCOLN TOWER BUILDING • DENVER, COLORADO 80203



Mr. Al Porter, Jr.
New Mexico Oil Conservation Commission
P. O. Box 2088
Santa Fe, New Mexico 87501

File
NSL 579

Dear Mr. Porter:

Tenneco Oil Company offers no objection to North American Exploration Corporation's request for Spacing Exception on the Double Ought No. 1

Very truly yours,

TENNECO OIL COMPANY

A handwritten signature in cursive script, appearing to read "R. A. Williford".

R. A. Williford
District Production Manager

MWB/dw