

*NSL - 695*  
*104 F*  
*No waiting - no offsets*

# AMERICAN QUASAR PETROLEUM CO.

606 VAUGHN BUILDING / MIDLAND / TEXAS 79701 U.S.A. / TELEPHONE (915) 682-3737

TORONTO STOCK EXCHANGE SYMBOL AQPT

NASDAQ SYMBOL AQAS

December 17, 1974

RECEIVED

DEC 18 1974

New Mexico Oil Conservation Commission  
Post Office Drawer DD  
Artesia, New Mexico 88210

O. C. C.  
ARTESIA, OFFICE

Attention: Mr. W. A. Gressett

Re: American Quasar Petroleum Co.  
of New Mexico, Huber State No. 1,  
Section 36, T-23S, R-22E,  
Eddy County, New Mexico

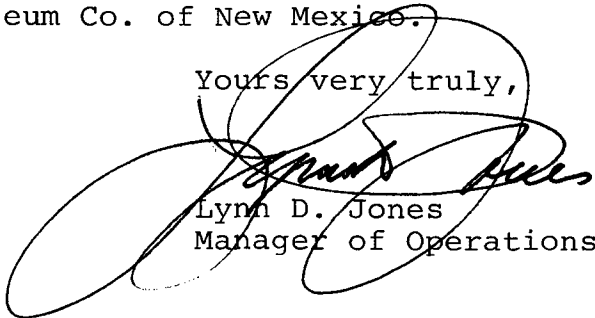
Gentlemen:

The attached Forms C-101 and C-102, copies of an aerial photograph and land plats of the area are submitted in support of our request for administrative approval for an unorthodox location to drill the Huber State No. 1. The well is located 2310' FNL and 2410' FWL of Section 36, T-23S, R-22E, Eddy County, New Mexico.

As shown on the attached land plat, American Quasar Petroleum Co. has either farmed-in or purchased all of the acreage offsetting the 320-acre proration unit and hereby waives any objection to drilling this unorthodox location. The attached copy of an aerial photograph is submitted to support our request for an unorthodox location due to rough terrain in Section 36. The rough terrain prohibits an orthodox location in either the N/2 or W/2 of the section as shown by the cross-hatched areas on the attached aerial photographs.

It is respectfully requested that the Commission forego the 20 day waiting period and grant administrative approval as soon as possible since all offsetting proration or spacing units are currently owned by American Quasar Petroleum Co. of New Mexico.

Yours very truly,

  
Lynn D. Jones  
Manager of Operations

LDJ/st

Enclosures

NO. OF COPIES RECEIVED	
DISTRIBUTION	
SANTA FE	
FILE	
U.S.G.S.	
LAND OFFICE	
OPERATOR	

NEW MEXICO OIL CONSERVATION COMMISSION

**RECEIVED**

DEC 18 1974

Form C-101  
Revised 1-1-65

5A. Indicate Type of Lease STATE <input checked="" type="checkbox"/> FEE <input type="checkbox"/>
5. State Oil & Gas Lease No. 6656
7. Unit Agreement Name
8. Farm or Lease Name Huber State
9. Well No. 1
10. Field and Pool, or Wildcat Wildcat
12. County Eddy
19. Proposed Depth 10,500'
19A. Formation Morrow
20. Rotary or C.T. Rotary
21. Elevations (Show whether DF, RT, etc.) 4410' GL
21A. Kind & Status Plug. Bond Statewide
21B. Drilling Contractor Perlap
22. Approx. Date Work will start 12-25-74

APPLICATION FOR PERMIT TO DRILL, DEEPEN, OR PLUG BACK

1a. Type of Work  
DRILL ☒ DEEPEN ☐ PLUG BACK ☐

b. Type of Well  
OIL WELL ☐ GAS WELL ☒ OTHER ☐ SINGLE ZONE ☒ MULTIPLE ZONE ☐

2. Name of Operator  
American Quasar Petroleum Co. of New Mexico

3. Address of Operator  
606 Vaughn Bldg., Midland, Texas 79701

4. Location of Well  
UNIT LETTER F LOCATED 2310 FEET FROM THE North LINE  
AND 2410 FEET FROM THE West LINE OF SEC. 36 TWP. 23S RGE. 22E NMPM

11. County  
Eddy

23. PROPOSED CASING AND CEMENT PROGRAM

SIZE OF HOLE	SIZE OF CASING	WEIGHT PER FOOT	SETTING DEPTH	SACKS OF CEMENT	EST. TOP
30"	20"	78.60	50'	Readi-Mix	Circ.
17 1/2"	13 3/8"	48	400'	350 sx	Circ.
12 1/4"	8 5/8"	24, 32	2500'	1150 sx	Circ.
7 7/8"	5 1/2"	17	10500'	400 sx	8500

BOP Stack

10" Series 900 Hydril  
Cameron QRC Double - 3000 psi WP

IN ABOVE SPACE DESCRIBE PROPOSED PROGRAM; IF PROPOSAL IS TO DEEPEN OR PLUG BACK, GIVE DATA ON PRESENT PRODUCTIVE ZONE AND PROPOSED NEW PRODUCTIVE ZONE, GIVE BLOWOUT PREVENTER PROGRAM, IF ANY.

I hereby certify that the information above is true and complete to the best of my knowledge and belief.

Signed Frank D. Jones Mgr. of Operations Date 11-12-74

(This space for State Use)

APPROVED BY \_\_\_\_\_ TITLE \_\_\_\_\_ DATE \_\_\_\_\_

CONDITIONS OF APPROVAL, IF ANY:

NEW MEXICO OIL CONSERVATION COMMISSION  
WELL LOCATION AND ACREAGE DEDICATION PLAT

NOV - 4 1974

Form C-102  
Supersedes C-128  
Effective 1-1-65

All distances must be from the outer boundaries of the Section.

Operator <b>AMERICAN QUASAR PETROLEUM CO. OF NEW MEXICO</b>			Lease <b>Huber State</b>		Well No. <b>1</b>
Unit Letter <b>F</b>	Section <b>36</b>	Township <b>23S</b>	Range <b>22E</b>	County <b>Eddy</b>	
Actual Footage Location of Well: <b>2310</b> feet from the <b>North</b> line and <b>2410</b> feet from the <b>West</b> line					
Ground Level Elev. <b>4410</b>	Producing Formation <b>Morrow</b>		Pool <b>Wildcat Morrow</b>		Dedicated Acreage: <b>320</b> Acres

- Outline the acreage dedicated to the subject well by colored pencil or hatchure marks on the plat below.
- If more than one lease is dedicated to the well, outline each and identify the ownership thereof (both as to working interest and royalty).
- If more than one lease of different ownership is dedicated to the well, have the interests of all owners been consolidated by communitization, unitization, force-pooling, etc?

☐ Yes ☐ No If answer is "yes," type of consolidation N/A

**RECEIVED**  
**DEC 18 1974**  
**O.C.C.**  
**ARTESIA, OFFICE**

If answer is "no," list the owners and tract descriptions which have actually been consolidated. (Use reverse side of this form if necessary.) N/A

No allowable will be assigned to the well until all interests have been consolidated (by communitization, unitization, forced-pooling, or otherwise) or until a non-standard unit, eliminating such interests, has been approved by the Commission.

CERTIFICATION

I hereby certify that the information contained herein is true and complete to the best of my knowledge and belief.

Name  
**Lynn D. Jones**

Position  
**Mgr. of Operations**

Company  
**American Quasar Petroleum Co. of New Mexico**

Date  
**November 1, 1974**

I hereby certify that the well location shown on this plat was plotted from field notes of actual surveys made by me or under my supervision, and that the same is true and correct to the best of my knowledge and belief.

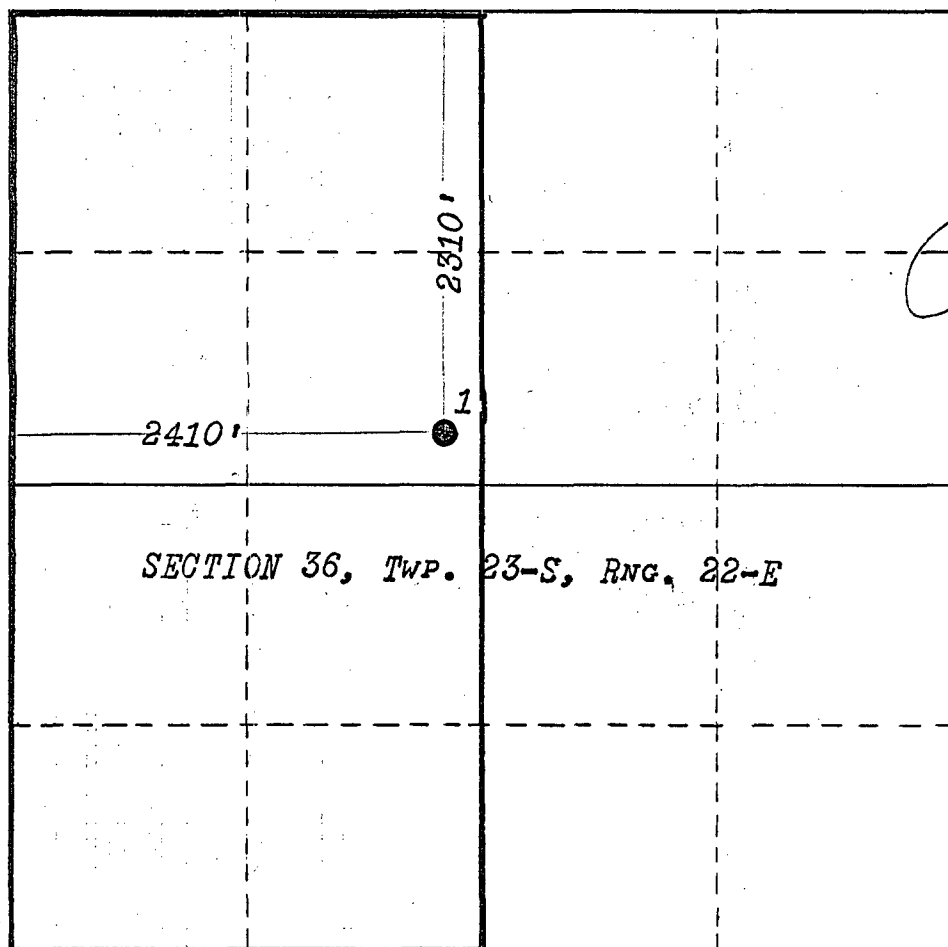
Date Surveyed

**OCT. 29, 1974**

Registered Professional Engineer and/or Land Surveyor

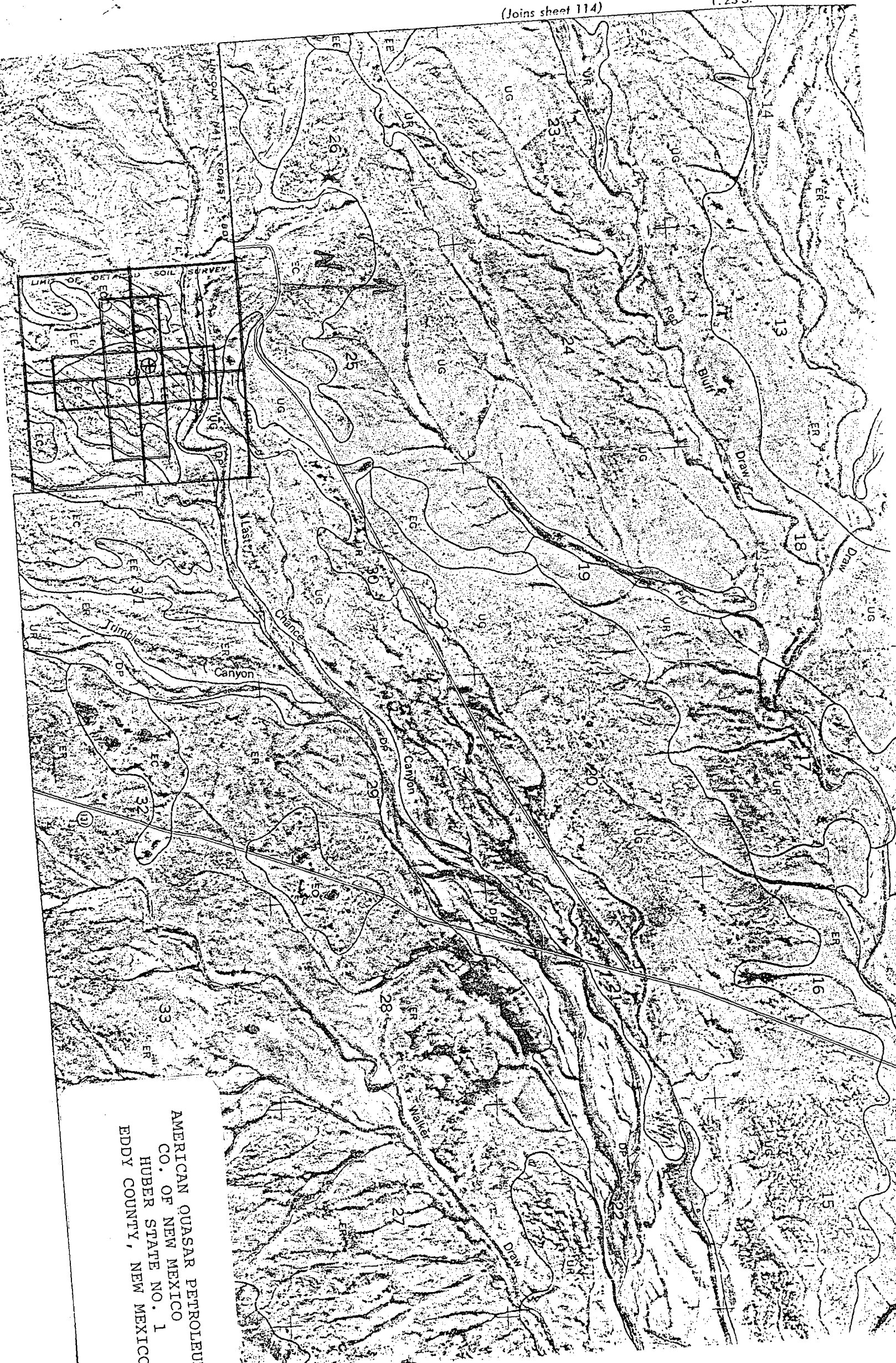
Certificate No.

**754**



0 330 660 990 1320 1650 1980 2310 2640 2000 1600 1200 800 400 0

<div>El Paso Natural Gas 8-1-74 0554467</div> <div>33</div> <div>Texas O&amp;G, et al 1-1-78 7118</div> <div>U.S.</div> <div>J.M. Huber Corp. 3-1-81 L-5235 State 750</div>	<div>34</div> <div>U.S.</div> <div>J.M. Huber Corp. 3-1-81 L-5235 State 750</div>	<div>35</div> <div>U.S.</div> <div>Midwest 1-1-79 8420</div> <div>Midwest 6-16-74 K-4172 519</div>	<div>36</div> <div>U.S.</div> <div>Franklin, Aston E, Fair 5-1-79 9393</div> <div>Hanogan Pet. Huapachco Unit 10-10-80 D/H-8-65</div>	<div>31</div> <div>U.S.</div> <div>F.M. Flanagan 4-1-76 10559107</div> <div>Mohamud H.B.P. 8-10-81</div>	<div>32</div> <div>U.S.</div> <div>R.H. Hannifan 2-17-80 L-4223 202</div> <div>J.J. Grynberg 4-1-82 L-616 381</div> <div>R.H. Hannifan 2-17-80 L-4223 202</div> <div>J.J. Grynberg 4-1-82 L-616 381</div>
<div>(J.M. Huber Corp.) 5-1-79 9392</div> <div>4</div> <div>Brainard Corp. Fed.</div>	<div>3</div> <div>U.S.</div> <div>Texas O&amp;G 12-1-78 8241</div> <div>J.M. Huber Corp. 2-1-77 14891 KGS 1525</div>	<div>2</div> <div>U.S.</div> <div>J.M. Huber Corp. 5-1-81 L-5450 1250</div> <div>J.B.E.A.S. Patterson</div>	<div>1</div> <div>U.S.</div> <div>Franklin, Aston E, Fair 5-1-79 9393</div> <div>Hanogan Pet. Huapachco Unit 10-10-80 D/H-8-65</div>	<div>6</div> <div>U.S.</div> <div>Virginia Rutter 8-1-79 9977</div>	<div>5</div> <div>U.S.</div> <div>El Paso Nat 3-1-77 1524</div> <div>J.B.E.A.S. Patterson (S)</div>
<div>J.M. Huber Corp. 5-1-79 8392</div> <div>9</div> <div>J.M. Huber Corp. 2-1-77 14895 KGS 3023</div> <div>J.M. Huber Corp. 2-1-77 14894 KGS 1717</div>	<div>10</div> <div>U.S.</div> <div>J.M. Huber Corp. 2-1-77 14891 KGS 1525</div> <div>(Humble) Huapachco Morrow Disc</div>	<div>11</div> <div>U.S.</div> <div>Texas O&amp;G 12-1-78 8241</div> <div>Franklin, Aston E, Fair 5-1-79 9393</div>	<div>12</div> <div>U.S.</div> <div>Franklin, Aston E, Fair 5-1-79 9393</div> <div>HNG 11-1-81 L-6422 750</div>	<div>7</div> <div>U.S.</div> <div>David Fasken 8-1-79 326</div> <div>J.B.E.A.S. Patterson</div>	<div>8</div> <div>U.S.</div> <div>David Fasken 8-1-79 326</div> <div>J.B.E.A.S. Patterson (S)</div>
<div>J.M. Huber Corp. 7-1-81 L-6170 State</div> <div>16</div> <div>J.M. Huber Corp. 6-1-81 L-6291 892</div>	<div>15</div> <div>U.S.</div> <div>J.M. Huber 12-1-78 11554</div> <div>J.B.E.A.S. Patterson</div>	<div>14</div> <div>U.S.</div> <div>Beard Oil 12-1-78 8241</div> <div>J.B.E.A.S. Patterson</div>	<div>13</div> <div>U.S.</div> <div>Franklin, Aston E, Fair 5-1-79 9393</div> <div>HNG 11-1-81 L-6747 223</div> <div>Huber Corp. 8-1-79 9392</div>	<div>18</div> <div>U.S.</div> <div>David Fasken 11-1-77 9597</div> <div>CMH, Inc. 12-1-81 14462</div>	<div>17</div> <div>U.S.</div> <div>David Fasken 11-1-77 9597</div> <div>J.B.E.A.S. Patterson</div>
<div>C.E. Strange 11-1-83 19412</div> <div>21</div> <div>J.M. Huber 6-1-79 8657</div> <div>Inexco 11-1-80 17152</div>	<div>22</div> <div>U.S.</div> <div>J.M. Huber 12-1-78 11554</div> <div>J.M. Huber 6-1-79 11555</div>	<div>23</div> <div>U.S.</div> <div>Beard Oil 12-1-78 8241</div> <div>J.B.E.A.S. Patterson</div> <div>Humble Huapachco Unit 10-10-80 D/H-8-65</div> <div>J.M. Huber 12-1-78 11554</div>	<div>24</div> <div>U.S.</div> <div>Franklin, Aston E, Fair 5-1-79 9393</div> <div>Huber Corp. 8-1-79 9392</div> <div>Beard Oil 12-1-78 8241</div> <div>J.B.E.A.S. Patterson</div>	<div>19</div> <div>U.S.</div> <div>David Fasken 11-1-77 9597</div> <div>CMH, Inc. 11-1-80 12548</div>	<div>20</div> <div>U.S.</div> <div>David Fasken 11-1-77 9597</div> <div>J.B.E.A.S. Patterson</div>
<div>Inexco 11-1-80 12309</div> <div>28</div> <div>J.M. Huber 6-1-79 11555</div> <div>J.M. Huber 12-1-78 11554</div>	<div>27</div> <div>U.S.</div> <div>J.M. Huber 6-1-79 11555</div> <div>J.B.E.A.S. Patterson</div>	<div>26</div> <div>U.S.</div> <div>Beard Oil 12-1-78 8241</div> <div>J.B.E.A.S. Patterson</div> <div>Sanford Storman 8-1-79 9191</div>	<div>25</div> <div>U.S.</div> <div>Franklin, Aston E, Fair 5-1-79 9393</div> <div>Beard Oil 12-1-78 8241</div> <div>J.B.E.A.S. Patterson</div>	<div>30</div> <div>U.S.</div> <div>David Fasken 8-1-79 9597</div> <div>El Paso Nat 8-1-79 9394</div>	<div>29</div> <div>U.S.</div> <div>David Fasken 8-1-79 9597</div> <div>J.B.E.A.S. Patterson</div>
<div>Union 11-1-71 0150421</div> <div>33</div> <div>Inexco 10-1-79 9902</div> <div>Inexco 8-1-79 9393</div>	<div>34</div> <div>U.S.</div> <div>J.M. Huber 6-1-79 11555</div> <div>Inexco 8-1-79 9191</div>	<div>35</div> <div>U.S.</div> <div>Sanford Storman 8-1-79 9191</div> <div>J.M. Huber 6-1-79 11555</div>	<div>36</div> <div>U.S.</div> <div>J.M. Huber Corp. 10-1-80 L-6556 4E</div>	<div>31</div> <div>U.S.</div> <div>El Paso Nat 8-1-79 9394</div> <div>Inexco 10-1-79 9902</div>	<div>30</div> <div>U.S.</div> <div>David Fasken 8-1-79 9597</div> <div>J.B.E.A.S. Patterson</div>
<div>Inexco 8-1-79 9393</div> <div>33</div> <div>Inexco 8-1-79 9393</div>	<div>34</div> <div>U.S.</div> <div>J.M. Huber 6-1-79 11555</div> <div>Inexco 8-1-79 9191</div>	<div>35</div> <div>U.S.</div> <div>Sanford Storman 8-1-79 9191</div> <div>J.M. Huber 6-1-79 11555</div>	<div>36</div> <div>U.S.</div> <div>J.M. Huber Corp. 10-1-80 L-6556 4E</div>	<div>31</div> <div>U.S.</div> <div>El Paso Nat 8-1-79 9394</div> <div>Inexco 10-1-79 9902</div>	<div>30</div> <div>U.S.</div> <div>David Fasken 8-1-79 9597</div> <div>J.B.E.A.S. Patterson</div>
<div>Inexco 8-1-79 9393</div> <div>33</div> <div>Inexco 8-1-79 9393</div>	<div>34</div> <div>U.S.</div> <div>J.M. Huber 6-1-79 11555</div> <div>Inexco 8-1-79 9191</div>	<div>35</div> <div>U.S.</div> <div>Sanford Storman 8-1-79 9191</div> <div>J.M. Huber 6-1-79 11555</div>	<div>36</div> <div>U.S.</div> <div>J.M. Huber Corp. 10-1-80 L-6556 4E</div>	<div>31</div> <div>U.S.</div> <div>El Paso Nat 8-1-79 9394</div> <div>Inexco 10-1-79 9902</div>	<div>30</div> <div>U.S.</div> <div>David Fasken 8-1-79 9597</div> <div>J.B.E.A.S. Patterson</div>
<div>Inexco 8-1-79 9393</div> <div>33</div> <div>Inexco 8-1-79 9393</div>	<div>34</div> <div>U.S.</div> <div>J.M. Huber 6-1-79 11555</div> <div>Inexco 8-1-79 9191</div>	<div>35</div> <div>U.S.</div> <div>Sanford Storman 8-1-79 9191</div> <div>J.M. Huber 6-1-79 11555</div>	<div>36</div> <div>U.S.</div> <div>J.M. Huber Corp. 10-1-80 L-6556 4E</div>	<div>31</div> <div>U.S.</div> <div>El Paso Nat 8-1-79 9394</div> <div>Inexco 10-1-79 9902</div>	<div>30</div> <div>U.S.</div> <div>David Fasken 8-1-79 9597</div> <div>J.B.E.A.S. Patterson</div>
<div>Inexco 8-1-79 9393</div> <div>33</div> <div>Inexco 8-1-79 9393</div>	<div>34</div> <div>U.S.</div> <div>J.M. Huber 6-1-79 11555</div> <div>Inexco 8-1-79 9191</div>	<div>35</div> <div>U.S.</div> <div>Sanford Storman 8-1-79 9191</div> <div>J.M. Huber 6-1-79 11555</div>	<div>36</div> <div>U.S.</div> <div>J.M. Huber Corp. 10-1-80 L-6556 4E</div>	<div>31</div> <div>U.S.</div> <div>El Paso Nat 8-1-79 9394</div> <div>Inexco 10-1-79 9902</div>	<div>30</div> <div>U.S.</div> <div>David Fasken 8-1-79 9597</div> <div>J.B.E.A.S. Patterson</div>
<div>Inexco 8-1-79 9393</div> <div>33</div> <div>Inexco 8-1-79 9393</div>	<div>34</div> <div>U.S.</div> <div>J.M. Huber 6-1-79 11555</div> <div>Inexco 8-1-79 9191</div>	<div>35</div> <div>U.S.</div> <div>Sanford Storman 8-1-79 9191</div> <div>J.M. Huber 6-1-79 11555</div>	<div>36</div> <div>U.S.</div> <div>J.M. Huber Corp. 10-1-80 L-6556 4E</div>	<div>31</div> <div>U.S.</div> <div>El Paso Nat 8-1-79 9394</div> <div>Inexco 10-1-79 9902</div>	<div>30</div> <div>U.S.</div> <div>David Fasken 8-1-79 9597</div> <div>J.B.E.A.S. Patterson</div>
<div>Inexco 8-1-79 9393</div> <div>33</div> <div>Inexco 8-1-79 9393</div>	<div>34</div> <div>U.S.</div> <div>J.M. Huber 6-1-79 11555</div> <div>Inexco 8-1-79 9191</div>	<div>35</div> <div>U.S.</div> <div>Sanford Storman 8-1-79 9191</div> <div>J.M. Huber 6-1-79 11555</div>	<div>36</div> <div>U.S.</div> <div>J.M. Huber Corp. 10-1-80 L-6556 4E</div>	<div>31</div> <div>U.S.</div> <div>El Paso Nat 8-1-79 9394</div> <div>Inexco 10-1-79 9902</div>	<div>30</div> <div>U.S.</div> <div>David Fasken 8-1-79 9597</div> <div>J.B.E.A.S. Patterson</div>
<div>Inexco 8-1-79 9393</div> <div>33</div> <div>Inexco 8-1-79 9393</div>	<div>34</div> <div>U.S.</div> <div>J.M. Huber 6-1-79 11555</div> <div>Inexco 8-1-79 9191</div>	<div>35</div> <div>U.S.</div> <div>Sanford Storman 8-1-79 9191</div> <div>J.M. Huber 6-1-79 11555</div>	<div>36</div> <div>U.S.</div> <div>J.M. Huber Corp. 10-1-80 L-6556 4E</div>	<div>31</div> <div>U.S.</div> <div>El Paso Nat 8-1-79 9394</div> <div>Inexco 10-1-79 9902</div>	<div>30</div> <div>U.S.</div> <div>David Fasken 8-1-79 9597</div> <div>J.B.E.A.S. Patterson</div>
<div>Inexco 8-1-79 9393</div> <div>33</div> <div>Inexco 8-1-79 9393</div>	<div>34</div> <div>U.S.</div> <div>J.M. Huber 6-1-79 11555</div> <div>Inexco 8-1-79 9191</div>	<div>35</div> <div>U.S.</div> <div>Sanford Storman 8-1-79 9191</div> <div>J.M. Huber 6-1-79 11555</div>	<div>36</div> <div>U.S.</div> <div>J.M. Huber Corp. 10-1-80 L-6556 4E</div>	<div>31</div> <div>U.S.</div> <div>El Paso Nat 8-1-79 9394</div> <div>Inexco 10-1-79 9902</div>	<div>30</div> <div>U.S.</div> <div>David Fasken 8-1-79 9597</div> <div>J.B.E.A.S. Patterson</div>
<div>Inexco 8-1-79 9393</div> <div>33</div> <div>Inexco 8-1-79 9393</div>	<div>34</div> <div>U.S.</div> <div>J.M. Huber 6-1-79 11555</div> <div>Inexco 8-1-79 9191</div>	<div>35</div> <div>U.S.</div> <div>Sanford Storman 8-1-79 9191</div> <div>J.M. Huber 6-1-79 11555</div>	<div>36</div> <div>U.S.</div> <div>J.M. Huber Corp. 10-1-80 L-6556 4E</div>	<div>31</div> <div>U.S.</div> <div>El Paso Nat 8-1-79 9394</div> <div>Inexco 10-1-79 9902</div>	<div>30</div> <div>U.S.</div> <div>David Fasken 8-1-79 9597</div> <div>J.B.E.A.S. Patterson</div>
<div>Inexco 8-1-79 9393</div> <div>33</div> <div>Inexco 8-1-79 9393</div>	<div>34</div> <div>U.S.</div> <div>J.M. Huber 6-1-79 11555</div> <div>Inexco 8-1-79 9191</div>	<div>35</div> <div>U.S.</div> <div>Sanford Storman 8-1-79 9191</div> <div>J.M. Huber 6-1-79 11555</div>	<div>36</div> <div>U.S.</div> <div>J.M. Huber Corp. 10-1-80 L-6556 4E</div>	<div>31</div> <div>U.S.</div> <div>El Paso Nat 8-1-79 9394</div> <div>Inexco 10-1-79 9902</div>	<div>30</div> <div>U.S.</div> <div>David Fasken 8-1-79 9597</div> <div>J.B.E.A.S. Patterson</div>
<div>Inexco 8-1-79 9393</div> <div>33</div> <div>Inexco 8-1-79 9393</div>	<div>34</div> <div>U.S.</div> <div>J.M. Huber 6-1-79 11555</div> <div>Inexco 8-1-79 9191</div>	<div>35</div> <div>U.S.</div> <div>Sanford Storman 8-1-79 9191</div> <div>J.M. Huber 6-1-79 11555</div>	<div>36</div> <div>U.S.</div> <div>J.M. Huber Corp. 10-1-80 L-6556 4E</div>	<div>31</div> <div>U.S.</div> <div>El Paso Nat 8-1-79 9394</div> <div>Inexco 10-1-79 9902</div>	<div>30</div> <div>U.S.</div> <div>David Fasken 8-1-79 9597</div> <div>J.B.E.A.S. Patterson</div>
<div>Inexco 8-1-79 9393</div> <div>33</div> <div>Inexco 8-1-79 9393</div>	<div>34</div> <div>U.S.</div> <div>J.M. Huber 6-1-79 11555</div> <div>Inexco 8-1-79 9191</div>	<div>35</div> <div>U.S.</div> <div>Sanford Storman 8-1-79 9191</div> <div>J.M. Huber 6-1-79 11555</div>	<div>36</div> <div>U.S.</div> <div>J.M. Huber Corp. 10-1-80 L-6556 4E</div>	<div>31</div> <div>U.S.</div> <div>El Paso Nat 8-1-79 9394</div> <div>Inexco 10-1-79 9902</div>	<div>30</div> <div>U.S.</div> <div>David Fasken 8-1-79 9597</div> <div>J.B.E.A.S. Patterson</div>
<div>Inexco 8-1-79 9393</div> <div>33</div> <div>Inexco 8-1-79 9393</div>	<div>34</div> <div>U.S.</div> <div>J.M. Huber 6-1-79 11555</div> <div>Inexco 8-1-79 9191</div>	<div>35</div> <div>U.S.</div> <div>Sanford Storman 8-1-79 9191</div> <div>J.M. Huber 6-1-79 11555</div>	<div>36</div> <div>U.S.</div> <div>J.M. Huber Corp. 10-1-80 L-6556 4E</div>	<div>31</div> <div>U.S.</div> <div>El Paso Nat 8-1-79 9394</div> <div>Inexco 10-1-79 9902</div>	<div>30</div> <div>U.S.</div> <div>David Fasken 8-1-79 9597</div> <div>J.B.E.A.S. Patterson</div>
<div>Inexco 8-1-79 9393</div> <div>33</div> <div>Inexco 8-1-79 9393</div>	<div>34</div> <div>U.S.</div> <div>J.M. Huber 6-1-79 11555</div> <div>Inexco 8-1-79 9191</div>	<div>35</div> <div>U.S.</div> <div>Sanford Storman 8-1-79 9191</div> <div>J.M. Huber 6-1-79 11555</div>	<div>36</div> <div>U.S.</div> <div>J.M. Huber Corp. 10-1-80 L-6556 4E</div>	<div>31</div> <div>U.S.</div> <div>El Paso Nat 8-1-79 9394</div> <div>Inexco 10-1-79 9902</div>	<div>30</div> <div>U.S.</div> <div>David Fasken 8-1-79 9597</div> <div>J.B.E.A.S. Patterson</div>
<div>Inexco 8-1-79 9393</div> <div>33</div> <div>Inexco 8-1-79 9393</div>	<div>34</div> <div>U.S.</div> <div>J.M. Huber 6-1-79 11555</div> <div>Inexco 8-1-79 9191</div>	<div>35</div> <div>U.S.</div> <div>Sanford Storman 8-1-79 9191</div> <div>J.M. Huber 6-1-79 11555</div>	<div>36</div> <div>U.S.</div> <div>J.M. Huber Corp. 10-1-80 L-6556 4E</div>	<div>31</div> <div>U.S.</div> <div>El Paso Nat 8-1-79 9394</div> <div>Inexco 10-1-79 9902</div>	<div>30</div> <div>U.S.</div> <div>David Fasken 8-1-79 9597</div> <div>J.B.E.A.S. Patterson</div>
<div>Inexco 8-1-79 9393</div> <div>33</div> <div>Inexco 8-1-79 9393</div>	<div>34</div> <div>U.S.</div> <div>J.M. Huber 6-1-79 11555</div> <div>Inexco 8-1-79 9191</div>	<div>35</div> <div>U.S.</div> <div>Sanford Storman 8-1-79 9191</div> <div>J.M. Huber 6-1-79 11555</div>	<div>36</div> <div>U.S.</div> <div>J.M. Huber Corp. 10-1-80 L-6556 4E</div>	<div>31</div> <div>U.S.</div> <div>El Paso Nat 8-1-79 9394</div> <div>Inexco 10-1-79 9902</div>	<div>30</div> <div>U.S.</div> <div>David Fasken 8-1-79 9597</div> <div>J.B.E.A.S. Patterson</div>
<div>Inexco 8-1-79 9393</div> <div>33</div> <div>Inexco 8-1-79 9393</div>	<div>34</div> <div>U.S.</div> <div>J.M. Huber 6-1-79 11555</div> <div>Inexco 8-1-79 9191</div>	<div>35</div> <div>U.S.</div> <div>Sanford Storman 8-1-79 9191</div> <div>J.M. Huber 6-1-79 11555</div>	<div>36</div> <div>U.S.</div> <div>J.M. Huber Corp. 10-1-80 L-6556 4E</div>	<div>31</div> <div>U.S.</div> <div>El Paso Nat 8-1-79 9394</div> <div>Inexco 10-1-79 9902</div>	<div>30</div> <div>U.S.</div> <div>David Fasken 8-1-79 9597</div> <div>J.B.E.A.S. Patterson</div>
<div>Inexco 8-1-79 9393</div> <div>33</div> <div>Inexco 8-1-79 9393</div>	<div>34</div> <div>U.S.</div> <div>J.M. Huber 6-1-79 11555</div> <div>Inexco 8-1-79 9191</div>	<div>35</div> <div>U.S.</div> <div>Sanford Storman 8-1-79 9191</div> <div>J.M. Huber 6-1-79 11555</div>	<div>36</div> <div>U.S.</div> <div>J.M. Huber Corp. 10-1-80 L-6556 4E</div>	<div>31</div> <div>U.S.</div> <div>El Paso Nat 8-1-79 9394</div> <div>Inexco 10-1-79 9902</div>	<div>30</div> <div>U.S.</div> <div>David Fasken 8-1-79 9597</div> <div>J.B.E.A.S. Patterson</div>
<div>Inexco 8-1-79 9393</div> <div>33</div> <div>Inexco 8-1-79 9393</div>	<div>34</div> <div>U.S.</div> <div>J.M. Huber 6-1-79 11555</div> <div>Inexco 8-1-79 9191</div>	<div>35</div> <div>U.S.</div> <div>Sanford Storman 8-1-79 9191</div> <div>J.M. Huber 6-1-79 11555</div>	<div>36</div> <div>U.S.</div> <div>J.M. Huber Corp. 10-1-80 L-6556 4E</div>	<div>31</div> <div>U.S.</div> <div>El Paso Nat 8-1-79 9394</div> <div>Inexco 10-1-79 9902</div>	<div>30</div> <div>U.S.</div> <div>David Fasken 8-1-79 9597</div> <div>J.B.E.A.S. Patterson</div>
<div>Inexco 8-1-79 9393</div> <div>33</div> <div>Inexco 8-1-79 9393</div>	<div>34</div> <div>U.S.</div> <div>J.M. Huber 6-1-79 11555</div> <div>Inexco 8-1-79 9191</div>	<div>35</div> <div>U.S.</div> <div>Sanford Storman 8-1-79 9191</div> <div>J.M. Huber 6-1-79 11555</div>	<div>36</div> <div>U.S.</div> <div>J.M. Huber Corp. 10-1-80 L-6556 4E</div>	<div>31</div> <div>U.S.</div> <div>El Paso Nat 8-1-79 9394</div> <div>Inexco 10-1-79 9902</div>	<div>30</div> <div>U.S.</div> <div>David Fasken 8-1-79 9597</div> <div>J.B.E.A.S. Patterson</div>
<div>Inexco 8-1-79 9393</div> <div>33</div> <div>Inexco 8-1-79 9393</div>	<div>34</div> <div>U.S.</div> <div>J.M. Huber 6-1-79 11555</div> <div>Inexco 8-1-79 9191</div>	<div>35</div> <div>U.S.</div> <div>Sanford Storman 8-1-79 9191</div> <div>J.M. Huber 6-1-79 11555</div>	<div>36</div> <div>U.S.</div> <div>J.M. Huber Corp. 10-1-80 L-6556 4E</div>	<div>31</div> <div>U.S.</div> <div>El Paso Nat 8-1-79 9394</div> <div>Inexco 10-1-79 9902</div>	<div>30</div> <div>U.S.</div> <div>David Fasken 8-1-79 9597</div> <div>J.B.E.A.S. Patterson</div>
<div>Inexco 8-1-79 9393</div> <div>33</div> <div>Inexco 8-1-79 9393</div>	<div>34</div> <div>U.S.</div> <div>J.M. Huber 6-1-79 11555</div> <div>Inexco 8-1-79 9191</div>	<div>35</div> <div>U.S.</div> <div>Sanford Storman 8-1-79 9191</div> <div>J.M. Huber 6-1-79 11555</div>	<div>36</div> <div>U.S.</div> <div>J.M. Huber Corp. 10-1-80 L-6556 4E</div>	<div>31</div> <div>U.S.</div> <div>El Paso Nat 8-1-79 9394</div> <div>Inexco 10-1-79 9902</div>	<div>30</div> <div>U.S.</div> <div>David Fasken 8-1-79 9597</div> <div>J.B.E.A.S. Patterson</div>
<div>Inexco 8-1-79 9393</div> <div>33</div> <div>Inexco 8-1-79 9393</div>	<div>34</div> <div>U.S.</div> <div>J.M. Huber 6-1-79 11555</div> <div>Inexco 8-1-79 9191</div>	<div>35</div> <div>U.S.</div> <div>Sanford Storman 8-1-79 9191</div> <div>J.M. Huber 6-1-79 11555</div>	<div>36</div> <div>U.S.</div> <div>J.M. Huber Corp. 10-1-80 L-6556 4E</div>	<div>31</div> <div>U.S.</div> <div>El Paso Nat 8-1-79 9394</div> <div>Inexco 10-1-79 9902</div>	<div>30</div> <div>U.S.</div> <div>David Fasken 8-1-79 9597</div> <div>J.B.E.A.S. Patterson</div>
<div>Inexco 8-1-79 9393</div> <div>33</div> <div>Inexco 8-1-79 9393</div>	<div>34</div> <div>U.S.</div> <div>J.M. Huber 6-1-79 11555</div> <div>Inexco 8-1-79 9191</div>	<div>35</div> <div>U.S.</div> <div>Sanford Storman 8-1-79 9191</div> <div>J.M. Huber 6-1-79 11555</div>	<div>36</div> <div>U.S.</div> <div>J.M. Huber Corp. 10-1-80 L-6556 4E</div>	<div>31</div> <div>U.S.</div> <div>El Paso Nat 8-1-79 9394</div> <div>Inexco 10-1-79 9902</div>	<div>30</div> <div>U.S.</div> <div>David Fasken 8-1-79 9597</div> <div>J.B.E.A.S. Patterson</div>
<div>Inexco 8-1-79 9393</div> <div>33</div> <div>Inexco 8-1-79 9393</div>	<div>34</div> <div>U.S.</div> <div>J.M. Huber 6-1-79 11555</div> <div>Inexco 8-1-79 9191</div>	<div>35</div> <div>U.S.</div> <div>Sanford Storman 8-1-79 9191</div> <div>J.M. Huber 6-1-79 11555</div>	<div>36</div> <div>U.S.</div> <div>J.M. Huber Corp. 10-1-80 L-6556 4E</div>	<div>31</div> <div>U.S.</div> <div>El Paso Nat 8-1-79 9394</div> <div>Inexco 10-1-79 9902</div>	<div>30</div> <div>U.S.</div> <div>David Fasken 8-1-79 9597</div> <div>J.B.E.A.S. Patterson</div>
<div>Inexco 8-1-79 9393</div> <div>33</div> <div>Inexco 8-1-79 9393</div>	<div>34</div> <div>U.S.</div> <div>J.M. Huber 6-1-79 11555</div> <div>Inexco 8-1-79 9191</div>	<div>35</div> <div>U.S.</div> <div>Sanford Storman 8-1-79 9191</div> <div>J.M. Huber 6-1-79 11555</div>	<div>36</div> <div>U.S.</div> <div>J.M. Huber Corp. 10-1-80 L-6556 4E</div>	<div>31</div> <div>U.S.</div> <div>El Paso Nat 8-1-79 9394</div> <div>Inexco 10-1-79 9902</div>	<div>30</div> <div>U.S.</div> <div>David Fasken 8-1-79 9597</div> <div>J.B.E.A.S. Patterson</div>
<div>Inexco 8-1-79 9393</div> <div>33</div> <div>Inexco 8-1-79 9393</div>	<div>34</div> <div>U.S.</div> <div>J.M. Huber 6-1-79 11555</div> <div>Inexco 8-1-79 9191</div>	<div>35</div> <div>U.S.</div> <div>Sanford Storman 8-1-79 9191</div> <div>J.M. Huber 6-1-79 11555</div>	<div>36</div> <div>U.S.</div> <div>J.M. Huber Corp. 10-1-80 L-6556 4E</div>	<div>31</div> <div>U.S.</div> <div>El Paso Nat 8-1-79 9394</div> <div>Inexco 10-1-79 9902</div>	<div>30</div> <div>U.S.</div> <div>David Fasken 8-1-79 9597</div> <div>J.B.E.A.S. Patterson</div>
<div>Inexco</div>					

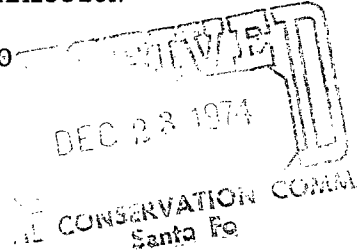


AMERICAN QUASAR PETROLEUM  
CO. OF NEW MEXICO  
HUBER STATE NO. 1  
EDDY COUNTY, NEW MEXICO

OIL CONSERVATION COMMISSION  
Arturo DISTRICT

hsl - 695

OIL CONSERVATION COMMISSION  
BOX 2088  
SANTA FE, NEW MEXICO



DATE 12-20-74

RE: Proposed MC \_\_\_\_\_  
Proposed DHC \_\_\_\_\_  
Proposed NSL X \_\_\_\_\_  
Proposed SWD \_\_\_\_\_  
Proposed WFX \_\_\_\_\_  
Proposed PMX \_\_\_\_\_

Gentlemen:

I have examined the application dated 12-17-74  
for the American Russian Int. Co. Haber Stak #1- F 36-23-22  
Operator Lease and Well No. Unit, S-T-R

and my recommendations are as follows:

Approval  
\_\_\_\_\_  
\_\_\_\_\_  
\_\_\_\_\_  
\_\_\_\_\_  
\_\_\_\_\_

Yours very truly,

W. A. Gressett