

**SABINE PRODUCTION COMPANY**

SUITE 200 / 619 WEST TEXAS STREET  
MIDLAND, TEXAS 79701  
PHONE (915) 683-5607

February 25, 1977

FEB 23 1977

OIL CONSERVATION COMM.  
Santa Fe

OK for immediate approval  
NSL-827

Mr. Daniel Nutter  
Oil Conservation Commission  
P. O. Box 2088  
Santa Fe, New Mexico 87501

104 F I  
104 F  
added to another horizon

Re: Request for Administrative Approval  
Non-Standard Gas Well Location  
Sabine Production Company  
#1 No. Eidson Fee located  
660' from S&W Lines of Sec. 34,  
T-15-S, R-34-E  
Lea County, New Mexico

Dear Mr. Nutter:

The subject well was originally staked as a Pennsylvanian wild-cat anticipating an oil well and 40\* acres was dedicated to it. However, the well was completed from the Morrow formation with a CAOF of 4374 MCF of gas and with gas liquid ratio of 26.4 (gravity of gas .620, gravity of oil 57°).

We are now dedicating W/2 of Section 34 (320 acres) and respectfully request that the Commission approve this location without a hearing so that the much needed gas may be produced as soon as possible. We feel that this approval will not interfere with orderly development of the Unit with subsequent standard locations.\*

Yours very truly,

*O. M. Salman*

O. M. SALMAN  
Division Manager

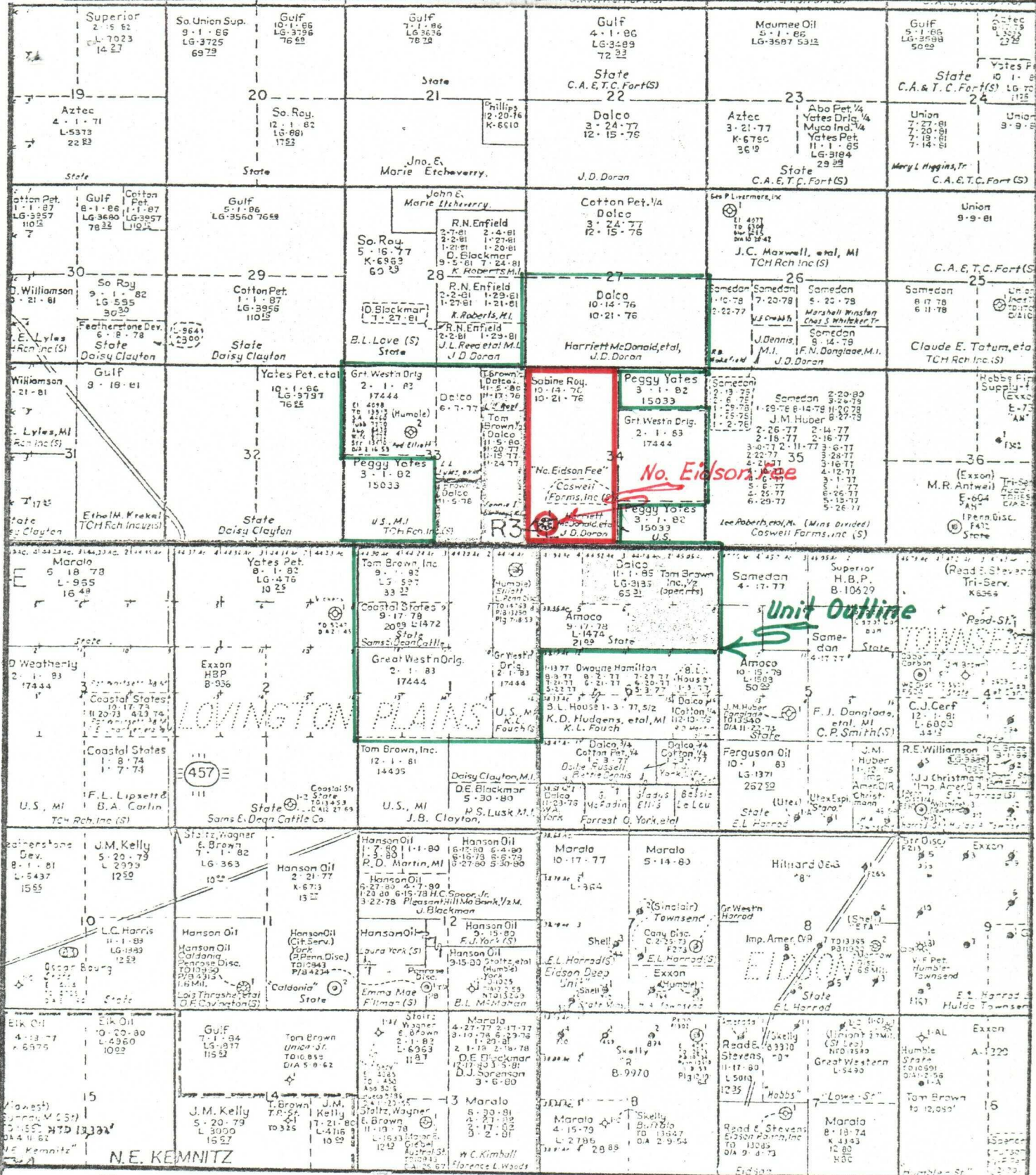
OMS:pk  
Attachments

P.S.: Three copies of following were previously sent to Hobbs:

Plat	DST's
C-105	Deviation
C-104	C-122 & 4 Point Test
C-123	

and one copy of Logs.

\*See attached plat showing subject well and outline of North Eidson Working Interest Unit.

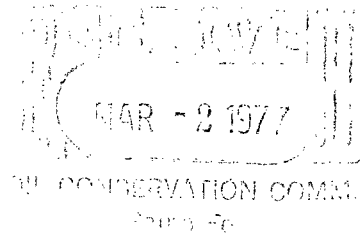




207 SOUTH FOURTH STREET  
ARTESIA, NEW MEXICO - 88210

TELEPHONE 746-3558

S. P. YATES  
PRESIDENT  
MARTIN YATES, III  
VICE PRESIDENT  
JOHN A. YATES  
VICE PRESIDENT  
B. W. HARPER  
SEC. - TREAS.



February 28, 1977

Mr. Daniel Nutter  
New Mexico Oil Conservation Commission  
Land Office Building  
Santa Fe, New Mexico 87501

NSL- 827

Re: (Dalco) Sabine Production Company  
Eidson Fee #1  
660' from the South Line and  
660' from the West Line of Section 28  
Township 15 South, Range 34 East, N.M.P.M.

Dear Sir:

Peggy A. and John A. Yates waive any objection to the captioned  
unorthodox location.

Very truly yours,

Peggy A. and John A. Yates

By: 

nf