

NSL-908

Amoco Production Company  
P. O. Drawer "A"  
Levelland, TX 79336

November 22, 1977

File: JLW-WF-1918

Re: Unorthodox Location  
South Mattix Unit No. 32  
Wildcat McKee Field  
Lea County, New Mexico

*called for  
Topo plat  
11-29-77 to Hobbs  
copy  
NSL  
Rule 104 F  
Waiver in  
no waiting*

New Mexico Oil Conservation Commission (3)  
P. O. Box 2088  
Santa Fe, New Mexico 87501

Attn: Mr. Joe D. Ramey, Secretary Director

Gentlemen:

Amoco Production Company respectfully requests administrative approval for an unorthodox location for its South Mattix Unit No. 32, located in Unit H, Section 22, T-24-S, R-37-E in Lea County, New Mexico. Approval is requested based upon topographical conditions.

The original orthodox drillsite was located 1,650' FNL and 330' FEL of the above described location. It is not possible to drill at this location due to terrain depression and closeness of the drilling operation to an existing high pressure gas pipeline. For the sake of safety and convenience, Amoco has proposed a new, unorthodox location at 1,535' FNL and 330' FEL.

Enclosed is a plat showing location of well and the offset operator. Also, enclosed is a copy of the waiver of objection by Gulf Oil Corporation, the only offset operator of the proposed location. It is respectfully requested that the Commission issue orders giving administrative approval of this unorthodox location due to topographical conditions.

Yours very truly,

*J. L. Walters RC*  
J. L. WALTERS  
Area Administrative Supervisor

RWA:jb

Attachments



**Amoco Production Company**

P.O. Drawer A  
Levelland, Texas 79336

REC - 8 1977

V. E. Staley  
Area Superintendent

December 5, 1977

File: VES-WF-2057

Re: Unorthodox Location  
South Mattix Unit No. 32  
Wildcat McKee Field  
Lea County, New Mexico

New Mexico Oil Conservation Commission  
P. O. Box 2088  
Santa Fe, NM 87501

Attention: Mr. R. L. Stamets

Gentlemen:

Enclosed are copies of the topographic map of the proposed drillsite. Also, the high pressure pipeline has been added to the topographic map per your telephone conversation with our Mr. Ray Cox. I trust these maps will help to answer your questions. Please advise if we can be of further assistance.

We respectfully request that the Commission favor us with an administrative approval of this unorthodox location.

Yours very truly,

Enclosures

RWC:jla

# Gulf Energy and Minerals Company - U.S.

SOUTHWEST DIVISION  
November 18, 1977

NOV 23 1977

J. L. Huitt  
VICE-PRESIDENT  
C. E. Fields  
COMPTROLLER  
R. E. Galvin  
GENERAL MANAGER-PRODUCTION  
J. A. Hord  
GENERAL MANAGER-EXPLORATION

## WAIVER

NOV 23 1977  
OIL CONSERVATION COMMISSION  
Santa Fe

RECEIVED	
Levelland A	
NOV 21 1977	
P. O. Drawer 1 Midland, TX 79702	
AS	
AAS	
AE	
AF-E	
AF-W	
AFNM	
DS	
SE	
AA	
File	

Mr. Joe D. Ramey  
New Mexico Oil Conservation  
Commission  
State Land Office Building  
Santa Fe, New Mexico

Gentlemen:

This is to advise that Gulf Oil Corporation has been given due notice that Amoco Production Company has made application for an unorthodox location for their South Mattix, Well No. 32, as a wildcat in Lea County, New Mexico.

We hereby waive any objection to the granting of this application for the above well which is to be located:

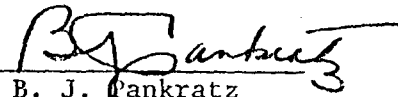
1535' FNL and 330' FEL, Section 22, T-24-S, R-37-E.

Executed this 17<sup>th</sup> day of November, 1977.

Yours very truly,

GULF OIL CORPORATION

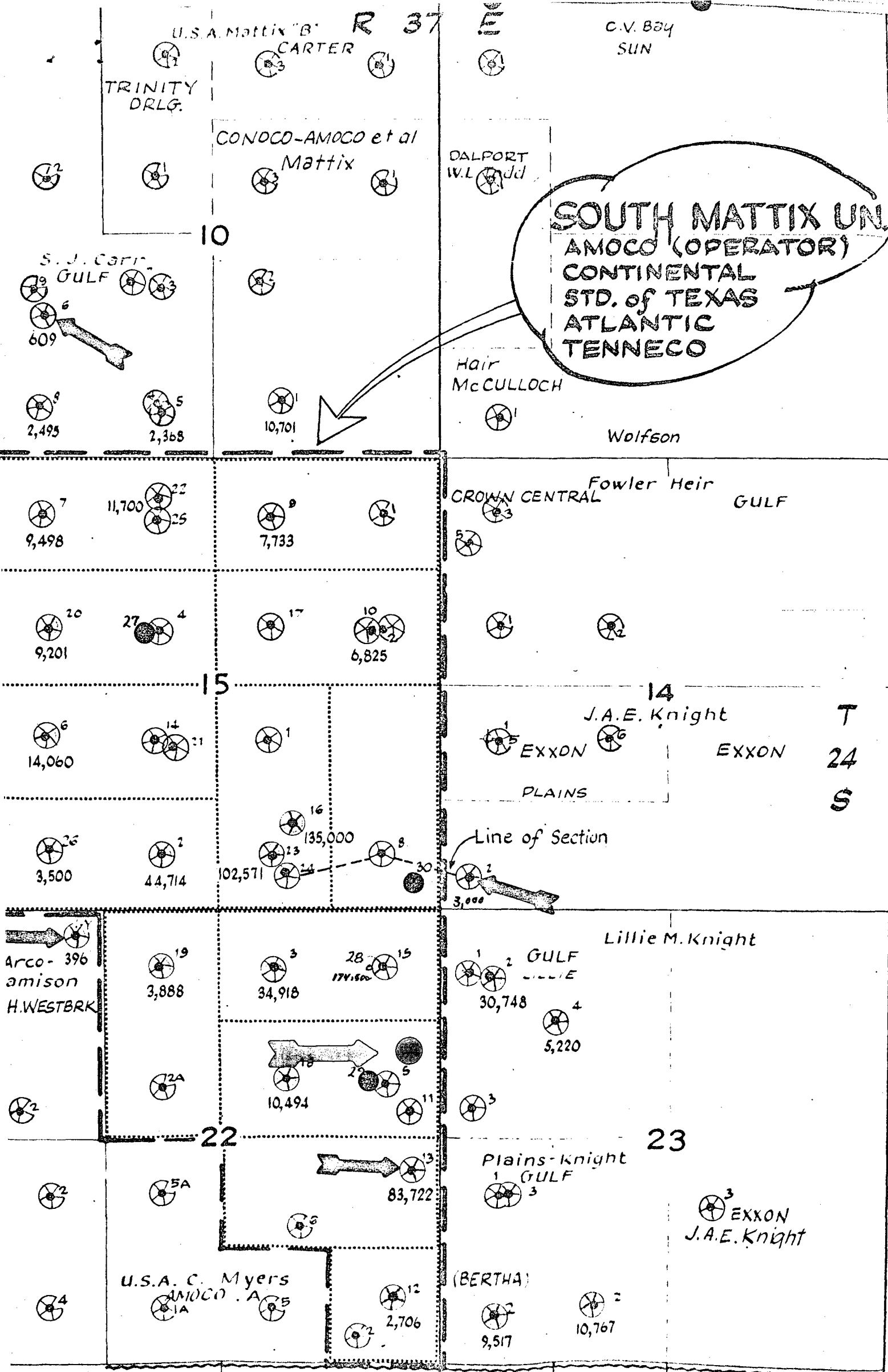
BY:

  
B. J. Pankratz  
Manager - Engineering

KPB:jhf

cc: Amoco Production Company  
Post Office Drawer A  
Levelland, Texas 79336  
Attention: Mr. V. E. Staley

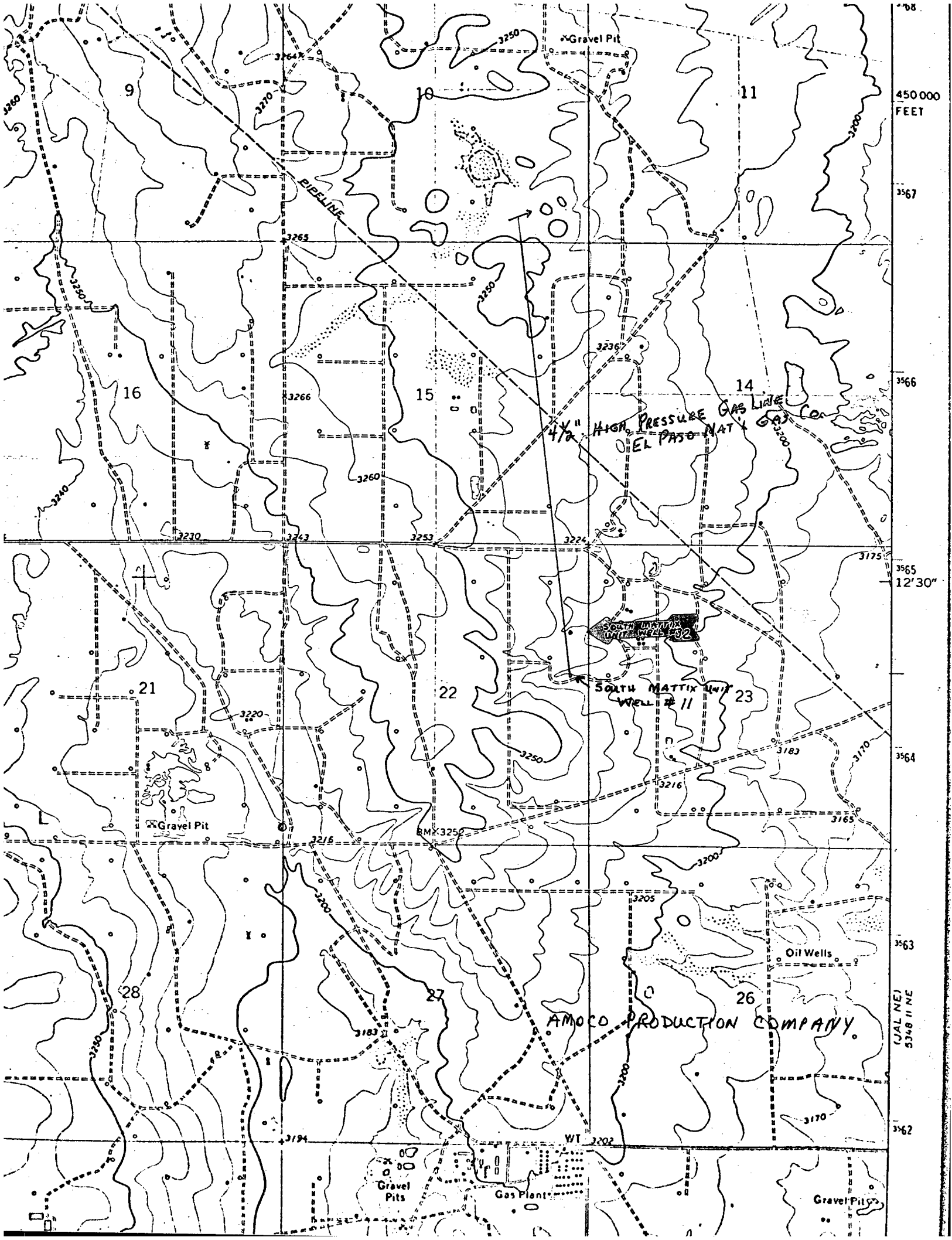




~LEGEND~

- 1) GOR
- 2) PROPOSED LOCATION
- 3) PERMITTED LOCATION

AMOCO PRODUCTION COMPANY  
**FOWLER AREA**  
 LEA COUNTY, N. MEX.



450 000  
FEET

3567

3566

3565  
12' 30"

3564

3563

3562  
3548 11 NE

3562