



STATE OF NEW MEXICO
ENERGY AND MINERALS DEPARTMENT
OIL CONSERVATION DIVISION

JERRY APODACA
GOVERNOR

NICK FRANKLIN
SECRETARY

May 22, 1978

POST OFFICE BOX 2088
STATE LAND OFFICE BUILDING
SANTA FE, NEW MEXICO 87501
(505) 827-2434

J. Gregory Merrion
Petroleum Engineer
P. O. Box 507
Farmington, New Mexico 87401

Re: Application for Non-Standard
Location Hi Roll No. 2 and 3
Section 35, T-27-N, R-13-W,
San Juan County, New Mexico

We may not process the subject application for non-standard location until the required information or plats checked below (is) (are) submitted.

- ☒ A plat must be submitted showing the ownership of the offsetting leases.
- ☒ A statement must be submitted that offset owners have been notified of the application by certified mail.
- ☒ A plat must be submitted fully identifying the topography necessitating the non-standard location.
- ☐ The application must be signed.

Very truly yours,

R. L. STAMETS
Technical Support Chief

J. GREGORY MERRION
PETROLEUM ENGINEER
P. O. BOX 807
FARMINGTON, NEW MEXICO 87401

JUN 16 1978

NEW MEXICO
OIL CONSERVATION COMMISSION
Santa Fe

June 14, 1978

R. L. Stamets
New Mexico Oil Conservation Commission
P.O. Box 2088
Santa Fe, NM 87501

RE: Unorthodox locations
for Hi Roll #2 & #3
and Hill #1

Dear Sir:

Pursuant to our conversation of June 14th, enclosed are topographic
plats showing our proposed locations.

The Hi Roll #2 well was moved by the Bureau of Indian Affairs to
avoid infield conflict with their proposed irrigation system. The
Hi Roll #3 was moved entirely out of a proposed field, as our
desired location on this well was within the field boundary.

The Hill #1 Blanco Mesaverde well will be located in the NE of
Section 30, T26N, R2W, Rio Arriba at the following distances:

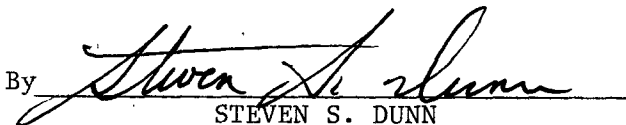
1650 ft. FNL and 750 ft. FEL

I trust this information is satisfactory.

Yours truly,

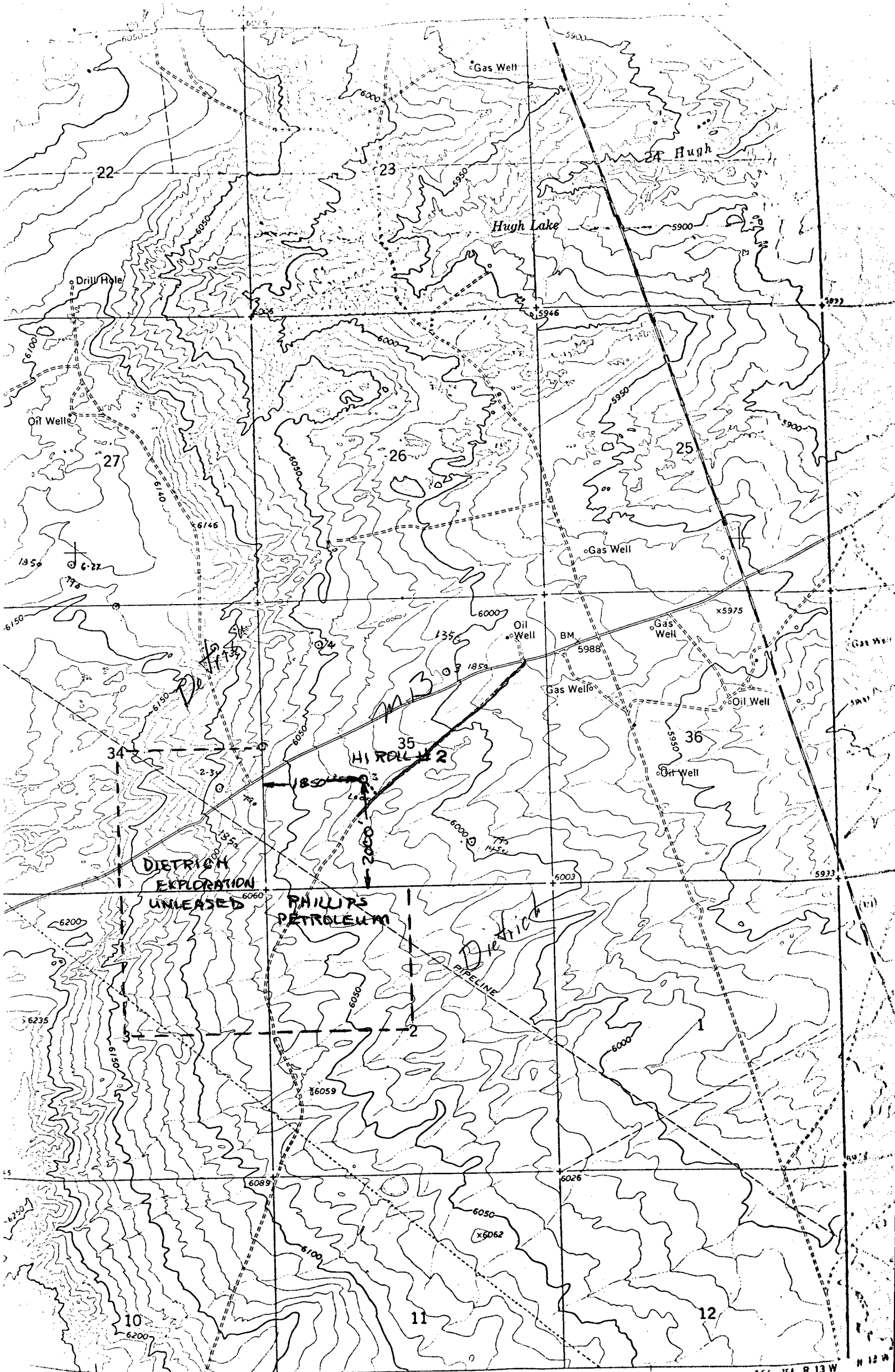
MERRION & BAYLESS

By


STEVEN S. DUNN

SSD/pb

Enclosures



Vicinity Map for
MERRION & BAYLESS #2 H1 Roll
2000' FSL 1850' FWL Sec 35-T27N-R13W
San Juan County, New Mexico