

BLACKWOOD & NICHOLS Co., LTD.

P. O. BOX 1237

DURANGO, COLORADO 81301

(303) 247-0728

February 6, 1980

*NSL - 1153
Blanco Mesaverde
Rule 104 F
2-27-80*

Mr. Joe D. Ramey, Secretary-Director
New Mexico Energy Resources Board
c/o New Mexico Oil Conservation Commission
P. O. Box 2088
Santa Fe, New Mexico 87501

Re: Application for non-standard
location, Northeast Blanco
Unit No. 34A

Dear Mr. Ramey:

As operator of the Northeast Blanco Unit, we are requesting administrative approval of a non-standard well location to be completed in the Mesaverde Formation.

We intend to drill the Northeast Blanco Unit Well No. 34A, an infill well, located 1580' F/SL - 1290' F/WL, K-18-30-7W, San Juan County, New Mexico.

Due to extreme topographical conditions and proximity to the Navajo Dam, we believe we have surveyed this well site in the most logical location.

All offset properties, are within the bounds of the Northeast Blanco Unit except Section 30, T30N, R7W, Rio Arriba County, New Mexico, which is operated by El Paso Natural Gas Company, P. O. Box 990, Farmington, New Mexico, who was notified by registered mail on February 6, 1980, of our request for administrative approval of the above non-standard well location.

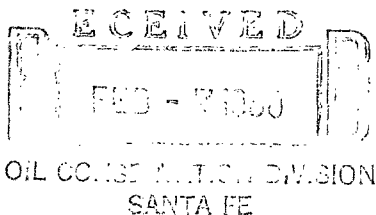
The proration unit dedicated to Well No. 34A was approved by Case No. 1009; Order No. R-753 containing 307.44 acres.

Very truly yours,

BLACKWOOD & NICHOLS CO., LTD.

De Lasso Loos

DeLasso Loos, District Manager



Attachments
DL:lr

cc: New Mexico Oil Conservation Commission
Aztec, New Mexico

United States Geological Survey
Durango, Colorado

**N MEXICO OIL CONSERVATION COMMISSION
WELL LOCATION AND ACREAGE DEDICATION PLAT**

Form C-102
Supersedes C-12B
Effective 1-1-65

All distances must be from the outer boundaries of the Section.

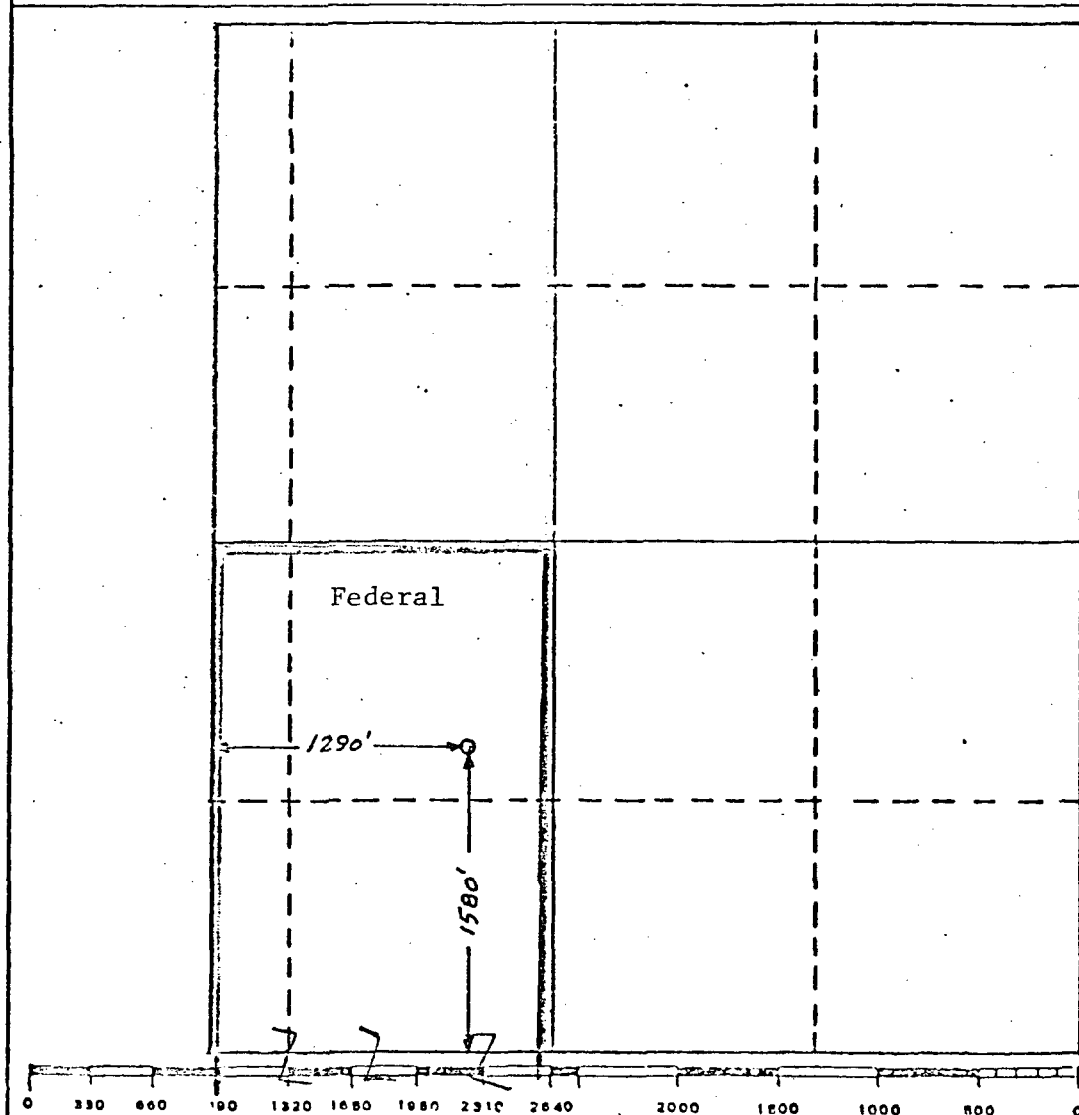
| | | | | | |
|---|---|--------------------------|---------------------------------------|---------------------------|---|
| Operator BLACKWOOD & NICHOLS | | | Lease NORTHEAST BLANCO UNIT | | Well No. 34-A |
| Unit Letter K | Section 18 | Township 30 N. | Range 7W.N.M.P.M. | County SAN JUAN | |
| Actual Footage Location of Well: <div style="display: flex; justify-content: space-between; align-items: center;"> 1580 feet from the south line and 1290 feet from the west line </div> | | | | | |
| Ground Level Elev: 6144 U.G. | Producing Formation Mesaverde | | Pool Blanco-Mesaverde | | Dedicated Acreage: 307.44 Acres |

1. Outline the acreage dedicated to the subject well by colored pencil or hachure marks on the plat below.
2. If more than one lease is dedicated to the well, outline each and identify the ownership thereof (both as to working interest and royalty).
3. If more than one lease of different ownership is dedicated to the well, have the interests of all owners been consolidated by communitization, unitization, force-pooling, etc?

☒ Yes ☐ No If answer is "yes," type of consolidation Unitization

If answer is "no," list the owners and tract descriptions which have actually been consolidated. (Use reverse side of this form if necessary.) _____

No allowable will be assigned to the well until all interests have been consolidated (by communitization, unitization, forced-pooling, or otherwise) or until a non-standard unit, eliminating such interests, has been approved by the Commission.



CERTIFICATION

I hereby certify that the information contained herein is true and complete to the best of my knowledge and belief.

DeLasso Loos

Name DeLasso Loos

Position
District Manager

Company
Blackwood & Nichols Co., Ltd

Date
January 21, 1980

I hereby certify that the well location shown on this plat was plotted from field notes of actual surveys made by me or under my supervision, and that the same is true and correct to the best of my knowledge and belief.

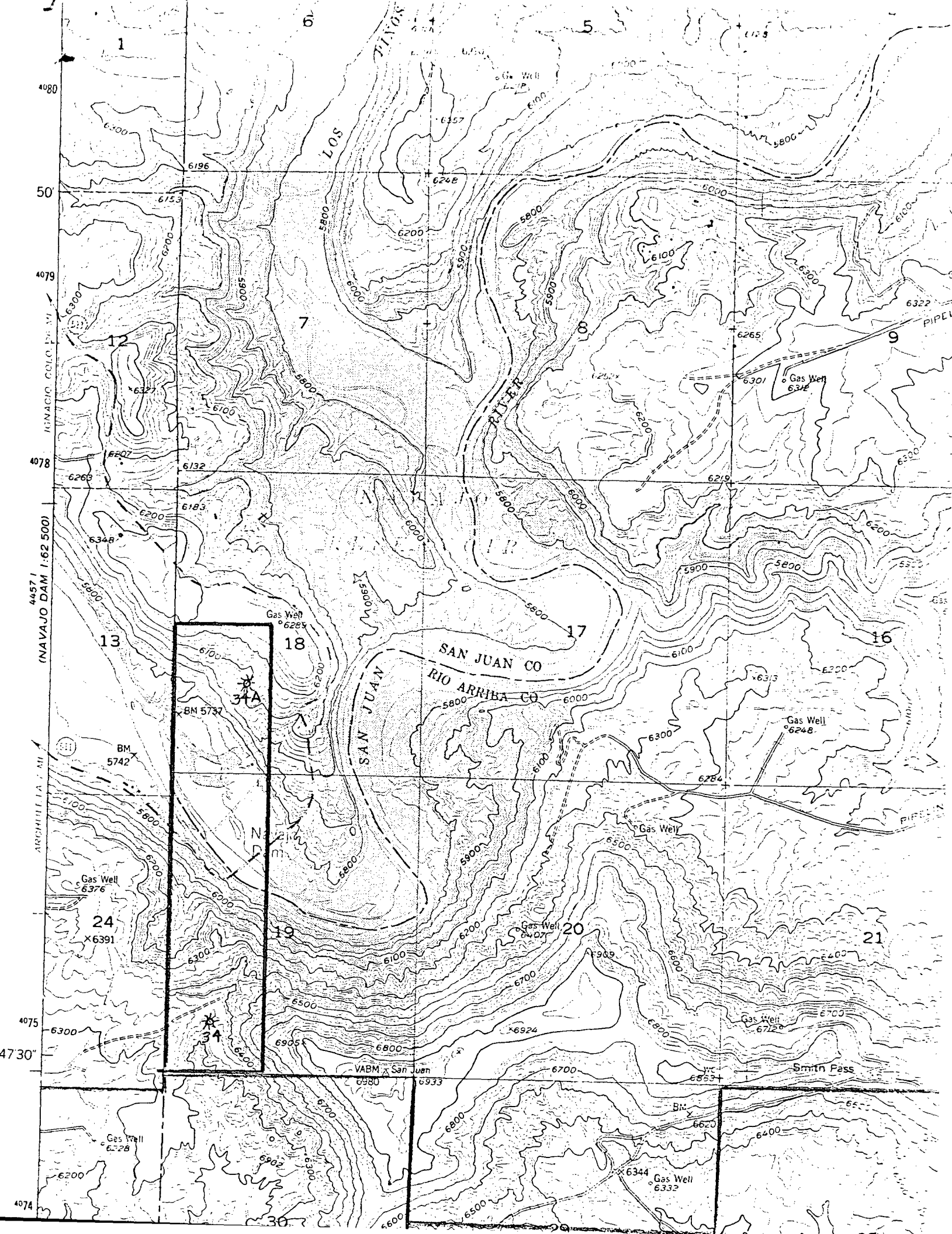
Date Surveyed
Dec. 3, 1979

Registered Professional Engineer and/or Land Surveyor

John A. Kroeger, PLS

Certificate No.

1941

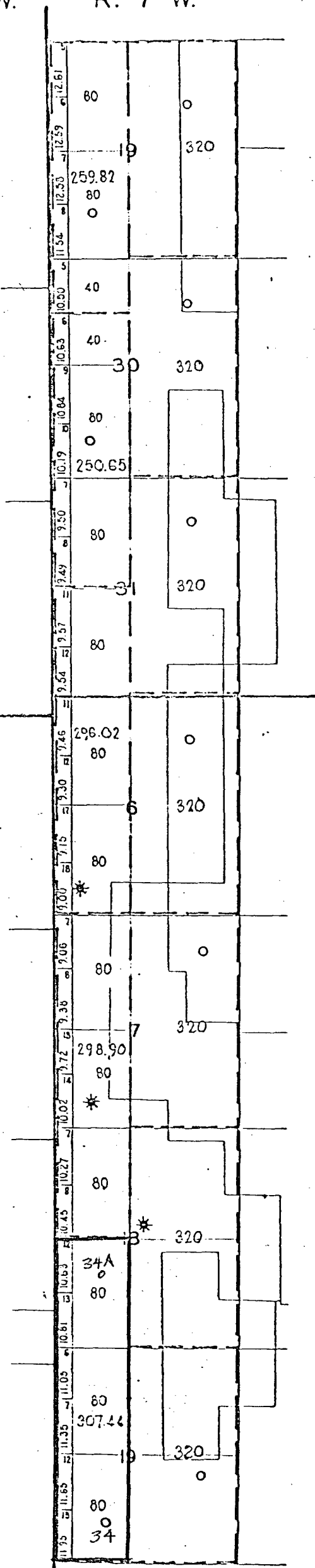


R. 8 W.

R. 7 W.

T.
31
N.

T.
30
N.



—PORTION OF—
NORTHEAST
BLANCO
UNIT

SAN JUAN & RIO ARRIBA
COUNTIES
NEW MEXICO

- Completed Oil Well
- Location or Drilling Well
- ◇ Dry Hole
- ✕ Abandoned Location
- * Gas Well

SCALE: 1" = 3000' PAM SITE