



POWERS ELEVATION

OIL WELL ELEVATIONS AND LOCATIONS
CHERRY CREEK PLAZA, SUITE 1201
600 SOUTH CHERRY STREET
DENVER, COLORADO 80222
PHONE NO. 303/321-2217

April 21, 1980

New Mexico Oil & Gas Conservation Commission
Joe D. Ramey, Director
P.O. Box 2088
Santa Fe, New Mexico 87501

RE: Filing Exception to Rule 104F
Supron Energy Corporation
Newsom "A" #7E (formerly Newsom "A" #9)
NW NE Sec. 10 T26N R8W
605' FNL & 1705' FEL
San Juan County, New Mexico

Dear Sir:

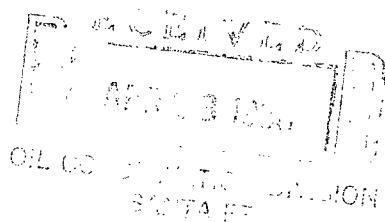
Supron Energy Corporation requests an exception to Rule 104F for the above-mentioned well location. Enclosed is a location and elevation plat and a topographic map.

An exception was filed and approved December 7, 1979, for the Newsom #9 which was to be drilled to the Pictured Cliffs formation. The well was placed there due to topographic difficulties. The operator now wishes to dual complete the well in the Pictured Cliffs and the Dakota formations, changing the name of the well to the Newsom "A" #7E an infill well of the Newsom "A" #7 (1190' FSL & 1870' FEL).

Supron Energy Corporation has the operating rights to the Dakota formation on all the surrounding acreage except for the SW $\frac{1}{4}$ Sec. 2 T26N R8W, which is controlled by J. Glenn Turner, Jr. et al, Frank Schultz, and William G. Webb and the NW $\frac{1}{4}$ Sec. 15 T26N R8W, which is controlled by Consolidated Oil & Gas, Inc.

Letters will be sent by certified mail to the offsetting leaseholders for their consent or objection and will then be forwarded to your office.

Please note that this exception was originally granted for John H. Hill and Gordon L. Llewellyn, but has been returned to Supron Energy Corporation.



April 21, 1980
Page 2

Should you require any additional information in order to approve this application for exception to Rule 104F, please call.

Thank you.

Sincerely,

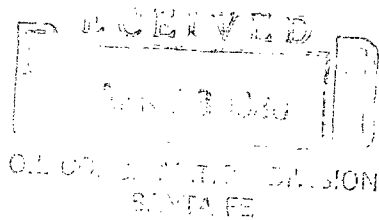
POWERS ELEVATION

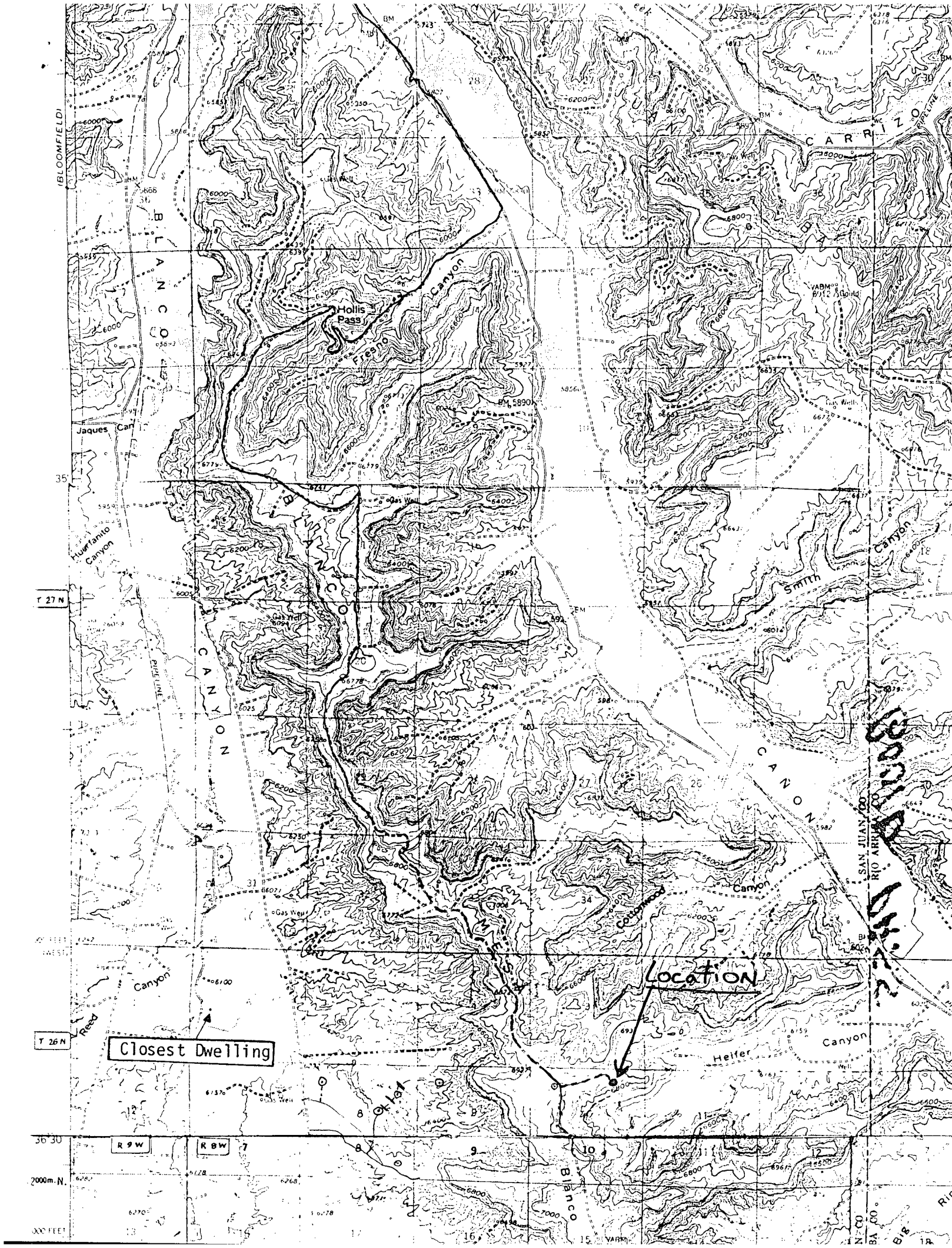


Darryl Cooper

DC:vg
Enclosures

cc: (2) New Mexico Oil & Gas Conservation Commission, Aztec, New Mexico
Frances Cooper, Dallas, Texas
Steve Connor, Dallas, Texas





OIL CONSERVATION DIVISION

P. O. BOX 2088

SANTA FE, NEW MEXICO 87501

Form C-102
Revised 10-1-79

EXHIBIT "A"

All distances must be from the outer boundaries of the Section.

Location & Elevation Plat

STATE OF NEW MEXICO
ENERGY AND MINERALS DEPARTMENT

Operator John H. Hill + Gordon L. Llewellyn Lease SF-078430 Well No. Newsom "A" #9 (#7E)

Unit Letter B Section 10 Township 26 N. Range 8 W. County San Juan

Actual Footage Location of Well:

605 feet from the North line and 1705' feet from the East line

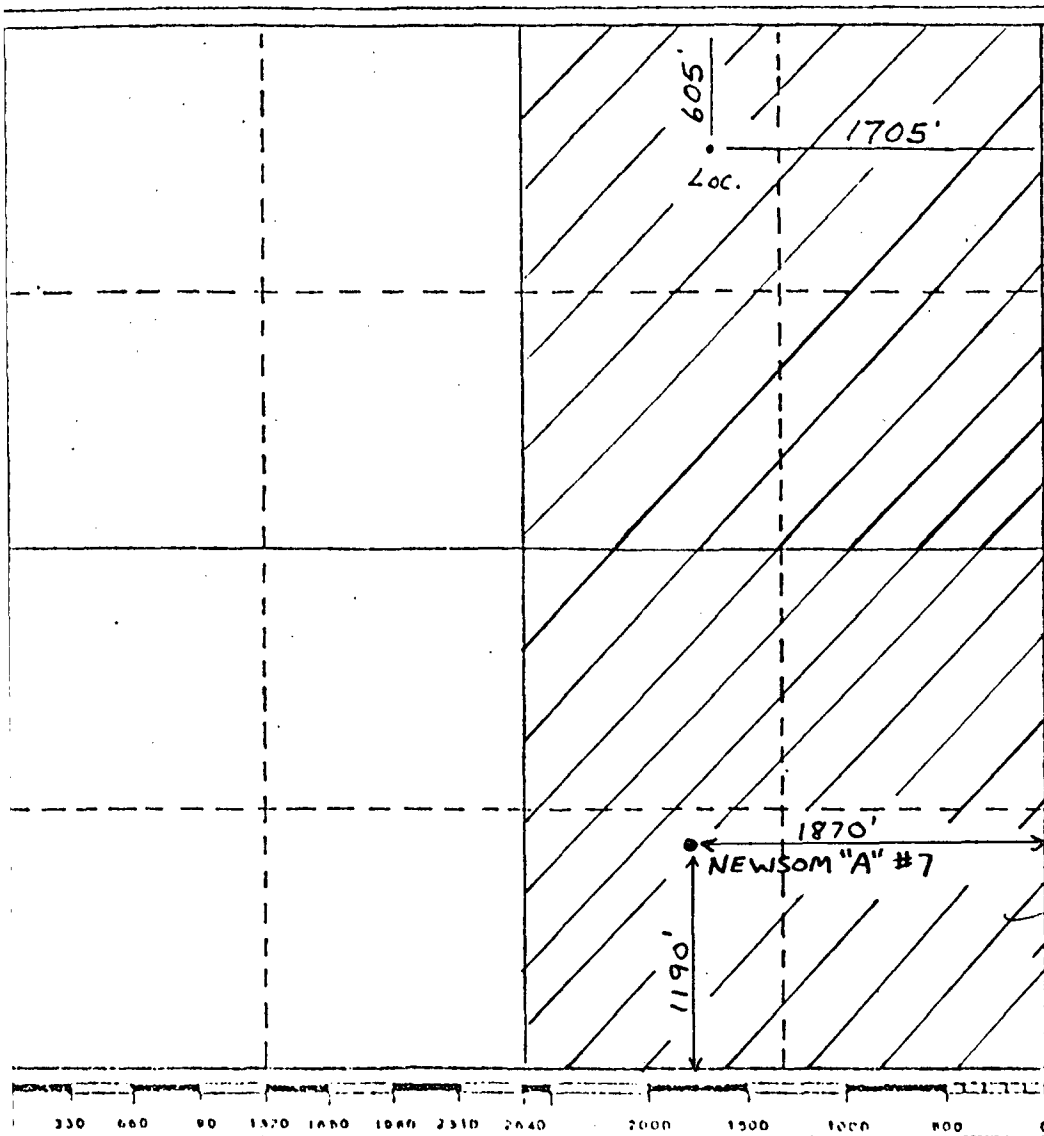
Ground Level Elev. 6903' Producing Formation Pictured Cliffs Pool Ballard Pictured Cliffs Dedicated Acreage: 160 Acres

1. Outline the acreage dedicated to the subject well by colored pencil or hatchure marks on the plat below.
2. If more than one lease is dedicated to the well, outline each and identify the ownership thereof (both as to working interest and royalty).
3. If more than one lease of different ownership is dedicated to the well, have the interests of all owners been consolidated by communitization, unitization, force-pooling, etc?

☐ Yes ☐ No If answer is "yes," type of consolidation _____

If answer is "no," list the owners and tract descriptions which have actually been consolidated. (Use reverse side of this form if necessary.) _____

No allowable will be assigned to the well until all interests have been consolidated (by communitization, unitization, forced-pooling, or otherwise) or until a non-standard unit, eliminating such interests, has been approved by the Division.



CERTIFICATION

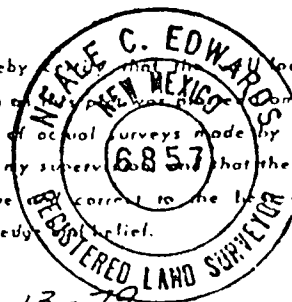
I hereby certify that the information contained herein is true and complete to the best of my knowledge and belief.

George Lapaseotes
Name George Lapaseotes
V. Pres. Powers Elevation
Position Agent Consultant for

Company
Hill & Llewellyn

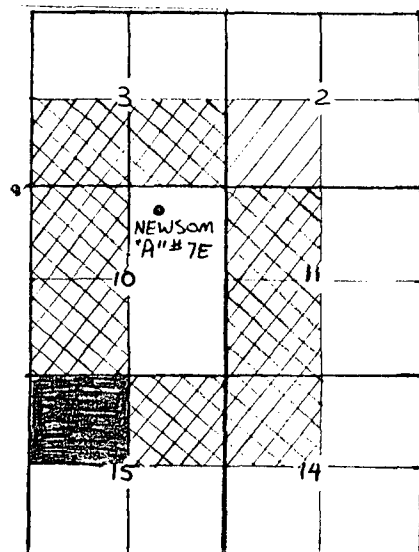
Date
November 13, 1979

I hereby certify that the location shown on this plat is true and correct to the best of my knowledge and belief.



Date Surveyed 11-13-79
Neale C. Edwards
Registered Professional Engineer
and/or Land Surveyor

6857
Certificate No.



Offset Mineral Ownership (Dakota)

LEGEND

- Supron Energy Corporation
- J. Glenn Turner, Jr. et al., Frank Schultz, William G. Webb In
- Consolidated Oil & Gas, Inc.

TURNER, HITCHINS, MCINERNEY, WEBB & HARTNETT

ATTORNEYS AND COUNSELORS AT LAW

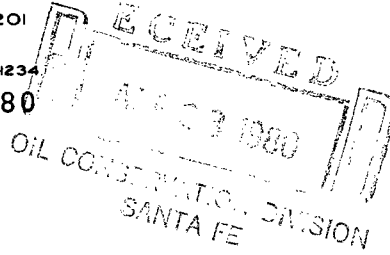
1700 MERCANTILE BANK BUILDING

DALLAS, TEXAS 75201

TEL: (214) 742-3481

TELECOPIER: (214) 742-1234

April 21, 1980



Mr. Joe D. Ramey, Director
New Mexico Oil & Gas Conversation Commission
P.O. Box 2088
Santa Fe, New Mexico 87501

Waiver

Re: Filing Exception to Rule 104F
Supron Energy Corporation
Newsom "A" #7E
NW NE Sec. 10 T26N R8W
San Juan County, New Mexico

Dear Mr. Ramey:

With respect to the captioned location, I, as the owner of a mineral interest under the SW/4 of Section 2 T26N R8W, San Juan County, New Mexico, herewith consent to the non-standard location of the subject well.

Yours very truly,

William G. Webb

WGW:bad

cc: Mr. Darryl Cooper
Mr. Frank A. Schultz

J. GLENN TURNER, JR.

APR 29 1980
OIL CONSERVATION DIVISION
SANTA FE
OIL AND GAS-INVESTMENTS
1700 MERCANTILE BANK BUILDING
DALLAS, TEXAS 75201

April 28, 1980

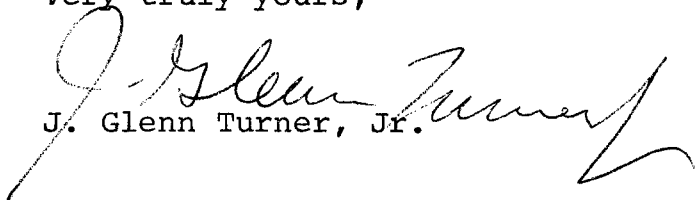
Mr. Joe D. Ramey, Director
New Mexico Oil & Gas
Conservation Commission
P.O. Box 2088
Santa Fe, New Mexico 87501

Re: Filing Exception to Rule 104F
Supron Energy Corporation
Newsom "A" #7E
NW NE Sec. 10 T26N R8W
San Juan County, New Mexico

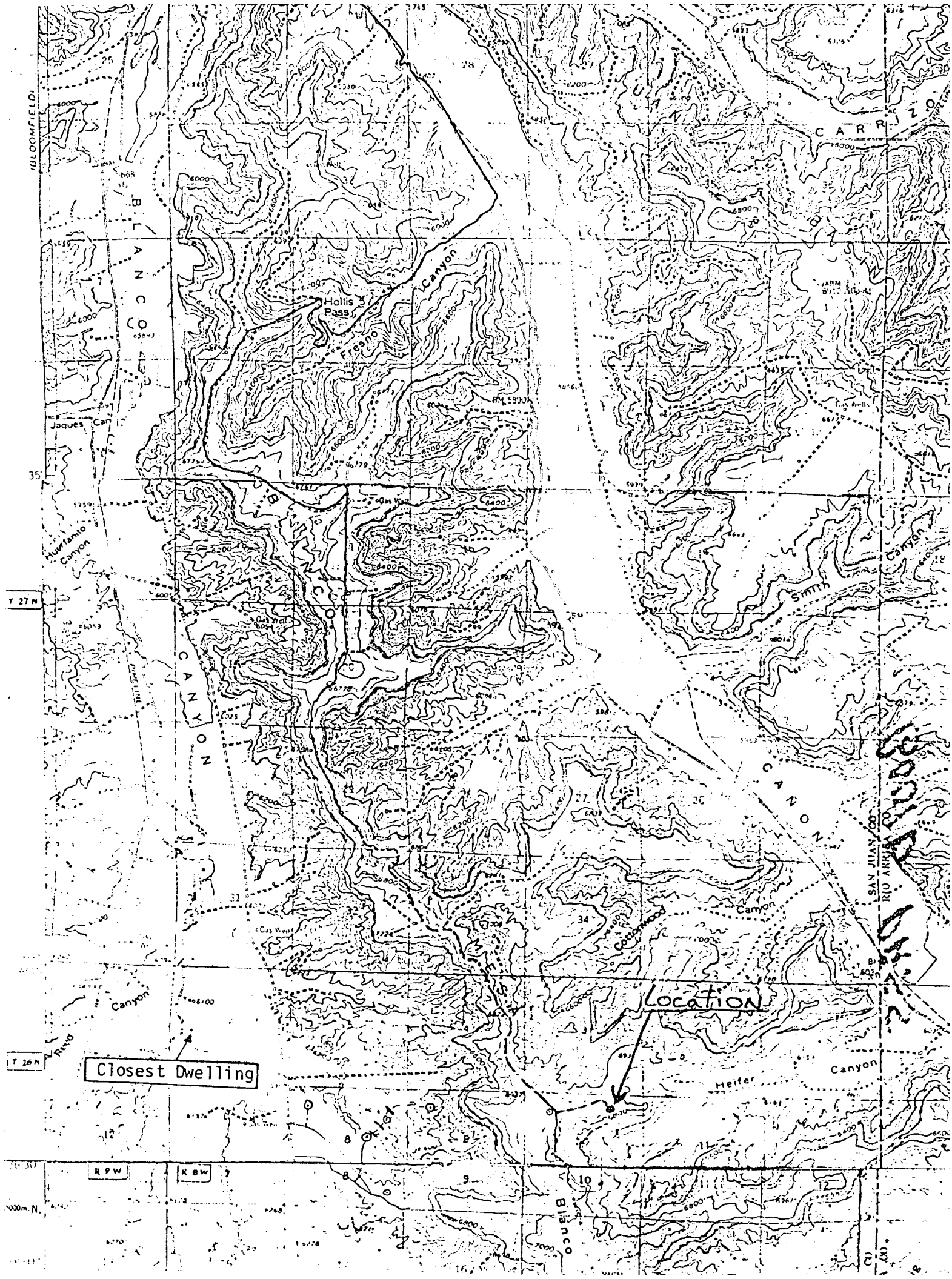
Dear Mr. Ramey:

This letter shall evidence that I have no objection to the proposed location of the captioned well as shown on the attached location and elevation plat.

Very truly yours,


J. Glenn Turner, Jr.

JGT,JR:lgk
Enclosure
cc Darryl Cooper



OIL CONSERVATION DIVISION

P. O. BOX 2088

STATE OF NEW MEXICO

SANTA FE, NEW MEXICO 87501

Form C-102

Revised 10-1-79

EXHIBIT "A"

ENERGY AND MINERALS DEPARTMENT

All distances must be from the outer boundaries of the Section.

Location & Elevation Plat

Operator

Lease

Well No.

John H. Hill + Gordon L. Llewellyn

SF-078430

OIL CONSERVATION DIVISION

Newsom "A" #9 (#7)

Unit Letter

Section

Township

Range

County

SANTA FE

B

10

26 N.

8 W.

San Juan

Actual Footage Location of Well:

605

feet from the

North

line and

1705'

feet from the

East

line

Ground Level Elev.

Producing Formation

Pool

Dedicated Acreage:

6903'

Pictured Cliffs

Ballard Pictured Cliffs

160

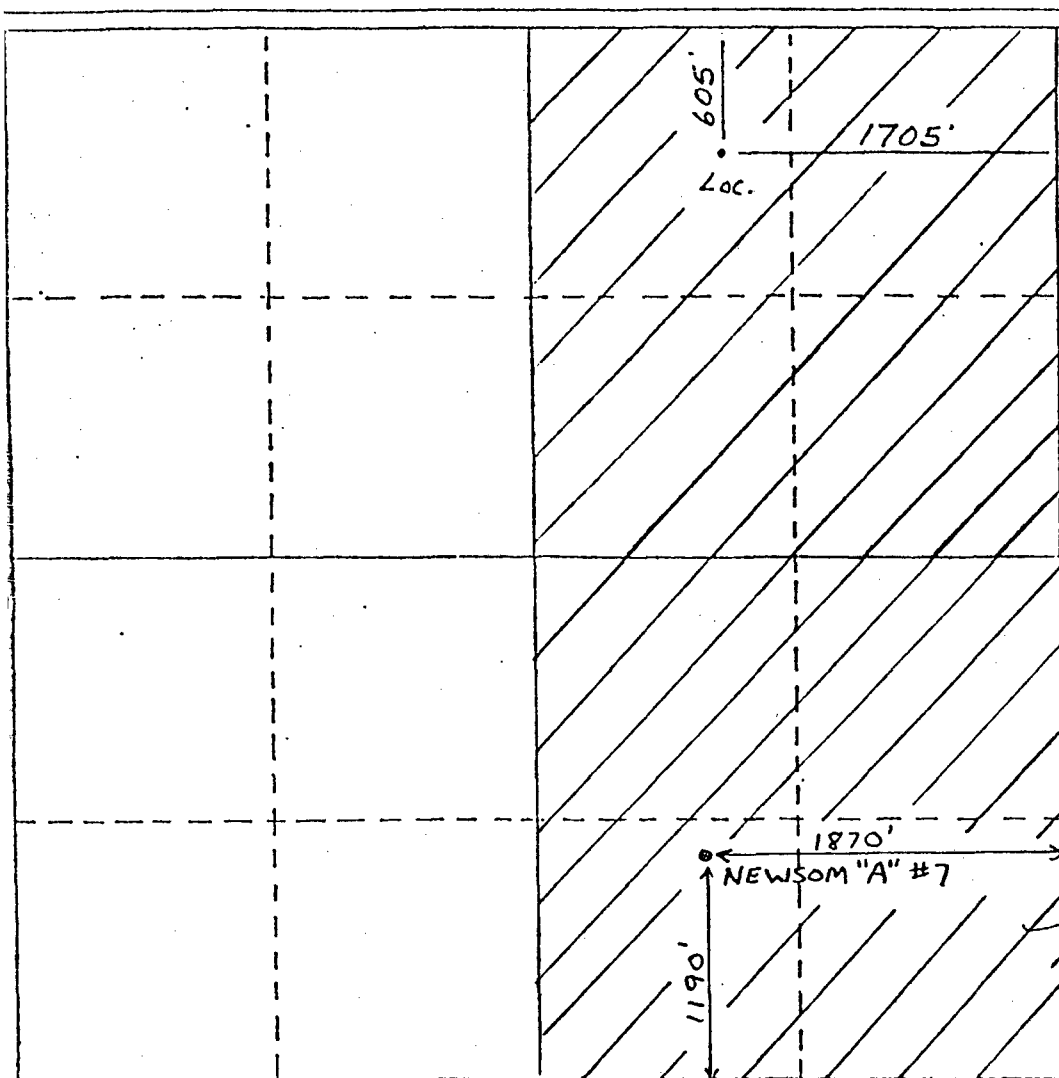
Acres

1. Outline the acreage dedicated to the subject well by colored pencil or hatchure marks on the plat below.
2. If more than one lease is dedicated to the well, outline each and identify the ownership thereof (both as to working interest and royalty).
3. If more than one lease of different ownership is dedicated to the well, have the interests of all owners been consolidated by communitization, unitization, force-pooling, etc?

☐ Yes ☐ No If answer is "yes," type of consolidation _____

If answer is "no," list the owners and tract descriptions which have actually been consolidated. (Use reverse side of this form if necessary.) _____

No allowable will be assigned to the well until all interests have been consolidated (by communitization, unitization, forced-pooling, or otherwise) or until a non-standard unit, eliminating such interests, has been approved by the Division.



CERTIFICATION

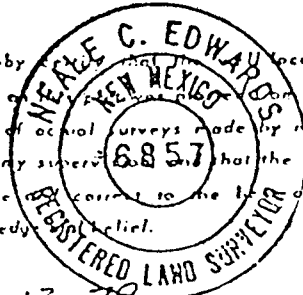
I hereby certify that the information contained herein is true and complete to the best of my knowledge and belief.

George Lapaseotes
Name George Lapaseotes
V. Pres. Powers Elevation
Position Agent Consultant for

Company
Hill & Llewellyn

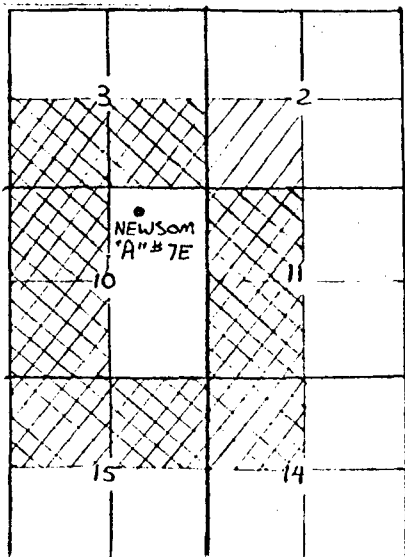
Date
November 13, 1979

I hereby certify that the location shown on this plat is true and correct to the best of my knowledge and belief.



11-13-79
Date Surveyed
Frank C. Chambers
Registered Professional Engineer
and/or Land Surveyor

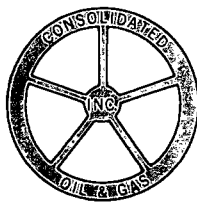
6857
Certificate No.



Offset Mineral Ownership(Dakota)

LEGEND

- Supron Energy Corporation
- J. Glenn Turner, Jr. et al., Frank Schultz, William G. Webb



LINCOLN TOWER BUILDING
1860 LINCOLN STREET
DENVER, COLORADO 80295
(303) 861-5252

Consolidated Oil & Gas, Inc.

RECEIVED
OIL CONSERVATION COMMISSION
SANTA FE, NEW MEXICO
April 22, 1980

Mr. Joe E. Ramey, Director
New Mexico Oil & Gas Conservation Commission
P. O. Box 2088
Santa Fe, New Mexico 87501

Re: Filing Exception to Rule 104F
Supron Energy Corporation
Newsom "A" #7E
NW NE Sec. 10, T26N, R8W
San Juan County, New Mexico

Dear Mr. Ramey:

Consolidated Oil & Gas, Inc. has no objection to
Supron Energy Corporation drilling the above-captioned
location to the Dakota formation.

Yours very truly,

CONSOLIDATED OIL & GAS, INC.

Floyd E. Ellison, Jr.

Floyd E. Ellison, Jr.
Vice President, Operations
Rocky Mountain Division

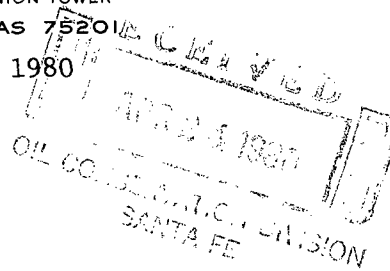
FEE:lt
cc: Supron Energy Corporation

FRANK A. SCHULTZ

730 FIDELITY UNION TOWER

DALLAS, TEXAS 75201

April 22, 1980



Mr. Joe D. Ramey, Director
New Mexico Oil & Gas Conversation Commission
P. O. Box 2088
Santa Fe, New Mexico 87501

Re: Filing Exception to Rule 104F
Supron Energy Corporation
Newsom "A" #7E
NW NE Sec. 10 T26N R8W
San Juan County, New Mexico

Dear Mr. Ramey:

With respect to the captioned location, I, as the owner
of a mineral interest under the SW/4 of Section 2 T26N R8W,
San Juan County, New Mexico, herewith consent to the non-
standard location of the subject well.

Yours very truly,

A handwritten signature in cursive script that reads 'Frank A. Schultz'.

Frank A. Schultz

FAS:kj