



POWERS ELEVATION

NSL - 1283

OIL WELL ELEVATIONS AND LOCATIONS
CHERRY CREEK PLAZA, SUITE 1201
800 SOUTH CHERRY STREET
DENVER, COLORADO 80222
PHONE NO. 303/321-2217

November 3, 1980

New Mexico Oil & Gas Conservation Commission
Mr. Joe D. Ramey, Director
P.O. Box 2088
Santa Fe, New Mexico 87501

RE: Filing Exception to Rule 104F
Supron Energy Corporation
Jicarilla F#1-A
SE NW Sec 27 T26N R4W
1650' FNL & 1520' FWL
Rio Arriba County, New Mexico

NSL
Rule 104 F
Held for district
approval

Dear Mr. Ramey:

Supron Energy Corporation requests an exception to Rule 104F for the above-captioned well location. Enclosed is a location and elevation plat and a topographic map.

Supron Energy Corporation has the operating rights to the Wildhorse-Dakota Pool formation on all offset acreage within a $1\frac{1}{4}$ mile radius of the above-referenced location, therefore there are no offset operators to be notified of this request.

This request is made to secure permission to drill the proposed well on the location as staked, which is not in compliance with the 330 foot tolerance required for oil wells.

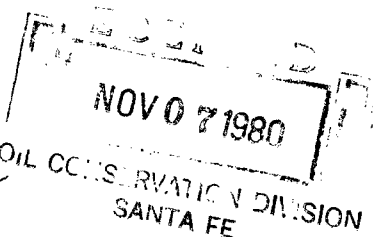
Should you require any additional information in order to approve this application for exception to Rule 104F, please call.

Thank you.

Sincerely,

POWERS ELEVATION

Connie L. Frailey
Connie L. Frailey
Manager, Environmental Services



CLF:sb
Enclosures

cc: 2 copies to - New Mexico Oil & Gas Conservation Commission, Aztec, NM
Steve Conner, Dallas- Texas
Lura Wallis, Farmington, NM
Rudy Motto, Farmington, NM
Haskell Fleetwood, Farmington, NM

A DIVISION OF PETROLEUM INFORMATION CORPORATION/A SUBSIDIARY OF A.C. NIELSEN COMPANY

NEW MEXICO OIL CONSERVATION COMMISSION
WELL LOCATION AND ACREAGE DEDICATION PLAT

Form 6-102
Supersedes C-128
Effective 1-1-65

All distances must be from the outer boundaries of the Section.

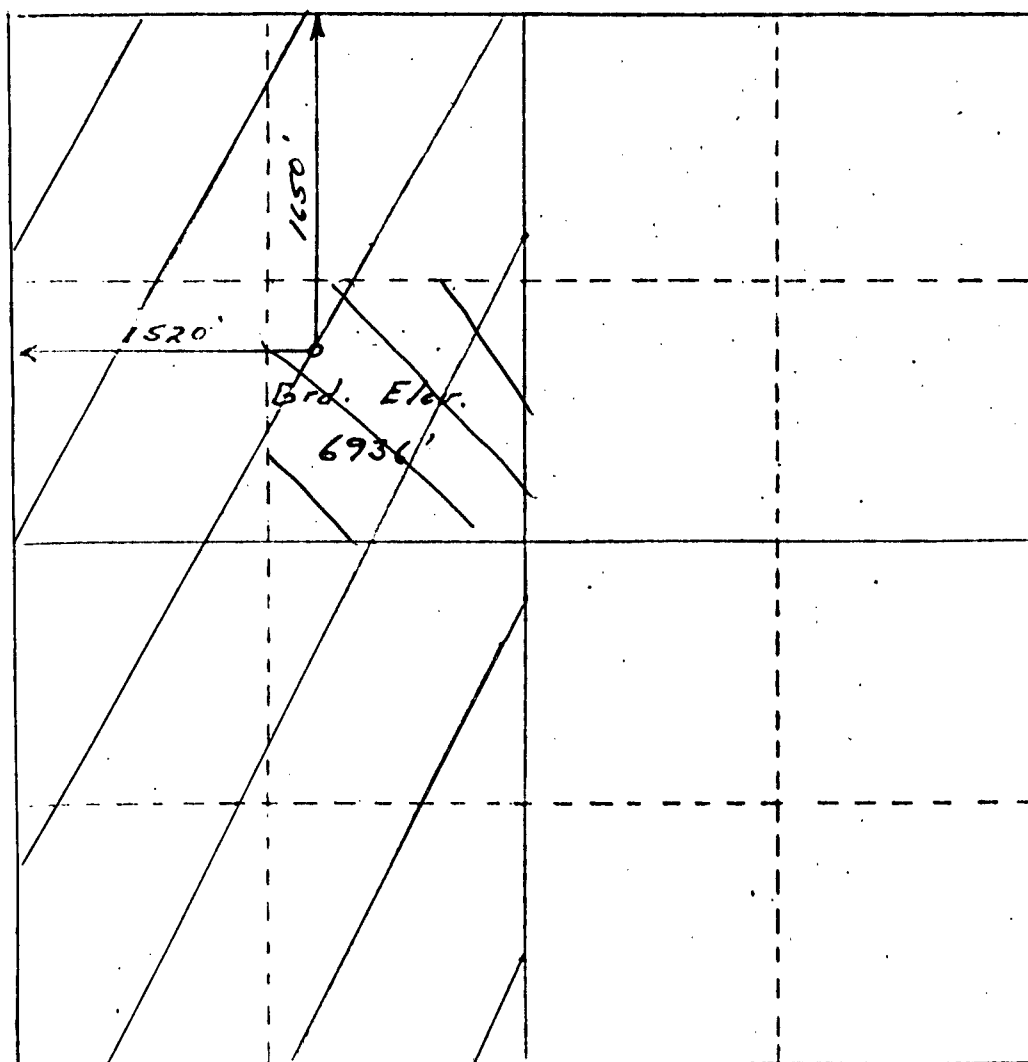
Operator Supron Energy Corporation		Lease Tribal 107		Well No. Jicarilla FNM	
Well Letter F	Section 27	Township 26 NORTH	Range 4 West	County Rio Arriba	
General Footage Location of Well: 1650 feet from the North line and 1520 feet from the West line					
Ground Level Elev. 6936'	Producing Formation Dakota	Pool Mesa Verde - Dakota		Dedicated Acreage 160 Acres	

1. Outline the acreage dedicated to the subject well by colored pencil or hachure marks on the plat below.
2. If more than one lease is dedicated to the well, outline each and identify the ownership thereof (both as to working interest and royalty).
3. If more than one lease of different ownership is dedicated to the well, have the interests of all owners been consolidated by communitization, unitization, force-pooling, etc?

☐ Yes ☐ No If answer is "yes," type of consolidation _____

If answer is "no," list the owners and tract descriptions which have actually been consolidated. (Use reverse side of this form if necessary.) _____

No allowable will be assigned to the well until all interests have been consolidated (by communitization, unitization, forced-pooling, or otherwise) or until a non-standard unit, eliminating such interests, has been approved by the Commission.



CERTIFICATION

I hereby certify that the information contained herein is true and complete to the best of my knowledge and belief.

George Lapaseotes
Name **George Lapaseotes**

V. Pres. - Powers Elevation
Position

Agent Consultant for

Company

Supron Energy Corporation

Date

September 2, 1980

I hereby certify that the well location shown on this plat was plotted from field notes of actual surveys made by me or under my supervision, and that the same is true and correct to the best of my knowledge and belief.



13 July 1980

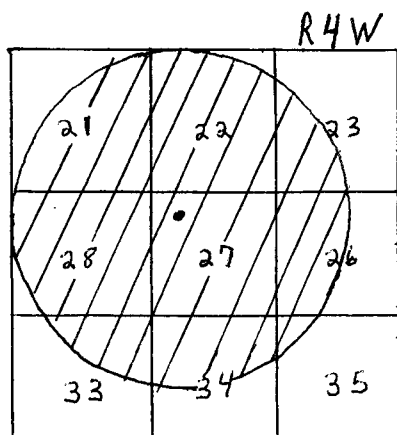
Date Surveyed

Gerald G. Huddleston

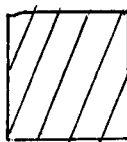
Registered Professional Engineer and/or Land Surveyor

6844

Certificate No.



T26N



Supron Energy Corporation

UNITED STATES
DEPARTMENT OF THE INTERIOR
GEOLOGICAL SURVEY

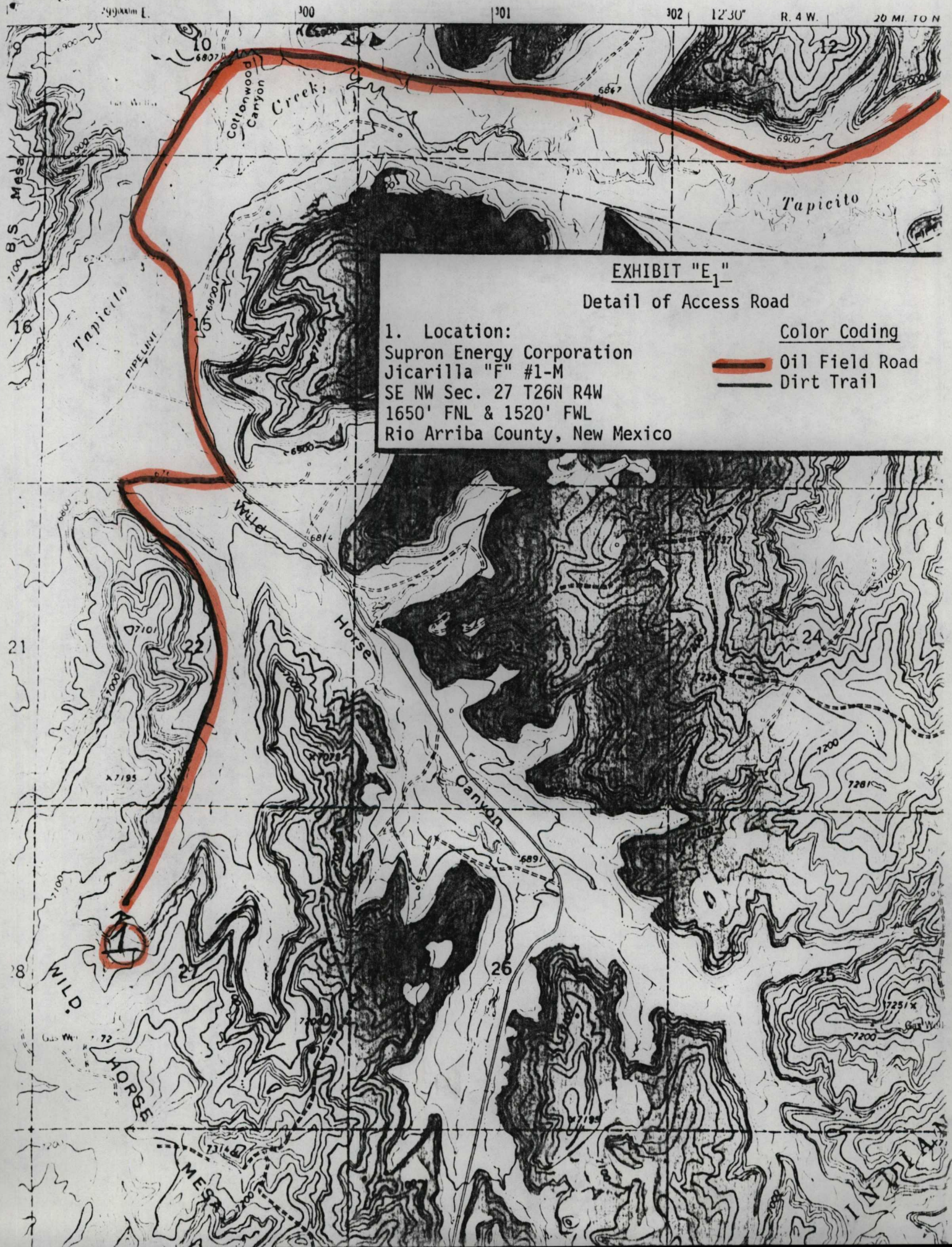
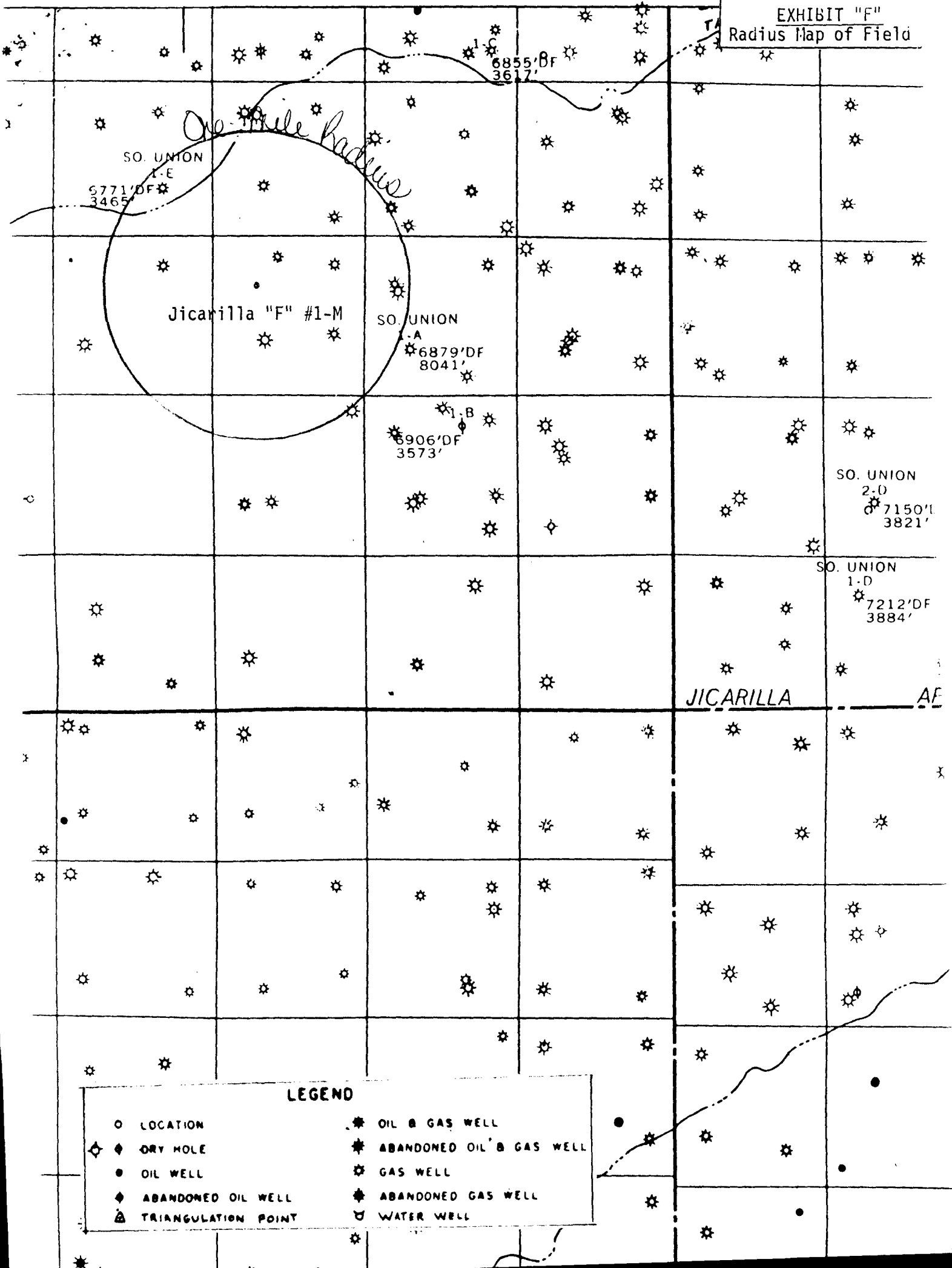


EXHIBIT "F"

Radius Map of Field



LEGEND

- | | |
|-----------------------|----------------------------|
| ○ LOCATION | ★ OIL & GAS WELL |
| ◆ DRY HOLE | ★ ABANDONED OIL & GAS WELL |
| ● OIL WELL | ★ GAS WELL |
| ◆ ABANDONED OIL WELL | ★ ABANDONED GAS WELL |
| △ TRIANGULATION POINT | ○ WATER WELL |

OIL CONSERVATION COMMISSION
Aztec DISTRICT

OIL CONSERVATION COMMISSION
BOX 2088
SANTA FE, NEW MEXICO

DATE November 22, 1980

RE: Proposed MC _____
Proposed DHC _____
Proposed NSL x _____
Proposed SWD _____
Proposed WFX _____
Proposed PMX _____

Gentlemen:

I have examined the application dated November 6, 1980
for the Superior Energy Corp. Jicmilla F #1-A F-22-26N-4W
Operator Lease and Well No. Unit, S-T-R

and my recommendations are as follows:

Approve

Yours very truly,

Frank J. Chang