

# Mobil Producing Texas & New Mexico Inc.

NOV 24 1980  
OIL CONSERVATION DIVISION  
SANTA FE

NINE GREENWAY PLAZA—SUITE 2700  
HOUSTON, TEXAS 77046

November 19, 1980

New Mexico Energy & Minerals Department (3)  
Oil Conservation Division  
State Land Office Building  
P.O. Box 2088  
Santa Fe, New Mexico 87501

NSL - 1291  
Rule 2.C R-5353  
Waiting in District  
Approval only  
OK 12-4-80

7.01  
UNORTHODOX LOCATION  
MOBIL PRODUCING TX. & N.M. INC.  
LINDRITH B UNIT  
WELL #15  
CHACON-DAKOTA ASSOCIATED POOL  
RIO ARriba COUNTY, NEW MEXICO

Gentlemen:

Mobil Producing TX. & N.M. Inc. (MPTM) respectfully requests permission to drill the subject well at an unorthodox location. The location was moved at the landowner's request, because the original location was too close to his cabin. This proposed well location was moved in a north-westerly direction which caused it to be less than 330 feet from an inner subdivision line as required by Rule 2(b) of Order No. R-5353.

Proposed Well #15 will be located as follows:

1157' from the South line and  
2293' from the East line of  
Sec. 21, T24N, R3W  
Rio Arriba County, New Mexico

In support of this request, the following items are submitted:

1. Federal Form 9-331C - "Application to Drill"
2. Form C-102 - "Well Location and Acreage Dedication Plat"
3. Plat showing offset lease owners and topography

MPTM respectfully requests that this unorthodox well location be approved

# Mobil

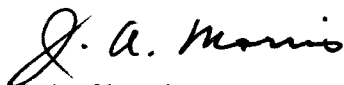
New Mexico Energy & Minerals  
Department

-2-

November 19, 1980

administratively as provided for in Rule 2(c) of Order No. R-5353.  
The land on all sides of the 160-acre drilling unit assigned to Well  
#15 is leased by MPTM.

Yours very truly,



J.A. Morris  
Regulatory Engineering  
Supervisor

LSHall/jrs  
Attachments

cc: District Supervisor - Aztec  
USGS - Farmington

UNITED STATES  
DEPARTMENT OF THE INTERIOR  
GEOLOGICAL SURVEY

## APPLICATION FOR PERMIT TO DRILL, DEEPEN, OR PLUG BACK

1a. TYPE OF WORK DRILL <input checked="" type="checkbox"/> DEEPEN <input type="checkbox"/> PLUG BACK <input type="checkbox"/>			5. LEASE DESIGNATION AND SERIAL NO. Santa Fe 078913	
b. TYPE OF WELL OIL WELL <input checked="" type="checkbox"/> GAS WELL <input type="checkbox"/> OTHER <input type="checkbox"/> SINGLE BONE <input checked="" type="checkbox"/> MULTIPLE BONE <input type="checkbox"/>			6. IF INDIAN, ALLOTTEE OR TRIBE NAME	
2. NAME OF OPERATOR Mobil Producing TX. & N.M. Inc.			7. UNIT AGREEMENT NAME Lindrith B Unit	
3. ADDRESS OF OPERATOR Nine Greenway Plaza, Suite 2700, Houston, TX 77046			8. FARM OR LEASE NAME	
4. LOCATION OF WELL (Report location clearly and in accordance with any State requirements.)* At surface 1157' FSL & 2293' FEL, Sec. 21, T24N, R3W At proposed prod. zone Same as surface			9. WELL NO. 15	
14. DISTANCE IN MILES AND DIRECTION FROM NEAREST TOWN OR POST OFFICE* 50 miles Southeast from Farmington			10. FIELD AND POOL, OR WILDCAT Chacon-Dakota Associated	
15. DISTANCE FROM PROPOSED* LOCATION TO NEAREST PROPERTY OR LEASE LINE, FT. (Also to nearest drilg. unit line, if any) 1157'			11. SEC., T., R. M., OR B.L. AND SURVEY OR AREA Sec. 21 T24N R3W	
16. NO. OF ACRES IN LEASE 26,365.43			12. COUNTY OR PARISH Rio Arriba	
17. NO. OF ACRES ASSIGNED TO THIS WELL 160			13. STATE NM	
18. DISTANCE FROM PROPOSED LOCATION* TO NEAREST WELL, DRILLING, COMPLETED, OR APPLIED FOR, ON THIS LEASE, FT. 1950' WSW to Well #3			20. ROTARY OR CABLE TOOLS Rotary	
19. PROPOSED DEPTH 8,000'			22. APPROX. DATE WORK WILL START* Dec. 1, 1980	
21. ELEVATIONS (Show whether DF, RT, GR, etc.) 7064' - GR				

## PROPOSED CASING AND CEMENTING PROGRAM

SIZE OF HOLE	SIZE OF CASING	WEIGHT PER FOOT	SETTING DEPTH	QUANTITY OF CEMENT
17-1/2"	12-3/4" *	45.51# H-40	0 - 400'	1. Circulate to surface w/300 sx.
11"	8-5/8" *	24# S-80	0 - 3100'	2. Circulate to surface w/900 sx.
		28# S-80	3100 - 3900'	
7-7/8"	5-1/2" *	15.5# K-55	0 - 7000'	3. Circulate to approx. 3800' w/950 sx. in two stages
		17# K-55	7000 - 7700'	

\*All casing will be new.

## CEMENTING PROGRAM

1. Class B with 2% CaCl<sub>2</sub>.      2. Lite weight & Class B      3. Lite weight & Class B

## MUD PROGRAM

Depth	Type of Mud	Weight	Viscosity	ph	Water Loss
0 - 400'	Spud mud	9.0 - 9.2	35-45	9+	NC
400' - TD	Fresh Water Gel	8.8	35-40	9+	10 cc's

## BLOWOUT PREVENTER PROGRAM

See Attachment

## LOGGING PROGRAM

Type	Depth
IES	Surf. to TD
FDL/CNL	Surf. to TD

IN ABOVE SPACE DESCRIBE PROPOSED PROGRAM: If proposal is to deepen or plug back, give data on present productive zone and proposed new productive zone. If proposal is to drill or deepen directionally, give pertinent data on subsurface locations and measured and true vertical depths. Give blowout preventer program, if any.

24. SIGNED A. D. Bond TITLE Regulatory Engineering Coordinator II DATE November 11, 1980

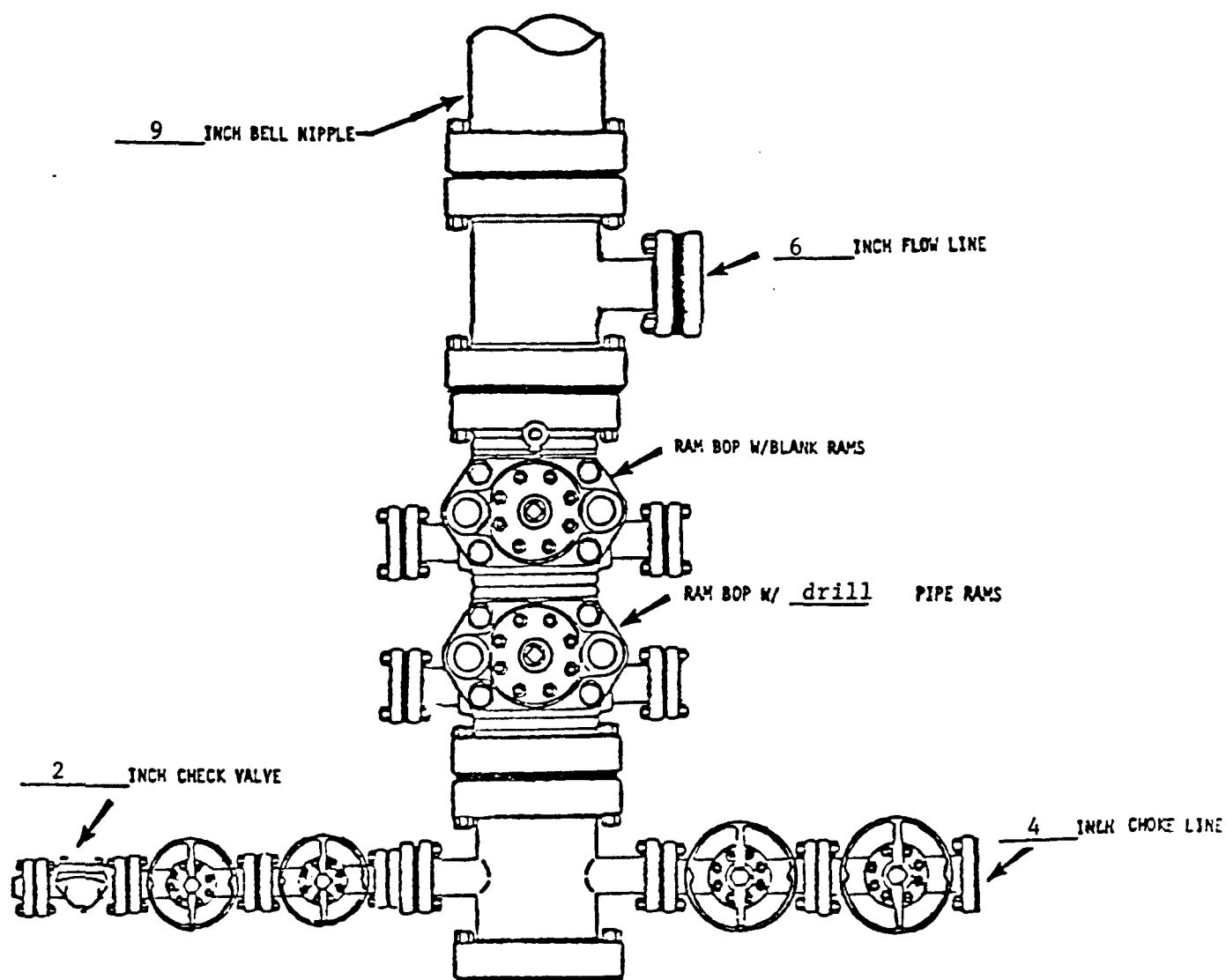
(This space for Federal or State office use)

PERMIT NO. \_\_\_\_\_ APPROVAL DATE \_\_\_\_\_

APPROVED BY \_\_\_\_\_ TITLE \_\_\_\_\_ DATE \_\_\_\_\_

CONDITIONS OF APPROVAL, IF ANY:

\*See Instructions On Reverse Side



BOP rams will be actuated on each trip of drill pipe and will be tested before drilling the plug on each casing string.

\*NOTE: ALL VALVES ARE METAL-TO-METAL SEAL AND FLANGED. ALL COMPONENTS MUST MEET ABOVE MINIMUM PRESSURE RATINGS. ALL COMPONENTS TO BE TESTED TO RATED PRESSURE AFTER ASSEMBLY AND BEFORE FURTHER DOWNHOLE OPERATIONS MAY BE CONDUCTED.

<b>Mobil Producing Texas &amp; New Mexico Inc.</b> Houston, Texas		Scale  Date Drawn Checked Approved Revised
Well # 15	Lindrith B Unit (Lease)	
Rio Arriba	County, NM State	
Blowout Preventer Assembly ( 9 IN. 3000 PSI WP*)		

NEW MEXICO OIL CONSERVATION COMMISSION  
WELL LOCATION AND ACREAGE DEDICATION PLAT

Form C-102  
Supersedes C-128  
Effective 1-1-65

All distances must be from the outer boundaries of the Section.

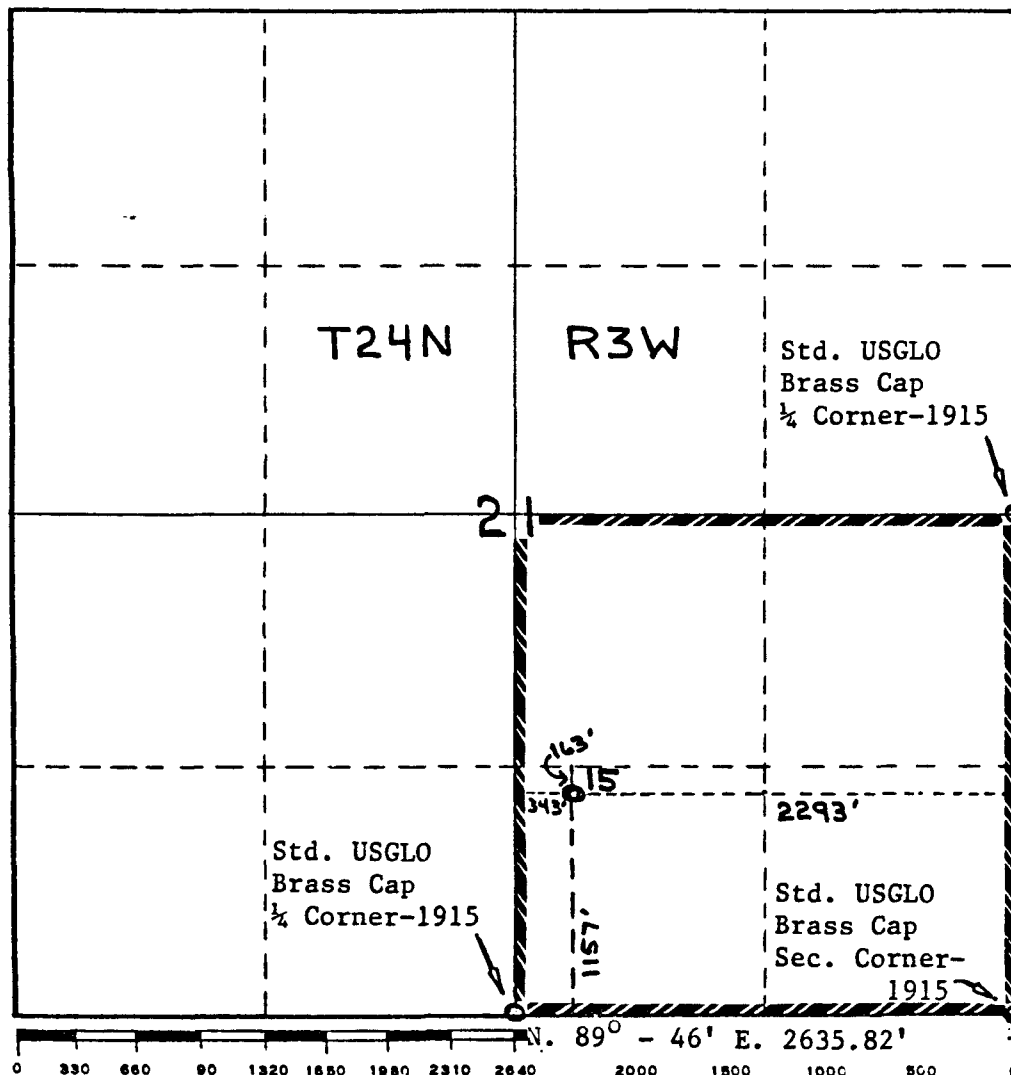
Operator <b>Mobil Producing TX. &amp; N.M. Inc.</b>			Lease <b>Lindrith B Unit</b>		Well No. <b>15</b>
Unit Letter <b>0</b>	Section <b>21</b>	Township <b>24N</b>	Range <b>3W</b>	County <b>Rio Arriba</b>	
Actual Footage Location of Well: <b>1157'</b> feet from the <b>South</b> line and <b>2293'</b> feet from the <b>East</b> line					
Ground Level Elev. <b>7064'</b>	Producing Formation <b>Dakota</b>		Pool <b>Chacon-Dakota Associated</b>		Dedicated Acreage: <b>160</b> Acres

1. Outline the acreage dedicated to the subject well by colored pencil or hatchure marks on the plat below.
2. If more than one lease is dedicated to the well, outline each and identify the ownership thereof (both as to working interest and royalty).
3. If more than one lease of different ownership is dedicated to the well, have the interests of all owners been consolidated by communitization, unitization, force-pooling, etc?

☒ Yes ☐ No If answer is "yes," type of consolidation Unitization

If answer is "no," list the owners and tract descriptions which have actually been consolidated. (Use reverse side of this form if necessary.)

No allowable will be assigned to the well until all interests have been consolidated (by communitization, unitization, forced-pooling, or otherwise) or until a non-standard unit, eliminating such interests, has been approved by the Commission.



CERTIFICATION

I hereby certify that the information contained herein is true and complete to the best of my knowledge and belief.

Name  
**A.D. Bond**  
Position **Regulatory Engineering Coordinator II**  
Company **Mobil Producing TX. & N.M. Inc.**

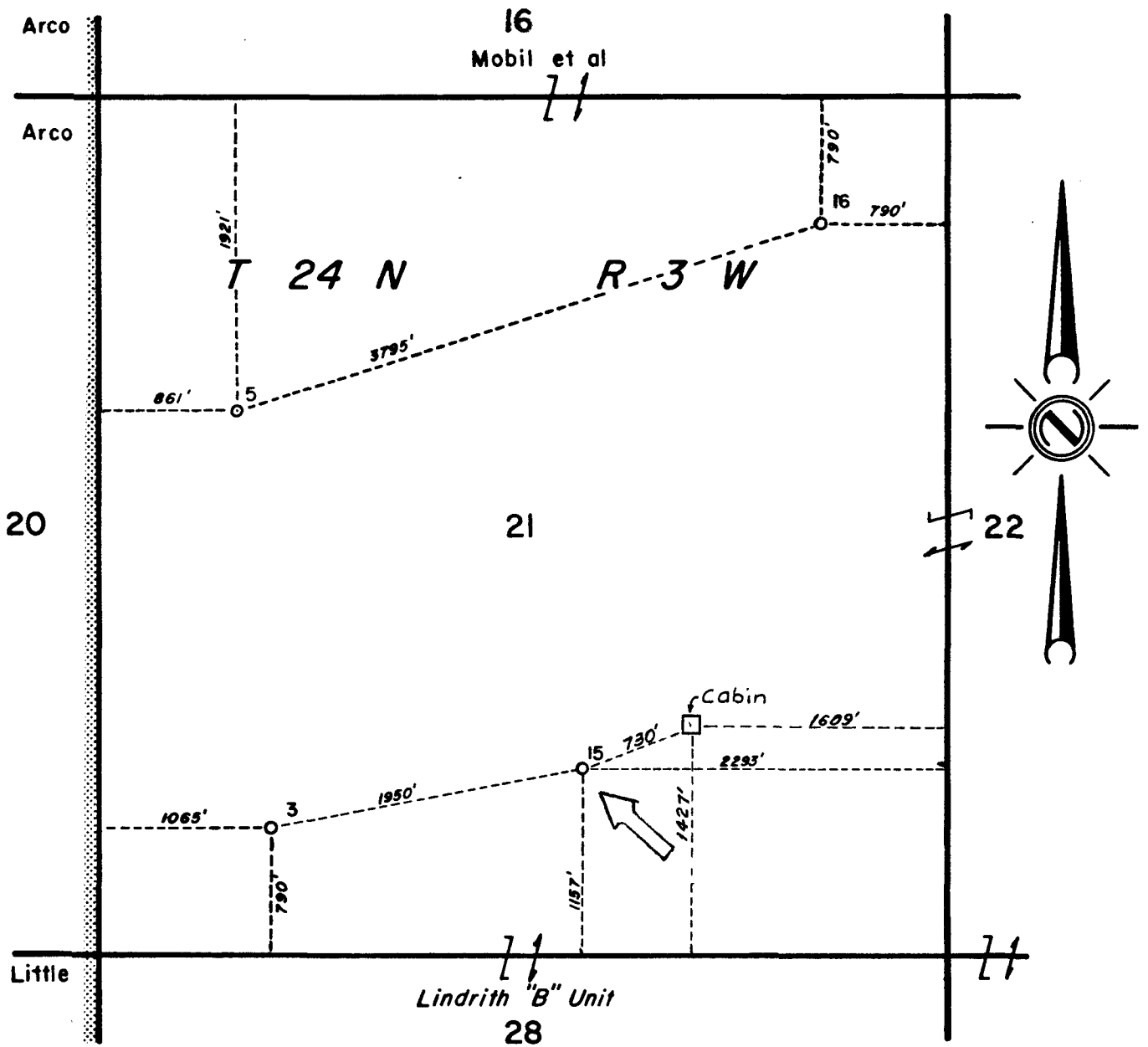
Date  
**November 11, 1980**

I hereby certify that the well location shown on this plat was plotted from field notes of actual surveys made by me or under my supervision, and that the same is true and correct to the best of my knowledge and belief.

Date Surveyed  
**November 7, 1980**  
Registered Professional Engineer and/or Land Surveyor

**H.A. Carson, Jr.**  
Certificate No.

5063



Reserve \_\_\_\_\_ Permit Depth \_\_\_\_\_

Special Instructions \_\_\_\_\_

THE STATE OF TEXAS  
COUNTY OF HARRIS

I hereby certify that this plat truly represents conditions as they actually exist on this lease; that said plat which is drawn to the scale indicated hereon, is to the best of my knowledge true and correct; that it accurately shows said lease with all wells on same; that number and locations of said wells are as indicated hereon; and that this plat correctly reflects all pertinent and required data.

*A. D. Bond*

"Partial Plat"

**Mobil Producing Texas & New Mexico Inc.**  
Houston, Texas

LEASE Lindrith "B" Unit  
WELL NO. 15 DATE 11/19/ 19 80  
DIVISION \_\_\_\_\_ LEASE NO. \_\_\_\_\_  
TOTAL ACRES IN LEASE 26,365.43 ACRES COVERED BY PLAT \_\_\_\_\_  
DESCRIPTION Section 21, T24N, R3W of 26,365.43  
acre unit, 50 mi. SE of Farmington

Rio Arriba County, New Mexico

DRAWN WEK  
SCALE 1" = 1000'

DATE 12-17-79  
FILE NO. 20

FIELD Chacon - Dakota  
Associated

*File NSL-1291*

**Mobil Producing Texas & New Mexico Inc.**

December 9, 1980

Energy and Minerals Department  
Oil Conservation Division  
State Land Office Building  
P. O. Box 2088  
Santa Fe, New Mexico 87501

Attention: Mr. Dick Stamets

LINDRITH "B" UNIT NO. 15  
2293' FEL & 1157' FSL  
SECTION 21, T-24N, R-3W  
RIO ARriba COUNTY, NEW MEXICO  
REVISED LOCATION PLAT

Gentlemen:

Attached is a copy of the revised location plat for the subject well location. The plat shows the original well location, revised well location, location of a cabin and location of cultivated area, as you requested.

Yours very truly,

*Robert M. Hayhurst*

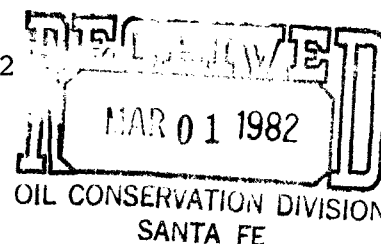
Robert M. Hayhurst

RMH:lj1  
attachments

cc: A. D. Bond - w/attachments  
R. L. Reagan - w/attachments  
File

**SUPERIOR OIL**

February 25, 1982



Energy and Minerals Department  
New Mexico Oil Conservation Division  
P.O. Box 2088  
Santa Fe, New Mexico 87501

ATTN: MR. JOE D. RAMEY  
DIRECTOR

RE: Request for Non-Standard Proration  
Unit: State Lse. S/2 NW/4, Sec. 14  
Township 9 South, Range 34 East  
Vada Penn Field  
Lea County, New Mexico

Gentlemen:

This is to advise that The Superior Oil Company, as offset operator to the referenced lease, has no objection to the request for a non-standard 80 acre proration unit as set forth in the request of Robert L. Thornton Company.

Yours very truly,

The Superior Oil Company

*G. Bannantine*

G. Bannantine  
Regulatory Group Manager

GB/dj

CC: ROBERT L. THORNTON CO.