

OIL PRODUCER

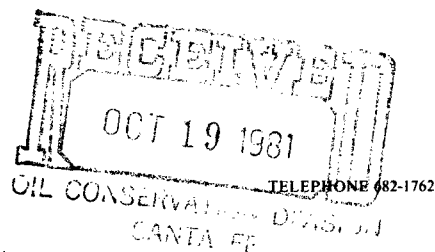
NSL 1443
Rule 104F
Waivers in
Immediate

W. A. MONCRIEF, JR.

400 METRO BUILDING
MIDLAND, TEXAS 79701

October 14, 1981

Mr. Joe D. Ramey, Director
Energy and Minerals Department
New Mexico Oil Conservation Commission
P.O. Box 2088
Santa Fe, New Mexico 87501



Joe:
would you call me
collect and let me
know when I can
start my road and
location? Thanks,
Dewey

Re: W. A. Moncrief, Jr.
#1 Baldrige Federal "Comm"
2090' FSL and 1490' FEL
Section 14, T24S, R24E
Eddy County, New Mexico

Baldrige Canyon Morrow Pool

Dear Mr. Ramey:

I made application on September 23, 1981 to drill the above-referenced well at an orthodox location 1657' FSL and 2005' FEL section 14. The BLM would not approve that location because of rough topography and because part of the pad fell into a Wilderness Study Area. I met with representatives of the BLM and USGS and with a dirt contractor on October 5th and they drove a stake which they would approve. I had this location surveyed and it is an unorthodox location. I wrote waiver letters to the offset operators on October 8th and forwarded the new surveyor's plats to the USGS on October 9th, 1981.

I have received waiver letters from each offset operator stating that they have no objection to this unorthodox location. Two (2) copies of each letter are attached.

Also attached are two (2) copies of the Surveyor's plat, two (2) copies of an ownership plat of the area and two (2) copies of the topog sheet of the area.

I was notified yesterday by Mr. George Stewart of the U.S.G.S. in Roswell that they have approved this location and that I can start making the road and location as soon as I receive your approval.

I would appreciate your early approval of this location. I have a rig in the area which is currently drilling at 4846' on an 11,200' contract in section 8 of T24S, R25E. I would like to get this location approved in sufficient time to make the road and location before the rig finishes the well in section 8. It will take 15 days to make the road and location.

If you need additional information, please call me at 915/682-1762 or 682-5101.

Very truly yours,

Dewey E. Thornton
Dewey E. Thornton
Exploration Manager

XC: Mr. Bill Gressett - O.C.C.
Mr. Don Janssen - El Paso Exploration
Mr. Richard Brooks - David Fasken

OIL PRODUCER

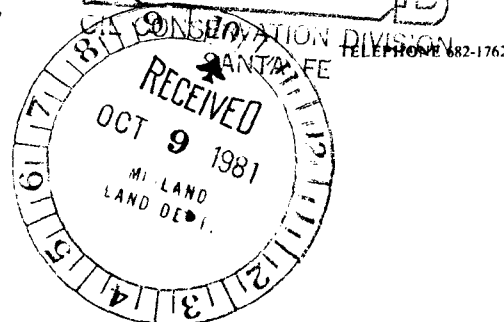
W. A. MONCRIEF, JR.

400 METRO BUILDING
MIDLAND, TEXAS 79701

October 8, 1981

El Paso Exploration Company
1800 Wilco Bldg.
Midland, Texas 79701

Attention: Mr. Don Janssen



Re: W.A. Moncrief, Jr.
#1 Baldrige Federal "Comm"
Unit J, Section 14, T24S, R24E
Eddy County, New Mexico

Dear Mr. Janssen:

W.A. Moncrief, Jr. plans to drill the #1 Baldrige Federal 1490' and 2050' FSL section 14, T24S, R24E and plans to designate the S/2 section 14 as the 320 acre proration unit.

This is an unorthodox location for the S/2 section 14; but rough topography and proximity to a Wilderness Study Area makes an orthodox location impractical.

Representatives of the USGS and BLM have been on the ground with a dirt contractor and feel that this is a more practical location than the orthodox location previously staked.

If you as an offset operator have no objection to the drilling of this unorthodox location; please so signify by signing the waiver below and return it to me.

Very truly yours,

Dewey E. Thornton
Dewey E. Thornton
Exploration Manager

EL PASO EXPLORATION COMPANY as an offset operator does not object to the drilling of the above-referenced unorthodox location.

BY: R. J. Janssen
TITLE: Regional Land Manager
DATE: Oct. 12, 1981

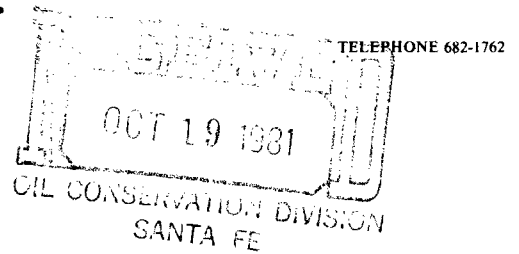
OCT 09 1981

W. A. MONCRIEF, JR.

400 METRO BUILDING
MIDLAND, TEXAS 79701

OIL PRODUCER

October 8, 1981



Yates Petroleum Corporation
207 South 4th St.
Artesia, New Mexico

Attention: Randy Patterson

Re: W.A. Moncrief, Jr.
#1 Baldrige Federal "Comm"
Unit J, Section 14, T24S, R24E
Eddy County, New Mexico

Dear Mr. Patterson:

W.A. Moncrief, Jr. plans to drill the #1 Baldrige Federal 1490' FEL and 2050' FSL section 14, T24S, R24E and plans to designate the S/2 section 14 as the 320 acre proration unit.

This is an unorthodox location for the S/2 section 14; but rough topography and proximity to a Wilderness Study Area makes an orthodox location impractical.

Representatives of the USGS and BLM have been on the ground with a dirt contractor and feel that this is a more practical location than the orthodox location previously staked.

If you as an offset operator have no objection to the drilling of this unorthodox location; please so signify by signing the waiver below and return it to me.

Very truly yours,

Dewey E. Thornton
Dewey E. Thornton
Exploration Manager

YATES PETROLEUM CORPORATION as an offset operator does not object to the drilling of the above-referenced unorthodox location.

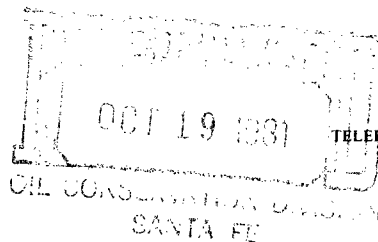
BY: [Signature]
TITLE: Attorney-in-Fact
DATE: October 12, 1981

OIL PRODUCER

W. A. MONCRIEF, JR.

400 METRO BUILDING
MIDLAND, TEXAS 79701

October 8, 1981



David Fasken
1st National Bank Bldg.
Midland, Texas 79701

Attention: Mr. Richard Brooks

Re: W.A. Moncrief, Jr.
#1 Baldrige Federal "Comm"
Unit J, Section 14, T24S, R24E
Eddy County, New Mexico

Dear Mr. Brooks:

W.A. Moncrief, Jr. plans to drill the #1 Baldrige Federal 1490' FEL and 2050' FSL section 14, T24S, R24E and plans to designate the S/2 section 14 as the 320 acre proration unit.

This is an unorthodox location for the S/2 section 14; but rough topography and proximity to a Wilderness Study Area makes an orthodox location impractical.

Representatives of the USGS and BLM have been on the ground with a dirt contractor and feel that this is a more practical location than the orthodox location previously staked.

If you as an offset operator have no objection to the drilling of this unorthodox location; please so signify by signing the waiver below and return it to me.

Very truly yours,

Dewey E. Thornton
Dewey E. Thornton
Exploration Manager

DAVID FASKEN as an offset operator does not object to the drilling of the above-referenced unorthodox location.

DAVID FASKEN

BY: Richard S. Brooks
Richard S. Brooks, Attorney

TITLE: _____

DATE: 10/13/81

NEW MEXICO OIL CONSERVATION COMMISSION
WELL LOCATION AND ACREAGE DEDICATION PLAT

Form C-102
Supersedes C-128
Effective 1-1-65

All distances must be from the outer boundaries of the Section.

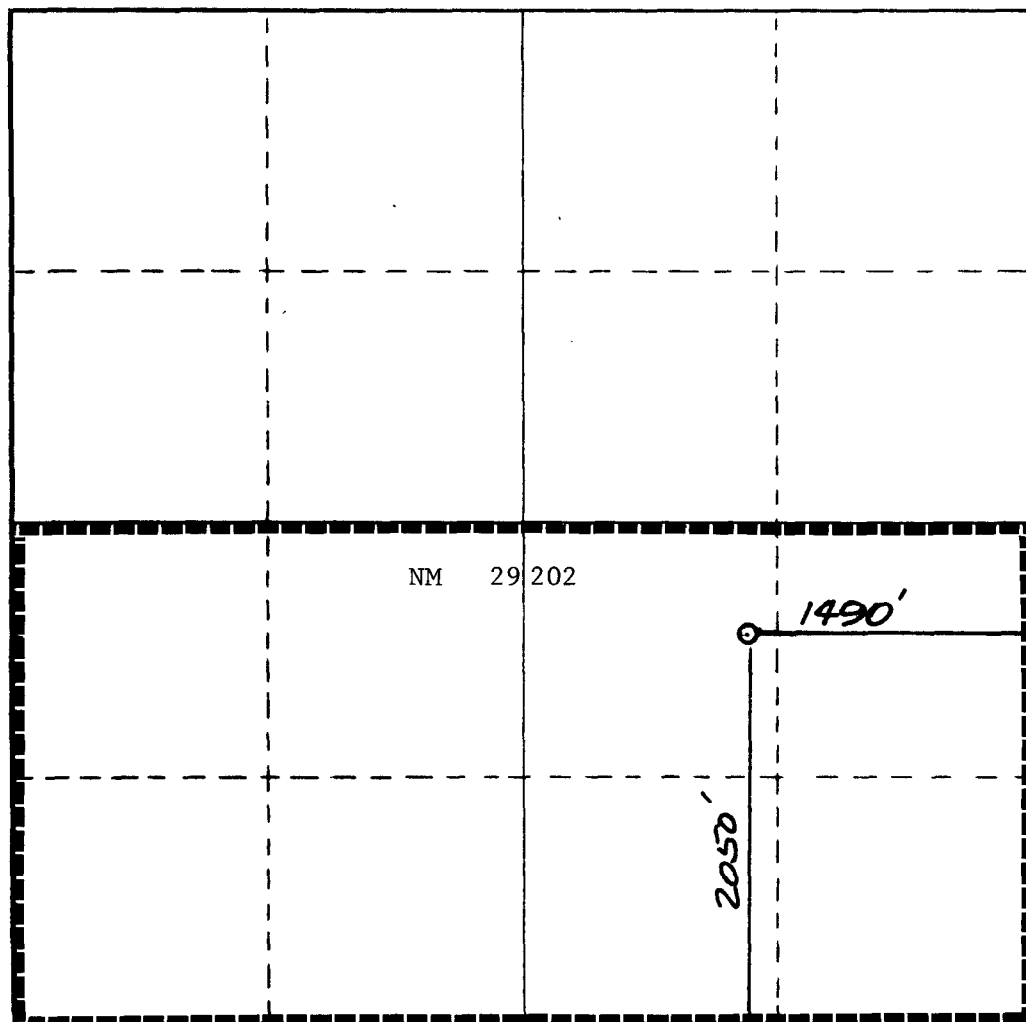
Operator W. A. MONCRIEF, JR.		Lease Baldrige Federal		Well No. 1	
Unit Letter J	Section 14	Township 24 South	Range 24 East	County Eddy	
Actual Footage Location of Well: 2050 feet from the South line and 1490 feet from the East line					
Ground Level Elev: 4518.	Producing Formation Morrow	Pool Baldrige Canyon		Dedicated Acreage: 320 Acres	

1. Outline the acreage dedicated to the subject well by colored pencil or hachure marks on the plat below.
2. If more than one lease is dedicated to the well, outline each and identify the ownership thereof (both as to working interest and royalty).
3. If more than one lease of different ownership is dedicated to the well, have the interests of all owners been consolidated by communitization, unitization, force-pooling, etc?

☐ Yes ☐ No If answer is "yes," type of consolidation _____

If answer is "no," list the owners and tract descriptions which have actually been consolidated. (Use reverse side of this form if necessary.) _____

No allowable will be assigned to the well until all interests have been consolidated (by communitization, unitization, forced-pooling, or otherwise) or until a non-standard unit, eliminating such interests, has been approved by the Commission.



CERTIFICATION

I hereby certify that the information contained herein is true and complete to the best of my knowledge and belief.

Dewey E. Thornton
Name

Dewey E. Thornton

Position

Exploration Manager

Company

W.A. Moncrief, Jr.

Date

October 9, 1981

I hereby certify that the well location shown on this plat was plotted from field notes of actual surveys made by me or under my supervision, and that the same is true and correct to the best of my knowledge and belief.

Date Surveyed

October 7, 1981

Registered Professional Engineer and/or Land Surveyor

Dan R. Reddy

Certificate No.

NM PE&LS #5412

<p>21</p> <p>U.S.</p> <p>22</p> <p>U.S.</p> <p>23</p> <p>U.S.</p> <p>24</p> <p>U.S.</p> <p>25</p> <p>U.S.</p> <p>26</p> <p>U.S.</p> <p>27</p> <p>U.S.</p> <p>28</p> <p>U.S.</p> <p>29</p> <p>U.S.</p> <p>30</p> <p>U.S.</p> <p>31</p> <p>U.S.</p> <p>32</p> <p>U.S.</p> <p>33</p> <p>U.S.</p> <p>34</p> <p>U.S.</p> <p>35</p> <p>U.S.</p> <p>36</p> <p>U.S.</p> <p>37</p> <p>U.S.</p> <p>38</p> <p>U.S.</p> <p>39</p> <p>U.S.</p> <p>40</p> <p>U.S.</p> <p>41</p> <p>U.S.</p> <p>42</p> <p>U.S.</p> <p>43</p> <p>U.S.</p> <p>44</p> <p>U.S.</p> <p>45</p> <p>U.S.</p> <p>46</p> <p>U.S.</p> <p>47</p> <p>U.S.</p> <p>48</p> <p>U.S.</p> <p>49</p> <p>U.S.</p> <p>50</p> <p>U.S.</p> <p>51</p> <p>U.S.</p> <p>52</p> <p>U.S.</p> <p>53</p> <p>U.S.</p> <p>54</p> <p>U.S.</p> <p>55</p> <p>U.S.</p> <p>56</p> <p>U.S.</p> <p>57</p> <p>U.S.</p> <p>58</p> <p>U.S.</p> <p>59</p> <p>U.S.</p> <p>60</p> <p>U.S.</p> <p>61</p> <p>U.S.</p> <p>62</p> <p>U.S.</p> <p>63</p> <p>U.S.</p> <p>64</p> <p>U.S.</p> <p>65</p> <p>U.S.</p> <p>66</p> <p>U.S.</p> <p>67</p> <p>U.S.</p> <p>68</p> <p>U.S.</p> <p>69</p> <p>U.S.</p> <p>70</p> <p>U.S.</p> <p>71</p> <p>U.S.</p> <p>72</p> <p>U.S.</p> <p>73</p> <p>U.S.</p> <p>74</p> <p>U.S.</p> <p>75</p> <p>U.S.</p> <p>76</p> <p>U.S.</p> <p>77</p> <p>U.S.</p> <p>78</p> <p>U.S.</p> <p>79</p> <p>U.S.</p> <p>80</p> <p>U.S.</p> <p>81</p> <p>U.S.</p> <p>82</p> <p>U.S.</p> <p>83</p> <p>U.S.</p> <p>84</p> <p>U.S.</p> <p>85</p> <p>U.S.</p> <p>86</p> <p>U.S.</p> <p>87</p> <p>U.S.</p> <p>88</p> <p>U.S.</p> <p>89</p> <p>U.S.</p> <p>90</p> <p>U.S.</p> <p>91</p> <p>U.S.</p> <p>92</p> <p>U.S.</p> <p>93</p> <p>U.S.</p> <p>94</p> <p>U.S.</p> <p>95</p> <p>U.S.</p> <p>96</p> <p>U.S.</p> <p>97</p> <p>U.S.</p> <p>98</p> <p>U.S.</p> <p>99</p> <p>U.S.</p> <p>100</p> <p>U.S.</p>	<p>1</p> <p>U.S.</p> <p>2</p> <p>U.S.</p> <p>3</p> <p>U.S.</p> <p>4</p> <p>U.S.</p> <p>5</p> <p>U.S.</p> <p>6</p> <p>U.S.</p> <p>7</p> <p>U.S.</p> <p>8</p> <p>U.S.</p> <p>9</p> <p>U.S.</p> <p>10</p> <p>U.S.</p> <p>11</p> <p>U.S.</p> <p>12</p> <p>U.S.</p> <p>13</p> <p>U.S.</p> <p>14</p> <p>U.S.</p> <p>15</p> <p>U.S.</p> <p>16</p> <p>U.S.</p> <p>17</p> <p>U.S.</p> <p>18</p> <p>U.S.</p> <p>19</p> <p>U.S.</p> <p>20</p> <p>U.S.</p> <p>21</p> <p>U.S.</p> <p>22</p> <p>U.S.</p> <p>23</p> <p>U.S.</p> <p>24</p> <p>U.S.</p> <p>25</p> <p>U.S.</p> <p>26</p> <p>U.S.</p> <p>27</p> <p>U.S.</p> <p>28</p> <p>U.S.</p> <p>29</p> <p>U.S.</p> <p>30</p> <p>U.S.</p> <p>31</p> <p>U.S.</p> <p>32</p> <p>U.S.</p> <p>33</p> <p>U.S.</p> <p>34</p> <p>U.S.</p> <p>35</p> <p>U.S.</p> <p>36</p> <p>U.S.</p> <p>37</p> <p>U.S.</p> <p>38</p> <p>U.S.</p> <p>39</p> <p>U.S.</p> <p>40</p> <p>U.S.</p> <p>41</p> <p>U.S.</p> <p>42</p> <p>U.S.</p> <p>43</p> <p>U.S.</p> <p>44</p> <p>U.S.</p> <p>45</p> <p>U.S.</p> <p>46</p> <p>U.S.</p> <p>47</p> <p>U.S.</p> <p>48</p> <p>U.S.</p> <p>49</p> <p>U.S.</p> <p>50</p> <p>U.S.</p> <p>51</p> <p>U.S.</p> <p>52</p> <p>U.S.</p> <p>53</p> <p>U.S.</p> <p>54</p> <p>U.S.</p> <p>55</p> <p>U.S.</p> <p>56</p> <p>U.S.</p> <p>57</p> <p>U.S.</p> <p>58</p> <p>U.S.</p> <p>59</p> <p>U.S.</p> <p>60</p> <p>U.S.</p> <p>61</p> <p>U.S.</p> <p>62</p> <p>U.S.</p> <p>63</p> <p>U.S.</p> <p>64</p> <p>U.S.</p> <p>65</p> <p>U.S.</p> <p>66</p> <p>U.S.</p> <p>67</p> <p>U.S.</p> <p>68</p> <p>U.S.</p> <p>69</p> <p>U.S.</p> <p>70</p> <p>U.S.</p> <p>71</p> <p>U.S.</p> <p>72</p> <p>U.S.</p> <p>73</p> <p>U.S.</p> <p>74</p> <p>U.S.</p> <p>75</p> <p>U.S.</p> <p>76</p> <p>U.S.</p> <p>77</p> <p>U.S.</p> <p>78</p> <p>U.S.</p> <p>79</p> <p>U.S.</p> <p>80</p> <p>U.S.</p> <p>81</p> <p>U.S.</p> <p>82</p> <p>U.S.</p> <p>83</p> <p>U.S.</p> <p>84</p> <p>U.S.</p> <p>85</p> <p>U.S.</p> <p>86</p> <p>U.S.</p> <p>87</p> <p>U.S.</p> <p>88</p> <p>U.S.</p> <p>89</p> <p>U.S.</p> <p>90</p> <p>U.S.</p> <p>91</p> <p>U.S.</p> <p>92</p> <p>U.S.</p> <p>93</p> <p>U.S.</p> <p>94</p> <p>U.S.</p> <p>95</p> <p>U.S.</p> <p>96</p> <p>U.S.</p> <p>97</p> <p>U.S.</p> <p>98</p> <p>U.S.</p> <p>99</p> <p>U.S.</p> <p>100</p> <p>U.S.</p>	<p>1</p> <p>U.S.</p> <p>2</p> <p>U.S.</p> <p>3</p> <p>U.S.</p> <p>4</p> <p>U.S.</p> <p>5</p> <p>U.S.</p> <p>6</p> <p>U.S.</p> <p>7</p> <p>U.S.</p> <p>8</p> <p>U.S.</p> <p>9</p> <p>U.S.</p> <p>10</p> <p>U.S.</p> <p>11</p> <p>U.S.</p> <p>12</p> <p>U.S.</p> <p>13</p> <p>U.S.</p> <p>14</p> <p>U.S.</p> <p>15</p> <p>U.S.</p> <p>16</p> <p>U.S.</p> <p>17</p> <p>U.S.</p> <p>18</p> <p>U.S.</p> <p>19</p> <p>U.S.</p> <p>20</p> <p>U.S.</p> <p>21</p> <p>U.S.</p> <p>22</p> <p>U.S.</p> <p>23</p> <p>U.S.</p> <p>24</p> <p>U.S.</p> <p>25</p> <p>U.S.</p> <p>26</p> <p>U.S.</p> <p>27</p> <p>U.S.</p> <p>28</p> <p>U.S.</p> <p>29</p> <p>U.S.</p> <p>30</p> <p>U.S.</p> <p>31</p> <p>U.S.</p> <p>32</p> <p>U.S.</p> <p>33</p> <p>U.S.</p> <p>34</p> <p>U.S.</p> <p>35</p> <p>U.S.</p> <p>36</p> <p>U.S.</p> <p>37</p> <p>U.S.</p> <p>38</p> <p>U.S.</p> <p>39</p> <p>U.S.</p> <p>40</p> <p>U.S.</p> <p>41</p> <p>U.S.</p> <p>42</p> <p>U.S.</p> <p>43</p> <p>U.S.</p> <p>44</p> <p>U.S.</p> <p>45</p> <p>U.S.</p> <p>46</p> <p>U.S.</p> <p>47</p> <p>U.S.</p> <p>48</p> <p>U.S.</p> <p>49</p> <p>U.S.</p> <p>50</p> <p>U.S.</p> <p>51</p> <p>U.S.</p> <p>52</p> <p>U.S.</p> <p>53</p> <p>U.S.</p> <p>54</p> <p>U.S.</p> <p>55</p> <p>U.S.</p> <p>56</p> <p>U.S.</p> <p>57</p> <p>U.S.</p> <p>58</p> <p>U.S.</p> <p>59</p> <p>U.S.</p> <p>60</p> <p>U.S.</p> <p>61</p> <p>U.S.</p> <p>62</p> <p>U.S.</p> <p>63</p> <p>U.S.</p> <p>64</p> <p>U.S.</p> <p>65</p> <p>U.S.</p> <p>66</p> <p>U.S.</p> <p>67</p> <p>U.S.</p> <p>68</p> <p>U.S.</p> <p>69</p> <p>U.S.</p> <p>70</p> <p>U.S.</p> <p>71</p> <p>U.S.</p> <p>72</p> <p>U.S.</p> <p>73</p> <p>U.S.</p> <p>74</p> <p>U.S.</p> <p>75</p> <p>U.S.</p> <p>76</p>
--	---	--

