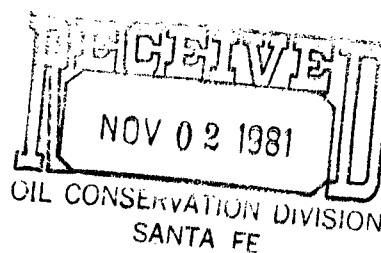




McClellan Oil Corporation



October 26, 1981

Mr. Joe Ramey
O.C.D.
P.O. Box 2088
Santa Fe, NM 87501

1450
NSL - ~~11111~~
Rule 104 F
Waivers in no waiting

Re: MCC McCrea Fee No. 1
Section 1-T10S-R25E
330' FNL & 2310' FWL
Chaves County, N.M.

Dear Mr. Ramey:

Enclosed for your further handling is a letter from Husky Oil Company, one of our offset partners, agreeing to the above captioned unorthodox location.

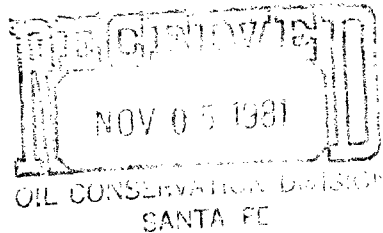
Since we have already provided you with a similar letter of agreement from Yates Petroleum Corporation, our other offset partner, we are hopeful to obtain the approval of the Oil Conservation Division for the unorthodox location. Your attention to this matter at your earliest convenience will be appreciated.

Very truly yours,

Mark McClellan
Geologist

MMC:ms
Enclosure

Mark McClellan called today - 11/3. They are moving a rig in approval based on the verbal penciled in on the plat. Told them we would give written approval upon receipt of ownership map showing Yates & Husky as the only offset operators.



Amoco Production Company (USA)

500 Jefferson Building
P.O. Box 3092
Houston, Texas 77001

October 30, 1981

File: JCA-986.511NM-0208

Re: Unorthodox Well Location
Scharb "9" Well No. 1
D, 660' FNL & 660' FWL
Sec. 9, T-19-S, R-35-E
Lea County, New Mexico

State of New Mexico
Energy & Mineral Department
Oil Conservation Division
P.O. Box 2088
Santa Fe, New Mexico 87501

Gentlemen:

Southland Royalty Company has filed a request for administrative approval for an unorthodox well location for the Scharb "9" Well No. 1 completed in the Bone Spring Formation.

As an offset operator, Amoco Production Company has no objection to this unorthodox well location as stated above.

Yours very truly,

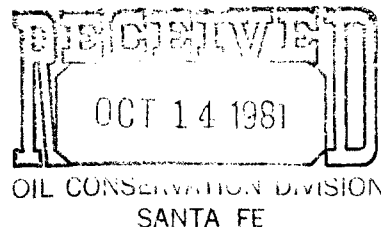
R. G. Smith
Regional Engineering Manager - West

MLC/lp
617/I

cc: Southland Royalty Company
1100 Wall Towers West
Midland, TX 79701



McClellan Oil Corporation



October 7, 1981

Yates Petroleum Corporation
207 South 4th Street
Artesia, New Mexico 88201

Re: MOC McCrea Fee No. 1
Section 1-T10S-R25E
330' FNL & 2310' FWL
Chaves County, N. M.

Attention: Randy Patterson

Gentlemen:

Pursuant to our telephone conversation this date, this letter is to request that you indicate your agreement to the captioned unorthodox location. Inasmuch as you are the only offset operator to this test, your waiver will expedite our request.

Please indicate your approval by signing in the space provided below and returning three copies of this letter to our office for submission to the Oil Conservation Division.

Very truly yours,

Mark McClellan

Mark McClellan
Geologist

We have no objection to this location, and will be participating in the drilling of this test.

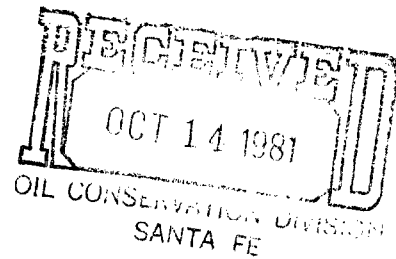
YATES PETROLEUM CORPORATION

BY: 

We are basically opposed to 330' from a side locations, however we are not objecting to this location since you are moving toward yourself. We would rather that the pattern of 330' locations not be established in the area.

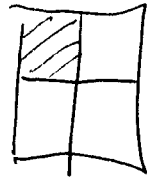


McClellan Oil Corporation



October 12, 1981

Mr. Joe Ramey
O.C.D.
P.O. Box 2088
Santa Fe, NM 87501



Re: MOC McCrea Fee No. 1
Section 1-T10S-R25E
330' FNL & 2310' FWL
Chaves County, N.M.

7160

Dear Mr. Ramey:

Pursuant to our conversation on Thursday, October 8, concerning the captioned unorthodox location, I am enclosing a letter from our offset partner stating that they have no objection to the present staked location. This location was staked 330' FNL instead of 660' FNL due to the topography problem.

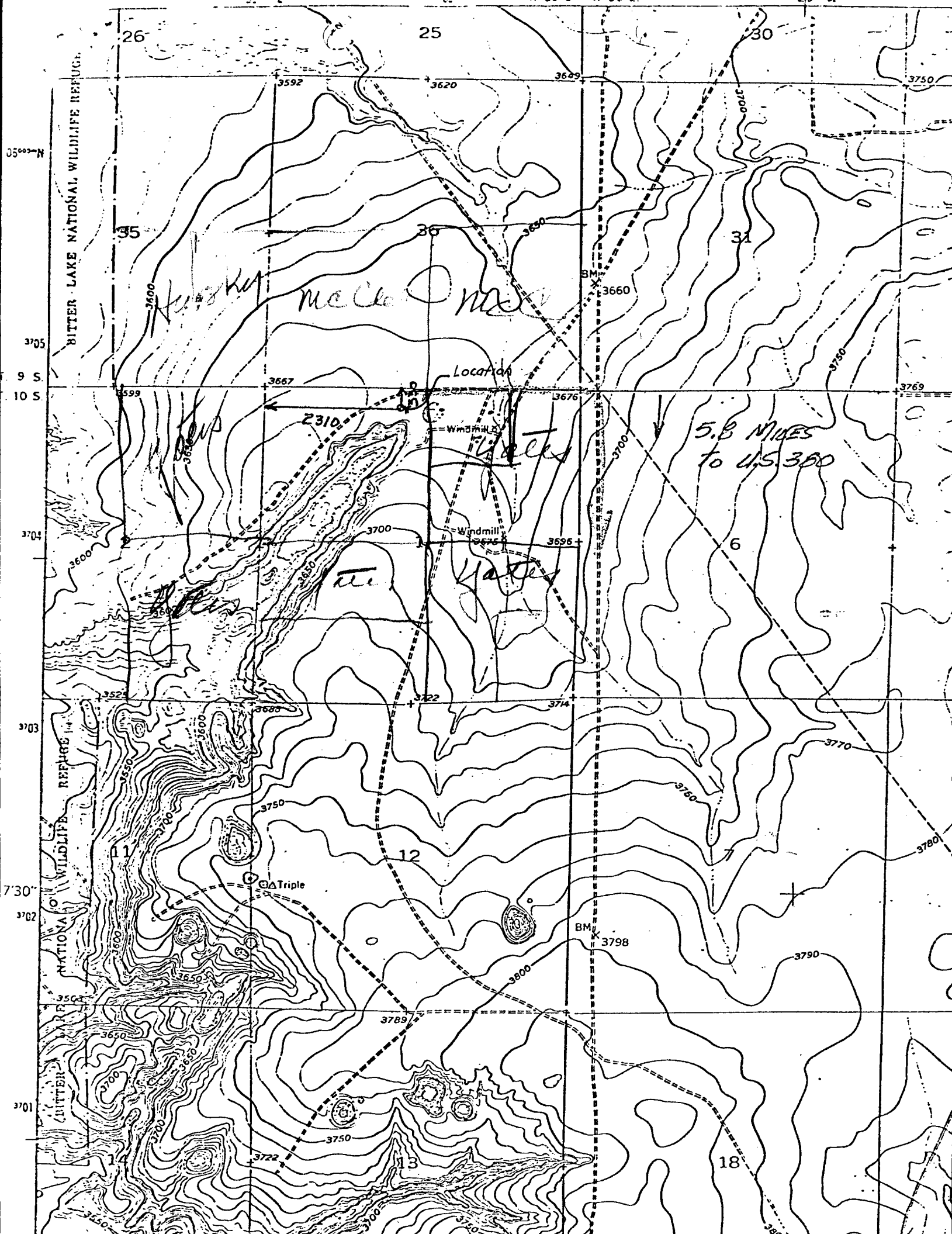
We are requesting that you expedite administrative approval for the captioned unorthodox location, as we are holding a drilling rig with this well.

Very truly yours,

Mark McClellan

Mark McClellan
Geologist

MMc/ms
Enclosure
cc: W.A. Gressett w/attachment



BITTER LAKE NATIONAL WILDLIFE REFUGE

26

25

30

35

36

31

3705

9 S.

10 S.

3704

3703

3730"

3702

3701

BITTER LAKE NATIONAL WILDLIFE REFUGE

Location

Windmill

Windmill

5.8 MILES
to U.S. 360

2310

Triple

BM 3798

11

12

13

18