

9/8/03 ~~2/27/03~~ WVS  
NA  
District I  
1625 N. French Drive, Hobbs, NM 68240  
District II  
811 South First Street, Artesia, NM 88210  
District III  
1000 Rio Brazos Road, Aztec, NM 87410  
District IV  
2040 South Pacheco, Santa Fe, NM 87505

State of New Mexico  
Energy, Minerals, and Natural Resources Department

OIL CONSERVATION DIVISION  
2040 South Pacheco  
Santa Fe, New Mexico 87505

APPLICATION FOR DOWNHOLE COMMINGLING

RECEIVED  
Form C-107A  
Revised May 15, 2000  
SEP 5 2003  
APPLICATION TYPE  
Single Well  
X Established Pre-Approved Pools  
Oil Conservation Division  
EXISTING WELLBORE  
Yes X No

CONOCOPHILLIPS CO. P.O. BOX 2197 WL3 4061 HOUSTON TX 77252  
Operator Address  
SAN JUAN 28-7 UNIT 61B M 10 28N 7W RIO ARRIBA  
Lease Well No. Unit Letter-Section-Township-Range County  
OGRID No. 217817 Property Code 31739 API No. 30-039-27250 Lease Type X Federal State Fee

DATA ELEMENT	UPPER ZONE	INTERMEDIATE ZONE	LOWER ZONE
Pool Name	Basin Fruitland Coal	Blanco PC South	Blanco Mesaverde
Pool Code	71629	72439	72319
Top and Bottom of Pay Section (Perforated or Open-Hole Interval)	3069' - 3319'	3319' - 3569'	4949' - 5794'
Method of Production (Flowing or Artificial Lift)	expected to flow	expected to flow	expected to flow
Bottomhole Pressure (Note: Pressure data will not be required if the bottom perforation in the lower zone is within 150% of the depth of the top perforation in the upper zone)	470	380	575
Oil Gravity or Gas BTU (Degree API or Gas BTU)	1170	1210	1250
Producing, Shut-in or New Zone	new zone	new zone	new zone
Date and Oil/Gas/Water Rates of Last Production (Note: For new zones with no production history, applicant shall be required to attach production estimates and supporting data.)	Date:  Rates: see attached	Date:  Rates: see attached	Date:  Rates: see attached
Fixed Allocation Percentage (Note: If allocation is based upon something other than current or part production, supporting data or explanation will be required.)	Oil Gas test % tes %	Oil Gas test % test %	Oil Gas test % tes %

ADDITIONAL DATA

Are all working, royalty and overriding royalty interests identical in all commingling zones? Yes No X  
If not, have all working royalty and overriding royalty interest owners been notified by certified mail? Yes No X  
Are all produced fluids from all commingling zones compatible with each other? Yes X No  
Will commingling decrease the value of production? Yes No X  
If this well is on, or communitized with, state or federal lands, has either the Commissioner of Public Lands or the United States Bureau of Land Management been notified in writing of this application? Yes X No

NMOCD Reference Case No. applicable to this well: R-10476B, R-11363

Attachments:  
C-102 for each zone to be commingled showing its spacing unit and acreage dedication.  
Production curve for each zone for at least one year. (If not available, attach explanation.)  
For zones with no production history, estimated production rates and supporting data.  
Data to support allocation method or formula.  
Notification list of working, royalty and overriding royalty interests for uncommon interest cases.  
Any additional statements, data or documents required to support commingling:

Pre-Approved Pools

If application is to establish Pre-Approved Pools, the following additional information will be required:

List of other orders approving downhole commingling within the proposed Pre-Approved Pools  
List of all operators within the proposed Pre-Approved Pools  
Proof that all operators within the proposed Pre-Approved Pools were provided notice of this application.  
Bottomhole pressure data.

I hereby certify that the information above is true and complete to the best of my knowledge and belief.

SIGNATURE Deborah Marberry TITLE REGULATORY ANALYST DATE 07/22/2003

TYPE OR PRINT NAME DEBORAH MARBERRY TELEPHONE NO. (832)486-2326

**District I**  
1625 N. French Dr., Hobbs, NM 88240  
**District II**  
811 South First, Artesia, NM 88210  
**District III**  
1000 Rio Brazos Rd., Aztec, NM 87410  
**District IV**  
2040 South Pacheco, Santa Fe, NM 87505

State of New Mexico  
Energy, Minerals & Natural Resources Department

Form C-102  
Revised August 15, 2000

OIL CONSERVATION DIVISION  
2040 South Pacheco  
Santa Fe, NM 87505

Submit to Appropriate District Office  
State Lease - 4 Copies  
Fee Lease - 3 Copies

☐ AMENDED REPORT

WELL LOCATION AND ACREAGE DEDICATION PLAT

<sup>1</sup> API Number 30-039-27250		<sup>2</sup> Pool Code 72319		<sup>3</sup> Pool Name BLANCO MESAVERDE	
<sup>4</sup> Property Code 31739		<sup>5</sup> Property Name SAN JUAN 28-7			<sup>6</sup> Well Number 61B
<sup>7</sup> GRID No. 217817		<sup>8</sup> Operator Name CONOCOPHILLIPS CO.			<sup>9</sup> Elevation 6606 GL

<sup>10</sup> Surface Location

UL or lot no.	Section	Township	Range	Lot Idn	Feet from the	North/South line	Feet from the	East/West line	County
M	10	28N	7W		1070	SOUTH	450	WEST	RIO ARriba

<sup>11</sup> Bottom Hole Location If Different From Surface

UL or lot no.	Section	Township	Range	Lot Idn	Feet from the	North/South line	Feet from the	East/West line	County

<sup>12</sup> Dedicated Acres 296.08 N/2	<sup>13</sup> Joint or Infill	<sup>14</sup> Consolidation Code	<sup>15</sup> Order No.
---	-------------------------------	----------------------------------	-------------------------

NO ALLOWABLE WILL BE ASSIGNED TO THIS COMPLETION UNTIL ALL INTERESTS HAVE BEEN CONSOLIDATED OR A  
NON-STANDARD UNIT HAS BEEN APPROVED BY THE DIVISION

<sup>16</sup> 				<sup>17</sup> OPERATOR CERTIFICATION I hereby certify that the information contained herein is true and complete to the best of my knowledge and belief.  Signature DEBORAH MARBERRY Printed Name REGULATORY ANALYST Title 07/22/2003 Date
				<sup>18</sup> SURVEYOR CERTIFICATION I hereby certify that the well location shown on this plat was plotted from field notes of actual surveys made by me or under my supervision, and that the same is true and correct to the best of my belief. Date of Survey Signature and Seal of Professional Surveyor:  Certificate Number

District I  
1625 N. French Dr., Hobbs, NM 88240  
District II  
811 South First, Artesia, NM 88210  
District III  
1000 Rio Brazos Rd., Aztec, NM 87410  
District IV  
2040 South Pacheco, Santa Fe, NM 87505

State of New Mexico  
Energy, Minerals & Natural Resources Department

Form C-102  
Revised August 15, 2000

OIL CONSERVATION DIVISION  
2040 South Pacheco  
Santa Fe, NM 87505

Submit to Appropriate District Office  
State Lease - 4 Copies  
Fee Lease - 3 Copies

☐ AMENDED REPORT

WELL LOCATION AND ACREAGE DEDICATION PLAT

<sup>1</sup> API Number 30-039-27250		<sup>2</sup> Pool Code 72439		<sup>3</sup> Pool Name SOUTH BLANCO PICTURED CLIFFS	
<sup>4</sup> Property Code 31739		<sup>5</sup> Property Name SAN JUAN 28-7			<sup>6</sup> Well Number 61B
<sup>7</sup> OGRID No. 217817		<sup>8</sup> Operator Name CONOCOPHILLIPS CO.			<sup>9</sup> Elevation 6606 GL

<sup>10</sup> Surface Location

UL or lot no.	Section	Township	Range	Lot Idn	Feet from the	North/South line	Feet from the	East/West line	County
M	10	28N	7W		1070	SOUTH	450	WEST	RIO ARRIBA

<sup>11</sup> Bottom Hole Location If Different From Surface

UL or lot no.	Section	Township	Range	Lot Idn	Feet from the	North/South line	Feet from the	East/West line	County

<sup>12</sup> Dedicated Acres 148.36	<sup>13</sup> Joint or Infill	<sup>14</sup> Consolidation Code	<sup>15</sup> Order No.
---	-------------------------------	----------------------------------	-------------------------

NO ALLOWABLE WILL BE ASSIGNED TO THIS COMPLETION UNTIL ALL INTERESTS HAVE BEEN CONSOLIDATED OR A NON-STANDARD UNIT HAS BEEN APPROVED BY THE DIVISION

<sup>16</sup> 	<sup>17</sup> OPERATOR CERTIFICATION I hereby certify that the information contained herein is true and complete to the best of my knowledge and belief.  Signature DEBORAH MARBERRY Printed Name REGULATORY ANALYST Title 07/22/2003 Date			
	<sup>18</sup> SURVEYOR CERTIFICATION I hereby certify that the well location shown on this plat was plotted from field notes of actual surveys made by me or under my supervision, and that the same is true and correct to the best of my belief.			
	Date of Survey Signature and Seal of Professional Surveyor:			
	Certificate Number			

District IV  
2040 South Pacheco, Santa Fe, NM 87505

Submit to Appropriate District Office  
State Lease - 4 Copies  
Fee Lease - 3 Copies

<sup>1</sup> API Number	<sup>2</sup> Pool Code	<sup>3</sup> Pool Name
30-039-27250	71629	BASIN FRUITLAND COAL
<sup>4</sup> Property Code	<sup>5</sup> Property Name	<sup>6</sup> Well Number
31739	SAN JUAN 28-7	61B
<sup>7</sup> OGRID No.	<sup>8</sup> Operator Name	<sup>9</sup> Elevation
217817	CONOCOPHILLIPS CO.	6606 GL

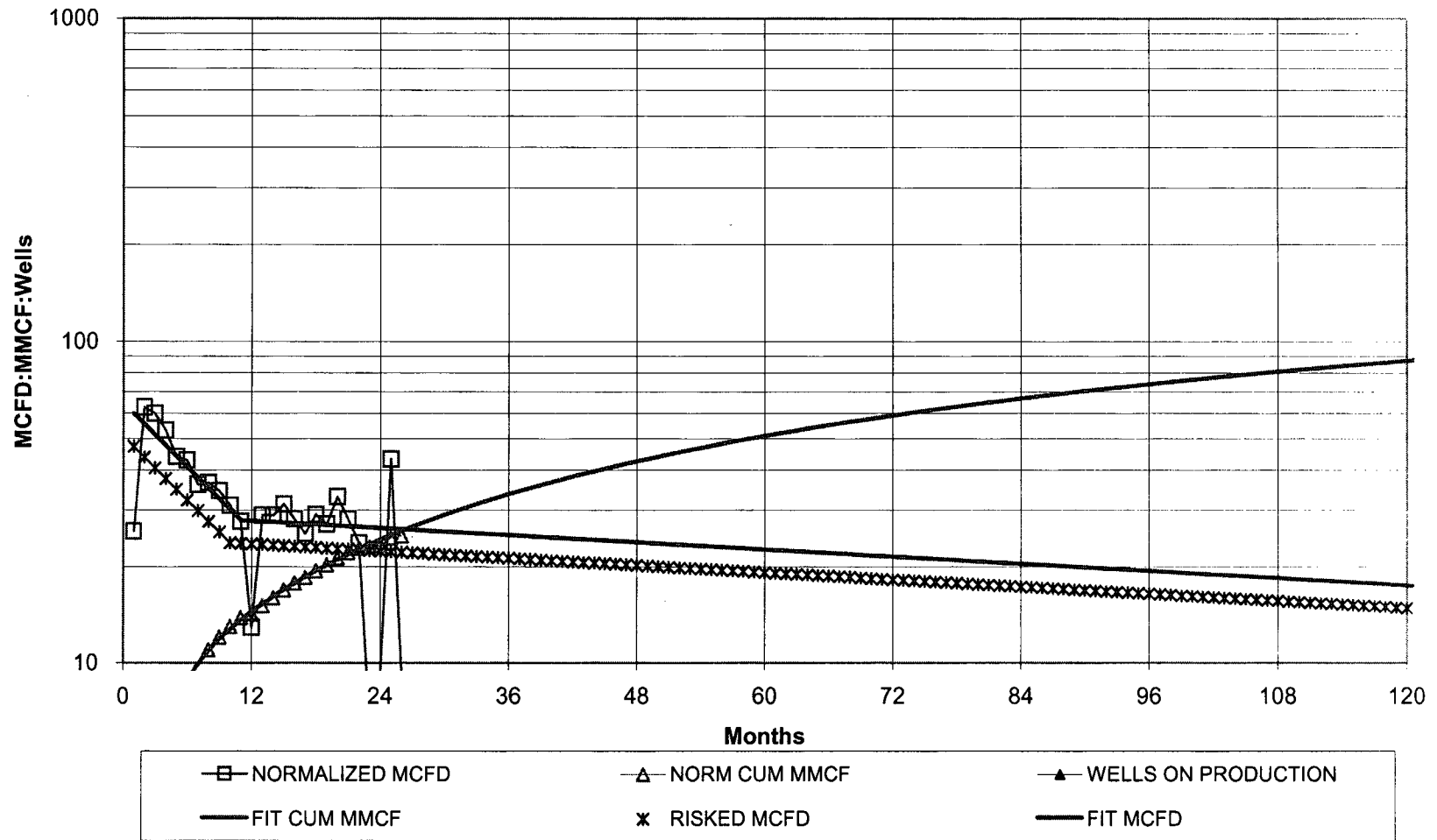
UL or lot no.	Section	Township	Range	Lot Idn	Feet from the	North/South line	Feet from the	East/West line	County
M	10	28N	7W		1070	SOUTH	450	WEST	RIO ARRIBA

UL or lot no.	Section	Township	Range	Lot Idn	Feet from the	North/South line	Feet from the	East/West line	County
---------------	---------	----------	-------	---------	---------------	------------------	---------------	----------------	--------

<sup>12</sup> Dedicated Acres	<sup>13</sup> Joint or Infill	<sup>14</sup> Consolidation Code	<sup>15</sup> Order No.
296.08 N/2			

<div>16</div> <div>450'</div> <div>1070'</div>				<div>17 OPERATOR CERTIFICATION</div> <div>I hereby certify that the information contained herein is true and complete to the best of my knowledge and belief.</div> <div><div>Signature</div><div>DEBORAH MARBERRY</div><div>Printed Name</div><div>REGULATORY ANALYST</div><div>Title</div><div>07/22/2003</div><div>Date</div></div>
				<div>18 SURVEYOR CERTIFICATION</div> <div>I hereby certify that the well location shown on this plat was plotted from field notes of actual surveys made by me or under my supervision, and that the same is true and correct to the best of my belief.</div> <div><div>Date of Survey</div><div>Signature and Seal of Professional Surveyor:</div><div>Certificate Number</div></div>

# **LOW RATE FRUITLAND COAL PRODUCTION** **6 WELLS LOCATED IN 28-7 AND 27-7**



## **NORMALIZED AVG:**

141 MMCF EUR  
 138 MMCF IN 20 YRS  
 185 MMCF IN 40 YRS  
 10 MCFD E.L.  
 0.0000 bbl/mcf oil yield

60 MCFD IP  
 60.0% DECLINE, 1ST 10 MONTHS  
 5.0% FINAL DECLINE

## **RISKED AVG:**

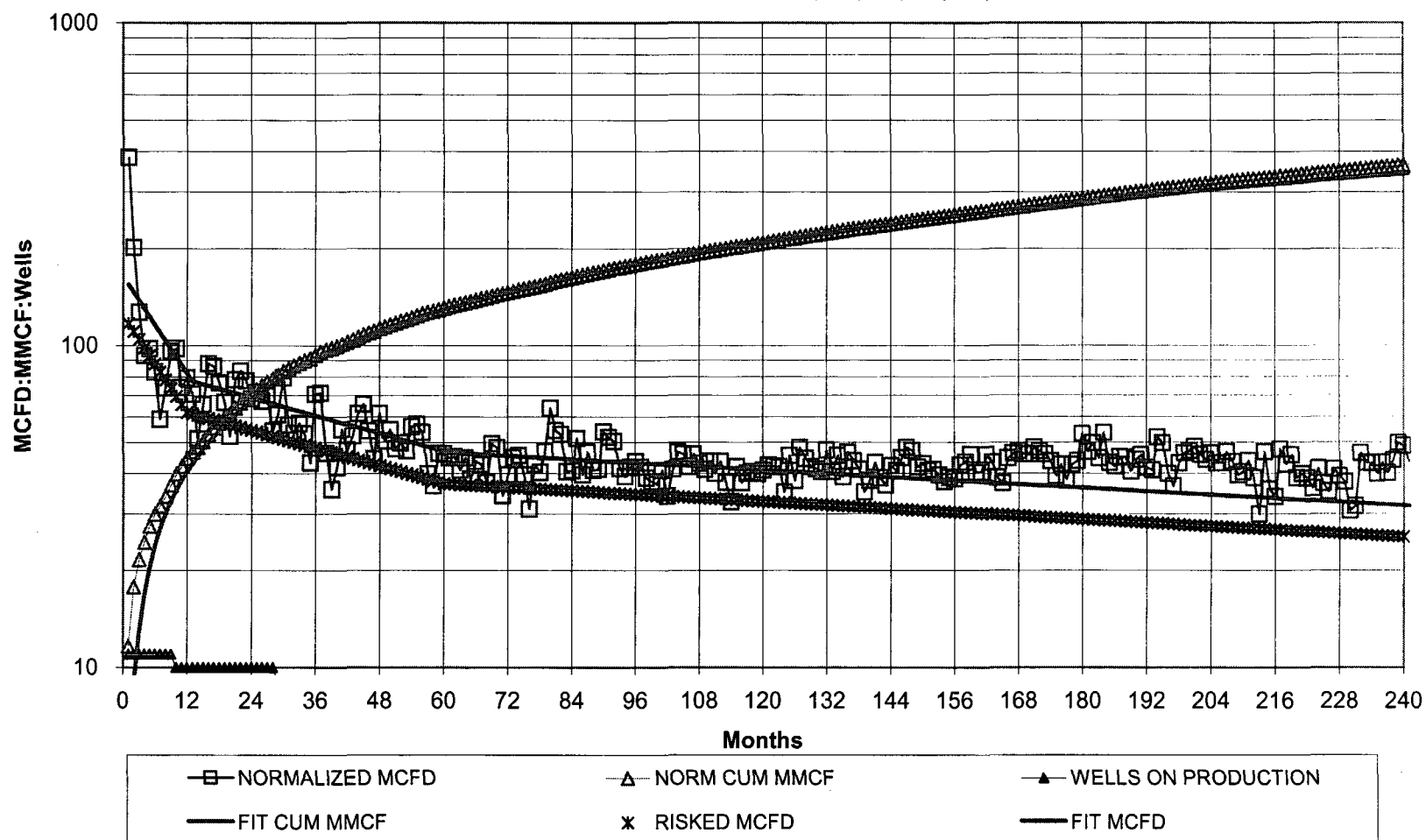
**15% RISK**

109 MMCF EUR  
 117 MMCF IN 20 YRS  
 10 MCFD E.L.  
 0.0000 bbl/mcf oil yield

51 MCFD IP  
 60.0% DECLINE, 1ST 10 MONTHS  
 5.0% FINAL DECLINE

28-7 wells 7, 10, 68, 146, 161. 27-7 well 35.

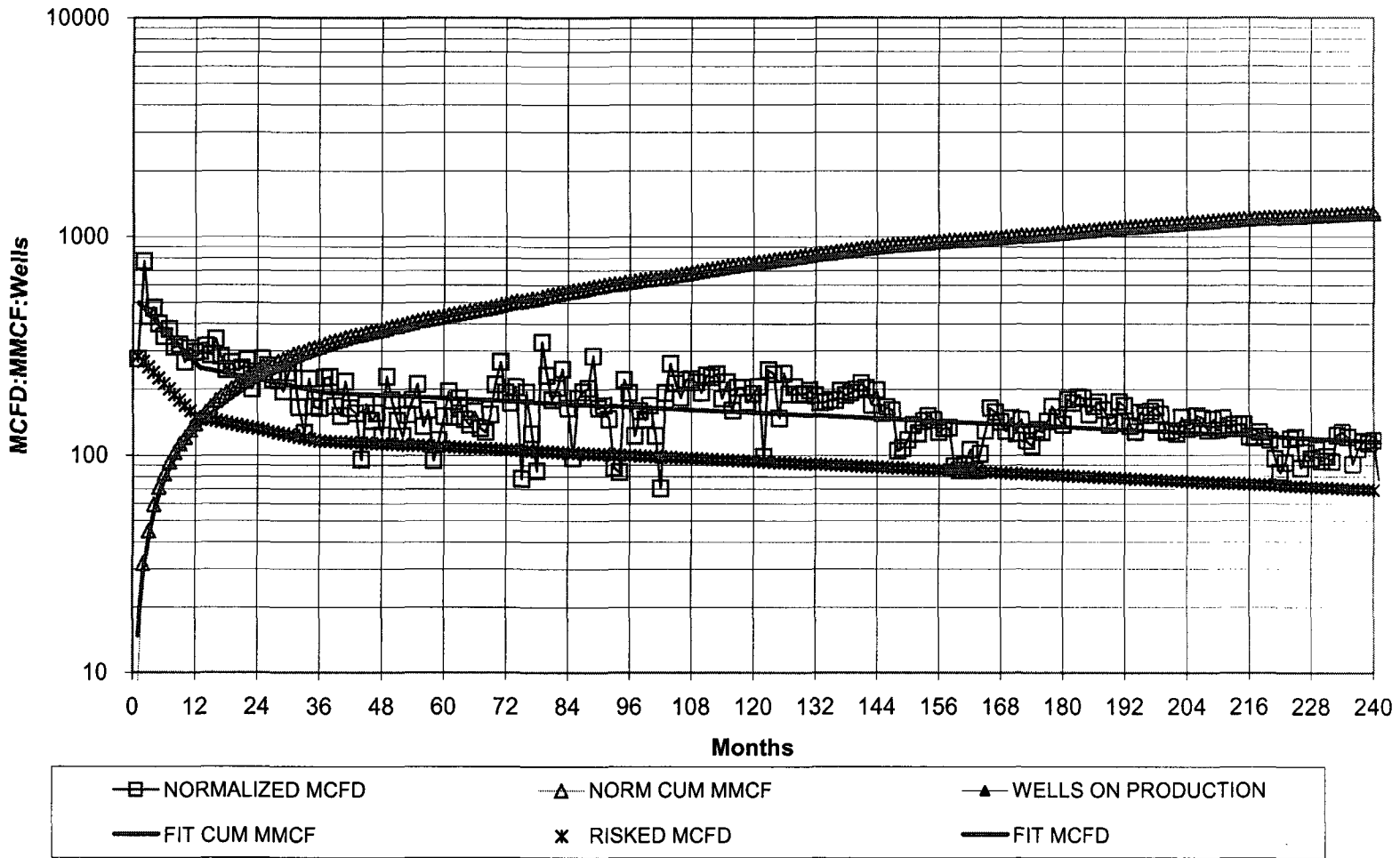
# **NORMALIZED PICTURED CLIFFS PRODUCTION WELLS LOCATED IN 28-7 SECTIONS 15, 22, 27, 33, 34, 35 AND 36**



NORMALIZED AVG:		RISKED AVG:		20% RISK	
655 MMCF EUR	155 MCFD IP	495 MMCF EUR	124 MCFD IP		
342 MMCF IN 20 YRS	50.0% DECLINE, 1ST 12 MONTHS	419 MMCF IN 40 YRS	50.0% DECLINE, 1ST 12 MONTHS		
523 MMCF IN 40 YRS	12.0% DECLINE, NEXT 48 MONTHS	10 MCFD E.L.	12.0% DECLINE, NEXT 48 MONTHS		
10 MCFD E.L.	2.5% FINAL DECLINE	0.0000 bbl/mcf oil yield	2.5% FINAL DECLINE		
0.0000 bbl/mcf oil yield					

Wells 28-7 1, 7, 10, 52, 71, 72, 75, 76, 91, 114, 267.

# **NORMALIZED MESAVERDE PRODUCTION** **80 ACRE MESAVERDE WELLS (PARENT & DAUGHTER) IN 28-7 SECTIONS 7, 9, 16**



## **NORMALIZED AVG:**

2433 MMCF EUR	500 MCFD IP
1234 MMCF IN 20 YRS	50.0% DECLINE, 1ST 12 MONTHS
1861 MMCF IN 40 YRS	12.0% DECLINE, NEXT 24 MONTHS
15 MCFD E.L.	3.0% FINAL DECLINE
0.0068 bbl/mcf oil yield	

## **RISKED AVG:**

**40% RISK**

1388 MMCF EUR	300 MCFD IP
1117 MMCF IN 40 YRS	50.0% DECLINE, 1ST 12 MONTHS
15 MCFD E.L.	12.0% DECLINE, NEXT 24 MONTHS
0.0068 bbl/mcf oil yield	3.0% FINAL DECLINE

28-7 wells 6, 21, 29, 29A, 195M, 231E, 241, 242M, 246

60% EUR: 1117 MMCF    60% IP: 300 MCF/D    40 yrs production.