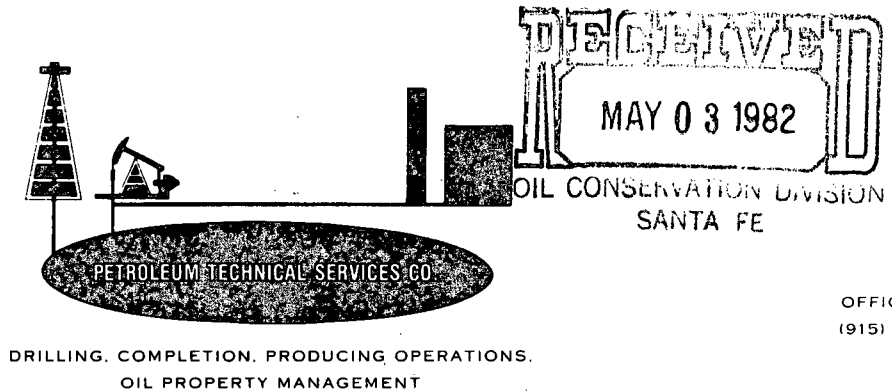


3000 N. GARFIELD, SUITE 210
MIDLAND, TEXAS 79701



OFFICE PHONE
(915) 684-6603

April 28, 1982

*plate showing
conditions & notify*

New Mexico Oil Conservation Commission
P. O. Box 2088
Santa Fe, New Mexico 87501

RE: Non-Standard Location Approval
Alta Energy Corporation
Walker No. 1
Section 21, T-8-N, R-21-E
Guadalupe County, New Mexico

Gentlemen:

Alta Energy Corporation respectfully requests your approval to drill the subject well as a non-standard location located 2080' FNL and 660' FEL of Section 21. This location was moved 100' south due to terrain difficulties prohibiting the building of a suitable drilling site at a standard location of 1980' FNL and 660' FEL, (ie) C/SE $\frac{1}{4}$ /NE $\frac{1}{4}$ of Section 21. As we are currently preparing to move the rig on location your earliest attention to this matter is requested. Copies of the Application for Permit to Drill and the location plats are enclosed.

Yours very truly,

Don C. Bennett

Don C. Bennett, Agent
for Alta Energy Corporation

DCB/le

cc: Alta Energy Corporation
212 HBF Building
Midland, Texas 79701

*4-3-82 - inform him of info need
4-4-82 - Return call - info by
Fed Xpress tomorrow*

NEW MEXICO OIL CONSERVATION COMMISSION
WELL LOCATION AND ACREAGE DEDICATION PLAT

Form C-102
Supersedes C-128
Effective 1-1-65

All distances must be from the outer boundaries of the Section.

RECEIVED MAY 06 1982
SANTA FE DIVISION

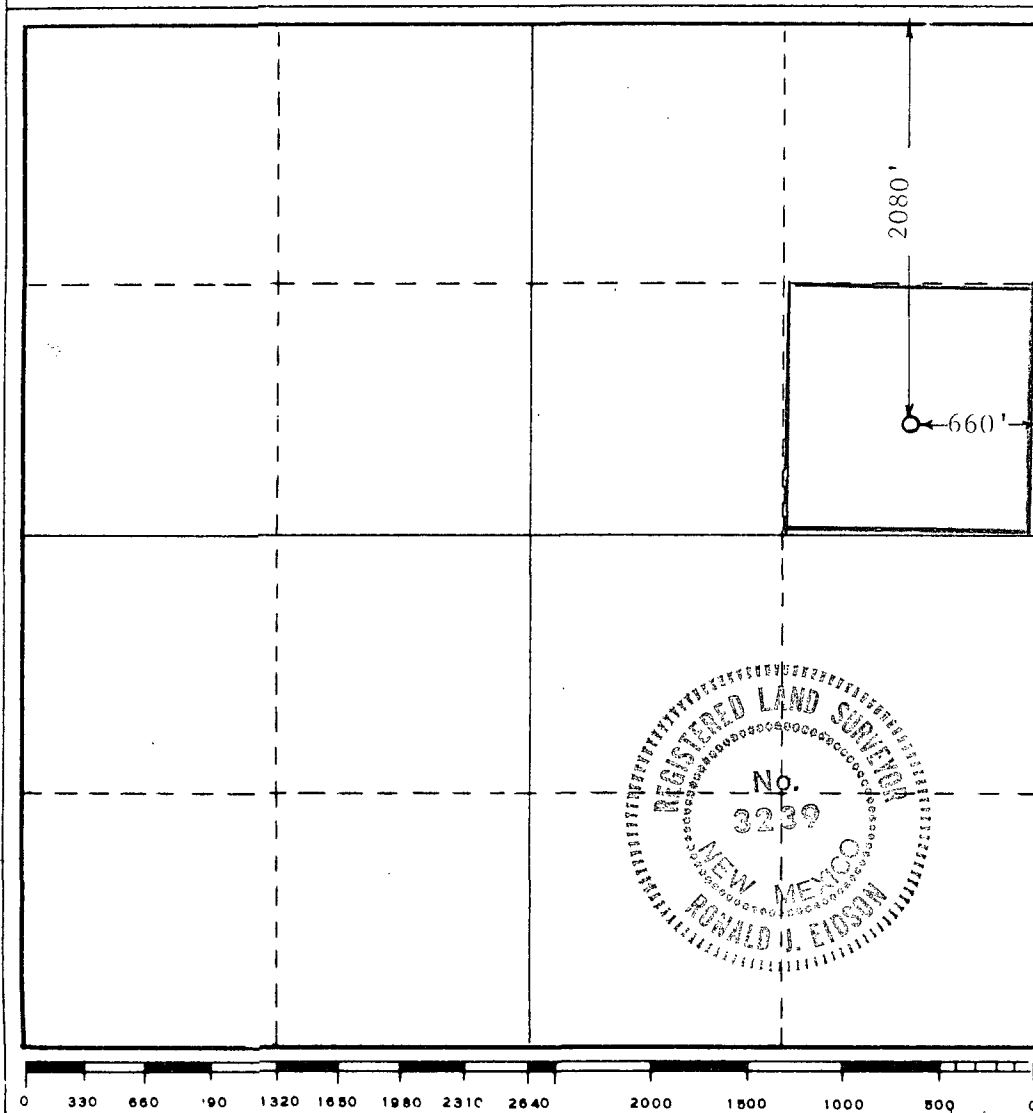
| | | | | | |
|---|---------------------|---------------------|------------------|-----------------------------|---------------|
| Operator Alta Energy Corp. | | | Lease Walker | | Well No. 1 |
| Unit Letter H | Section 21 | Township 8 North | Range 21 East | County Guadalupe | |
| Actual Footage Location of Well: 660 feet from the East line and 2080 feet from the North line | | | | | |
| Ground Level Elev. 4672.5 | Producing Formation | | Pool | Dedicated Acreage: Acres | |

1. Outline the acreage dedicated to the subject well by colored pencil or hachure marks on the plat below.
2. If more than one lease is dedicated to the well, outline each and identify the ownership thereof (both as to working interest and royalty).
3. If more than one lease of different ownership is dedicated to the well, have the interests of all owners been consolidated by communitization, unitization, force-pooling, etc?

☐ Yes ☐ No If answer is "yes," type of consolidation _____

If answer is "no," list the owners and tract descriptions which have actually been consolidated. (Use reverse side of this form if necessary.) _____

No allowable will be assigned to the well until all interests have been consolidated (by communitization, unitization, forced-pooling, or otherwise) or until a non-standard unit, eliminating such interests, has been approved by the Commission.



CERTIFICATION

I hereby certify that the information contained herein is true and complete to the best of my knowledge and belief.

Don C. Bennett
Name

Agent
Position

Alta Energy Corporation
Company

4-27-82
Date

I hereby certify that the well location shown on this plat was plotted from field notes of actual surveys made by me or under my supervision, and that the same is true and correct to the best of my knowledge and belief.

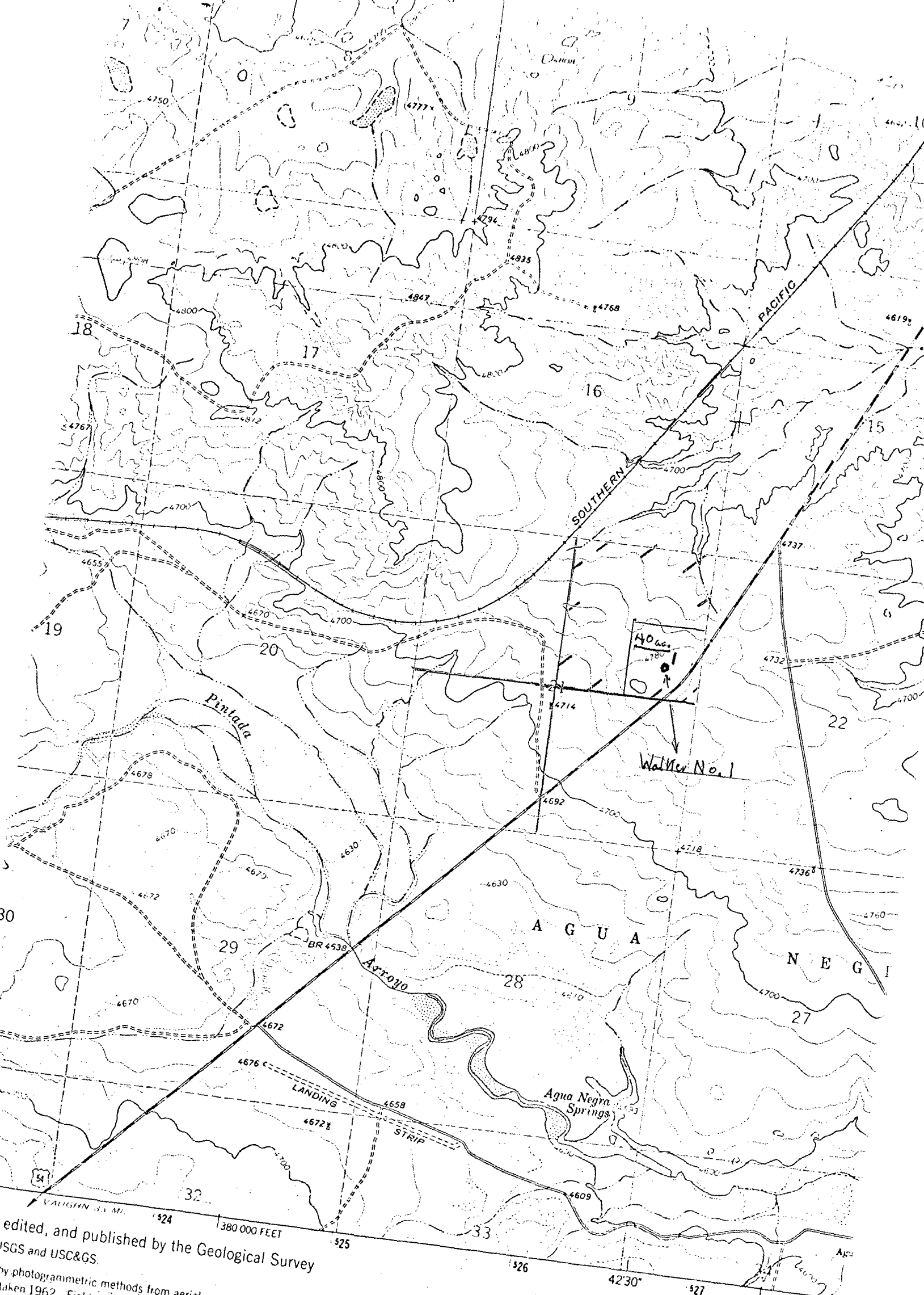
Date Surveyed

April 15, 1982

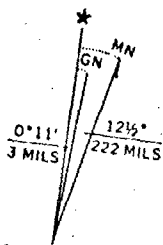
Registered Professional Engineer
and/or Land Surveyor

Ronald J. Eidson

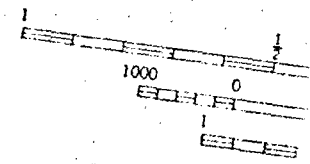
Certificate No. JOHN W. WEST 876
PATRICK A. ROMERO 6863
Ronald J. Eidson 3239



edited, and published by the Geological Survey
 USGS and USC&GS.
 by photogrammetric methods from aerial
 taken 1962. Field checked 1963
 section. 1927 North American datum
 grid based on New Mexico coordinate system, east zone
 Universal Transverse Mercator grid ticks,
 in blue
 lines indicate selected fence lines



UTM GRID AND 1963 MAGNETIC NORTH
 DECLINATION AT CENTER OF SHEET

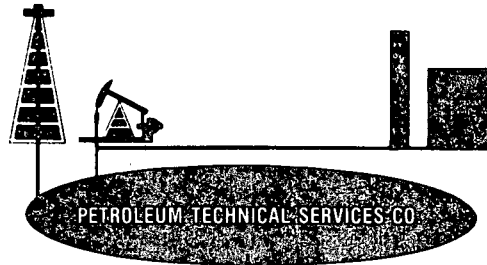


FOR SALE BY U.S. GEOLOGICAL
 A FOLDER

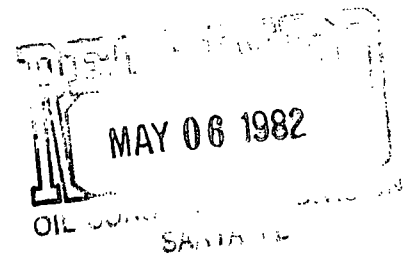
| | | | | | |
|------------------|------------------|------------------|------------------------------------|------------------|------------------|
| Clayton Williams | Alta 17 | State 16 | | Clayton Williams | Alta 15 |
| | | Alta | Clayton Williams | | |
| Alta | Clayton Williams | | | Alta | Clayton Williams |
| Clayton Williams | Alta 20 | Clayton Williams | Alta 21 40 acres Walker No 1 | Clayton Williams | Alta 22 |
| Alta | Clayton Williams | Alta | Clayton Williams | Alta | Clayton Williams |
| Clayton Williams | Alta 29 | Clayton Williams | Alta 28 | Clayton Williams | Alta 27 |
| Alta | Clayton Williams | Alta | Clayton Williams | Alta | Clayton Williams |

T-8-N
 R-21-E
 Guadalupe County
 New Mexico

3000 N. GARFIELD, SUITE 210
MIDLAND, TEXAS 79701



DRILLING, COMPLETION, PRODUCING OPERATIONS,
OIL PROPERTY MANAGEMENT



OFFICE PHONE
(915) 684-6603

May 4, 1982

Clayton W. Williams, Jr.
#200 Blanks Bldg.
Midland, Texas 79701

RE: Non-Standard Location Approval
Alta Energy Corporation
Walker No. 1
Section 21, T-8-N, R-21-E
Guadalupe County, New Mexico

NSL - 1525-
@ Rule 104 F
waiver IN
Immediate

Gentlemen:

Alta Energy Corporation respectfully requests your waiver of objection to drill the subject well as a non-standard location, located 2080' FNL and 660' FEL of Section 21. It was necessary to move the location 100' south due to terrain difficulties prohibiting the building of a suitable drilling site at a standard location of 1980' FNL and 660' FEL, ie: C/SE $\frac{1}{4}$ /NE $\frac{1}{4}$ of Section 21.

Attached for your information is a copy of our drilling application and non-standard approval request to the State of New Mexico. Also, attached is a copy of our well location and acreage dedication plat and topographic map.

If you waiver objection to this request, please indicate by signing one (1) copy of this letter and mailing it to the Oil Conservation Commission to the attention of Roy Johnson in the enclosed envelope.

Your earliest attention to this matter is requested since we are presently preparing to move rig on location.

Very truly yours,

Don C. Bennett

Don C. Bennett, Agent
for Alta Energy Corporation

Approved: *Richard L. Lanning* for Clayton W. Williams, Jr.
Date: 5-5-82

DCB/le

cc: Bob Bailey
212 HBF Building
Midland, Texas 79701

| | | |
|-----------------|--|--|
| COPIES RECEIVED | | |
| DISTRIBUTION | | |
| SALE PRICE | | |
| FILE | | |
| U.S.G.S. | | |
| LAND OFFICE | | |
| OPERATOR | | |

NEW MEXICO OIL CONSERVATION COMMISSION

MAY 06 1982
OIL CONSERVATION
SANTA FE

Form C-101
Revised 1-1-65

5A. Indicate Type of Lease
STATE ☐ FEE ☒

5. State Oil & Gas Lease No.

APPLICATION FOR PERMIT TO DRILL, DEEPEN, OR PLUG BACK

| | | |
|---|---|--|
| a. Type of Work DRILL <input checked="" type="checkbox"/> DEEPEN <input type="checkbox"/> PLUG BACK <input type="checkbox"/> | | 7. Unit Agreement Name |
| b. Type of Well OIL WELL <input type="checkbox"/> GAS WELL <input checked="" type="checkbox"/> OTHER <input type="checkbox"/> SINGLE ZONE <input type="checkbox"/> MULTIPLE ZONE <input checked="" type="checkbox"/> | | 8. Farm or Lease Name Walker |
| c. Name of Operator Alta Energy Corporation | | 9. Well No. 1 |
| d. Address of Operator 3000 N. Garfield, Suite 210 Midland, Texas 79701 | | 10. Field and Pool, or Wildcat Wildcat |
| e. Location of Well UNIT LETTER H LOCATED 2080 FEET FROM THE North LINE 660 FEET FROM THE East LINE OF SEC. 21 TWP. 8-N RGE. 21-E NMPM | | 12. County Guadalupe |
| 19. Proposed Depth 4000' | | 19A. Formation Pennsylvanian |
| 20. Rotary or C.T. Rotary | | |
| 1. Elevations (Show whether DF, RT, etc.) 4672.5' GL | 21A. Kind & Status Plug Bond Blanket Bond-Multiple | 21B. Drilling Contractor Tom Brown Drllg. Company |
| 22. Approx. Date Work will start 5-9-82 | | |

PROPOSED CASING AND CEMENT PROGRAM

| SIZE OF HOLE | SIZE OF CASING | WEIGHT PER FOOT | SETTING DEPTH | SACKS OF CEMENT | EST. TOP |
|--------------|----------------|-----------------|---------------|-----------------|----------|
| 12-1/4" | 8-5/8" | 24# | 420' | 400 | circ. |
| 7-7/8" | 4-1/2" | 10.5# | 4000' | 625 | 1500' |

1. -Move in and rig up rotary tools. Drill 12-1/4" hole with spud mud to 420'
2. Run and set 420' of 8-5/8", 24#/ft., ERW, K-55, 8rd. STC casing and cement with 400 sacks of cement +2% CaCl2 + 1/4# flocele 1 sack WOC-12 Hrs.
3. Install 3000 psi WP blowout preventer, test casing to 1000 psi, drill out cement
4. Drill 7-7/8" hole with water and mud (8.4 - 9.0 PPG) to 4000'. Run open hole logs
5. Run 4-1/2", 10.5#/ft., seamless, K-55, 8rd. STC casing to total depth and cement with 625 sacks Class "C" 50-50 pozmix "A" + 2% Gel, 6# salt/sk., and 1/4# flocel/sk. WOC - 24 Hrs.
6. Run cement bond log and proceed with completion

*Under separate cover the Blanket Bond is being mailed 4-29-82 by Johnny Johnson Insurance Company

ABOVE SPACE DESCRIBE PROPOSED PROGRAM: IF PROPOSAL IS TO DEEPEN OR PLUG BACK, GIVE DATA ON PRESENT PRODUCTIVE ZONE AND PROPOSED NEW PRODUCTION ZONE. GIVE BLOWOUT PREVENTER PROGRAM, IF ANY.

I hereby certify that the information above is true and complete to the best of my knowledge and belief.

Signed Don E. Bennett Title Agent Date 4-27-82

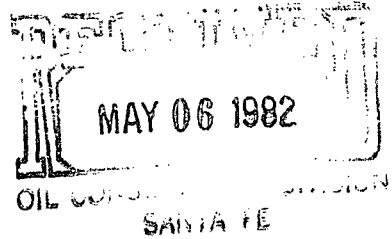
(This space for State Use)

APPROVED BY _____ TITLE _____ DATE _____

CONDITIONS OF APPROVAL, IF ANY:

Alta Energy Corporation

212 HBF Building
Midland, Texas 79701



New Mexico Oil Conservation Commission
P. O. Box 2088
Santa Fe, New Mexico 87501

RE: Alta Energy Corporation
Guadalupe County, New Mexico

Gentlemen:

We have designated Petroleum Technical Services Company as Agent to represent us in the operation of all of our producing properties in the Guadalupe County area. We hereby request that all correspondence, forms, proration reports and requests of any nature concerning the reporting and operation of our oil and gas properties be directed to our Agent at 3000 N. Garfield, Suite 210, Midland, Texas 79701.

We appreciate your help and attention to this matter.

Very truly yours,

R. F. Bailey
Alta Energy Corporation
Bob Bailey, President