

April 18, 1983

Mr. R. L. Stamets
Energy and Minerals Department
New Mexico Oil Conservation Division
P.O. Box 2088
Santa Fe, New Mexico 87501

Dear Mr. Stamets:

Subject: Unorthodox location in the
West Pecos Slope ABO Gas Pool for
Mesa Petroleum Co.
China Federal #15
1444' FSL & 1950' FWL
Sec 19, T7S, R23E

Application is hereby made for administrative approval of an unorthodox location for subject well due to geology and topography.

Exhibit I is the Form C102 showing mineral lease holder for the proposed proration unit, Exhibit II is a topographic plat showing the area in question, Exhibit III is a statement by the area Geologist supporting the subject location and Exhibit IV is a land plat showing that MTS Limited Partnership (Mesa Petroleum Co., general partner and operator) is the holder of offset leases.

Expeditious handling of this request is greatly appreciated.

Yours truly,

R. E. Mathis
Regulatory Coordinator
Onshore Operations Division

ch

attachments

XC: NMOCDA, BLM-R, CEN RCDS, OPS(FILE), MIDLAND, ROSWELL, PARTNERS

All distances must be from the outer boundaries of the Section.

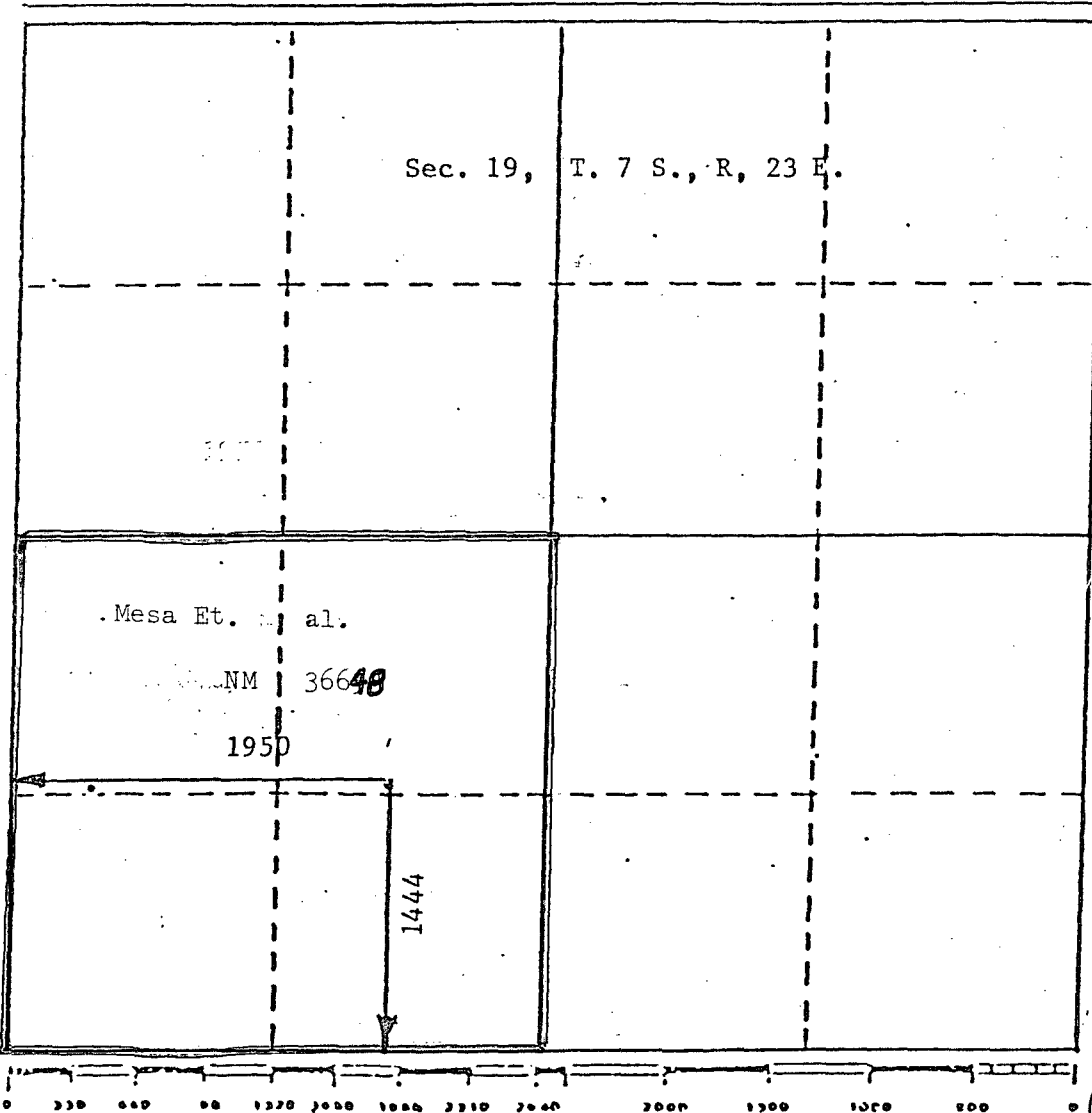
Operator Mesa Petroleum Co.,		Lease China Federal		APR 21 1983		Well No. 15
Unit Letter K	Section 19	Township 7 South	Range 23 East	County Chaves		
Actual Postage Location of Well: 1444 South 1950 West				OIL CONSERVATION DIVISION SANTA FE		
Ground Level Elev. 3958	Producing Formation ABO	Pool West Pecos Slope ABO	Dedicated Acreage: SW $\frac{1}{4}$ 160 Acres			

1. Outline the acreage dedicated to the subject well by colored pencil or hachure marks on the plat below.
2. If more than one lease is dedicated to the well, outline each and identify the ownership thereof (both as to working interest and royalty).
3. If more than one lease of different ownership is dedicated to the well, have the interests of all owners been consolidated by communitization, unitization, force-pooling, etc?

☐ Yes ☐ No If answer is "yes," type of consolidation _____

If answer is "no," list the owners and tract descriptions which have actually been consolidated. (Use reverse side of this form if necessary.) _____

No allowable will be assigned to the well until all interests have been consolidated (by communitization, unitization, forced-pooling, or otherwise) or until a non-standard unit, eliminating such interests, has been approved by the Division.



CERTIFICATION

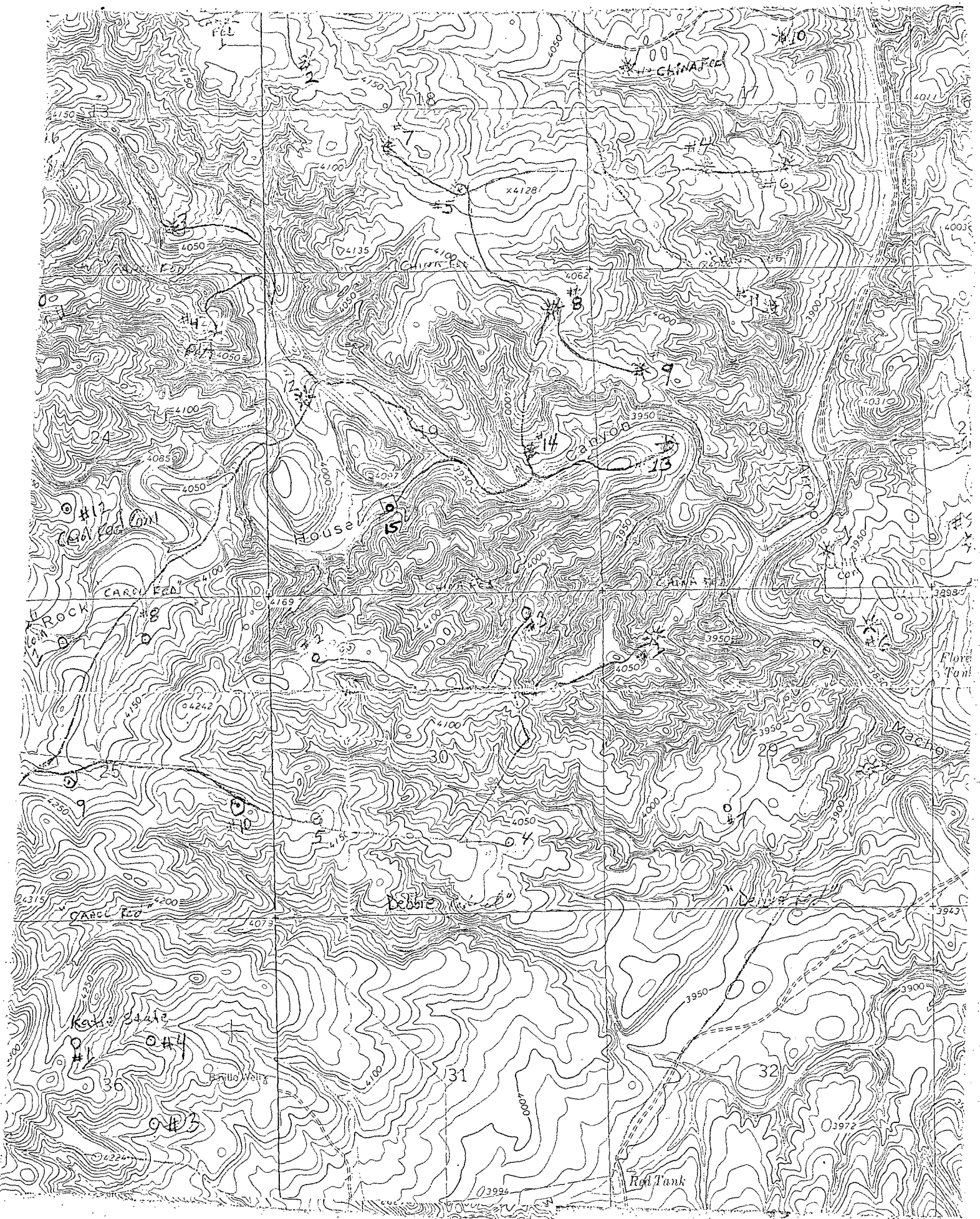
I hereby certify that the information contained herein is true and complete to the best of my knowledge and belief.

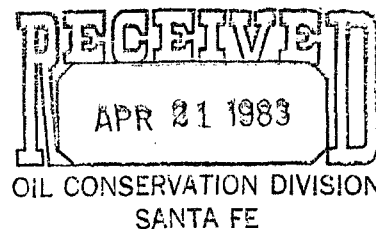
Lloyd Reed

Name
Lloyd Reed
Position
Regulatory Agent
Company
Mesa Petroleum Company
Date
April 14, 1983

I hereby certify that the well location shown on this plat was plotted from field notes of actual surveys made by me or under my supervision, and that the same is true and correct to the best of my knowledge and belief.

JOHN D. JAQUESS
NEW MEXICO
443-83
15290
Registered Professional Engineer
and Surveyor
John D. Jaquess, P.E. & L.S.
Certificate No. 6290





GEOLOGIC CONDITIONS REQUIRING UNORTHODOX LOCATION

Mesa China Fed #15
SW/4 Section 19, T7S, R23E
Chaves County, New Mexico

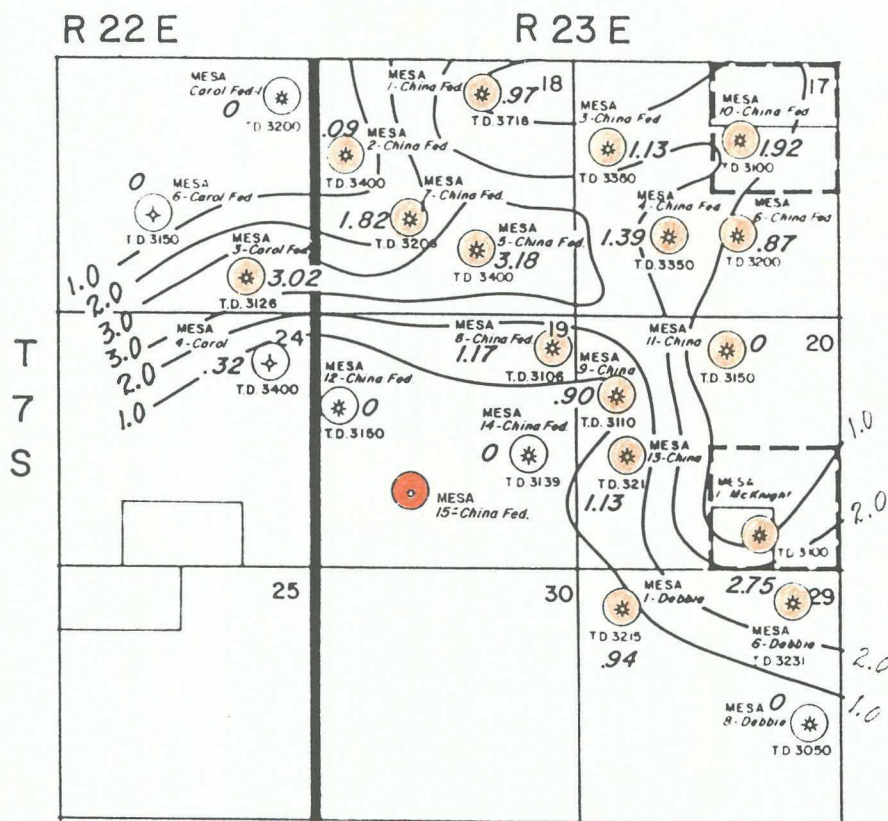
The only area within the 160 acre unit (comprising the southwest quarter of Section 19, T7S, R23E, Chaves County, New Mexico) where Mesa believes that an economic well could be drilled is in the northeast quarter of the southwest quarter. Within the NE/4 of the SW/4 Section 19, the only topographically feasible location is 1444 feet from the south line and 1950 feet from the west line of Section 19.

Furthermore, the only legal location within the 160 acre unit that is topographically feasible (990 feet from the south line and 990 feet from the west line of Section 19) is projected by Mesa to not be underlain by economically producible Abo sandstones.

This geologic interpretation is shown on the attached porosity-feet isopachs ($((\text{porosity-feet} = (\text{feet sandstone} \times \text{porosity}) \div 100))$). Wells that penetrated Abo sandstones having thickness/porosity characteristics similar to those interpreted for the southwest quarter of the southwest quarter of Section 19 have not had economic quantities of gas: for example, Mesa Carol Fed #6, SW/4 Section 13, T7S, R22E and Mesa Carol Fed #4, NE/4 Section 24, T7S, R22E. Both wells were plugged and abandoned. The Mesa Debbie Fed #1, NW/4 Section 29, T7S, R23E, had a calculated absolute open flow of only 600 MCFPD. The well is shut in and not expected to payout its drilling and completion costs.

Edith Campbell

Edith Campbell
Exploitation Geologist
Mesa Petroleum Co.



PRODUCTION LEGEND :

○ Abo 'A'



MESA
PETROLEUM CO.



ONSHORE OPERATIONS DIVISION

PECOS SLOPE PROSPECT

Chaves County, New Mexico

Abo 'A' Zone

ISOPACH

Porosity - Feet

BY E. CAMPBELL
DATE 4-1-83

DRAWN BY B. HUBBARD
SCALE 1" = 4000'

my
9-
T. (12/2/1911)

<p>U.S.</p> <p>1</p> <p>Exxon Corp.</p> <p>12-1-11</p> <p>2</p> <p>1501.41</p>	<p>State</p> <p>1</p> <p>MTS 1/2</p> <p>Public Lds. Expl.</p> <p>9-1-89</p> <p>36651</p> <p>0080</p> <p>1</p> <p>130.89</p> <p>401.2</p> <p>U.S.</p> <p>0118</p> <p>Public Lds. Expl. V2</p> <p>9-1-89</p> <p>E.M. Haley</p> <p>52/160</p>	<p>U.S.</p> <p>1</p> <p>MTS 1/2</p> <p>Public Lds. Expl.</p> <p>9-1-89</p> <p>36641</p> <p>0087</p> <p>1</p> <p>170.417</p> <p>524.636</p> <p>170.417</p> <p>524.636</p> <p>U.S.</p> <p>0118</p> <p>Public Lds. Expl. V2</p> <p>9-1-89</p> <p>J.M. McKnight</p> <p>52/160</p>	<p>State</p> <p>1</p> <p>MTS 1/2</p> <p>Public Lds. Expl.</p> <p>9-1-89</p> <p>36641</p> <p>0087</p> <p>1</p> <p>208.052</p> <p>640.16</p> <p>U.S.</p> <p>0118</p> <p>Public Lds. Expl. V2</p> <p>9-1-89</p> <p>J.M. McKnight</p> <p>52/160</p>	<p>State</p> <p>1</p> <p>MTS 1/2</p> <p>Public Lds. Expl.</p> <p>9-1-89</p> <p>36641</p> <p>0087</p> <p>1</p> <p>208.052</p> <p>640.16</p> <p>U.S.</p> <p>0118</p> <p>Public Lds. Expl. V2</p> <p>9-1-89</p> <p>J.M. McKnight</p> <p>52/160</p>
<p>U.S.</p> <p>1</p> <p>MTS 1/2</p> <p>Public Lds. Expl. V2</p> <p>9-1-89</p> <p>36703</p> <p>0081</p> <p>1</p> <p>195/600</p> <p>U.S.</p> <p>0118</p> <p>Public Lds. Expl. V2</p> <p>9-1-89</p> <p>E.M. Haley</p> <p>52/160</p>	<p>State</p> <p>1</p> <p>MTS 1/2</p> <p>Public Lds. Expl.</p> <p>9-1-89</p> <p>36653</p> <p>0080</p> <p>1</p> <p>78/240</p> <p>U.S.</p> <p>0118</p> <p>Public Lds. Expl. V2</p> <p>9-1-89</p> <p>E.M. Haley</p> <p>52/160</p>	<p>U.S.</p> <p>1</p> <p>MTS 1/2</p> <p>Public Lds. Expl.</p> <p>9-1-89</p> <p>36641</p> <p>0087</p> <p>1</p> <p>131.4983</p> <p>404.61</p> <p>U.S.</p> <p>0118</p> <p>Public Lds. Expl. V2</p> <p>9-1-89</p> <p>J.M. McKnight</p> <p>52/160</p>	<p>State</p> <p>1</p> <p>MTS 1/2</p> <p>Public Lds. Expl.</p> <p>9-1-89</p> <p>36641</p> <p>0087</p> <p>1</p> <p>208/640</p> <p>U.S.</p> <p>0118</p> <p>Public Lds. Expl. V2</p> <p>9-1-89</p> <p>J.M. McKnight</p> <p>52/160</p>	<p>State</p> <p>1</p> <p>MTS 1/2</p> <p>Public Lds. Expl.</p> <p>9-1-89</p> <p>36641</p> <p>0087</p> <p>1</p> <p>208/640</p> <p>U.S.</p> <p>0118</p> <p>Public Lds. Expl. V2</p> <p>9-1-89</p> <p>J.M. McKnight</p> <p>52/160</p>
<p>U.S.</p> <p>1</p> <p>MTS 1/2</p> <p>Public Lds. Expl. V2</p> <p>9-1-89</p> <p>36653</p> <p>0080</p> <p>1</p> <p>195/600</p> <p>U.S.</p> <p>0118</p> <p>Public Lds. Expl. V2</p> <p>9-1-89</p> <p>E.M. Haley</p> <p>52/160</p>	<p>State</p> <p>1</p> <p>MTS 1/2</p> <p>Public Lds. Expl.</p> <p>9-1-89</p> <p>36653</p> <p>0080</p> <p>1</p> <p>78/240</p> <p>U.S.</p> <p>0118</p> <p>Public Lds. Expl. V2</p> <p>9-1-89</p> <p>E.M. Haley</p> <p>52/160</p>	<p>U.S.</p> <p>1</p> <p>MTS 1/2</p> <p>Public Lds. Expl.</p> <p>9-1-89</p> <p>36641</p> <p>0087</p> <p>1</p> <p>131.4983</p> <p>404.61</p> <p>U.S.</p> <p>0118</p> <p>Public Lds. Expl. V2</p> <p>9-1-89</p> <p>J.M. McKnight</p> <p>52/160</p>	<p>State</p> <p>1</p> <p>MTS 1/2</p> <p>Public Lds. Expl.</p> <p>9-1-89</p> <p>36641</p> <p>0087</p> <p>1</p> <p>208/640</p> <p>U.S.</p> <p>0118</p> <p>Public Lds. Expl. V2</p> <p>9-1-89</p> <p>J.M. McKnight</p> <p>52/160</p>	<p>State</p> <p>1</p> <p>MTS 1/2</p> <p>Public Lds. Expl.</p> <p>9-1-89</p> <p>36641</p> <p>0087</p> <p>1</p> <p>208/640</p> <p>U.S.</p> <p>0118</p> <p>Public Lds. Expl. V2</p> <p>9-1-89</p> <p>J.M. McKnight</p> <p>52/160</p>
<p>U.S.</p> <p>1</p> <p>MTS 1/2</p> <p>Public Lds. Expl. V2</p> <p>9-1-89</p> <p>36653</p> <p>0080</p> <p>1</p> <p>195/600</p> <p>U.S.</p> <p>0118</p> <p>Public Lds. Expl. V2</p> <p>9-1-89</p> <p>E.M. Haley</p> <p>52/160</p>	<p>State</p> <p>1</p> <p>MTS 1/2</p> <p>Public Lds. Expl.</p> <p>9-1-89</p> <p>36653</p> <p>0080</p> <p>1</p> <p>78/240</p> <p>U.S.</p> <p>0118</p> <p>Public Lds. Expl. V2</p> <p>9-1-89</p> <p>E.M. Haley</p> <p>52/160</p>	<p>U.S.</p> <p>1</p> <p>MTS 1/2</p> <p>Public Lds. Expl.</p> <p>9-1-89</p> <p>36641</p> <p>0087</p> <p>1</p> <p>131.4983</p> <p>404.61</p> <p>U.S.</p> <p>0118</p> <p>Public Lds. Expl. V2</p> <p>9-1-89</p> <p>J.M. McKnight</p> <p>52/160</p>	<p>State</p> <p>1</p> <p>MTS 1/2</p> <p>Public Lds. Expl.</p> <p>9-1-89</p> <p>36641</p> <p>0087</p> <p>1</p> <p>208/640</p> <p>U.S.</p> <p>0118</p> <p>Public Lds. Expl. V2</p> <p>9-1-89</p> <p>J.M. McKnight</p> <p>52/160</p>	<p>State</p> <p>1</p> <p>MTS 1/2</p> <p>Public Lds. Expl.</p> <p>9-1-89</p> <p>36641</p> <p>0087</p> <p>1</p> <p>208/640</p> <p>U.S.</p> <p>0118</p> <p>Public Lds. Expl. V2</p> <p>9-1-89</p> <p>J.M. McKnight</p> <p>52/160</p>
<p>U.S.</p> <p>1</p> <p>MTS 1/2</p> <p>Public Lds. Expl. V2</p> <p>9-1-89</p> <p>36653</p> <p>0080</p> <p>1</p> <p>195/600</p> <p>U.S.</p> <p>0118</p> <p>Public Lds. Expl. V2</p> <p>9-1-89</p> <p>E.M. Haley</p> <p>52/160</p>	<p>State</p> <p>1</p> <p>MTS 1/2</p> <p>Public Lds. Expl.</p> <p>9-1-89</p> <p>36653</p> <p>0080</p> <p>1</p> <p>78/240</p> <p>U.S.</p> <p>0118</p> <p>Public Lds. Expl. V2</p> <p>9-1-89</p> <p>E.M. Haley</p> <p>52/160</p>	<p>U.S.</p> <p>1</p> <p>MTS 1/2</p> <p>Public Lds. Expl.</p> <p>9-1-89</p> <p>36641</p> <p>0087</p> <p>1</p> <p>131.4983</p> <p>404.61</p> <p>U.S.</p> <p>0118</p> <p>Public Lds. Expl. V2</p> <p>9-1-89</p> <p>J.M. McKnight</p> <p>52/160</p>	<p>State</p> <p>1</p> <p>MTS 1/2</p> <p>Public Lds. Expl.</p> <p>9-1-89</p> <p>36641</p> <p>0087</p> <p>1</p> <p>208/640</p> <p>U.S.</p> <p>0118</p> <p>Public Lds. Expl. V2</p> <p>9-1-89</p> <p>J.M. McKnight</p> <p>52/160</p>	<p>State</p> <p>1</p> <p>MTS 1/2</p> <p>Public Lds. Expl.</p> <p>9-1-89</p> <p>36641</p> <p>0087</p> <p>1</p> <p>208/640</p> <p>U.S.</p> <p>0118</p> <p></p>