

By JVP
Rcvd. MAY 12, 1984
JVP

STEVENS OPERATING CORPORATION

118 WEST FIRST STREET
P. O. BOX 2203
ROSWELL, NEW MEXICO 88201
505 /622-7273

May 11, 1984

Mr. Joe D. Ramey, Director
New Mexico Oil Conservation Division
P. O. Box 2088
Santa Fe, New Mexico 87501

NSL-1824
RULE 104FI
RELEASE JUNE 1, 1984
PECOS SLOPE ABO POOL

Re: Stevens Operating Corporation
Tatum Com Fed. #1
330' FNL 330' FEL
Section 35, T6S, R22E
Chaves County, New Mexico

Dear Mr. Ramey:

Application is hereby made for administrative approval for an unorthodox location due to the presence of unacceptable topography.

On May 9, 1984 two orthodox locations were surveyed in the NE/4NE/4 of Section 35. The first of these locations was surveyed at 660' FNL 660' FEL. This location falls within 60' of the main transcontinental El Paso Natural Gas Company Pipeline. Another location was surveyed 990' FNL 990' FEL, this location fell within 30' of the Transwestern Pipeline Company's pipeline. The surface of the ground in the vicinity of the orthodox locations are composed of outcrops of San Andres Limestone and would require drilling and blasting in order to make a level drilling pad. The construction of a drilling sight in this terrain could cost as much as \$25,000.00. A location 330' FNL 330' FEL falls in an area of gentle slope where it will be possible to build a location without the necessity of drilling and blasting, and where natural drainage will not be disturbed by the construction.

Offset operators have been notified of this application.

Please grant administrative approval for this unorthodox location at your earliest convenience.

Yours very truly,

STEVENS OPERATING CORPORATION


John V. Walker

JVW/clw

cc: McKay Oil Company
Sun Production Company

NEW MEXICO OIL CONSERVATION COMMISSION
WELL LOCATION AND ACREAGE DEDICATION PLAT

Form C-102
Supersedes C-128
Effective 1-1-65

All distances must be from the outer boundaries of the Section.

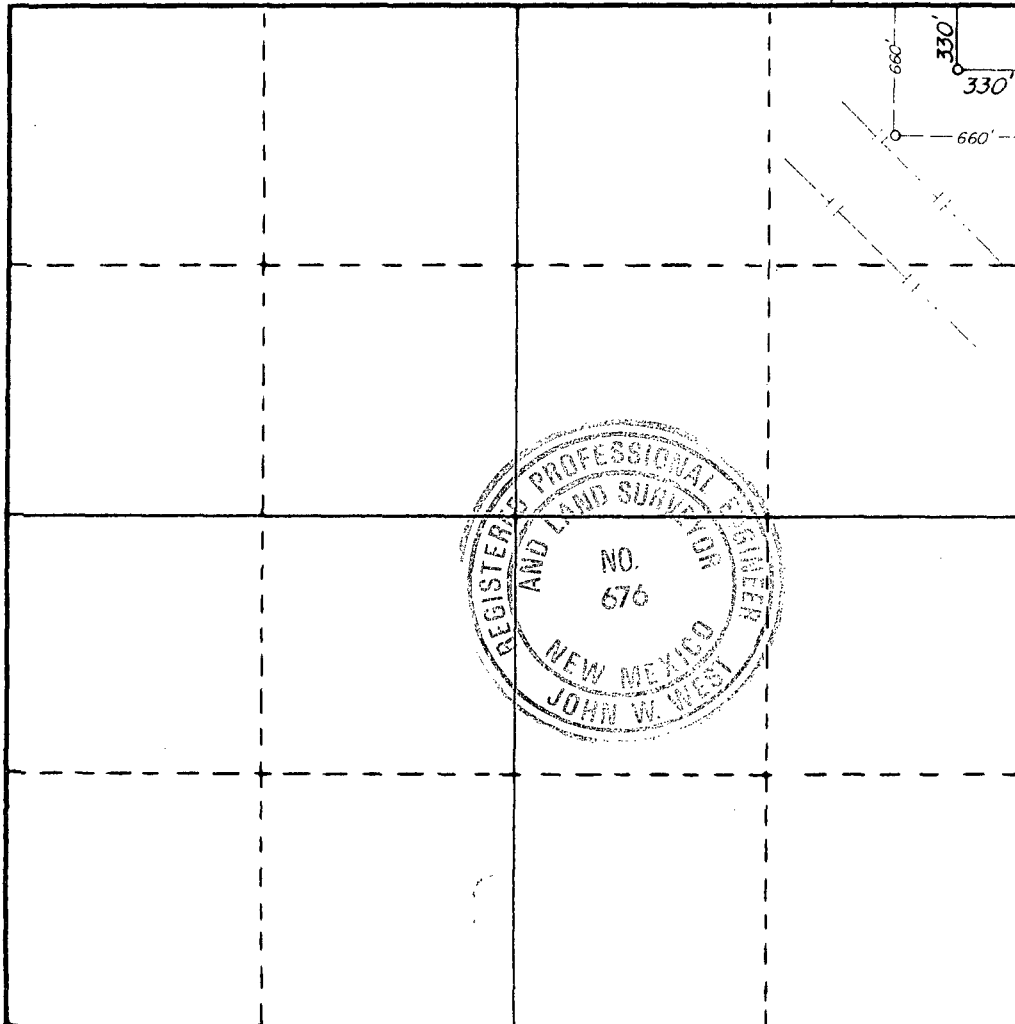
Operator STEVENS OPERATING CO.		Lease TATUM COM. FED		Well No. 1
Unit Letter A	Section 35	Township 6S	Range 22E	County CHAVES
Actual Footage Location of Well: 330 feet from the NORTH line and 330 feet from the EAST line				
Ground Level Elev. 4184.3	Producing Formation	Pool	Dedicated Acreage: Acres	

1. Outline the acreage dedicated to the subject well by colored pencil or hachure marks on the plat below.
2. If more than one lease is dedicated to the well, outline each and identify the ownership thereof (both as to working interest and royalty).
3. If more than one lease of different ownership is dedicated to the well, have the interests of all owners been consolidated by communitization, unitization, force-pooling, etc?

☐ Yes ☐ No If answer is "yes," type of consolidation _____

If answer is "no," list the owners and tract descriptions which have actually been consolidated. (Use reverse side of this form if necessary.) _____

No allowable will be assigned to the well until all interests have been consolidated (by communitization, unitization, forced-pooling, or otherwise) or until a non-standard unit, eliminating such interests, has been approved by the Commission.



CERTIFICATION

I hereby certify that the information contained herein is true and complete to the best of my knowledge and belief.

Name

Position

Company

Date

I hereby certify that the well location shown on this plat was plotted from field notes of actual surveys made by me or under my supervision, and that the same is true and correct to the best of my knowledge and belief.

Date Surveyed

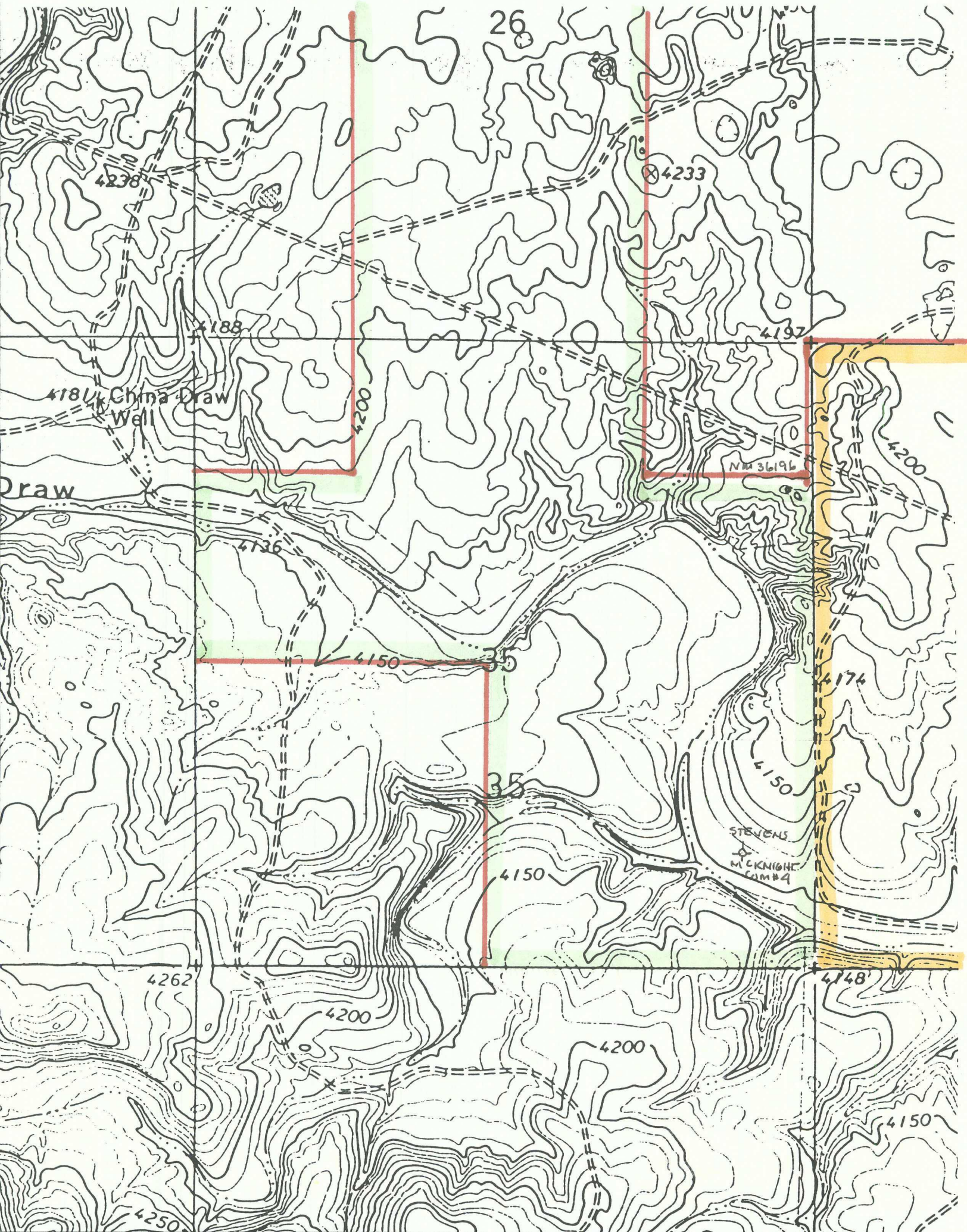
5/9/84

Registered Professional Engineer
and/or Land Surveyor

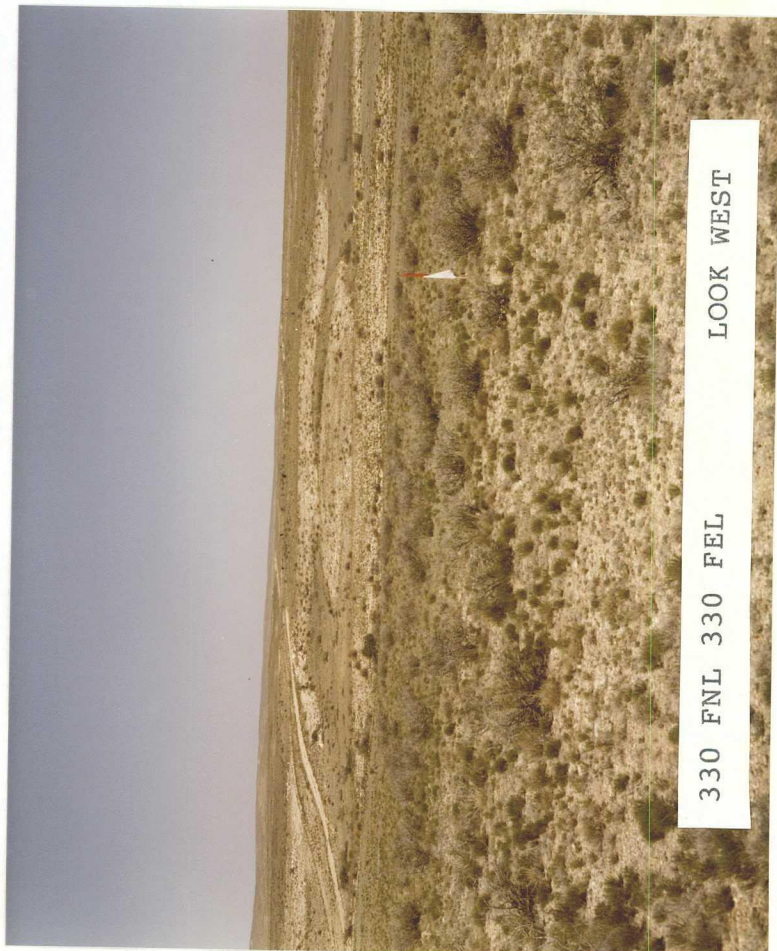
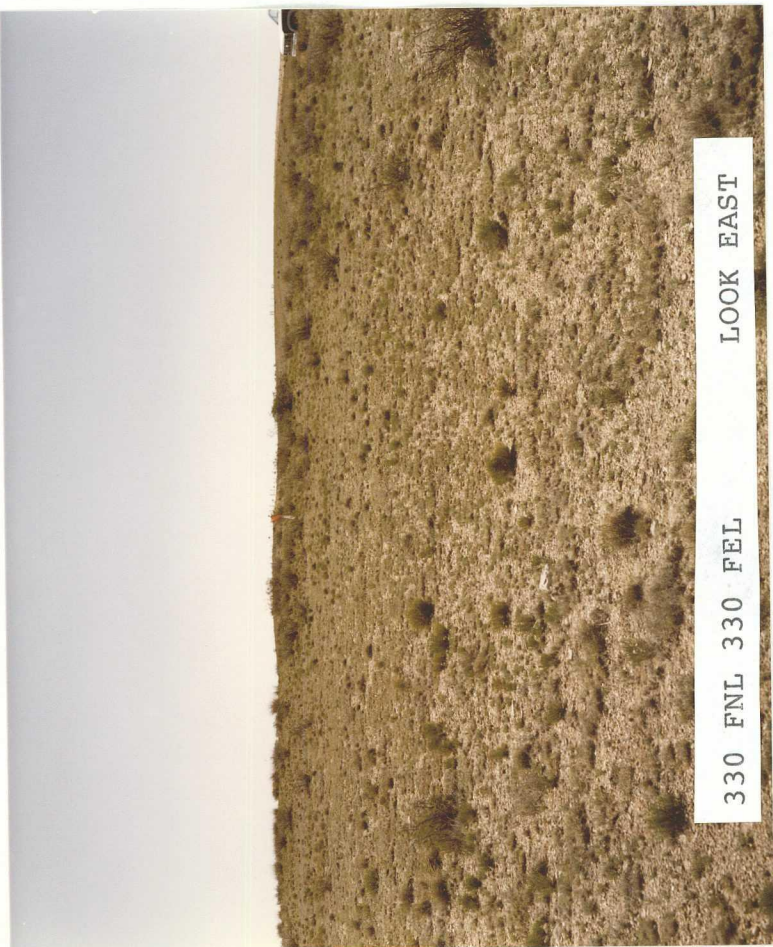
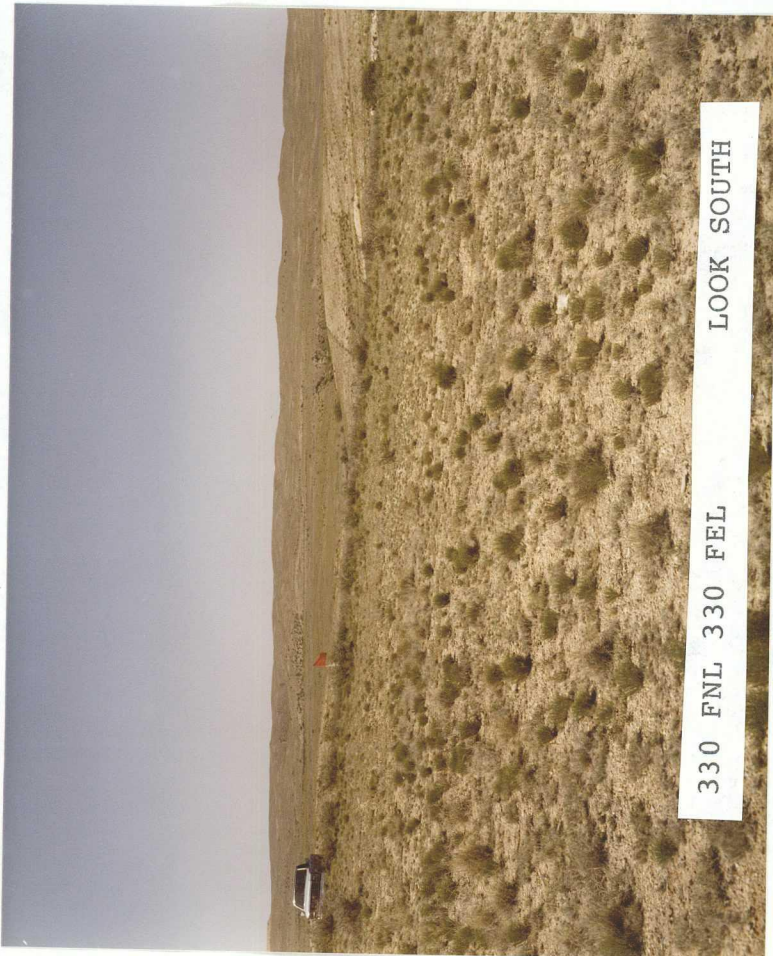
Certificate No. JOHN W. WEST, 676

RONALD J. EIDSON, 3239

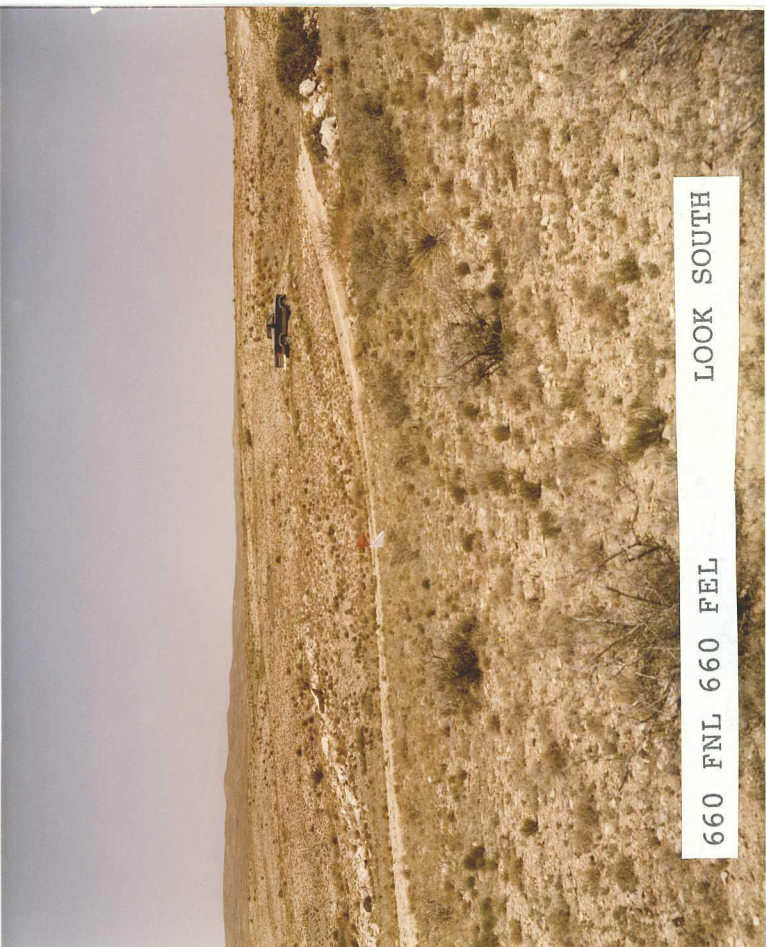
0 330 660 990 1320 1650 1980 2310 2640 2970 3300 3630 3960 4290 4620 4950 5280 5610 5940 6270 6600



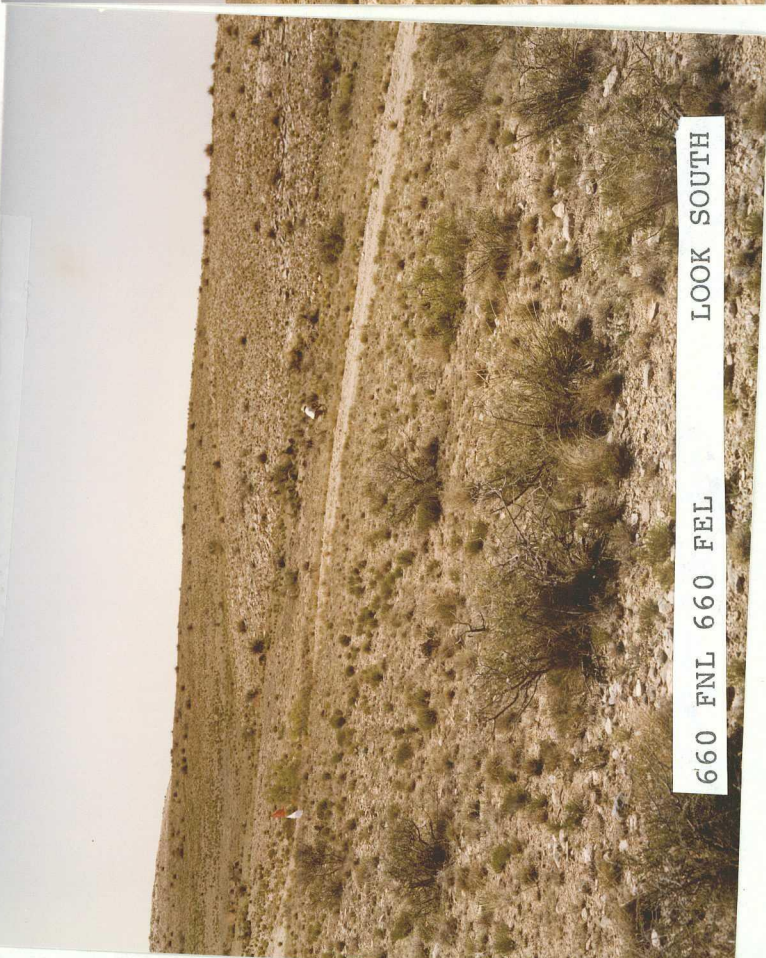
STEVENS OPERATING CORP APPLICATION FOR UNORTHODOX LOCATION
FOR TATUM FED COM # 1 330 FNL 330 FEL SET 35 T6SR22E



STEVENS OPERATING CORP APPLICATION FOR UNORTHODOX LOCATION
FOR TATUM FED COM. #1 ILLUSTRATION OF ORTHODOX
LOCATION 660 FNL 660 FEL SEL 35 T6S R22E



660 FNL 660 FEL LOOK SOUTH



660 FNL 660 FEL LOOK SOUTH



EL PASO
PIPELINE

660 FNL 660 FEL LOOK EAST

STEVENS OPERATING CORP APPLICATION FOR UNORTHODOX
LOCATION TATUM FED COM. #1 ILLUSTRATION OF ORTHODOX
LOCATION 990 FNL 990 FEL SEC 35 T6S R22E

