

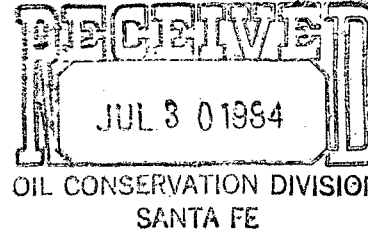


Amoco Production Company

Petroleum Center Building
501 Airport Drive
Farmington, New Mexico 87401
505-325-8841

W. J. Holcomb
District Manager

July 25, 1984



Mr. Joe D. Ramey
New Mexico Conservation Division
P. O. Box 2088
Santa Fe, NM 87501

*Fee less
~~State~~
~~Federal~~*

File: DDL-684-400.1

NSL-1867

Rule 104FI

Release Aug. 19, 1984

Application for Unorthodox Location
Rosa Unit No. 107

Basin Dakota/Undesignated Gallup Field Pools
Rio Arriba County, New Mexico

*3/2 of Sec. 4 } dedicated
SW/4 of Sec 4 }*

Amoco Production Company hereby requests approval of an unorthodox location for the Rosa Unit No. 107. The proposed location is 2160' FSL x 1850' FWL of Section 4, T31N, R5W, Rio Arriba County, New Mexico.

This well was staked in the unorthodox location indicated above because there was a steep rock face to the north and east. There was also deep drainage to the south.

There are no offset lease holders as shown on the attached nine-section plat.

Yours very truly,

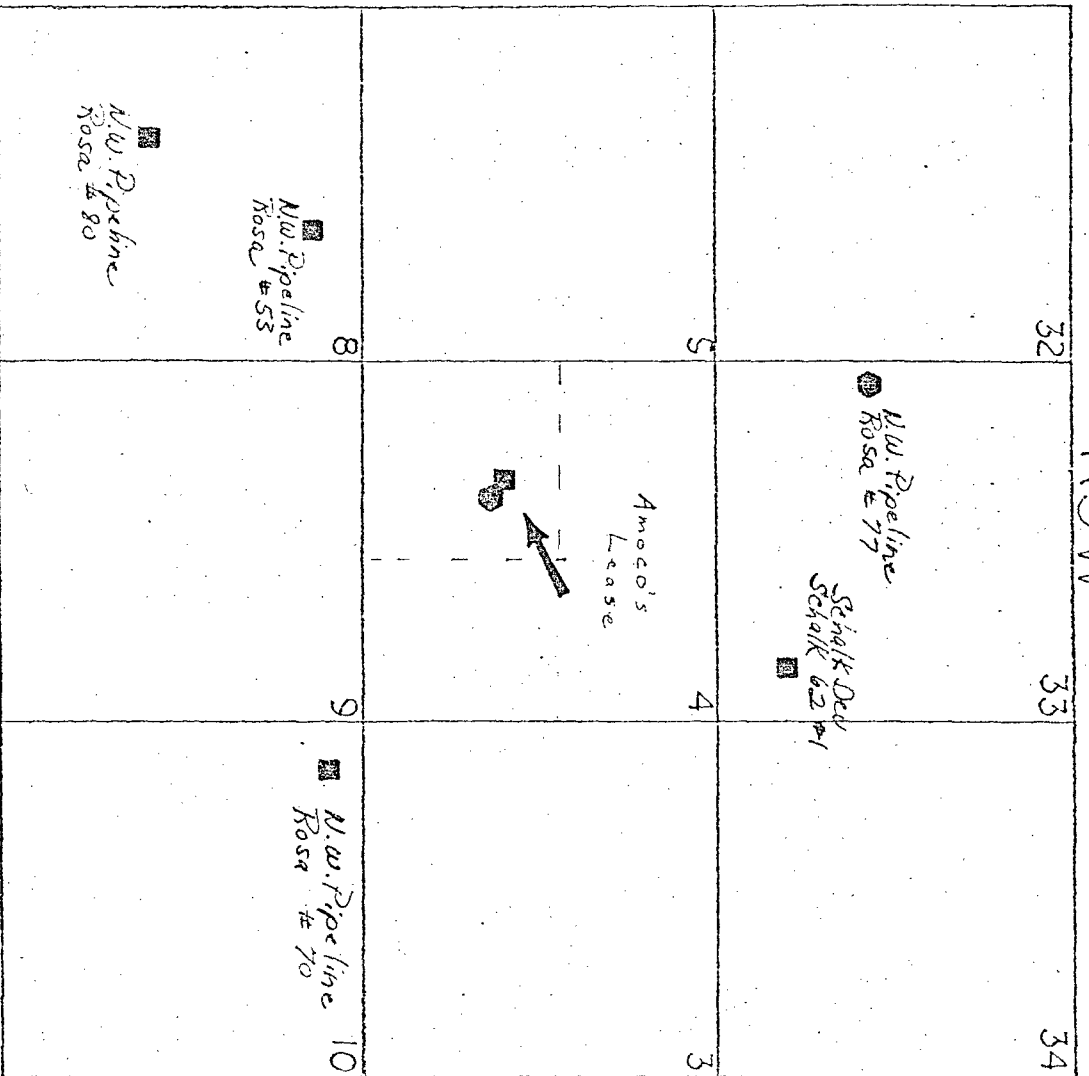
W. J. Holcomb *0712*

KRJ/ct

Attachments

cc: Mr. Ernie Bush
New Mexico Oil Conservation Division
1000 Rio Brazos Road
Aztec, NM 87410

R5W



T 32 N

T 31 N

■ BASIN DAKOTA

● UNDES GALLUP

All distances must be from the outer boundaries of the Section.

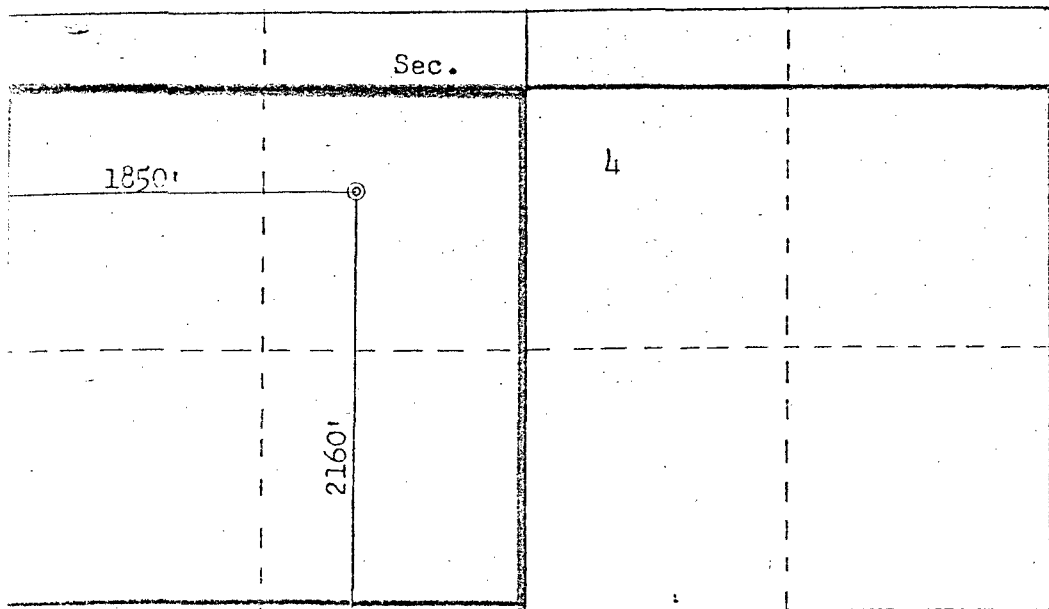
Operator AMOCO PRODUCTION COMPANY			Lease RCSA UNIT		Well No. 107
Unit Letter K	Section 4	Township 31N	Range 5W	County Rio Arriba	
Actual Footage Location of Well: 2160 feet from the South line and 1850 feet from the West line					
Ground Level Elev: 6179	Producing Formation Dakota & Gallup		Pool Basin Dakota/Undes. Gallup		Dedicated Acreage: 320/160 Acres

1. Outline the acreage dedicated to the subject well by colored pencil or hatchure marks on the plat below.
2. If more than one lease is dedicated to the well, outline each and identify the ownership thereof (both as to working interest and royalty).
3. If more than one lease of different ownership is dedicated to the well, have the interests of all owners been consolidated by communitization, unitization, force-pooling, etc?

☒ Yes ☐ No If answer is "yes," type of consolidation Unitized

If answer is "no," list the owners and tract descriptions which have actually been consolidated. (Use reverse side of this form if necessary.)

No allowable will be assigned to the well until all interests have been consolidated (by communitization, unitization, forced-pooling, or otherwise) or until a non-standard unit, eliminating such interests, has been approved by the Commission.



Scale: 1"=1000'

CERTIFICATION

I hereby certify that the information contained herein is true and complete to the best of my knowledge and belief.

Name

B. D. Shaw

Position

Adm. Supervisor

Company

Amoco Production Company

Date

7-2-84

I hereby certify that the well location shown on this plat was plotted from field notes of actual surveys made by me or under my supervision, and that the same is true and correct to the best of my knowledge and belief.

Date Surveyed

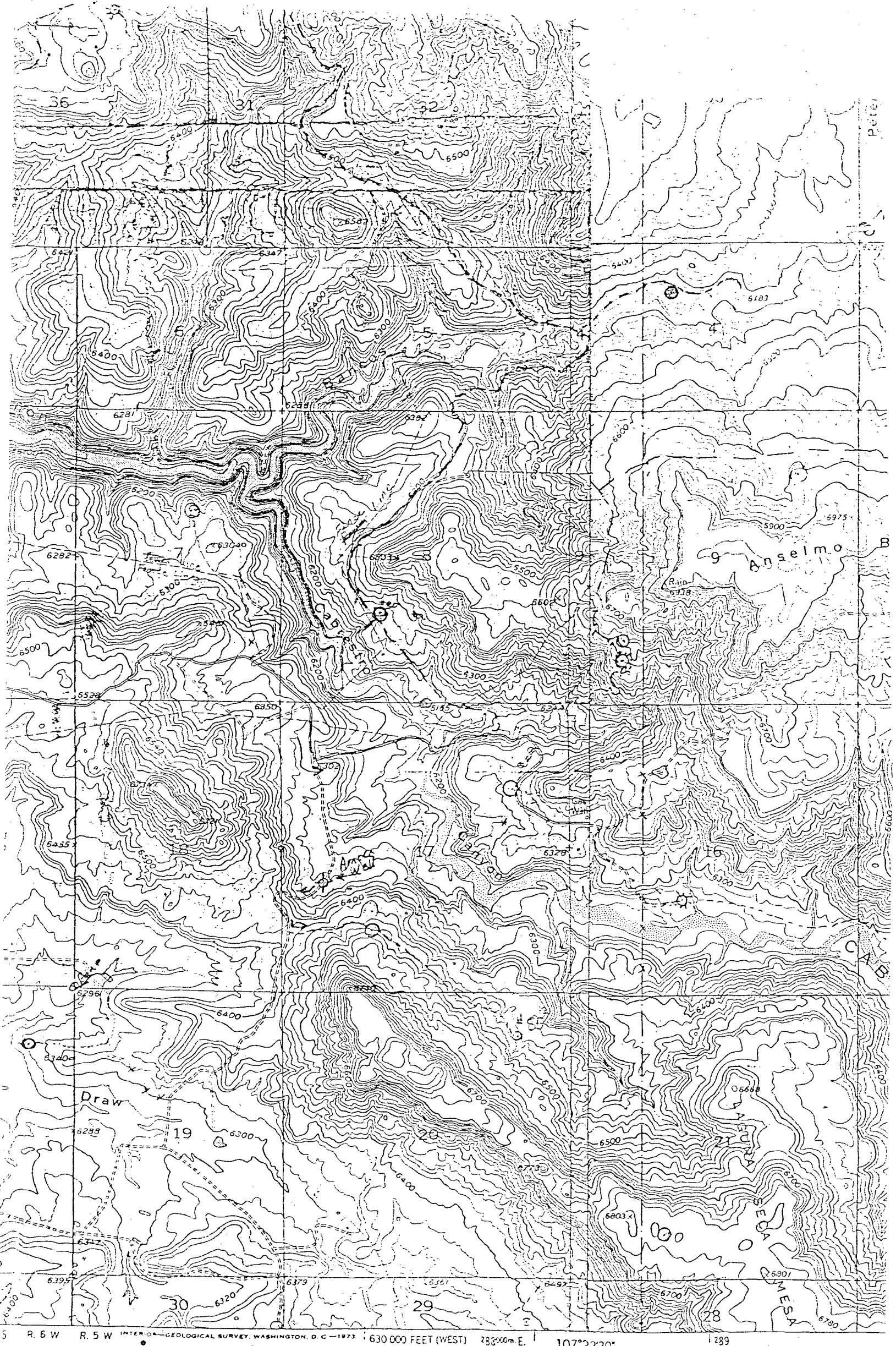
March 22, 1984

Registered Professional Engineer
and Land Surveyor.

Fred B. Kerr Jr.

Certificate No. 4222

3950



Vicinity Map for
 AMOCO PRODUCTION COMPANY #107 ROSA UNIT
 2160' FSL 1850' FWL Sec. 4-T31N-R5W
 RIO ARriba COUNTY, NEW MEXICO

Edited, and published by the Geologic
 USGS and USC&GS
 by photogrammetric methods from aerial
 between 1958 and 1962. Field checked 1963

Polyconic projection 1927 North American datum
 10 000-foot grid based on New Mexico coordinate system
 1:50 000 scale. Source: Landsat MSS, Landsat TM, Landsat TM