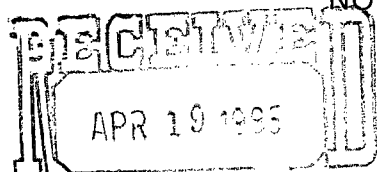


*Release Immediately
No offsets*

By DEC



OIL CONSERVATION DIVISION
SANTA FE

NORTHWEST PIPELINE CORPORATION

PRODUCTION & DRILLING
P.O. BOX 90
FARMINGTON, NEW MEXICO 87499
4320-PD-091-85

*NSL-2030
Rule-104(AE)*

April 16th, 1985

New Mexico Oil Conservation Division
P.O. Box 2088
Santa Fe, New Mexico 87503

*Dedicated acreage -
462 S. 28-320 - Blanco Mesa Verde
S. 14 - 160 - Los Pinos Farmstead
Section 28 Pictured Cliffs*

*460 F. 14 line Section 28
460 FS line Section 28
T-32N-R-7W*

Attention: Dave Catanach

Dear Sir:

Northwest Pipeline Corporation is requesting approval of an unorthodox well location due to the topography on the San Juan 32-7 Unit #83, location in the southwest quarter of Section 28, T-32-N, R-7-W.

The location is bordered on both the east and north by extremely rough terrain and cliffs making a standard location staking unfeasible (see attached plat).

The adjoining quarter sections are all 100% owned by Northwest Pipeline Corporation in both the Pictured Cliffs and Mesa Verde formations thus no notification of offset operators will need to be made.

The approval of the Minerals Management Service "Application for Permit to Drill" is pending state approval of an unorthodox location therefore please notify Earl Beecher of the Minerals Management Service here in Farmington when approved.

If you have any questions feel free to call me at 327-5351 Ext. 101.

Sincerely,

M.J. Turnbaugh
M.J. Turnbaugh
Senior Engineer

CC: Ernie Busch (NMOCD-Aztec)

MJT/skl

OIL CONSERVATION DIVISION

STATE OF NEW MEXICO
ENERGY AND MINERALS DEPARTMENTP. O. BOX 2088
SANTA FE, NEW MEXICO 87501Form C-107
Revised 10-1

All distances must be from the outer boundaries of the Section.

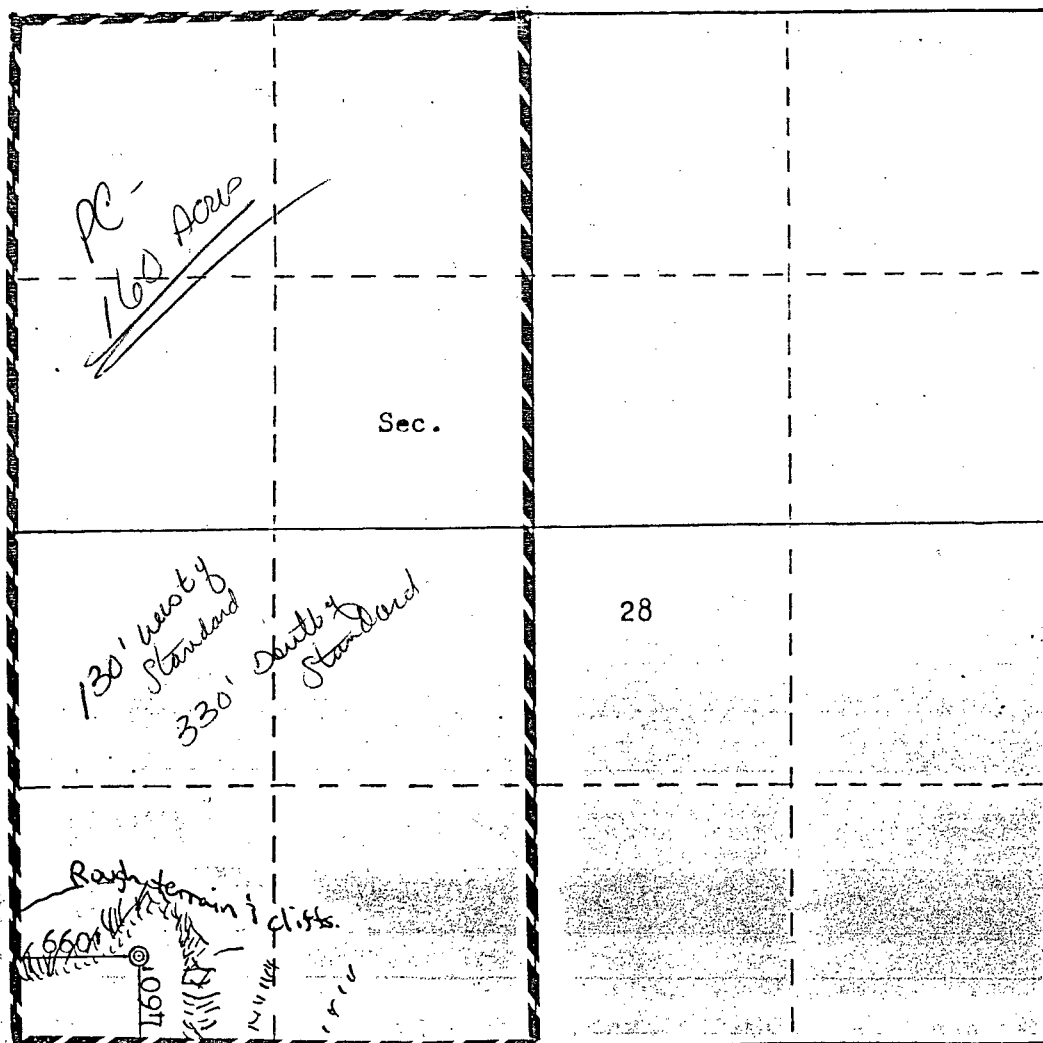
Operator NORTHWEST PIPELINE CORPORATION			Lease SAN JUAN 32-7 UNIT		Well No. 83
Unit Letter M	Section 28	Township 32N	Range 7W	County San Juan	
Actual Footage Location of Well: L60 feet from the South line and 660 feet from the West line					
Ground Level Elev. 6634	Producing Formation Mesa Verde	Pool Blanco MV/So. Los Pinos Frt-PC		Dedicated Acreage: 320 PC/320 MV Acres	

1. Outline the acreage dedicated to the subject well by colored pencil or hachure marks on the plat below.
2. If more than one lease is dedicated to the well, outline each and identify the ownership thereof (both as to working interest and royalty).
3. If more than one lease of different ownership is dedicated to the well, have the interests of all owners been consolidated by communitization, unitization, force-pooling, etc?

☒ Yes ☐ No If answer is "yes," type of consolidation Unitization

If answer is "no," list the owners and tract descriptions which have actually been consolidated. (Use reverse side of this form if necessary.)

No allowable will be assigned to the well until all interests have been consolidated (by communitization, unitization, forced-pooling, or otherwise) or until a non-standard unit, eliminating such interests, has been approved by the Commission.



CERTIFICATION

I hereby certify that the information contained herein is true and complete to the best of my knowledge and belief.

Mike J. Turnbaugh
Name

Mike J. Turnbaugh

Position
Sr. Engineer

Company
Northwest Pipeline Corp.

Date
March 8, 1985

I hereby certify that the well location shown on this plat was plotted from field notes of actual surveys made by me or under my supervision, and that the same is true and correct to the best of my knowledge and belief.

Date Surveyed
March 8, 1985
REGISTERED LAND SURVEYOR
and Registered Professional Engineer
Fred B. Kerr Jr.
Fred B. Kerr Jr.

R - 7 - W

R - 6 - W

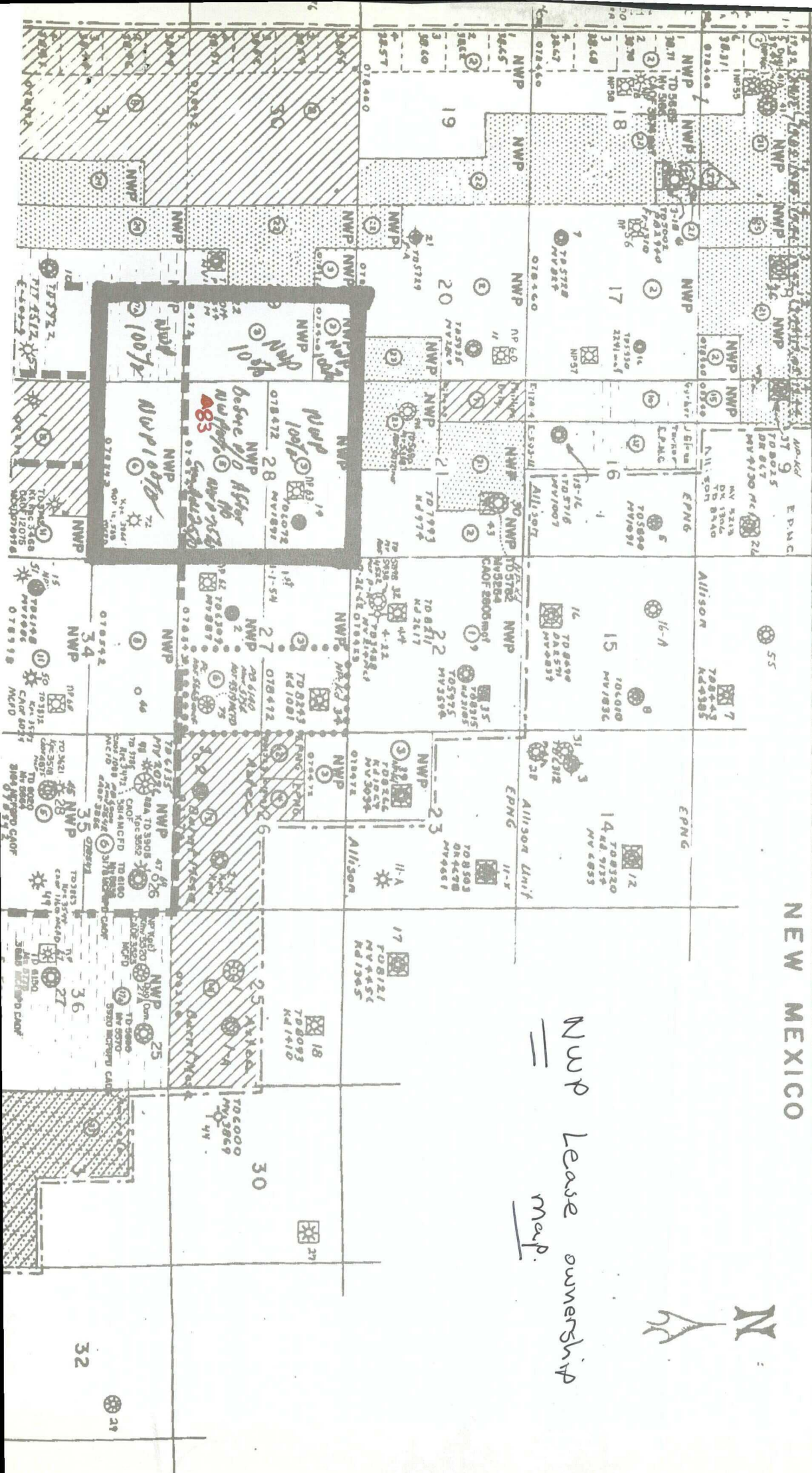
- 7 TD7916
TD7910
NV2844
Ad3545
- 3 TD7916
NV2844
Ad3545
- 22 TD7941
NV5868
Ad2060
- 10
- 19 TD8608
NV2052
Ad2574
- 25 TD8365
NV3110
Ad3433

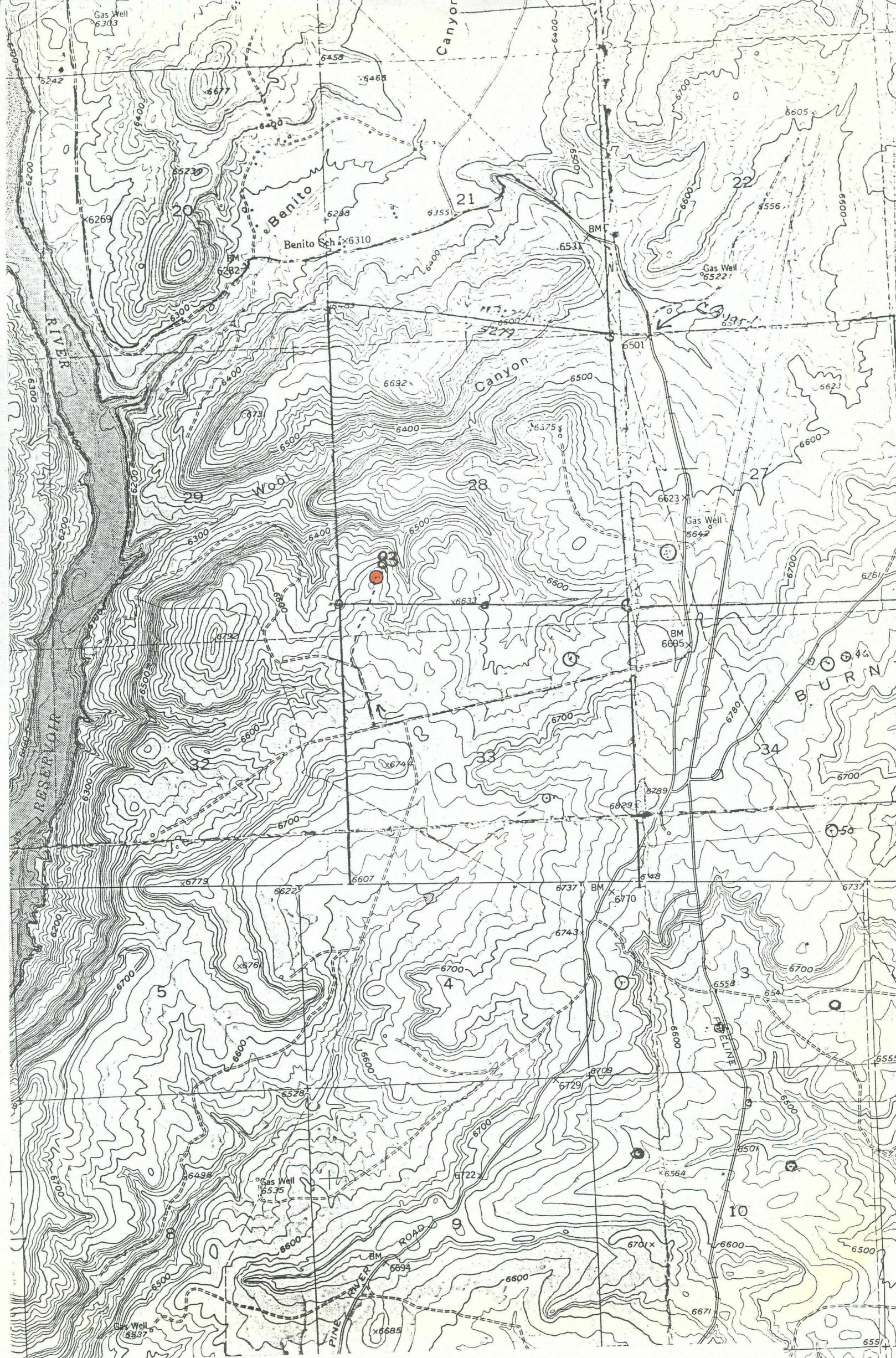
COLORADO

NEW MEXICO



NWP Lease ownership
map.





Vicinity Map for
NORTHWEST PIPELINE CORPORATION #83 SAN JUAN 32-7 UNIT
L460' FSL 660' FWL Sec. 28-T32^N-R7W
SAN JUAN COUNTY, NEW MEXICO

