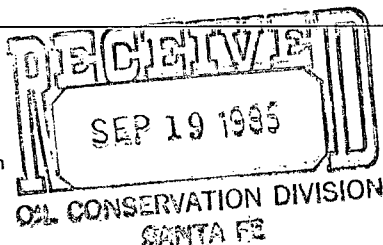




Donald W. Johnson
Division Manager
Production Department
Hobbs Division
North American Production



Conoco Inc.
P.O. Box 460
726 East Michigan
Hobbs, NM 88240
(505) 393-4141

NSL-2136

September 12, 1985

State of New Mexico
Energy and Minerals Department
Oil Conservation Division
P. O. Box 2088
Santa Fe, NM 87501

Attention Mr. Dick Stamets, Director

Gentlemen:

Request for Unorthodox location - MCA Unit No. 366, 1175' FNL and 1245' FWL of Section 26, T-17S, R-32E, Lea County, New Mexico. Maljamar G/SA Pool

Conoco Inc. respectfully requests administrative approval to drill the subject well at an unorthodox location in Unit letter D, 1175' FNL and 1245' FWL of Section 26, T-17S, R-32E, Lea County, New Mexico. This is an amended location to 1225' FNL and 1245' FWL of Section 26, T-17S, R-32E, Lea County, New Mexico which was requested in a previous letter dated August 28, 1985. The new unorthodox location is required to avoid existing power lines.

Attached is Form C-102 showing the new well location and dedication.

Yours very truly,

ELK:jr

**NEW MEXICO OIL CONSERVATION COMMISSION
WELL LOCATION AND ACREAGE DEDICATION PLAT**

Form C-102
Supersedes C-128
Effective 1-1-65

All distances must be from the outer boundaries of the Section.

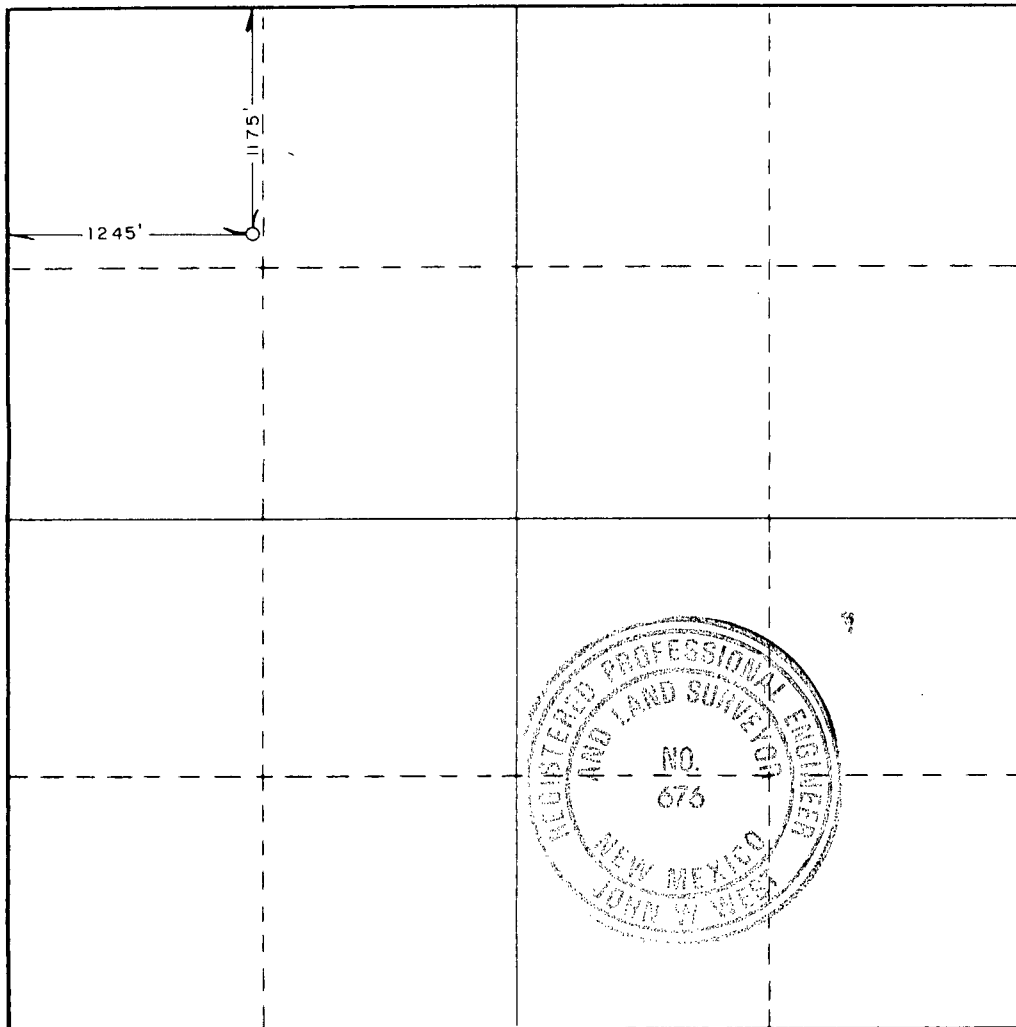
Operator CONOCO, INC.			Lease M. C. A. UNIT		Well No. 366
Unit Letter D	Section 26	Township 17 SOUTH	Range 32 EAST	County LEA	
Actual Footage Location of Well: <div style="display: flex; justify-content: space-between;"> 1175 feet from the NORTH line and 1245 feet from the WEST line </div>					
Ground Level Elev. 3972.3'	Producing Formation GRAYBURG	Pool MAIJAMAR G/SA	Dedicated Acreage: 40 Acres		

1. Outline the acreage dedicated to the subject well by colored pencil or hachure marks on the plat below.
2. If more than one lease is dedicated to the well, outline each and identify the ownership thereof (both as to working interest and royalty).
3. If more than one lease of different ownership is dedicated to the well, have the interests of all owners been consolidated by communitization, unitization, force-pooling, etc?

☐ Yes ☐ No If answer is "yes," type of consolidation _____

If answer is "no," list the owners and tract descriptions which have actually been consolidated. (Use reverse side of this form if necessary.) _____

No allowable will be assigned to the well until all interests have been consolidated (by communitization, unitization, forced-pooling, or otherwise) or until a non-standard unit, eliminating such interests, has been approved by the Commission.



CERTIFICATION

I hereby certify that the information contained herein is true and complete to the best of my knowledge and belief.

Name *Kevin L. Vogel*
 Position ADMINISTRATIVE SUPERVISOR
 Company CONOCO INC.

Date 9-12-85

I hereby certify that the well location shown on this plat was plotted from field notes of actual surveys made by me or under my supervision, and that the same is true and correct to the best of my knowledge and belief.

Date Surveyed SEPTEMBER 7, 1985

Registered Professional Engineer and/or Land Surveyor

John W. West
 Certificate No. JOHN W. WEST, 676
RONALD J. EIDSON, 3239



TONY ANAYA
GOVERNOR

STATE OF NEW MEXICO
ENERGY AND MINERALS DEPARTMENT
OIL CONSERVATION DIVISION

September 10, 1985

50 YEARS



1935 - 1985

POST OFFICE BOX 2088
STATE LAND OFFICE BUILDING
SANTA FE, NEW MEXICO 87501
(505) 827-5800

Conoco Inc.
P. O. Box 460
Hobbs, New Mexico 88240

Attention: Donald W. Johnson

Administrative Order NSL-2136

Gentlemen:

Reference is made to your application for a non-standard location for your MCA Unit No. 366 well to be located 1225 feet from the North line and 1245 feet from the West line of Section 26, Township 17 South, Range 32 East, NMPM, Maljamar Grayburg San Andres Pool, Lea County, New Mexico. The NW/4 NW/4 of said Section 26 shall be dedicated to the well.

By authority granted me under the provisions of Rule 104 F(I), the above-described unorthodox location is hereby approved.

Sincerely,

R. L. STAMETS, DIRECTOR

RLS/DC/dr

cc: Oil Conservation Division - Hobbs
Bureau of Land Management - Hobbs

*Release Immed.
No effects*



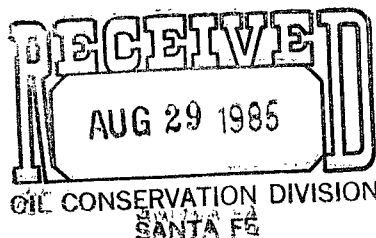
B7 DEC

Donald W. Johnson
Division Manager
Production Department
Hobbs Division
North American Production

Conoco Inc.
P.O. Box 460
726 East Michigan
Hobbs, NM 88240
(505) 393-4141

*NSL-2136
RUE-1047(I)*

August 28, 1985



State of New Mexico
Energy and Minerals Department
Oil Conservation Division
P.O. Box 2088
Santa Fe, NM 87501

*Maljamar G/SA Pool
40 Acres dead
NW/4 NW/4*

Attention: Mr. Dick Stamets, Director

Gentlemen:

REQUEST FOR UNORTHODOX LOCATION - MCA UNIT NO. 366, 1225' FNL AND 1245' FWL OF SECTION 26, T17S, R32E, LEA COUNTY, NEW MEXICO. MALJAMAR G/SA POOL.

Conoco Inc. respectfully requests administrative approval to drill the subject well at an unorthodox location in unit letter D, 1225' FNL and 1245' FWL of Section 26, T17S, R32E, Lea County, New Mexico. This well is a replacement well for MCA No. 342 located 1225' FNL and 1295' FWL of Section 26, T17S, R32E, Lea County, New Mexico which was plugged and abandoned in 1976 because a bend in the casing made it a non-useable wellbore. The unorthodox location is required to avoid the existing wellbore.

Attached is a map of the MCA Unit area surrounding the subject well and Form C-102 showing the well location and dedication.

Yours very truly,

Donald W. Johnson
PMB

RCB:srs
Attachments

**NEW MEXICO OIL CONSERVATION COMMISSION
WELL LOCATION AND ACREAGE DEDICATION PLAT**

Form C-102
Supersedes C-128
Effective 1-1-65

All distances must be from the outer boundaries of the Section

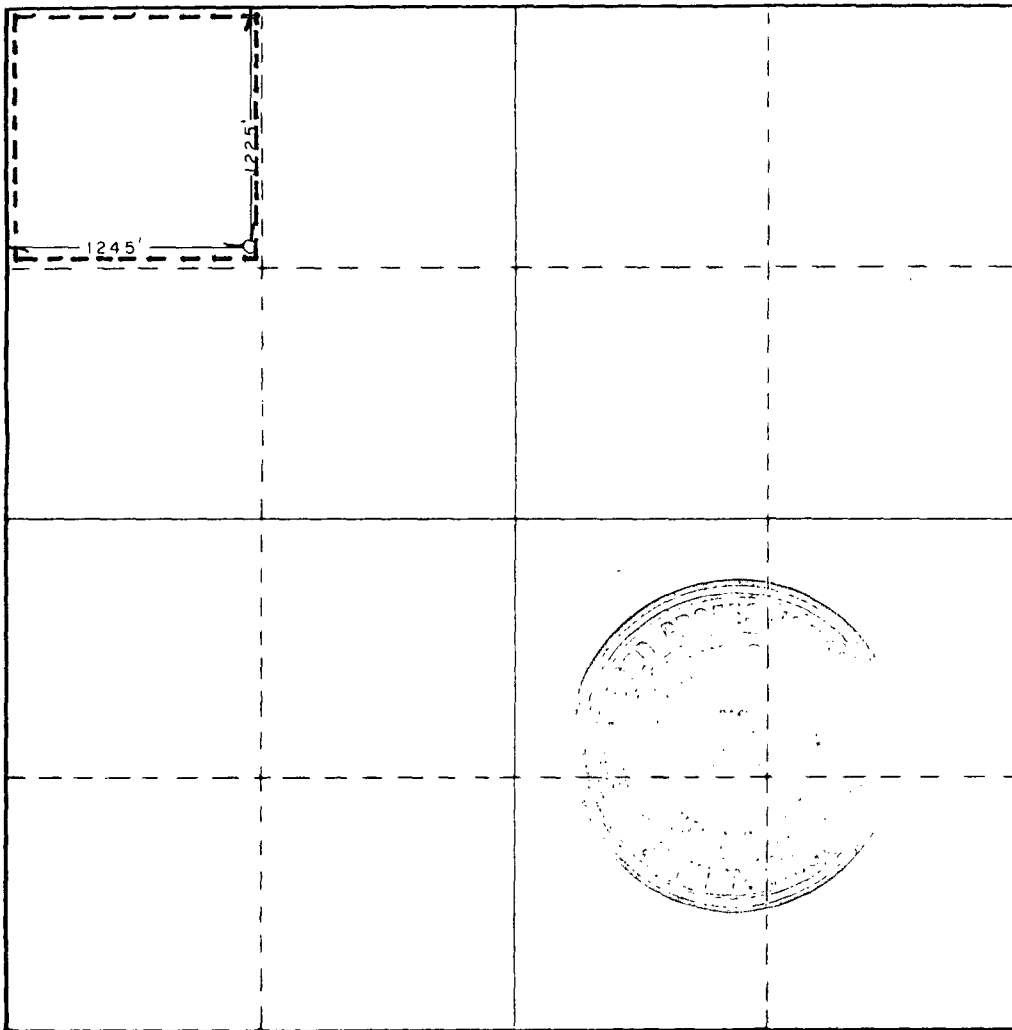
Operator CONOCO, INC.			Lease M. C. A. UNIT		Well No. 366
Unit Letter D	Section 26	Township 17 SOUTH	Range 32 EAST	County LEA	
Actual Footage Location of Well: <div style="display: flex; justify-content: space-between;"> 1225 feet from the NORTH line and 1245 feet from the WEST line </div>					
Ground Level Elev. 3972.3'	Producing Formation Grayburg		Pool Maljamar G/SA		Dedicated Acreage: 40 Acres

1. Outline the acreage dedicated to the subject well by colored pencil or hachure marks on the plat below.
2. If more than one lease is dedicated to the well, outline each and identify the ownership thereof (both as to working interest and royalty).
3. If more than one lease of different ownership is dedicated to the well, have the interests of all owners been consolidated by communitization, unitization, force-pooling, etc?

☐ Yes ☐ No If answer is "yes," type of consolidation _____

If answer is "no," list the owners and tract descriptions which have actually been consolidated. (Use reverse side of this form if necessary.) _____

No allowable will be assigned to the well until all interests have been consolidated (by communitization, unitization, forced-pooling, or otherwise) or until a non-standard unit, eliminating such interests, has been approved by the Commission.



CERTIFICATION

I hereby certify that the information contained herein is true and complete to the best of my knowledge and belief.

Name *John W. West*
 Position *Administrative Supervisor*
 Company *Conoco Inc.*
 Date *8-28-85*

I hereby certify that the well location shown on this plat was plotted from field notes of actual surveys made by me or under my supervision, and that the same is true and correct to the best of my knowledge and belief.

Date Surveyed
AUGUST 2, 1985
 Registered Professional Engineer
and/or Land Surveyor

John W. West
 Certificate No. **JOHN W. WEST, 676**
RONALD J. EIDSON, 3239

