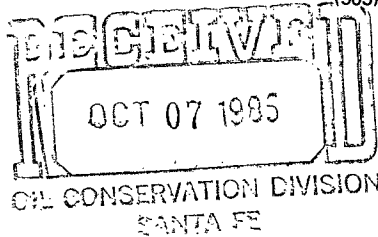




Donald W. Johnson
Division Manager
Production Department
Hobbs Division
North American Production

Conoco Inc.
P.O. Box 460
726 East Michigan
Hobbs, NM 88240
(505) 393-4141



October 1, 1985

State of New Mexico
Energy and Minerals Department
Oil Conservation Division
P.O. Box 2088
Santa Fe, NM 87501

ATTENTION: Mr. Dick Stamets, Director

Gentlemen:

Amendment to Approved Unorthodox Location - MCA Unit No. 366, 1175' FNL and 1245' FWL of Section 26, T17S, R32E, Lea County, New Mexico, Maljamar G/SA Pool

CONOCO INC. respectfully requests administrative approval to amend the approved unorthodox location that was received on September 10, 1985. The previously approved unorthodox location was ~~1245'~~^{1245'} FWL, Section 26, T17S, R32E, Lea County, New Mexico. The new unorthodox location is 1175' FNL and 1245' FWL of Section 26, T17S, R32E, Lea County, New Mexico. The request for the amendment is required to avoid existing powerlines.

Attached is a sketch of the proposed location and the power lines involved as well as Form C-102 showing the well location and dedication.

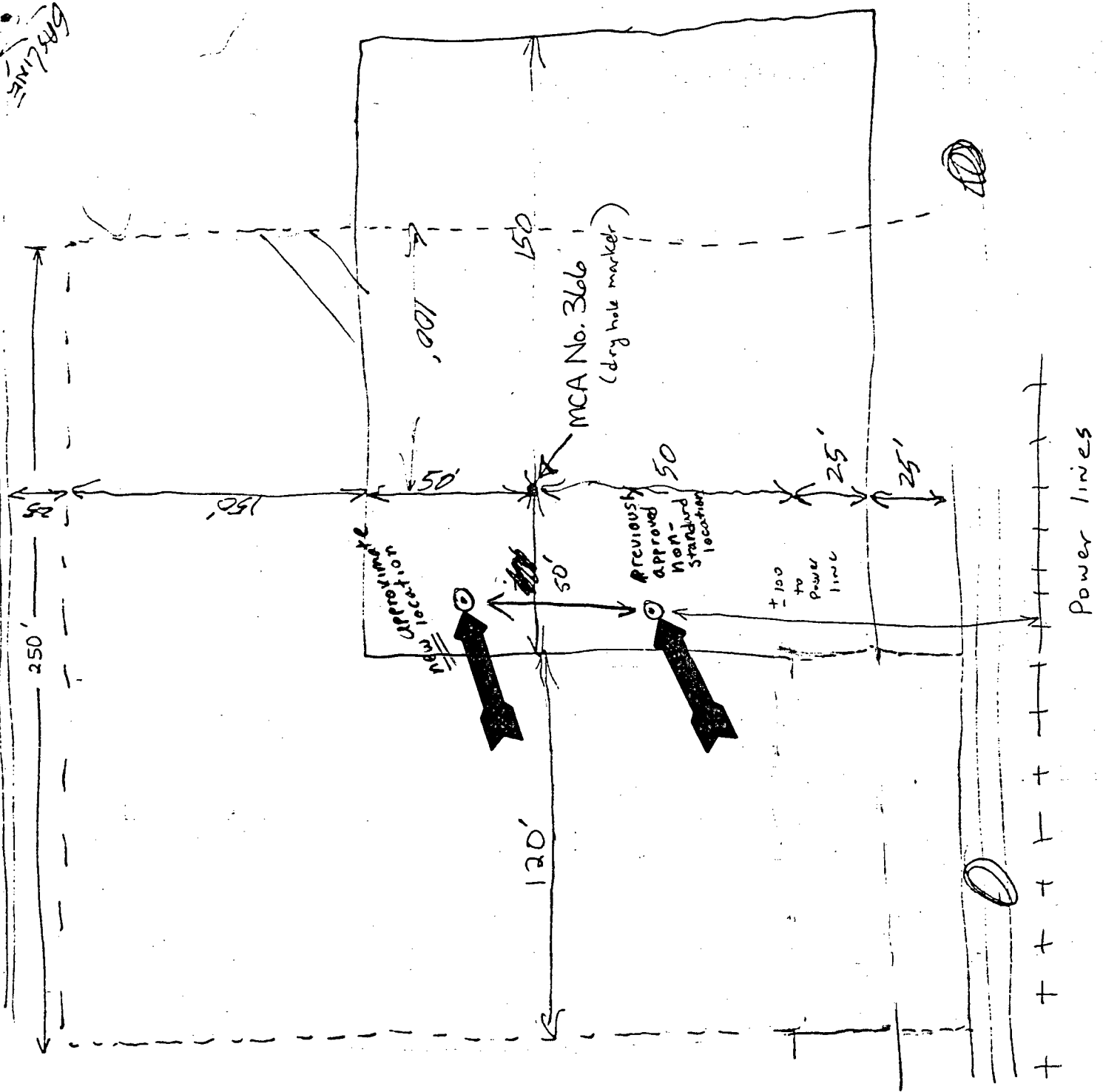
Yours very truly,

Donald W. Johnson
PWB

ELK:mc

↑ North

Hill



**NEW MEXICO OIL CONSERVATION COMMISSION
WELL LOCATION AND ACREAGE DEDICATION PLAT**

Form C-102
Supersedes C-128
Effective 1-1-65

All distances must be from the outer boundaries of the Section.

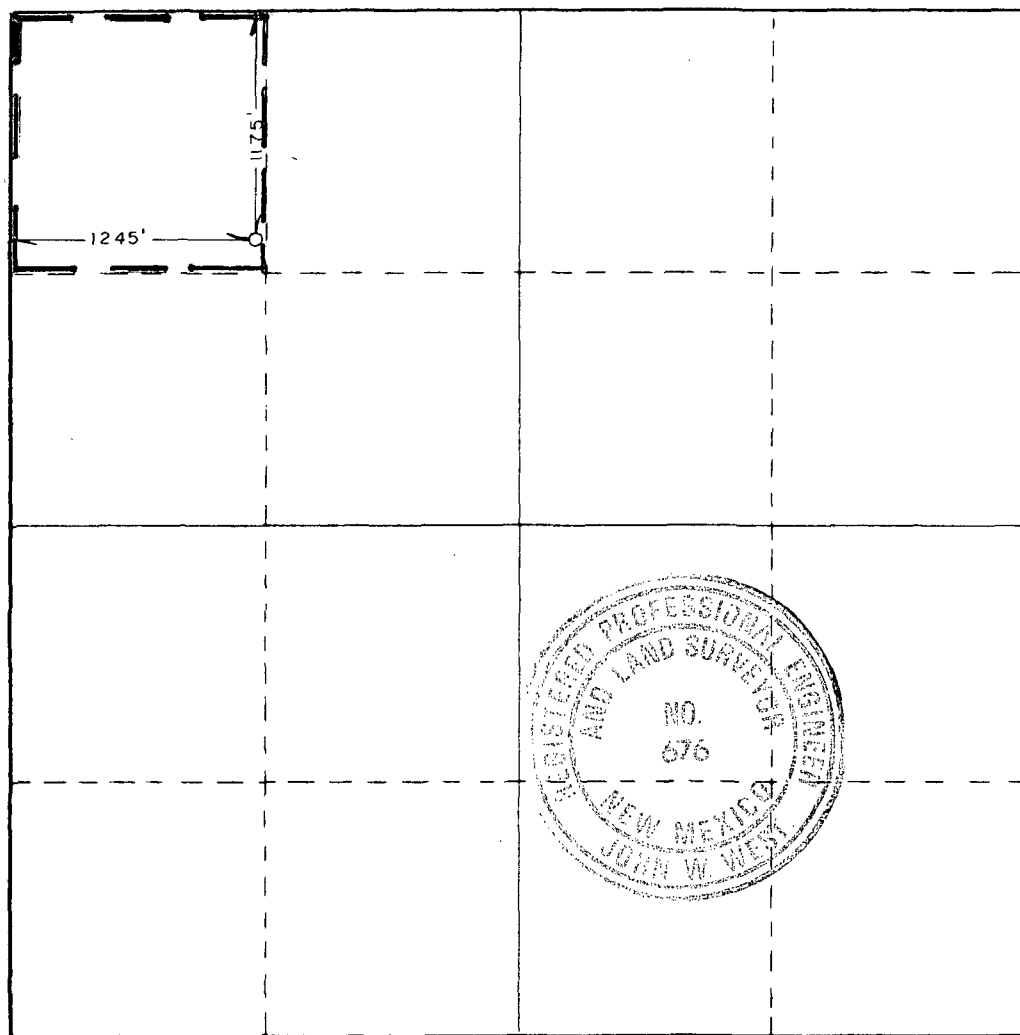
Operator CONOCO, INC.			Lease M. C. A. UNIT			Well No. 366		
Unit Letter D	Section 26	Township 17 SOUTH	Range 32 EAST	County LEA				
Actual Footage Location of Well: <div style="display: flex; justify-content: space-between;"> 1175 feet from the NORTH line and 1245 feet from the WEST line </div>								
Ground Level Elev. 3972.3'	Producing Formation Grayburg			Pool Maljamar G/SA			Dedicated Acreage: 40 Acres	

1. Outline the acreage dedicated to the subject well by colored pencil or hachure marks on the plat below.
2. If more than one lease is dedicated to the well, outline each and identify the ownership thereof (both as to working interest and royalty).
3. If more than one lease of different ownership is dedicated to the well, have the interests of all owners been consolidated by communitization, unitization, force-pooling, etc?

☐ Yes ☐ No If answer is "yes," type of consolidation _____

If answer is "no," list the owners and tract descriptions which have actually been consolidated. (Use reverse side of this form if necessary.) _____

No allowable will be assigned to the well until all interests have been consolidated (by communitization, unitization, forced-pooling, or otherwise) or until a non-standard unit, eliminating such interests, has been approved by the Commission.



CERTIFICATION

I hereby certify that the information contained herein is true and complete to the best of my knowledge and belief.

Name Kevin L. Vogel
 Position Administrative Supervisor
 Company CONOCO Inc.

Date 10-2-85

I hereby certify that the well location shown on this plat was plotted from field notes of actual surveys made by me or under my supervision, and that the same is true and correct to the best of my knowledge and belief.

Date Surveyed
SEPTEMBER 7, 1985

Registered Professional Engineer
and/or Land Surveyor

John W. West
 Certificate No. **JOHN W. WEST, 676**

RONALD J. EIDSON, 3239

