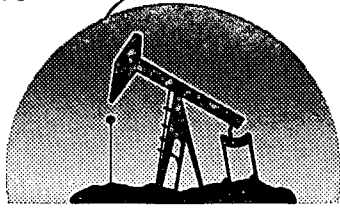


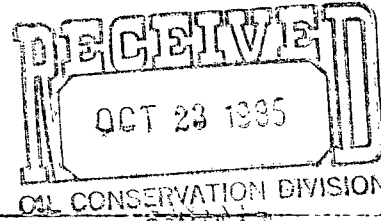
Release Immediately

W By DRC



marbob

energy corporation



October 21, 1985

Richard L. Stamets
Director
Oil Conservation Division
P. O. Box 2088
Santa Fe, New Mexico 87501
Attention: Gilbert Quintana

NSC-2179
RULE-R-7808
(3)

Dear Mr. Stamets:

*Grayburg Jackson Seven Lines Queen Grayburg
San Andres Pool.*

The purpose of this letter is to request administrative approval without notice and hearing of unorthodox well locations pursuant to Order R-7808 of the New Mexico Oil Conservation Division. The following is a list of the footage locations for which administrative approval of unorthodox well locations are sought:

G-J WEST CO-OP UNIT NO. 74
2310 FNL 1295 FEL
Section 28, T-17S, R-29E
Eddy County, New Mexico

✓
10-12-85
Do not release until
11-12-85

M. DODD "B" NO. 54
75 FNL 1295 FWL
Section 14, T-17S, R-29E
Eddy County, New Mexico

✓
40 Acres
NW1/4 NW1/4

M. DODD "B" NO. 55
1295 FSL 1980 FWL
Section 11, T-17S, R-29E
Eddy County, New Mexico

✓
40 Acres
SE1/4 SW1/4

M. DODD "B" NO. 56
1345 FSL 990 FWL
Section 11, T-17S, R-29E
Eddy County, New Mexico

✓
40 Acres
NW1/4 SW1/4

TOM BOYD DODD NO. 7
330 FSL 1345 FEL
Section 11, T-17S, R-29E
Eddy County, New Mexico

✓
40 Acres
SW1/4 SE1/4

M. DODD "A" NO. 37
1345 FSL 330 FWL
Section 14, T-17S, R-29E
Eddy County, New Mexico

✓
40 Acres
NW1/4 SW1/4

The wells will be completed in the Grayburg San Andres formation in the Grayburg Jackson Seven Rivers Queen Grayburg San Andres Pool. Note that these locations are no closer than 330 feet to an outer boundary of a lease, or in the case of a unit, unitized area, nor closer than 10 feet to any quarter quarter section line or subdivision inner boundary.

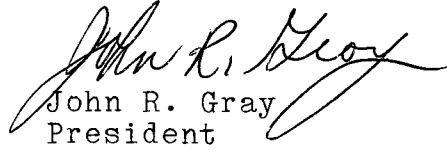
Attached to this application as Exhibits A through L are the following:

- A. Well location and Acreage
Dedication Plats (Forms C-102)
filed with the Artesia office
of the Oil Conservation
Division (Exhibits "A"-"F").
- B. A plat showing the proposed
unorthodox locations, the
respective proration units, and
the offsetting proration units
including ownership of the
offsetting proration units in
the Grayburg San Andres
formation in the Grayburg
Jackson Seven Rivers Queen
Grayburg San Andres Pool
(Exhibit "G").
- C. Copies of letters of
notification sent to operators
or owners of proration units
offsetting proration units
containing the proposed
unorthodox locations in the
Grayburg Jackson Seven Rivers
Queen Grayburg San Andres Pool
(Exhibit "H").

The letter attached as Exhibit "H" has been sent to the offset operator by certified mail and he has been requested to notify you if he has any objection. Note that with the exception of the operator notified Marbob Energy Corporation is the operator of all offsetting proration units in the Grayburg San Andres formation of the Grayburg Jackson Seven Rivers Queen Grayburg San Andres Pool.

Thank-you very much for your help in this matter. Should you have any further questions or be in need of any additional information, please contact Ron Head or Raye P. Miller.

Sincerely,


John R. Gray
President

JRG/rsr

Exhibit "B"

NEW MEXICO OIL CONSERVATION COMMISSION
WELL LOCATION AND ACREAGE DEDICATION PLAT

Form C-102
Supersedes C-128
Effective 1-1-65

All distances must be from the outer boundaries of the Section.

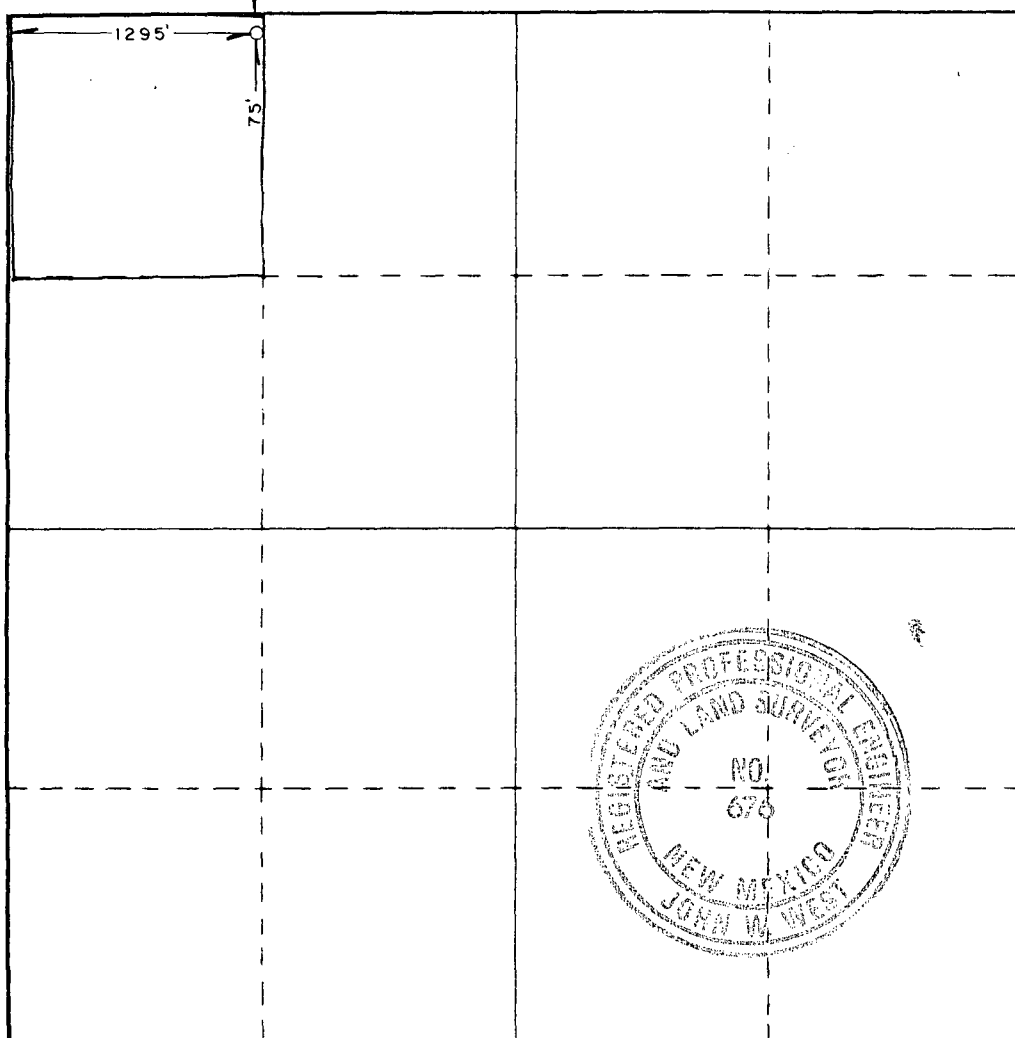
Operator MARBOB ENERGY CORP.		Lease M. DODD "B"		Well No. 54
Unit Letter D	Section 14	Township 17 SOUTH	Range 29 EAST	County EDDY
Actual Footage Location of Well: 75 feet from the NORTH line and 1295 feet from the WEST line				
Ground Level Elev. 3616.2'	Producing Formation San Andres	Pool Grbg Jackson SR Qn Grbg SA	Dedicated Acreage: 40 Acres	

1. Outline the acreage dedicated to the subject well by colored pencil or hatchure marks on the plat below.
2. If more than one lease is dedicated to the well, outline each and identify the ownership thereof (both as to working interest and royalty).
3. If more than one lease of different ownership is dedicated to the well, have the interests of all owners been consolidated by communitization, unitization, force-pooling, etc?

☐ Yes ☐ No If answer is "yes," type of consolidation _____

If answer is "no," list the owners and tract descriptions which have actually been consolidated. (Use reverse side of this form if necessary.) _____

No allowable will be assigned to the well until all interests have been consolidated (by communitization, unitization, forced-pooling, or otherwise) or until a non-standard unit, eliminating such interests, has been approved by the Commission.



CERTIFICATION

I hereby certify that the information contained herein is true and complete to the best of my knowledge and belief.

DeNette Morriss

Name

DeNette Morriss

Position

Production Clerk

Company

Marbob Energy Corporation

Date

10/14/85

I hereby certify that the well location shown on this plat was plotted from field notes of actual surveys made by me or under my supervision, and that the same is true and correct to the best of my knowledge and belief.

Date Surveyed

SEPTEMBER 12, 1985

Registered Professional Engineer and/or Land Surveyor

John W. West

Certificate No. **JOHN W. WEST, 676**
RONALD J. EIDSON, 3239

Exhibit "C"
NEW MEXICO OIL CONSERVATION COMMISSION
WELL LOCATION AND ACREAGE DEDICATION PLAT

Form C-102
Supersedes C-128
Effective 1-1-65

All distances must be from the outer boundaries of the Section.

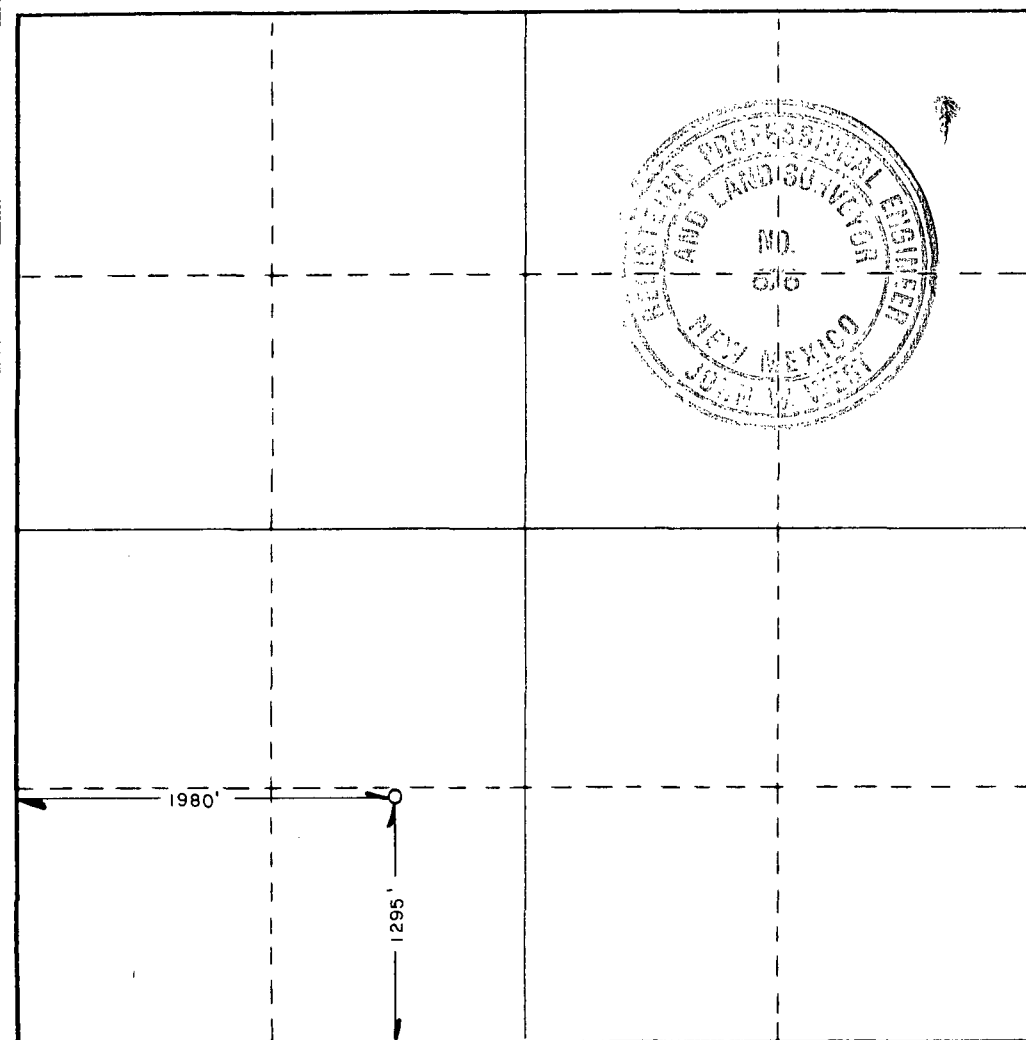
Operator MARBOB ENERGY CORP.			Lease M. DODD B		Well No. 55
Unit Letter N	Section 11	Township 17 SOUTH	Range 29 EAST	County EDDY	
Actual Footage Location of Well: 1295 feet from the SOUTH line and 1980 feet from the WEST line					
Ground Level Elev. 3630.2	Producing Formation		Pool		Dedicated Acreage: Acres

1. Outline the acreage dedicated to the subject well by colored pencil or hachure marks on the plat below.
2. If more than one lease is dedicated to the well, outline each and identify the ownership thereof (both as to working interest and royalty).
3. If more than one lease of different ownership is dedicated to the well, have the interests of all owners been consolidated by communitization, unitization, force-pooling, etc?

☐ Yes ☐ No If answer is "yes," type of consolidation _____

If answer is "no," list the owners and tract descriptions which have actually been consolidated. (Use reverse side of this form if necessary.) _____

No allowable will be assigned to the well until all interests have been consolidated (by communitization, unitization, forced-pooling, or otherwise) or until a non-standard unit, eliminating such interests, has been approved by the Commission.



CERTIFICATION

I hereby certify that the information contained herein is true and complete to the best of my knowledge and belief.

Name

Position

Company

Date

I hereby certify that the well location shown on this plat was plotted from field notes of actual surveys made by me or under my supervision, and that the same is true and correct to the best of my knowledge and belief.

Date Surveyed

OCTOBER 17, 1985

Registered Professional Engineer
and/or Land Surveyor

John W. West
Certificate No. **JOHN W. WEST, 676**
RONALD J. EIDSON, 3239

Exhibit "D"
NEW MEXICO OIL CONSERVATION COMMISSION
WELL LOCATION AND ACREAGE DEDICATION PLAT

Form C-102
Supersedes C-128
Effective 1-1-65

All distances must be from the outer boundaries of the Section.

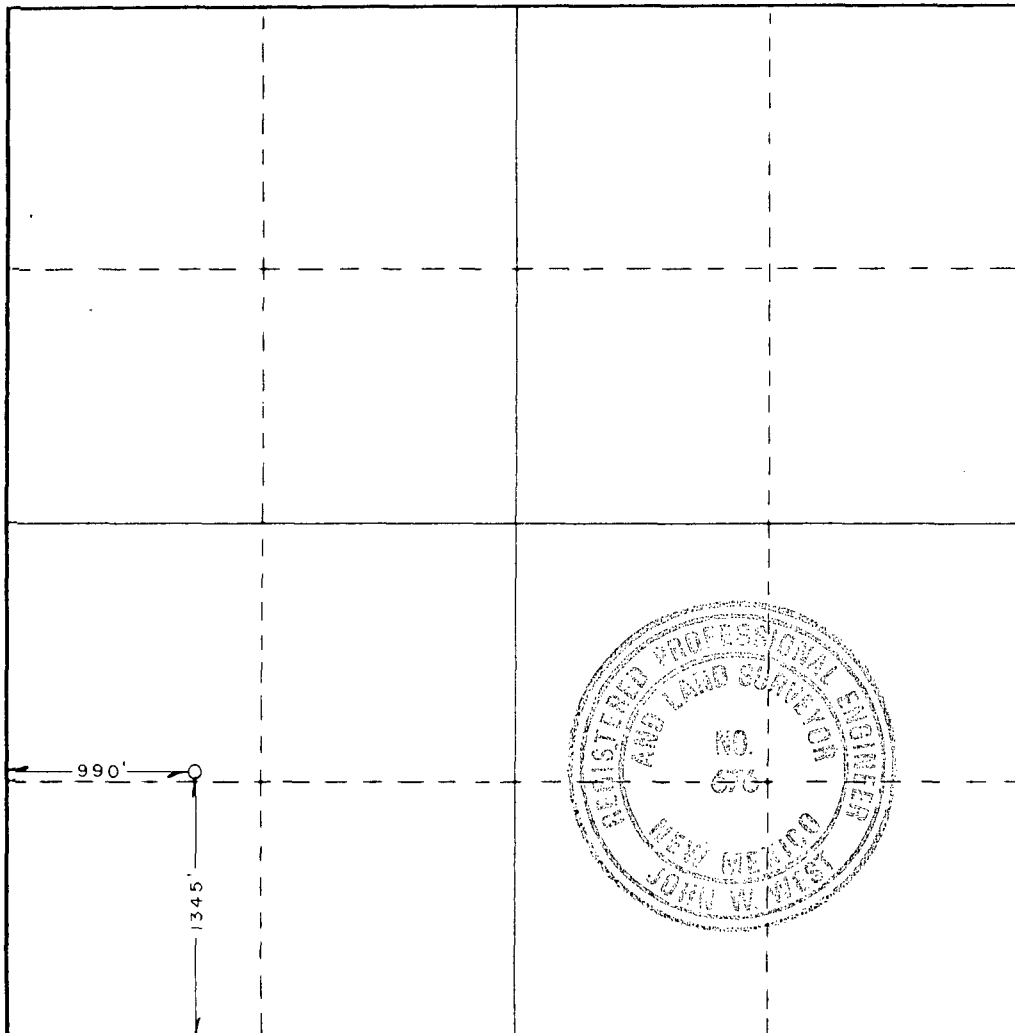
Operator MARBOB ENERGY CORP.		Lease M. DODD B		Well No. 56
Unit Letter L	Section 11	Township 17 SOUTH	Range 29 EAST	County EDDY
Actual Footage Location of Well: 990 feet from the WEST line and 1345 feet from the SOUTH line				
Ground Level Elev. 3625.9'	Producing Formation	Pool	Dedicated Acreage: Acres	

1. Outline the acreage dedicated to the subject well by colored pencil or hachure marks on the plat below.
2. If more than one lease is dedicated to the well, outline each and identify the ownership thereof (both as to working interest and royalty).
3. If more than one lease of different ownership is dedicated to the well, have the interests of all owners been consolidated by communitization, unitization, force-pooling, etc?

☐ Yes ☐ No If answer is "yes," type of consolidation _____

If answer is "no," list the owners and tract descriptions which have actually been consolidated. (Use reverse side of this form if necessary.) _____

No allowable will be assigned to the well until all interests have been consolidated (by communitization, unitization, forced-pooling, or otherwise) or until a non-standard unit, eliminating such interests, has been approved by the Commission.



CERTIFICATION

I hereby certify that the information contained herein is true and complete to the best of my knowledge and belief.

Name

Position

Company

Date

I hereby certify that the well location shown on this plat was plotted from field notes of actual surveys made by me or under my supervision, and that the same is true and correct to the best of my knowledge and belief.

Date Surveyed

SEPTEMBER 27, 1985

Registered Professional Engineer
and/or Land Surveyor

John W. West

Certificate No. **JOHN W. WEST,** 676
RONALD J. EIDSON, 3239

Exhibit "E"

NEW MEXICO OIL CONSERVATION COMMISSION
WELL LOCATION AND ACREAGE DEDICATION PLATForm C-102
Supersedes C-128
Effective 1-1-65

All distances must be from the outer boundaries of the Section.

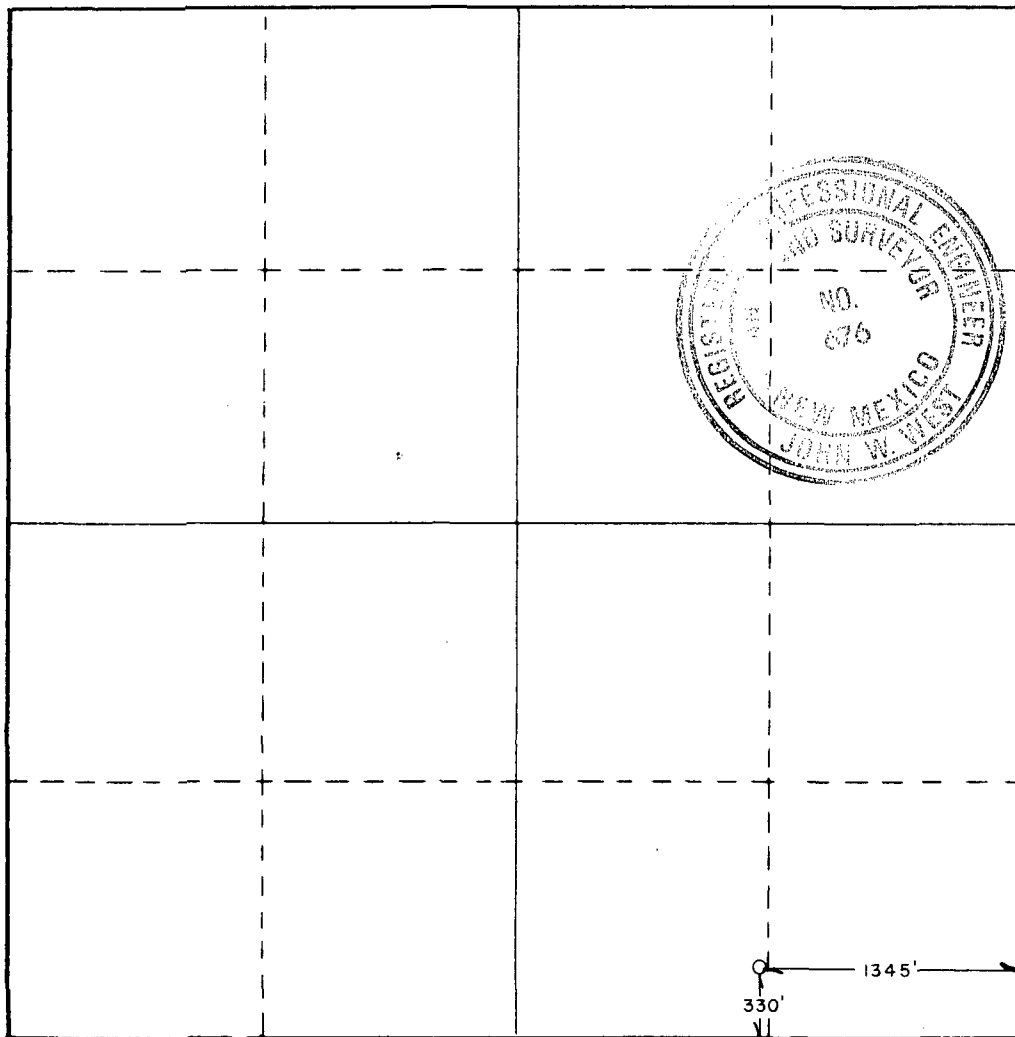
Operator MARBOB ENERGY CORP.		Lease BOYD DODD		Well No. 7
Unit Letter O	Section 11	Township 17 SOUTH	Range 29 EAST	County EDDY
Actual Footage Location of Well: 330 feet from the SOUTH line and 1345 feet from the EAST line				
Ground Level Elev. 3635.2'	Producing Formation	Pool	Dedicated Acreage: Acres	

1. Outline the acreage dedicated to the subject well by colored pencil or hachure marks on the plat below.
2. If more than one lease is dedicated to the well, outline each and identify the ownership thereof (both as to working interest and royalty).
3. If more than one lease of different ownership is dedicated to the well, have the interests of all owners been consolidated by communitization, unitization, force-pooling, etc?

☐ Yes ☐ No If answer is "yes," type of consolidation _____

If answer is "no," list the owners and tract descriptions which have actually been consolidated. (Use reverse side of this form if necessary.) _____

No allowable will be assigned to the well until all interests have been consolidated (by communitization, unitization, forced-pooling, or otherwise) or until a non-standard unit, eliminating such interests, has been approved by the Commission.



CERTIFICATION

I hereby certify that the information contained herein is true and complete to the best of my knowledge and belief.

Name

Position

Company

Date

I hereby certify that the well location shown on this plat was plotted from field notes of actual surveys made by me or under my supervision, and that the same is true and correct to the best of my knowledge and belief.

Date Surveyed
OCTOBER 10, 1985

Registered Professional Engineer
and/or Land Surveyor

John W. West

Certificate No. JOHN W. WEST, 676
RONALD J. EIDSON, 3239

0 330 660 990 1320 1650 1980 2310 2640 2970 3300 3630 3960 4290 4620 4950 5280 5610 5940 6270 6600 6930 7260 7590 7920 8250 8580 8910 9240 9570 9900

Exhibit "F"
NEW MEXICO OIL CONSERVATION COMMISSION
WELL LOCATION AND ACREAGE DEDICATION PLAT

Form C-102
Supersedes C-128
Effective 1-1-65

All distances must be from the outer boundaries of the Section.

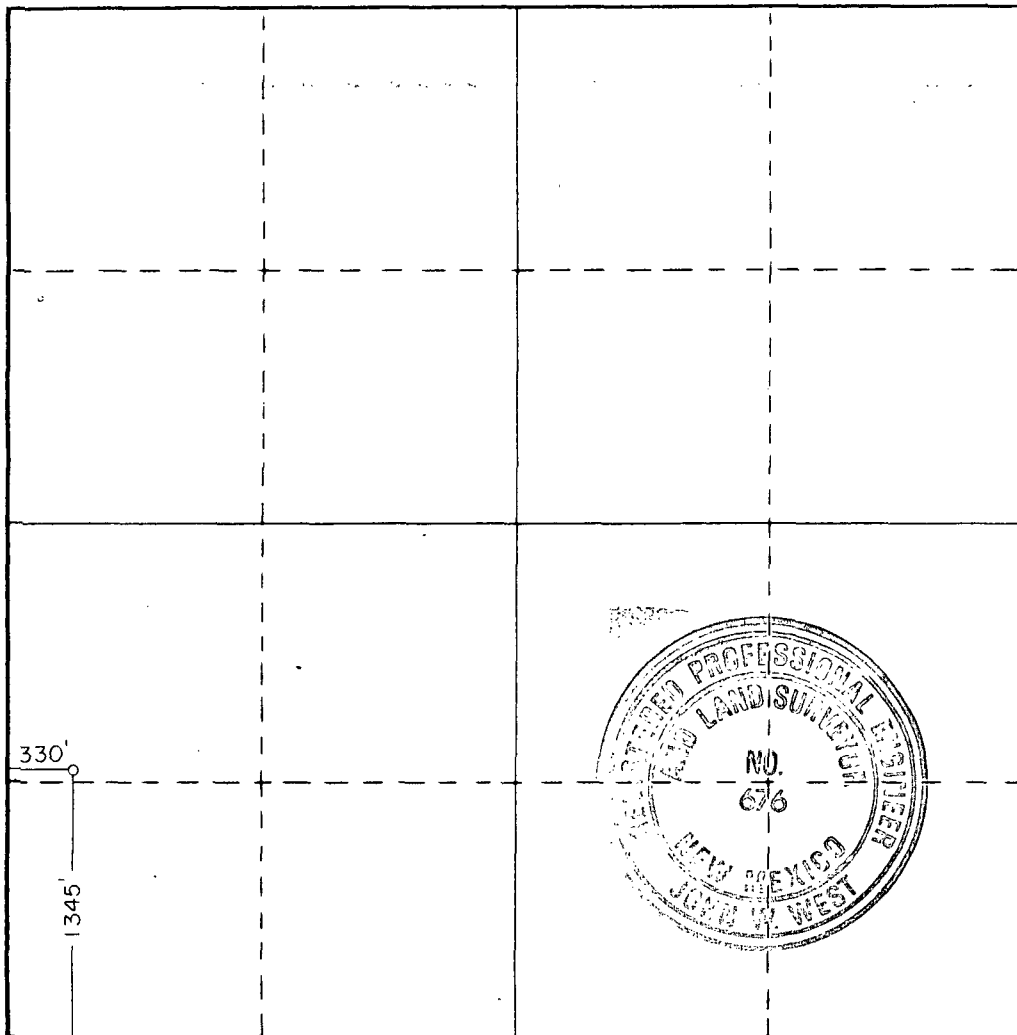
Operator MARBOB ENERGY CORP.		Lease M DODD "A"		Well No. 37	
Unit Letter L	Section 14	Township 17 SOUTH	Range 29 EAST	County EDDY	
Actual Footage Location of Well: 1345 feet from the SOUTH line and 330 feet from the WEST line					
Ground Level Elev. 3596.3	Producing Formation		Pool		Dedicated Acreage: Acres

1. Outline the acreage dedicated to the subject well by colored pencil or hachure marks on the plat below.
2. If more than one lease is dedicated to the well, outline each and identify the ownership thereof (both as to working interest and royalty).
3. If more than one lease of different ownership is dedicated to the well, have the interests of all owners been consolidated by communitization, unitization, force-pooling, etc?

☐ Yes ☐ No If answer is "yes," type of consolidation _____

If answer is "no," list the owners and tract descriptions which have actually been consolidated. (Use reverse side of this form if necessary.) _____

No allowable will be assigned to the well until all interests have been consolidated (by communitization, unitization, forced-pooling, or otherwise) or until a non-standard unit, eliminating such interests, has been approved by the Commission.



CERTIFICATION

I hereby certify that the information contained herein is true and complete to the best of my knowledge and belief.

Name

Position

Company

Date

I hereby certify that the well location shown on this plat was plotted from field notes of actual surveys made by me or under my supervision, and that the same is true and correct to the best of my knowledge and belief.

Date Surveyed

JULY 26, 1985

Registered Professional Engineer
and/or Land Surveyor

Certificate No. **JOHN W. WEST, 676**

RONALD J. EIDSON, 3239

