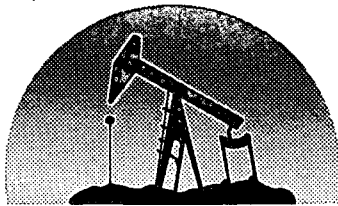
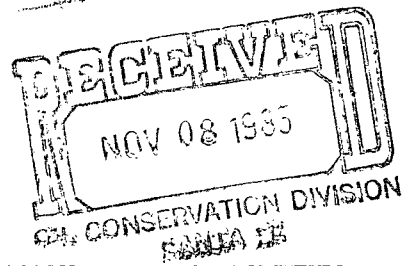


Release Immediately
No offsets.



marbob

energy corporation



By DCC

3 wells
November 6, 1985

NSL-2183

RULE-~~NSL-2183~~
#3 R-7808

Richard L. Stamets
Director
Oil Conservation Division
P. O. Box 2088
Santa Fe, New Mexico 87501
Attention: David Catanach

Dear Mr. Stamets:

The purpose of this letter is to request administrative approval without notice and hearing of unorthodox well locations pursuant to Order R-7808 of the New Mexico Oil Conservation Division. The following is a list of the footage locations for which administrative approval of unorthodox well locations are sought:

M. DODD "B" NO. 58
2310 FSL 1295 FWL
Section 11, T-17S, R-29E
Eddy County, New Mexico

40 Acres dedication
NW1/4 SW1/4 Sec 11

G. J. WEST CO-OP UNIT NO. 78
1345 FSL 660 FEL
Section 21, T-17S, R-29E
Eddy County, New Mexico

40 Acres ded.
NE1/4 SE1/4 Sec 21

G. J. WEST CO-OP UNIT NO. 73
131 FSL 2029 FEL
Section 21, T-17S, R-29E
Eddy County, New Mexico

40 Acres ded.
SW1/4 SE1/4 Sec 21

The wells will be completed in the Grayburg San Andres formation in the Grayburg Jackson Seven Rivers Queen Grayburg San Andres Pool. Note that these locations are no closer than 330 feet to an outer boundary of a lease, or in the case of a unit, unitized area, nor closer than 10 feet to any quarter quarter section line or subdivision inner boundary.

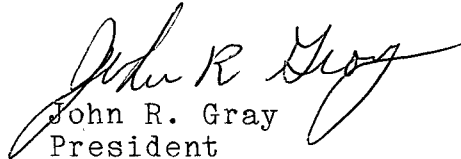
Attached to this application as Exhibits A through D are the following:

- A. Well location and Acreage Dedication Plats (Forms C-102) filed with the Artesia office of the Oil Conservation Division (Exhibits "A"-"C").
- B. A plat showing the proposed unorthodox locations, the respective proration units, and the offsetting proration units including ownership of the offsetting proration units in the Grayburg San Andres formation in the Grayburg Jackson Seven Rivers Queen Grayburg San Andres Pool (Exhibit "D").

Note that Marbob Energy Corporation is the operator of all offsetting proration units in the Grayburg San Andres formation of the Grayburg Jackson Seven Rivers Queen Grayburg San Andres Pool.

Thank-you very much for your help in this matter. Should you have any further questions or be in need of any additional information, please contact Ron Head or Raye P. Miller.

Sincerely,


John R. Gray
President

JRG/rsr

Exhibit "A"
NEW MEXICO OIL CONSERVATION COMMISSION
WELL LOCATION AND ACREAGE DEDICATION PLAT

Form C-102
Supersedes C-128
Effective 1-1-65

All distances must be from the outer boundaries of the Section.

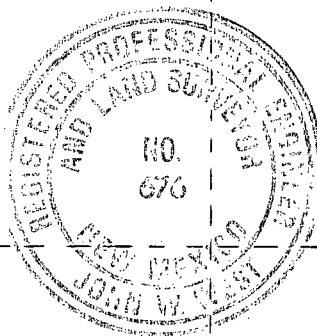
Operator MARBOB ENERGY CORP.		Lease M. DODD "B"		Well No. 58
Unit Letter L	Section 11	Township 17 SOUTH	Range 29 EAST	County EDDY
Actual Footage Location of Well: 2310 feet from the SOUTH line and 1295 feet from the WEST line				
Ground Level Elev. 3626.4'	Producing Formation	Pool	Dedicated Acreage: Acres	

1. Outline the acreage dedicated to the subject well by colored pencil or hachure marks on the plat below.
2. If more than one lease is dedicated to the well, outline each and identify the ownership thereof (both as to working interest and royalty).
3. If more than one lease of different ownership is dedicated to the well, have the interests of all owners been consolidated by communitization, unitization, force-pooling, etc?

☐ Yes ☐ No If answer is "yes," type of consolidation _____

If answer is "no," list the owners and tract descriptions which have actually been consolidated. (Use reverse side of this form if necessary.) _____

No allowable will be assigned to the well until all interests have been consolidated (by communitization, unitization, forced-pooling, or otherwise) or until a non-standard unit, eliminating such interests, has been approved by the Commission.



CERTIFICATION

I hereby certify that the information contained herein is true and complete to the best of my knowledge and belief.

Name

Position

Company

Date

I hereby certify that the well location shown on this plat was plotted from field notes of actual surveys made by me or under my supervision, and that the same is true and correct to the best of my knowledge and belief.

Date Surveyed
OCTOBER 25, 1985

Registered Professional Engineer
and/or Land Surveyor

Certificate No. **JOHN W. WEST, 676**
RONALD J. EIDSON, 3239

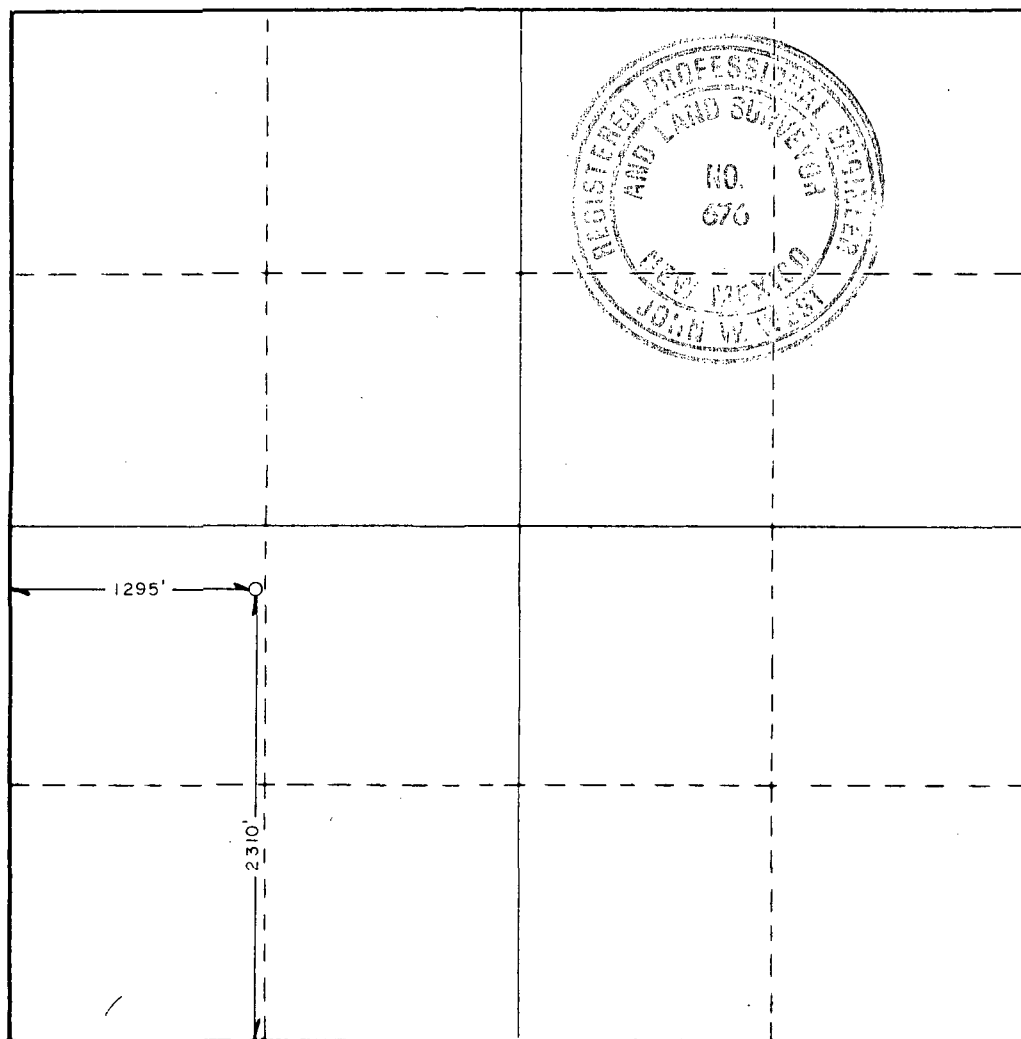


Exhibit "B"
NEW MEXICO OIL CONSERVATION COMMISSION
WELL LOCATION AND ACREAGE DEDICATION PLAT

Form C-102
Supersedes C-128
Effective 1-1-65

All distances must be from the outer boundaries of the Section.

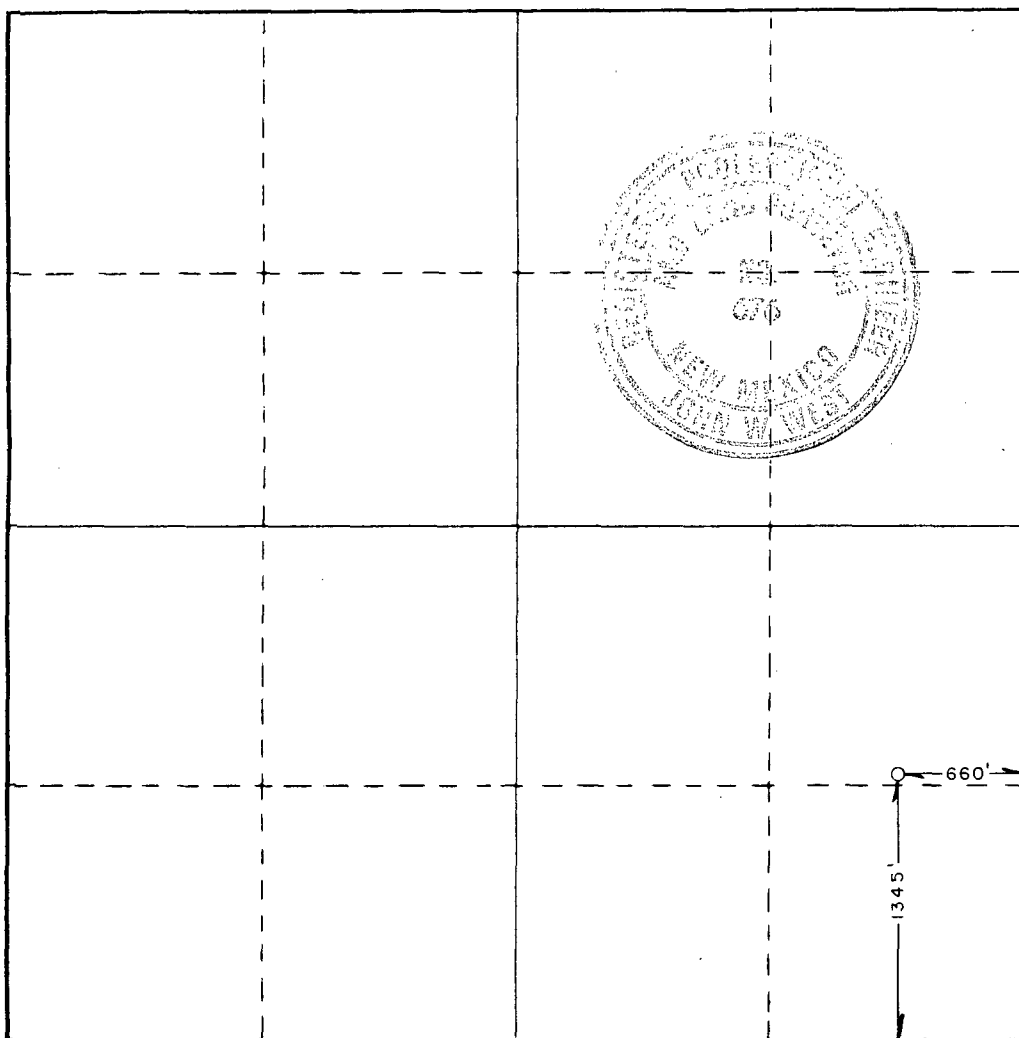
Operator MARBOB ENERGY CORP.		Lease G.J. WEST		Well No. 78
Unit Letter I	Section 21	Township 17 SOUTH	Range 29 EAST	County EDDY
Actual Footage Location of Well: 660 feet from the EAST line and 1345 feet from the SOUTH line				
Ground Level Elev. 3554.6'	Producing Formation		Pool	Dedicated Acreage: Acres

1. Outline the acreage dedicated to the subject well by colored pencil or hachure marks on the plat below.
2. If more than one lease is dedicated to the well, outline each and identify the ownership thereof (both as to working interest and royalty).
3. If more than one lease of different ownership is dedicated to the well, have the interests of all owners been consolidated by communitization, unitization, force-pooling, etc?

☐ Yes ☐ No If answer is "yes," type of consolidation _____

If answer is "no," list the owners and tract descriptions which have actually been consolidated. (Use reverse side of this form if necessary.) _____

No allowable will be assigned to the well until all interests have been consolidated (by communitization, unitization, forced-pooling, or otherwise) or until a non-standard unit, eliminating such interests, has been approved by the Commission.



CERTIFICATION

I hereby certify that the information contained herein is true and complete to the best of my knowledge and belief.

Name

Position

Company

Date

I hereby certify that the well location shown on this plat was plotted from field notes of actual surveys made by me or under my supervision, and that the same is true and correct to the best of my knowledge and belief.

Date Surveyed
OCTOBER 29, 1985

Registered Professional Engineer
and/or Land Surveyor

Certificate No. **JOHN W. WEST, 676**
RONALD J. EIDSON, 3239

**NEW MEXICO OIL CONSERVATION COMMISSION
WELL LOCATION AND ACREAGE DEDICATION PLAT**

Form C-102
Supersedes C-128
Effective 1-1-65

All distances must be from the outer boundaries of the Section.

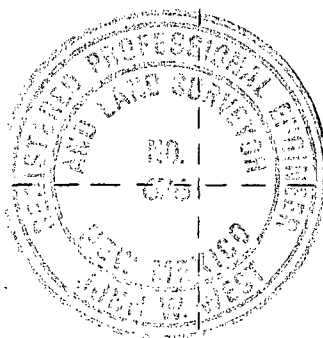
Operator MARBOB ENERGY CORP.		Lease G. J. WEST		Well No. 73
Unit Letter 0	Section 21	Township 17 SOUTH	Range 29 EAST	County EDDY
Actual Footage Location of Well: 131 feet from the SOUTH line and 2029 feet from the EAST line				
Ground Level Elev. 3570.7'	Producing Formation		Pool	Dedicated Acreage: Acres

1. Outline the acreage dedicated to the subject well by colored pencil or hachure marks on the plat below.
2. If more than one lease is dedicated to the well, outline each and identify the ownership thereof (both as to working interest and royalty).
3. If more than one lease of different ownership is dedicated to the well, have the interests of all owners been consolidated by communitization, unitization, force-pooling, etc?

☐ Yes ☐ No If answer is "yes," type of consolidation _____

If answer is "no," list the owners and tract descriptions which have actually been consolidated. (Use reverse side of this form if necessary.) _____

No allowable will be assigned to the well until all interests have been consolidated (by communitization, unitization, forced-pooling, or otherwise) or until a non-standard unit, eliminating such interests, has been approved by the Commission.



CERTIFICATION

I hereby certify that the information contained herein is true and complete to the best of my knowledge and belief.

Name

Position

Company

Date

I hereby certify that the well location shown on this plat was plotted from field notes of actual surveys made by me or under my supervision, and that the same is true and correct to the best of my knowledge and belief.

Date Surveyed
OCTOBER 23, 1985

Registered Professional Engineer
and/or Land Surveyor

Certificate No. **JOHN W. WEST, 676**
RONALD J. EIDSON, 3239

