

*Release Immediately
no offset*

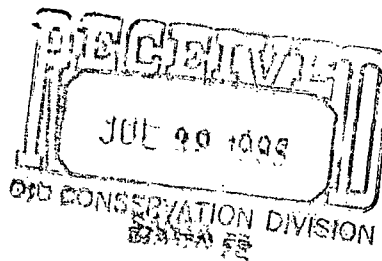
BY DEC

Mobil Producing Texas & New Mexico Inc.

July 25, 1985

*NSL-2121
RULE-104A(D)*

P.O. BOX 633
MIDLAND, TEXAS 79702



State of New Mexico
Energy & Minerals Dept.
Oil Conservation Division
State Land Office Building
P. O. Box 2088
Santa Fe, NM 87501

Attn: Mr. R. L. Stamets

160 Acre dedication - NE 1/4, Section 16.

7.01

UNORTHODOX WELL LOCATION
MOBIL PRODUCING TX. & N.M., INC.
LINDRITH "B" UNIT WELL #41
WEST LINDRITH - GALLUP/DAKOTA *Pool*
RIO ARriba COUNTY, New Mexico

*1105 FAL & 660 FEL Section 16,
Township 24 North, Range 3 West.*

Gentlemen:

Mobil Producing Tx. & N.M., Inc., respectfully requests authority to drill the subject well at an unorthodox location under the provisions of Rule 104 (F). This well is closer than 330 feet from the quarter-quarter line, but more than 330 from the lease line.

The first location selected for this well required a four month and \$40,000 archeological dig, and the second choice location was not acceptable to the surface owner. This unorthodox location is, therefore, a third compromise location. Mobil Producing Tx. & N.M., Inc. owns all offset proration units.

In support of this request, the following items are submitted in triplicate:

1. Form C-101- Application for Permit to Drill, Deepen or Plug Back.
2. Form C-102- Well location and acreage plat.
3. Certified plat showing all well locations and offset operators.

Oil Conservation Division
Unorthodox Well Location
Lindrith "B" Unit Well #41
July 25, 1985
Page-2-

A copy of this letter and the original documents are being sent to the BLM, as this location is on Federal lands.

Yours truly,

C. A. Stone

C. A. Stone
Regulatory Technician

CAS/mcs
Attachments

cc: NM Oil Conservation Division -
Aztec District Office
Bureau of Land Management

*Received District
Approval via E. B.
8-11-85*

UNITED STATES
DEPARTMENT OF THE INTERIOR
GEOLOGICAL SURVEY

APPLICATION FOR PERMIT TO DRILL, DEEPEN, OR PLUG BACK

1a. TYPE OF WORK

DRILL ☒DEEPEN ☐PLUG BACK ☐

b. TYPE OF WELL

OIL
WELL ☒GAS
WELL ☐

OTHER

SINGLE
ZONE ☒MULTIPLE
ZONE ☐

2. NAME OF OPERATOR

Mobil Producing TX. & N.M. Inc.

3. ADDRESS OF OPERATOR

P. O. Box 633, Midland, Texas 79702

4. LOCATION OF WELL (Report location clearly and in accordance with any State requirements.*)

At surface

1105' FNL; and 660' FEL of Sec. 16

At proposed prod. zone

Same as surface

14. DISTANCE IN MILES AND DIRECTION FROM NEAREST TOWN OR POST OFFICE*

6 miles west of Lindrith, NM

15. DISTANCE FROM PROPOSED*

LOCATION TO NEAREST
PROPERTY OR LEASE LINE, FT.
(Also to nearest drlg. unit line, if any)

4620'

16. NO. OF ACRES IN LEASE

2560

17. NO. OF ACRES ASSIGNED
TO THIS WELL

160 - 2 Wells

18. DISTANCE FROM PROPOSED LOCATION*
TO NEAREST WELL, DRILLING, COMPLETED,
OR APPLIED FOR, ON THIS LEASE, FT.

1360

19. PROPOSED DEPTH

7750

20. ROTARY OR CABLE TOOLS

Rotary

21. ELEVATIONS (Show whether DF, RT, GR, etc.)

6920' GL

22. APPROX. DATE WORK WILL START*

ASAP

23. PROPOSED CASING AND CEMENTING PROGRAM

SIZE OF HOLE	SIZE OF CASING	WEIGHT PER FOOT	SETTING DEPTH	QUANTITY OF CEMENT
12-1/4	9-5/8	36 H40	0-400	1. 240 Cu. ft. circ. to surface
8-3/4	5-1/2	15.5 K55	0-7750	2. (a) 410 Cu. ft. circ. to 6000' (b) 1360 Cu. ft. circ. from DV tool at 6000' to surface.

CEMENTING PROGRAM:

1. Class B + 2% CaCl₂ 2. (a) Class B + Pacesetter lite
(b) Class B

LOGGING PROGRAM:

CNL-FDC-CAL-GR TD - 3300
BHC-Sonic-CAL-GR TD - 3300
DIL-SP-GR TD - 3300

MUD PROGRAM:

Depth	Mud Type	Mud Wt.	Viscosity	Water Loss
0-400'	FW - Spud	8.5 - 9.0	32 - 38	N/C
400'-6000'	FW	8.4 - 9.4	28 - 35	N/C
6000'-7750'	FW - Gel	8.6 - 9.4	32 - 38	+20

BLOWOUT PREVENTOR PROGRAM - see attachment sent with previous application

IN ABOVE SPACE DESCRIBE PROPOSED PROGRAM: If proposal is to deepen or plug back, give data on present productive zone and proposed new productive zone. If proposal is to drill or deepen directionally, give pertinent data on subsurface locations and measured and true vertical depths. Give blowout preventer program, if any.

24.

SIGNED C.G. Stone for G.E. Tate TITLE Env. & Reg. Mgr.DATE 7-25-85

(This space for Federal or State office use)

PERMIT NO. _____

APPROVAL DATE _____

APPROVED BY _____

TITLE _____

DATE _____

CONDITIONS OF APPROVAL, IF ANY:

NEW MEXICO OIL CONSERVATION COMMISSION
WELL LOCATION AND ACREAGE DEDICATION PLAT

Form C-102
Supersedes C-128
Effective 1-1-65

All distances must be from the outer boundaries of the Section.

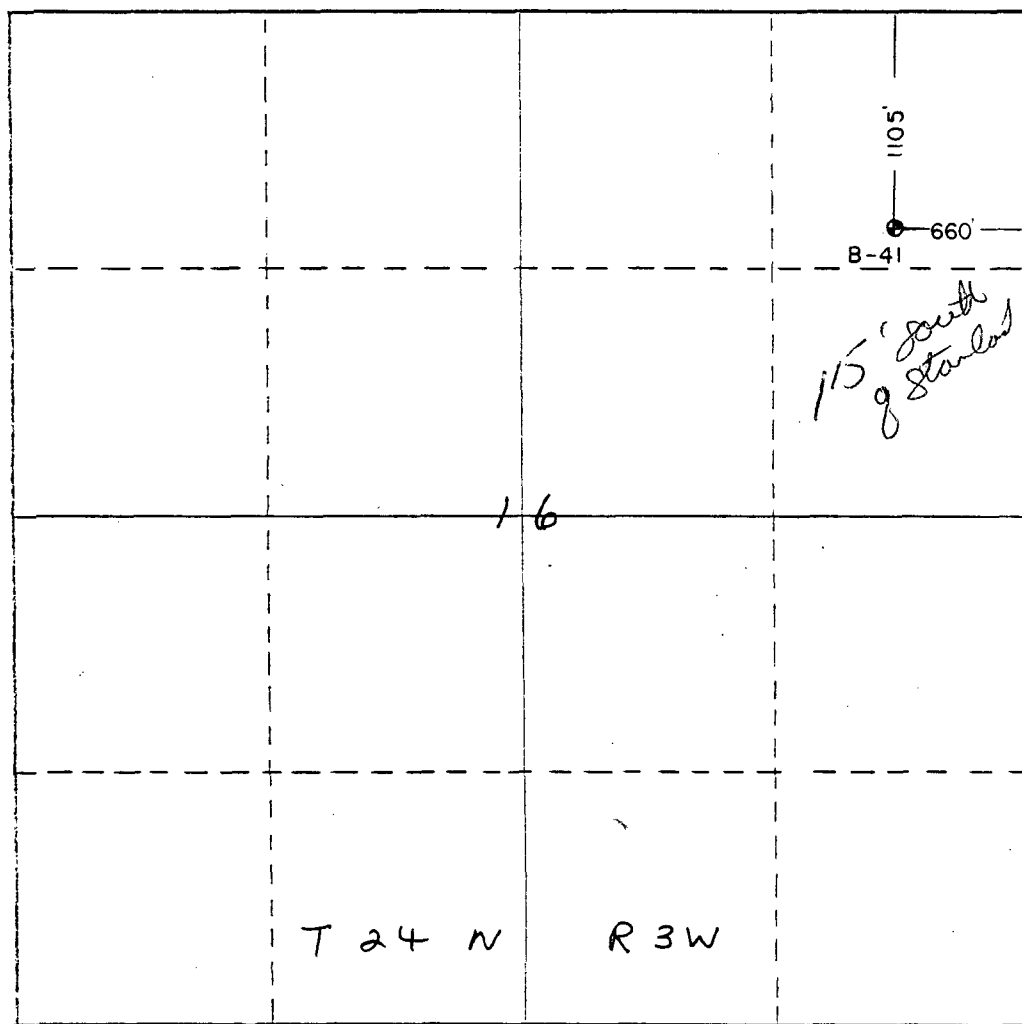
Operator MOBIL PRODUCING TEXAS & N.M.		Lease		Well No. 41
Unit Letter	Section 16	Township T. 24 N.	Range R. 3 W.	County RIO ARriba
Actual Footage Location of Well:				
1105	feet from the	NORTH	line and	660
				feet from the
				EAST
Ground Level Elev. 6941	Producing Formation Dakota		Pool West Lindrith	Dedicated Acreage: 160-2 wells Acres

1. Outline the acreage dedicated to the subject well by colored pencil or hachure marks on the plat below.
2. If more than one lease is dedicated to the well, outline each and identify the ownership thereof (both as to working interest and royalty).
3. If more than one lease of different ownership is dedicated to the well, have the interests of all owners been consolidated by communitization, unitization, force-pooling, etc?

☒ Yes ☐ No If answer is "yes," type of consolidation Unitization

If answer is "no," list the owners and tract descriptions which have actually been consolidated. (Use reverse side of this form if necessary.)

No allowable will be assigned to the well until all interests have been consolidated (by communitization, unitization, forced-pooling, or otherwise) or until a non-standard unit, eliminating such interests, has been approved by the Commission.



CERTIFICATION

I hereby certify that the information contained herein is true and complete to the best of my knowledge and belief.

C. A. Stone for

Name

G. E. TATE

Position

ENV. & REG. MANAGER

Company

Mobil Producing TX. & N.M. Inc

Date

July 25, 1985

I hereby certify that the well location shown on this plat was plotted from field notes of actual surveys made by me or under my supervision, and that the same is true and correct to the best of my knowledge and belief.

Date Surveyed

JULY 19, 1985

Registered Professional Engineer and/or Land Surveyor

Certificate No.

6256

(Gallup/Dakota)