

**NEW MEXICO OIL CONSERVATION COMMISSION  
WELL LOCATION AND ACREAGE DEDICATION PLAT**

Form C-102  
Supersedes C-128  
Effective 1-1-65

All distances must be from the outer boundaries of the Section.

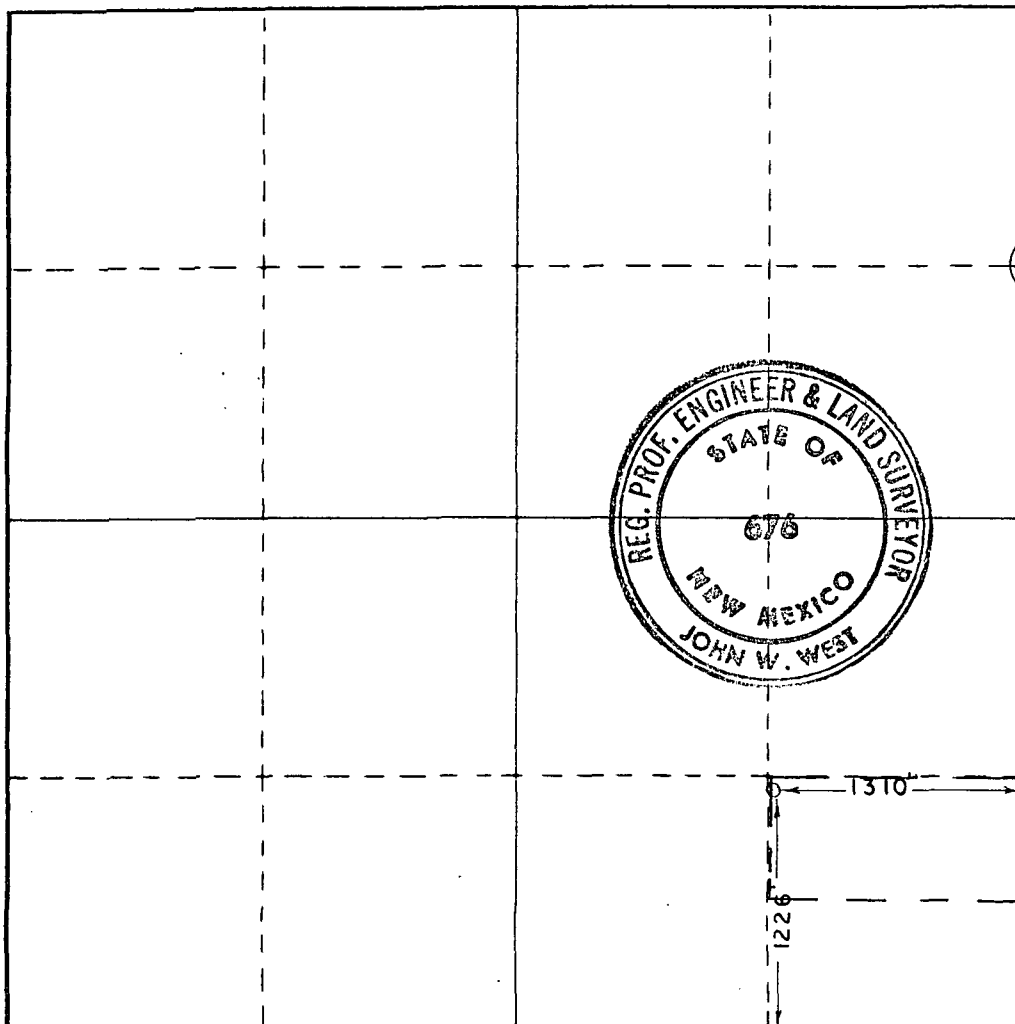
Operator <b>CONOCO, INC.</b>		Lease <b>MCA UNIT</b>		Well No. <b>372</b>
Unit Letter <b>P</b>	Section <b>20</b>	Township <b>17 SOUTH</b>	Range <b>32 EAST</b>	County <b>LEA</b>
Actual Footage Location of Well: <div style="display: flex; justify-content: space-between;"> <span>1226 feet from the <b>SOUTH</b> line and</span> <span>1310 feet from the <b>EAST</b> line</span> </div>				
Ground Level Elev. <b>3982.5</b>	Producing Formation <b>Grayburg/San Andres</b>		Pool <b>Maljamar Grayburg/San Andres</b>	Dedicated Acreage: <b>20 Acres</b>

1. Outline the acreage dedicated to the subject well by colored pencil or hatchure marks on the plat below.
2. If more than one lease is dedicated to the well, outline each and identify the ownership thereof (both as to working interest and royalty).
3. If more than one lease of different ownership is dedicated to the well, have the interests of all owners been consolidated by communitization, unitization, force-pooling, etc?

☒ Yes    ☐ No    If answer is "yes," type of consolidation **Unitization**

If answer is "no," list the owners and tract descriptions which have actually been consolidated. (Use reverse side of this form if necessary.) \_\_\_\_\_

No allowable will be assigned to the well until all interests have been consolidated (by communitization, unitization, forced-pooling, or otherwise) or until a non-standard unit, eliminating such interests, has been approved by the Commission.



**CERTIFICATION**

I hereby certify that the information contained herein is true and complete to the best of my knowledge and belief.

Name: **John W. Finney**  
 Position: **Administrative Supervisor**  
 Company: **CONOCO Inc.**

Date: **June 4, 1987**

I hereby certify that the well location shown on this plat was plotted from field notes of actual surveys made by me or under my supervision, and that the same is true and correct to the best of my knowledge and belief.

Date Surveyed  
**JUNE 3, 1987**

Registered Professional Engineer and/or Land Surveyor

**John W. West**

Certificate No. **JOHN W. WEST, 676**  
**RONALD J. EIDSON, 3239**

*Suspense Date 5-21-87*



*By DC*

R. E. Irelan  
Division Manager  
Production Department  
Hobbs Division  
North American Production

Conoco Inc.  
P.O. Box 460  
726 East Michigan  
Hobbs, NM 88240  
(505) 393-4141

May 18, 1987

State of New Mexico  
Oil Conservation Division  
P. O. Box 2088  
Santa Fe, NM 87504-2088

Attention Mr. William LeMay, Director

Gentlemen:

Request for Unorthodox Location MCA Unit No. 372, 1225' FSL and 1310' FEL, Section 20, T-17S, R-32E, Lea County, NM. Maljamar Grayburg/San Andres

Conoco Inc. respectfully requests administrative approval to drill the subject well at an unorthodox location in unit letter P, 1225' FSL & 1310' FEL, Section 20, T-17S, R-32E, Lea County, New Mexico. This well will be drilled on 20-acre spacing as provided for in Order No. 2403, dated December 31, 1962.

The necessity for drilling the MCA Unit No. 372 at an unorthodox location is due to the presence of power lines to the east of the location and roads to the north of the location.

Attached is a plat of the proposed location, Form C-102 showing well location and dedication. There are no offset operators. Please contact Ed Kepford at ext. 120 of this office if you have any further questions.

Yours very truly,

ELK:mgt

Attachments

*NSL- 2352  
RULE- 104 (I)*

*Maljamar Grayburg San Andres Pool  
40 Acre dedication  
SE 1/4 SE 1/4 Section 20*

**NEW MEXICO OIL CONSERVATION COMMISSION  
WELL LOCATION AND ACREAGE DEDICATION PLAT**

Form C-102  
Supersedes C-128  
Effective 1-1-65

All distances must be from the outer boundaries of the Section.

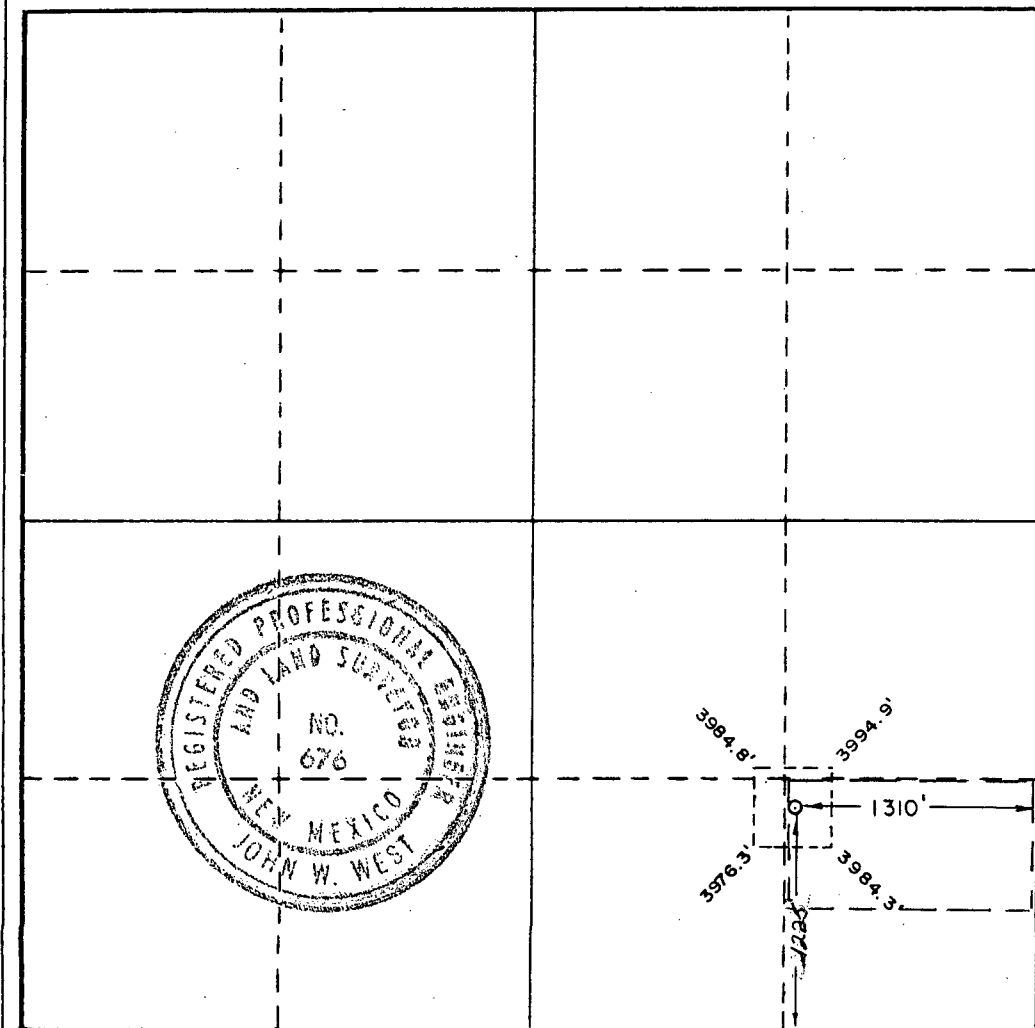
Operator <b>CONOCO, INC</b>			Lease <b>MCA Unit</b>		Well No. <b>372</b>
Unit Letter <b>P</b>	Section <b>20</b>	Township <b>17 South</b>	Range <b>32 East</b>	County <b>Lea</b>	
Actual Footage Location of Well: <b>1225'</b> feet from the <b>south</b> line and <b>1310</b> feet from the <b>east</b> line					
Ground Level Elev. <b>3984.5</b>	Producing Formation <b>Grayburg / San Andres</b>		Pool <b>Maljamar Grayburg / San Andres</b>		Dedicated Acreage: <b>20</b> Acres

1. Outline the acreage dedicated to the subject well by colored pencil or hachure marks on the plat below.
2. If more than one lease is dedicated to the well, outline each and identify the ownership thereof (both as to working interest and royalty).
3. If more than one lease of different ownership is dedicated to the well, have the interests of all owners been consolidated by communitization, unitization, force-pooling, etc?

☒ Yes    ☐ No    If answer is "yes," type of consolidation Unitization

If answer is "no," list the owners and tract descriptions which have actually been consolidated. (Use reverse side of this form if necessary.) \_\_\_\_\_

No allowable will be assigned to the well until all interests have been consolidated (by communitization, unitization, forced-pooling, or otherwise) or until a non-standard unit, eliminating such interests, has been approved by the Commission.



**CERTIFICATION**

I hereby certify that the information contained herein is true and complete to the best of my knowledge and belief.

Name John W. West  
Position Administrative Supervisor  
Company Conoco Inc.

Date 5-19-87

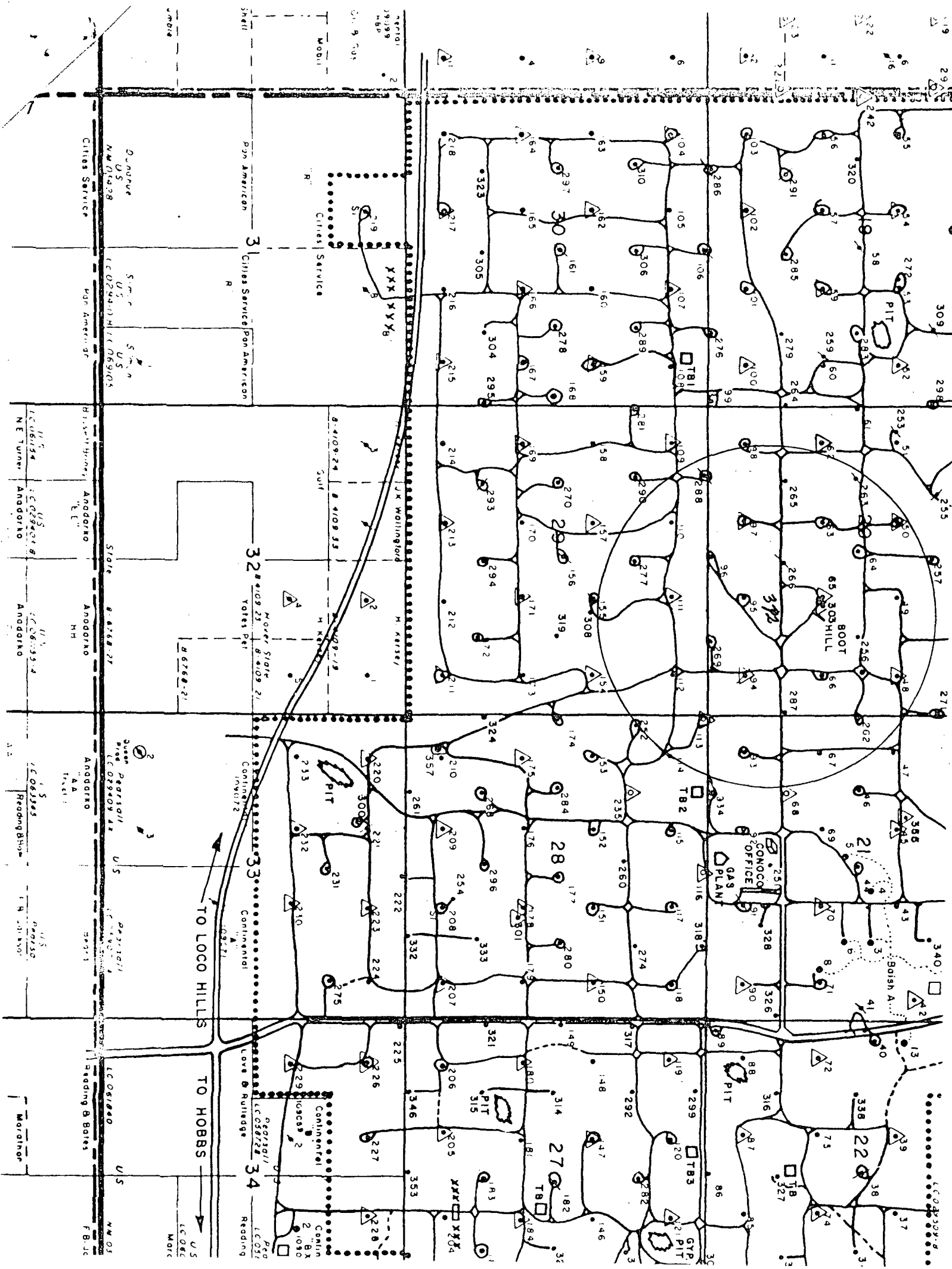
I hereby certify that the well location shown on this plat was plotted from field notes of actual surveys made by me or under my supervision, and that the same is true and correct to the best of my knowledge and belief.

Date Surveyed  
April 20, 1987

Registered Professional Engineer and/or Land Surveyor

John W. West

Certificate No. JOHN W. WEST, 676  
RONALD J. EIDSON, 3239



To David Catanach

Date 6/9/87

I have enclosed an updated plat for MCA #372. We submitted the correct location previously, but we hand corrected the plat.

ELK

