

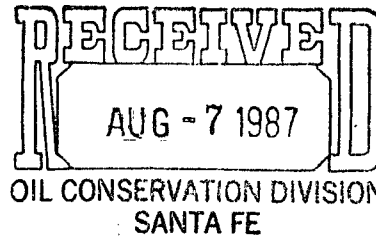
Release Date:
Aug 7, 1987
No effect

By DKL



Sirgo-Collier, Inc.

P. O. Box 3531, Midland, Texas 79702 (915) 685-0878



State of New Mexico
Energy and Mineral Department
Oil Conservation Division
P.O. Box 2088
Santa Fe, New Mexico 87501

NSL-2375
RULE-104F(Z)
West Dollarhide Queen
Sand Unit No. 73
Dollarhide Queen Pool
40 Acres ded.
SE1/4 SE1/4
Section 30

Re: Unorthodox Locations
WDQSU # 30-73
1050' FSL 1250' FEL
Sec 30, T-24-S, R-38-E
Lea County, New Mexico

Ladies and Gentlemen:

This letter shall serve as our request to have the unorthodox locations described above approved by your office.

On the attached plat you will note our locations lie within the unit boundaries of the West Dollarhide Queen Sand Unit. We are requesting these locations be approved because these locations will allow us to establish a more efficient waterflood pattern in the field.

Should you have additional questions, please call.

Sincerely,

Brian M. Sirgo

BMS:ba

attachment

cc: OCD - Hobbs
Jerry Sexton

**NEW MEXICO OIL CONSERVATION COMMISSION
WELL LOCATION AND ACREAGE DEDICATION PLAT**

Form C-102
Supersedes C-128
Effective 1-1-65

RECEIVED JUN 29 1987

All distances must be from the outer boundaries of the Section.

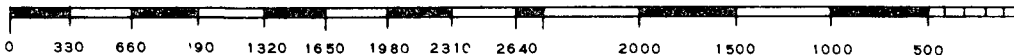
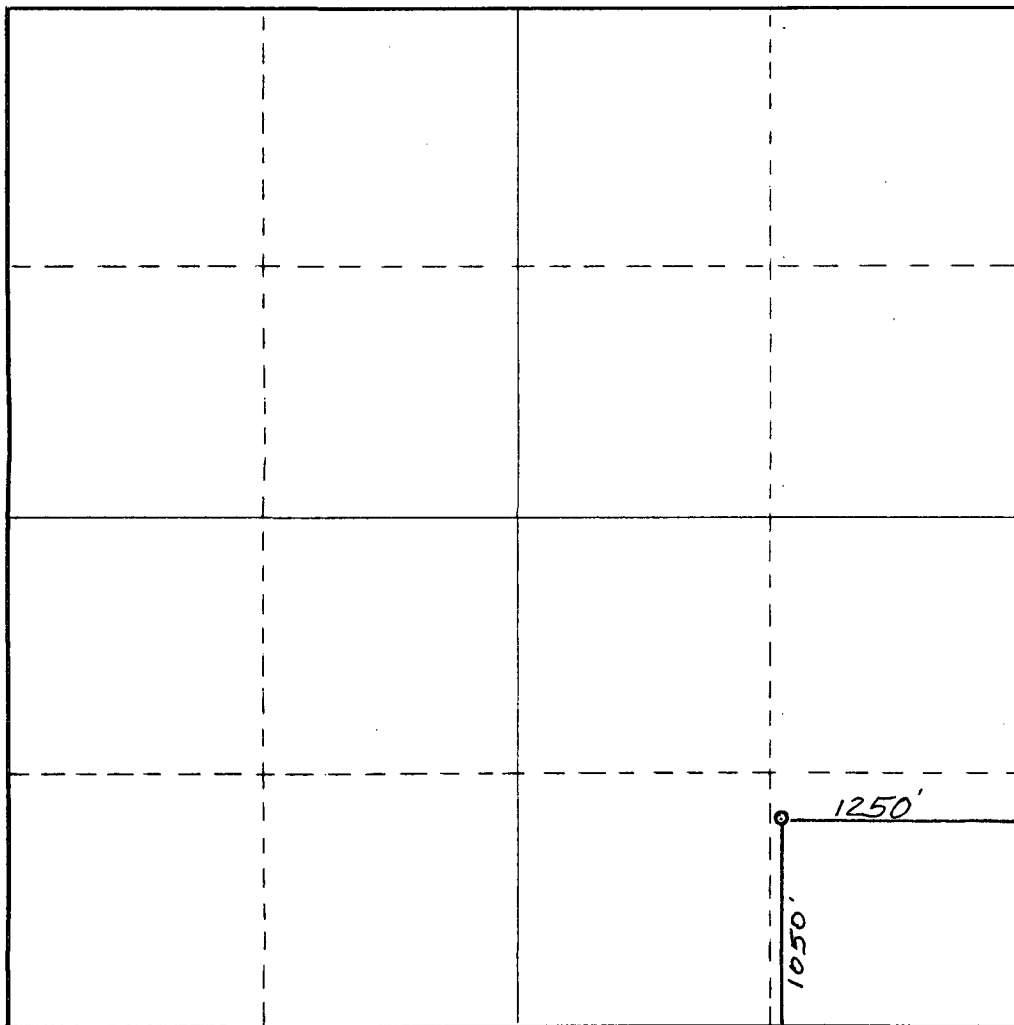
Operator SIRGO-COLLIER INC.,			Lease WDQSU 30-73		Well No.
Unit Letter P	Section 30	Township 24 South	Range 38 East	County Lea	
Actual Footage Location of Well: <div style="display: flex; justify-content: space-between;"> 1050 feet from the South line and 1250 feet from the East line </div>					
Ground Level Elev. 3146.	Producing Formation	Pool		Dedicated Acreage: <div style="text-align: right;">Acres</div>	

1. Outline the acreage dedicated to the subject well by colored pencil or hachure marks on the plat below.
2. If more than one lease is dedicated to the well, outline each and identify the ownership thereof (both as to working interest and royalty).
3. If more than one lease of different ownership is dedicated to the well, have the interests of all owners been consolidated by communitization, unitization, force-pooling, etc?

☐ Yes ☐ No If answer is "yes," type of consolidation _____

If answer is "no," list the owners and tract descriptions which have actually been consolidated. (Use reverse side of this form if necessary.) _____

No allowable will be assigned to the well until all interests have been consolidated (by communitization, unitization, forced-pooling, or otherwise) or until a non-standard unit, eliminating such interests, has been approved by the Commission.



CERTIFICATION

I hereby certify that the information contained herein is true and complete to the best of my knowledge and belief.

Name _____

Position _____

Company _____

Date _____

I hereby certify that the well location shown on this plat was plotted from field notes of actual surveys made by me or under my supervision, and that the same is true and correct to the best of my knowledge and belief.



Date Surveyed

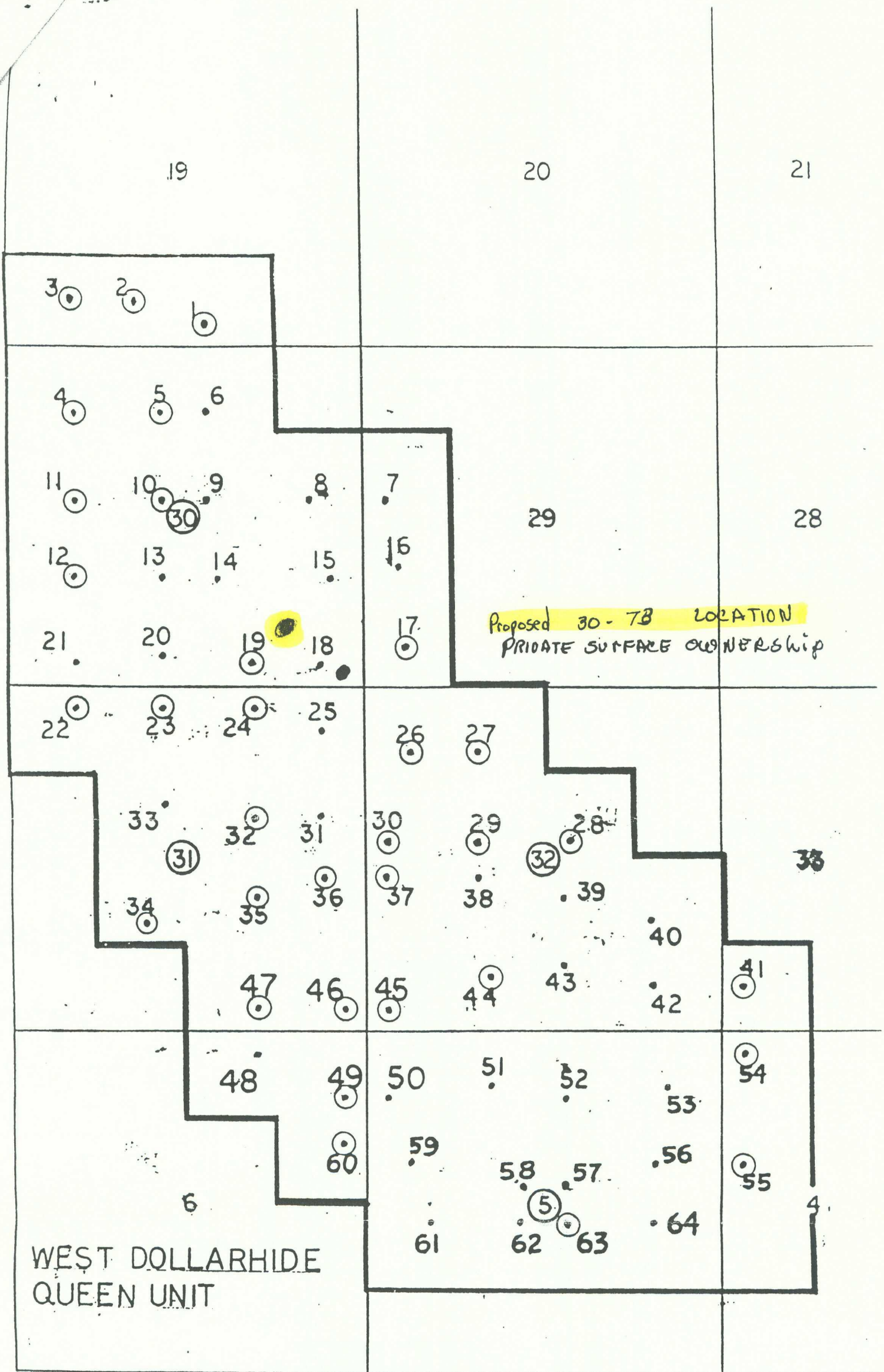
June 15, 1987

Registered Professional Engineer
and/or Land Surveyor

Dan R. Reddy

Certificate No.

NM PE&LS NO. 5412



Plat of Unit wells by Unit well number.



STATE OF NEW MEXICO
ENERGY AND MINERALS DEPARTMENT
OIL CONSERVATION DIVISION
HOBBS DISTRICT OFFICE

GARREY CARRUTHERS
GOVERNOR

July 30, 1987

POST OFFICE BOX 1980
HOBBS, NEW MEXICO 88241-1980
(505) 393-6161

Sirgo-Collier, Inc.
P.O. Box 3531
Midland, TX 79702

Attn: Timothy D. Collier

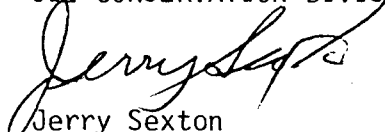
Re: Allowable Assignment
West Dollarhide Queen Sand Unit #73-P
Section 30, T24S, R38E

Gentlemen:

This will confirm your recent conversation with Evelyn Downs of this office that an allowable cannot be assigned to the above-referenced well until such time as your unorthodox location has been approved by our Santa Fe office. As soon as this order is received, we will process completion and assign an allowable.

Very truly yours,

OIL CONSERVATION DIVISION


Jerry Sexton
Supervisor, District I

ed