

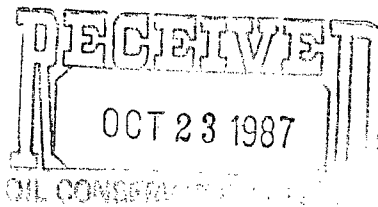
*Release Immediately  
no offset*

*By DC*



**Sirgo-Collier, Inc.**

P. O. Box 3531, Midland, Texas 79702 (915) 685-0878



October 19, 1987

State of New Mexico  
Energy and Minerals Department  
Oil Conservation Division  
Post Office Box 2088  
Santa Fe, New Mexico 87501

Re: Unorthodox Location (Amended)  
WDQSU 32-90  
1690' FNL 1060' FWL, Sec. 32  
T24S, R38E, Lea County, New Mexico

Gentlemen:

This letter shall serve as our request to have the amended unorthodox location described above approved by your office. The original location for WDQSU 32-90 staked 1700' FNL 1050' FWL, will put the wellbore only several inches away from a 4" gas line. We propose to move the location 10' to the north and 10' to the east.

On the attached plat, you will note our location still lies within the unit boundaries of the West Dollarhide Queen Sand Unit. We are requesting approval of this location because it will also allow us to establish a more efficient waterflood pattern within the unit.

Should you have additional questions, please call.

Sincerely,

*Amy L. Whitley*

Amy L. Whitley

ALW:aw

attachments

cc: OCD-Hobbs  
Jerry Sexton

19

20

21

3 2 1

4 5 6

80 81 7 83  
11 10 9 8 16 84  
12 13 14 15 17 85  
21 20 19 18 72  
76 78 75 70 71 73 77 79 30

29

28

22 23 24 25  
74 33 32 31  
31 35 36  
34

82 26 27 28  
30 29 32  
37 38 39  
40 41 42 43 44 45 46 47

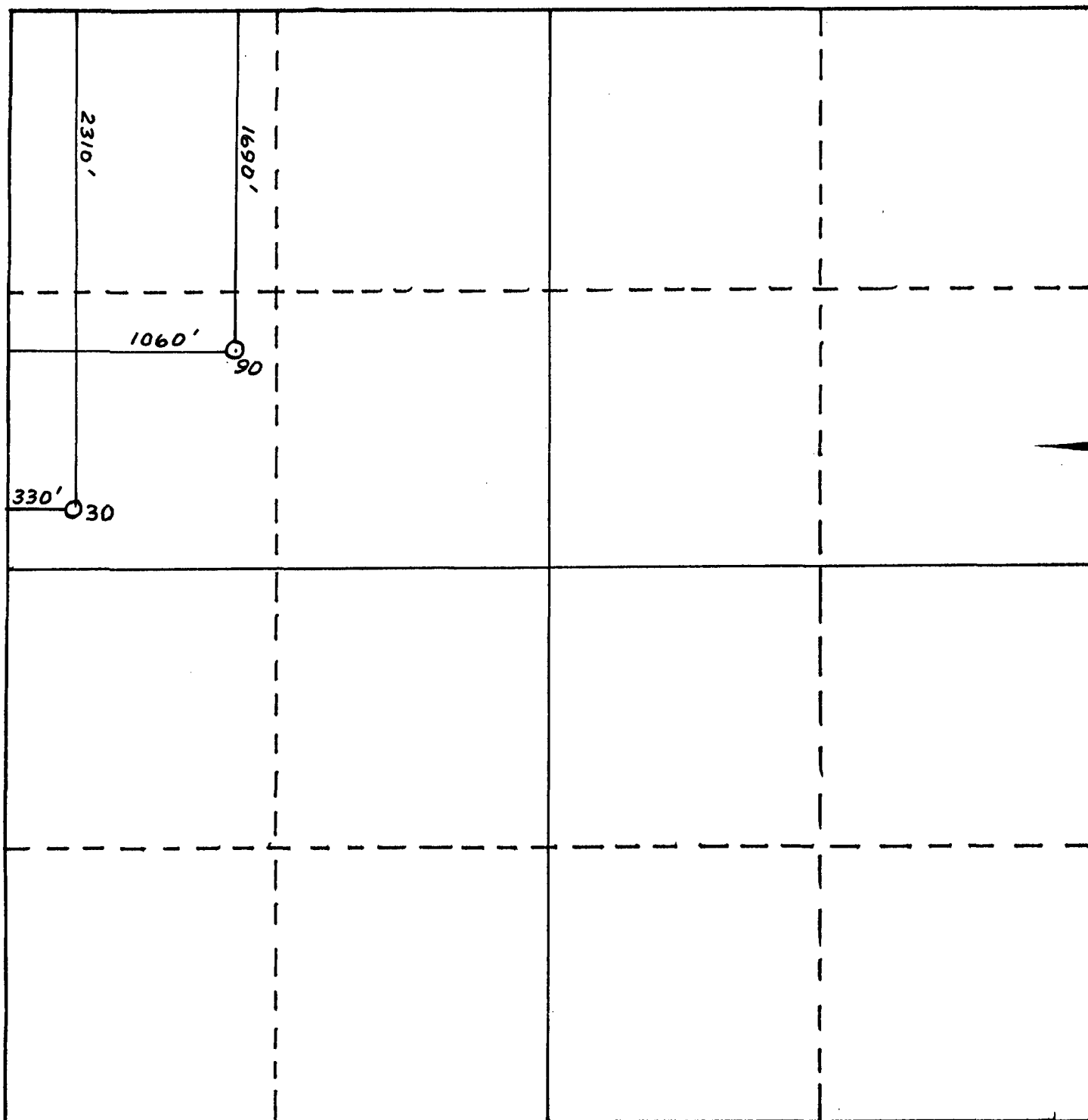
33

48 49 50 51 52 53 54  
60 59 58 57 56 55  
5 61 62 63 64

6

4

WEST DOLLARHIDE  
QUEEN SAND UNIT



WELL LOCATION PLAT

Operator: SIRGO-COLLIER, INC.

Lease: West Dollarhide Queen Sand Unit

Unit Letter: E Section: 32 Township: 24-S Range: 38-E County: Lea

Well numbers & actual footage locations: 30: 2310' FNL 330' FWL, 90: 1690' FNL 1060' FWL