

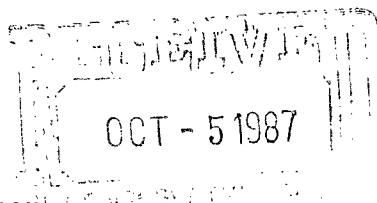
Release Date
Oct 5, 1987



By DDC

R. E. Irelan
Division Manager
Production Department
Hobbs Division
North American Production

Conoco Inc.
P.O. Box 460
726 East Michigan
Hobbs, NM 88240
(505) 393-4141



September 29, 1987

Mr. David Catanach
State of New Mexico
Oil Conservation Division
P. O. Box 2088
Santa Fe, NM 87504-2088

NISL-2410
RULE-104 F(L)
Maljamar Grayburg
San Andres Pool
40 Acres ded
NW 1/4 SE 1/4
Section 23

Dear Mr. Catanach:

Request for Unorthodox Location - MCA Unit No. 375, 1335' FSL and 1470' FEL, Section 23, T-17S, R-32E, Lea County, NM. Maljamar Grayburg/San Andres

Conoco Inc. respectfully requests administrative approval to drill the subject well at an unorthodox location in unit letter J, 1335' FSL & 1470' FEL, Section 23, T-17S, R-32E, Lea County, New Mexico. This well will be drilled on 20-acre spacing as provided for in Order No. 2403, dated December 31, 1962.

The drilling of the MCA Unit No. 375 at a non-standard location is necessary to permit the completion of an efficient production and injection pattern within a pressure maintenance project.

Attached is a plat of the proposed location, Form C-102 showing well location and dedication. There are no offset operators. Please contact Ed Kepford at ext. 120 of this office if you have any further questions.

Yours very truly,

R. E. Irelan

ELK:mgt

Attachments

**NEW MEXICO OIL CONSERVATION COMMISSION
WELL LOCATION AND ACREAGE DEDICATION PLAT**

Form C-102
Supersedes C-128
Effective 1-1-65

All distances must be from the outer boundaries of the Section.

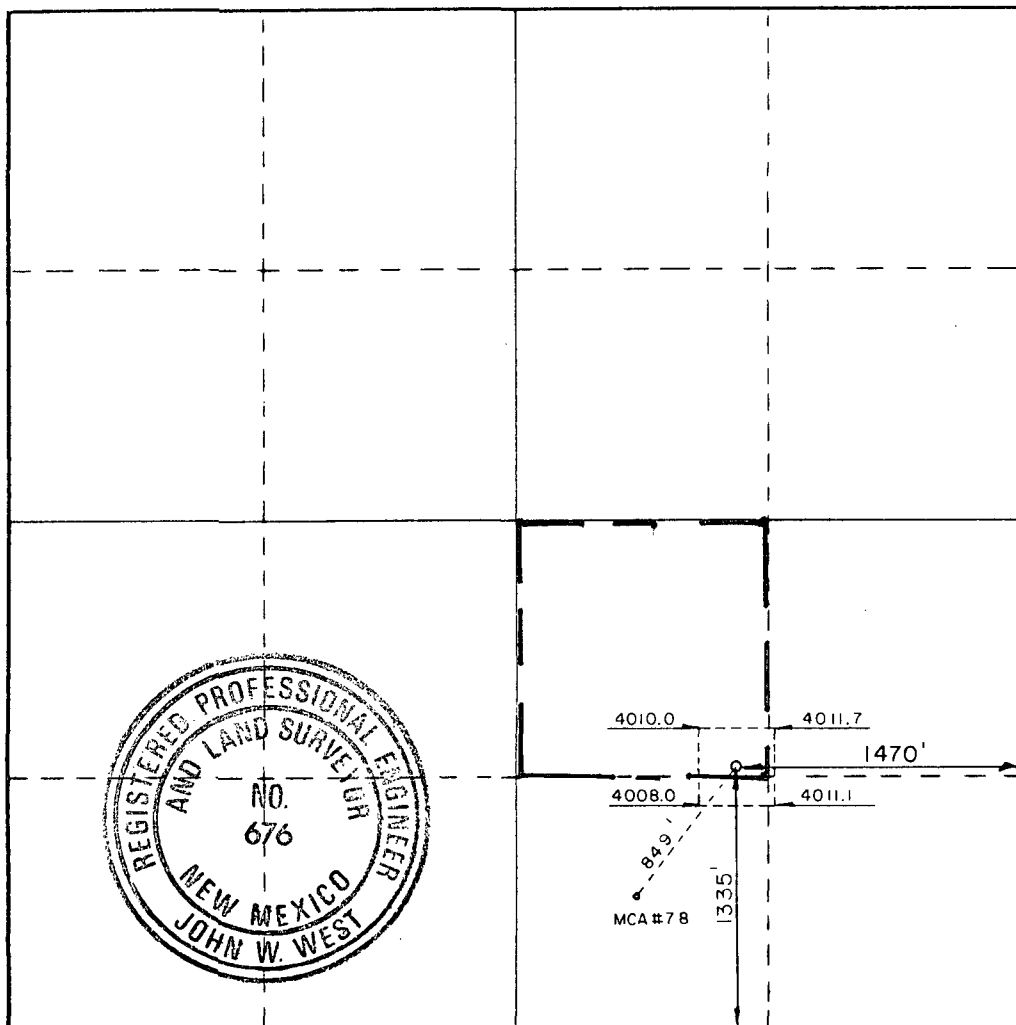
Operator Conoco, Inc.			Lease MCA		Well No. 375
Unit Letter J	Section 23	Township 17 South	Range 32 East	County Lea	
Actual Footage Location of Well: 1335 feet from the South line and 1470 feet from the East line					
Ground Level Elev. 4012.9	Producing Formation Grayburg / San Andres		Pool Maljamar Grayburg / San Andres	Dedicated Acreage: 40 Acres	

1. Outline the acreage dedicated to the subject well by colored pencil or hatchure marks on the plat below.
2. If more than one lease is dedicated to the well, outline each and identify the ownership thereof (both as to working interest and royalty).
3. If more than one lease of different ownership is dedicated to the well, have the interests of all owners been consolidated by communitization, unitization, force-pooling, etc?

☒ Yes ☐ No If answer is "yes," type of consolidation _____

If answer is "no," list the owners and tract descriptions which have actually been consolidated. (Use reverse side of this form if necessary.) _____

No allowable will be assigned to the well until all interests have been consolidated (by communitization, unitization, forced-pooling, or otherwise) or until a non-standard unit, eliminating such interests, has been approved by the Commission.



CERTIFICATION

I hereby certify that the information contained herein is true and complete to the best of my knowledge and belief.

Name Wm. Stanley D. FINNEY
Position Administrative Supervisor
Company Conoco Inc.

Date 9-29-87

I hereby certify that the well location shown on this plat was plotted from field notes of actual surveys made by me or under my supervision, and that the same is true and correct to the best of my knowledge and belief.

Date Surveyed
September 2, 1987

Registered Professional Engineer
and/or Land Surveyor

John W. West
Certificate No. **JOHN W. WEST, 676**
RONALD J. EIDSON, 3239

