

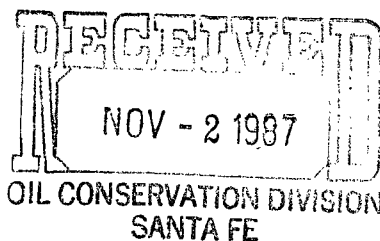
Release Date  
November 3, 1987

By DR



**Sirgo-Collier, Inc.**

P. O. Box 3531, Midland, Texas 79702 (915) 685-0878



October 27, 1987

State of New Mexico  
Energy and Minerals Department  
Oil Conservation Division  
Post Office Box 2088  
Santa Fe, New Mexico 87501

NSI-2431  
RULE-104 F(2)  
West Dollarhide Queen  
Sand Unit Well No. 98  
Dollarhide Queen Pool  
40 Acres decd.  
SE1/4 NW1/4 Sect 32

Re: Unorthodox Location  
WDQSU ~~98~~-98  
2540' FNL 2530' FWL, Sec. 32  
T-24-S, R-38-E, Lea County, New Mexico

Gentlemen:

This letter shall serve as our request to have the unorthodox location described above approved by your office.

On the attached plat, you will note our location lies within the unit boundaries of the West Dollarhide Queen Sand Unit. We are requesting approval of this location because it will allow us to establish a more efficient waterflood pattern within the unit.

Should you have additional questions, please call.

Sincerely,

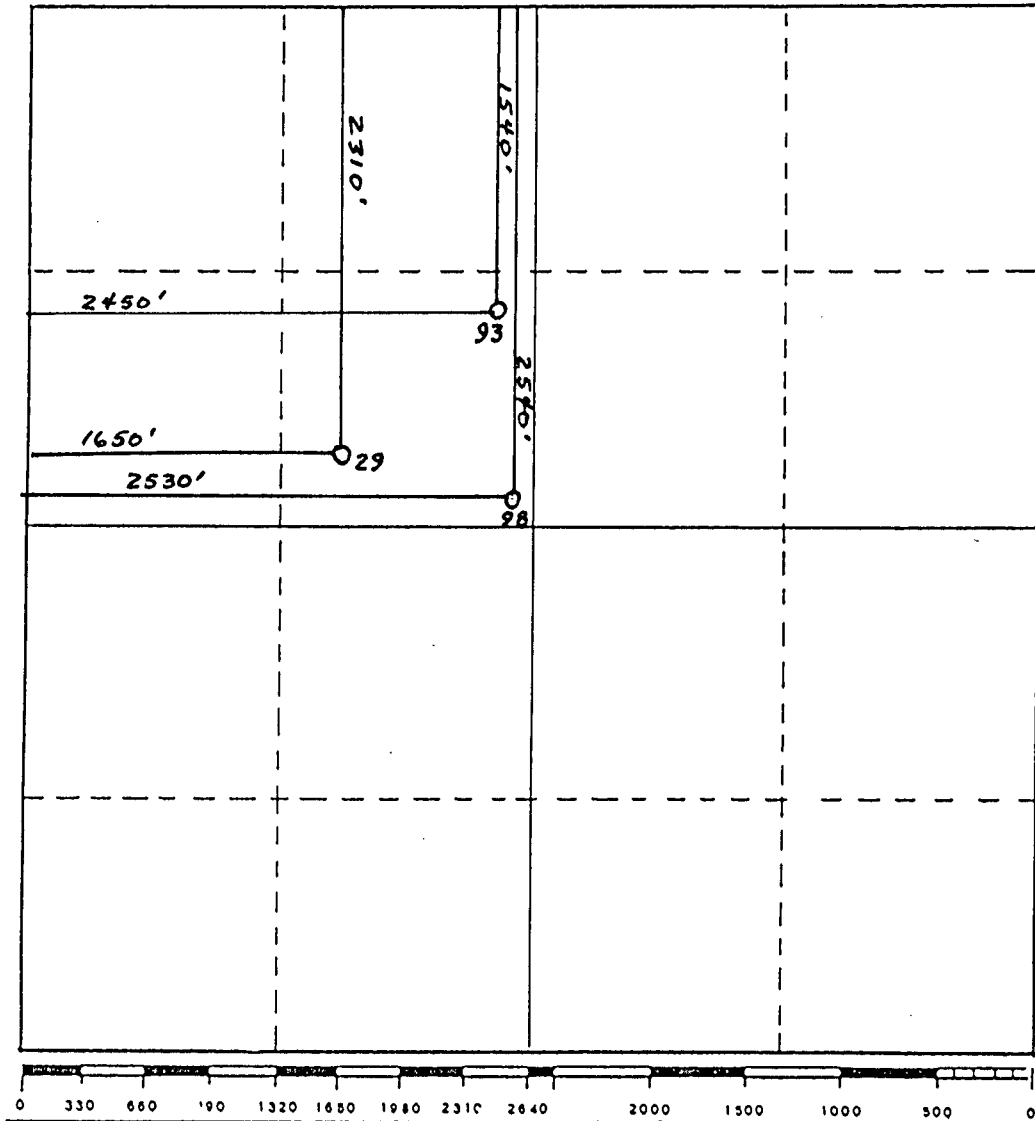
*Amy L. Whitley*

Amy L. Whitley

attachments

cc: OCD - Hobbs  
Jerry Sexton

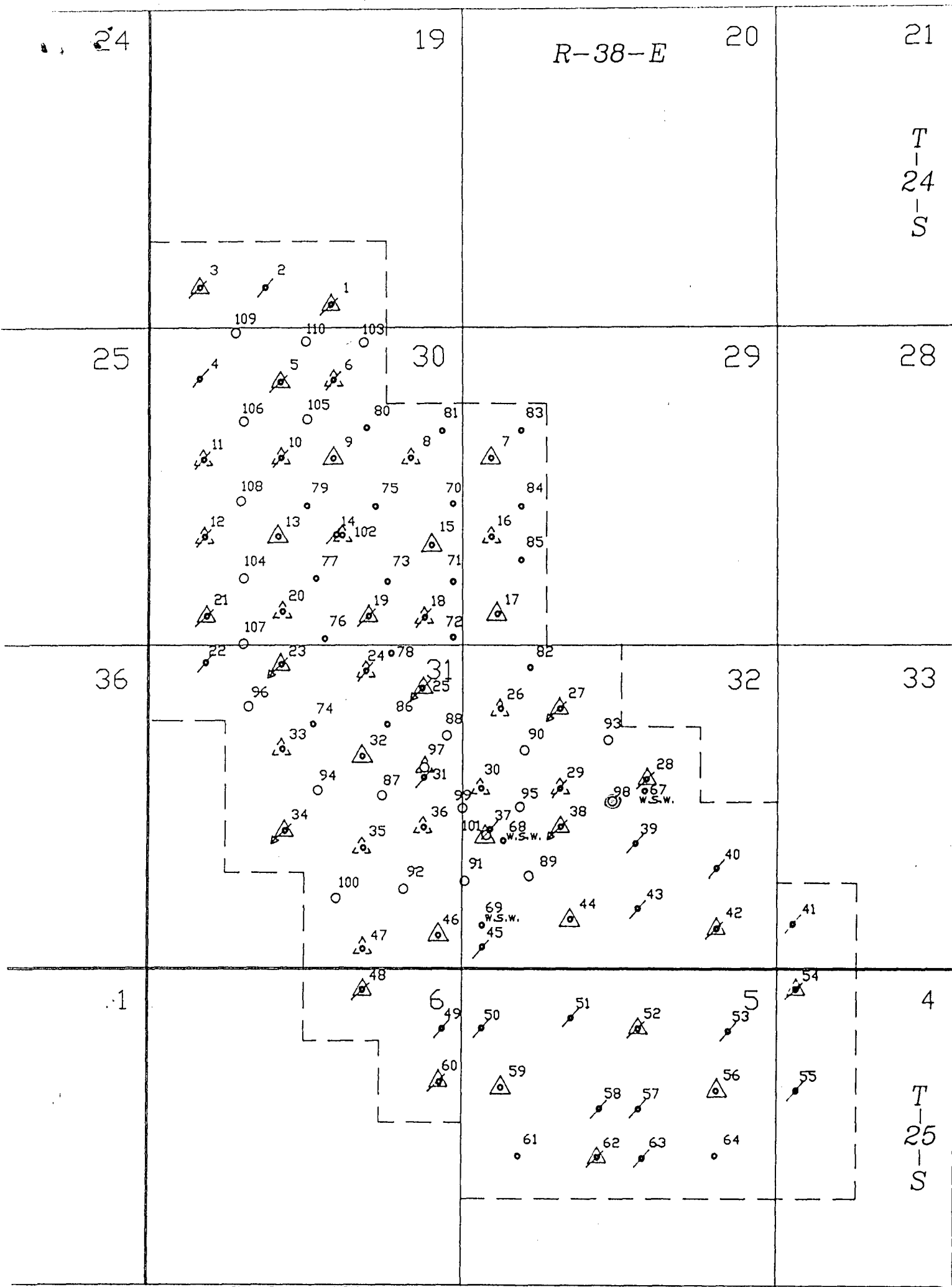
# WELL LOCATION PLAT



Operator: SIRGO-COLLIER, INC. Lease: West Dollarhide Queen Sand Unit

Unit Letter: F Section: 32 Township: 24-S Range: 38-E County: Lea

Locations: #29: 2310' FNL 1650' FWL, #93: 1540' FNL 2450' FWL, #98: 2540' FNL 2530' FWL

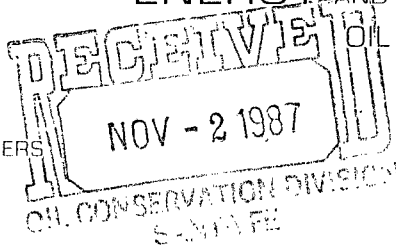




GARREY CARRUTHERS  
GOVERNOR

STATE OF NEW MEXICO

ENERGY AND MINERALS DEPARTMENT



OIL CONSERVATION DIVISION  
HOBBS DISTRICT OFFICE

10-30-87

POST OFFICE BOX 1980  
HOBBS, NEW MEXICO 88241-1980  
(505) 393-6161

OIL CONSERVATION DIVISION  
P. O. BOX 2088  
SANTA FE, NEW MEXICO 87501

RE: Proposed:

MC	_____
DHC	_____
NSL	<u>X</u> _____
NSP	_____
SWD	_____
WFX	_____
PMX	_____

Gentlemen:

I have examined the application for the:

<u>Surgis Collier Inc.</u>	<u>West Dollarhide Queen Sand Unit 98-F</u>
Operator	Lease & Well No. Unit S-T-R
	32-24-38

and my recommendations are as follows:

*[Signature]*

Yours very truly,

*[Signature]*  
Jerry Sexton  
Supervisor, District 1

/ed