



David L. Wacker
Division Manager
Production Department
Hobbs Division
North American Production

Conoco Inc.
726 East Michigan
P.O. Box 460
Hobbs, NM 88241
(505) 397-5800

July 27, 1989

Mr. William LeMay, Director
State of New Mexico
Energy & Minerals Dept.
Oil Conservation Division
P.O. Box 2088
Santa Fe, NM 87501-2088

RECEIVED

AUG - 2 1989

OIL CONSERVATION DIV.
SANTA FE

Dear Mr. LeMay:

Request for Unorthodox Location - Jicarilla 28 No. 9,
660' FNL & 970' FEL, Section 28, T25N, R4W,
Rio Arriba County, New Mexico - Mesaverde Pool

Conoco Inc. respectfully requests administrative approval of the unorthodox location for the subject well.

This well is currently completed as an oil well in the West Lindrith Gallup Dakota. Conoco is proposing to recomplete the well to the Mesaverde with the possibility of a dual completion in the future. Conoco is the only operator with Mesaverde rights offsetting this well.

Attached is a lease map and Form C-102 showing this well location and dedication. Please contact Ms. Kandy Lawson at (505) 397-5826 if you have any questions.

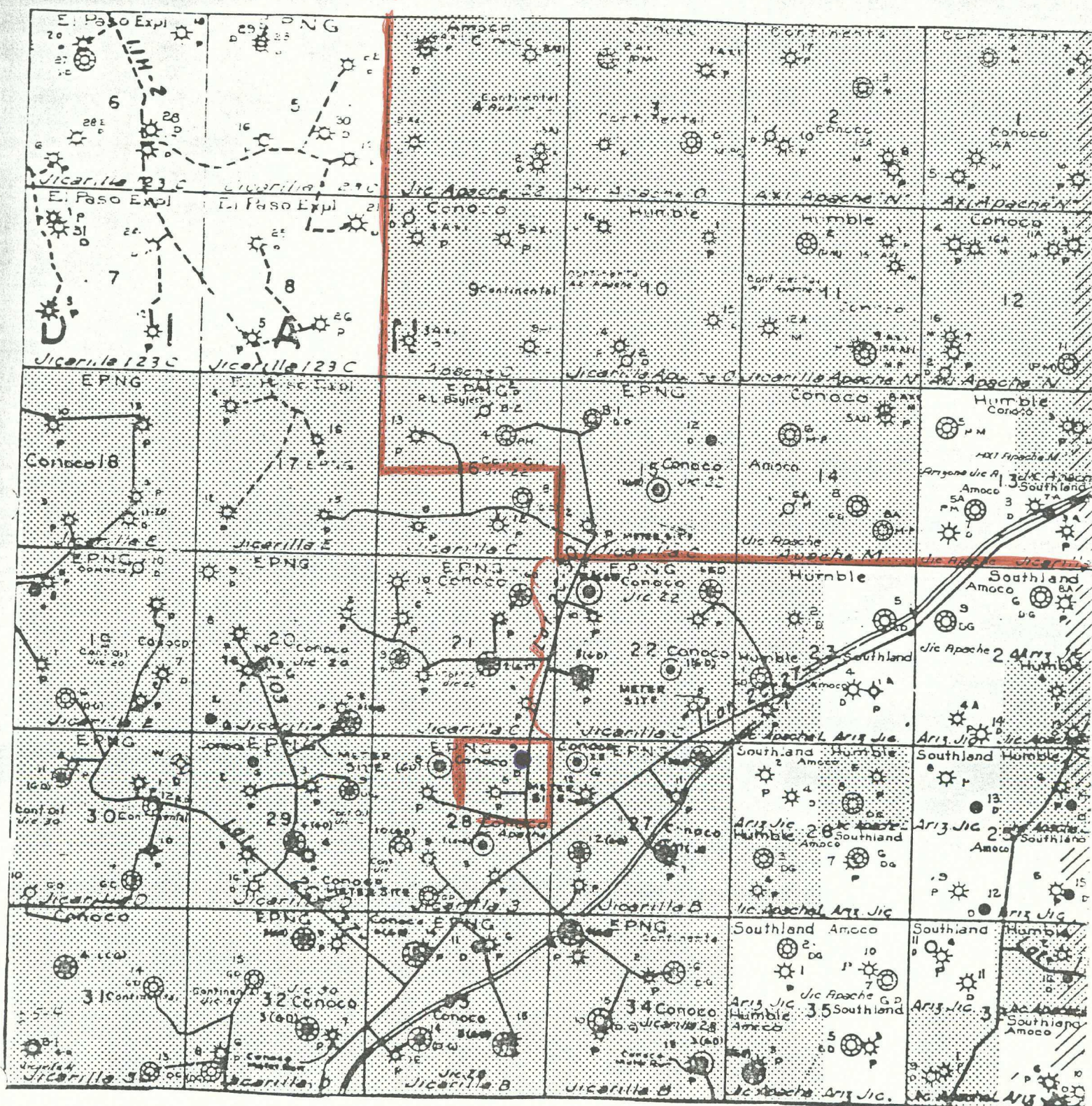
Yours very truly,

David L. Wacker
Division Manager

KLL:msb
attachment
cc: NMOCD - Aztec

- 8/2/89 - Hugh Ingram to return my call today.
- 8/3/89 - Talked/ Hugh concerning the 320 acre dedication, will submit a C-102 amendment
- 8/3/89 - Verbal by E. Barab to approve when amended C-102 comes in.
- 8/3/89 - Talked w/ Kandy Lawson in submitting me a ~~copy of~~ C-102 as amended filing for a 160-acre ASP unit

Blanco
Maravilla
Pool Bomby



conoco acreage

*Submit to Appropriate
District Office
State Lease - 4 copies
Fee Lease - 3 copies

State of New Mexico
Energy, Minerals and Natural Resources Department

Form C-102
Revised 1-1-89

OIL CONSERVATION DIVISION

P.O. Box 2088
Santa Fe, New Mexico 87504-2088

DISTRICT I
P.O. Box 1980, Hobbs, NM 88240

DISTRICT II
P.O. Drawer DD, Artesia, NM 88210

DISTRICT III
1000 Rio Brazos Rd., Aztec, NM 87410

WELL LOCATION AND ACREAGE DEDICATION PLAT

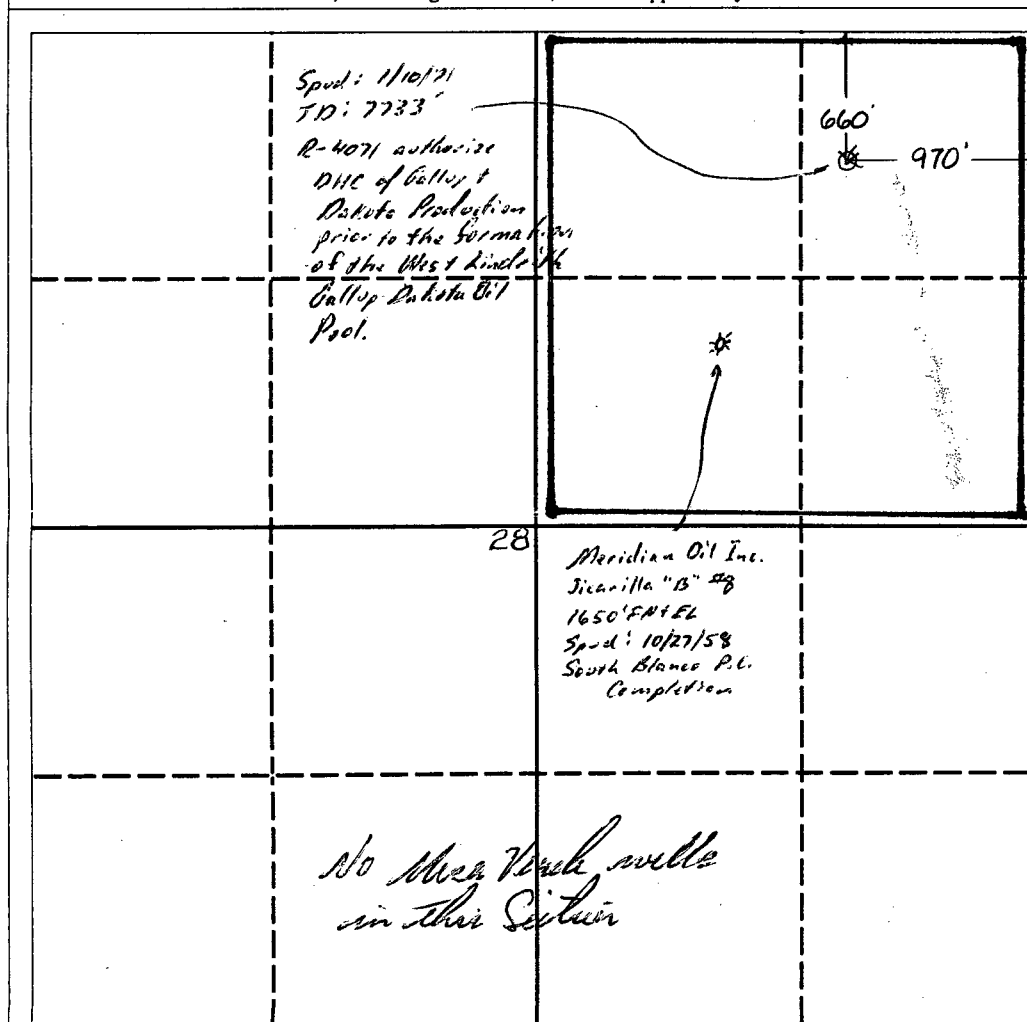
All Distances must be from the outer boundaries of the section

Operator Conoco Inc.			Lease Jicarilla 28		Well No. 9
Unit Letter A	Section 28	Township 25N	Range 4W	County NMPM Rio Arriba	

Actual Footage Location of Well:

660' feet from the North line and 970' feet from the East line
Ground level Elev. 6943' Producing Formation Mesaverde Pool Blanco Mesaverde Dedicated Acreage: 160 Acres

1. Outline the acreage dedicated to the subject well by colored pencil or hachure marks on the plat below.
2. If more than one lease is dedicated to the well, outline each and identify the ownership thereof (both as to working interest and royalty).
3. If more than one lease of different ownership is dedicated to the well, have the interest of all owners been consolidated by communitization, unitization, force-pooling, etc.?
☐ Yes ☐ No If answer is "yes" type of consolidation _____
If answer is "no" list the owners and tract descriptions which have actually been consolidated. (Use reverse side of this form if necessary). _____
No allowable will be assigned to the well until all interests have been consolidated (by communitization, unitization, forced-pooling, or otherwise) or until a non-standard unit, eliminating such interest, has been approved by the Division.



OPERATOR CERTIFICATION

I hereby certify that the information contained herein in true and complete to the best of my knowledge and belief.

Signature

W.W. Baker

Printed Name

W.W. Baker

Position

Administrative Supervisor

Company

Conoco Inc.

Date

July 27, 1989

SURVEYOR CERTIFICATION

I hereby certify that the well location shown on this plat was plotted from field notes of actual surveys made by me or under my supervision, and that the same is true and correct to the best of my knowledge and belief.

Date Surveyed

Signature & Seal of
Professional Surveyor

Certificate No.

State of New Mexico
Energy, Minerals and Natural Resources Department

OIL CONSERVATION DIVISION

P.O. Box 2088
Santa Fe, New Mexico 87504-2088

Form C-102
Revised 1-1-89
RECEIVED

AUG 7 1989

OIL CONSERVATION DIV.
SANTA FE

Submit to Appropriate
District Office
State Lease - 4 copies
Fee Lease - 3 copies

DISTRICT I
P.O. Box 1980, Hobbs, NM 88240

DISTRICT II
P.O. Drawer DD, Artesia, NM 88210

DISTRICT III
1000 Rio Brazos Rd., Aztec, NM 87410

WELL LOCATION AND ACREAGE DEDICATION PLAT

All Distances must be from the outer boundaries of the section

Operator Conoco Inc.			Lease Jicarilla 28		Well No. 9
Unit Letter A	Section 28	Township 25N	Range 4W	County NMPM Rio Arriba	

Actual Footage Location of Well:

660' feet from the North line and 970' feet from the East line

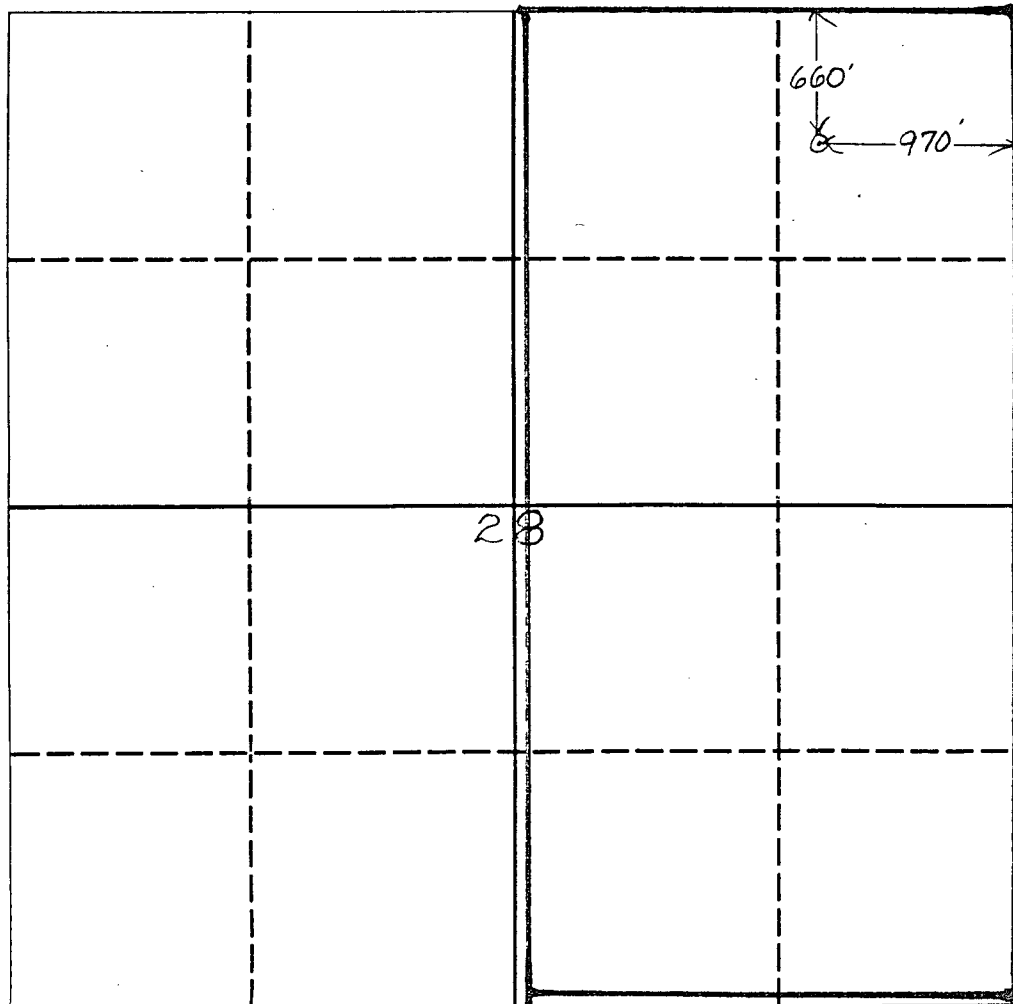
Ground level Elev. 6943'	Producing Formation Mesaverde	Pool Blanco Mesaverde	Dedicated Acreage: 320 Acres
-----------------------------	----------------------------------	--------------------------	---------------------------------

1. Outline the acreage dedicated to the subject well by colored pencil or hatchure marks on the plat below. (amended)
2. If more than one lease is dedicated to the well, outline each and identify the ownership thereof (both as to working interest and royalty).
3. If more than one lease of different ownership is dedicated to the well, have the interest of all owners been consolidated by communitization, unitization, force-pooling, etc.?

☐ Yes ☐ No If answer is "yes" type of consolidation

If answer is "no" list the owners and tract descriptions which have actually been consolidated. (Use reverse side of this form if necessary).

No allowable will be assigned to the well until all interests have been consolidated (by communitization, unitization, forced-pooling, or otherwise) or until a non-standard unit, eliminating such interest, has been approved by the Division.



OPERATOR CERTIFICATION

I hereby certify that the information contained herein is true and complete to the best of my knowledge and belief.

Signature

W.W. Baker

Printed Name

W.W. Baker

Position

Administrative Sup'v.

Company

Conoco Inc.

Date

August 3, 1989

SURVEYOR CERTIFICATION

I hereby certify that the well location shown on this plat was plotted from field notes of actual surveys made by me or under my supervision, and that the same is true and correct to the best of my knowledge and belief.

Date Surveyed

Signature & Seal of
Professional Surveyor

Certificate No.



STATE OF NEW MEXICO
ENERGY AND MINERALS DEPARTMENT
OIL CONSERVATION DIVISION
AZTEC DISTRICT OFFICE

GARREY CARRUTHERS
GOVERNOR

1000 RIO BRAZOS ROAD
AZTEC, NEW MEXICO 87410
(505) 334-6178

Date: 8-7-89

Oil Conservation Division
P.O. Box 2088
Santa Fe, NM 87504-2088

RECEIVED

AUG 10 1989

OIL CONSERVATION DIV.
SANTA FE

Re: Proposed MC _____
Proposed DHC _____
Proposed NSL X _____
Proposed SWD _____
Proposed WFX _____
Proposed PMX _____

Gentlemen:

I have examined the application dated 8-1-89
for the Conoco Inc. Tr. 28 #9
Operator Lease & Well No.

A-28-25N-4W and my recommendations are as follows:
Unit, S-T-R

[Signature]

Yours truly,

[Signature]