



marbob
energy corporation

(call - Artesia)

September 26, 1989

William LeMay, Director
Oil Conservation Division
P.O. Box 2088
Santa Fe, New Mexico

RECEIVED

SEP 28 1989

OIL CONSERVATION DIV.
SANTA FE

Attention: Mr. Mike Stogner

Dear Mr. Stogner:

Marbob Energy Corporation respectfully requests an administrative approval without notice and hearing of an unorthodox well location pursuant to order No. R-7808 of the New Mexico Oil Conservation Division. The well location's legal description is as follows:

M. Dodd B No. 66

1870 feet from the south line, and 2615 feet from the east line.

Section 14, T-17S, R-29E,
Eddy County, New Mexico

This well will be completed in the Grayburg San Andres formation in the Grayburg Jackson Seven Rivers Queen Grayburg San Andres Pool.

Attached to the application are the following exhibits:

- A. Well location and Acreage Dedication Plat (form C-102) filed with the Artesia office of the Oil Conservation Division. (Exhibit A)
- B. A plat showing the proposed unorthodox location, the respective proration unit, and the offsetting proration units including their ownership. (Exhibit B)

Please note that Marbob Energy Corporation is the operator of all offsetting proration units in the Grayburg San Andres formation of the Grayburg Jackson Seven Rivers Queen Grayburg San Andres Pool and therefore no other operators are required to be notified.

Thank you very much for your help in this matter. Should you have any further question or be in need of any additional information, please contact myself or Raye Miller.

Sincerely,

A handwritten signature in cursive script that reads "David Martin".

David Martin
Land Department

DM/dr

Enclosures

Submit to Appropriate
District Office
State Lease - 4 copies
Fee Lease - 3 copies

State of New Mexico
Energy, Minerals and Natural Resources Department

Form C-102
Revised 1-1-89

OIL CONSERVATION DIVISION

P.O. Box 2088
Santa Fe, New Mexico 87504-2088

DISTRICT I
P.O. Box 1980, Hobbs, NM 88240

DISTRICT II
P.O. Drawer DD, Artesia, NM 88210

DISTRICT III
1000 Rio Brazos Rd., Aztec, NM 87410

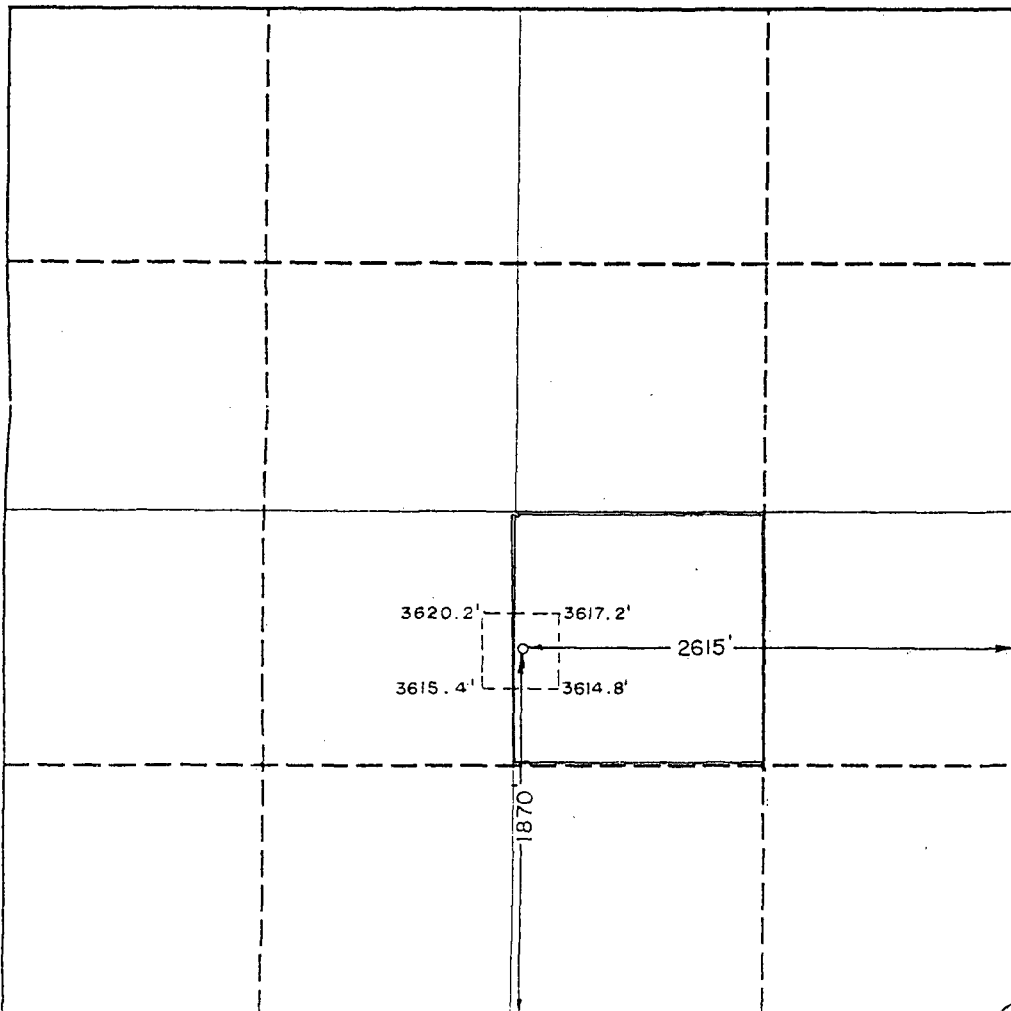
WELL LOCATION AND ACREAGE DEDICATION PLAT

All Distances must be from the outer boundaries of the section

SEP 18 1989

| | | | | | |
|--|-----------------------------------|----------------------|-----------------------------------|--------------------------------|----------------|
| Operator Marbob Energy Corp. | | | Lease Mary Dodd "B" | | Well No. 66 |
| Unit Letter J | Section 14 | Township 17 South | Range 29 East | County NMPM Eddy | |
| Actual Footage Location of Well: 1870 feet from the South line and 2615 feet from the East line | | | | | |
| Ground level Elev. 3617.9 | Producing Formation San Andres | | Pool Grbg Jackson SR Q Grbg SA | Dedicated Acreage: 40 Acres | |

1. Outline the acreage dedicated to the subject well by colored pencil or hatchure marks on the plat below.
2. If more than one lease is dedicated to the well, outline each and identify the ownership thereof (both as to working interest and royalty).
3. If more than one lease of different ownership is dedicated to the well, have the interest of all owners been consolidated by communitization, unitization, force-pooling, etc.?
☐ Yes ☐ No If answer is "yes" type of consolidation _____
If answer is "no" list the owners and tract descriptions which have actually been consolidated. (Use reverse side of this form if necessary.) _____
No allowable will be assigned to the well until all interests have been consolidated (by communitization, unitization, forced-pooling, or otherwise) or until a non-standard unit, eliminating such interest, has been approved by the Division.



OPERATOR CERTIFICATION

I hereby certify that the information contained herein is true and complete to the best of my knowledge and belief.

Rhonda Nelson
Signature

Rhonda Nelson

Printed Name

Production Clerk

Position

Marbob Energy Corporation
Company

September 26, 1989

Date

SURVEYOR CERTIFICATION

I hereby certify that the well location shown on this plat was plotted from field notes of actual surveys made by me or under my supervision, and that the same is true and correct to the best of my knowledge and belief.

Date Surveyed

September 13, 1989

Signature & Seal of
Professional Surveyor

John W. West
Certified No. JOHN W. WEST, 876
RONALD J. EIDSON, 3639
NEW MEXICO
JOHN W. WEST

