

MERIDIAN OIL

OIL CONSERVATION DIVISION
RECEIVED

'89 DEC 11 AM 8 49

December 8, 1989

Certified mail - P 017 186 024

Mr. William LeMay
New Mexico Oil Conservation Division
Post Office Box 2088
Santa Fe, New Mexico 87503

Dear Mr. LeMay:

This is a request for administrative approval for an unorthodox gas well location in the Basin Fruitland Pool.

It is intended to locate the Meridian Oil Inc.'s Jicarilla 123 #17 at 1125' from the South line and 1655' from the East line of Section 6, T-25-N, R-4-W, San Juan County, New Mexico. This well was originally drilled as a Pictured Cliffs and is intended to be plugged back to the Fruitland Coal Pool.

All surrounding lands are owned by Meridian Oil Inc.

Sincerely yours,



Peggy Bradfield

encl.

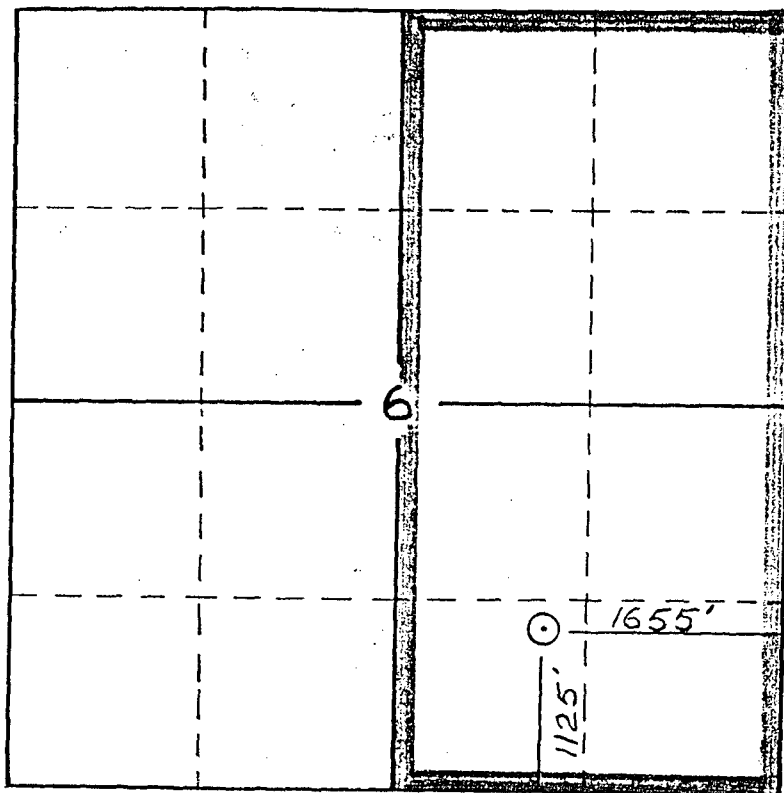
MERIDIAN OIL INC

Well Name Jicarilla 123 #17

Footage 1125' FSL; 1655' FEL

APPLICATION FOR NON-STANDARD LOCATION

County Rio Arriba State New Mexico Section 6 Township 25N Range 4W



Remarks All surrounding lands are owned by Meridian Oil Inc.

Submit to Appropriate
District Office
State Lease - 4 copies
Fee Lease - 3 copies

State of New Mexico
Energy, Minerals and Natural Resources Department

Form C-102
Revised 1-1-89

OIL CONSERVATION DIVISION

DISTRICT I
P.O. Box 1980, Hobbs, NM 88240

P.O. Box 2088

Santa Fe, New Mexico 87504-2088

DISTRICT II
P.O. Drawer DD, Artesia, NM 88210

DISTRICT III
1000 Rio Brazos Rd., Aztec, NM 87410

WELL LOCATION AND ACREAGE DEDICATION PLAT

All Distances must be from the outer boundaries of the section

Operator Meridian Oil Inc.		Lease Jicarilla 123 (Jic.123)		Well No. 17	
Unit Letter O	Section 6	Township 25N	Range 4W	County Rio Arriba	
Actual Footage Location of Well: 1125 feet from the South line and 1655 feet from the East line					
Ground level Elev. 6837' GL	Producing Formation Fruitland Coal		Pool Basin	Dedicated Acreage: 320 Acres	

1. Outline the acreage dedicated to the subject well by colored pencil or hatchure marks on the plat below.
2. If more than one lease is dedicated to the well, outline each and identify the ownership thereof (both as to working interest and royalty).
3. If more than one lease of different ownership is dedicated to the well, have the interest of all owners been consolidated by communitization, unitization, force-pooling, etc.?
☐ Yes ☐ No If answer is "yes" type of consolidation _____

If answer is "no" list the owners and tract descriptions which have actually been consolidated. (Use reverse side of this form if necessary.) _____

No allowable will be assigned to the well until all interests have been consolidated (by communitization, unitization, forced-pooling, or otherwise) or until a non-standard unit, eliminating such interest, has been approved by the Division.

OPERATOR CERTIFICATION

I hereby certify that the information contained herein is true and complete to the best of my knowledge and belief.

Signature

Peggy Bradfield

Printed Name

Regulatory Affairs

Position

Meridian Oil Inc.

Company

Date

SURVEYOR CERTIFICATION

I hereby certify that the well location shown on this plat was plotted from field notes of actual surveys made by me or under my supervision, and that the same is true and correct to the best of my knowledge and belief.

Date Surveyed

Neale C. Edwards

Signature & Seal of
Professional Surveyor

Certificate No.

6857

