



OIL CONSERVATION DIVISION
RECEIVED

Texaco USA
Producing Department

PO Box 3109
Midland TX 79702

DEC 13 AM 8 44

December 11, 1989

GOV - STATE AND LOCAL GOVERNMENTS

Unorthodox Locations

Vacuum Grayburg San Andres Unit

Well Nos. 138, 139, 140

Lea County, New Mexico

State of New Mexico
Energy and Minerals Department
Oil Conservation Division
P. O. Box 2088
Santa Fe, New Mexico 87501-2088

Attention: Mr. David Catanach

Gentlemen:

An Exception to Rule 104 C.I. by administrative approval is requested for Texaco Producing Inc.'s Vacuum Grayburg San Andres Unit Well Nos. 138, 139 & 140. The wells are located as follows:

Well No. 138: 1980' FNL, 2583' FWL, Sec. 2, T-18-S, R-34-E

Well No. 139: 1980' FNL, 1282' FEL, Sec. 2, T-18-S, R-34-E

Well No. 140: 1980' FNL, 10' FEL, Sec. 2, T-18-S, R-34-E

The wells must be drilled in these locations to ensure proper development of 20-acre spacing. Wells drilled previously on 20-acre spacing on our adjacent Central Vacuum Unit have proven to be viable wells. These wells will be completed in the Grayburg San Andres formation.

It should be noted that there are no affected offset operators to Well Nos. 138, 139 and 140.

Attached are Forms C-102 for each well and a lease plat showing the existing wells, and locations of the subject wells.

GOV - STATE AND LOCAL GOVERNMENTS

Unorthodox Locations

Vacuum Grayburg San Andres Unit

Well Nos. 138, 139, 140

Lea County, New Mexico

December 11, 1989

Page 2

Yours very truly,

A handwritten signature in dark ink, appearing to read "C.P. Basham". The signature is fluid and cursive, with the first name "C.P." and last name "Basham" clearly distinguishable.

C. P. Basham
Drilling Superintendent
on Behalf of Texaco Producing Inc.

CWH:cfb

Attachments

File
Chrono

cc: NMOCD
P. O. Box 1980
Hobbs, NM 88240

Submit to Appropriate
District Office
State Lease - 4 copies
Fee Lease - 3 copies

State of New Mexico
Energy, Minerals and Natural Resources Department

Form C-102
Revised 1-1-89

OIL CONSERVATION DIVISION

P.O. Box 2088

Santa Fe, New Mexico 87504-2088

DISTRICT I

P.O. Box 1980, Hobbs, NM 88240

DISTRICT II

P.O. Drawer DD, Artesia, NM 88210

DISTRICT III

1000 Rio Brazos Rd., Aztec, NM 87410

WELL LOCATION AND ACREAGE DEDICATION PLAT

All Distances must be from the outer boundaries of the section

Operator TEXACO PRODUCING INC.			Lease Vacuum Grayburg, San Andres Unit		Well No. 138
Unit Letter F	Section 2	Township 18 South	Range 34 East	County Lea	

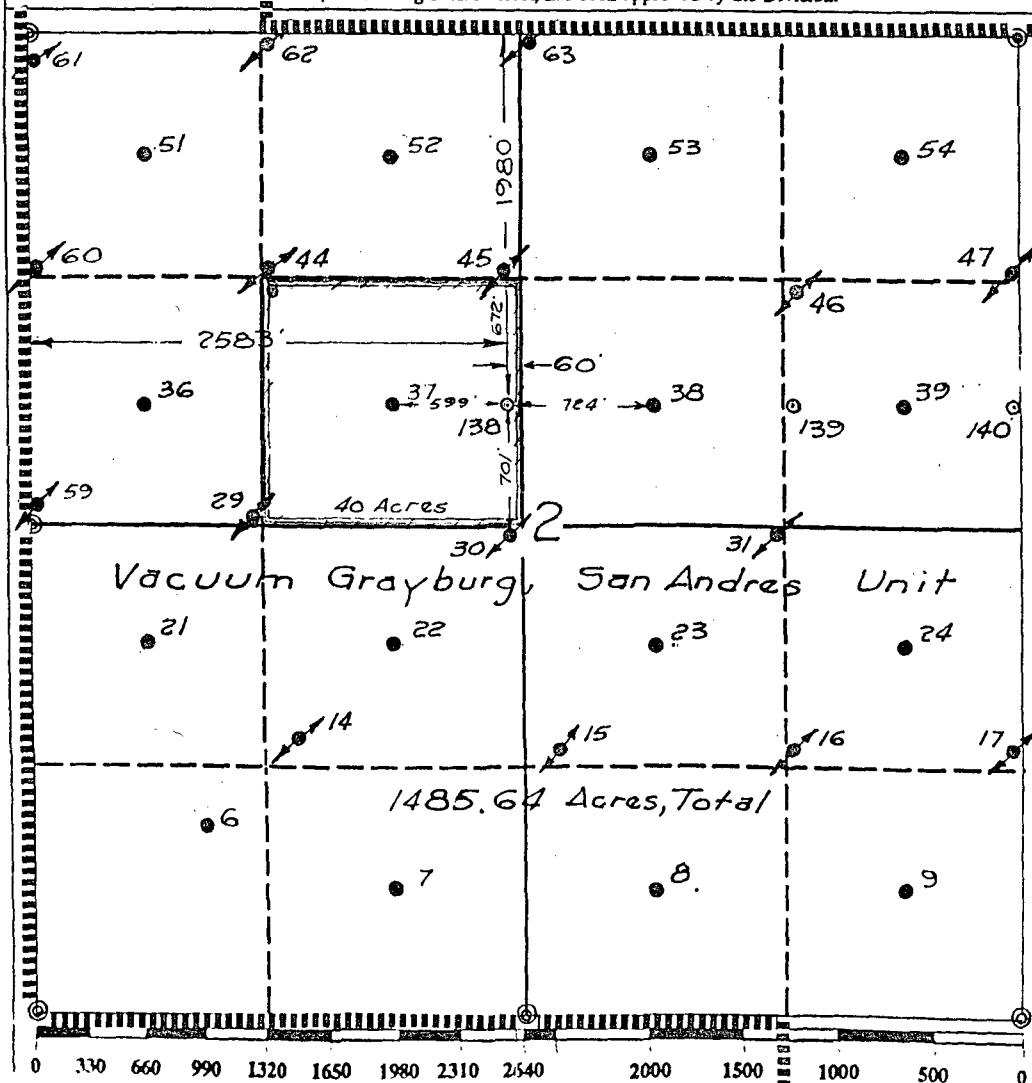
Actual Footage Location of Well:

1980	feet from the North	line and	2583	feet from the West	line
Ground level Elev. 4015	Producing Formation San Andres	Pool Vacuum Grayburg - San Andres	Dedicated Acreage: 40 Acres		

1. Outline the acreage dedicated to the subject well by colored pencil or hatchure marks on the plat below.
2. If more than one lease is dedicated to the well, outline each and identify the ownership thereof (both as to working interest and royalty).
3. If more than one lease of different ownership is dedicated to the well, have the interest of all owners been consolidated by communitization, unitization, force-pooling, etc.?
☒ Yes ☐ No If answer is "yes" type of consolidation Unitization

If answer is "no" list the owners and tract descriptions which have actually been consolidated. (Use reverse side of this form if necessary.)

No allowable will be assigned to the well until all interests have been consolidated (by communitization, unitization, forced-pooling, or otherwise) or until a non-standard unit, eliminating such interest, has been approved by the Division.



OPERATOR CERTIFICATION

I hereby certify that the information contained herein is true and complete to the best of my knowledge and belief.

Signature
Royce D. Mariott
Printed Name
Royce D. Mariott
Position
Division Surveyor
Company
Texaco Producing Inc.
Date
December 7, 1989

SURVEYOR CERTIFICATION

I hereby certify that the well location shown on this plat was plotted from field notes of actual surveys made by me or under my supervision, and that the same is true and correct to the best of my knowledge and belief.

Date Surveyed
December 6, 1989
Signature & Seal of
Professional Surveyor
John S. Piper
Certificate No. 7254
John S. Piper
December 7, 1989

Submit to Appropriate
District Office
State Lease - 4 copies
Fee Lease - 3 copies

State of New Mexico
Energy, Minerals and Natural Resources Department

Form C-102
Revised 1-1-89

OIL CONSERVATION DIVISION

P.O. Box 2088
Santa Fe, New Mexico 87504-2088

DISTRICT I

P.O. Box 1980, Hobbs, NM 88240

DISTRICT II

P.O. Drawer DD, Artesia, NM 88210

DISTRICT III

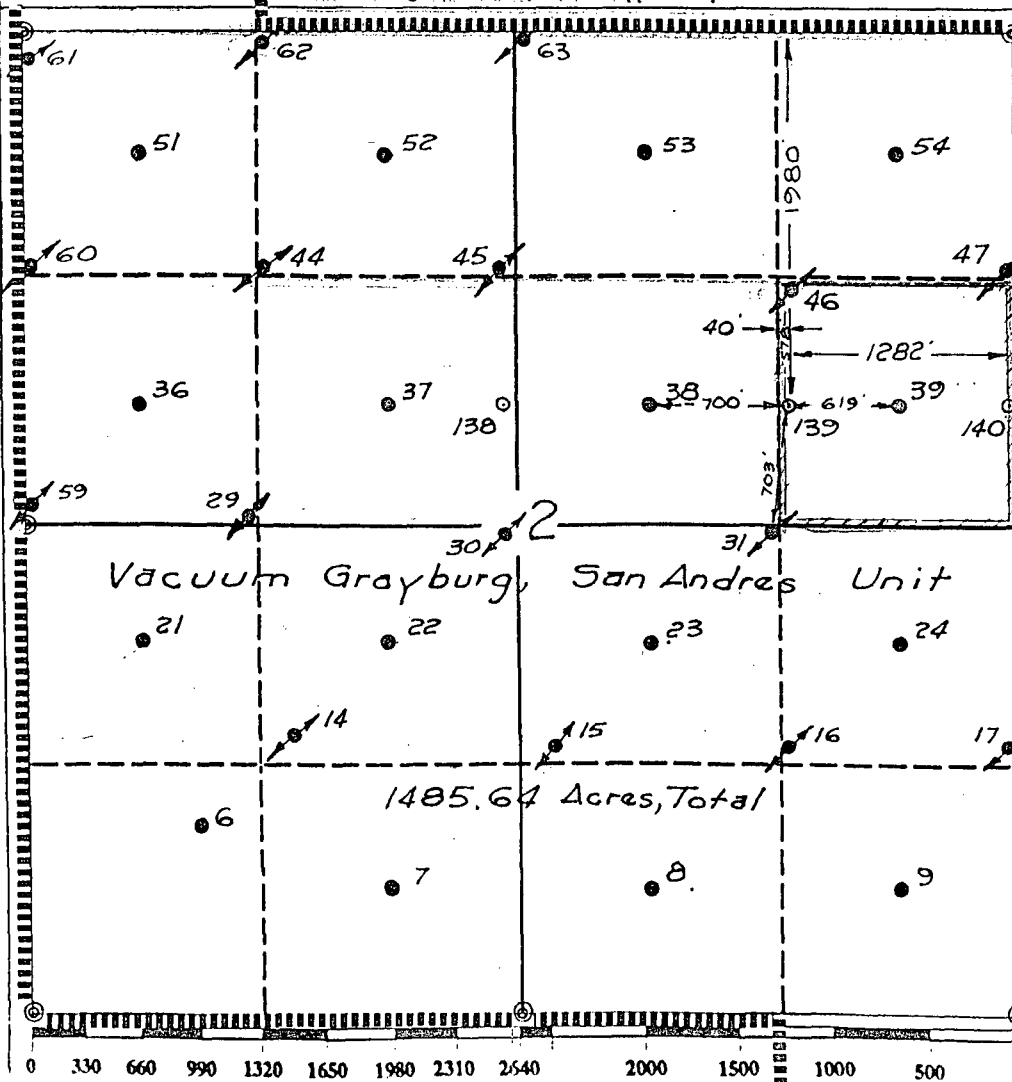
1000 Rio Brazos Rd., Aztec, NM 87410

WELL LOCATION AND ACREAGE DEDICATION PLAT

All Distances must be from the outer boundaries of the section

Operator TEXACO PRODUCING INC.			Lease Vacuum Grayburg, San Andres Unit		Well No. 139
Unit Letter H	Section 2	Township 18 South	Range 34 East	County Lea	
Actual Footage: Location of Well: 1980 feet from the North line and 1282 feet from the East line					
Ground level Elev. 4006		Producing Formation San Andres		Pool Vacuum Grayburg - San Andres	Dedicated Acreage: 40 Acres

- Outline the acreage dedicated to the subject well by colored pencil or hatchure marks on the plat below.
- If more than one lease is dedicated to the well, outline each and identify the ownership thereof (both as to working interest and royalty).
- If more than one lease of different ownership is dedicated to the well, have the interest of all owners been consolidated by communization, unitization, force-pooling, etc.?
☒ Yes ☐ No If answer is "yes" type of consolidation Unitization
If answer is "no" list the owners and tract descriptions which have actually been consolidated. (Use reverse side of this form if necessary.)
No allowable will be assigned to the well until all interests have been consolidated (by communization, unitization, forced-pooling, or otherwise) or until a non-standard unit, eliminating such interest, has been approved by the Division.



OPERATOR CERTIFICATION

I hereby certify that the information contained herein is true and complete to the best of my knowledge and belief.

Signature
Royce D. Mariott
Printed Name
Royce D. Mariott
Position
Division Surveyor
Company
Texaco Producing Inc.
Date
December 7, 1989

SURVEYOR CERTIFICATION

I hereby certify that the well location shown on this plat was plotted from field notes of actual surveys made by me or under my supervision, and that the same is true and correct to the best of my knowledge and belief.

Date Surveyed
December 6, 1989
Signature & Seal of Professional Surveyor
John S. Piper
Certificate No. 7254
John S. Piper
December 7, 1989

Submit to Appropriate
District Office
State Lease - 4 copies
Fee Lease - 3 copies
Fee 1.25¢ - 3.00¢

State of New Mexico
Energy, Minerals and Natural Resources Department

Form C-102
Revised 1-1-89

OIL CONSERVATION DIVISION

DISTRICT I
P.O. Box 1980, Hobbs, NM 88240

P.O. Box 2088

Santa Fe, New Mexico 87504-2088

DISTRICT II
P.O. Drawer DD, Artesia, NM 88210

DISTRICT III
1000 Rio Brazos Rd., Aztec, NM 87410

WELL LOCATION AND ACREAGE DEDICATION PLAT

All Distances must be from the outer boundaries of the section

Operator TEXACO PRODUCING INC.		Lease Vacuum Grayburg, San Andres Unit		Well No. 140
Unit Letter H	Section 2	Township 18 South	Range 34 East	County Lea
Actual Footage Location of Well: 1980 feet from the North line and 10 feet from the East line				
Ground level Elev. 4000	Producing Formation San Andres	Pool Vacuum Grayburg - San Andres	Dedicated Acreage: 40 Acres	

1. Outline the acreage dedicated to the subject well by colored pencil or hatchure marks on the plat below.

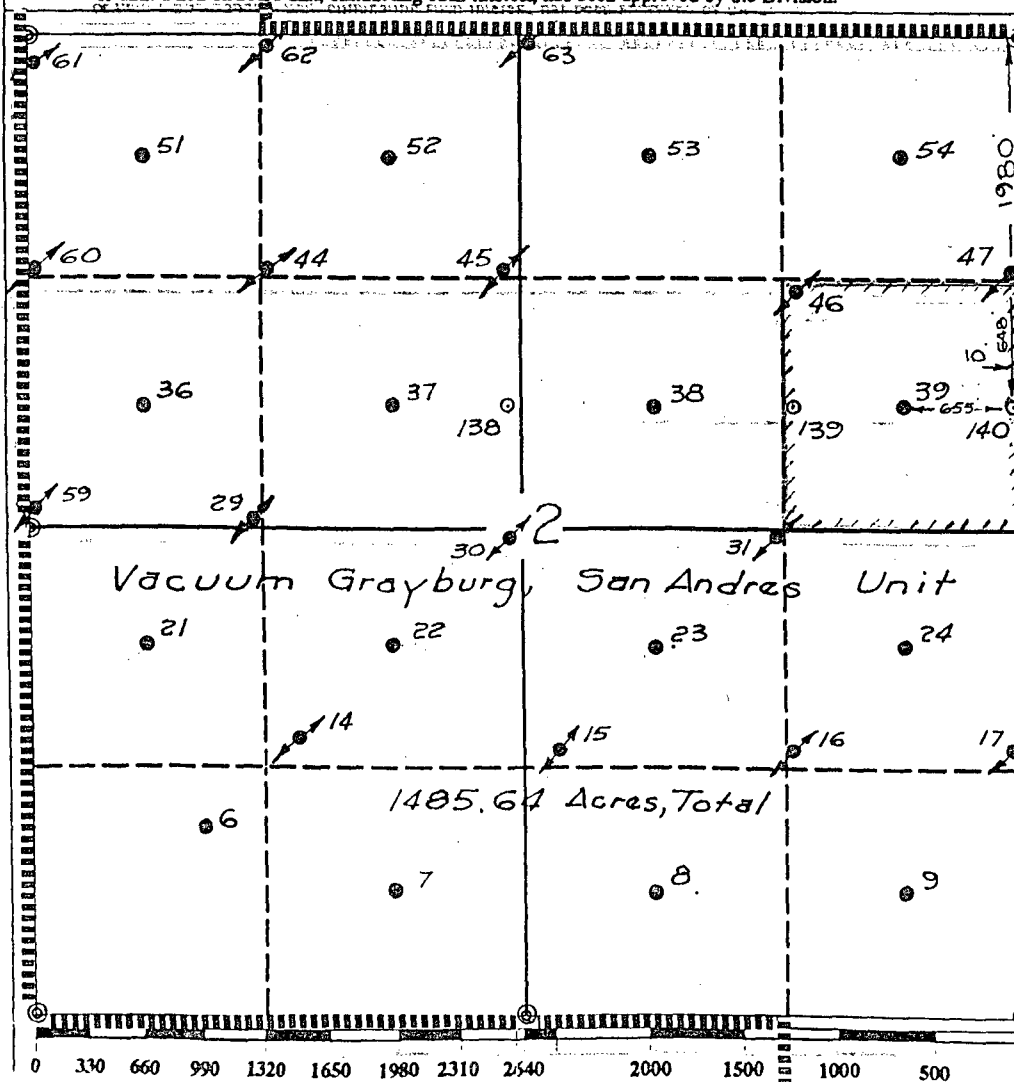
2. If more than one lease is dedicated to the well, outline each and identify the ownership thereof (both as to working interest and royalty).

3. If more than one lease of different ownership is dedicated to the well, have the interest of all owners been consolidated by communitization, unitization, force-pooling, etc.?

☒ Yes ☐ No If answer is "yes" type of consolidation Unitization

If answer is "no" list the owners and tract descriptions which have actually been consolidated: (Use reverse side of this form if necessary).

No allowable will be assigned to the well until all interests have been consolidated (by communitization, unitization, forced-pooling, or otherwise) or until a non-standard unit, eliminating such interest, has been approved by the Division.



OPERATOR CERTIFICATION

I hereby certify that the information contained herein is true and complete to the best of my knowledge and belief.

Signature
Royce D. Mariott
Printed Name
Royce D. Mariott
Position
Division Surveyor
Company
Texaco Producing Inc.
Date
December 7, 1989

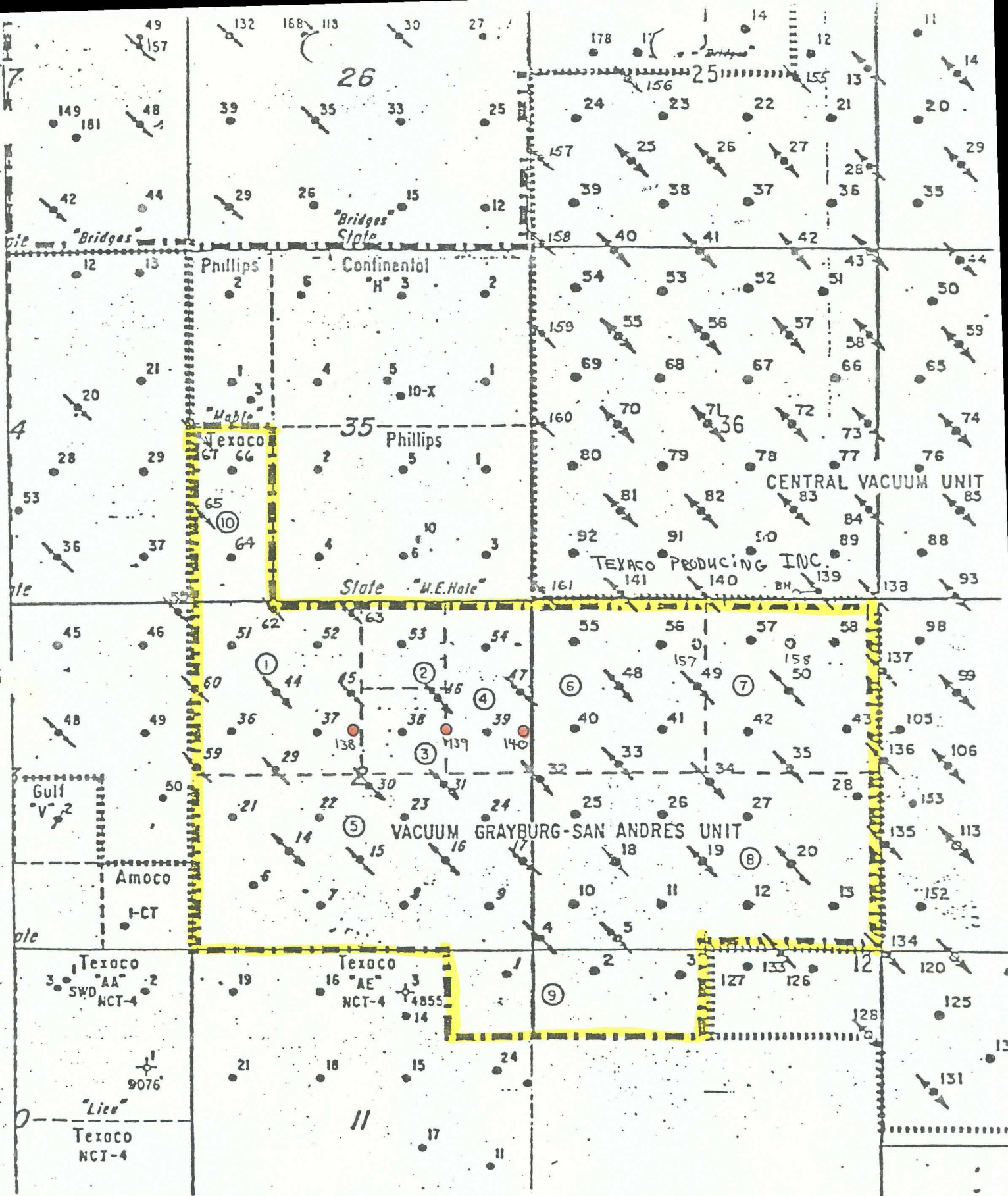
SURVEYOR CERTIFICATION

I hereby certify that the well location shown on this plat was plotted from field notes of actual surveys made by me or under my supervision, and that the same is true and correct to the best of my knowledge and belief.

Date Surveyed
December 6, 1989
Signature & Seal of
Professional Surveyor

John S. Piper
Certificate No. 7254
John S. Piper

December 7, 1989



⑨ TRACT NUMBER

TEXACO Inc.
VACUUM G-SA UNIT
VACUUM G-SA FIELD
LEA COUNTY, NEW MEXICO



STATE OF NEW MEXICO
ENERGY AND MINERALS DEPARTMENT
OIL CONSERVATION DIVISION
RECEIVED
HOBBS DISTRICT OFFICE
89 DEC 18 AM 9 43
12-14-89

GARREY CARRUTHERS
GOVERNOR

POST OFFICE BOX 1980
HOBBS, NEW MEXICO 89241-1980
(505) 393-6161

OIL CONSERVATION DIVISION
P. O. BOX 2088
SANTA FE, NEW MEXICO 87501

RE: Proposed:

MC _____
DHC _____
NSL X _____
NSP _____
SWD _____
WFX _____
PMX _____

Gentlemen:

I have examined the application for the:

138-F 2-18-34
139-H 2-18-34
140-H 2-18-34

Texaco Producing Inc. Vacuum GB SA Unit
Operator Lease & Well No. Unit S-T-R

and my recommendations are as follows:

OK

Yours very truly,

Jerry Sexton
Jerry Sexton
Supervisor, District 1

/ed