



STATE OF NEW MEXICO
ENERGY, MINERALS AND NATURAL RESOURCES DEPARTMENT
OIL CONSERVATION DIVISION

GARREY CARRUTHERS
GOVERNOR

POST OFFICE BOX 2088
STATE LAND OFFICE BUILDING
SANTA FE, NEW MEXICO 87504
(505) 827-5800

June 4, 1990

Meridian Oil, Inc.
P.O. Box 4289
Farmington, NM 87499-4289

Attention: Peggy Bradfield

RE: *Unorthodox coal gas well location application;
Cleveland Well No. 2, 1090' FSL - 790' FEL
(Unit P) 20-T27N-R9W, Basin-Fruitland Coal Gas
Pool, San Juan County, New Mexico.*

Dear Ms. Bradfield:

Our files indicate that Meridian intends to drill its Cleveland Well No. 222 at a standard coal gas well location 1110 feet from the North line and 1835 feet from the East line (Unit B) of Section 20, the E/2 also to be dedicated thereon. What is Meridian's plans for this well at this time?

Sincerely,

Michael E. Stogner
Petroleum Engineer

MES/ag

cc: Oil Conservation Division - Aztec
US Bureau of Land Management - Farmington

222
6/27/90
*has been cancelled
per conversation w/ Peggy*

UNION
UNITED STATES
DEPARTMENT OF THE INTERIOR
BUREAU OF LAND MANAGEMENT
'90 APR 2 11 10 07

SUNDRY NOTICES AND REPORTS ON WELLS

1. TYPE OF WELL GAS	5. LEASE NUMBER NM-011393
2. OPERATOR MERIDIAN OIL INC.	6. IF INDIAN, ALL. OR TRIBE NAME
3. ADDRESS & PHONE NO. OF OPERATOR P O BOX 4289 FARMINGTON, NM 87499	7. UNIT AGREEMENT NAME
4. LOCATION OF WELL 1110'N 1835'E	8. FARM OR LEASE NAME CLEVELAND
	9. WELL NO. 222
	10. FIELD, POOL, OR WILDCAT BASIN FRUITLAND COAL
	11. SEC. T. R. M OR BLK. SEC. 20 T27N R09W NMPM
14. PERMIT NO.	12. COUNTY SAN JUAN
15. ELEVATIONS 6408'GL	13. STATE NM
16. NOTICE OF INTENTION TO: Change Plans	
17. Describe proposed or completed operations	

Attached is a revised operations plan, BOPE diagram and anticipated production facilities diagram on the subject well.

RECEIVED

MAR 28 1990

OIL CON. DIV.
DIST. 3

18. AUTHORIZED BY:

[Signature]
REGULATORY AFFAIRS

9/9/89
DATE

NOTE: THIS FORMAT IS ISSUED IN LIEU OF US BLM FORM 3160-5.

=====

(This space for Federal or State office use)

APPROVED BY _____
CONDITION OF APPROVAL, IF ANY:

TITLE _____

APPROVED

MAR 26 1990
DATE *Ren Townsend*

FOR AREA MANAGER
FARMINGTON RESOURCE AREA

Well Name: 222 CLEVELAND 1110'N 1835'E
Sec. 20 T27N R09W SAN JUAN NEW MEXICO
BASIN FRUITLAND COAL Elevation 6408'GL

Formation tops: Surface- NACIMIENTO
Ojo Alamo- 1317
Kirtland- 1465
Fruitland- 2015
Fruitland Coal Top- 2083
Fruitland Coal Base- 2247
Total Depth- 2248
Pictured Cliffs- 2253

Logging Program: Mud logs from 2015 to total depth.

Mud Program:	Interval	Type	Weight	Visc.	Fl. Loss
	0 - 200	Spud	8.4 - 8.9	40-50	no control
	200 - 2248	Non-dispersed	8.4 - 9.5	30-60	no control

Casing Program:	Hole Size	Depth Interval	Csg. Size	Weight	Grade
	12 1/4"	0 - 200	8 5/8"	24.0#	K-40
	7 7/8"	0 - 2248	5 1/2"	15.5#	K-55
Tubing Program:		0 - 2248	2 3/8"	4.7#	J-55

Float Equipment: 8 5/8" surface casing - saw tooth guide shoe.

5 1/2" production casing - float shoe on bottom.
Three centralizers run every other joint above shoe.

Wellhead Equipment: 8 5/8" x 5 1/2" x 2 3/8" x 11" 3000 psi xmas tree assembl

Cementing:

8 5/8" surface casing - cement with 140 sacks of class "B" cement with 1/4# flocele/sack and 3% calcium chloride (165 cu ft. of slurry, 100% excess to circulate to surface). WOC 12 hours. Test casing to 600 psi for 30 minutes.

5 1/2" production casing - lead with 106 sacks of 65/35 class "B" poz with 6% gel, 2% calcium chloride and 1/2 cu.ft. Perlite/sack (10.3 gallons of water/sack) tail with 100 sacks of class "B" with 2% calcium chloride. 323 cu ft. of slurry, 100% excess to cover the Ojo Alamo. Run temperature survey at 8 hours. WOC 12 hours. Test casing to 1500 psi for 30 minutes.

BOP and Tests:

Surface to TD - 11" 2000 psi(minimum) double gate BOP stack

From surface to TD - choke manifold (Reference Figure #3).

Pipe rams will be actuated at least once each day and blind rams actuated once each trip to test proper functioning. A kelly cock valve and drill string safety valves to fit each drill string will be maintained and available on the rig floor.

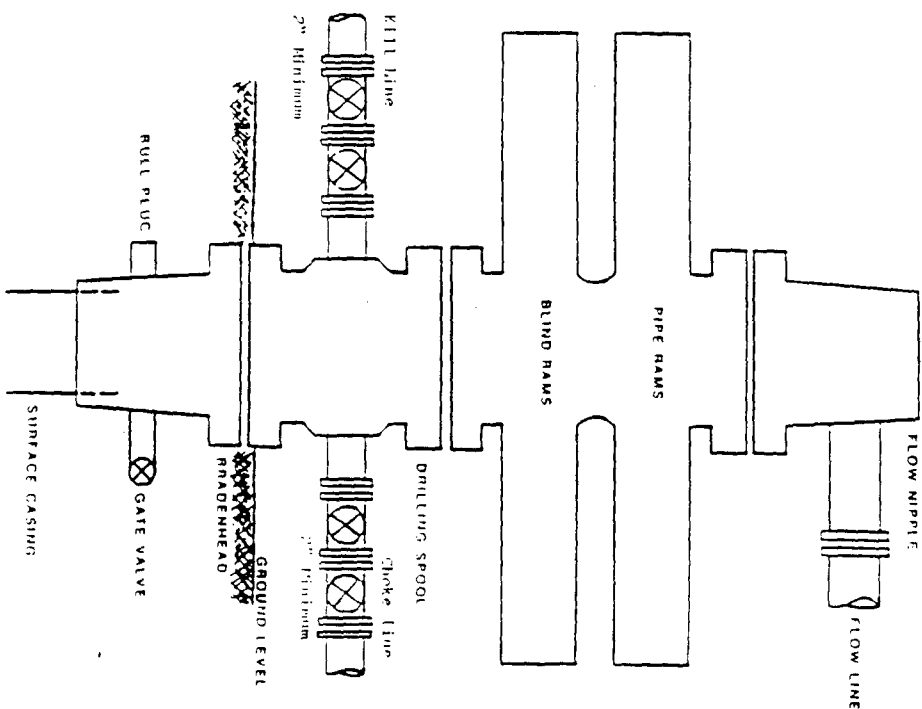
Addition Information:

The Fruitland coal formation will be completed.

This gas is dedicated.

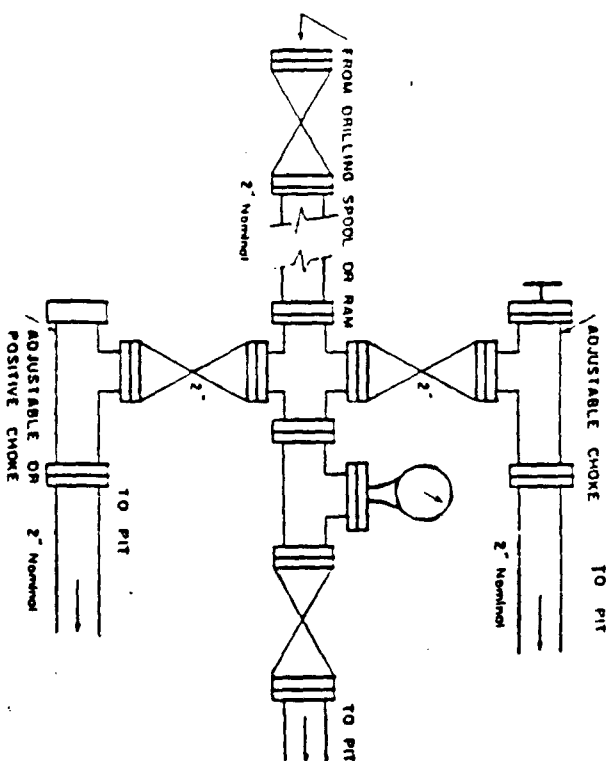
The E/2 of Section 20 is dedicated to this well.

FIGURE #1



Minimum POPE Installation for a typical Fruitland Coal well from surface to total depth. 11", 2000 psi working pressure double gate not equipped with blind and pipe rams.

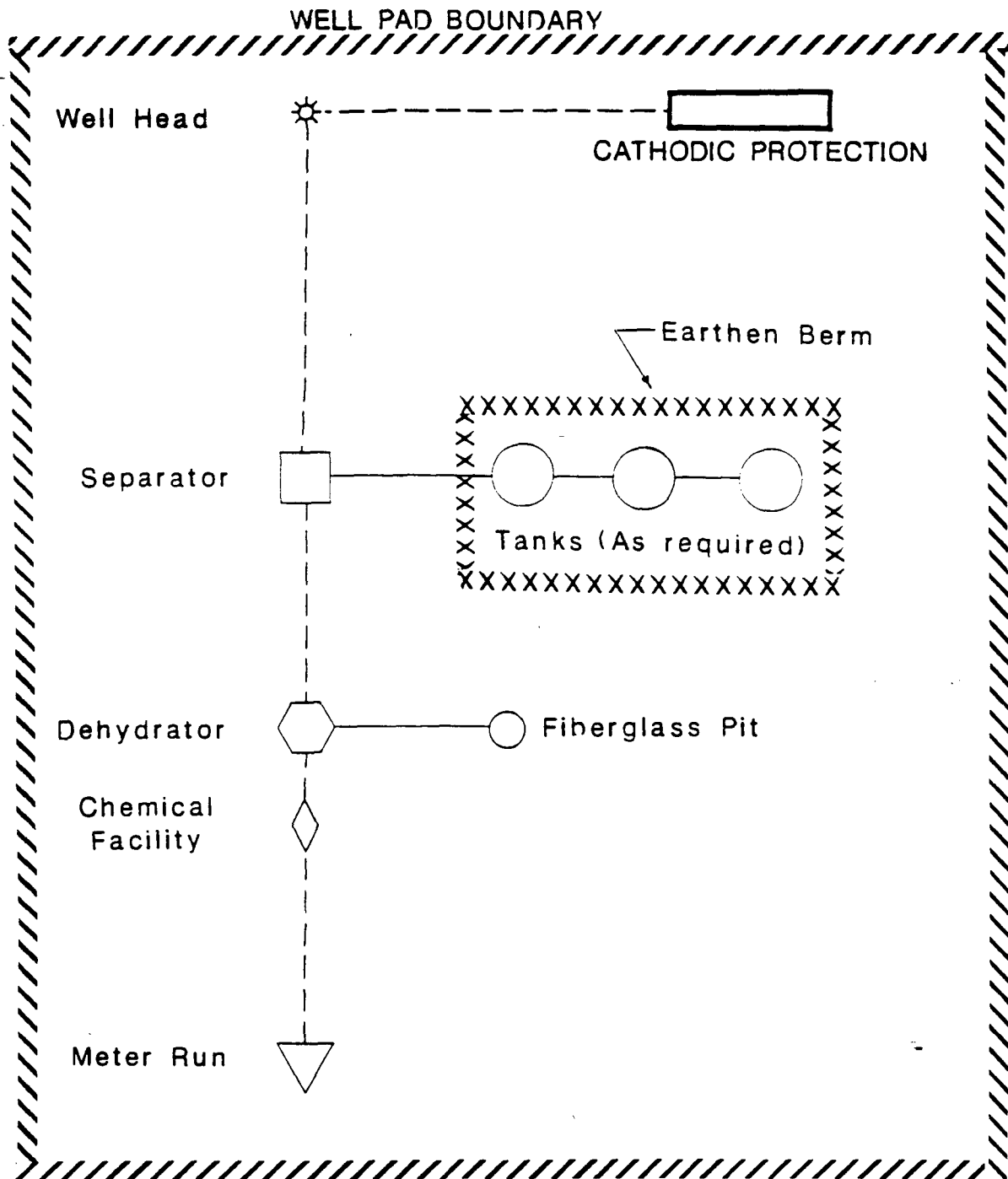
FIGURE #3



Minimum choke manifold configuration for a typical Fruitland Coal well from surface to TD. 2", 2000 psi working pressure equipment with two chokes.

LONG STRING FCW BORE

UPDATED 9/8/11



MERIDIAN OIL

ANTICIPATED
PRODUCTION FACILITIES
FOR A
FRUITLAND WELL

J. Falconi

4/28/89

UNITED STATES
DEPARTMENT OF THE INTERIOR
BUREAU OF LAND MANAGEMENT

APPLICATION FOR PERMIT TO DRILL, DEEPEN, OR PLUG BACK

1a. TYPE OF WORK
DRILL
1b. TYPE OF WELL

RECEIVED

JUN 19 1989

2. OPERATOR
MERIDIAN OIL INC. OIL CONSERVATION DIV.
SANTA FE

3. ADDRESS & PHONE NO. OF OPERATOR
P O BOX 4289
FARMINGTON, NM 87499

4. LOCATION OF WELL
1110'N 1835'E

RECEIVED

JUN 06 1989

OIL CON. DIV.

5. LEASE NUMBER
NM-011393
6. IF INDIAN, ALL. OR TRIBE NAME

7. UNIT AGREEMENT NAME

8. FARM OR LEASE NAME
CLEVELAND

9. WELL NO.
222

10. FIELD, POOL, OR WILDCAT
BASIN FRUITLAND COAL

11. SEC. T. R. M OR BLK.
SEC. 20 T27N R09W NMPM

14. DISTANCE IN MILES FROM NEAREST TOWN
20 miles S. of Blanco NM

12. COUNTY 13. STATE
SAN JUAN NM

15. DISTANCE FROM
PROPOSED LOCATION 1110'
TO NEAREST PROPERTY
OR LEASE LINE.

16. ACRES IN LEASE 17. ACRES ASSIGNED TO WELL
1280 E/320.00

18. DISTANCE FROM
PROPOSED LOCATION
TO NEAREST WELL DR. 800'
COMPL., OR APPLIED
FOR ON THIS LEASE.

19. PROPOSED DEPTH 20. ROTARY OR CABLE TOOLS
2248' ROTARY

This action is subject to technical and
procedural review pursuant to 43 CFR 3165.3
and appeal pursuant to 43 CFR 3165.4.

21. ELEVATIONS (DF, FT, GR, ETC.)
6408'GL

22. APPROX. DATE WORK WILL START

23. PROPOSED CASING AND CEMENTING PROGRAM

"Approval of this action ~~does not~~ OPERATIONS PLAN
not warrant that the applicant
holds legal or equitable rights
or title to this lease."

DRILLING OPERATIONS AUTHORIZED ARE
SUBJECT TO COMPLIANCE WITH ATTACHED
"GENERAL REQUIREMENTS".

24. AUTHORIZED BY: Regan Bradford
REGULATORY AFFAIRS

5-18-89
DATE

PERMIT NO. _____ APPROVAL DATE _____

APPROVED
AS AMENDED

APPROVED BY _____ TITLE _____ DATE _____

NOTE: THIS FORMAT IS ISSUED IN LIEU OF US BLM FORM 3160-3 AREA MANAGER

NMOCD

Well Name: 222 CLEVELAND
 Sec. 20 T27N R09W
 BASIN FRUITLAND COAL

1110'N 1835'E
 SAN JUAN NEW MEXICO
 Elevation 6408'GL

Formation tops: Surface- Nacimiento
 Ojo Alamo- 1317
 Kirtland- 1465
 Fruitland- 2015
 Fruitland Coal Top- 2083
 Fruitland Coal Base- 2247
 Intermediate TD- 2063
 Total Depth- 2248
 Pictured Cliffs- 2253

Logging Program: Mud logs from intermediate to total depth.

Mud Program:	Interval	Type	Weight	Visc.	Fl. Loss
	0 - 200	Spud	8.4 - 8.9	40-50	no control
	200 - 2063	Non-dispersed	8.4 - 9.1	30-60	no control
	2063 - 2248	Formation Water	8.4		no control

Casing Program:	Hole Size	Depth Interval	Csg. Size	Weight	Grade
	12 1/4"	0 - 200	9 5/8"	32.3#	H-40
	8 3/4"	0 - 2063	7"	20.0#	K-55
	6 1/4"	2013 - 2248	5 1/2"	15.5#	K-55
Tubing Program:		0 - 2248	2 7/8"	6.5#	J-55

Float Equipment: 9 5/8" surface casing - saw tooth guide shoe.

7" intermediate casing - guide shoe and self-fill insert float valve. Three centralizers run every other joint above shoe. Run insert float one joint above the guide shoe.

5 1/2" production casing - float shoe on bottom and a pre-drilled liner run to the 7" casing with a minimum 50' overlap. Liner hanger is a double slip grip type.

Wellhead Equipment: 9 5/8" x 7" x 2 7/8" x 11" 3000 psi xmas tree assembly.

Cementing:

9 5/8" surface casing - cement with 106 sacks of class "B" cement with 1/4# flocele/sack and 3% calcium chloride (125 cu ft. of slurry, 100% excess to circulate to surface). WOC 12 hours. Test casing to 600 psi for 30 minutes.

7" intermediate casing - lead with 100 sacks of 65/35 class "B" poz with 6% gel, 2% calcium chloride and 1/2 cu ft. Perlite/sack (10.3 gallons of water/sack) tail with 100 sacks of class "B" with 2% calcium chloride. 310 cu ft. of slurry, of sufficient volume to circulate to surface. As necessary, run temperature survey at 8 hours. WOC 12 hours. Test casing to 1500 psi for 30 minutes.

5 1/2" liner - do not cement.

Submit to Appropriate
District Office
State Leases - 4 copies
Fee Leases - 3 copies

State of New Mexico
Energy, Minerals and Natural Resources Department

Form C-102
Revised 1-1-89

OIL CONSERVATION DIVISION

DISTRICT I
P.O. Box 1980, Hobbs, NM 88240

P.O. Box 2088
Santa Fe, New Mexico 87504-2088

DISTRICT II
P.O. Drawer DD, Artesia, NM 88210

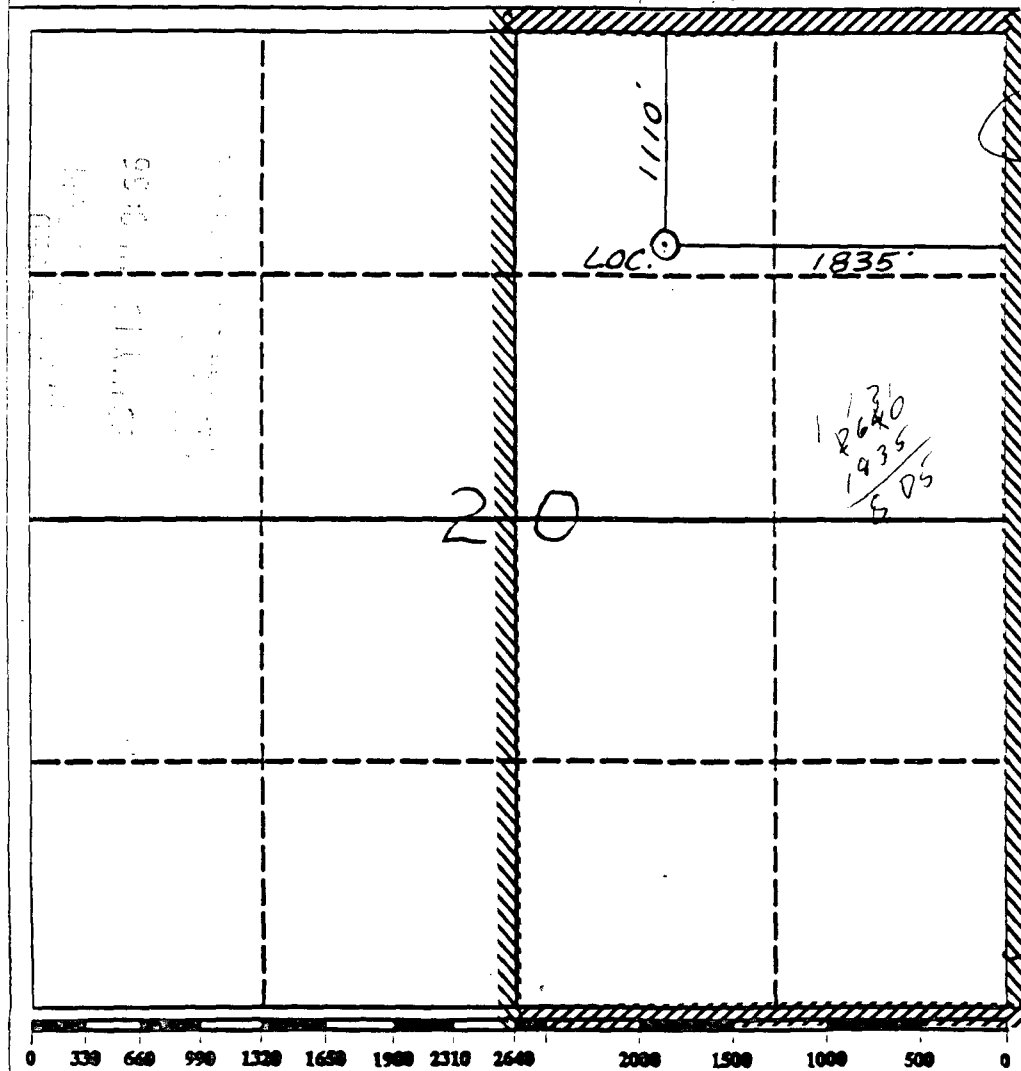
DISTRICT III
1000 Rio Brazos Rd., Aztec, NM 87410

WELL LOCATION AND ACREAGE DEDICATION PLAT

All Distances must be from the outer boundaries of the section

Operator Meridian Oil Inc.			Lease Cleveland (NM-011393)		Well No. 222
Unit Locar B	Section 20	Township 27 North	Range 9 West	County NMPM San Juan	
Actual Footage Location of Well: 1110 feet from the North line and 1835 feet from the East line					
Ground level Elev. 6408	Producing Formation Fruitland Coal		Pool Basin	Dedicated Acreage: 320.0 Acres	

- Outline the acreage dedicated to the subject well by colored pencil or machine marks on the plat below.
- If more than one lease is dedicated to the well, outline each and identify the ownership thereof (both as to working interest and royalty).
- If more than one lease of different ownership is dedicated to the well, have the interest of all owners been consolidated by communitization, unitization, force-pooling, etc.?
☐ Yes ☐ No If answer is "yes" type of consolidation _____
If answer is "no" list the owners and tract descriptions which have actually been consolidated. (Use reverse side of this form if necessary.)
No allowable will be assigned to the well until all interests have been consolidated (by communitization, unitization, forced-pooling, or otherwise) or until a non-standard unit, eliminating such interest, has been approved by the Division.



OPERATOR CERTIFICATION

I hereby certify that the information contained herein is true and complete to the best of my knowledge and belief.

Peggy Bradfield
Signature

Peggy Bradfield

Printed Name
Regulatory Affairs

Position
Meridian Oil Inc.

Company
5-17-89

Date

SURVEYOR CERTIFICATION

I hereby certify that the well location shown on this plat was plotted from field notes or actual surveys made by me or under my supervision, and that the same is true and correct to the best of my knowledge and belief.

4-22-89
Date Surveyed
Noble C. Edwards

Signature of Sealer
Professional Surveyor

Certification No.
6857