



Chevron U.S.A. Inc.

P.O. Box 670, Hobbs, NM 86401

CONSERVATION DIVISION

RECEIVED

June 21, 1990

'90 JUN 27 AM 9 33

R. C. Anderson
Division Manager
Production Department
Hobbs Division

ADMINISTRATIVE APPLICATION FOR
UNORTHODOX GAS WELL LOCATION
AND SIMULTANEOUS DEDICATION
BLINEBRY (PRO GAS) (CONSOLIDATED)
2068' FSL AND 2068' FEL
SECTION 34, T-21-S, R-37-E, NMPM
LEA COUNTY, NEW MEXICO

State Of New Mexico
Energy, Minerals & Natural Resources Dept.
Oil Conservation Division
P. O. Box 2088
Santa Fe, New Mexico 87504

Attention: Mr. William J. LeMay - Director

Gentlemen:

Chevron U.S.A. Inc. respectfully requests your approval of our administrative application for an unorthodox gas well location in the Blinebry (Pro Gas) (Consolidated) Pool. We are also requesting your approval to simultaneously dedicate this 160-acre proration unit to our Mark Owen Wells No. 3 and 4, located in letter units I and J of Section 34, respectively.

Chevron has recently recompleted this well within the Blinebry formation which has resulted in this wells' GOR exceeding 50,000:1, making it a gas well. This makes the current location of 2068' FSL and 2068' FEL, Section 34, T-21-S, R-37-E, NMPM an unorthodox location in that it is less than 660' from the outer boundary of the proration unit.

Chevron therefore, respectfully requests your approval of this administrative application under the provisions of Rule 104 (F). Attached is a map showing offset operators and a Form C-102. A copy of this letter and attachments are being furnished to the Offset Operators by Certified Mail, as notice of this application.

Yours very truly,

R. C. Anderson for

R. C. ANDERSON

AWB/awb
Attachments
Enclosures

cc: NMOCD - Hobbs

CHEVRON U.S.A. INC.
Mark Owen Lease

Application For An Unorthodox
Gas Well Location
and
Simultaneous Dedication of Acreage
Blinebry (Pro Gas) (Consolidated)
2068' FSL and 2068' FEL
Section 34, T21S, R37E
Lea County, New Mexico

OFFSET OPERATORS

Amoco Production Company
P.O. Box 3092
Houston, TX 77253

Exxon Company, U.S.A.
P.O. Box 1600
Midland, TX 79702-1600

Mobil Producing Texas & New Mexico
P.O. Box 633
Midland, TX 79702

Marathon Oil Company
P.O. Box 552
Midland, TX 79702

J. H. Hendrix Corp.
223 W. Wall, Ste. 525
Midland, TX 79701

Conoco Inc.
P.O. Box 460
Hobbs, NM 88240

Submit to Appropriate
District Office
State Lease - 4 copies
Fee Lease - 3 copies

State of New Mexico
Energy, Minerals and Natural Resources Department

Form C-102
Revised 1-1-89

OIL CONSERVATION DIVISION

P.O. Box 2088
Santa Fe, New Mexico 87504-2088

DISTRICT I
P.O. Box 1980, Hobbs, NM 88240

DISTRICT II
P.O. Drawer DD, Artesia, NM 88210

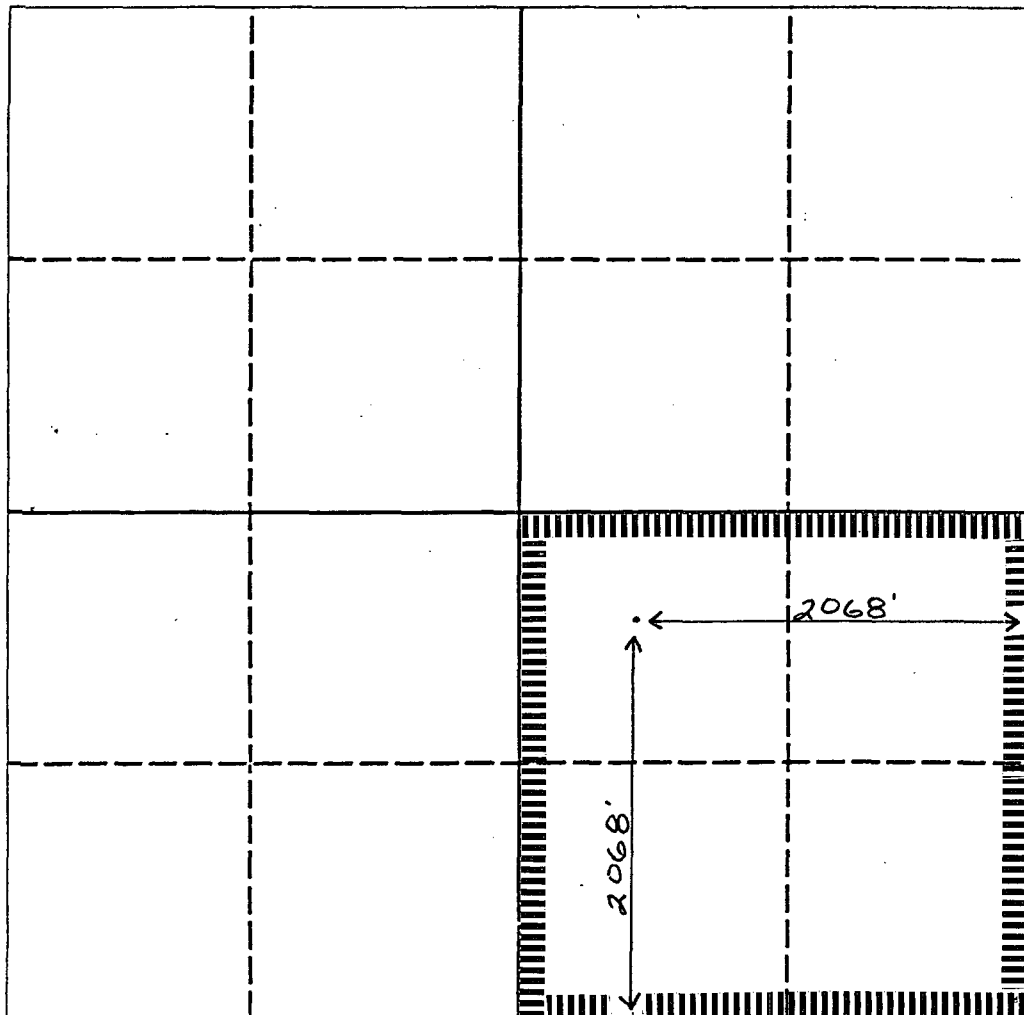
DISTRICT III
1000 Rio Brazos Rd., Aztec, NM 87410

WELL LOCATION AND ACREAGE DEDICATION PLAT

All Distances must be from the outer boundaries of the section

Operator Chevron U.S.A. Inc.			Lease Mark Owen		Well No. 4
Unit Letter J	Section 34	Township 21S	Range 37E	County NMPM Lea	
Actual Footage Location of Well: 2068 feet from the South line and 2068 feet from the East line					
Ground level Elev. 3428'	Producing Formation Blinebry		Pool Blinebry		Dedicated Acreage: 160 Acres

1. Outline the acreage dedicated to the subject well by colored pencil or hatchure marks on the plat below.
2. If more than one lease is dedicated to the well, outline each and identify the ownership thereof (both as to working interest and royalty).
3. If more than one lease of different ownership is dedicated to the well, have the interest of all owners been consolidated by communitization, unitization, force-pooling, etc.?
☐ Yes ☐ No If answer is "yes" type of consolidation _____
If answer is "no" list the owners and tract descriptions which have actually been consolidated. (Use reverse side of this form if necessary). _____
No allowable will be assigned to the well until all interests have been consolidated (by communitization, unitization, forced-pooling, or otherwise) or until a non-standard unit, eliminating such interest, has been approved by the Division.



0 330 660 990 1320 1650 1980 2310 2640 2000 1500 1000 500 0

OPERATOR CERTIFICATION

I hereby certify that the information contained herein is true and complete to the best of my knowledge and belief.

Signature
M. E. Akins 6/22/90
Printed Name
M. E. Akins
Position
Staff Drlg. Engr.
Company
Chevron U.S.A. Inc.
Date
6-21-90

SURVEYOR CERTIFICATION

I hereby certify that the well location shown on this plat was plotted from field notes of actual surveys made by me or under my supervision, and that the same is true and correct to the best of my knowledge and belief.

Date Surveyed
Signature & Seal of Professional Surveyor
Certificate No.

Submit to Appropriate
District Office
State Lease - 4 copies
Fee Lease - 3 copies

State of New Mexico
Energy, Minerals and Natural Resources Department

Form C-102
Revised 1-1-89

OIL CONSERVATION DIVISION

P.O. Box 2088
Santa Fe, New Mexico 87504-2088

DISTRICT I

P.O. Box 1980, Hobbs, NM 88240

DISTRICT II

P.O. Drawer DD, Artesia, NM 88210

DISTRICT III

1000 Rio Brazos Rd., Aztec, NM 87410

WELL LOCATION AND ACREAGE DEDICATION PLAT

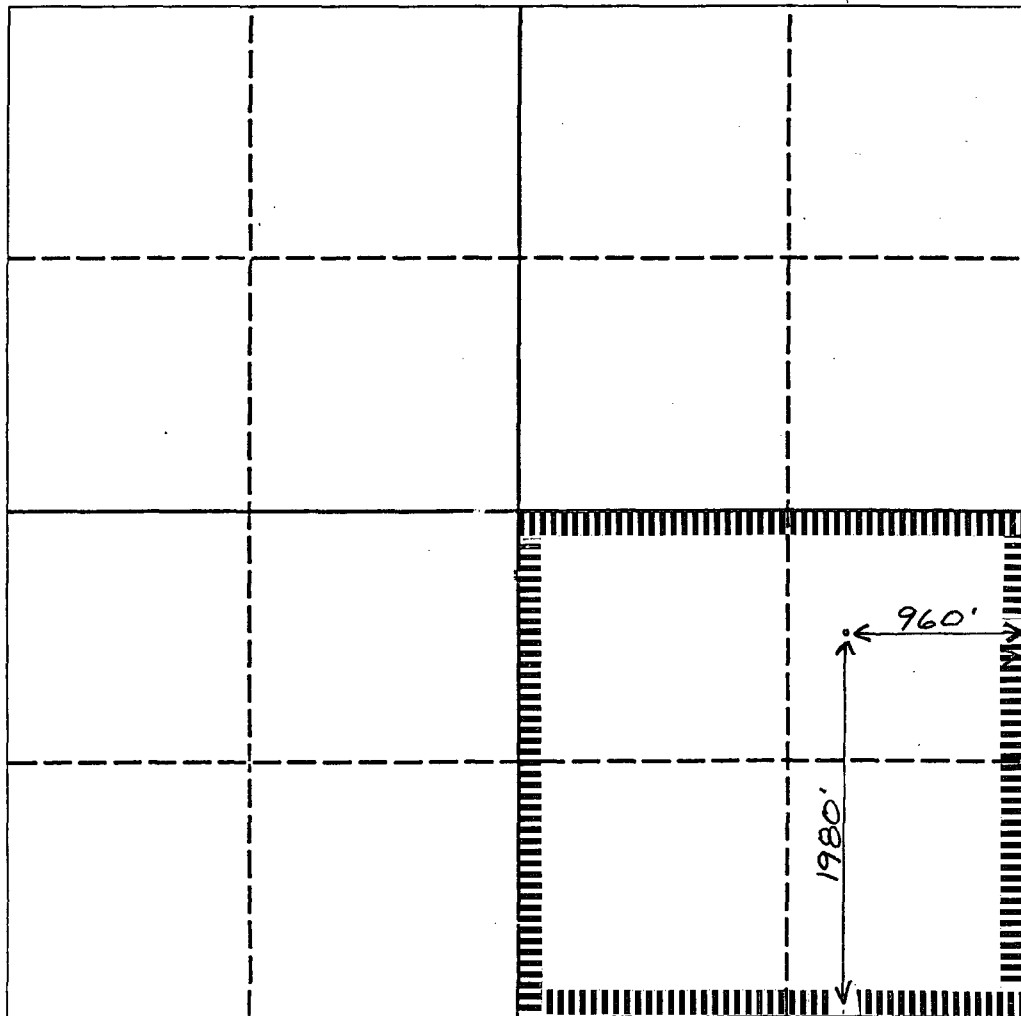
All Distances must be from the outer boundaries of the section

Operator Chevron U.S.A. Inc.			Lease Mark Owen		Well No. 3
Unit Letter I	Section 34	Township 21S	Range 37E	County NMPM Lea	

Actual Footage Location of Well:

1980 feet from the South line and 960 feet from the East line			
Ground level Elev. 3408	Producing Formation Blinebry	Pool Blinebry	Dedicated Acreage: 160 Acres

1. Outline the acreage dedicated to the subject well by colored pencil or hatchure marks on the plat below.
2. If more than one lease is dedicated to the well, outline each and identify the ownership thereof (both as to working interest and royalty).
3. If more than one lease of different ownership is dedicated to the well, have the interest of all owners been consolidated by communitization, unitization, force-pooling, etc.?
☐ Yes ☐ No If answer is "yes" type of consolidation _____
If answer is "no" list the owners and tract descriptions which have actually been consolidated. (Use reverse side of this form if necessary). _____
No allowable will be assigned to the well until all interests have been consolidated (by communitization, unitization, forced-pooling, or otherwise) or until a non-standard unit, eliminating such interest, has been approved by the Division.



OPERATOR CERTIFICATION

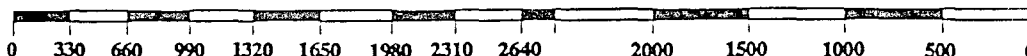
I hereby certify that the information contained herein is true and complete to the best of my knowledge and belief.

Signature <i>M. E. Akins</i> 6/22/90
Printed Name M. E. Akins
Position Staff Drlg. Engr.
Company Chevron U.S.A. Inc.
Date 6-21-90

SURVEYOR CERTIFICATION

I hereby certify that the well location shown on this plat was plotted from field notes of actual surveys made by me or under my supervision, and that the same is true and correct to the best of my knowledge and belief.

Date Surveyed
Signature & Seal of Professional Surveyor
Certificate No.



Mark Owen Lease

Application For An Unorthodox
Gas Well Location
and
Simultaneous Dedication of Acreage
Blinebry (Pro Gas) (Consolidated)
2068' FSL and 2068' FEL
Section 34, T21S, R37E
Lea County, New Mexico