

MERIDIAN OIL

August 16, 1990

Federal Express

Mr. William LeMay
New Mexico Oil Conservation Division
Post Office Box 2088
Santa Fe, New Mexico 87503

RE: Senges Com #1
990'FSL, 1090'FEL
Section 02, T-27-N, R-08-W
San Juan, New Mexico

Dear Mr. LeMay:

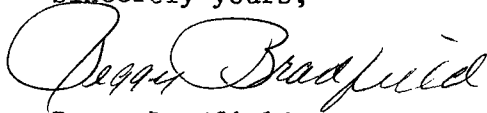
This is a request for administrative approval for a non-standard gas well location in the Basin Fruitland Pool.

Meridian Oil intends to plugback and recompleate the Senges Com #1 well from the Pictured Cliffs pool to the Basin Fruitland Coal Pool. The current location of this well is 990'FSL, 1090'FEL, Section 02, T-27-N, R-08-W, San Juan, New Mexico. The well is considered non-standard due to the NE-SW dedicated pattern established for the Basin Fruitland Coal Pool. To comply with the New Mexico Oil Conservation Division rules, Meridian is submitting the following for your approval of this non-standard location:

1. C-102 plat showing location of the well;
2. Plat showing offset owners/operators;
3. Affidavit of notification of offset owners/operators;
4. Copy of Well Completion Log for original completion.

A copy of this application is being submitted to all offset owners/operators by certified mail with a request that they furnish your Santa Fe office with a Waiver of Objection, and return one copy to this office.

Sincerely yours,


Peggy Bradfield
encl.

WAIVER

_____ hereby waives objection to Meridian Oil Inc.'s application for a non-standard location for their Senges Com #1 as proposed above.

By: _____ Date: _____

xc: Amoco Production Co.
Nassau Resources
Mesa Limited Partnership

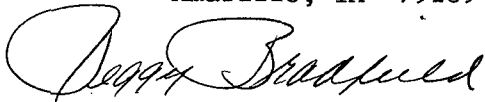
Senges Com #1
990'FSL, 1090'FEL
Section 02, T-27-N, R-08-W
San Juan, New Mexico

I hereby certify that the following offset owners/operators have been notified by certified mail of our application for administrative approval for non-standard gas well location for the plugback and recompletion of the above well.

Amoco Production Co.
P.O. Box 800
Denver, CO 80201

Nassau Resources
650 S. Cherry St., Suite 1225
Denver, CO 80222

Mesa Limited Partnership
P.O. Box 2009
Amarillo, TX 79189-2009



Peggy Bradfield
August 16, 1990

San Juan County
State of New Mexico

My commission expires August 17, 1992

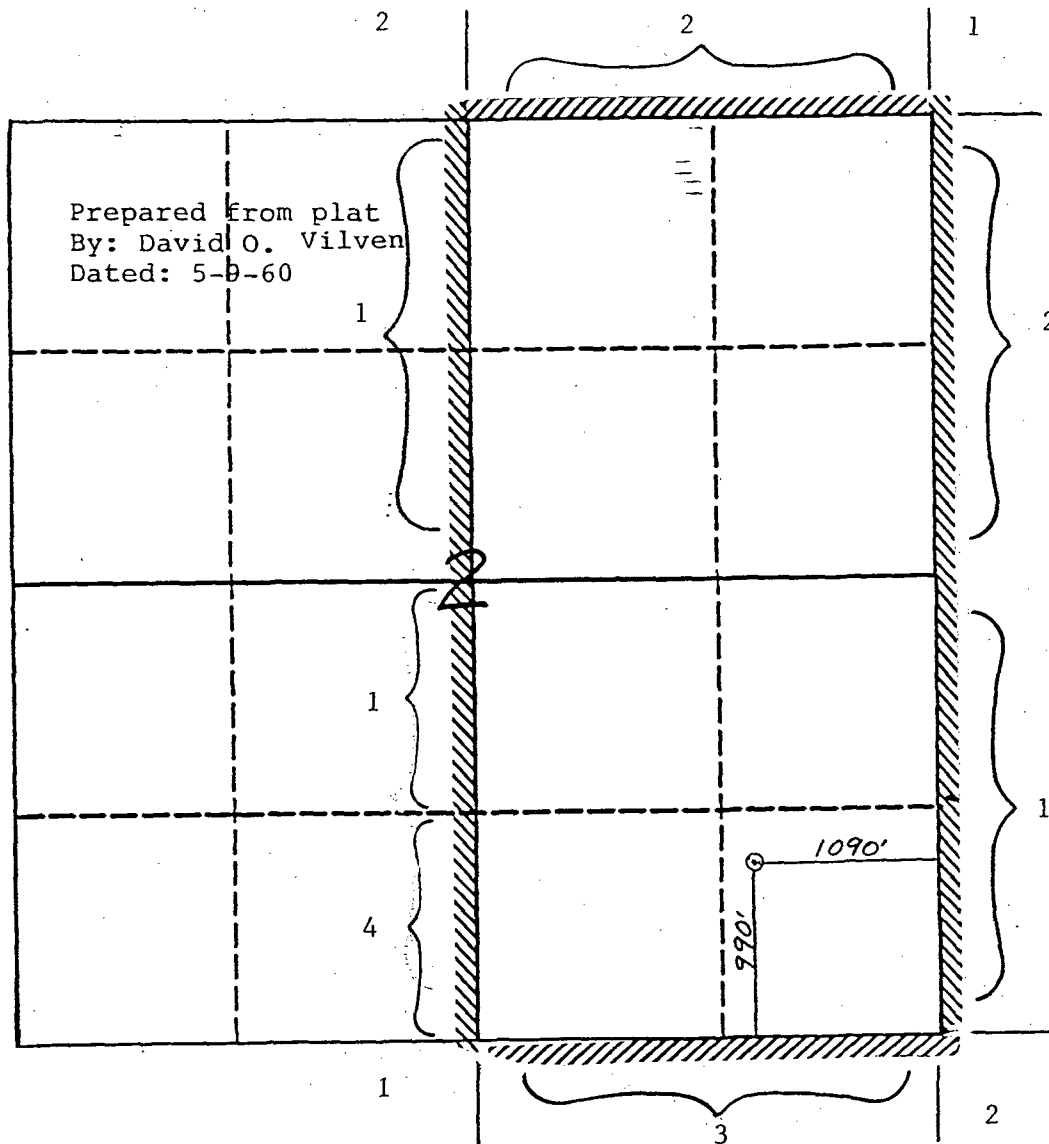
MERIDIAN OIL INC

Well Name Senges Com #1

Footage 990' FSL; 1090' FEL

APPLICATION FOR NON-STANDARD LOCATION

County San Juan State New Mexico Section 2 Township 27N Range 8W



Remarks 1) Meridian Oil Inc.
2) Amoco Production Co.
3) Nassa Resources
4) Mesa Limited Partnership

Submit to Appropriate
District Office
State Lease - 4 copies
Fee Lease - 3 copies

State of New Mexico
Energy, Minerals and Natural Resources Department

Form C-102
Revised 1-1-89

OIL CONSERVATION DIVISION

DISTRICT I
P.O. Box 1980, Hobbs, NM 88240

P.O. Box 2088

Santa Fe, New Mexico 87504-2088

DISTRICT II
P.O. Drawer 00, Artesia, NM 88210

DISTRICT III
1000 Rio Brazos Rd., Aztec, NM 87410

WELL LOCATION AND ACREAGE DEDICATION PLAT

All Distances must be from the outer boundaries of the section

Operator Meridian Oil Inc.			Lease Senges Com (E-4073-2)		Well No. 1
Unit Letter P	Section 2	Township 27 North	Range 8 West	County NMPM San Juan	
Actual Footage Location of Well: 990 feet from the South line and 1090 feet from the East line					
Ground level Elev. 6639'		Producing Formation Fruitland Coal		Pool Basin	
				Dedicated Acreage: 321.2 Acres	

1. Outline the acreage dedicated to the subject well by colored pencil or hatchure marks on the plat below.
2. If more than one lease is dedicated to the well, outline each and identify the ownership thereof (both as to working interest and royalty).
3. If more than one lease of different ownership is dedicated to the well, have the interest of all owners been consolidated by communitization, unitization, force-pooling, etc.?
☐ Yes ☐ No If answer is "yes" type of consolidation communitization agreement will be obtained
If answer is "no" list the owners and tract descriptions which have actually been consolidated. (Use reverse side of this form if necessary.)
No allowable will be assigned to the well until all interests have been consolidated (by communitization, unitization, forced-pooling, or otherwise) or until a non-standard unit, eliminating such interest, has been approved by the Division.

Prepared from plat
By: David O. Vilven
Dated: 5-9-60

OPERATOR CERTIFICATION

I hereby certify that the information contained herein is true and complete to the best of my knowledge and belief.

Signature
Peggy Bradfield
Printed Name
Regulatory Affairs
Position
Meridian Oil Inc.
Company

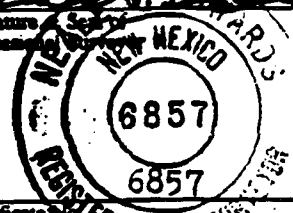
Date

SURVEYOR CERTIFICATION

I hereby certify that the well location shown on this plat was plotted from field notes of actual surveys made by me or under my supervision, and that the same is true and correct to the best of my knowledge and belief. 8-8-90

Date Surveyed

Signature of Surveyor
Professional Surveyor



Certificate Number

Neale C. Edwards

0 300 600 900 1200 1500 1800 2100 2400 2700 3000 3300 3600 3900 4200 4500 4800 5100 5400 5700 6000

						X	

NEW MEXICO OIL CONSERVATION COMMISSION

Santa Fe, New Mexico

WELL RECORD

Mail to District Office, Oil Conservation Commission, to which Form C-101 was sent not later than twenty days after completion of well. Follow instructions in Rules and Regulations of the Commission. Submit in **QUINTUPLICATE**. If State Land submit 6 Copies

**AREA 640 ACRES
LOCATE WELL CORRECTLY**

El Paso Natural Gas Company
(Company of Operator)

Senges Pool Unit
(Lease)

Well No. 1, in S.E. 1/4 of S.E. 1/4, of Sec. 2, T. 27 N, R. 8 W, NMPM

So. Blanco Pictured Cliffs Pool, San Juan County.

Well is 990 feet from South line and 1090 feet from East line

of Section 2. If State Land the Oil and Gas Lease No. is E - 4073 - 1

Drilling Commenced 5-30, 1960 Drilling was Completed 6-3-, 1960

Name of Drilling Contractor Century Drilling Company

Address

Elevation above sea level at Top of Tubing Head 6639 The information given is to be kept confidential until

, 19

OIL SANDS OR ZONES

No. 1, from 2995 to 3100 (G) No. 4, from to
No. 2, from to No. 5, from to
No. 3, from to No. 6, from to

IMPORTANT WATER SANDS

Include data on rate of water inflow and elevation to which water rose in hole.

No. 1, from to feet.

No. 2, from to feet.

No. 3, from to feet.

No. 4, from to feet.

CASING RECORD

SIZE	WEIGHT PER FOOT	NEW OR USED	AMOUNT	KIND OF SHOE	CUT AND PULLED FROM	PERFORATIONS	PURPOSE
8 5/8"	24	New	97'	Howco			surface
2 7/8"	6.4	New	3104	Baker			prod casing

MUDDING AND CEMENTING RECORD

	SIZE OF HOLE	SIZE OF CASING	WHERE SET	NO. SACKS OF CEMENT	METHOD USED	MUD GRAVITY	AMOUNT OF MUD USED
	13 3/4"	8 5/8"	110	84	Circulated		
7	7 7/8" & 6 1/4"	2 7/8"	3116	90	single stage		

RECORD OF PRODUCTION AND STIMULATION

(Record the Process used, No. of Qts. or Gals. used, interval treated or shot.)

Water frac. P.C. w/ 17,734 gal. water & 15,000 # sand. B.D.P. 2700 #, max. pr. 3100 #,
abs. avg. tr. pr. 2400 #. I.R.-14.6 B.P.M. Flush 1743 gal. 1 % Calcium Chloride 2 in all
frac. water & 7 # J-98/1000 gal. water.

Result of Production Stimulation.....A.O.F. - 197 MCF/D; Ch. Volume - 197 MCF/D

...Depth Cleaned Out.....3069'