

MERIDIAN OIL

August 16, 1990

Federal Express

Mr. William LeMay
New Mexico Oil Conservation Division
Post Office Box 2088
Santa Fe, New Mexico 87503

RE: Cleveland #7
1650'FSL, 1650'FEL
Section 21, T-27-N, R-09-W
San Juan, New Mexico

Dear Mr. LeMay:

This is a request for administrative approval for a non-standard gas well location in the Basin Fruitland Pool.

Meridian Oil intends to plugback and recomplete the Cleveland #7 well from the Pictured Cliffs pool to the Basin Fruitland Coal Pool. The current location of this well is 1650'FSL, 1650'FEL, Section 21, T-27-N, R-09-W, San Juan, New Mexico. The well is considered non-standard due to the NE-SW dedicated pattern established for the Basin Fruitland Coal Pool. To comply with the New Mexico Oil Conservation Division rules, Meridian is submitting the following for your approval of this non-standard location:

1. C-102 plat showing location of the well;
2. Plat showing offset owners/operators;
3. Copy of Well Completion Log^o for original completion.

All surrounding lands are operated and owned by Meridian Oil Inc.

Sincerely yours,



Peggy Bradfield
encl.

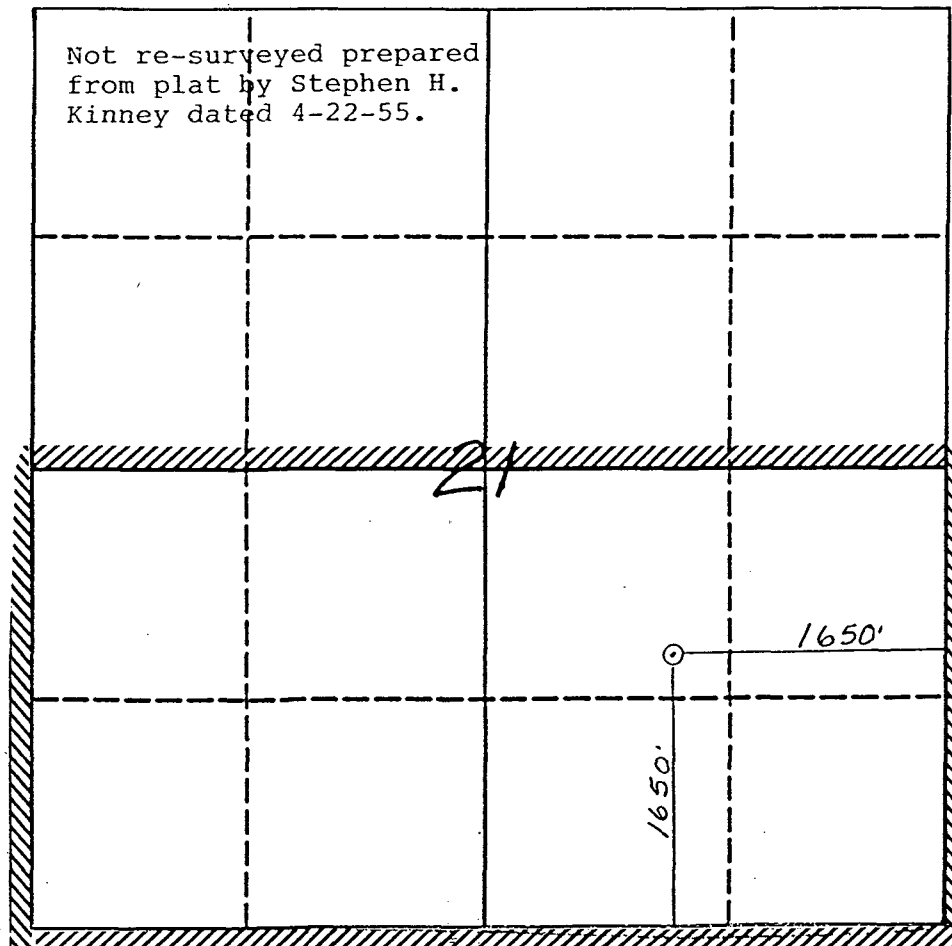
MERIDIAN OIL INC

Well Name Cleveland #7

Footage 1650' FSL; 1650' FEL

APPLICATION FOR NON-STANDARD LOCATION

County San Juan State New Mexico Section 21 Township 27N Range 9W



Remarks All Surrounding Lands are owned and operated by Meridian Oil Inc.

Submit to Appropriate
District Office
State Lease - 4 copies
Fee Lease - 3 copies

State of New Mexico
Energy, Minerals and Natural Resources Department

Form C-102
Revised 1-1-89

OIL CONSERVATION DIVISION

DISTRICT I
P.O. Box 1980, Hobbs, NM 88240

P.O. Box 2088

Santa Fe, New Mexico 87504-2088

DISTRICT II
P.O. Drawer DD, Artesia, NM 88210

DISTRICT III
1000 Rio Brazos Rd., Aztec, NM 87410

WELL LOCATION AND ACREAGE DEDICATION PLAT

All Distances must be from the outer boundaries of the section

Operator Meridian Oil Inc.			Lease Cleveland		Well No. 7
Unit Letter J	Section 21	Township 27 North	Range 9 West	County NMPM San Juan	
Actual Footage Location of Well: 1650 feet from the South line and 1650 feet from the East line					
Ground level Elev. 6263'	Producing Formation		Pool	Dedicated Acreage: Acres	

1. Outline the acreage dedicated to the subject well by colored pencil or hatchure marks on the plat below.

2. If more than one lease is dedicated to the well, outline each and identify the ownership thereof (both as to working interest and royalty).

3. If more than one lease of different ownership is dedicated to the well, have the interest of all owners been consolidated by communitization, unitization, force-pooling, etc.?

☐ Yes ☐ No If answer is "yes" type of consolidation

If answer is "no" list the owners and tract descriptions which have actually been consolidated. (Use reverse side of this form if necessary.)

No allowable will be assigned to the well until all interests have been consolidated (by communitization, unitization, forced-pooling, or otherwise) or until a non-standard unit, eliminating such interest, has been approved by the Division.

Not re-surveyed prepared
from plat by Stephen H.
Kinney dated 4-22-55.

OPERATOR CERTIFICATION

I hereby certify that the information
contained herein is true and complete to the
best of my knowledge and belief.

Signature

Printed Name

Position

Company

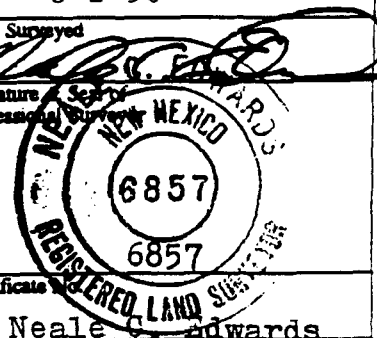
Date

SURVEYOR CERTIFICATION

I hereby certify that the well location shown
on this plat was plotted from field notes of
actual surveys made by me or under my
supervision, and that the same is true and
correct to the best of my knowledge and
belief. 8-2-90

Date Surveyed

Signature of
Professional Surveyor



Certificate No.

Neale C. Edwards

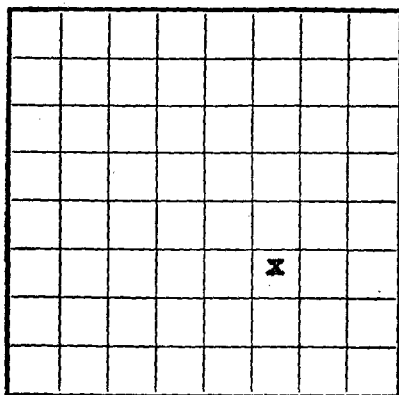
0 330 660 990 1320 1650 1980 2310 2640 2000 1500 1000 500 0

New Mexico

U. S. LAND OFFICE **011393**

SERIAL NUMBER

LEASE OR PERMIT TO PROSPECT



LOCATE WELL CORRECTLY

UNITED STATES
DEPARTMENT OF THE INTERIOR
GEOLOGICAL SURVEY

LOG OF OIL OR GAS WELL

Company **J. Glenn Turner** Address **Box 728 - Farmington, New Mexico**
 Lessor or Tract **Cleveland** Field **Fulcher-Kutz Ext.** State **New Mexico**
 Well No. **2-21** Sec. **21** T. **27-N** R. **9-W** Meridian **N.M.P.M.** County **San Juan**
 Location **1650** ft. **(N)** of **S** Line and **1650** ft. **(E)** of **E** Line of **Sec. 21** Elevation **6271**
 (Elevation floor relative to sea level)
 The information given herewith is a complete and correct record of the well and all work done thereon
 so far as can be determined from all available records.
 Signed **C. Deeson Neal** Agent in Farmington
 Date **August 24, 1955** Title

The summary on this page is for the condition of the well at above date.

Commenced drilling **July 9, 1955**, 19..... Finished drilling **August 11, 1955**, 19.....

OIL OR GAS SANDS OR ZONES

(Denote gas by G)

No. 1, from **2145** to **2227** No. 4, from to
 No. 2, from to No. 5, from to
 No. 3, from to No. 6, from to

IMPORTANT WATER SANDS

No. 1, from to No. 3, from to
 No. 2, from to No. 4, from to

CASING RECORD

Size casing	Weight per foot	Threads per inch	Make	Amount	Kind of shoe	Cut and pulled from	Perforated		Purpose
							From—	To—	
8-5/8"	21 1/2	8 rd. thd.	J-55	83'	None				Surface
5-1/2"	11 1/2	8 rd. thd.	J-55	2155'	Halliburton				Long String
3-1/2"	11 1/2	8 rd. thd.	None	2187'	None				Production

HISTORY OF OIL OR GAS WELL

MUDDING AND CEMENTING RECORD

Size casing	Where set	Number sacks of cement	Method used	Mud gravity	Amount of mud used
8-5/8"	93'	80	Halliburton		Mostly water
5-1/2"	2155'	100	Halliburton		Mostly water

PLUGS AND ADAPTERS

Heaving plug—Material Length Depth set