



Chevron U.S.A. Inc.
P.O. Box 1150, Midland, TX 79702

NSL-2969
OIL CONSERVATION DIVISION
RECEIVED

'90 DEC 10 AM 10 07

December 4, 1990

PROPOSED REPLACEMENT INJECTION WELL
EUNICE MONUMENT OIL POOL
~~EUNICE MONUMENT SOUTH UNIT B~~
~~WELL NUMBER 855~~
LEA COUNTY, NEW MEXICO

New Mexico Oil Conservation Division
310 Old Santa Fe Trail, Room 206
Santa Fe, New Mexico 87503

Attention: William J. LeMay, Director

Gentlemen:

The New Mexico District of Chevron USA Inc. respectfully requests your administrative approval for an unorthodox location for the subject proposed replacement injection well. This well will replace a well in the proration unit, not completed in the Eunice Monument Oil Pool, that will not be tendered to the Unit by the original operator. We further request that you waive the 20 day waiting period requirement of Rule 104 (F) (IV) since the subject proration unit of the unorthodox location is surrounded by proration units included in the Unit and operated by Chevron.

The proposed location for this Eunice Monument South Unit B injection well, 1450' FNL, 870' FWL, Sec. 11, T20S, R36E, Unit E, as shown on the attached plat, will be in an approved waterflood project, under Form C-108 submitted 7/9/90, Order Nos. R-7765-B, R-7766-A, and R-7767-A (copies enclosed). This location will also meet the spacing requirements of Rule 104 (F) (I) which states that a well will be no closer than 330 feet to the outer boundary of the unitized area, and no closer than 10 feet to any quarter-quarter section line. The location was chosen to eliminate conflict with existing pipelines and other surface facilities that prevent us from drilling in an orthodox location.

Chevron has notified all working interest owners in the Eunice Monument South Unit B and expects to receive sufficient approval by mid-December, thereby satisfying Unit Operating Agreement requirements. Also, all directly offsetting unit wells, completed in the Eunice Monument Oil Pool, and their respective proration units are included in the Unit and are operated by Chevron.

Based upon the foregoing information, Chevron requests your administrative approval of the attached application for permit to drill this well at an unorthodox location. To enable Chevron to drill this proposed well this year, we are further requesting that

the Oil Conservation Division waive the 20 day waiting requirements in granting this administrative application.

For further information regarding this matter, please contact A. W. Bohling or S. P. McDonald at (915) 687-7100. Your prompt consideration will be greatly appreciated.

Sincerely,


R. C. ANDERSON

SPM/AWB

Attachments

cc. Oil Conservation Division
District 1
P. O. Box 1980
Hobbs, New Mexico 88240
Attn: Mr. Jerry T. Sexton

Kellahin, Kellahin and Aubrey
Attorneys at Law
P. O. Box 2265
Santa Fe, New Mexico 87504-2265
Attn: Mr. Tom Kellahin

Submit to Appropriate
District Office
State Lease - 6 copies
Fee Lease - 5 copies

State of New Mexico
Energy, Minerals and Natural Resources Department

Form C-101
Revised 1-1-89

OIL CONSERVATION DIVISION

P.O. Box 2088
Santa Fe, New Mexico 87504-2088

DISTRICT I
P.O. Box 1980, Hobbs, NM 88240

DISTRICT II
P.O. Drawer DD, Artesia, NM 88210

DISTRICT III
1000 Rio Brazos Rd., Aztec, NM 87410

API NO. (assigned by OCC on New Wells)

5. Indicate Type of Lease

STATE ☐

FEE ☒

6. State Oil & Gas Lease No.

APPLICATION FOR PERMIT TO DRILL, DEEPEN, OR PLUG BACK

1a. Type of Work:

DRILL ☒

RE-ENTER ☐

DEEPEN ☐

PLUG BACK ☐

b. Type of Well:

OIL
WELL ☒

GAS
WELL ☐

OTHER ☐

SINGLE
ZONE ☒

MULTIPLE
ZONE ☐

2. Name of Operator

CHEVRON USA INC

7. Lease Name or Unit Agreement Name

EUNICE Monument South Unit (EXP-B)

8. Well No.

855

3. Address of Operator

P.O. Box 1150 Midland TX 79702 ATTN: ED DOHERTY

9. Pool name or Wildcat

EUNICE Monument GRAYBURG

4. Well Location

Unit Letter

E : 870

Feet From The

West

Line and

1450

Feet From The

North

Line

Section

11

Township

20S

Range

36E

NMPM

LEA

County

10. Proposed Depth

4200

11. Formation

GRAYBURG

12. Rotary or C.T.

ROTARY

13. Elevations (Show whether DF, RT, GR, etc.)

3585.6 GR

14. Kind & Status Plug Bond

BLANKET

15. Drilling Contractor

UNKNOWN

16. Approx. Date Work will start

17.

PROPOSED CASING AND CEMENT PROGRAM

SIZE OF HOLE

SIZE OF CASING

WEIGHT PER FOOT

SETTING DEPTH

SACKS OF CEMENT

EST. TOP

12 1/4

8 5/8

23

1200

800 SX.

SURF.

7 7/8

5 1/2

15.5

4200

900 SX.

SURF.

MUD PROGRAM:

0 - 1200 FW Spud mud 9.0 ppg.
1200 - 4200 BW STARCH 10"

BOPE Equipment:

3000 psi WP SEE ATTACHED CHEVRON CLASS III BOP DRAWING

IN ABOVE SPACE DESCRIBE PROPOSED PROGRAM: IF PROPOSAL IS TO DEEPEN OR PLUG BACK, GIVE DATA ON PRESENT PRODUCTIVE ZONE AND PROPOSED NEW PRODUCTIVE ZONE. GIVE BLOWOUT PREVENTER PROGRAM, IF ANY.

I hereby certify that the information above is true and complete to the best of my knowledge and belief.

SIGNATURE

E.O. Doherty

TITLE

Dir. T.A.

DATE

11/12/90

TYPE OR PRINT NAME

E.O. DOHERTY

915 687-7812
TELEPHONE NO.

(This space for State Use)

APPROVED BY

TITLE

DATE

CONDITIONS OF APPROVAL, IF ANY:

proposals
District Office
State Leases - 4 copies
Fee Leases - 3 copies

State of New Mexico
Energy, Minerals and Natural Resources Department

Form C-162
Revised 1-2-89

OIL CONSERVATION DIVISION
P.O. Box 2088
Santa Fe, New Mexico 87504-2088

DISTRICT I
P.O. Box 1980, Hobbs, NM 88240

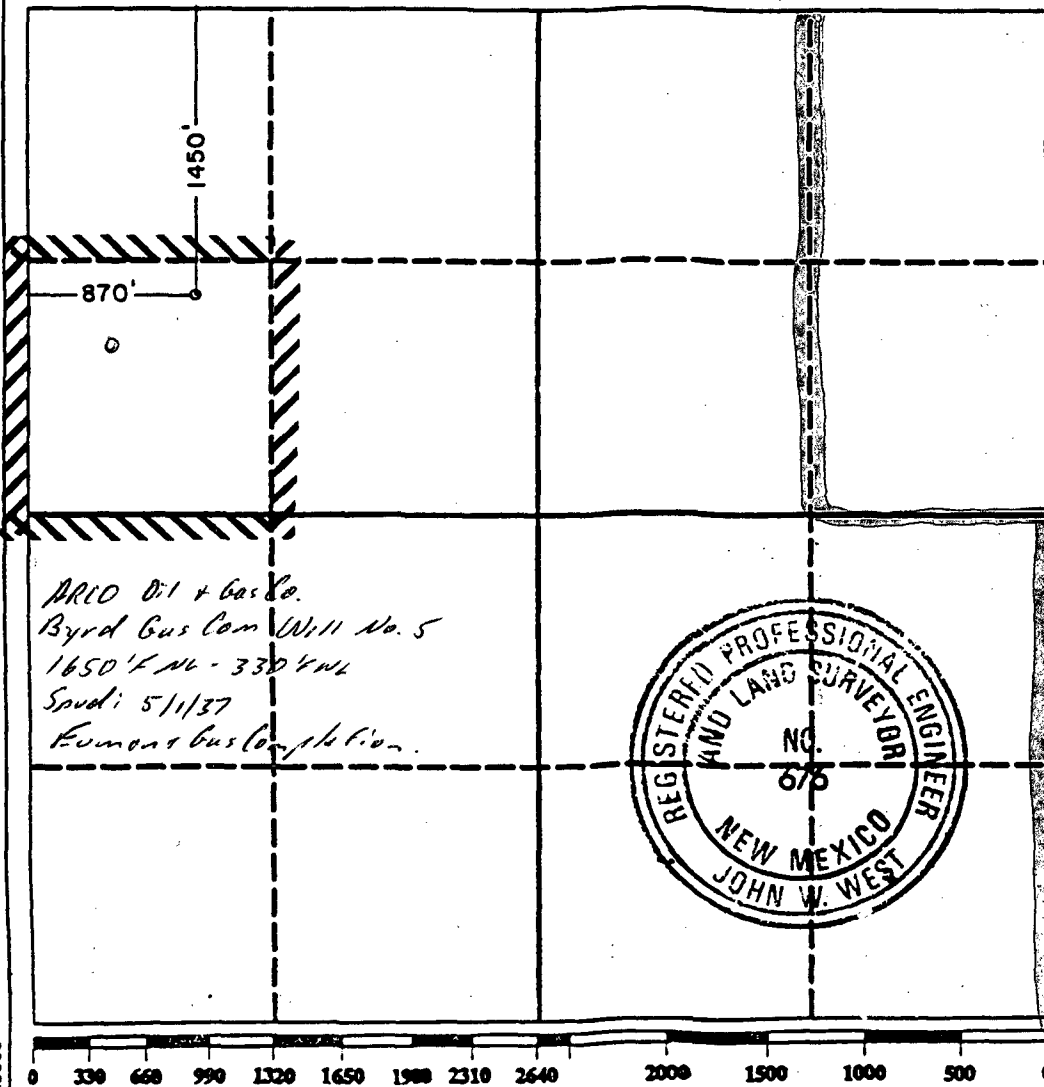
DISTRICT II
P.O. Denver DD, Artesia, NM 88210

DISTRICT III
1000 Rio Brazos Rd., Aztec, NM 87410

WELL LOCATION AND ACREAGE DEDICATION PLAT
All Distances must be from the outer boundaries of the section

Operator CHEVRON U.S.A. INC.			Lease EUNICE-MONUMENT SOUTH UNIT (EXP. -B)		Well No. 855
Unit Letter E	Section 11	Township 20 SOUTH	Range 36 EAST	County LEA	
Actual Footage Location of Well: 1450 feet from the NORTH line and 870 feet from the WEST line					
Ground level Elev. 3585.6	Producing Formation EUNICE MONUMENT		Pool GRAYBURG	Dedicated Acreage: Acres	

- Outline the acreage dedicated to the subject well by colored pencil or hatchure marks on the plat below.
- If more than one lease is dedicated to the well, outline each and identify the ownership thereof (both as to working interest and royalty).
- If more than one lease of different ownership is dedicated to the well, have the interest of all owners been consolidated by communitization, unitization, force-pooling, etc.?
☐ Yes ☐ No If answer is "yes" type of consolidation _____
If answer is "no" list the owners and tract descriptions which have actually been consolidated. (Use reverse side of this form if necessary).
No allowable will be assigned to the well until all interests have been consolidated (by communitization, unitization, forced-pooling, or otherwise) or until a non-standard unit, eliminating such interest, has been approved by the Division.



OPERATOR CERTIFICATION

I hereby certify that the information contained herein is true and complete to the best of my knowledge and belief.

Signature
E. O. Wootery
Printed Name
E. O. Wootery
Position
T.A. Delg.
Company
Chevron USA Inc
Date
11/29/90

SURVEYOR CERTIFICATION

I hereby certify that the well location shown on this plat was plotted from field notes of actual surveys made by me or under my supervision, and that the same is true and correct to the best of my knowledge and belief.

Date Surveyed
11-26-90

Signature & Seal of
Professional Surveyor

Signature
John W. West
Certificate No.
JOHN W. WEST, 676
RONALD J. EIDSON, 3239

OIL CONSERVATION DIVISION

RECEIVED



AM 9 07

ENERGY AND MINERALS DEPARTMENT

OIL CONSERVATION DIVISION

HOBBS DISTRICT OFFICE

12-7-90

GARREY CARRUTHERS
GOVERNOR

POST OFFICE BOX 1980
HOBBS, NEW MEXICO 88241-1980
(505) 393-6161

OIL CONSERVATION DIVISION
P. O. BOX 2088
SANTA FE, NEW MEXICO 87501

RE: Proposed:

MC _____
DHC _____
NSL ☒ _____
NSP _____
SWD _____
WFX _____
PMX _____

Gentlemen:

I have examined the application for the:

Chevron USA Inc. Eunice Movement South Unit B #855-E
Operator Lease & Well No. Unit S-T-R 11-20-36

and my recommendations are as follows:

OK

Yours very truly,

Jerry Sexton
Jerry Sexton
Supervisor, District 1

/ed