



# PYRAMID ENERGY, INC.

Pacific Plaza • 14100 San Pedro, Suite 700

San Antonio, Texas 78232 • (512) 490-5000 • FAX: (512) 494-0206

CONSERVATION DIVISION  
RECEIVED

DEC 14 AM 9 17

December 11, 1990

Michael E. Stogner  
NMOCD  
P.O. Box 2088  
Santa Fe, New Mexico 87504-2088

Re: Unorthodox Location  
East Pearl Queen Unit  
T19S, R35E  
Lea County, New Mexico



Dear Mr. Stogner:

This letter shall serve as our request to have the following unorthodox location approved by your office.

2563' FSL 40 FEL, Sec. 28, Unit I, T19S, R35E

On the attached plat, you will note our location lies within the unit boundaries of the East Pearl Queen Unit. We offset ourselves on these locations. We are requesting approval of this location because it will allow us to establish a more efficient waterflood pattern within the unit.

Should you have any questions, please call.

Sincerely,

*Scott Graef /dh*

Scott Graef  
Production Engineer

attachment

cc: NMOCD - Hobbs

**NEW MEXICO OIL CONSERVATION COMMISSION  
WELL LOCATION AND ACREAGE DEDICATION PLAT**

Form C-102  
Supersedes C-128  
Effective 1-1-65

All distances must be from the outer boundaries of the Section.

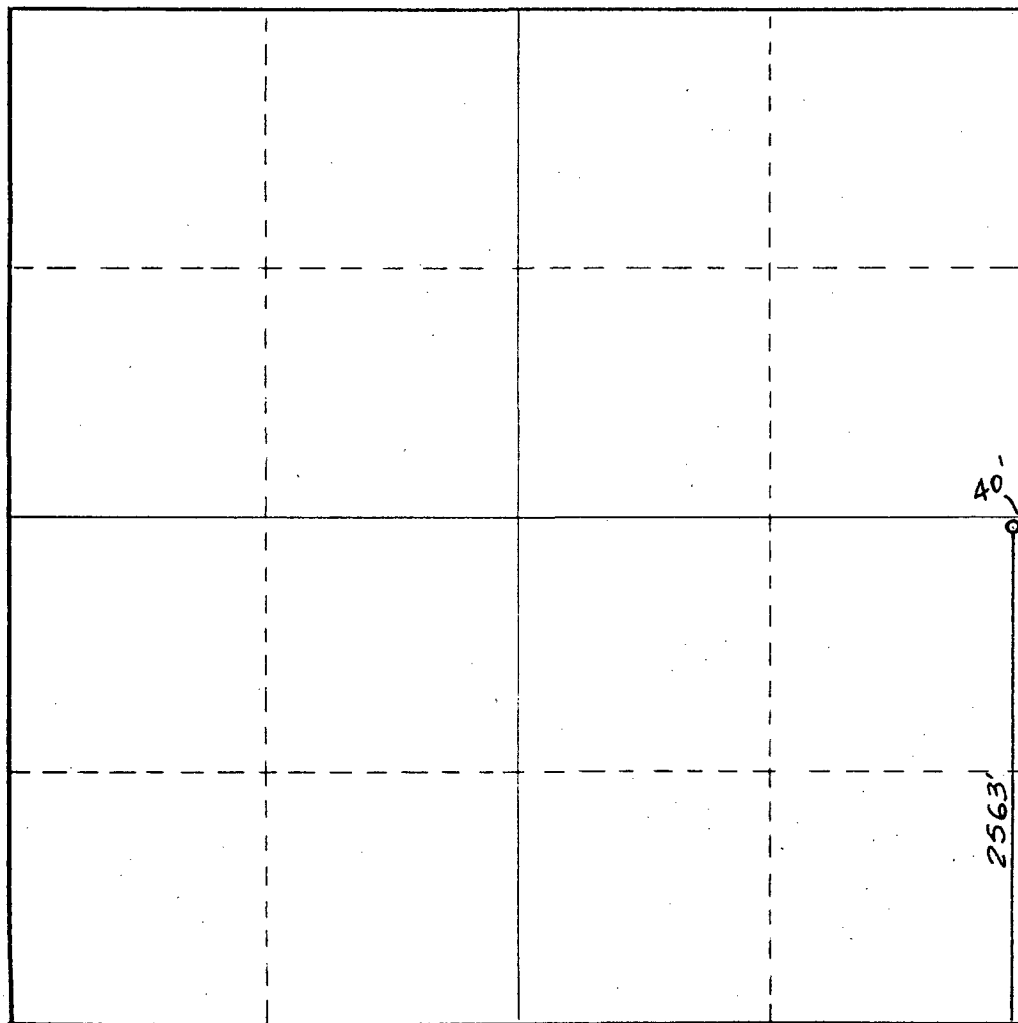
Operator <b>PYRAMID ENERGY INC.</b>			Lease <b>East Pearl Queen Unit</b>		Well No. <b>77</b>
Unit Letter <b>I</b>	Section <b>28</b>	Township <b>19 South</b>	Range <b>35 East</b>	County <b>Lea County, N.M.</b>	
Actual Footage Location of Well: <b>2563</b> feet from the <b>South</b> line and <b>40</b> feet from the <b>East</b> line					
Ground Level Elev. <b>3719.</b>	Producing Formation		Pool	Dedicated Acreage:  Acres	

1. Outline the acreage dedicated to the subject well by colored pencil or hachure marks on the plat below.
2. If more than one lease is dedicated to the well, outline each and identify the ownership thereof (both as to working interest and royalty).
3. If more than one lease of different ownership is dedicated to the well, have the interests of all owners been consolidated by communitization, unitization, force-pooling, etc?

☐ Yes    ☐ No    If answer is "yes," type of consolidation \_\_\_\_\_

If answer is "no," list the owners and tract descriptions which have actually been consolidated. (Use reverse side of this form if necessary.) \_\_\_\_\_

No allowable will be assigned to the well until all interests have been consolidated (by communitization, unitization, forced-pooling, or otherwise) or until a non-standard unit, eliminating such interests, has been approved by the Commission.



**CERTIFICATION**

*I hereby certify that the information contained herein is true and complete to the best of my knowledge and belief.*

Name \_\_\_\_\_

Position \_\_\_\_\_

Company \_\_\_\_\_

Date \_\_\_\_\_

*I hereby certify that the well location shown on this plat was plotted from field notes of actual surveys made by me or under my supervision, and that the same is true and correct to the best of my knowledge and belief.*

Date Surveyed

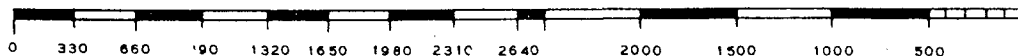
**December 7, 1990**

Registered Professional Engineer  
and/or Land Surveyor

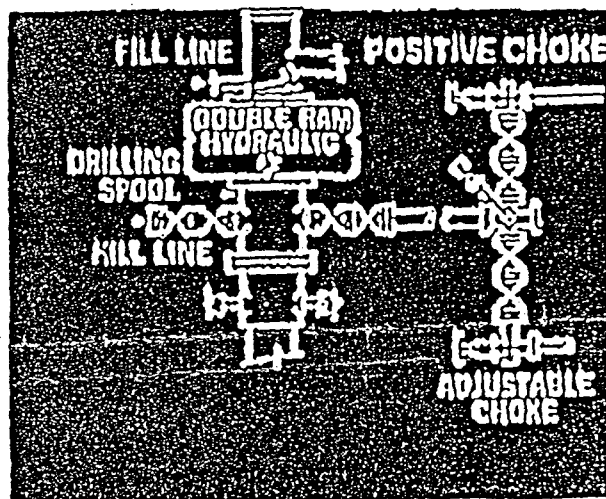
*Jan R. Reddy*

Certificate No.

**NM PE&PS NO. 5412**



BOP

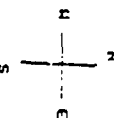


**Singo Operating Inc.**  
 East & West Pearl Queen Units

Development Locations

Scale: 1000 ft  
 Leo County  
 New Mexico

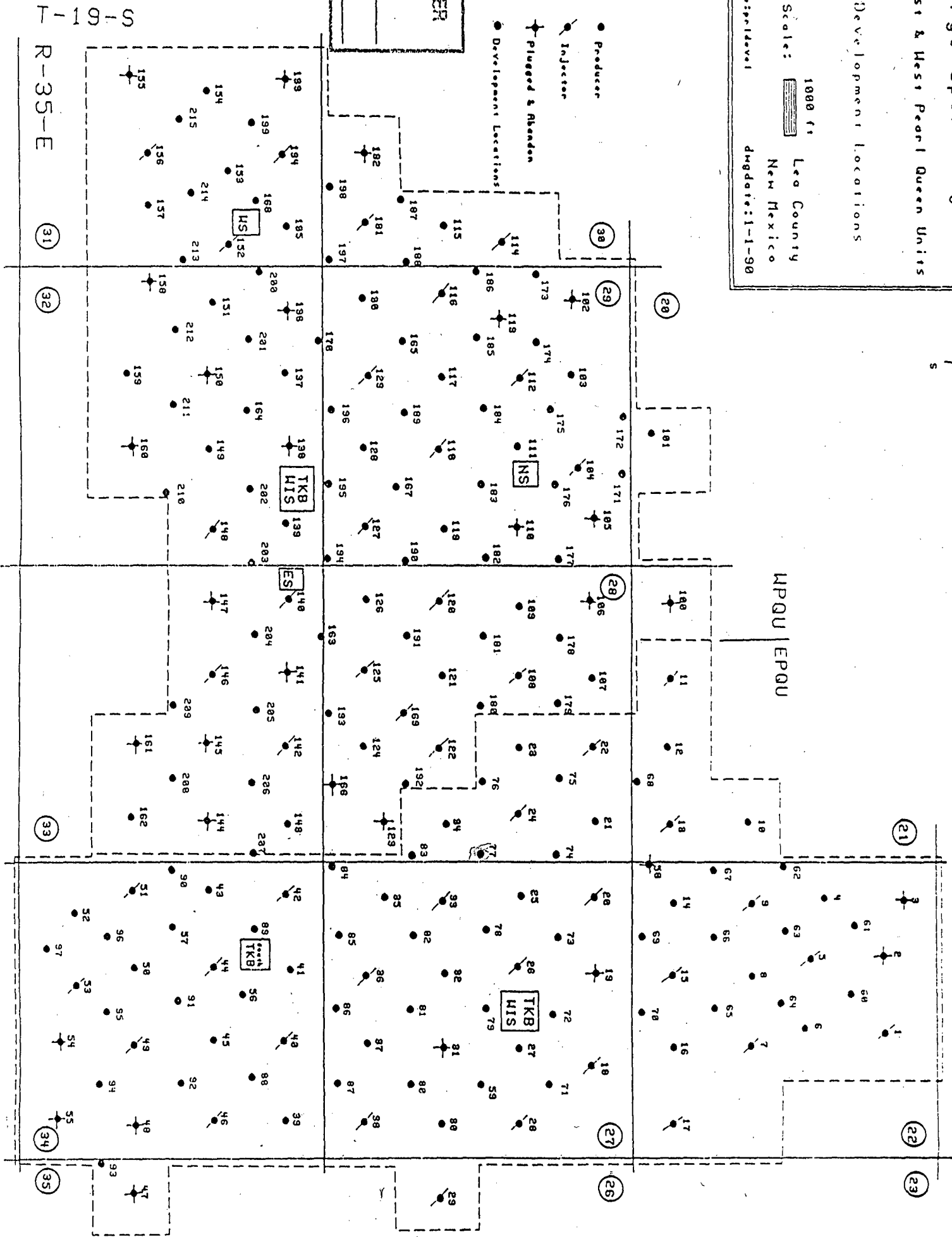
Map Date: 1-1-90



BEFORE EXAMINER STOGNER  
 OIL CONSERVATION DIVISION

EXHIBIT NO. 1

SE NO. 9920 - 9921



S-19-1  
 R-35-E

Submit to Appropriate  
District Office  
State Lease - 6 copies  
Fee Lease - 5 copies

State of New Mexico  
Energy, Minerals and Natural Resources Department

Form C-101  
Revised 1-1-89

OIL CONSERVATION DIVISION

DISTRICT I  
P.O. Box 1980, Hobbs, NM 88240

DISTRICT II  
P.O. Drawer DD, Artesia, NM 88210

DISTRICT III  
1000 Rio Brazos Rd., Aztec, NM 87410

P.O. Box 2088  
Santa Fe, New Mexico 87504-2088

API NO. (assigned by OCD on New Wells)

5. Indicate Type of Lease

STATE ☐

FEE ☒

6. State Oil & Gas Lease No.

APPLICATION FOR PERMIT TO DRILL, DEEPEN, OR PLUG BACK

1a. Type of Work:

DRILL ☒

RE-ENTER ☐

DEEPEN ☐

PLUG BACK ☐

b. Type of Well:

OIL  
WELL ☒

GAS  
WELL ☐

OTHER ☐

SINGLE  
ZONE ☐

MULTIPLE  
ZONE ☐

7. Lease Name or Unit Agreement Name

East Pearl Queen Unit

2. Name of Operator

Pyramid Energy, Inc.

8. Well No.

#77

3. Address of Operator

14100 San Pedro Ste. 700 San Antonio, Texas 78232

9. Pool name or Wildcat

Pearl Queen

4. Well Location

Unit Letter

I

: 2563

Feet From The

South

Line and

40

Feet From The

East

Line

Section 28

Township

19S

Range

35E

NMPM

Lea

County

10. Proposed Depth

5200'

11. Formation

Queen

12. Rotary or C.T.

Rotary

13. Elevations (Show whether DF, RT, GR, etc.)

3719'

14. Kind & Status Plug. Bond

Surety Bond-Current

15. Drilling Contractor

Peterson

16. Approx. Date Work will start

12/20/90

17. PROPOSED CASING AND CEMENT PROGRAM

SIZE OF HOLE	SIZE OF CASING	WEIGHT PER FOOT	SETTING DEPTH	SACKS OF CEMENT	EST. TOP
12 1/4"	8 5/8"	24#	400'	250 sx	Surface
7 7/8"	5 1/2"	15.50# & 17#	5000'	1000 sx	Surface

IN ABOVE SPACE DESCRIBE PROPOSED PROGRAM: IF PROPOSAL IS TO DEEPEN OR PLUG BACK, GIVE DATA ON PRESENT PRODUCTIVE ZONE AND PROPOSED NEW PRODUCTIVE ZONE. GIVE BLOWOUT PREVENTER PROGRAM, IF ANY.

I hereby certify that the information above is true and complete to the best of my knowledge and belief.

SIGNATURE

*Debra Hofstetter*

TITLE

Production

DATE

12/11/90

TYPE OR PRINT NAME

Debra Hofstetter

TELEPHONE NO. (512) 490-5000

(This space for State Use)

APPROVED BY

TITLE

DATE

CONDITIONS OF APPROVAL, IF ANY:



OIL CONSERVATION DIVISION  
STATE OF NEW MEXICO  
ENERGY AND MINERALS DEPARTMENT  
OIL CONSERVATION DIVISION  
HOBBS DISTRICT OFFICE

GARREY CARRUTHERS  
GOVERNOR

12-14-90

POST OFFICE BOX 1980  
HOBBS, NEW MEXICO 88241-1980  
(505) 393-6161

OIL CONSERVATION DIVISION  
P. O. BOX 2088  
SANTA FE, NEW MEXICO 87501

RE: Proposed:

MC \_\_\_\_\_  
DHC \_\_\_\_\_  
NSL ☒ \_\_\_\_\_  
NSP \_\_\_\_\_  
SWD \_\_\_\_\_  
WFX \_\_\_\_\_  
PMX \_\_\_\_\_

Gentlemen:

I have examined the application for the:

*Pyramid Energy Inc.* *East Lead Queen Unit # 77-I 28-19-35*  
Operator Lease & Well No. Unit S-T-R

and my recommendations are as follows:

*OK*

Yours very truly,

*Jerry Sexton*  
Jerry Sexton  
Supervisor, District 1

/ed

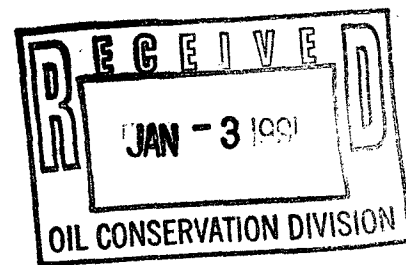


# PYRAMID ENERGY, INC.

Pacific Plaza • 14100 San Pedro, Suite 700

San Antonio, Texas 78232 • (512) 490-5000 • FAX: (512) 494-0406

January 2, 1991



Michael E. Stogner  
NMOCD  
P.O. Box 2088  
Santa Fe, New Mexico 87504-2088

Re: Unorthodox Location  
East Pearl Queen Unit #32  
T19S, R35E  
Lea County, New Mexico

Dear Mr. Stogner:

This letter shall serve as our request to have the following unorthodox location approved by your office.

1500' FSL 1410' FWL, Sec. 27, Unit K, T19S, R35E

On the attached plat, you will note our location lies within the unit boundaries of the East Pearl Queen Unit. We offset ourselves on this location. We are requesting approval of this location because it will allow us to establish a more efficient waterflood pattern within the unit.

Should you have any questions, please call.

Sincerely,

Scott Graef  
Production Engineer

attachments

cc: NMOCD - Hobbs

Submit to Appropriate  
District Office  
State Lease -- 6 copies  
Fee Lease -- 5 copies

State of New Mexico  
Energy, Minerals and Natural Resources Department

Form C-101  
Revised 1-1-89

OIL CONSERVATION DIVISION

DISTRICT I  
P.O. Box 1980, Hobbs, NM 88240

P.O. Box 2088

Santa Fe, New Mexico 87504-2088

DISTRICT II  
P.O. Drawer DD, Artesia, NM 88210

DISTRICT III  
1000 Rio Brazos Rd., Aztec, NM 87410

API NO. (assigned by OCD on New Wells)

5. Indicate Type of Lease

STATE ☒

FEE ☐

6. State Oil & Gas Lease No.

E-5838

APPLICATION FOR PERMIT TO DRILL, DEEPEN, OR PLUG BACK

1a. Type of Work:

DRILL ☒

RE-ENTER ☐

DEEPEN ☐

PLUG BACK ☐

b. Type of Well:

OIL  
WELL ☒

GAS  
WELL ☐

OTHER ☐

SINGLE  
ZONE ☐

MULTIPLE  
ZONE ☐

7. Lease Name or Unit Agreement Name

East Pearl Queen Unit

2. Name of Operator

Pyramid Energy, Inc.

8. Well No.

#82

3. Address of Operator

14100 San Pedro, Ste. 700 San Antonio, Texas 78232

9. Pool name or Wildcat

Pearl Queen

4. Well Location

Unit Letter K : 1500 Feet From The South Line and 1410 Feet From The West Line

Section 27

Township 19S

Range 35E

NMPM

Lea

County

10. Proposed Depth

5200'

11. Formation

Queen

12. Rotary or C.T.

Rotary

13. Elevations (Show whether DF, RT, GR, etc.)

14. Kind & Status Plug. Bond

Surety Bond-Current

15. Drilling Contractor

Peterson

16. Approx. Date Work will start

01-11-91

17.

PROPOSED CASING AND CEMENT PROGRAM

SIZE OF HOLE	SIZE OF CASING	WEIGHT PER FOOT	SETTING DEPTH	SACKS OF CEMENT	EST. TOP
12 1/4"	8 5/8"	24#	400'	250 sx.	surface
7 7/8"	5 1/2"	15.50# & 17#	5000'	1000 sx.	surface

IN ABOVE SPACE DESCRIBE PROPOSED PROGRAM: IF PROPOSAL IS TO DEEPEN OR PLUG BACK, GIVE DATA ON PRESENT PRODUCTIVE ZONE AND PROPOSED NEW PRODUCTIVE ZONE. GIVE BLOWOUT PREVENTER PROGRAM, IF ANY.

I hereby certify that the information above is true and complete to the best of my knowledge and belief.

SIGNATURE

*Scott Graef*

TITLE

Production Engineer

DATE 01-02-91

TYPE OR PRINT NAME

Scott Graef

TELEPHONE NO. (512) 490-5000

(This space for State Use)

APPROVED BY

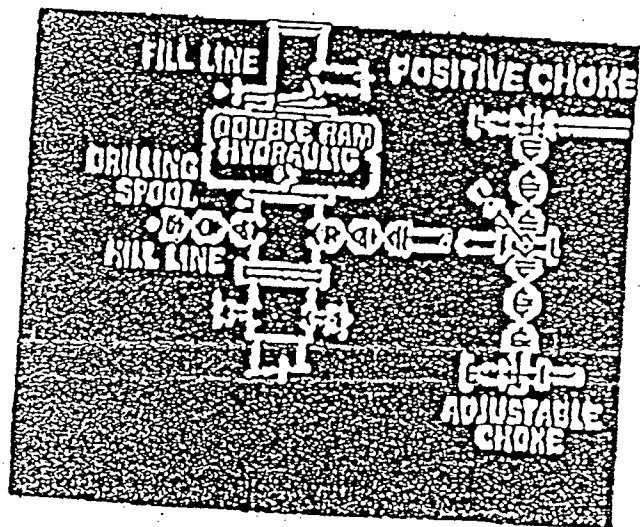
TITLE

DATE

CONDITIONS OF APPROVAL, IF ANY:



BOP



**NEW MEXICO OIL CONSERVATION COMMISSION  
WELL LOCATION AND ACREAGE DEDICATION PLAT**

Form C-102  
Supersedes C-128  
Effective 1-1-65

All distances must be from the outer boundaries of the Section.

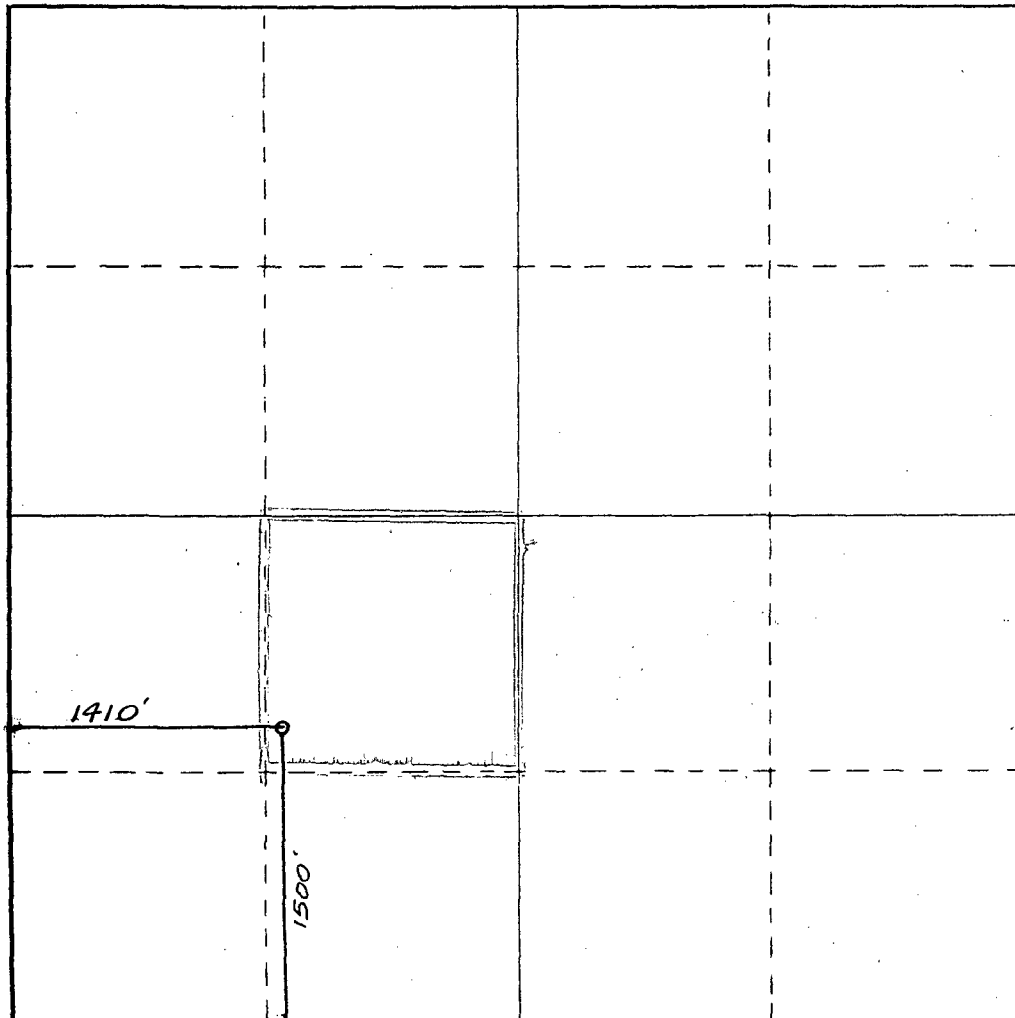
Operator <b>PYRAMID ENERGY INC.</b>			Lease <b>East Pearl Queen Unit</b>		Well No. <b>82</b>
Unit Letter <b>K</b>	Section <b>27</b>	Township <b>19 South</b>	Range <b>35 East</b>	County <b>Lea County, N.M.</b>	
Actual Footage Location of Well: <b>1500</b> feet from the <b>South</b> line and <b>1410</b> feet from the <b>West</b> line					
Ground Level Elev. <b>3721.</b>	Producing Formation <b>Queen</b>		Pool <b>Pearl Queen</b>		Dedicated Acreage: <b>40</b> Acres

1. Outline the acreage dedicated to the subject well by colored pencil or hachure marks on the plat below.
2. If more than one lease is dedicated to the well, outline each and identify the ownership thereof (both as to working interest and royalty).
3. If more than one lease of different ownership is dedicated to the well, have the interests of all owners been consolidated by communitization, unitization, force-pooling, etc?

☒ Yes    ☐ No    If answer is "yes," type of consolidation Unitization

If answer is "no," list the owners and tract descriptions which have actually been consolidated. (Use reverse side of this form if necessary.) \_\_\_\_\_

No allowable will be assigned to the well until all interests have been consolidated (by communitization, unitization, forced-pooling, or otherwise) or until a non-standard unit, eliminating such interests, has been approved by the Commission.



**CERTIFICATION**

I hereby certify that the information contained herein is true and complete to the best of my knowledge and belief.

**Scott Graef**

Name

*Scott Graef*

Position

**Production Engineer**

Company

**Pyramid Energy, Inc.**

Date

**01/02/91**

I hereby certify that the well location shown on this plat was plotted from field notes of actual surveys made by me or under my supervision, and that the same is true and correct to the best of my knowledge and belief.

Date Surveyed

**December 29, 1990**

Registered Professional Engineer  
and/or Land Surveyor

*Dan R. Reddy*

Certificate No.

**NM PE&PS NO. 5412**



Submit to Appropriate  
District Office  
State Lease - 6 copies  
Fee Lease - 5 copies

State of New Mexico  
Energy, Minerals and Natural Resources Department

Form C-101  
Revised 1-1-89

OIL CONSERVATION DIVISION

P.O. Box 2088  
Santa Fe, New Mexico 87504-2088

DISTRICT I  
P.O. Box 1980, Hobbs, NM 88240

DISTRICT II  
P.O. Drawer DD, Artesia, NM 88210

DISTRICT III  
1000 Rio Brazos Rd., Aztec, NM 87410

API NO. (assigned by OCD on New Wells)

5. Indicate Type of Lease

STATE ☒

FEE ☐

6. State Oil & Gas Lease No.  
E-5838

APPLICATION FOR PERMIT TO DRILL, DEEPEN, OR PLUG BACK

1a. Type of Work:

DRILL ☒

RE-ENTER ☐

DEEPEN ☐

PLUG BACK ☐

b. Type of Well:

OIL  
WELL ☒

GAS  
WELL ☐

OTHER ☐

SINGLE  
ZONE ☐

MULTIPLE  
ZONE ☐

2. Name of Operator

Pyramid Energy, Inc.

3. Address of Operator

14100 San Pedro, Ste. 700 San Antonio, Texas 78232

7. Lease Name or Unit Agreement Name

East Pearl Queen Unit

8. Well No.

#85

9. Pool name or Wildcat

Pearl Queen

4. Well Location

Unit Letter N : 140 Feet From The South Line and 1330 Feet From The West Line

Section 27

Township

19S

Range 35E

NMPM

Lea

County

10. Proposed Depth

5200'

11. Formation

Queen

12. Rotary or C.T.

Rotary

13. Elevations (Show whether DF, RT, GR, etc.)

3707'

14. Kind & Status Plug. Bond

Surety Bond-Current

15. Drilling Contractor

Peterson

16. Approx. Date Work will start

02/07/91

17. PROPOSED CASING AND CEMENT PROGRAM

SIZE OF HOLE	SIZE OF CASING	WEIGHT PER FOOT	SETTING DEPTH	SACKS OF CEMENT	EST. TOP
12 1/4"	8 5/8"	24#	400'	250 sx.	Surface
7 7/8"	5 1/2"	15.50# & 17#	5000'	1000 sx.	Surface

IN ABOVE SPACE DESCRIBE PROPOSED PROGRAM: IF PROPOSAL IS TO DEEPEN OR PLUG BACK, GIVE DATA ON PRESENT PRODUCTIVE ZONE AND PROPOSED NEW PRODUCTIVE ZONE. GIVE BLOWOUT PREVENTER PROGRAM, IF ANY.

I hereby certify that the information above is true and complete to the best of my knowledge and belief.

SIGNATURE

*Scott Graef*

TITLE

Production Engineer

DATE 01-02-91

TYPE OR PRINT NAME

Scott Graef

TELEPHONE NO. (512) 490-500

(This space for State Use)

APPROVED BY

TITLE

DATE

CONDITIONS OF APPROVAL, IF ANY:

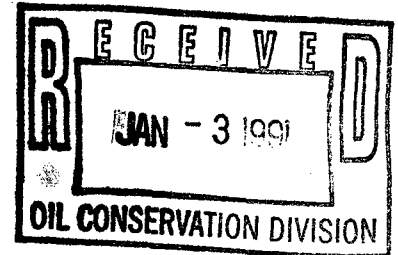


# PYRAMID ENERGY, INC.

Pacific Plaza • 14100 San Pedro, Suite 700

San Antonio, Texas 78232 • (512) 490-5000 • FAX: (512) 494-0406

January 2, 1991



Michael E. Stogner  
NMOCD  
P.O. Box 2088  
Santa Fe, New Mexico 87504-2088

Re: Unorthodox Location  
East Pearl Queen Unit #85  
T19S, R35E  
Lea County, New Mexico

Dear Mr. Stogner:

This letter shall serve as our request to have the following unorthodox location approved by your office.

140' FSL 1330' FWL, Sec. 27, Unit N, T19S, R35E

On the attached plat, you will note our location lies within the unit boundaries of the East Pearl Queen Unit. We offset ourselves on this location. We are requesting approval of this location because it will allow us to establish a more efficient waterflood pattern within the unit.

Should you have any question, please call.

Sincerely,

Scott Graef  
Production Engineer

attachments

cc: NMOCD - Hobbs

**NEW MEXICO OIL CONSERVATION COMMISSION  
WELL LOCATION AND ACREAGE DEDICATION PLAT**

Form C-102  
Supersedes C-128  
Effective 1-1-65

All distances must be from the outer boundaries of the Section.

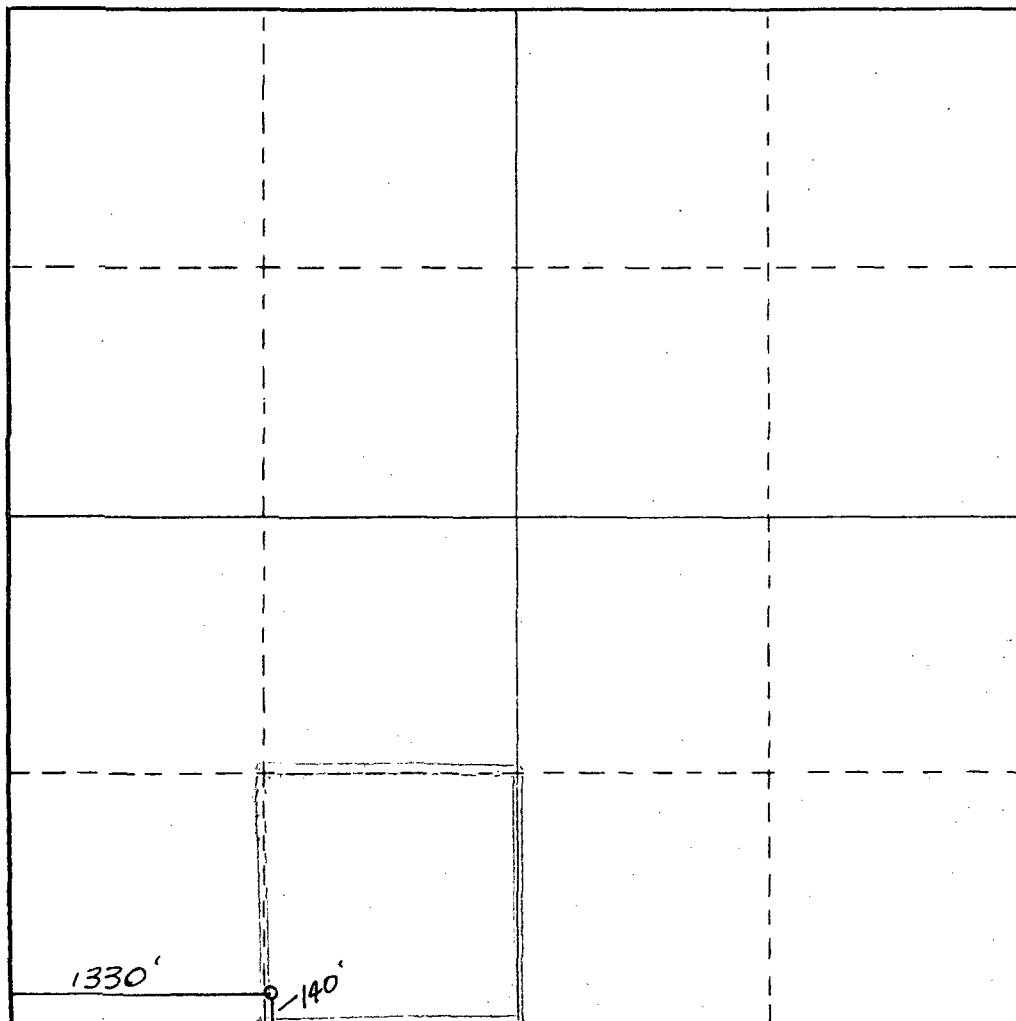
Operator <b>PYRAMID ENERGY INC.</b>			Lease <b>East Pearl Queen Unit</b>		Well No. <b>85</b>
Unit Letter <b>N</b>	Section <b>27</b>	Township <b>19 South</b>	Range <b>35 East</b>	County <b>Lea County, N.M.</b>	
Actual Footage Location of Well: <b>140</b> feet from the <b>South</b> line and <b>1330</b> feet from the <b>West</b> line.					
Ground Level Elev. <b>3707.</b>	Producing Formation <b>Queen</b>		Pool <b>Pearl Queen</b>		Dedicated Acreage: <b>40</b> Acres

1. Outline the acreage dedicated to the subject well by colored pencil or hachure marks on the plat below.
2. If more than one lease is dedicated to the well, outline each and identify the ownership thereof (both as to working interest and royalty).
3. If more than one lease of different ownership is dedicated to the well, have the interests of all owners been consolidated by communitization, unitization, force-pooling, etc?

☒ Yes    ☐ No    If answer is "yes," type of consolidation Unitization

If answer is "no," list the owners and tract descriptions which have actually been consolidated. (Use reverse side of this form if necessary.) \_\_\_\_\_

No allowable will be assigned to the well until all interests have been consolidated (by communitization, unitization, forced-pooling, or otherwise) or until a non-standard unit, eliminating such interests, has been approved by the Commission.



**CERTIFICATION**

I hereby certify that the information contained herein is true and complete to the best of my knowledge and belief.

**Scott Graef**

Name Scott Graef

Position **Production Engineer**

Company **Pyramid Energy, Inc.**

Date **01-02-91**

I hereby certify that the well location shown on this plat was plotted from field notes of actual surveys made by me or under my supervision, and that the same is true and correct to the best of my knowledge and belief.



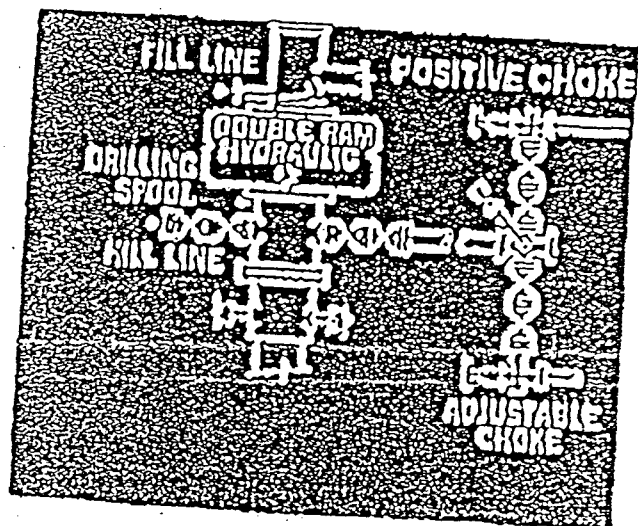
Date Surveyed **December 29, 1990**

Registered Professional Engineer and/or Land Surveyor

Dan R. Reddy

Certificate No. **№1 PE&PS NO. 5412**

BOP

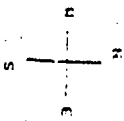


**Singo Operating Inc.**  
 East & West Pearl Queen Units

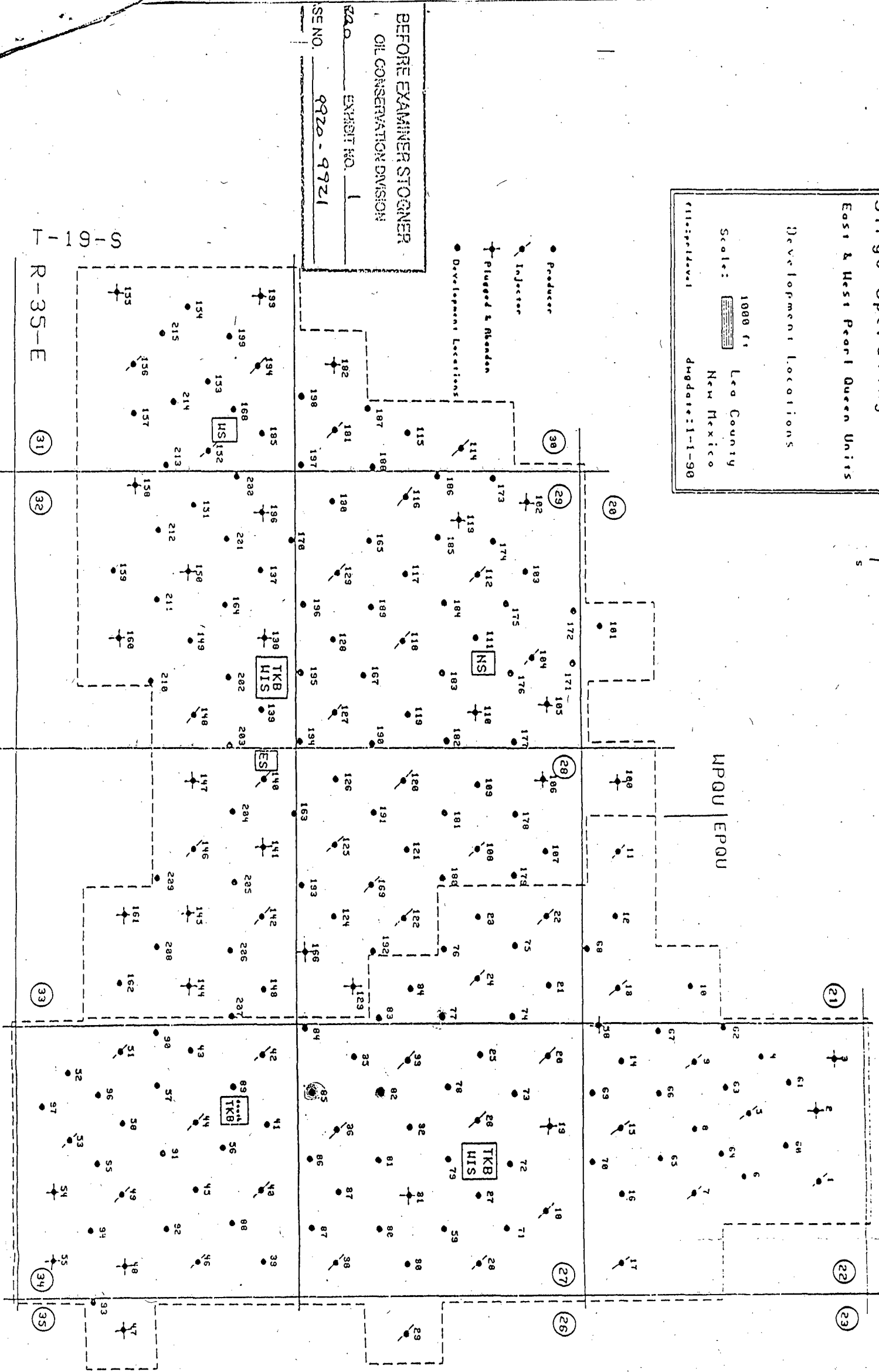
Development Locations

Scale: 1000 ft  
 Lea County  
 New Mexico

File: 9920-9921  
 Date: 1-1-90



BEFORE EXAMINER SIGNATURE  
 OIL CONSERVATION DIVISION  
 EXHIBIT NO. 1  
 CASE NO. 9920-9921



S-10-1  
 R-35-E

WPOU EPQU