

FAX 505-326-5900

OIL CONSERVATION DIVISION
RECEIVED

PH. 505-327-9801

MERRION OIL & GAS CORPORATION

610 REILLY AVE. • P.O. Box 840

FARMINGTON, NEW MEXICO 87499

1991 MAR 15 AM 8 40

March 14, 1991

Mr. William J. LeMay, Director
New Mexico Oil Conservation Division
P. O. Box 2088
Santa Fe, New Mexico 87504

Re: Federal 28 No. 2, Unorthodox Location
1800' FSL & 1450' FEL
Sec 28, T20N, R5W
McKinley County, New Mexico

Dear Mr. LeMay:

Merrion Oil and Gas requests an exception to the well location requirements of Rule 104 B for the Federal 28 No. 2 well due to topographical conditions. The well is located in the optimum spot to avoid an existing roadway running through the 40 acre drilling tract. In addition, to stay away from an archeological site we are further constrained to the proposed footages.

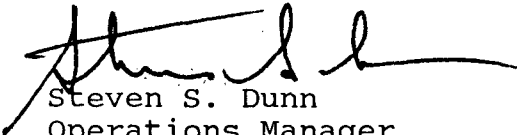
All offsetting spacing units are part of the same lease, NM-7509, and Merrion is the operator. Therefore, proper notification has been made.

Attached are a topographical plat and acreage dedication form identifying the proposed spacing unit, existing and proposed wells in the area, and the topographic conditions thereon.

If further is required, please advise.

Sincerely,

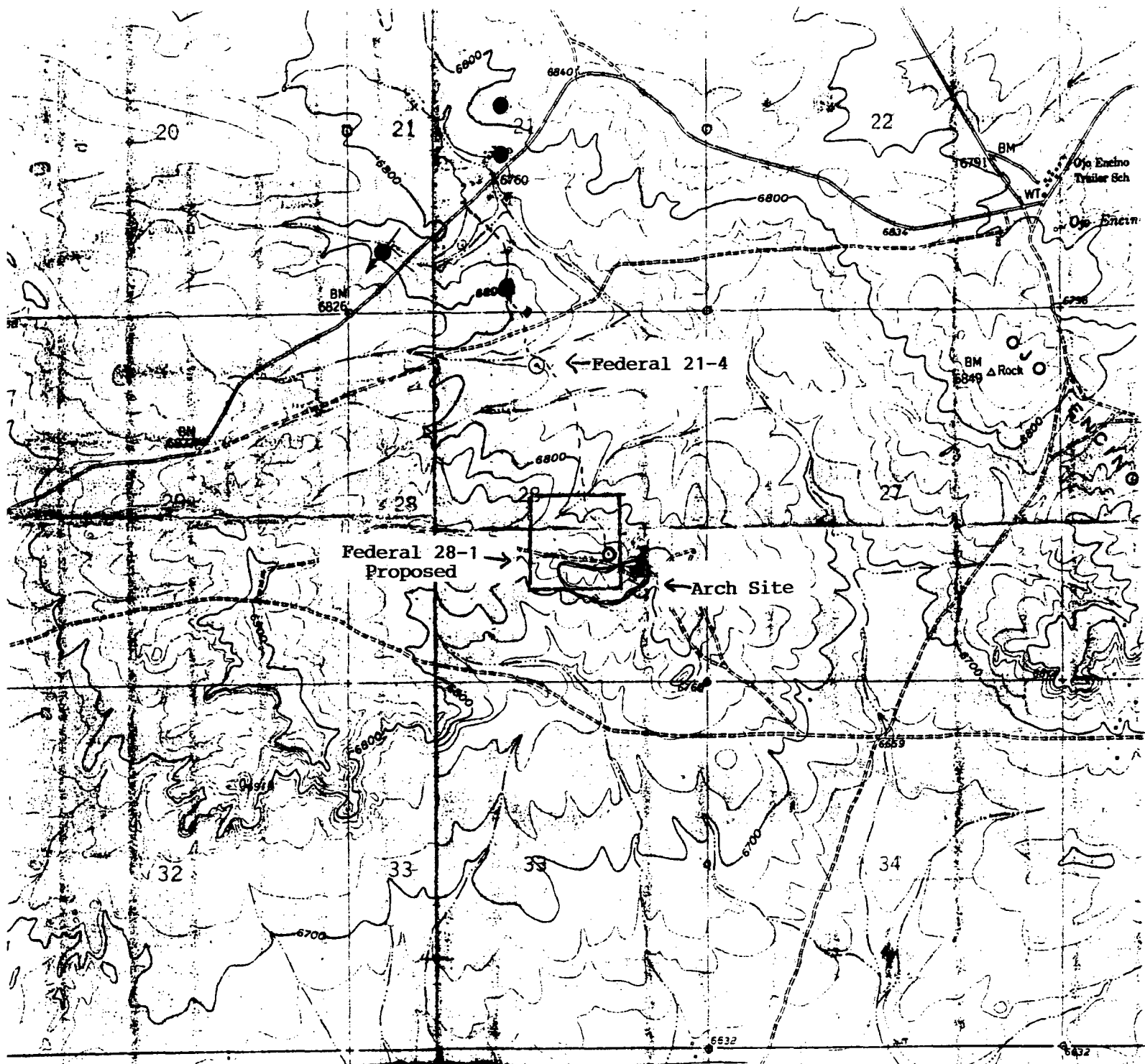
MERRION OIL & GAS CORPORATION


Steven S. Dunn
Operations Manager

SSD/lls

cc: Doug Endsley
Well File

3/15/91
Shake w/ Steve Dunn



MERRION OIL & GAS CORP.
FEDERAL 28 #2
1800'FSL & 1450'FEL
Sec.28, T20N, R5W
McKinley Co., N.M.

Submit to Appropriate
District Office
State Lease - 4 copies
Fee Lease - 3 copies

State of New Mexico
Energy, Minerals and Natural Resources Department

Form C-102
Revised 1-1-89

OIL CONSERVATION DIVISION

P.O. Box 2088
Santa Fe, New Mexico 87504-2088

DISTRICT I

P.O. Box 1980, Hobbs, NM 88240

DISTRICT II

P.O. Drawer DD, Artesia, NM 88210

DISTRICT III

1000 Rio Brazos Rd., Aztec, NM 87410

WELL LOCATION AND ACREAGE DEDICATION PLAT

All Distances must be from the outer boundaries of the section

Operator MERRION OIL & GAS CORPORATION			Lease FEDERAL 28		Well No. 2
Unit Letter J	Section 28	Township 20 N	Range 5 W	County McKinley	
Actual Footage Location of Well: 1800 feet from the South line and 1450 feet from the East line					
Ground level Elev. 6825	Producing Formation Entrada		Pool Ojo Encino	Dedicated Acreage: 40 Acres	

1. Outline the acreage dedicated to the subject well by colored pencil or hachure marks on the plat below.
2. If more than one lease is dedicated to the well, outline each and identify the ownership thereof (both as to working interest and royalty).
3. If more than one lease of different ownership is dedicated to the well, have the interest of all owners been consolidated by communization, unitization, force-pooling, etc.?
☐ Yes ☐ No If answer is "yes" type of consolidation _____
If answer is "no" list the owners and tract descriptions which have actually been consolidated. (Use reverse side of this form if necessary.)
No allowable will be assigned to the well until all interests have been consolidated (by communization, unitization, forced-pooling, or otherwise) or until a non-standard unit, eliminating such interest, has been approved by the Division.

0 330 660 990 1320 1650 1980 2310 2640 2000 1500 1000 500 0

$S 89^{\circ}55' W$

80.09 ch.

NM - 7509
(All of Sec 28)
Merrion Oil & Gas
Operator

28

Dedicated
Acreage

1450'

79.90 ch.

OPERATOR CERTIFICATION

I hereby certify that the information contained herein is true and complete to the best of my knowledge and belief.

Signature

Printed Name

Steven S. Dunn

Position

Operations Manager

Company

Merrion Oil & Gas

Date

3/14/91

SURVEYOR CERTIFICATION

I hereby certify that the well location shown on this plat was plotted from field notes of actual surveys made by me or under my supervision, and that the same is true and correct to the best of my knowledge and belief.

3-13-91

Date Surveyed

William E. Mahnke II

Signature & Seal of
Professional Surveyor

Certificate No.

8466

PROFESSIONAL LAND SURVEYOR