



Texaco USA
Producing Department
Midland Division

PO Box 3109
Midland TX 79702-3109

OIL CONSERVATION DIVISION
RECEIVED

'92 SEP 14 AM 8 52

September 9, 1992

GOV - STATE AND LOCAL GOVERNMENTS

Unorthodox Locations

W. H. Rhodes Federal "B" NCT-1
Well Nos. 20 and 21
Rhodes Yates Seven Rivers Field
Lea County, New Mexico

State of New Mexico
Energy and Minerals Department
Oil Conservation Division
P. O. Box 2088
Santa Fe, New Mexico 87501-2088

Attention: Mr. Michael E. Stogner

Gentlemen:

An exception, by administrative approval, to Rule 104 F.I. is requested for Texaco Exploration and Production Inc.'s W. H. Rhodes Federal "B" NCT-1 Well Nos. 20 & 21. These wells are on Federal minerals.

The wells must be drilled in these locations to ensure proper development on 20-acre spacing to recover additional reserves in an established waterflood. These reserves could not be recovered with the current 80-acre, 5-spot pattern.

It should be noted that there are no "affected" offset operators to these wells.

Attached are Forms C-102, showing the location for each well and a lease plat showing the existing wells.

Yours very truly,

C.P. Basham /cwh

C. P. Basham
Drilling Operations Manager

CWH:cwh

cc: BLM, P. O. Box 1778, Carlsbad, NM 88220

OIL CONSERVATION DIVISION

P.O. Box 2088
Santa Fe, New Mexico 87504-2088

DISTRICT I
P.O. Box 1980, Hobbs, NM 88240

DISTRICT II
P.O. Drawer DD, Artesia, NM 88210

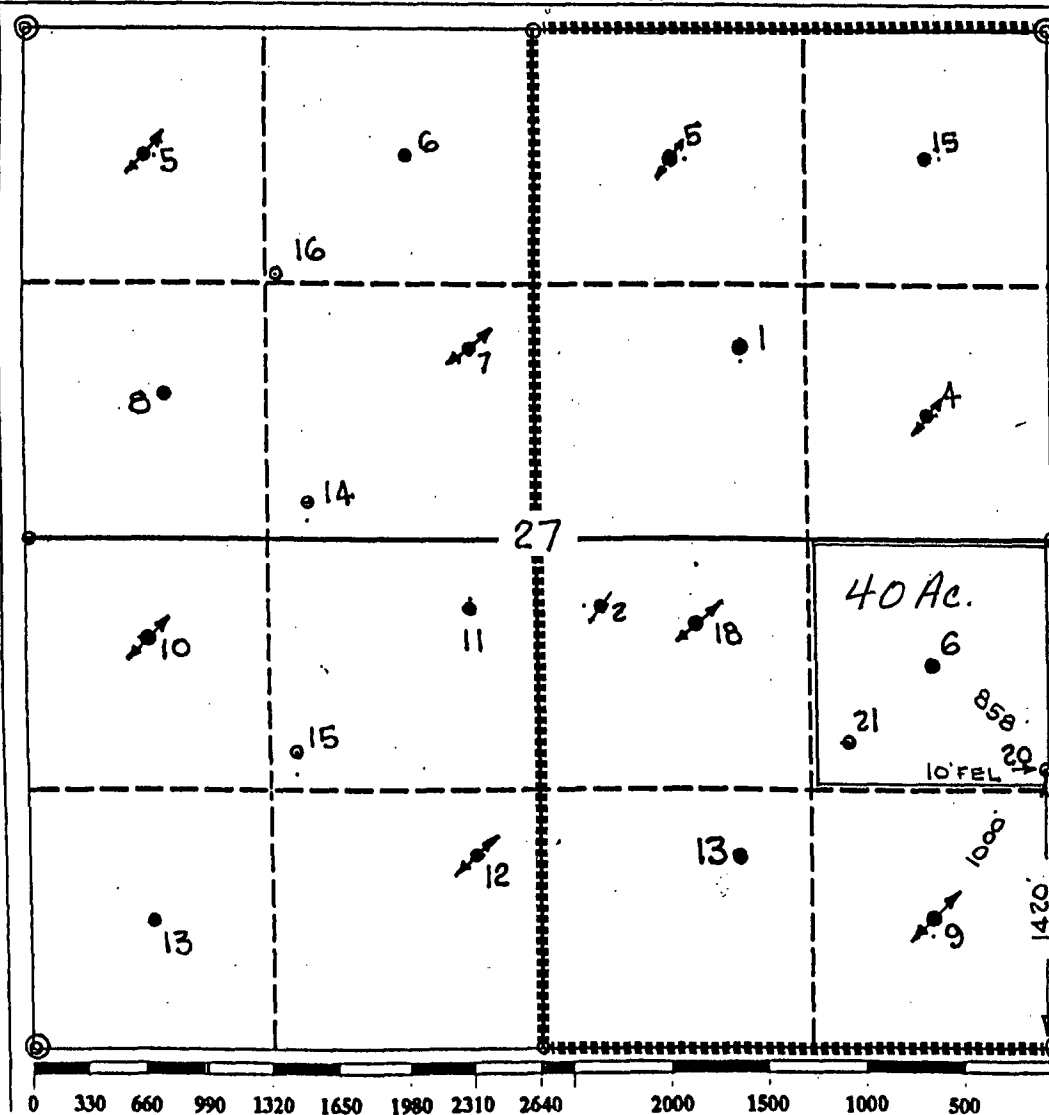
DISTRICT III
1000 Rio Brazos Rd., Aztec, NM 87410

WELL LOCATION AND ACREAGE DEDICATION PLAT

All Distances must be from the outer boundaries of the section

Operator TEXACO EXPLORATION AND PRODUCTION Inc.			Lease W.H. Rhodes Federal "B" NCT-1		Well No. 20
Unit Letter I	Section 27	Township 26-South	Range 37-East	County Lea	
Actual Footage Location of Well: 1420 feet from the South line and 10 feet from the East line					
Ground level Elev. 2980	Producing Formation Yates/7 RVRS		Pool Rhodes Yates Seven Rivers		Dedicated Acreage: 40 Acres

1. Outline the acreage dedicated to the subject well by colored pencil or hatchure marks on the plat below.
2. If more than one lease is dedicated to the well, outline each and identify the ownership thereof (both as to working interest and royalty).
3. If more than one lease of different ownership is dedicated to the well, have the interest of all owners been consolidated by communitization, unitization, force-pooling, etc.?
☐ Yes ☐ No If answer is "yes" type of consolidation _____
If answer is "no" list the owners and tract descriptions which have actually been consolidated. (Use reverse side of this form if necessary).
No allowable will be assigned to the well until all interests have been consolidated (by communitization, unitization, forced-pooling, or otherwise) or until a non-standard unit, eliminating such interest, has been approved by the Division.



OPERATOR CERTIFICATION

I hereby certify that the information contained herein is true and complete to the best of my knowledge and belief.

Signature

Royce D. Mariott

Printed Name

Royce D. Mariott

Position

Division Surveyor

Company

Texaco Expl. & Prod. Inc.

Date

September 9, 1992

SURVEYOR CERTIFICATION

I hereby certify that the well location shown on this plat was plotted from field notes of actual surveys made by me or under my supervision, and that the same is true and correct to the best of my knowledge and belief.

Date Surveyed

September 3, 1992

Signature & Seal of
Professional Surveyor

John S. Piper

Certificate No.

7254

John S. Piper

Sheet

of

OIL CONSERVATION DIVISION

P.O. Box 2088

Santa Fe, New Mexico 87504-2088

DISTRICT I

P.O. Box 1980, Hobbs, NM 88240

DISTRICT II

P.O. Drawer DD, Artesia, NM 88210

DISTRICT III

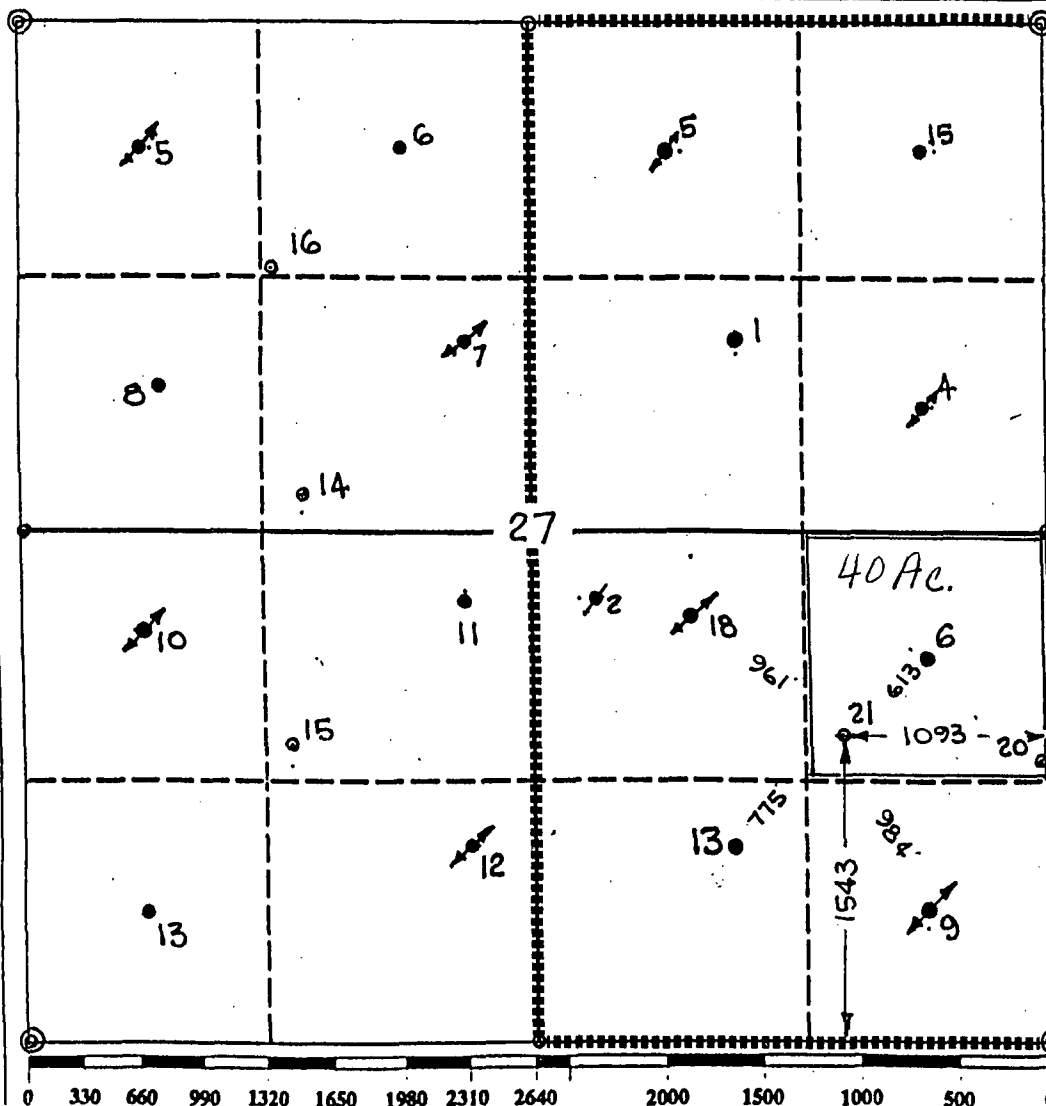
1000 Rio Brazos Rd., Aztec, NM 87410

WELL LOCATION AND ACREAGE DEDICATION PLAT

All Distances must be from the outer boundaries of the section

Operator TEXACO EXPLORATION AND PRODUCTION Inc.			Lease W.H. Rhodes Federal "B" NCT-1		Well No. 21
Unit Letter I	Section 27	Township 26-South	Range 37-East	County Lea	
Actual Footage Location of Well: 1543 feet from the South line and 1093 feet from the East line					
Ground level Elev. 2974	Producing Formation Yates/7 RVRS		Pool Rhodes Yates Seven Rivers	Dedicated Acreage: 40 Acres	

1. Outline the acreage dedicated to the subject well by colored pencil or hatchure marks on the plat below.
2. If more than one lease is dedicated to the well, outline each and identify the ownership thereof (both as to working interest and royalty).
3. If more than one lease of different ownership is dedicated to the well, have the interest of all owners been consolidated by communization, unitization, force-pooling, etc.?
☐ Yes ☐ No If answer is "yes" type of consolidation _____
If answer is "no" list the owners and tract descriptions which have actually been consolidated. (Use reverse side of this form if necessary.)
No allowable will be assigned to the well until all interests have been consolidated (by communization, unitization, forced-pooling, or otherwise) or until a non-standard unit, eliminating such interest, has been approved by the Division.



OPERATOR CERTIFICATION

I hereby certify that the information contained herein is true and complete to the best of my knowledge and belief.

Signature

Royce D. Mariott

Printed Name

Royce D. Mariott

Position

Division Surveyor

Company

Texaco Expl. & Prod. Inc.

Date

September 9, 1992

SURVEYOR CERTIFICATION

I hereby certify that the well location shown on this plat was plotted from field notes of actual surveys made by me or under my supervision, and that the same is true and correct to the best of my knowledge and belief.

Date Surveyed

September 3, 1992

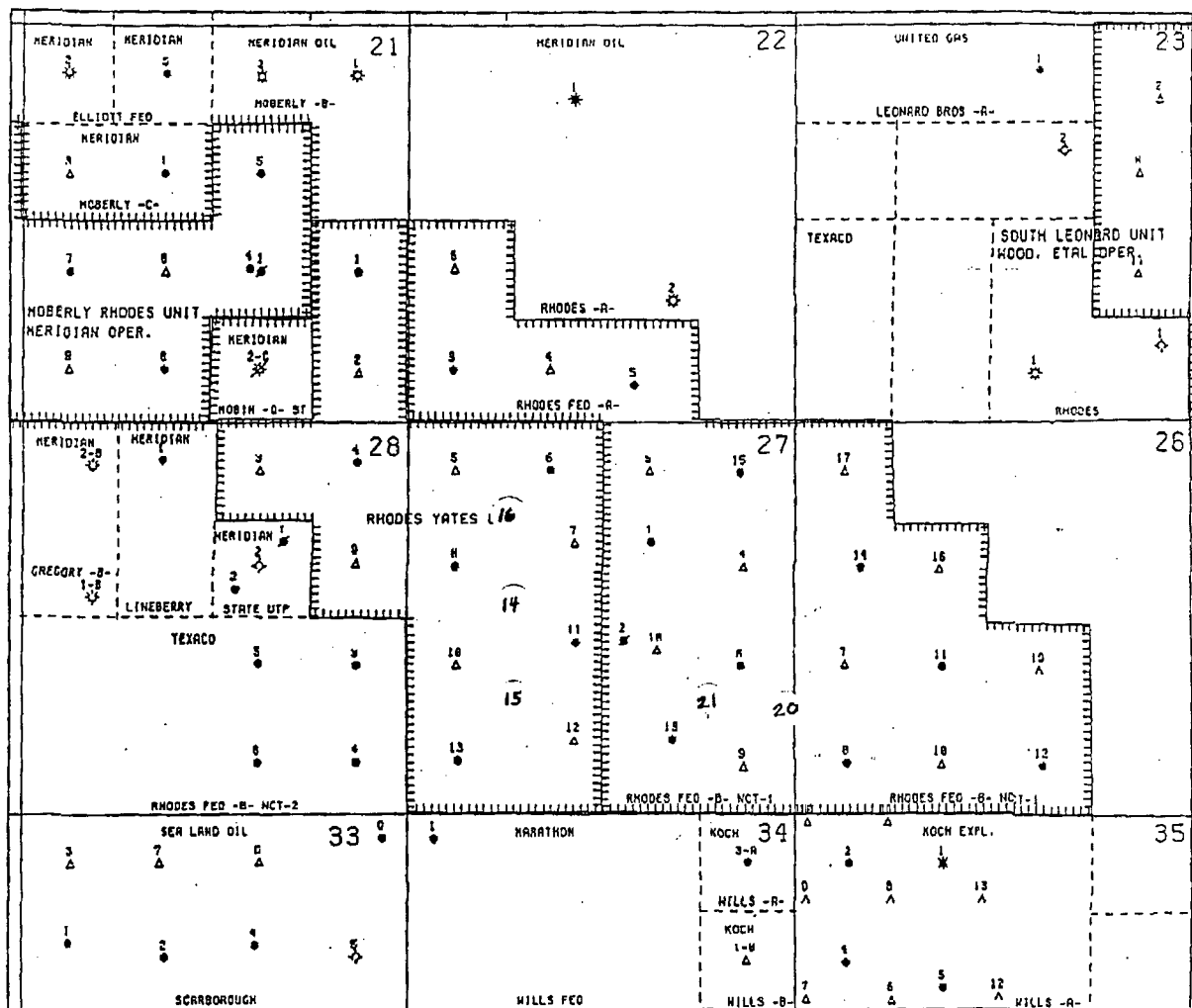
Signature & Seal of
Professional Surveyor

John S. Piper

Certificate No.

7254 John S. Piper

Sheet of



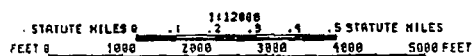
PHASE I

- OIL WELL
- ▲ P&A OIL WELL
- △ INJECTION
- ★ GAS WELL
- ✱ P&A GAS WELL
- ✱ OIL & GAS WELL
- ✱ P&A OIL & GAS WELL
- U&H
- LOCATION

INFILL DRLG

⊙ CONVERSION

⊙ INJ MODIFICATION



TEXACO INC.		
HOBBS	NH	U. S. A.
RHODES YATES WATERFLOOD		
LEA COUNTY, NEW MEXICO		
1:12000	K. E. SAGLER	2-10-51