

## STATE OF NEW MEXICO

## ENERGY, MINERALS AND NATURAL RESOURCES DEPARTMENT

## OIL CONSERVATION DIVISION



BRUCE KING  
GOVERNOR



POST OFFICE BOX 2088  
STATE LAND OFFICE BUILDING  
SANTA FE, NEW MEXICO 87504  
(505) 827-5800

February 14, 1992

Amerada Hess Corporation  
P.O. Box 2040  
Tulsa, Oklahoma 74102

Attention: J.R. Wilson

*Administrative Order NSL-3097*

Dear Mr. Willson:

Reference is made to your application dated January 8, 1992 for five nonstandard oil well locations to permit the completion of an efficient production/injection pattern within the North Monument Grayburg - San Andres Unit Waterflood Project, established by Division Order No. R-9596, dated October 15, 1992, Eunice Monument Grayburg - San Andres Pool, North Monument Grayburg - San Andres Unit Area, Lea County, New Mexico.

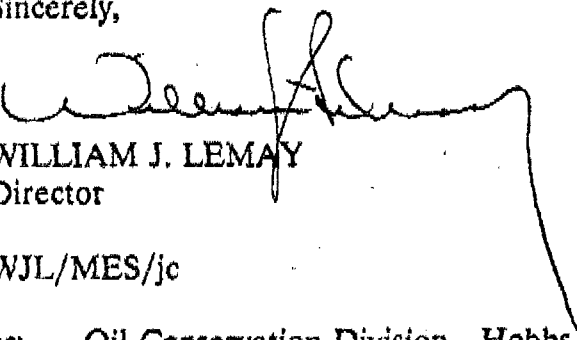
Unit Block No.	Well No.	Footage Location	Unit-Section-Township-Range (NMPM)	Dedicated 40-Acre Tract
9	25	2523' FSL - 235' FEL	I-25-19S-36E	NE/4 SE/4
5	30	1134' FSL - 2630' FWL	N-19-19S-37E	SE/4 SW/4
4	36	200' FSL - 2545' FWL	N-24-19S-36E	SE/4 SW/4
2	25	1330' FSL - 1300' FEL	I-18-19S-37E	NE/4 SE/4
6	19	1510' FNL - 2502' FWL	C-20-19S-37E	NE/4 NW/4

**NOTE:** THE EXCEPTION LOCATION REQUEST MUST GO TO ATTENTION OF MIKE STOGNER IN SANTA FE OFFICE, WITH A STATEMENT THAT THE EXCEPTION LOCATION ARE IN THE INSIDE 40 AC UNITS AND THAT AMERADA HESS CORPORATION IS THE OFFSET OPERATOR TO ALL EXCEPTION LOCATION.

Amerada Hess Corporation  
Administrative Order SL-3097  
Page 2  
February 14, 1992

By authority granted me under the provisions of General Rule 104F.(1), the above described unorthodox oil well locations are hereby approved.

Sincerely,



WILLIAM J. LEMAY  
Director

WJL/MES/jc

cc: Oil Conservation Division - Hobbs  
File: Case No. 10252

## WELL LOCATION AND ACREAGE DEDICATION PLAT

All distances must be from the outer boundaries of the Section

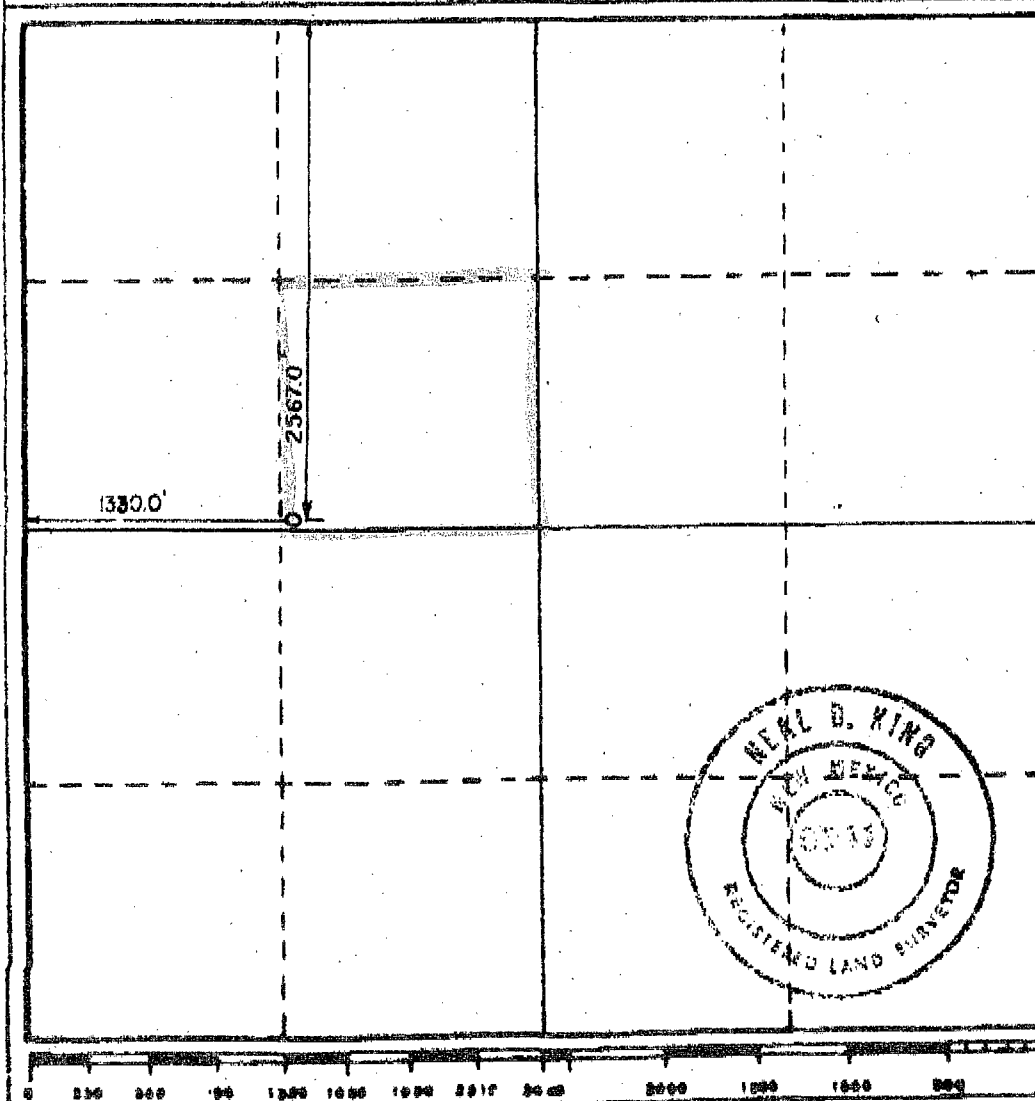
Operator <b>AMERADA-HESS CORPORATION</b>			Lease <b>N. MONUMENT G/SA UNIT BLK 10 Production</b>		Well No. <b>22</b>
Unit Letter <b>F</b>	Section <b>30</b>	Township <b>19S</b>	Range <b>37E</b>	County <b>Lea</b>	
Actual Footage Location of Well: <b>2567.0</b> feet from the <b>North</b> line and <b>1330</b> feet from the <b>West</b> line					
Ground Level Elev. <b>3633.7</b>	Producing Formation <b>GRAYBURG SAN ANDRES</b>		Pool <b>EUNICE MONUMENT G/SA</b>		Dedicated Acreage: <b>40</b> Acres

1. Outline the acreage dedicated to the subject well by colored pencil or hatchure marks on the plat below.
2. If more than one lease is dedicated to the well, outline each and identify the ownership thereof (both as to working interest and royalty).
3. If more than one lease of different ownership is dedicated to the well, have the interests of all owners been consolidated by communitization, unitization, force-pooling, etc?

☐ Yes ☐ No If answer is "yes;" type of consolidation UNITIZED ORDER #R-9494

If answer is "no;" list the owners and tract descriptions which have actually been consolidated. (Use reverse side of this form if necessary.) UNITIZED ORDER #R-9494

No allowable will be assigned to the well until all interests have been consolidated (by communitization, unitization, forced-pooling, or otherwise) or until a non-standard unit, eliminating such interests, has been approved by the Commission.



## CERTIFICATION

I hereby certify that the information contained herein is true and complete to the best of my knowledge and belief

Name

J. R. WILSON

Position

SUPERVISOR, DRUG ADMIN SVS

Company

AMERADA HESS CORPORATION

Date

04/21/92

I hereby certify that the well location shown on this plat was plotted from field notes of actual surveys made by me or under my supervision, and that the same is true and correct to the best of my knowledge and belief.

April 13, 1992

Date Surveyed

Registered Professional Engineer  
and/or Land Surveyor

Certificate No.

R.L.S. 6541

OBSERVATION COMMISSION  
WELL LOCATION AND ACREAGE DEDICATION PLATIP 3C-103  
Supersedes C-120  
Effective 14-85

All distances must be from the outer boundaries of the Section

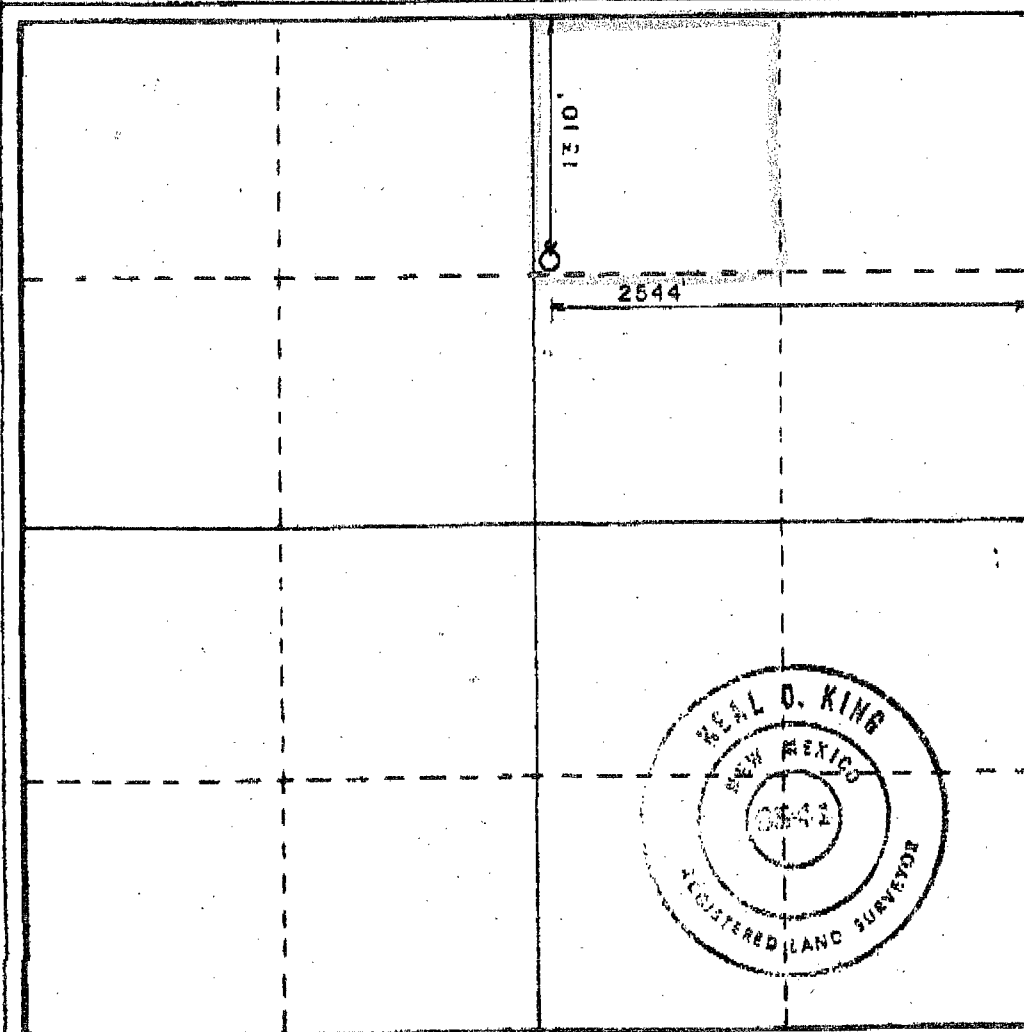
Operator <b>AMERADA-HESS CORPORATION</b>			Lease <b>N. MONUMENT G/SA UNIT BLK 6 Production</b>		Well No. <b>18</b>
Unit Letter <b>B</b>	Section <b>20</b>	Township <b>19S</b>	Range <b>37E</b>	County <b>Lea</b>	
Actual Footage Location of Well: <b>1310</b> feet from the <b>North</b> line and <b>2544</b> feet from the <b>East</b> line					
Ground Level Elev. <b>3678</b>	Producing Formation <b>GRAYBURG SAN ANDRES</b>		Pool <b>EUNICE MONUMENT G/SA</b>		Dedicated Acreage: <b>40</b> Acres

1. Outline the acreage dedicated to the subject well by colored pencil or hatchure marks on the plat below.
2. If more than one lease is dedicated to the well, outline each and identify the ownership thereof (both as to working interest and royalty).
3. If more than one lease of different ownership is dedicated to the well, have the interests of all owners been consolidated by communitization, unitization, force-pooling, etc?

☐ Yes ☐ No If answer is "yes," type of consolidation UNITIZED ORDER #R-9494

If answer is "no," list the owners and tract descriptions which have actually been consolidated. (Use reverse side of this form if necessary.) UNITIZED ORDER #R-9494

No allowable will be assigned to the well until all interests have been consolidated (by communitization, unitization, forced-pooling, or otherwise) or until a non-standard unit, eliminating such interests, has been approved by the Commission.



## CERTIFICATION

I hereby certify that the information contained herein is true and complete to the best of my knowledge and belief.

*J. R. Wilson*

Name

J. R. WILSON

Position

SUPERVISOR, DRLG ADMIN SVS

Company

AMERADA HESS CORPORATION

Date

04/21/92

I hereby certify that the well location shown on this plat was plotted from field notes of actual surveys made by me or under my supervision, and that the same is true and correct to the best of my knowledge and belief.

April 13, 1992

Date Surveyed

Registered Professional Engineer  
and or Land Surveyor

*Real O. King*

Certificate No.

R.L.S. 6541

# NEW MEXICO OIL CONSERVATION COMMISSION WELL LOCATION AND ACREAGE DEDICATION PLAT

P.5  
Form C-102  
Supersedes C-138  
Effective 1-4-85

All distances must be from the corner boundaries of the Section

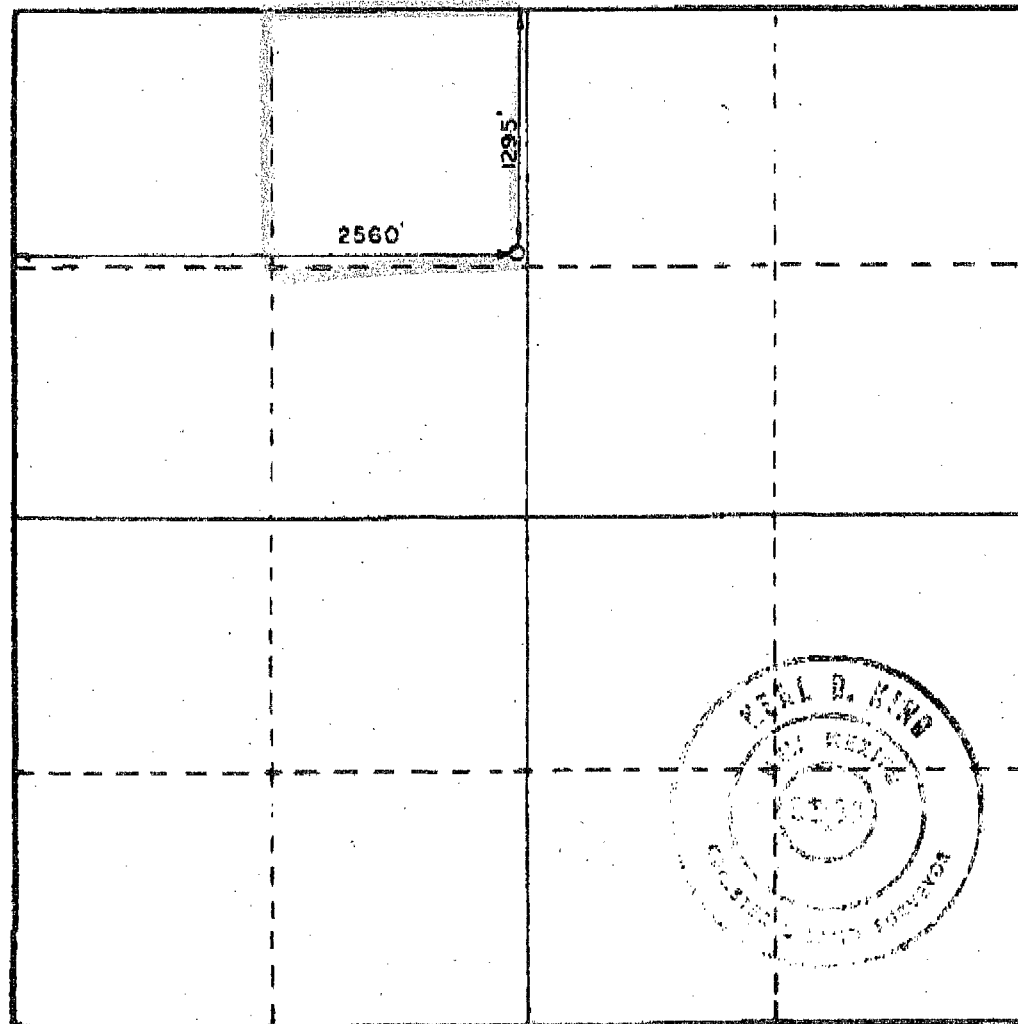
Operator <b>AMERADA-HESS CORPORATION</b>			Lease <b>N. MONUMENT G/SA UNIT BLK 9- Production</b>			Well No. <b>19</b>
Unit Letter <b>C</b>	Section <b>25</b>	Township <b>19S</b>	Range <b>36E</b>	County <b>Lea</b>		
Actual Footage Location of Well: <b>1295</b> feet from the <b>North</b> line and <b>2560</b> feet from the <b>West</b> line						
Ground Level Elev. <b>3676</b>	Producing Formation <b>GRAYBURG SAN ANDRES</b>		Pool <b>EUNICE MONUMENT G/SA</b>		Dedicated Acreage: <b>40</b> Acres	

1. Outline the acreage dedicated to the subject well by colored pencil or hatchure marks on the plat below.
2. If more than one lease is dedicated to the well, outline each and identify the ownership thereof (both as to working interest and royalty).
3. If more than one lease of different ownership is dedicated to the well, have the interests of all owners been consolidated by communization, unitization, force-pooling, etc?

☐ Yes ☐ No If answer is "yes," type of consolidation UNITIZED ORDER #R-9494

If answer is "no," list the owners and tract descriptions which have actually been consolidated. (Use reverse side of this form if necessary.) UNITIZED ORDER #R-9494

No allowable will be assigned to the well until all interests have been consolidated (by communization, unitization, forced-pooling, or otherwise) or until a non-standard unit, eliminating such interests, has been approved by the Commission.



## CERTIFICATION

I hereby certify that the information contained herein is true and complete to the best of my knowledge and belief.

*J. R. Wilson*

Name  
**J. R. WILSON**

Position  
**SUPERVISOR, DRUG ADMIN SVS**

Company  
**AMERADA HESS CORPORATION**

Date  
**04/21/92**

I hereby certify that the well location shown on this plat was plotted from field notes of actual surveys made by me or under my supervision, and that the same is true and correct to the best of my knowledge and belief.

**April 13, 1992**

Date Surveyed

Registered Professional Engineer  
and or Land Surveyor

*Paul D. King*

Certificate No. **R.L.S. 6541**



NEW MEXICO OIL CONSERVATION COMMISSION  
WELL LOCATION AND ACREAGE DEDICATION PLAT

All distances must be from the outer boundaries of the Section

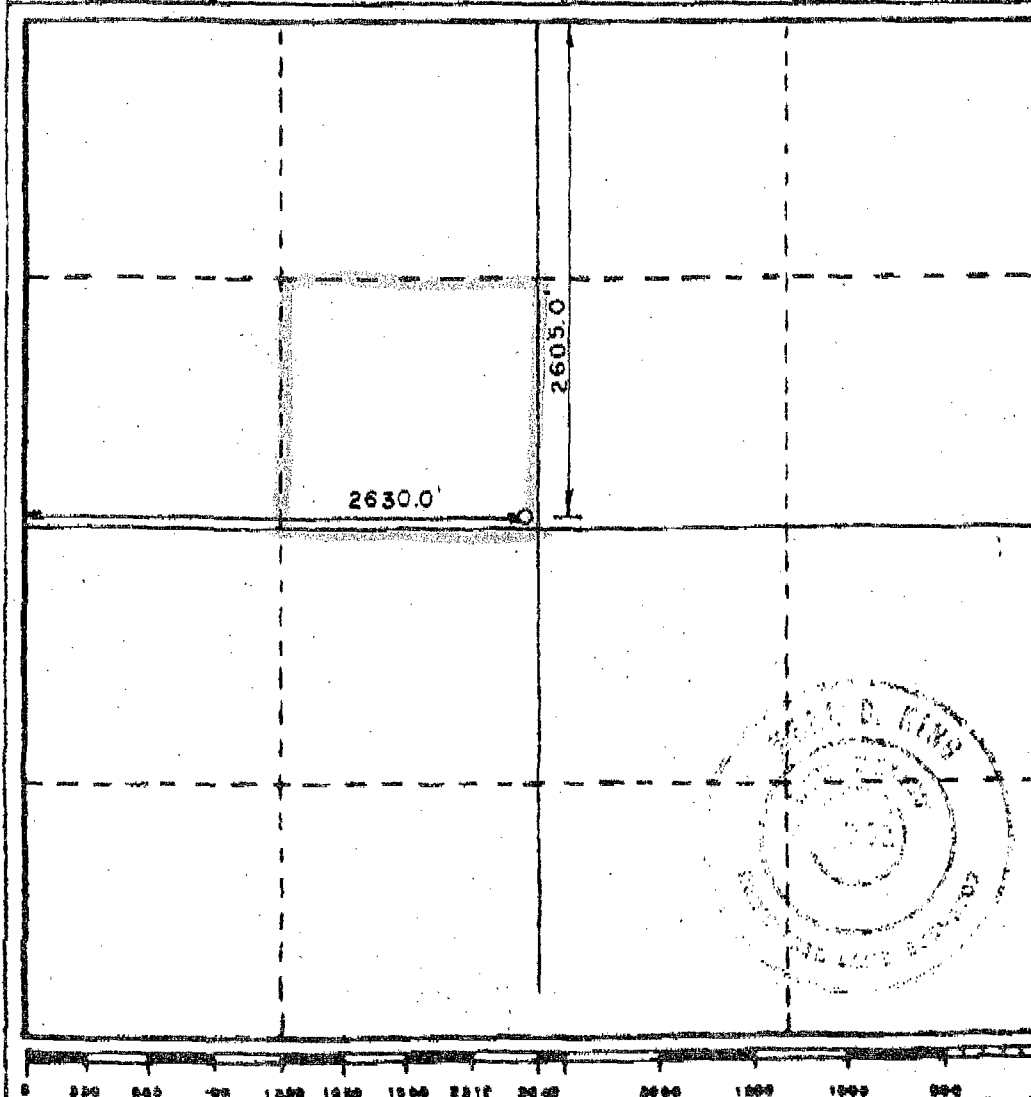
Operator <b>AMERADA-HESS CORPORATION</b>				Lease N. MONUMENT G/SA UNIT BLK 5 Production		Well No. <b>22</b>
Unit Letter <b>F</b>	Section <b>19</b>	Township <b>19S</b>	Range <b>37E</b>	County <b>Lea</b>		
Actual Footage Location of Well: <b>2605.0</b> feet from the <b>North</b> line and <b>2630.0</b> feet from the <b>West</b> line						
Ground Level Elev. <b>3684.3</b>	Producing Formation <b>GRAYBURG SAN ANDRES</b>		Pool <b>EUNICE MONUMENT G/SA</b>		Dedicated Acreage: <b>40</b>	Acre

1. Outline the acreage dedicated to the subject well by colored pencil or hatchure marks on the plat below.
2. If more than one lease is dedicated to the well, outline each and identify the ownership thereof (both as to working interest and royalty).
3. If more than one lease of different ownership is dedicated to the well, have the interests of all owners been consolidated by communitization, unitization, force-pooling, etc?

☐ Yes ☐ No If answer is "yes," type of consolidation UNITIZED ORDER #R-9494

If answer is "no," list the owners and tract descriptions which have actually been consolidated. (Use reverse side of this form if necessary.) UNITIZED ORDER #R-9494

No allowable will be assigned to the well until all interests have been consolidated (by communitization, unitization, forced-pooling, or otherwise) or until a non-standard unit, eliminating such interests, has been approved by the Commission.



## CERTIFICATION

I hereby certify that the information contained herein is true and complete to the best of my knowledge and belief.

*J. R. Wilson*

Name  
**J. R. WILSON**

Position  
**SUPERVISOR, DRUG ADMIN SVS**

Company  
**AMERADA HESS CORPORATION**

Date  
**04/21/92**

I hereby certify that the well location shown on this plat was plotted from field notes of actual surveys made by me or under my supervision, and that the same is true and correct to the best of my knowledge and belief.

**April 13, 1992**

Date Surveyed

Registered Professional Engineer  
and or Land Surveyor

*Neal D. King*

Certificate No. **R.L.S. 6541**

# NEW MEXICO OIL CONSERVATION COMMISSION WELL LOCATION AND ACREAGE DEDICATION PLAT

Form C-182  
Supersedes C-120  
Effective 1-4-83

All dimensions must be from the corner boundaries of the Section

Bk 2

Operator <b>AMERADA-HESS CORPORATION</b>			Lease <b>Proudution</b>		Well No. <b>25</b>
Unit Letter <b>I</b>	Section <b>18</b>	Township <b>19S</b>	Range <b>37E</b>	County <b>Lea</b>	
Actual Footage Location of Well: <b>1330</b> feet from the <b>South</b> line and <b>1300</b> feet from the <b>East</b> line					
Ground Level Elev. <b>3697.6</b>	Producing Formation <b>GRAYBURG SAN ANDRES</b>		Pool <b>EUNICE MONUMENT G/SA</b>		Dedicated Acreage: <b>40</b> Acres

1. Outline the acreage dedicated to the subject well by colored pencil or hatchure marks on the plat below.

2. If more than one lease is dedicated to the well, outline each and identify the ownership thereof (both as to working interest and royalty).

3. If more than one lease of different ownership is dedicated to the well, have the interests of all owners been consolidated by communitization, unitization, force-pooling, etc?

☐ Yes ☐ No If answer is "yes," type of consolidation UNITIZED ORDER #R-9494

If answer is "no," list the owners and tract descriptions which have actually been consolidated. (Use reverse side of this form if necessary.) UNITIZED ORDER #R-9494

No allowable will be assigned to the well until all interests have been consolidated (by communitization, unitization, forced-pooling, or otherwise) or until a non-standard unit, eliminating such interests, has been approved by the Commission.

**CERTIFICATION**

I hereby certify that the information contained herein is true and complete to the best of my knowledge and belief.

*J. R. Wilson*  
Name  
**J. R. WILSON**  
Position  
**SUPERVISOR, DRLG ADMIN. SVS.**  
Company  
**AMERADA HESS CORPORATION**  
Date  
**12/20/91**

I hereby certify that the well location shown on this plat was plotted from field notes of actual surveys made by me or under my supervision, and that the same is true and correct to the best of my knowledge and belief.

**December 9, 1991**  
Date Surveyed

Registered Professional Engineer and/or Land Surveyor  
*Neal D. King*  
Certificate No. **R.L.S. 6541**

**NEW MEXICO OIL CONSERVATION COMMISSION  
WELL LOCATION AND ACREAGE DEDICATION PLAT**

P.6  
Form C-182  
Supersedes C-128  
Effective 14-83

All distances must be from the outer boundaries of the Section

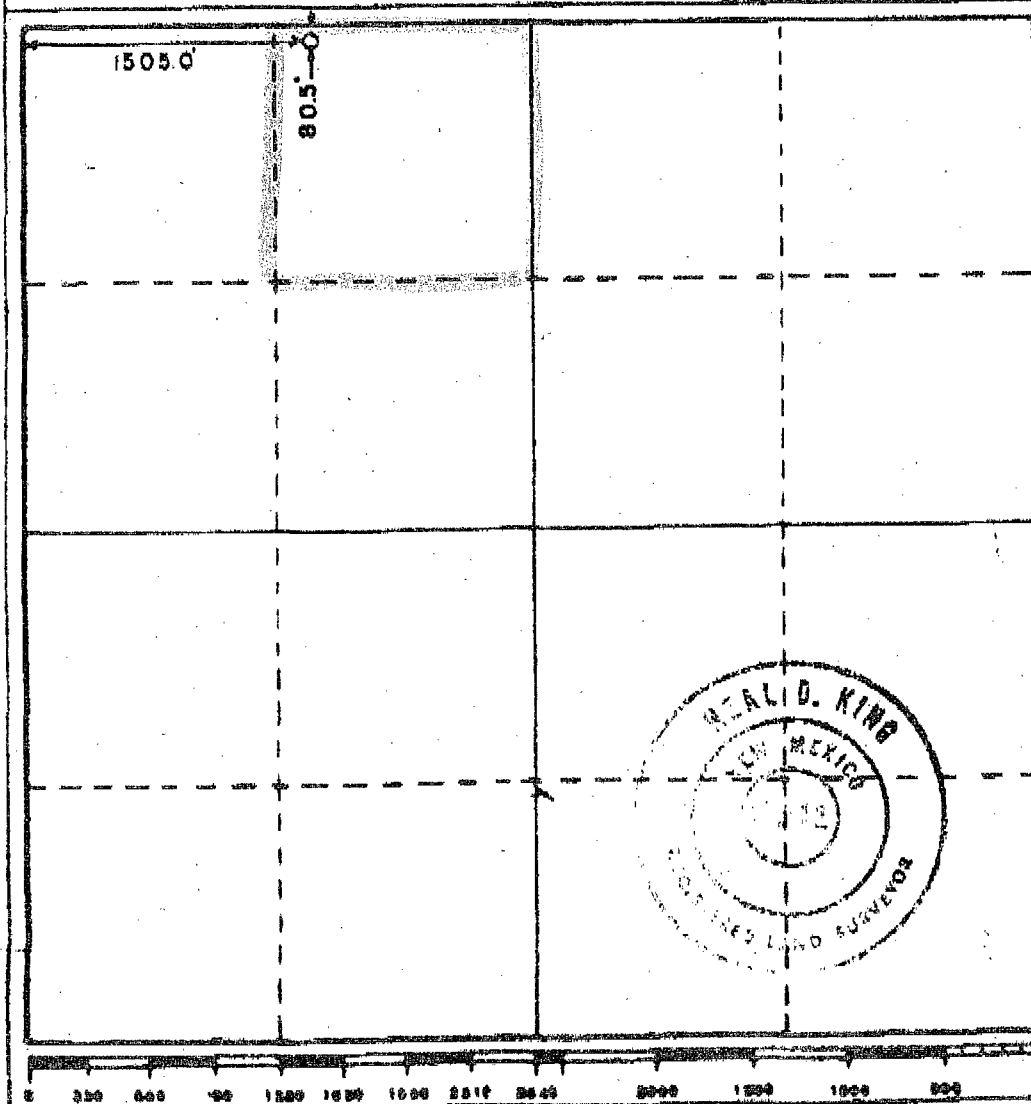
Operator <b>AMERADA-HESS CORPORATION</b>			Lease N. MONUMENT G/SA. UNIT BLK 14 Production		Well No. <b>19</b>
Unit Letter <b>C</b>	Section <b>36</b>	Township <b>19S</b>	Range <b>36E</b>	County <b>Lea</b>	
Actual Footage Location of Well: <b>80.5</b> feet from the <b>North</b> line and <b>1505.0</b> feet from the <b>West</b> line					
Ground Level Elev. <b>3609.6</b>	Producing Formation <b>GRAYBURG SAN ANDRES</b>		Pool <b>EUNICE MONUMENT G/SA</b>		Dedicated Acreage: <b>40</b> Acres

1. Outline the acreage dedicated to the subject well by colored pencil or hatchure marks on the plat below.
2. If more than one lease is dedicated to the well, outline each and identify the ownership thereof (both as to working interest and royalty).
3. If more than one lease of different ownership is dedicated to the well, have the interests of all owners been consolidated by communitization, unitization, force-pooling, etc?

☐ Yes ☐ No If answer is "yes" type of consolidation UNITIZED ORDER #R-9494

If answer is "no," list the owners and tract descriptions which have actually been consolidated. (Use reverse side of this form if necessary.) UNITIZED ORDER #R-9494

No allowable will be assigned to the well until all interests have been consolidated (by communitization, unitization, forced-pooling, or otherwise) or until a non-standard unit, eliminating such interests, has been approved by the Commission.



**CERTIFICATION**

I hereby certify that the information contained herein is true and complete to the best of my knowledge and belief.

*J. R. Wilson*

Name

**J. R. WILSON**

Position

**SUPERVISOR, DRUG ADMIN SVS**

Company

**AMERADA HESS CORPORATION**

Date

**04/21/92**

I hereby certify that the well location shown on this plat was plotted from field notes of actual surveys made by me or under my supervision, and that the same is true and correct to the best of my knowledge and belief.

**April 13, 1992**

Date Surveyed

Registered Professional Engineer  
and or Land Surveyor

*Realid. King*

Certification No.

**R.L.S. 6541**

## AMERADA HESS CORPORATION

January 8, 1992

P. O. BOX 2040  
TULSA, OKLAHOMA 74102  
918-599-4200

State Land Office Building  
310 Old Santa Fe Trail, Rm 206  
Santa Fe, New Mexico 87504

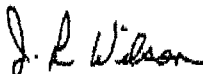
Attn: David R. Cantanach

Amerada Hess Corporation is requesting exception to the well location requirements for the following "NORTH MONUMENT GRAYBURG SAN ANDRES UNIT WELLS": Blk 5 #30, Blk 2 #25, Blk 4 #30, Blk 6 #19, Blk 9 #25. These well locations comply with Rule 104 F (1) requirements.

All of the above locations were moved to their present position due to either existing pipe lines or roads interfering with the previous location.

See attached Survey Plats and also Unit Plats of well locations.

Sincerely,



J. R. Wilson  
Amerada Hess Corporation

DRW:ti  
attachments

**NEW MEXICO OIL CONSERVATION COMMITTEE  
WELL LOCATION AND ACREAGE DEDICATION PLAT**

Form C-102  
Supersedes C-120  
Effective 1-4-65

All distances must be from the outer boundaries of the Section

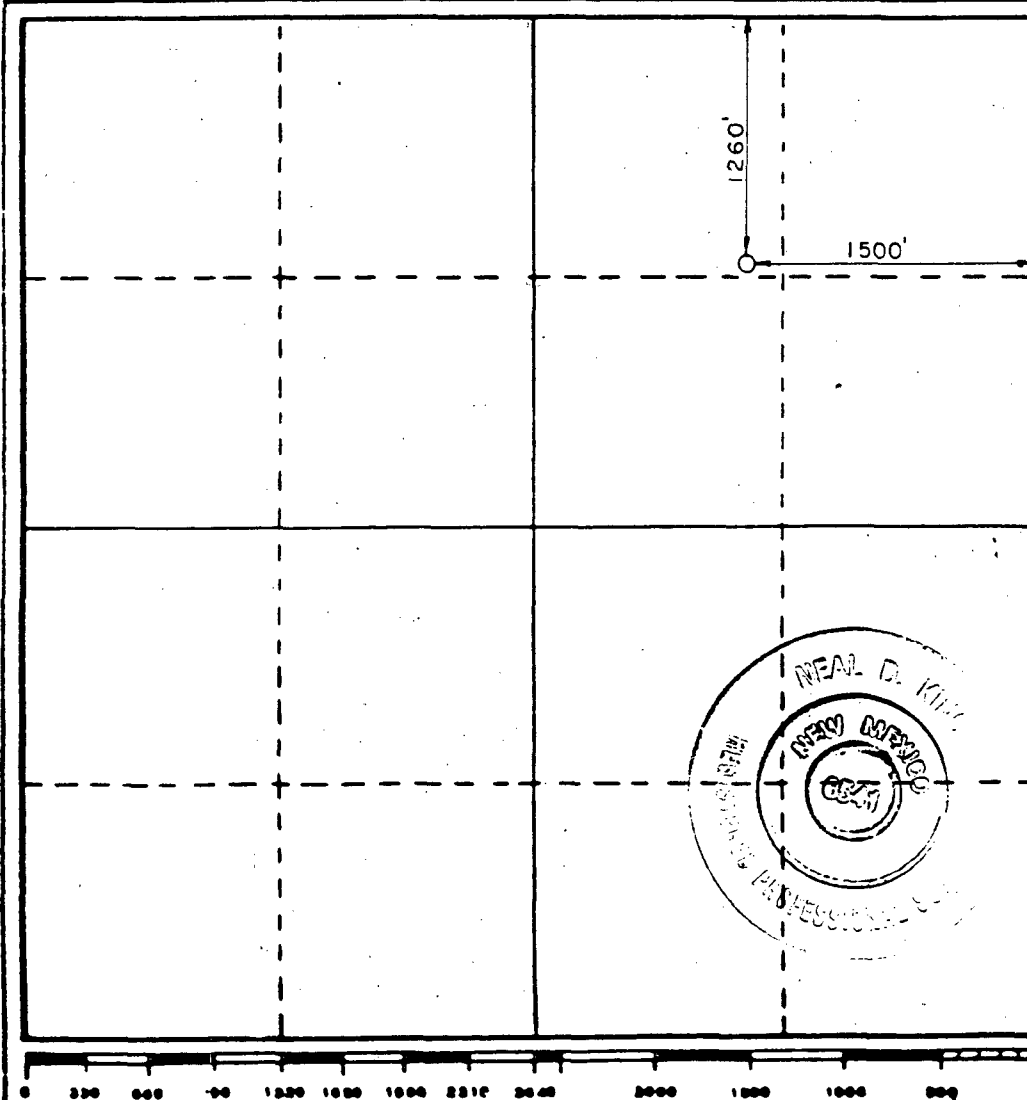
Operator <b>AMERADA-HESS CORPORATION</b>			Lease <b>Water Supply</b>		Well No. <b>18</b>
Unit Letter <b>B</b>	Section <b>29</b>	Township <b>19S</b>	Range <b>37E</b>	County <b>Lea</b>	
Actual Footage Location of Well: <div style="display: flex; justify-content: space-between;"> <span>1500 feet from the East line and</span> <span>1260 feet from the North line</span> </div>					
Ground Level Elev. <b>3626</b>	Producing Formation <b>GREYBURG SAN ANDRES</b>		Pool <b>EUNICE MONUMENT G/SA</b>		Dedicated Acreage: <b>N/A</b> Acres

1. Outline the acreage dedicated to the subject well by colored pencil or hatchure marks on the plat below.
2. If more than one lease is dedicated to the well, outline each and identify the ownership thereof (both as to working interest and royalty).
3. If more than one lease of different ownership is dedicated to the well, have the interests of all owners been consolidated by communitization, unitization, force-pooling, etc?

☐ Yes   ☐ No   If answer is "yes," type of consolidation UNITIZED ORDER #R-9494

If answer is "no," list the owners and tract descriptions which have actually been consolidated. (Use reverse side of this form if necessary.) UNITIZED ORDER #R-9494

No allowable will be assigned to the well until all interests have been consolidated (by communitization, unitization, forced-pooling, or otherwise) or until a non-standard unit, eliminating such interests, has been approved by the Commission.



**CERTIFICATION**

I hereby certify that the information contained herein is true and complete to the best of my knowledge and belief.

*J. R. Wilson*

Name J. R. WILSON  
 Position SUPERVISOR DRLG. ADMIN SVS.  
 Company AMERADA HESS CORP.  
 Date 12/17/91

I hereby certify that the well location shown on this plat was plotted from field notes of actual surveys made by me or under my supervision, and that the same is true and correct to the best of my knowledge and belief.

December 9, 1991

Date Surveyed \_\_\_\_\_  
 Registered Professional Engineer and/or Land Surveyor  
*Neal D. King*  
 Certificate No. R.E.S. 6541