

District I  
1625 N French Dr., Hobbs, NM 88240  
District II  
1301 W. Grand Avenue, Artesia, NM 88210  
District III  
1000 Rio Brazos Road, Aztec, NM 87410  
District IV  
1220 S. St. Francis Dr., Santa Fe, NM 87505

State of New Mexico  
Energy Minerals and Natural Resources

Oil Conservation Division  
1220 South St. Francis Dr.  
Santa Fe, NM 87505

Form C-141  
Revised October 10, 2003

Submit 2 Copies to appropriate  
District Office in accordance  
with Rule 116 on back  
side of form

Release Notification and Corrective Action

1RP-1201

OPERATOR

☐ Initial Report

☒ Final Report

Name of Company	Plains Marketing, L. P.	Contact	Camille Reynolds
Address	3112 W. US Hwy 82, Lovington, NM 88260	Telephone No.	(505) 441-0965
Facility Name	LOCKHART B-14 4-INCH	Facility Type	4" Steel Pipeline
SRS:	2007-063		

Surface Owner	James Bryant	Mineral Owner		Lease No.	
---------------	--------------	---------------	--	-----------	--

LOCATION OF RELEASE

Unit Letter	Section	Township	Range	Feet from the	North/South Line	Feet from the	East/West Line	County
G	14	21S	37E					Lea

Latitude 32°, 28', 51.8" North Longitude 103°, 07', 44.4" West.

NATURE OF RELEASE

Type of Release	Crude Oil	Volume of Release	16 barrels	Volume Recovered	4 barrels
Source of Release	4-inch Steel Pipeline	Date and Hour of Occurrence	11 Feb 2007 @ 1100	Date and Hour of Discovery	11 Feb 2007 @ 1130
Was Immediate Notice Given?	XX Yes <input type="checkbox"/> No <input type="checkbox"/> Not Required	If YES, To Whom?	Pat Caperton (Richards)		
By Whom?	Camille Reynolds	Date and Hour	12 Feb 2007 @ 0930		
Was a Watercourse Reached?	<input type="checkbox"/> Yes XX <input type="checkbox"/> No	If YES, Volume Impacted	16 barrels		

If a Watercourse was Impacted, Describe Fully.\*

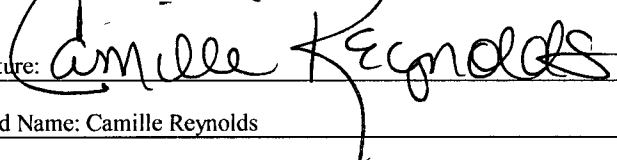
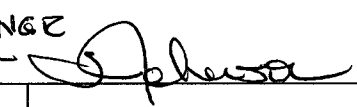
JAN - 3 2008

Describe Cause of Problem and Remedial Action Taken.\* External corrosion of the 4-inch steel pipeline resulted in the release of sweet crude oil. The pipeline was purged, cut and capped. Pipeline idled; therefore, pressure and volume are not applicable.

Describe Area Affected and Cleanup Action Taken.\* The crude oil release site was excavated; the impacted soil was removed and replaced with clean soil. A hole, near adjacent to the excavation, confirmation soil samples were collected from the floor of the excavation. Once the excavation confirmation soil samples were below NMOCD regulatory standards, mechanical screening of the stockpiled material was conducted. The screened caliche rock was utilized as partial backfill and approximately 994 cubic yards of screened soils were transported to Lea Station Land Farm. Backfill material was obtained from the landowner and the excavation was backfilled with the site contoured to the original surrounding rangeland topography. Reseeding with approved landowner grass seed was conducted in August 2007.

SEE ATTACHED BASIN ENVIRONMENTAL SERVICE TECHNOLOGIES CLOSURE REQUEST, DATED 19 DECEMBER 2007, WITH ATTACHMENTS FOR DETAILS OF REMEDIAL ACTIVITIES CONDUCTED.

I hereby certify that the information given above is true and complete to the best of my knowledge and understand that pursuant to NMOCD rules and regulations all operators are required to report and/or file certain release notifications and perform corrective actions for releases, which may endanger public health or the environment. The acceptance of a C-141 report by the NMOCD marked as "Final Report" does not relieve the operator of liability should their operations have failed to adequately investigate and remediate contamination that pose a threat to ground water, surface water, human health or the environment. In addition, NMOCD acceptance of a C-141 report does not relieve the operator of responsibility for compliance with any other federal, state, or local laws and/or regulations.

Signature: 	OIL CONSERVATION DIVISION	
Printed Name: Camille Reynolds	Approved by District Supervisor: 	
Title: Remediation Coordinator	Approval Date: 1-3-08	Expiration Date: _____
E-mail Address: cjreynolds@paalp.com	Conditions of Approval:	1RP-1201
Date: 19 December 2007	Phone: (505) 441-0965	

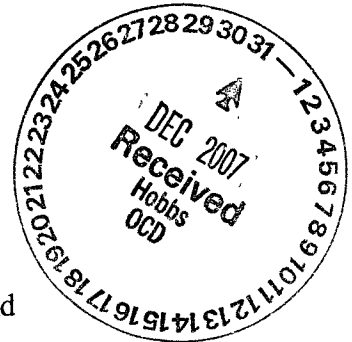
# ***Basin Environmental Service Technologies, LLC***

2800 Plains Highway  
P. O. Box 301  
Lovington, New Mexico 88260  
kdutton@basinenv.com  
Office: (505) 396-2378 Fax: (505) 396-1429



19 December 2007

Mr. Larry Johnson  
New Mexico Energy, Minerals and Natural Resources Department  
New Mexico Oil Conservation Division, District 1  
1625 N. French Drive  
Hobbs, New Mexico 88240



Re: Closure Request, Lockhart B-14 4-Inch (231735)  
Plains Marketing, L. P. Preliminary Site Investigation Report and  
Remediation/Closure Plan, dated 09 May 2007  
Unit G (SW ¼, NE ¼) Section 14, Township 21 South  
Lea County, New Mexico  
Plains SRS Number: 2007-063  
NMOCD File Number: 1RP-1201

**RECEIVED**

JAN - 3 2008

Dear Mr. Johnson:

**HOBBS OCD**

Basin Environmental Service Technologies, LLC (Basin), on behalf of Plains Marketing, L. P. (Plains), is submitting this request for closure of the Lockhart B-14 4-Inch remediation site at the above referenced location. Soil remediation activities were successfully accomplished as proposed in the New Mexico Oil Conservation Division (NMOCD) approved Preliminary Site Investigation Report and Remediation/Closure Plan, dated 09 May 2007.

Basin, at the request of Plains, mobilized to a crude oil pipeline release on 12 February 2007, located on the idled Lockhart B-14 4-Inch Pipeline after Plains operations personnel contained the crude oil release by cold cutting and capping the idled pipeline. Upon arrival at the release site, Basin initiated excavation of the release point and flow path area with the impacted soil stockpiled on a 6-mil poly-liner adjacent to the site. As reported on the initial C-141, dated 13 February 2007, approximately 16 barrels of crude oil were released and 4 barrels were recovered. The NMOCD ranking criteria for the Lockhart B-14 4-Inch release site was >19, which sets the soil remediation levels for benzene, toluene, ethylbenzene, and xylenes (BTEX), and total petroleum hydrocarbons – gasoline range organics/diesel range organics (TPH-GRO/DRO) at 10 mg/kg for benzene, 50 mg/kg for total BTEX and 100 mg/kg for TPH-GRO/DRO.

The following NMOCD approved remedial activities were accomplished at the Lockhart B-14 4-Inch release site:

- In February, March and April 2007, Basin conducted excavation activities at the release point and flow path area. The final dimensions of the excavated area were approximately 78 feet long by 35 feet wide (north to south) ranging in depth from approximately 3 to 6 feet below ground surface (bgs) and 65 feet long by 30 feet wide (west to east) ranging in depth from approximately 1.5 feet to 3 feet bgs. The impacted soils were placed on a 6-mil poly-liner adjacent to the excavation for future remedial activities. Approximately 1000 cubic yards of impacted soil were excavated and stockpiled on-site. See attached Figure 2, Excavation Site Map.
- On 06 March 2007, while excavating the west flow path area, a suspected backfilled pit area was discovered. Notification by Basin personnel to Plains was accomplished and as instructed, numerous digital photos were taken of the suspected pit area. Additionally, trenches were excavated throughout the suspected pit area, which indicated a pit existed. Plains and Basin representatives met with Mr. Larry Johnson, NMOCD District I, and the discovery of the pit area was discussed. Mr. Johnson recommended a historical search be conducted. The University of New Mexico, Earth Data Analysis Center, was contacted and historical aerial photos were ordered. The historical aerial photos indicated an active pit area existed in 1955 through 1968 and a distressed area was evident from 1977 through 2005. NMOCD is currently investigating historical data to determine the operator of the abandoned pit area.
- On 16 March 2007, three (3) confirmation soil samples were collected from the floor of the excavated area ranging in depth from 2 to 4 feet bgs (see Figure 3). The three (3) confirmation soil samples were analyzed for constituent concentrations of BTEX and TPH-GRO/DRO. Laboratory results of the confirmation soil samples collected from the floor of the excavation indicated that constituent concentrations of BTEX were not detected above laboratory method detection limits for three (3) soil samples. Laboratory results indicated that constituent concentrations of TPH-GRO/DRO were below NMOCD regulatory standards for the northwest floor soil sample, slightly above NMOCD regulatory standards for the southeast floor soil sample, but was within the laboratory reporting margin-of-error and were reported above NMOCD regulatory standards for the release point soil sample.
- In April 2007, over excavation of the release point area was conducted to a depth of approximately six (6) feet bgs. On 18 April 2007, a confirmation soil sample was collected at approximately six (6) feet bgs and submitted for analysis. Laboratory results indicated that constituent concentrations of BTEX were not detected above laboratory method detection limits and TPH-GRO/DRO concentrations were reported below NMOCD regulatory standards.

- A Preliminary Site Investigation Report and Remediation/Closure Plan, dated 09 May 2007, was submitted to NMOCD Hobbs District I and subsequently approved. The approved plan included no further excavation activities based on laboratory results from soil sampling, mechanically screen the stockpiled material on-site, transport the screened impacted soil to Plains Lea Station Land Farm (LSLF), utilize the screened caliche rock as partial backfill and obtain backfill from the landowner. Upon completion of backfilling the excavation, contour the excavation to the surrounding rangeland grade and reseed the site with approved grass seed.
- In June 2007, mechanical screening of the on-site stockpiled material was conducted. The mechanically screened caliche rock was utilized as partial backfill and approximately 994 cubic yards of screened impacted soil was transported to LSLF. Backfill material was obtained from the landowner and backfilling of the excavated area was accomplished with the excavation contoured to the surrounding rangeland grade. Reseeding activities with approved landowner grass seed was accomplished in August 2007.

The remediation activities were completed in accordance with the NMOCD approved Plains Marketing, L. P., Preliminary Site Investigation Report and Remediation/Closure Plan, dated 09 May 2007. Based on the results of the NMOCD approved remediation activities conducted at the Lockhart B-14 4-Inch release site, Basin, on behalf of Plains, requests that the NMOCD consider the soil issue at this site eligible for closure under the *New Mexico Oil Conservation Division Guidelines for Remediation of Leaks, Spills and Releases (1993)*.

Should you have any questions or comments, please contact me at (505) 441-2124.

Sincerely,



Ken Dutton

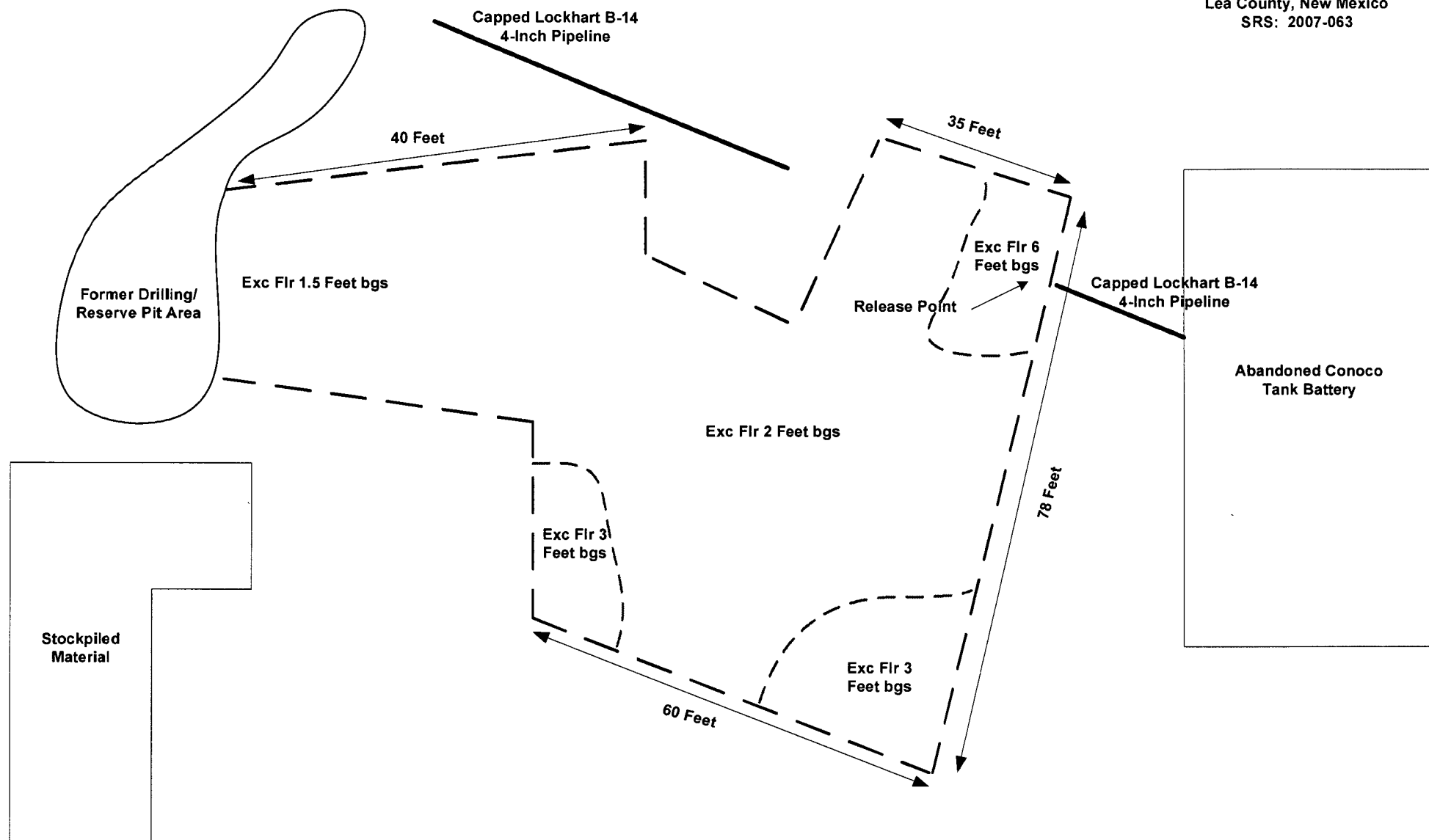
Basin Environmental Services

Attachments: Table 1, Soil Chemistry Results  
 Figure 2, Excavation Site Map  
 Figure 3, Excavation Site Map & Soil Sampling Locations  
 Digital Photos  
 NMOCD C-141 (Initial)  
 NMOCD C-141 (Final)

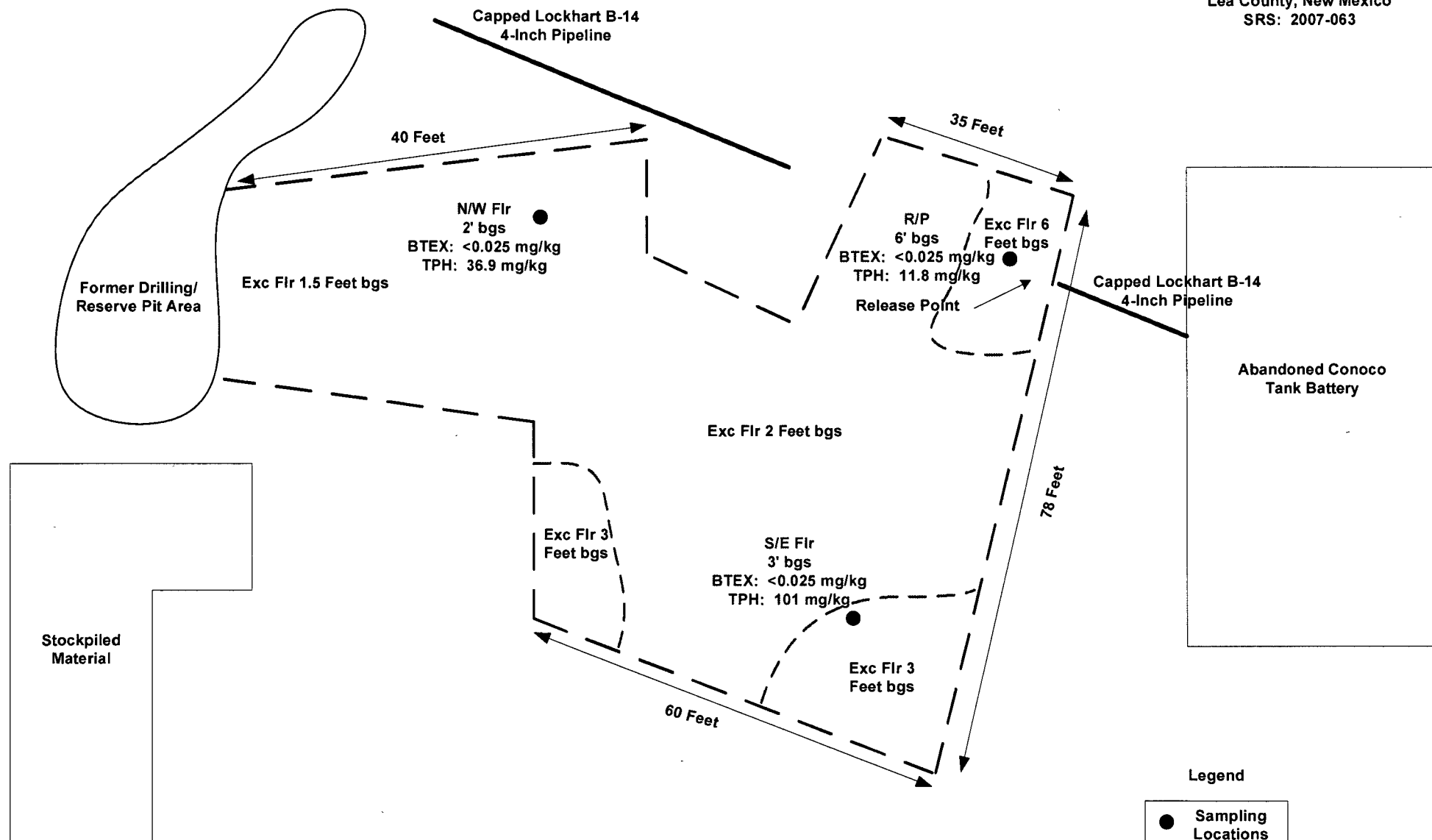
## SOIL CHEMISTRY RESULTS

**PLAINS MARKETING, L.P.  
LOCKHART B-14 4"  
LEA COUNTY, NEW MEXICO  
SRS: 2007-063**

[illegible]



TITLE
<b>Figure 2</b> <b>Excavation Site Map</b>
DRAWN BY
<b>Basin Environmental Services</b> <b>kad</b>



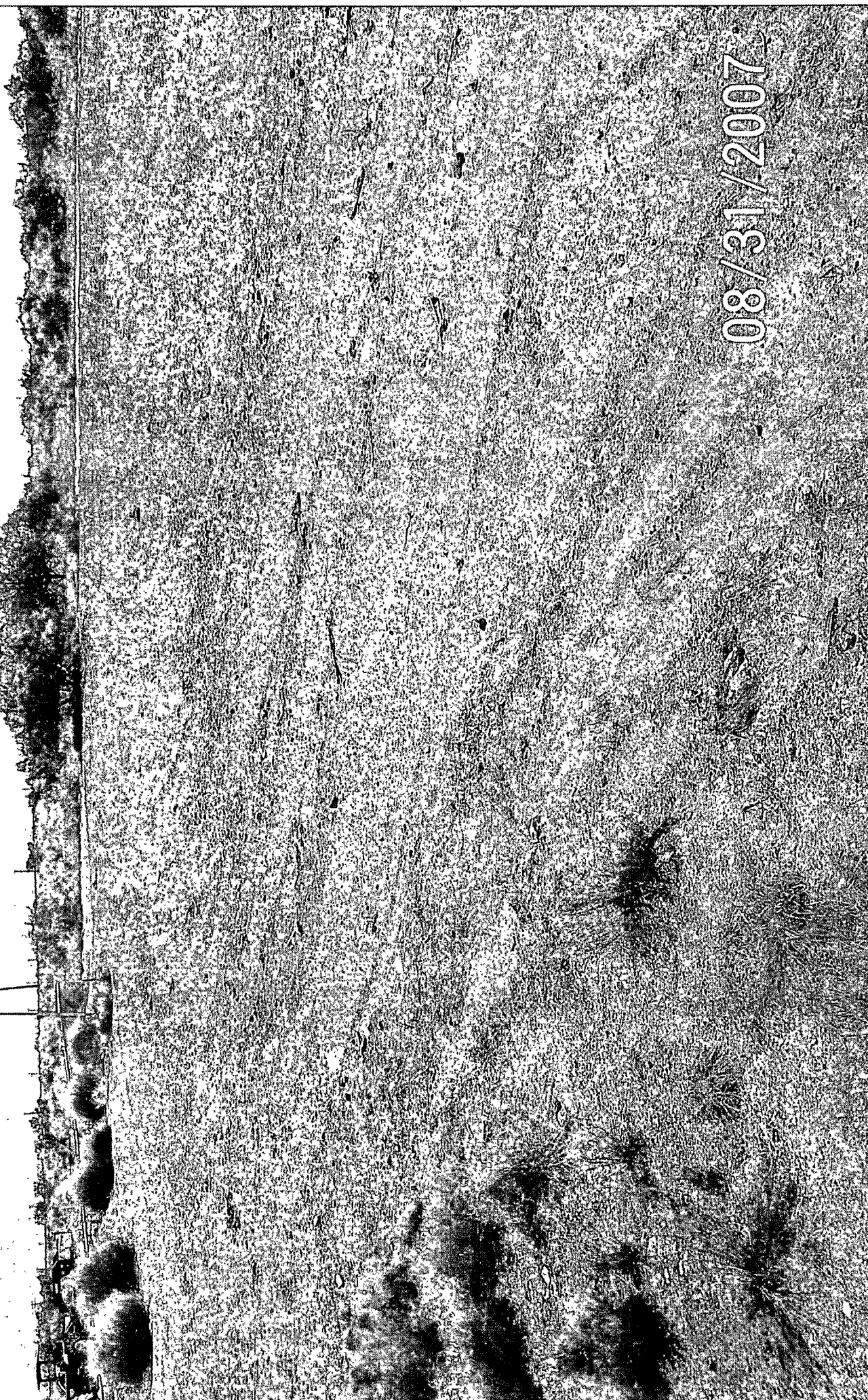
TITLE  
**Figure 3**  
**Final Soil Sampling Locations**

DRAWN BY  
**Basin Environmental Services**  
**kad**

-----  
 Caliche Road  
 -----

Plains Marketing, L. P.  
Lockhart B-14 4-Inch  
SW/NE S14, T21S, R37E  
Lea County, NM  
Plains SRS: 2007-063

08/31/2007





Plains Marketing, L. P.  
Lockhart B-14 4-Inch  
SW/NE S14, T21S, R37E  
Lea County, NM  
Plains SRS: 2007-063

08/31/2007

Plains Marketing, L. P.  
Lockhart B-14 4-Inch  
SW/NE S14, T21S, R37E  
Lea County, NM  
Plains SRS: 2007-063

08/31/2007



Plains Marketing, L.P.  
Lockhart B-14 4-Inch  
SW/NE S14, T21S, R37E  
Lea County, NM  
Plains SRS: 2007-063

08/31/2007

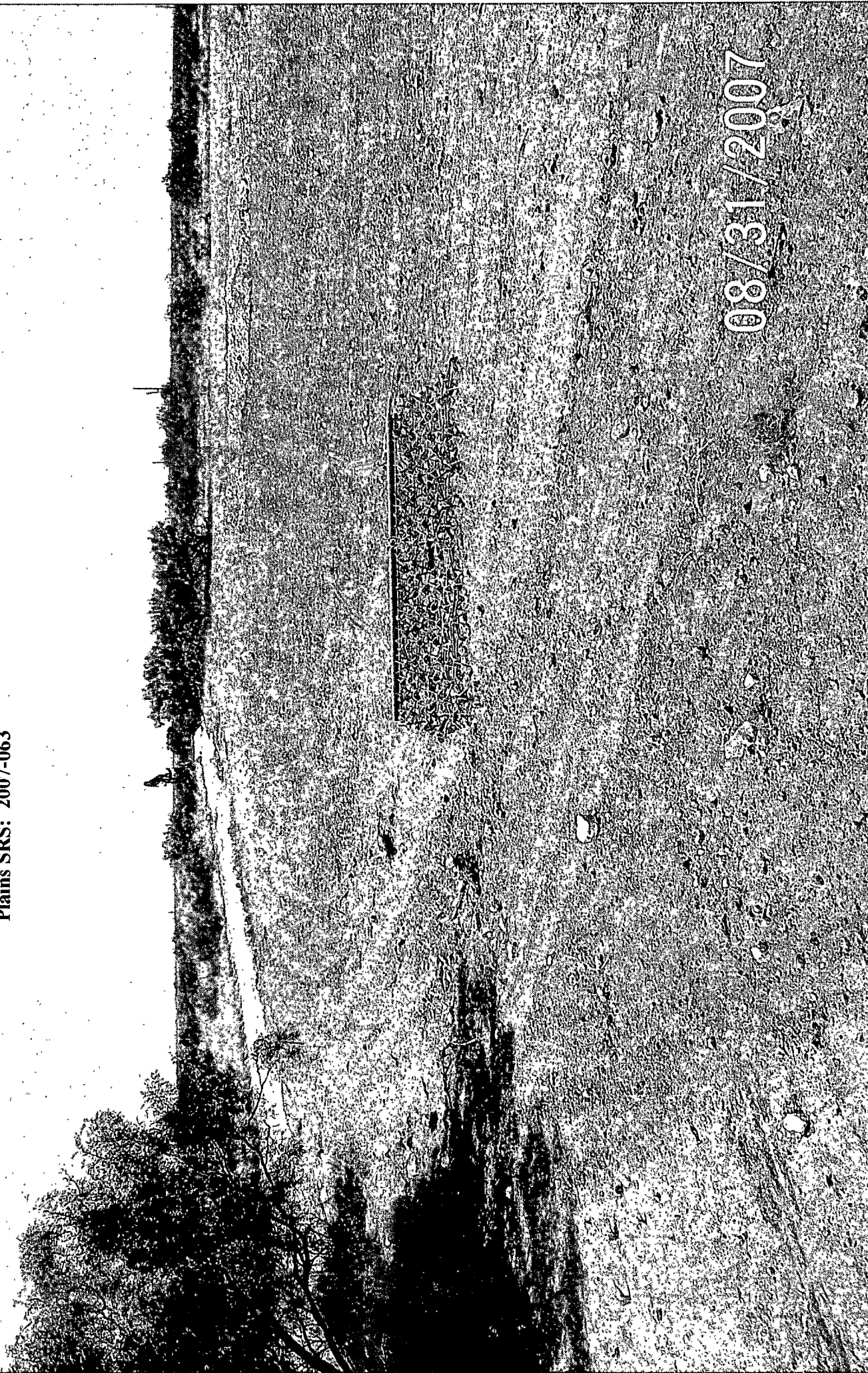


Plains Marketing, L. P.  
Lockhart B-14 4-Inch  
SW/NE S14, T21S, R37E  
Lea County, NM  
Plains SRS: 2007-063

08/31/2007

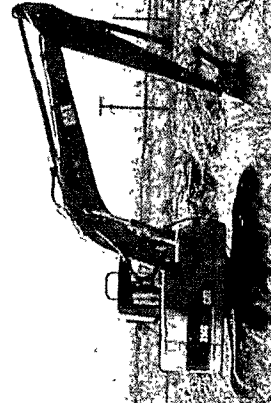
Plains Marketing, L. P.  
Lockhart B-14 4-Inch  
SW/NE S14, T21S, R37E  
Lea County, NM  
Plains SRS: 2007-063

08/31/2007

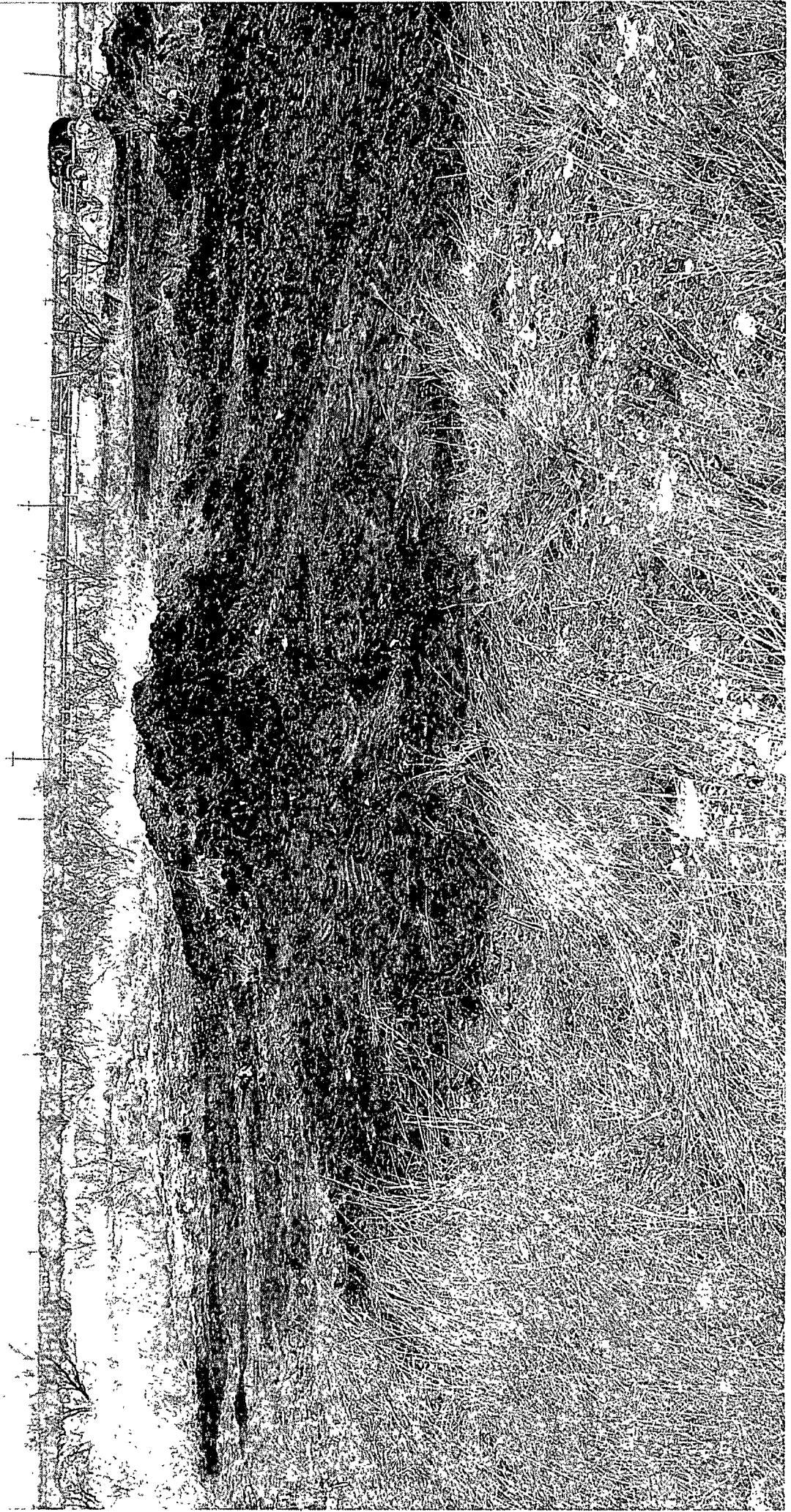




Plains Marketing, L. P.  
Lockhart B-14 4 Inch  
SW/NE S14, T21S, R37E  
Lea County, NM  
Plains SRS: 2007-063



**Plains Marketing, L. P.  
Lockhart B-14 4"  
SW/NE S14, T21S, R37E  
Lea County, NM  
Plains SRS: 2007-063**





**Plains Marketing, L. P.  
Lockhart B-14 4"  
SW/NE S14, T21S, R37E  
Lea County, NM  
Plains SRS: 2007-063**





District I  
1625 N. French Dr., Hobbs, NM 88240  
District II  
1301 W. Grand Avenue, Artesia, NM 88210  
District III  
1000 Rio Brazos Road, Aztec, NM 87410  
District IV  
1220 S. St. Francis Dr., Santa Fe, NM 87505

State of New Mexico  
Energy Minerals and Natural Resources

Oil Conservation Division  
1220 South St. Francis Dr.  
Santa Fe, NM 87505

Form C-141  
Revised October 10, 2003

Submit 2 Copies to appropriate  
District Office in accordance  
with Rule 116 on back  
side of form

Release Notification and Corrective Action

OPERATOR

x Initial Report ☐ Final Report

Name of Company Plains Pipeline	Contact Camille Reynolds	
Address 3112 W. US Hwy 82, Lovington, NM 88260	Telephone No. 505-441-0965	
Facility Name Lockhart B-14 4 Inch	Facility Type 4" Steel Pipeline	
Surface Owner James Bryant	Mineral Owner	Lease No.

LOCATION OF RELEASE

Unit Letter G	Section 14	Township 21S	Range 37E	Feet from the	North/South Line	Feet from the	East/West Line	County Lea
------------------	---------------	-----------------	--------------	---------------	------------------	---------------	----------------	---------------

Latitude 32° 28' 51.8"

Longitude 103° 07' 44.4"

NATURE OF RELEASE

Type of Release Crude Oil	Volume of Release 16 barrels	Volume Recovered 4 barrels
Source of Release 4" Steel Pipeline	Date and Hour of Occurrence 02/11/2007 @ 11:00	Date and Hour of Discovery 02/11/2007 @ 11:30
Was Immediate Notice Given? X Yes <input type="checkbox"/> No <input type="checkbox"/> Not Required	If YES, To Whom? Pat Caperton	
By Whom? Camille Reynolds	Date and Hour 02/12/2007 @ 9:30	
Was a Watercourse Reached? <input type="checkbox"/> Yes <input checked="" type="checkbox"/> No	If YES, Volume Impacting the Watercourse.	

If a Watercourse was Impacted, Describe Fully.\*

Describe Cause of Problem and Remedial Action Taken External corrosion of the 4 inch steel pipeline resulted in release of sweet crude oil. The line was purged, cut and capped. The line is inactive so information concerning volume produced and pressure on line is unavailable.

Describe Area Affected and Cleanup Action Taken.\* The impacted soil was excavated and stockpiled on plastic. Aerial extent of surface impact was 9,375 square feet.

I hereby certify that the information given above is true and complete to the best of my knowledge and understand that pursuant to NMOCD rules and regulations all operators are required to report and/or file certain release notifications and perform corrective actions for releases which may endanger public health or the environment. The acceptance of a C-141 report by the NMOCD marked as "Final Report" does not relieve the operator of liability should their operations have failed to adequately investigate and remediate contamination that pose a threat to ground water, surface water, human health or the environment. In addition, NMOCD acceptance of a C-141 report does not relieve the operator of responsibility for compliance with any other federal, state, or local laws and/or regulations.

Signature: <u>Camille Reynolds</u>	OIL CONSERVATION DIVISION	
Printed Name: Camille Reynolds	Approved by District Supervisor: <u>[Signature]</u>	
Title: Remediation Coordinator	Approval Date: 3.28.07	Expiration Date: 6.28.07
E-mail Address: cireynolds@paalp.com	Conditions of Approval: <u>Final Report 54</u>	Attached <input type="checkbox"/>
Date: 02/13/2007	Phone: 505-441-0965	

\* Attach Additional Sheets If Necessary

RPH 1201 Facility FPAC 0708825032  
Incident - NPAC 0708825112  
Application - FPAC 0708825212