

SHANKS LOGGING
 CARLSBAD, NEW MEXICO 88221
 P. O. BOX 1179
 (505) 885-0458

COMPANY: **POGO PRODUCING COMPANY**
 WELL: **FEDERAL 27 No. 1**
 FIELD: **WILDCAT**
 COUNTY: **LEA**
 LOCATION: **330' FSL @ 2310' FWL SEC. 27 T. 22 S., R. 32 E**
 LOGGED BY: **SHANKS & HENSLEY**
 INTERVAL LOGGED: **4600'**
 DATE LOGGED: **6/24/92**
 ELEV. GL: **3637.8** KB
 EXECTOR-66: **3653**

STATE: **NM**
 T. 22 S., R. 32 E
 MOBIL (505) 369-2333
 TO 8850 369-2236
 TO 7/3/92

DRILLING RATE
 MIN. FT. 4600

CONGLOMERATE (60)
 GRANITE (62)
 GRANITE WASH (K4)
 SHALE (77)
 ANHYDRITE (77)
 CHERT (A4)
 SILTSTONE (63)

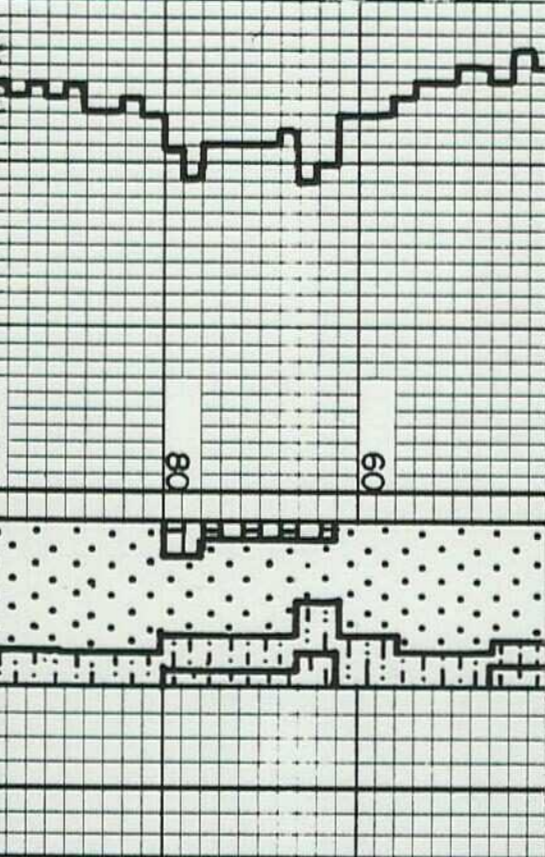
NEW BIT (NB)
 CIRCULATED OUT (CO)
 SLOPE TEST (ST)
 DRILL STEM TEST (DST)
 NO RETURN (NR)
 REPORTED SHOW (RS)

FLUOR. OUT (F)
 STAIN (S)

REMARKS: PH, CL, W, V, F, GK, CR

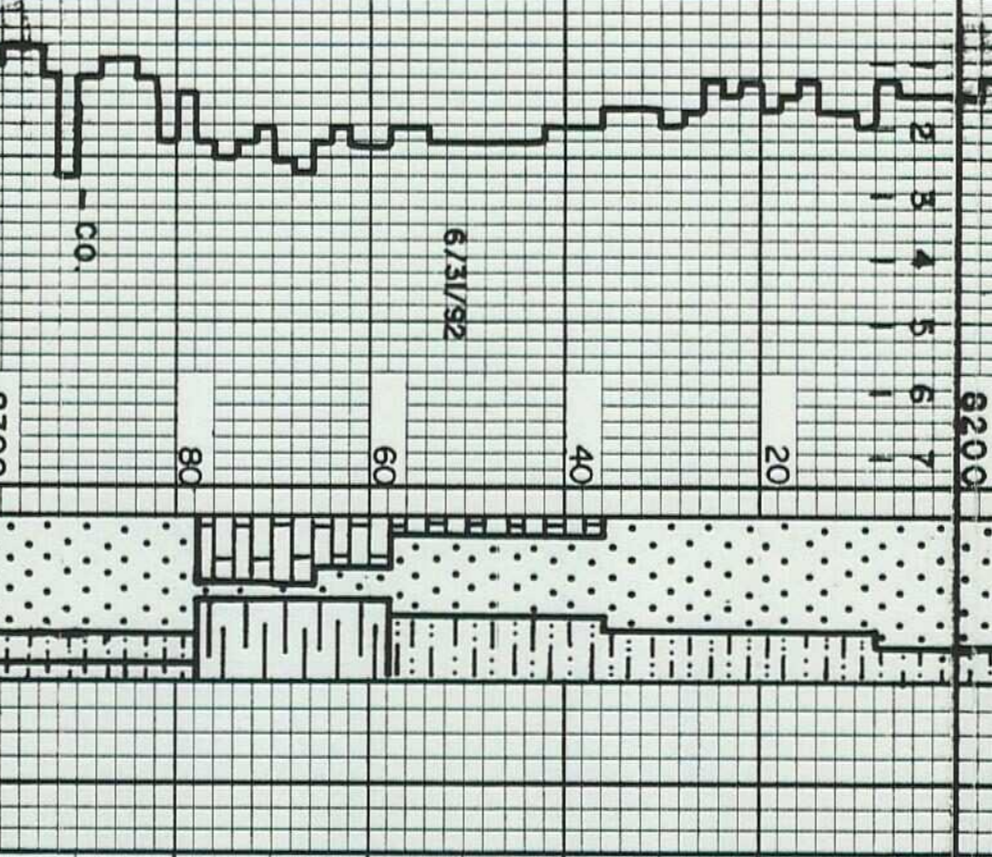
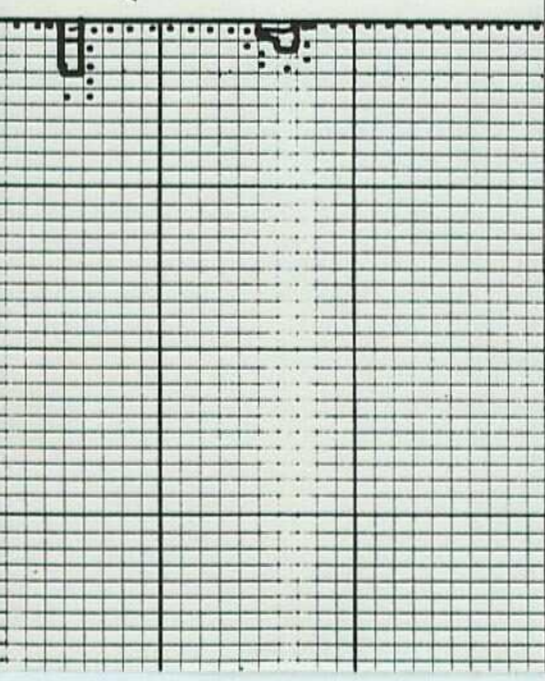
GAS ANALYSIS
 METHANE (1)
 ETHANE (2)
 PROPANE (3)
 BUTANE (4)

PENTANE (5)
 TOTAL (6)
 GAS FROM CUTTINGS (0-0-0-0-0)



SS: lt gy, frstd, vfgn, sbnd, shang, wll strd, con, prly calc cmtd, abnt slt, sh inc, ls tr bent inc.

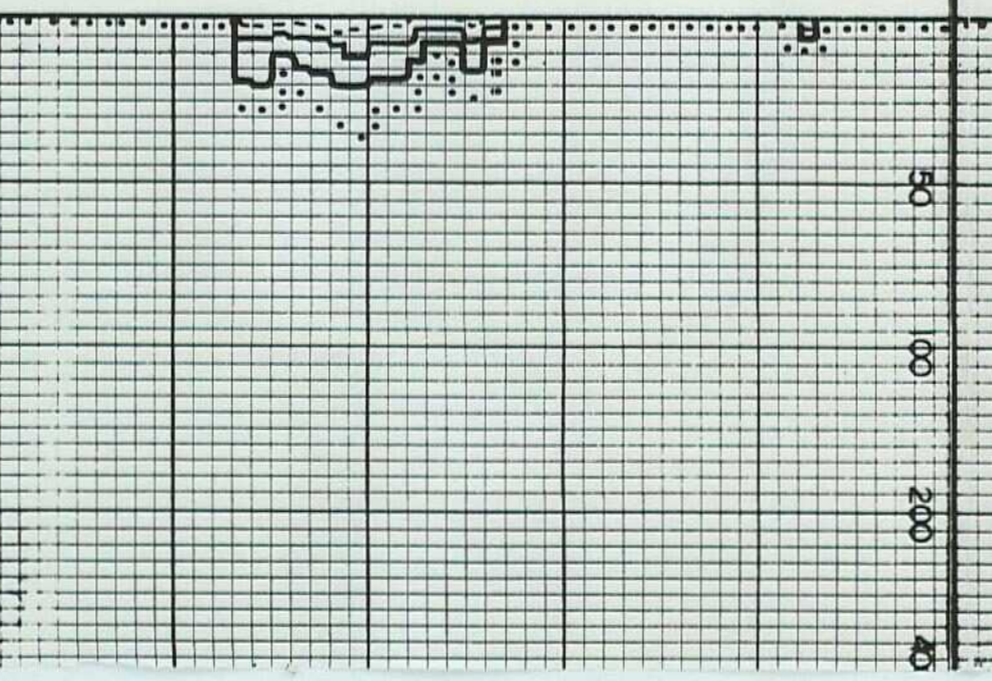
SS: lt gy clr, frstd, vfgn, fgm, sbng, uncon, sily, con, prly cmtd, cin.



SS: lt gy frstd, clr, fgm, pred con, prly cmtd, sbng, sbnd, sily, sh tr, uncon, n integran, 10 to 208 blv/gn fluor, slw dli mlky wh ct, bre, yel red rng.

SS: lt gy frstd, clr, fgm, con, prly cmtd, uncon, shang sbnd sily, shly, ls inc, bent.

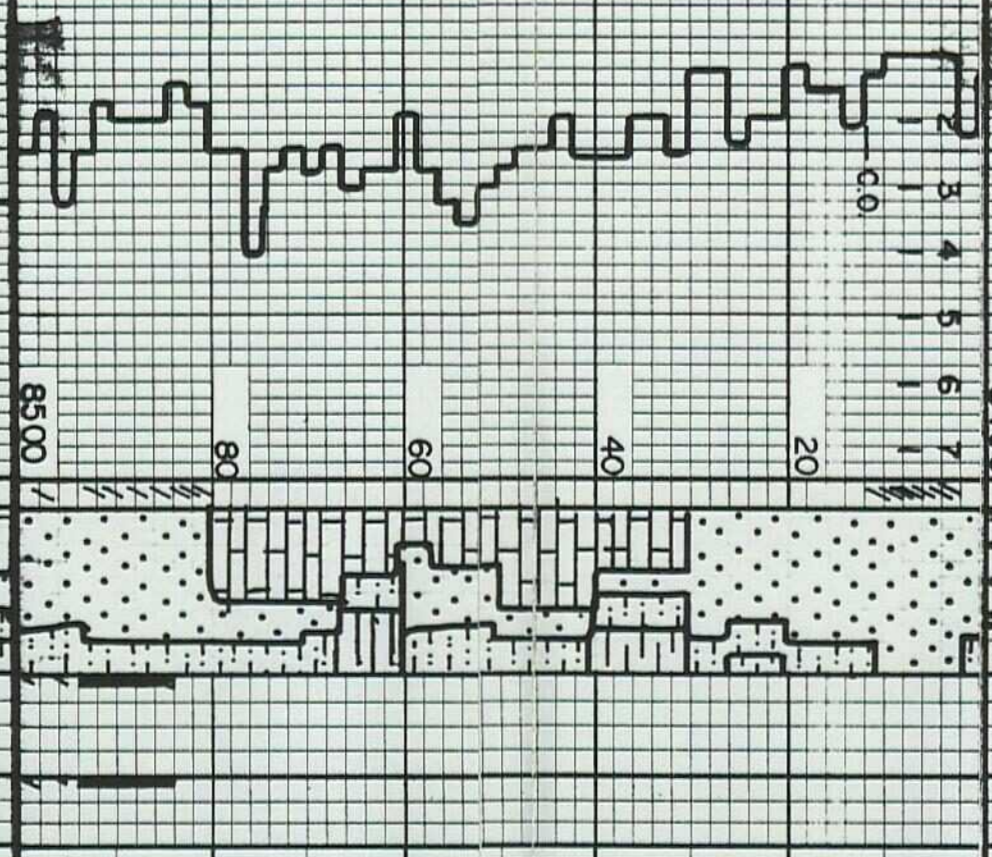
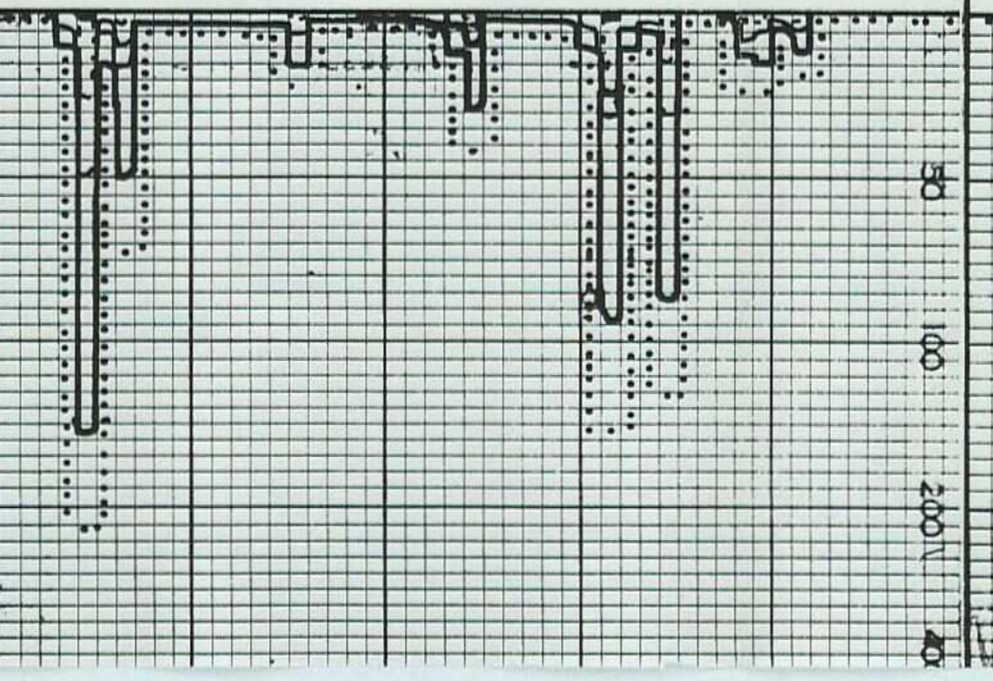
SS: lt gy clr frstd, vfgn, fgm, con, prly cmtd, sbng, sbnd, mod strd, sily shly, ls inc.



SS: lt gy, lt tn mfg con v/calc cmtd, s/lis incl to lam, ang to sbnd no strd

LS: lt bn, tn, crm dns s/vix sndy ip

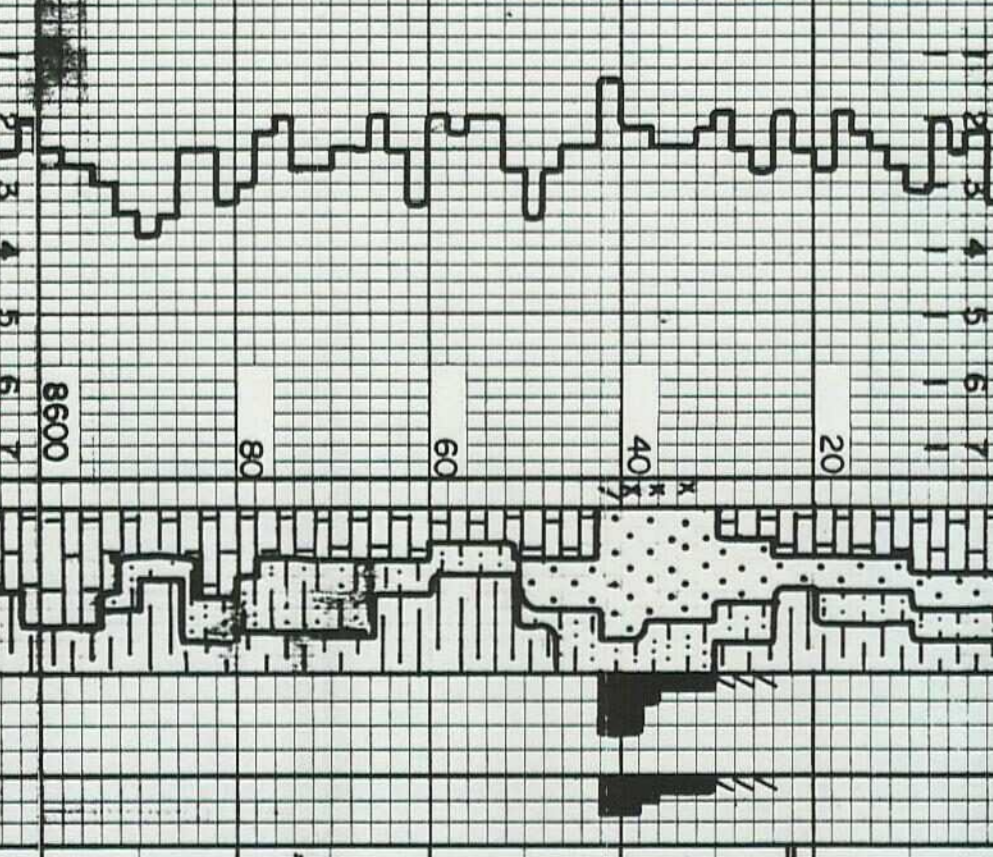
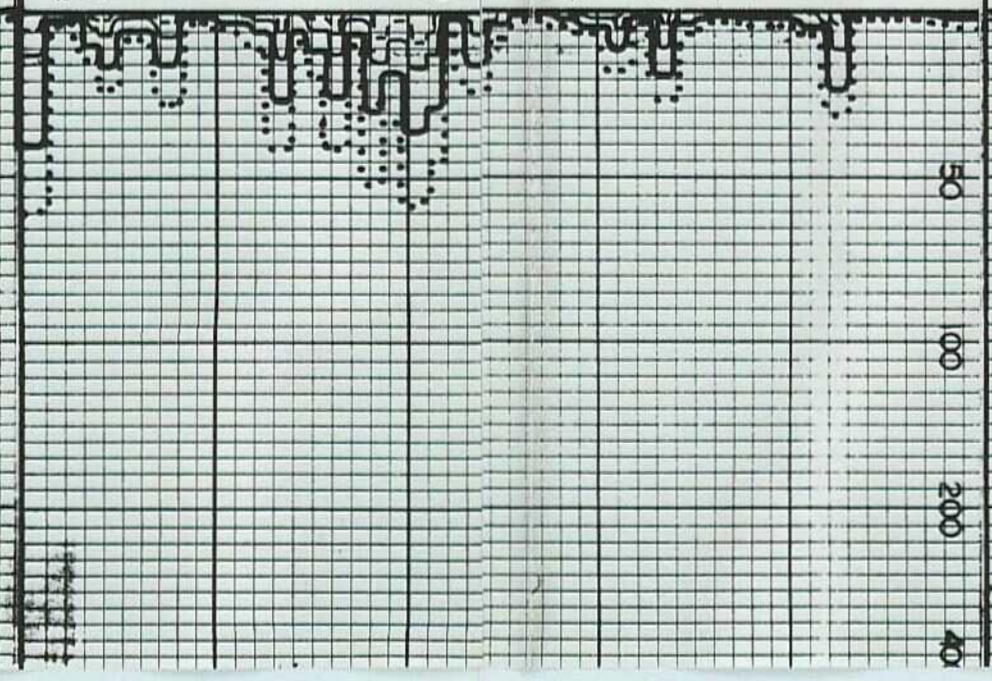
SS: frstd, lt gy v-fg cons w/calc cmtd, s/cly mtrx uncons sbng to sb rnd, mod strd, 10% ylw g fluor w/wk mlky ylw gn c



SS: lt tn, clr, frstd v-fg, uncons rnd to sbng, m wll strd, s/gd intrg, tr seat o str no fluor or ct

LS: lt tn, crm, lt bn dns, sily, v/sndy ip, s/lx, trc foss

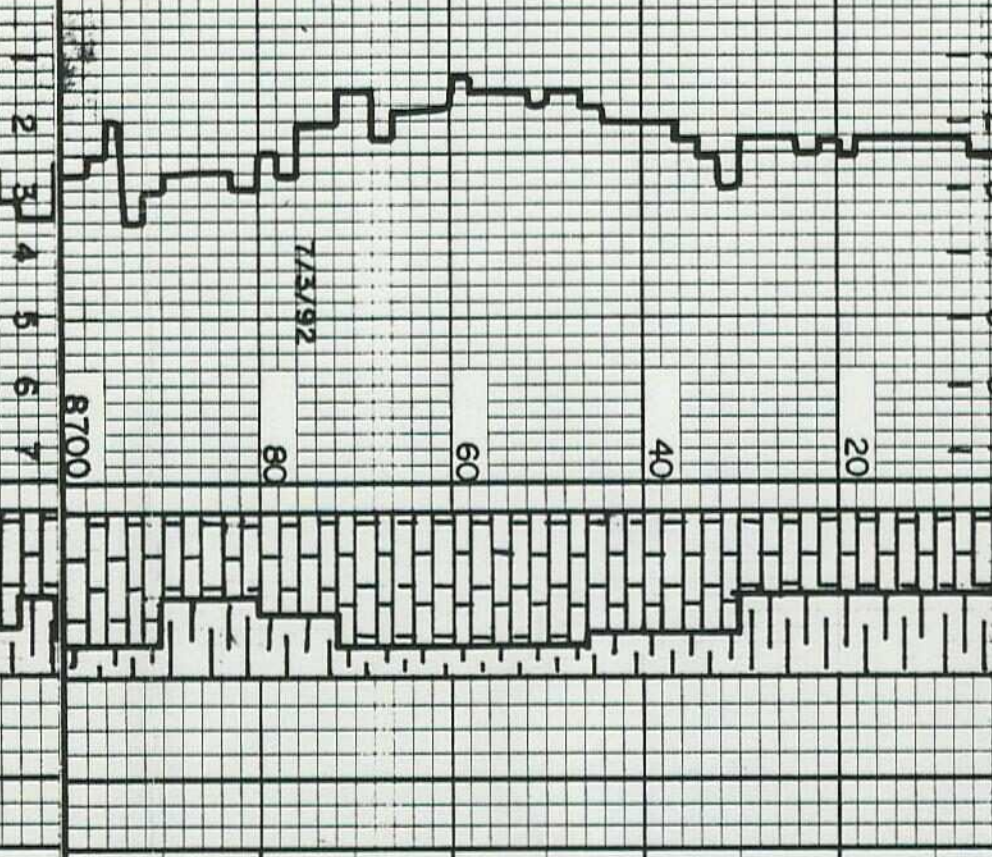
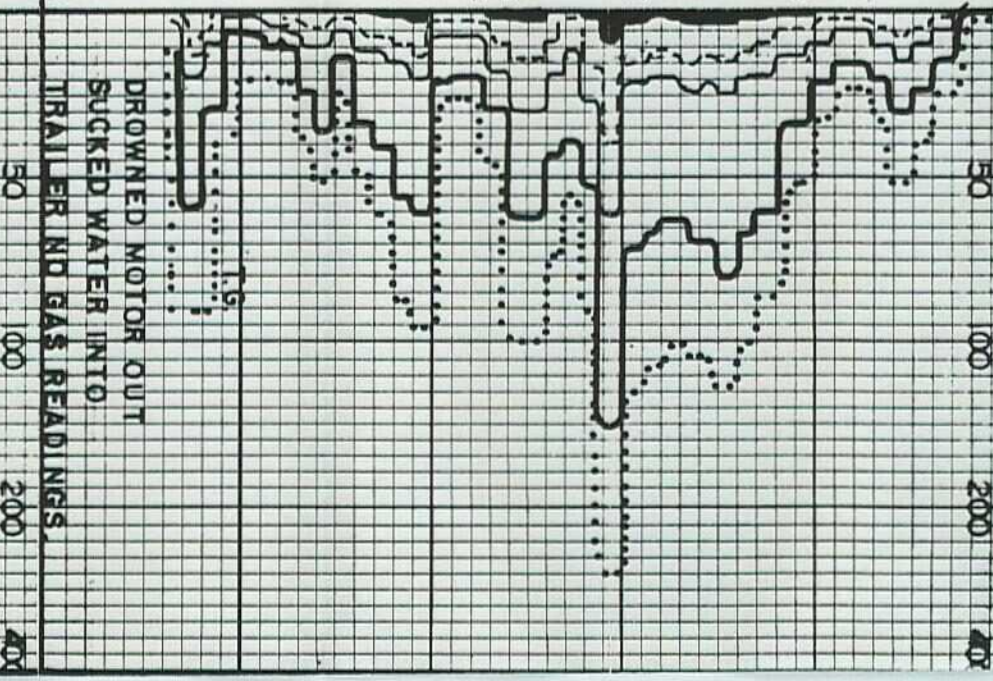
SS: lt gy frstd, clr, fgm, con, prly cmtd, uncon, shang sbnd sily, shly, ls inc, bent.



SS: lt bn, frstd, f-mfg cons v/calc cmtd, sbng on to rnd mod wll strd, 50% brt gn res rng, s/salt'd strn, s/intrg

LS: bn, lt bn, tn, wh dns frm sily, s/vix v/sndy ip

SH: dk bn, gy frm sft sily carb, v/calc, pyrtc sndy blk



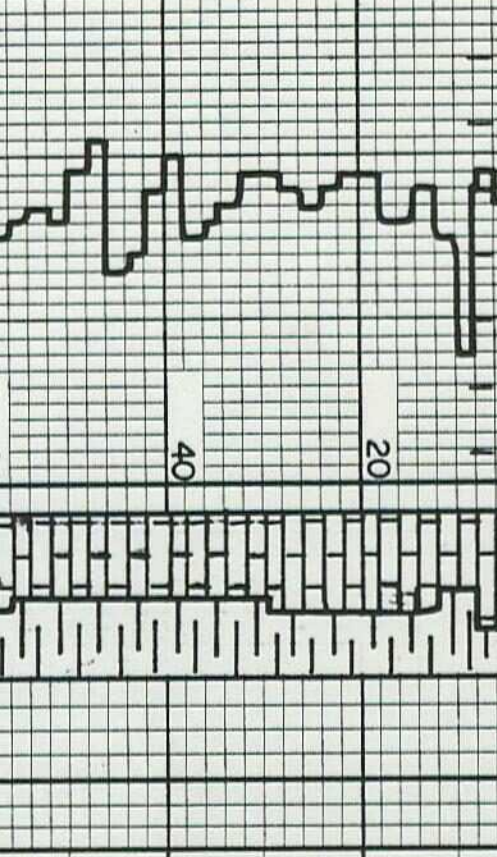
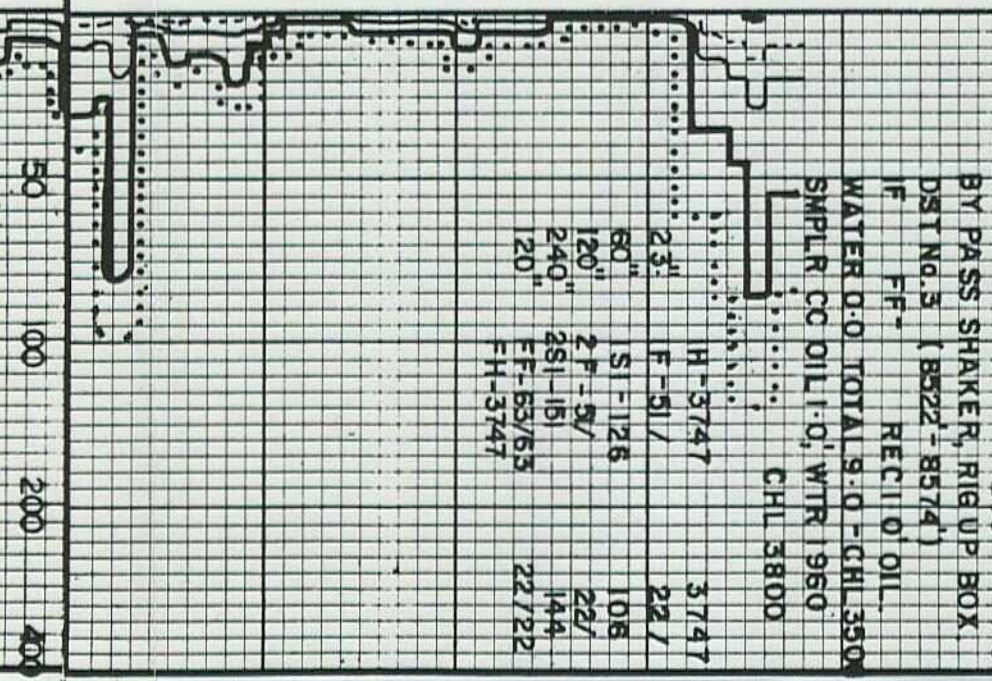
LS: dk bn, dk gy, lt tn micxin, to vfgn, pyrtc shly, sndy, occ bent, molt.

SH: blk, dk gy, hd, pyrc, ethy, ls inc, occ bent tr, blk.

LS: tn off wh dk tn, mic xin, dns, pyrtc, sh inc bent tr...

LS: off wh, dk bn, tn, dk gy, micxin, dns, sly pyrtc, sh inc;

LS: dk gy dk bn, tn, off wh, micxin, dns, pyrtc, sh inc, occ bent.



LS: blk, dk gy, dk bn, tn off wh, micx to dns, v/s shly sily, pyrtc

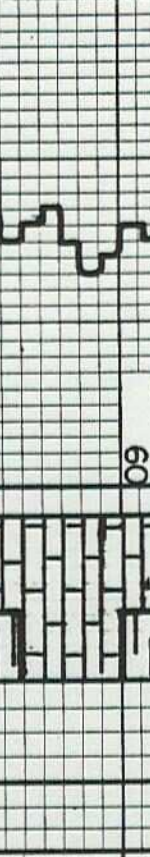
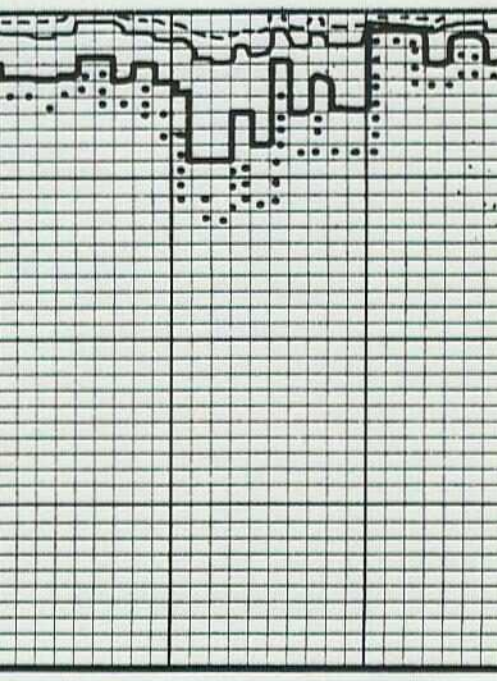
SH: blk, dk gy frm hd pyrc, grty, calc, carb blk

LS: blk, dk gy, dk bn, tn, off wh, micx, pyrc, trc sndy, shly, sily

LS: blk, dk gy, dk bn, tn, off wh, micx, pyrc, trc sndy, shly, sily

LS: lt bn, bn dns molt sily, vfx ip, shly, trc sndy

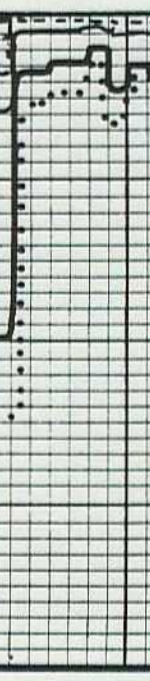
SH: blk, dk gy, gy frm



SS: frstd, lt gy v-fg cons w/calc cmtd, s/cly mtrx uncons sbng to sb rnd, mod strd, 10% ylw g fluor w/wk mlky ylw gn c

LS: bn, lt bn, tn, wh dns frm sily, s/vix v/sndy ip

SH: dk bn, gy frm sft sily carb, v/calc, pyrtc sndy blk



DRILLED MOTOR OUT
 SUCKED WATER INTO
 TRIALER NO GAS READINGS
 BY PASS SHAKER RIG UP BOX
 DST NO. 3 (8822-8574)
 F-F- RECT O OIL
 WATER DO TOTAL 9.0 - CHL 350
 SMPLR CO OIL L-O VTR 1960
 CHL 3800

HT-5747 3747
 F-SI/ 24/
 60 125 108
 120 22/ 22/
 240 281-15 144
 20 22/22
 FH-3747