

# MERIDIAN OIL

May 11, 1993

*Rec. 5/12/93*

Sent Federal Express

Mr. William LeMay  
New Mexico Oil Conservation Division  
Post Office Box 2088  
Santa Fe, New Mexico 87501

Re: Meridian Oil Inc. San Juan 32-9 Unit #4R  
1600'FNL, 710'FEL Section 12, T-31-N, R-10-W  
San Juan County, New Mexico

Dear Mr. LeMay:

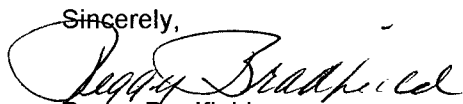
Meridian Oil Inc. is applying for administrative approval of a non-standard location and non-standard proration unit for the above location in the Mesa Verde formation. This application for the referenced location is due to terrain and at the request of the Bureau of Land Management for the access road. Section 12 is a short section; therefore, the east half of the section as dedicated to this well contains 276.36 acres.

The following attachments are for your review:

1. Application for Permit to Drill.
2. Completed C-102 at referenced location.
3. Offset operators/owners plat and affidavit of notification.
4. 7.5 minute topographic map showing the orthodox windows for the east half dedication and enlargement of the map to define topographic features.
5. If the well were directionally drilled to a standard bottom hole location, the economics would be severely burdened due to the incremental directional drilling costs of \$200,000.

A copy of this application is being submitted to all offset owners/ operators by certified mail with a request that they furnish you with a Waiver of Objection, and return one copy to this office.

Sincerely,



Peggy Bradfield  
Regulatory/Compliance Representative

encs.

## WAIVER

Koch Exploration hereby waives objection to Meridian Oil Inc.'s application for a non-standard location and non-standard proration unit for their San Juan 32-9 Unit #4R as proposed.

By: \_\_\_\_\_ Date: \_\_\_\_\_

xc: Koch Exploration, PO Box 2256, Wichita, KS 67201

UNITED STATES  
DEPARTMENT OF THE INTERIOR  
BUREAU OF LAND MANAGEMENT

APPLICATION FOR PERMIT TO DRILL, DEEPEN, OR PLUG BACK

1a.	Type of Work DRILL	5. Lease Number SF-078389A
1b.	Type of Well GAS	6. If Indian, All. or Tribe
2.	Operator <b>MERIDIAN OIL</b>	7. Unit Agreement Name San Juan 32-9 Unit
3.	Address & Phone No. of Operator PO Box 4289, Farmington, NM 87499  (505) 326-9700	8. Farm or Lease Name San Juan 32-9 Unit 9. Well Number 4R
4.	Location of Well 1600' FNL, 710' FEL  Latitude 36° 54' 56", Longitude 107° 49' 45"	10. Field, Pool, Wildcat Blanco Mesa Verde 11. Sec., Twn, Rge, Mer. Sec 12, T-31-N, R-10-W NMPM
14.	Distance in Miles from Nearest Town 4 miels from Cedar Hill, NM	12. County San Juan
		13. State NM
15.	Distance from Proposed Location to Nearest Property or Lease Line 710'	
16.	Acres in Lease	17. Acres Assigned to Well 276.36 E/2
18.	Distance from Proposed Location to Nearest Well, Drlg, Compl, or Applied for on this Lease 300'	
19.	Proposed Depth 6158'	20. Rotary or Cable Tools Rotary
21.	Elevations (DF, FT, GR, Etc.) 6535' GR	22. Approx. Date Work will Start 2nd quarter 1993
23.	Proposed Casing and Cementing Program See Operations Plan attached	
24.	Authorized by: _____ Regional Drilling Engineer	
		Date _____

PERMIT NO. \_\_\_\_\_ APPROVAL DATE \_\_\_\_\_

APPROVED BY \_\_\_\_\_ TITLE \_\_\_\_\_ DATE \_\_\_\_\_

Archaeological Report submitted 4-12-93  
Threatened and Endangered Species Report to be submitted

Submit to Appropriate  
District Office  
State Lease - 4 copies  
Fee Lease - 3 copies

State of New Mexico  
Energy, Minerals and Natural Resources Department

Form C-182  
Revised 1-1-89

OIL CONSERVATION DIVISION

DISTRICT I  
P.O. Box 1980, Hobbs, NM 88240

P.O. Box 2088

Santa Fe, New Mexico 87504-2088

DISTRICT II  
P.O. Drawer DD, Aztec, NM 88210

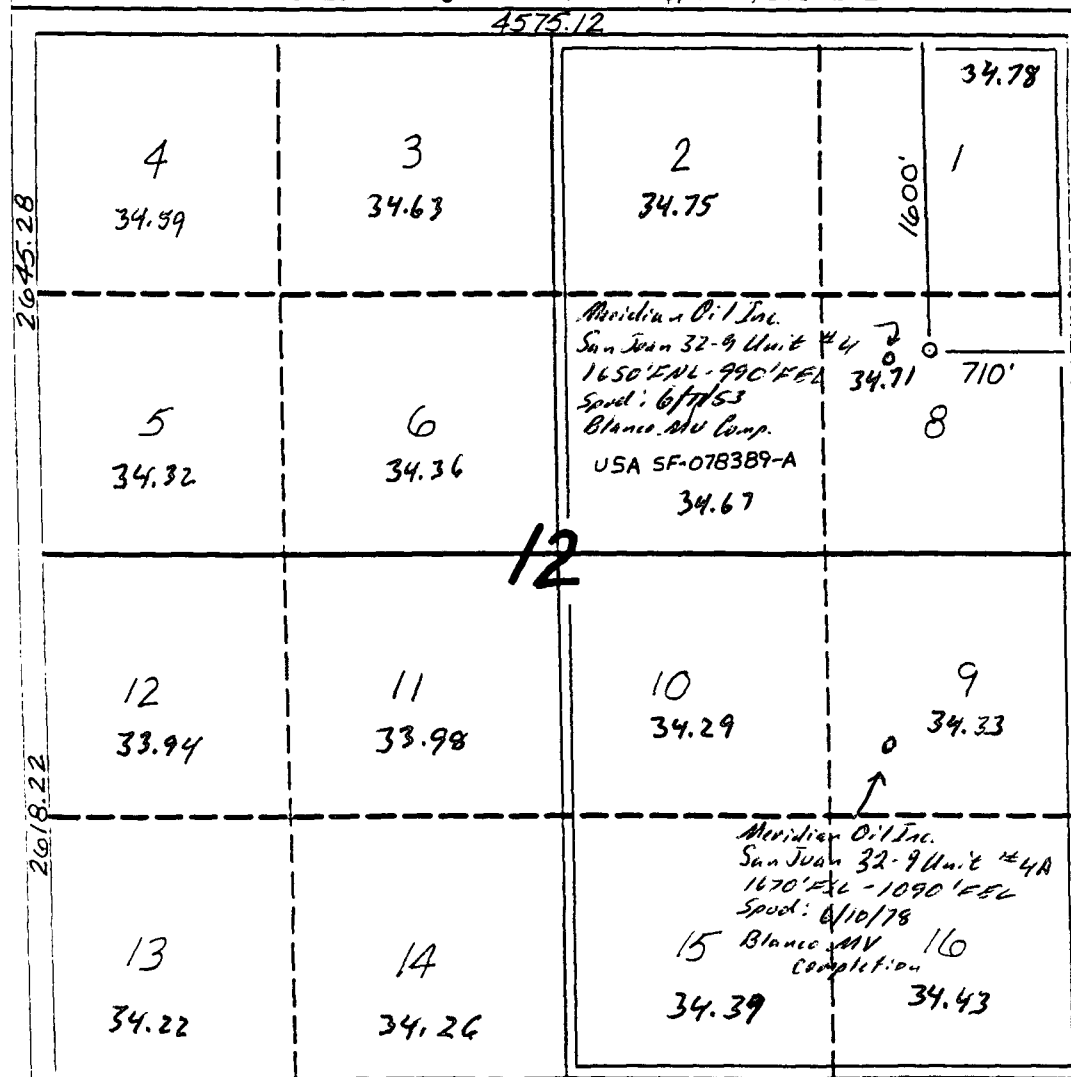
DISTRICT III  
1000 Rio Brazos Rd., Aztec, NM 87410

WELL LOCATION AND ACREAGE DEDICATION PLAT

All Distances must be from the outer boundaries of the section

Operator Meridian Oil Inc.		Lease San Juan 32-9 Unit		Well No. 4R
Unit Letter H	Section 12	Township 31 North	Range 10 West	County San Juan
Actual Footage Location of Well: 1600 feet from the North line and 710 feet from the East line				
Ground level Elev. 6535'	Producing Formation Mesa Verde	Pool Blanco	Dedicated Acreage: 276.36 Acres	

- Outline the acreage dedicated to the subject well by colored pencil or inkline marks on the plat below.
- If more than one lease is dedicated to the well, outline each and identify the ownership thereof (both as to working interest and royalty).
- If more than one lease of different ownership is dedicated to the well, have the interest of all owners been consolidated by communitization, unitization, force-pooling, etc.?  
☒ Yes ☐ No If answer is "yes" type of consolidation unitization  
If answer is "no" list the owners and tract descriptions which have actually been consolidated. (Use reverse side of this form if necessary.)  
No allowable will be assigned to the well until all interests have been consolidated (by communitization, unitization, force-pooling, or otherwise) or until a non-standard unit, eliminating such interest, has been approved by the Division.



OPERATOR CERTIFICATION

I hereby certify that the information contained herein is true and complete to the best of my knowledge and belief.

Signature  
Peggy Bradfield  
Printed Name  
Regulatory Affairs  
Position  
Meridian Oil Inc.  
Company  
Date

SURVEYOR CERTIFICATION

I hereby certify that the well location shown on this plat was plotted from field notes of actual surveys made by me or under my supervision, and that the same is true and correct to the best of my knowledge and belief. 12-11-92

Date Surveyed  
Neal C. Edwards  
Signature  
Professional Surveyor  
6857

Commission No.

6857

May 11, 1993

OPERATIONS PLAN

Well Name: San Juan 32-9 Unit #4R  
Location: 1600'FNL, 710'FEL Section 12, T-31-N, R-10-W  
 San Juan County, New Mexico  
 Latitude 36° 54' 56", Longitude 107° 49' 45"  
Formation: Blanco Mesa Verde  
Elevation: 6535'GL

<u>Formation Tops:</u>	<u>Top</u>	<u>Bottom</u>	<u>Contents</u>
Surface	San Jose	1850'	
Ojo Alamo	1850'	1882'	aquifer
Kirtland	1882'	2968'	gas
Fruitland	2968'	3353'	gas
Pictured Cliffs	3353'	3603'	gas
Lewis	3603'	4118'	gas
Intermediate TD	3800'		
Chacra	4118'	4900'	gas
Mesa Verde	4900'		gas
Massive Cliff House	4900'	5268'	gas
Menefee	5268'	5608'	gas
Massive Point Lookout	5608'	5711'	gas
Lower Point Lookout	5711'		gas & oil
Total Depth	6158'		

Logging Program:

Openhole Wireline Logging -  
     Surface to TD : CNL/GR  
     Intermediate TD to Total Depth : DIL/LDT/Temp  
 Mud Logs/Coring/DST -  
     Mud logs - none  
     Coring - none  
     DST - none

Mud Program:

<u>Interval</u>	<u>Type</u>	<u>Weight</u>	<u>Vis.</u>	<u>Fluid Loss</u>
0- 200'	Spud	8.4-8.9	40-50	no control
200-3800'	Weighted	8.4-9.1	30-60	no control
3800-6158'	Gas/Mist	n/a	n/a	n/a

Pit levels will be visually monitored to detect gain or loss of fluid control.

Casing Program:

<u>Hole Size</u>	<u>Depth Interval</u>	<u>Csg. Size</u>	<u>Wt.</u>	<u>Grade</u>
12 1/4"	0' - 200'	9 5/8"	32.3#	H-40
8 3/4"	0' - 3800'	7"	20.0#	K-55
6 1/4"	3650' - 6158'	4 1/2"	10.5#	K-55

Tubing Program:

0' - 6158'      2 3/8"      4.7#      J-55

BOP Specifications, Wellhead and Tests:

**Surface to Intermediate TD -**

11" 2000 psi minimum double gate BOP stack (Reference Figure #1). After nipple-up prior to drilling out surface casing, rams and casing will be tested to 600 psi for 30 minutes.

**Intermediate TD to Total Depth -**

11" 2000 psi minimum double gate BOP stack (Reference Figure #1). After nipple-up prior to drilling out intermediate casing, rams and casing will be tested to 1500 psi for 30 minutes.

**Surface to Total Depth -**

2" nominal, 2000 psi minimum choke manifold (Reference Figure #3).

**Completion Operations -**

6" 3000 psi double gate BOP stack (Reference Figure #2). After nipple-up prior to completion, pipe rams, casing and liner top will be tested to 3000 psi for 15 minutes.

**Wellhead -**

9 5/8" x 7" x 2 3/8" x 3000 psi tree assembly.

**General -**

- Pipe rams will be actuated once each day and blind rams will be actuated once each trip to test proper functioning.
- An upper kelly cock valve with handle available and drill string valves to fit each drill string will be available on the rig floors at all times.
- A BOP pit level drill will be conducted weekly for each drilling crew.
- All of the BOP tests and drills will be recorded in the daily drilling reports.
- Blind and pipe rams will be equipped with extension hand wheels.

**Cementing:**

9 5/8" surface casing - cement with 180 sx Class "B" cement with 1/4# flocele/sx and 3% calcium chloride (212 cu.ft. of slurry, 200% excess to circulate to surface). WOC 12 hrs. Test casing to 600 psi for 30 minutes.

Saw tooth guide shoe on bottom. Bowspring centralizers will be run in accordance with Onshore Order #2.

**7" intermediate casing -**

Lead w/579 sx of 65/35 Class "B" poz w/6% gel, 2% calcium chloride, 5# gilsonite/sx and 1/4# flocele/sx. Tail w/100 sx Class "B" w/2% calcium chloride (1143 cu.ft. of slurry, 125% excess to circulate to surface). WOC minimum of 12 hours before drilling out intermediate casing. If cement does not circulate to surface, a temperature log will be run after 8 hours to determine TOC. Test casing to 1500 psi for 30 minutes.

Cement nose guide shoe on bottom with float collar spaced on top of shoe joint. Seven bowspring centralizers spaced every other joint off bottom, with three spaced every fourth joint to the base of the Ojo Alamo at 1882'. Two turbolating centralizers at the base of the Ojo Alamo at 1882'. Bowspring centralizers spaced every fourth joint from the base of the Ojo Alamo to the base of the surface casing.

#### 4 1/2" Production Liner -

Cement to circulate liner top. Lead with 325 sx 50/50 Class "B" Poz with 2% gel, 0.6% fluid loss additive. Tail with 100 sx 50/50 Class "B" Poz with 2% gel, 0.6% fluid loss additive, 6.25#/sx gilsonite and 1/4#/sx cellophane flakes (693 cu.ft., 75% excess to circulate liner top). WOC a minimum of 18 hrs prior to completing.

Cement nose guide shoe on bottom with float collar spaced on top of shoe joint. Bowspring centralizers spaced every other joint off bottom to top of the Mesa Verde or above. The liner hanger will have a rubber packoff.

- If hole conditions permit, an adequate water spacer will be pumped ahead of each cement job to prevent cement/ mud contamination or cement hydration.
- The pipe will be rotated and/or reciprocated, if hole conditions permit.

#### Special Drilling Operations (Gas/Mist Drilling):

The following equipment will be operational while gas/mist drilling:

- An anchored blooie line will be utilized to discharge all cuttings and circulating medium to the blow pit a minimum of 100' from the wellhead.
- The blooie line will be equipped with an automatic igniter or pilot light.
- Compressors will be located a minimum of 100' from the wellhead in the opposite direction from the blooie line.
- Engines will have spark arresters or water cooled exhaust.
- Deduster equipment will be utilized.
- The rotating head will be properly lubricated and maintained.
- A float valve will be utilized above the bit.
- Mud circulating equipment, water, and mud materials will be sufficient to maintain control of the well.

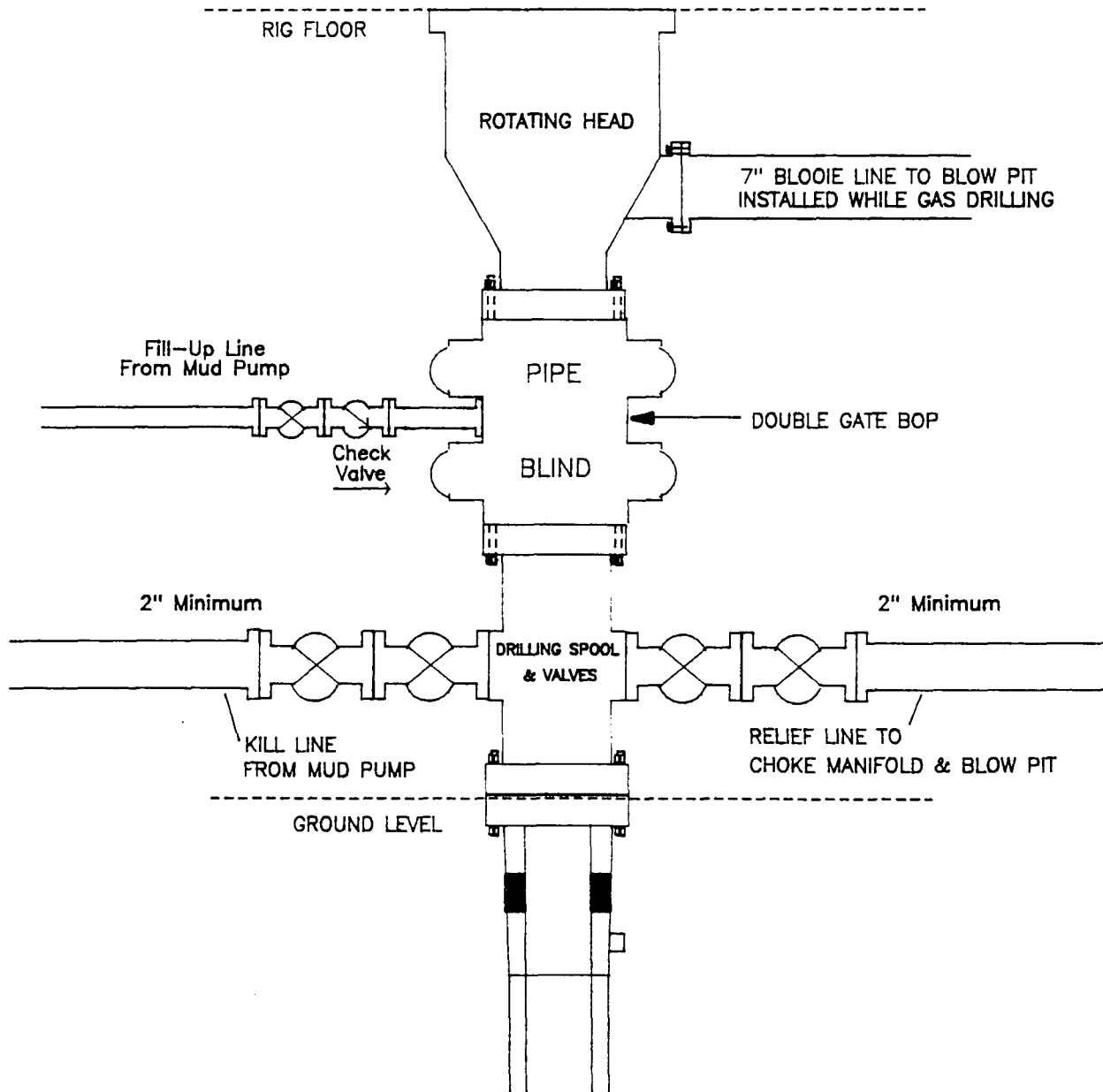
#### Additional Information:

- The Mesa Verde formation will be completed.
- No abnormal temperatures or hazards are anticipated.
- Anticipated pore pressures are as follows:

Fruitland Coal	1400 psi
Pictured Cliffs	600 psi
Mesa Verde	500 psi
- Sufficient LCM will be added to the mud system to maintain well control, if lost circulation is encountered below the top of the Pictured Cliffs.
- The East half of Section 12 is dedicated to this well.
- This gas is dedicated.

# MERIDIAN OIL INC.

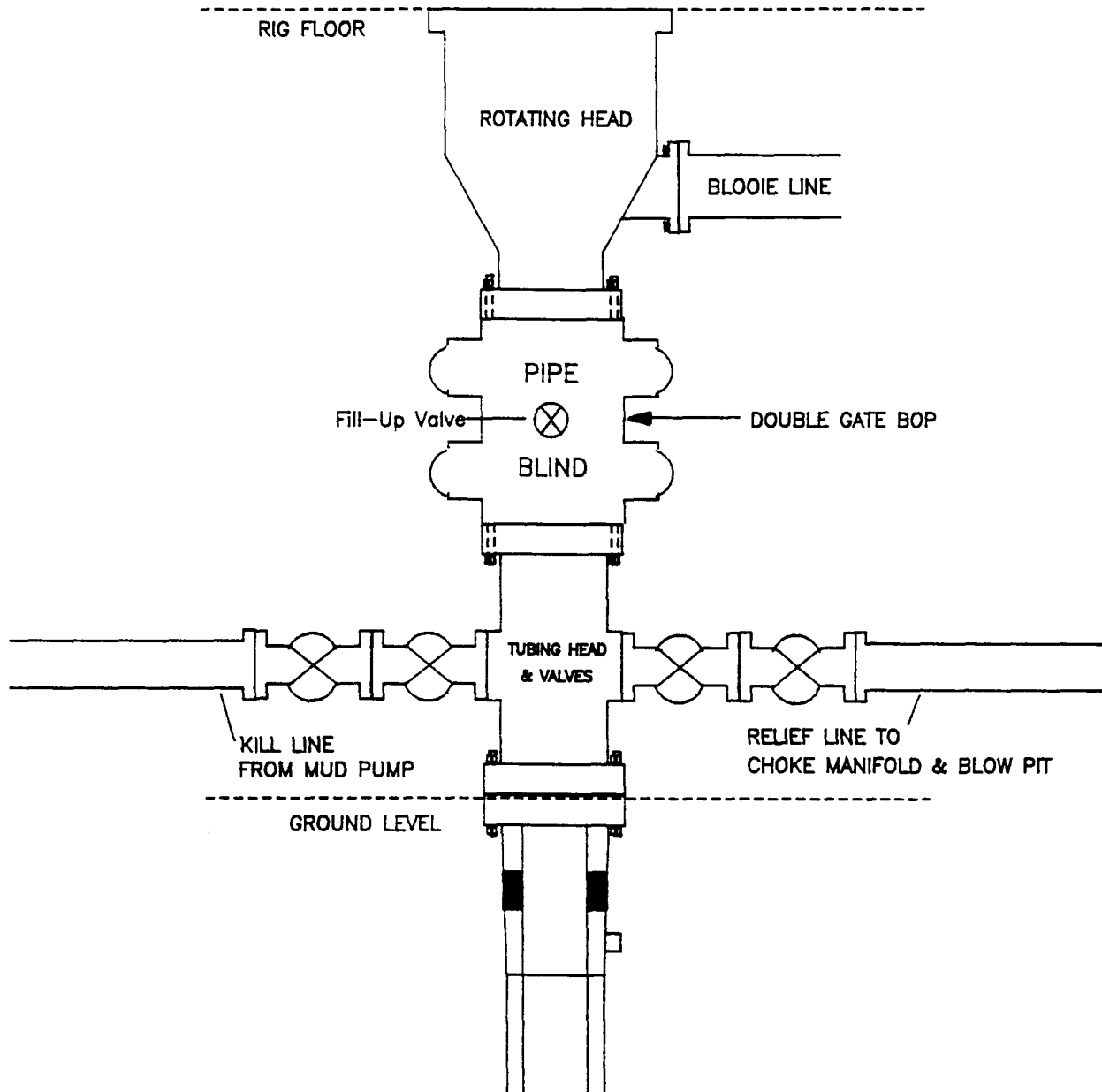
## Mesaverde Well BOP Configuration



Minimum BOP installation for a Mesaverde well from Surface to Total Depth. 11" Bore, 2000psi minimum working pressure double gate BOP to be equipped with blind and pipe rams. A Schaffer Type 50 or equivalent rotating head to be installed on the top of the BOP. All equipment is 2000psi working pressure or greater.

**Figure #1**

**MERIDIAN OIL INC.**  
Mesaverde Well – Completion Rig  
BOP Configuration

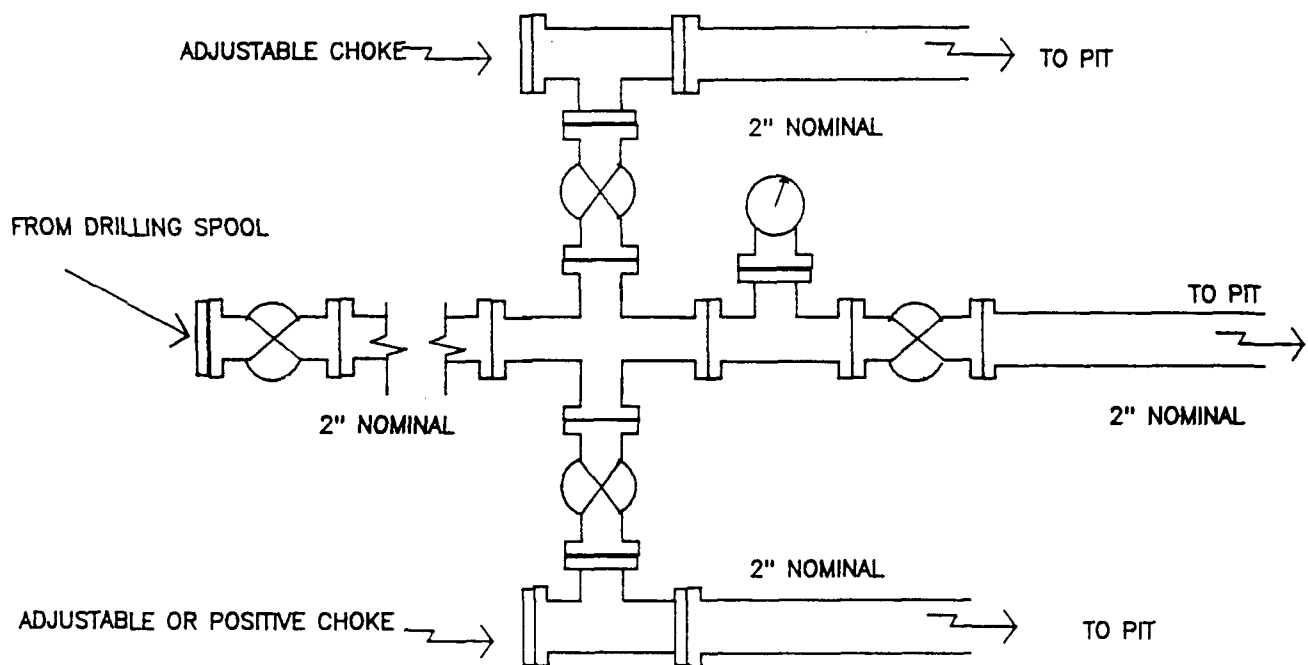


Minimum BOP installation for Completion Operations. 7 1/16" Bore (6" Nominal), 3000psi minimum working pressure double gate BOP to be equipped with blind and pipe rams.

**Figure #2**



**MERIDIAN OIL INC.**  
Mesaverde Well  
Choke Manifold Configuration



Minimum choke manifold installation from surface to Total Depth.  
2" minimum, 2000psi working pressure equipment with two chokes.

**Figure #3**

**MERIDIAN OIL**  
San Juan 32-9 Unit #4R  
Multi-Point Surface Use Plan

1. Existing Roads - Refer to Map No. 1. Existing roads used to access the proposed location will be properly maintained for the duration of the project. Bureau of Land Management right-of-way has been applied for as shown on Map No. 1.
2. Planned Access Road - Refer to Map No. 1. The required new access road is shown on Map No. 1. The gradient, shoulder, crowning and other design elements will meet or exceed those specified by the responsible government agency. The new access road surface will not exceed twenty feet (20') in width. No additional turnarounds or turnouts will be required. Upon completion of the project, the access road will be adequately drained to control soil erosion. Approximately 100' of access road will be constructed. Pipelines are indicated on Map No. 1A.
3. Location of Existing Wells - Refer to Map No. 1A.
4. Location of Existing and/or Proposed Facilities if Well is Productive -
  - a. On the Well Pad - Refer to Plat No. 1, anticipated production facilities plat.
  - b. Off the Well Pad - Anticipated facilities off the well pad will be applied for as required.
5. Location and Type of Water Supply - Water will be hauled by truck for the proposed project and will be obtained from Hart Canyon Water Well located in NW/4 Section 28, T-31-N, R-10-W, New Mexico.
6. Source of Construction Materials - If construction materials are required for the proposed project, such materials will be obtained from a commercial quarry.
7. Methods of Handling Waste Materials - All garbage and trash materials will be removed from the site for proper disposal. A portable toilet will be provided for human waste and serviced in a proper manner. If liquids are left in the reserve pit after completion of the project, the pit will be fenced until the liquids have had adequate time to dry. The location clean-up will not take place until such time as the reserve pit can be properly covered over to prevent run-off from carrying waste materials into the watershed. All reserve pits will be lined with 12 mil bio-degradable plastic liner. All earthen pits will be so constructed as to prevent leakage from occurring; no earthen pit will be located on natural drainage. Generation of hazardous waste is not anticipated. Federal regulations will be adhered to regarding handling and disposal of such waste if so generated.
8. Ancillary Facilities - None anticipated.
9. Wellsite Layout - Refer to the location diagram and to the wellsite cut and fill diagram (Figure No. 4). The blow pit will be constructed with a 2'/160' grade to allow positive drainage to the reserve pit and prevent standing liquids in the blow pit.

10. Plans for Restoration of the Surface - After completion of the proposed project, the location will be cleaned and leveled. The location will be left in such a condition that will enable reseeding operations to be carried out. Seed mixture as designated by the responsible government agency will be used. The reseeding operations will be performed during the time period set forth by the responsible government agency. The permanent location facilities will be painted as designated by the responsible government agency.
11. Surface Ownership - Bureau of Land Management.
12. Other Information - Environmental stipulations as outlined by the responsible government agency will be adhered to. Refer to the archaeological report for a description of the topography, flora, fauna, soil characteristics, dwellings, historical and cultural sites.
13. Operator's Representative and Certification - Meridian Oil Regional Drilling Manager, Post Office Box 4289, Farmington, NM 87499, telephone (505) 326-9700. I hereby certify that I, or persons under my direct supervision, have inspected the proposed drill site and access route; that I am familiar with the conditions which presently exist; that the statements made in this plan, are to the best of my knowledge, true and correct; and that the work associated with the operations proposed herein will be performed by Meridian Oil Inc. and its contractors and subcontractors in conformity with this plan and the terms and conditions under which it is approved.

\_\_\_\_\_  
Regional Drilling Engineer

\_\_\_\_\_  
Date

JWC:pb

**MERIDIAN OIL INC  
SAN JUAN 32-9 UNIT #4R**

**T 31 N, R 10 W**

**100' New Construction**

**T 31 N, R 10 W**

Section 12:	SENE	1000'
	NESE	500'

**T 31 N, R 09 W**

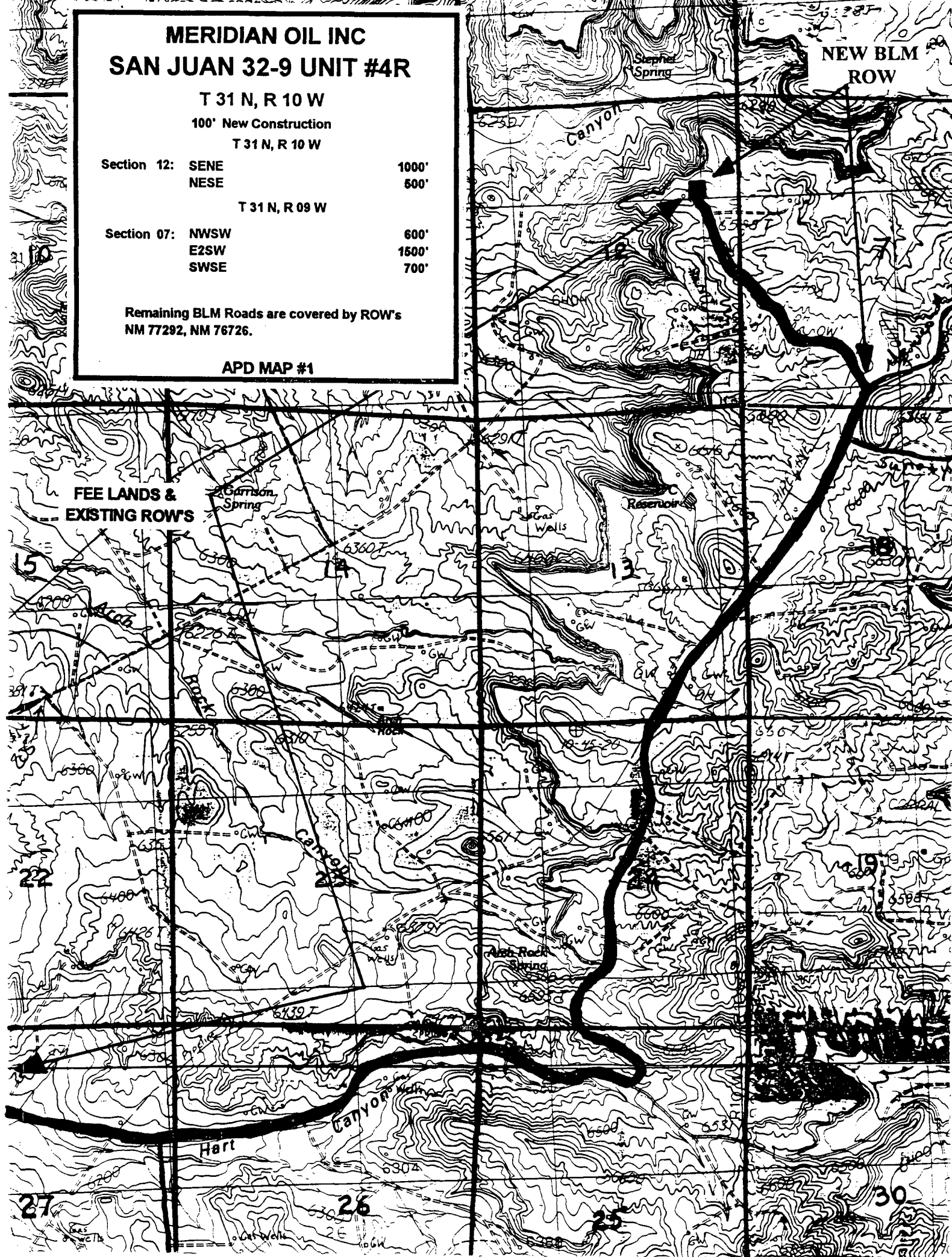
Section 07:	NWSW	600'
	E2SW	1500'
	SWSE	700'

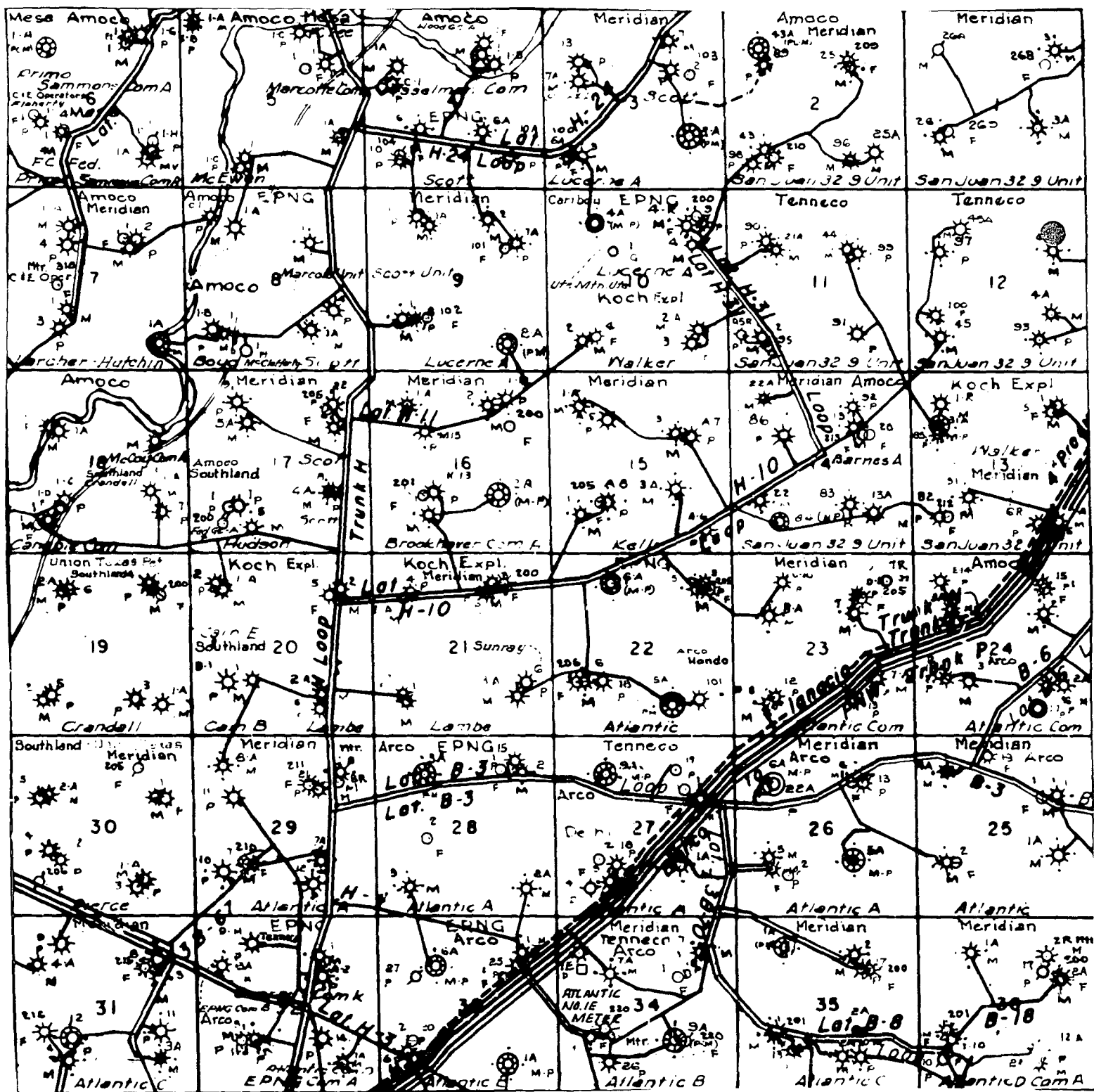
Remaining BLM Roads are covered by ROW's  
NM 77292, NM 76726.

**APD MAP #1**

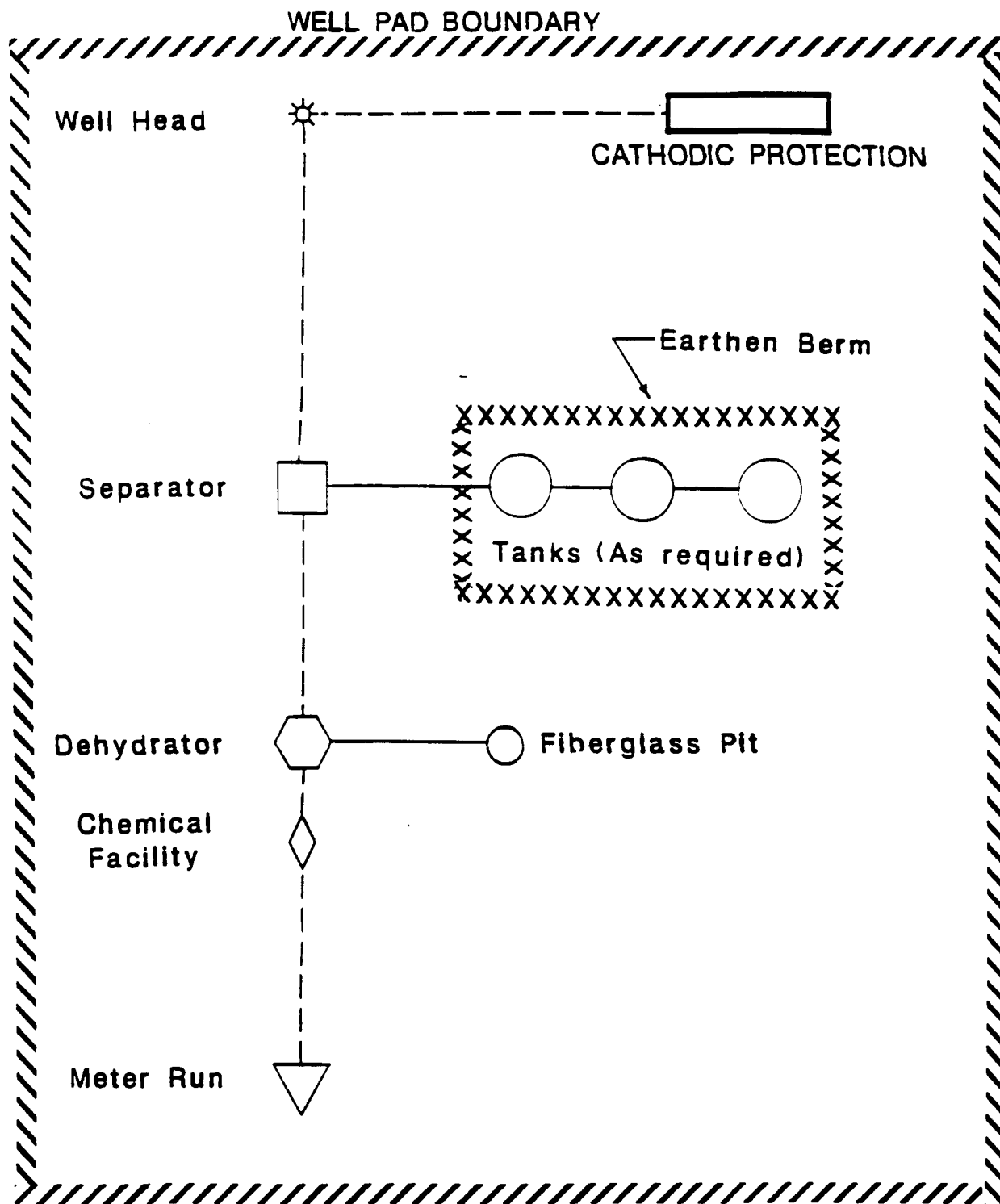
**FEE LANDS &  
EXISTING ROW'S**

**NEW BLM  
ROW**





MERIDIAN OIL INC.  
 Pipeline Map  
 T-31-N, R-10-W  
 San Juan County, New Mexico  
 San Juan 32-9 Unit #4R  
 Map #1A



**PLAT #1**

**MERIDIAN OIL**

ANTICIPATED  
PRODUCTION FACILITIES  
FOR A  
MESA VERDE WELL

KFR 2/90

# MERIDIAN OIL

## Plat 5

Name: MOI SAN JUAN 32-9 UNIT #4R  
 Footage: 1600' FNL, 710' FEL  
 Sec 12 T- 31 N.R- 10 W NMPM  
 Co. SAN JUAN St. N.M.  
 Elevation: 6535' Date: 12-11-92

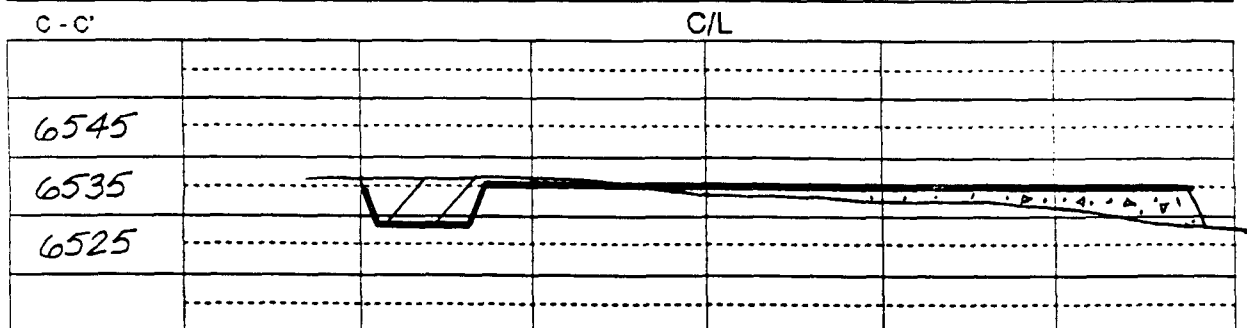
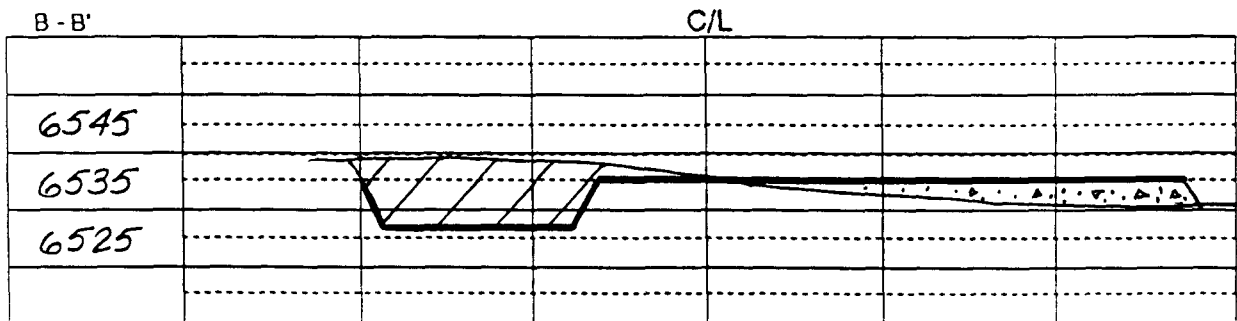
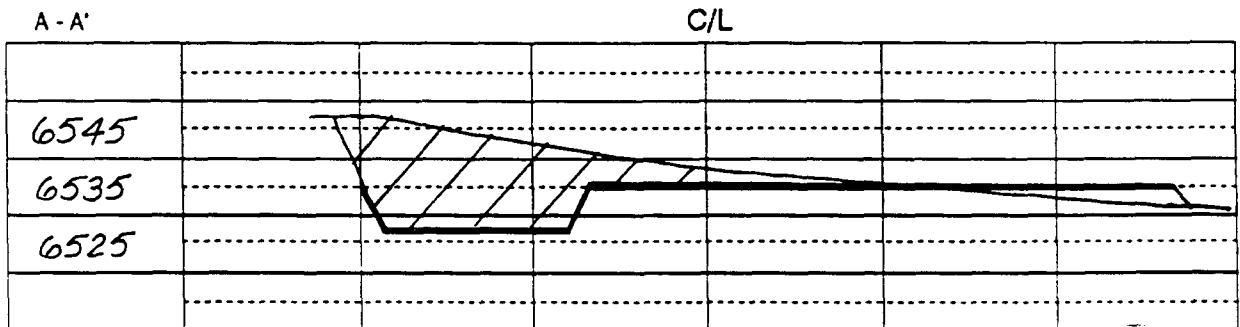
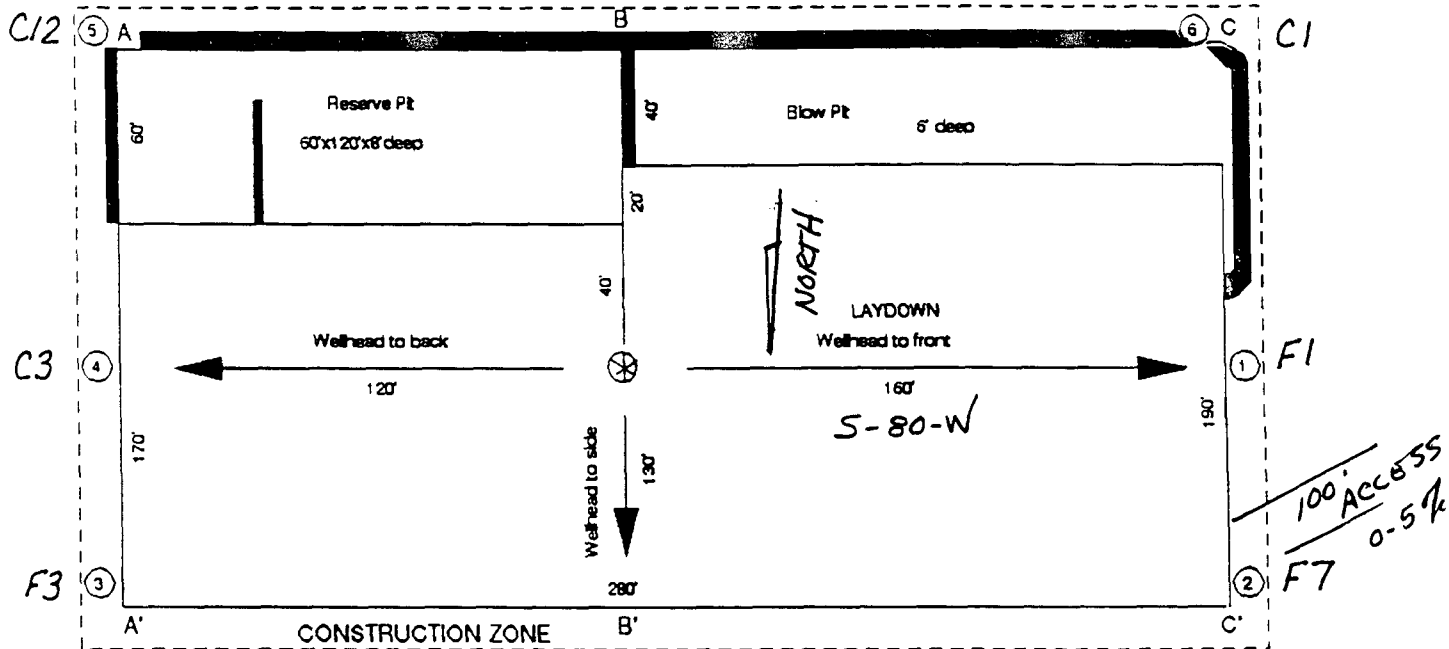


Figure #4

# OIL CONSERVATION DIVISION

**P.O. Box 2088**

**Santa Fe, New Mexico 87504-2088**

## DISTRICT I

P.O. Box 1980, Hobbs, NM 88240

## DISTRICT II

P.O. Drawer DD, Arizona, NM 88210

## DISTRICT II

1000 Rio Grande Rd., Aztec, NM 87410

# WELL LOCATION AND ACREAGE DEDICATION PLAT

**All Distances must be from the outer boundaries of the section**

Operator Meridian Oil Inc.		Lease San Juan 32-9 Unit		Well No. 4R
Unit Letter H	Section 12	Township 31 North	Range 10 West	County San Juan
Actual Footage Location of Well: 1600 feet from the North line and 710 feet from the East line				
Ground level Elev. 6535'	Producing Formation Mesa Verde	Pool Blanco	Dedicated Acreage 276.36 Acres	

1. Outline the acreage dedicated to the subject well by colored pencil or inkline marks on the plot below.
2. If more than one lease is dedicated to the well, outline each and identify the ownership thereof (both as to working interest and royalty).
3. If more than one lease of different ownership is dedicated to the well, have the interest of all owners been consolidated by communitization, unitization, force-pooling, etc.?

☒ Yes ☐ No If answer is "yes" type of consolidation - unitization  
If answer is "no" list the owners and tract descriptions which have actually been consolidated. (Use reverse side of this form if necessary.)

No allowable will be assigned to the well until all interests have been consolidated (by communitization, unitization, forced-pooling, or otherwise) or until a non-standard unit, eliminating such interest, has been approved by the Division.

26°45.28
4575.12

4	3	2	1
5	6	7	8
12	11	10	9
13	14	15	16

26°18.22
4579.08

1600'

710'

USA SF-078389-A

12

### OPERATOR CERTIFICATION

I hereby certify that the information contained herein is true and complete to the best of my knowledge and belief.

*Peggy Bradfield*

Signature

Peggy Bradfield

Printed Name

Regulatory Affairs

Position

Meridian Oil Inc.

Company

5-11-93

Date

### SURVEYOR CERTIFICATION

I hereby certify that the well location shown on this plat was plotted from field notes of actual surveys made by me or under my supervision, and that the same is true and correct to the best of my knowledge and belief.

12-11-92

Date Surveyed

*Edwards*

Neel C. Edwards

Signature

Professional Surveyor

8857

6857



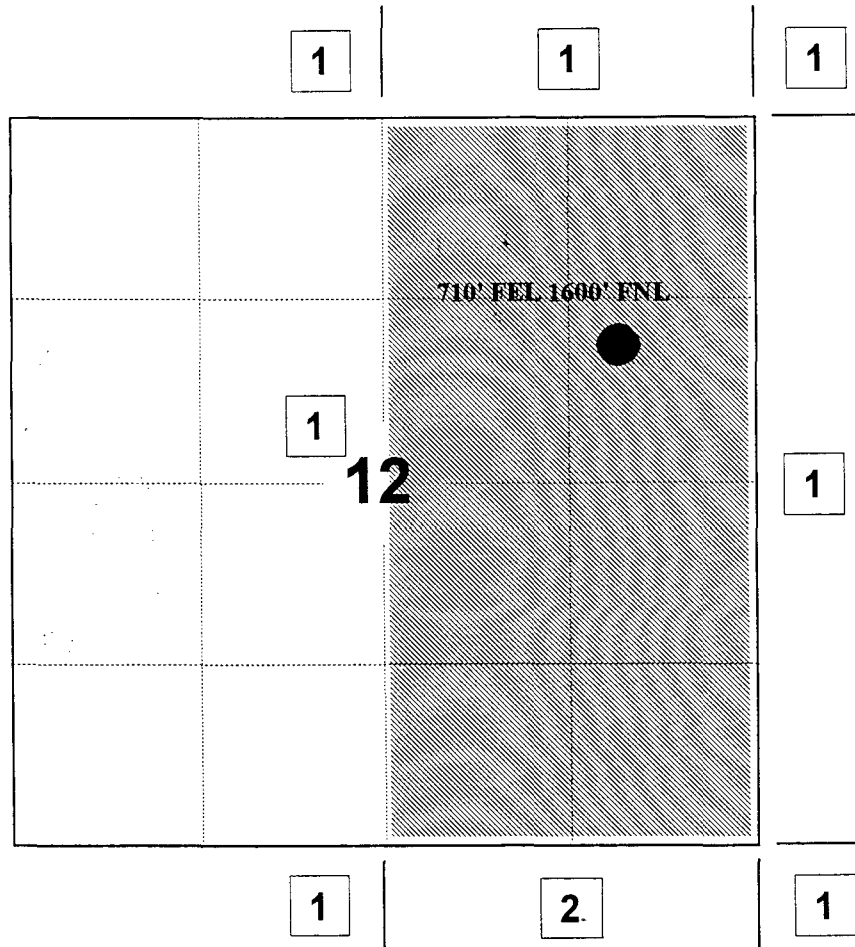
# MERIDIAN OIL INC

## SAN JUAN 32-9 UNIT #4R

OFFSET OPERATOR \ OWNER PLAT

Non-Standard Location

E/2 Section 12, T31N, R10W



1) Meridian Oil Inc, P.O. Box 4289, Farmington, New Mexico 87499-4289

2 ) Koch Exploration, P.O. Box 2256, Wichita, Kansas 67201

---

---

---

---

---

---

---

---

---

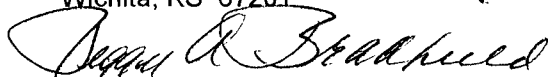
---

# MERIDIAN OIL

Re: Meridian Oil Inc. San Juan 32-9 Unit #4R  
1600'FNL, 710'FEL Section 12, T-31-N, R-10-W  
San Juan County, New Mexico

I hereby certify that the following offset operators/owners have been mailed notification of our application for non-standard location and non-standard proration unit to drill the referenced well.

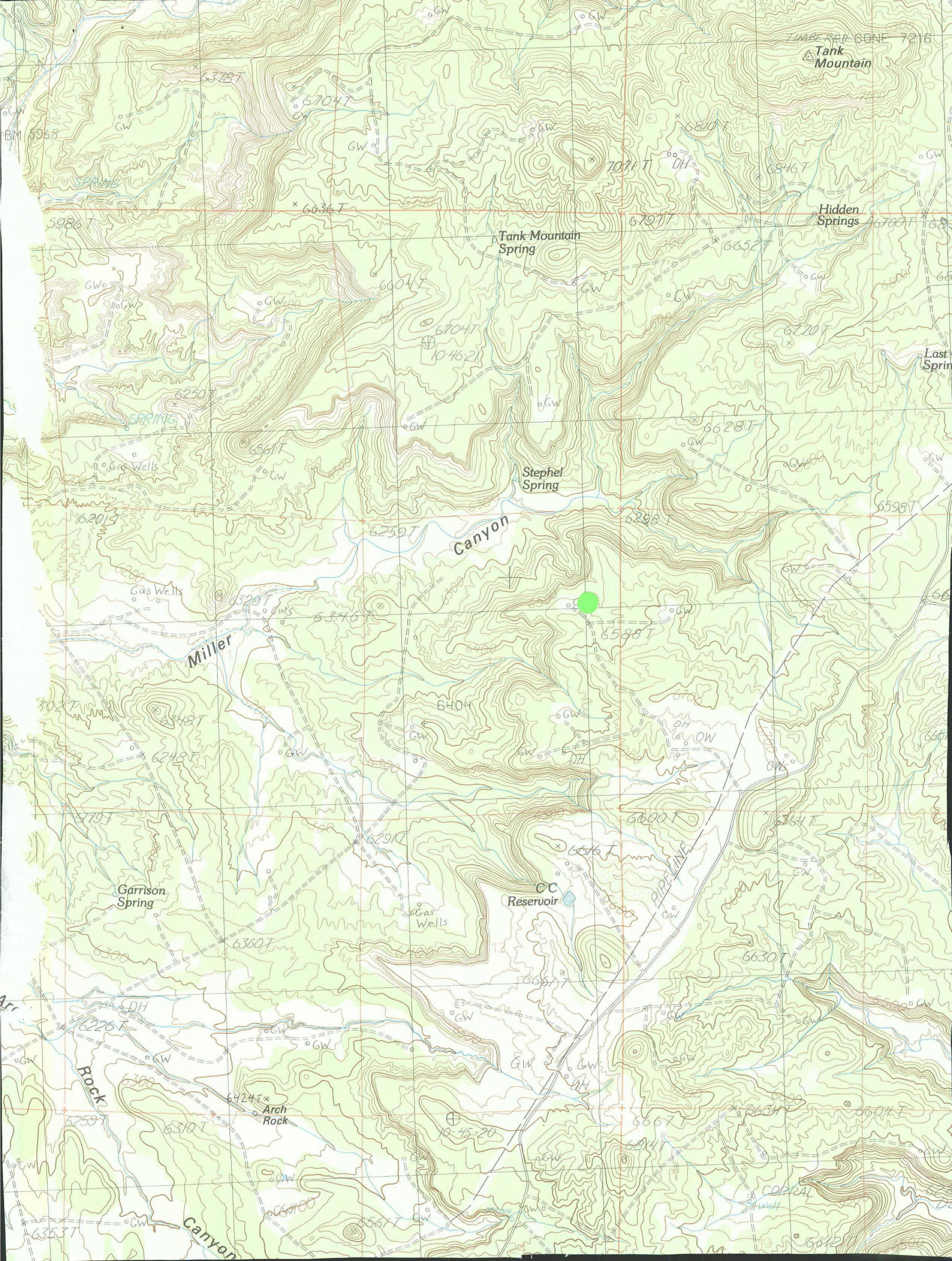
Koch Exploration  
PO Box 2256  
Wichita, KS 67201



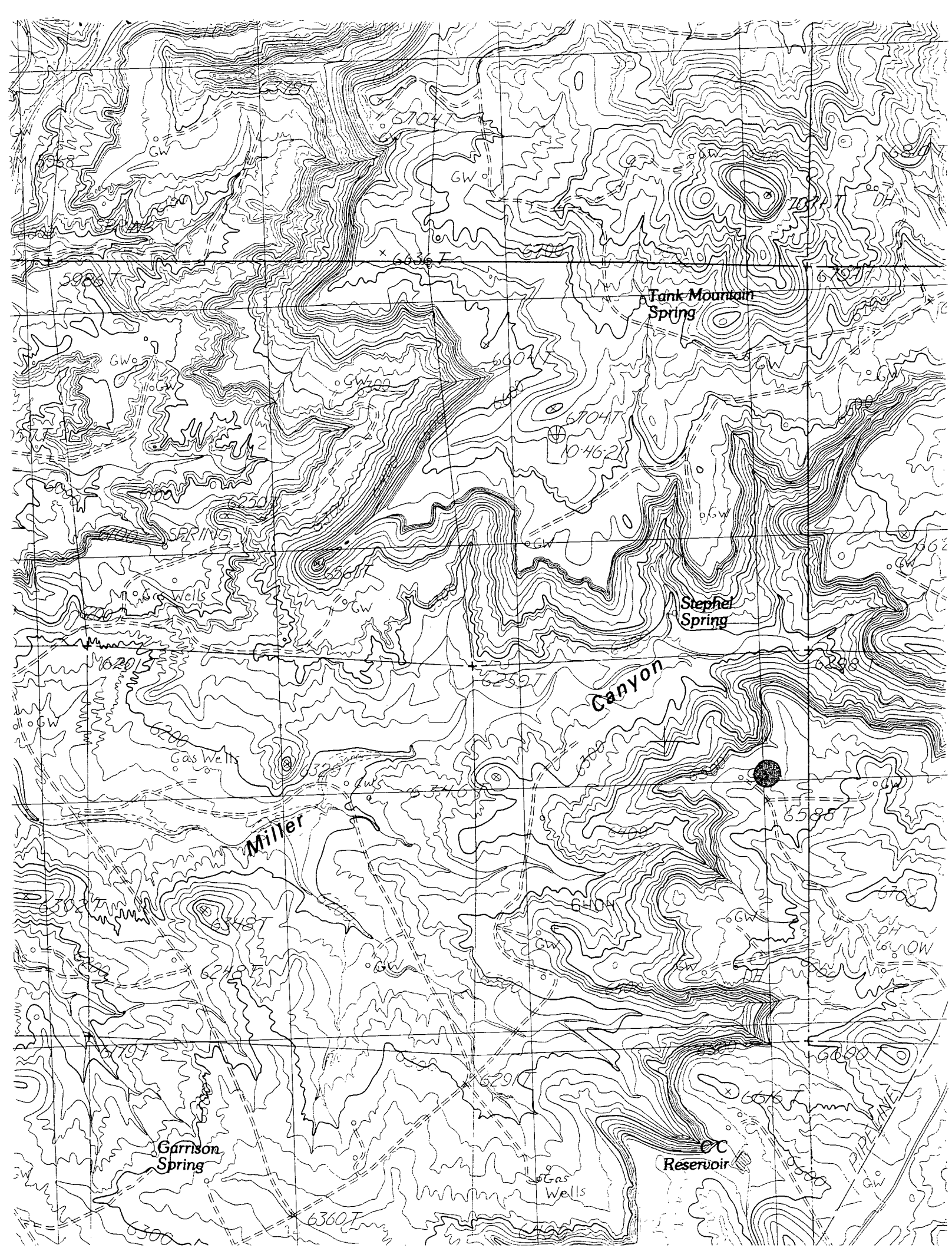
Peggy A. Bradfield  
San Juan County  
State of New Mexico

My commission expires August 17, 1996









**MERIDIAN OIL**

OIL CONSERVATION DIVISION  
RECEIVED

MAY 27 AM 9 10

May 11, 1993

Sent Federal Express

Mr. William LeMay  
New Mexico Oil Conservation Division  
Post Office Box 2088  
Santa Fe, New Mexico 87501

NSL-3243

Re: Meridian Oil Inc. San Juan 32-9 Unit #4R  
1600'FNL, 710'FEL Section 12, T-31-N, R-10-W  
San Juan County, New Mexico

Dear Mr. LeMay:

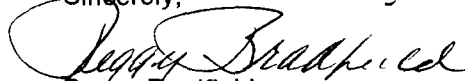
Meridian Oil Inc. is applying for administrative approval of a non-standard location and non-standard proration unit for the above location in the Mesa Verde formation. This application for the referenced location is due to terrain and at the request of the Bureau of Land Management for the access road. Section 12 is a short section; therefore, the east half of the section as dedicated to this well contains 276.36 acres.

The following attachments are for your review:

1. Application for Permit to Drill.
2. Completed C-102 at referenced location.
3. Offset operators/owners plat and affidavit of notification.
4. 7.5 minute topographic map showing the orthodox windows for the east half dedication and enlargement of the map to define topographic features.
5. If the well were directionally drilled to a standard bottom hole location, the economics would be severely burdened due to the incremental directional drilling costs of \$200,000.

A copy of this application is being submitted to all offset owners/ operators by certified mail with a request that they furnish you with a Waiver of Objection, and return one copy to this office.

Sincerely,



Peggy Bradfield  
Regulatory/Compliance Representative

encs.

**WAIVER**

Koch Exploration hereby waives objection to Meridian Oil Inc.'s application for a non-standard location and non-standard proration unit for their San Juan 32-9 Unit #4R as proposed.

By: Ronald J. Miller Date: 5/20/93

xc: Koch Exploration, PO Box 2256, Wichita, KS 67201

10:01 2956922505 5053269563 MAY-26-93 MED 10:01

**MERIDIAN OIL**

Post-It™ brand fax transmittal memo 7671		# of pages > 1
To <i>Michael Stagner</i>	From <i>Peggy</i>	
Co. <i>NMOC</i>	Co. <i>Meridian</i>	
Dept.	Phone #	
Fax # <i>827-5741</i>	Fax #	

May 11, 1993

Sent Federal Express

Mr. William LeMay  
New Mexico Oil Conservation Division  
Post Office Box 2088  
Santa Fe, New Mexico 87501

Re: Meridian Oil Inc. San Juan 32-9 Unit #4R  
1600'FNL, 710'FEL Section 12, T-31-N, R-10-W  
San Juan County, New Mexico

Dear Mr. LeMay:

Meridian Oil Inc. is applying for administrative approval of a non-standard location and non-standard proration unit for the above location in the Mesa Verde formation. This application for the referenced location is due to terrain and at the request of the Bureau of Land Management for the access road. Section 12 is a short section; therefore, the east half of the section as dedicated to this well contains 276.36 acres.

The following attachments are for your review:

1. Application for Permit to Drill.
2. Completed C-102 at referenced location.
3. Offset operators/owners plat and affidavit of notification.
4. 7.5 minute topographic map showing the orthodox windows for the east half dedication and enlargement of the map to define topographic features.
5. If the well were directionally drilled to a standard bottom hole location, the economics would be severely burdened due to the incremental directional drilling costs of \$200,000.

A copy of this application is being submitted to all offset owners/ operators by certified mail with a request that they furnish you with a Waiver of Objection, and return one copy to this office.

Sincerely,

*Peggy Bradfield*  
Peggy Bradfield  
Regulatory/Compliance Representative

encs.

**WAIVER**

Koch Exploration hereby waives objection to Meridian Oil Inc.'s application for a non-standard location and non-standard proration unit for their San Juan 32-9 Unit #4R as proposed.

By: *Donald J. Miller* Date: *5/20/93*

xc: Koch Exploration, PO Box 2256, Wichita, KS 67201



STATE OF NEW MEXICO  
**ENERGY AND MINERALS DEPARTMENT**  
 OIL CONSERVATION DIVISION  
 AZTEC DISTRICT OFFICE

IREY CARROTHERS  
 GOVERNOR

OIL CONSERVATION DIVISION  
 RECEIVED

NEW MEXICO  
 AZTEC, NEW MEXICO 87410  
 (505) 334-0170

93 JUN 2 AM 8 52

Date: 5-28-93

*Attn: Mike Stagner*

Oil Conservation Division  
 P.O. Box 2000  
 Santa Fe, NM 87504-2000

Re: Proposed HC \_\_\_\_\_  
 Proposed DHC \_\_\_\_\_  
 Proposed NSL X \_\_\_\_\_  
 Proposed SWD \_\_\_\_\_  
 Proposed WFX \_\_\_\_\_  
 Proposed PMX \_\_\_\_\_

*NSL-3243*

Gentlemen:

I have examined the application dated 4-13-93  
 for the Mexican Oil Inc. S-J-32-9 Unit #48  
 Operator Lease & Well No.

H-12-31N-10W and my recommendations are as follows:  
 Unit, S-T-R

*Approve*

Yours truly,

*Eduardo Brally*