

OIL CONSERVATION DIVISION
RECEIVED
1993 JUN 4 AM 9 02

June 2, 1993

GOV - STATE AND LOCAL GOVERNMENTS

Unorthodox Locations

Rhodes Yates Unit Well No. 17
W. H. Rhodes Federal "A" Well No. 7
W. H. Rhodes Federal "B" NCT-1
Well Nos. 23, 24, 25, 28, 29, and 30
Rhodes Yates Seven Rivers Field
Lea County, New Mexico

State of New Mexico
Energy and Minerals Department
Oil Conservation Division
P. O. Box 2088
Santa Fe, New Mexico 87501-2088

Attention: Mr. Michael E. Stogner

Gentlemen:

An exception, by administrative approval, to Rule 104 F.I. is requested for the captioned wells. Rhodes Yates Unit Well No. 17 is on State land and the remaining wells are on Federal minerals.

The wells must be drilled in these locations to ensure proper development on 20-acre spacing to recover additional reserves in an established waterflood. These reserves could not be recovered with the current 80-acre, 5-spot pattern.

Texaco is the only "affected" offset operator to the Rhodes Yates Unit Well No. 17, the W. H. Rhodes Federal "A" Well No. 7, and the W. H. Rhodes Federal "B" NCT-1 Well No. 25, and we grant ourselves a waiver to this request. There are no "affected" offset operators to the remaining wells.

Attached are Forms C-102, showing the location for each well and a lease plat showing the existing wells.

Yours very truly,

C. P. Basham / cwh

C. P. Basham
Drilling Operations Manager

CWH:

cc: NMOC, P. O. Box 1980, Hobbs, NM 88240
CC: BLM, P. O. Box 1778, Carlsbad, NM 88220

Submit to Appropriate
District Office
State Lease - 4 copies
Fee Lease - 3 copies

State of New Mexico
Energy, Minerals and Natural Resources Department

Form C-102
Revised 1-1-89

OIL CONSERVATION DIVISION

P.O. Box 2088
Santa Fe, New Mexico 87504-2088

DISTRICT I
P.O. Box 1980, Hobbs, NM 88240

DISTRICT II
P.O. Drawer DD, Artesia, NM 88210

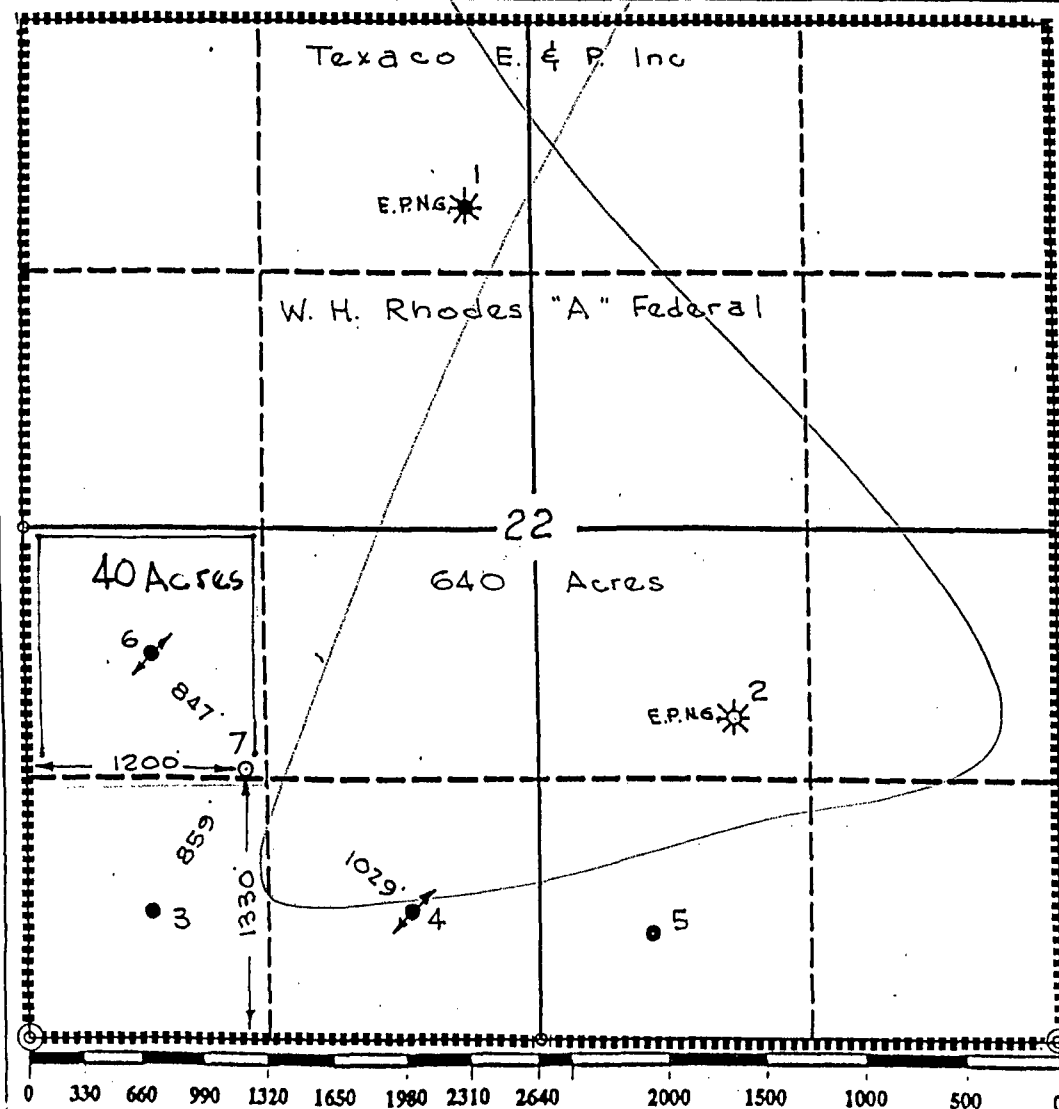
DISTRICT III
1000 Rio Brazos Rd., Aztec, NM 87410

WELL LOCATION AND ACREAGE DEDICATION PLAT

All Distances must be from the outer boundaries of the section

Operator TEXACO EXPLORATION AND PRODUCTION Inc.		Lease W.H. Rhodes "A" FEDERAL		Well No. 7
Unit Letter L	Section 22	Township 26-South	Range 37-East	County Lea
Actual Footage Location of Well: 1330 feet from the South line and 1200 feet from the West line				
Ground level Elev. 2977	Producing Formation Yates/Seven Rivers	Pool Rhodes Yates Seven Rivers	Dedicated Acreage: 40 Acres	

- Outline the acreage dedicated to the subject well by colored pencil or hatchure marks on the plat below.
- If more than one lease is dedicated to the well, outline each and identify the ownership thereof (both as to working interest and royalty).
- If more than one lease of different ownership is dedicated to the well, have the interest of all owners been consolidated by communitization, unitization, force-pooling, etc.?
☐ Yes ☐ No If answer is "yes" type of consolidation _____
If answer is "no" list the owners and tract descriptions which have actually been consolidated. (Use reverse side of this form if necessary).
No allowable will be assigned to the well until all interests have been consolidated (by communitization, unitization, forced-pooling, or otherwise) or until a non-standard unit, eliminating such interest, has been approved by the Division.



OPERATOR CERTIFICATION

I hereby certify that the information contained herein is true and complete to the best of my knowledge and belief.

Signature
Royce D. Mariott
Printed Name
Royce D. Mariott
Position
Division Surveyor
Company
Texaco Expl. & Prod. Inc.
Date
May 24, 1993

SURVEYOR CERTIFICATION

I hereby certify that the well location shown on this plat was plotted from field notes of actual surveys made by me or under my supervision, and that the same is true and correct to the best of my knowledge and belief.

Date Surveyed
May 19, 1993
Signature & Seal of
Professional Surveyor
John S. Piper
Certificate No.
7254 J.S. Piper
Sheet of

OIL CONSERVATION DIVISION

P.O. Box 2088

Santa Fe, New Mexico 87504-2088

DISTRICT I

P.O. Box 1980, Hobbs, NM 88240

DISTRICT II

P.O. Drawer DD, Artesia, NM 88210

DISTRICT III

1000 Rio Brazos Rd., Aztec, NM 87410

WELL LOCATION AND ACREAGE DEDICATION PLAT

All Distances must be from the outer boundaries of the section

Operator TEXACO EXPLORATION AND PRODUCTION Inc.			Lease RHODES YATES UNIT		Well No. 17
Unit Letter D	Section 27	Township 26-South	Range 37-East	County Lea	
Actual Footage Location of Well: 1302 feet from the North line and 46 feet from the West line					
Ground level Elev. 2973	Producing Formation Yates/7 RVRs	Pool Rhodes Yates Seven Rivers		Dedicated Acreage: 40 Acres	

1. Outline the acreage dedicated to the subject well by colored pencil or hatchure marks on the plat below.

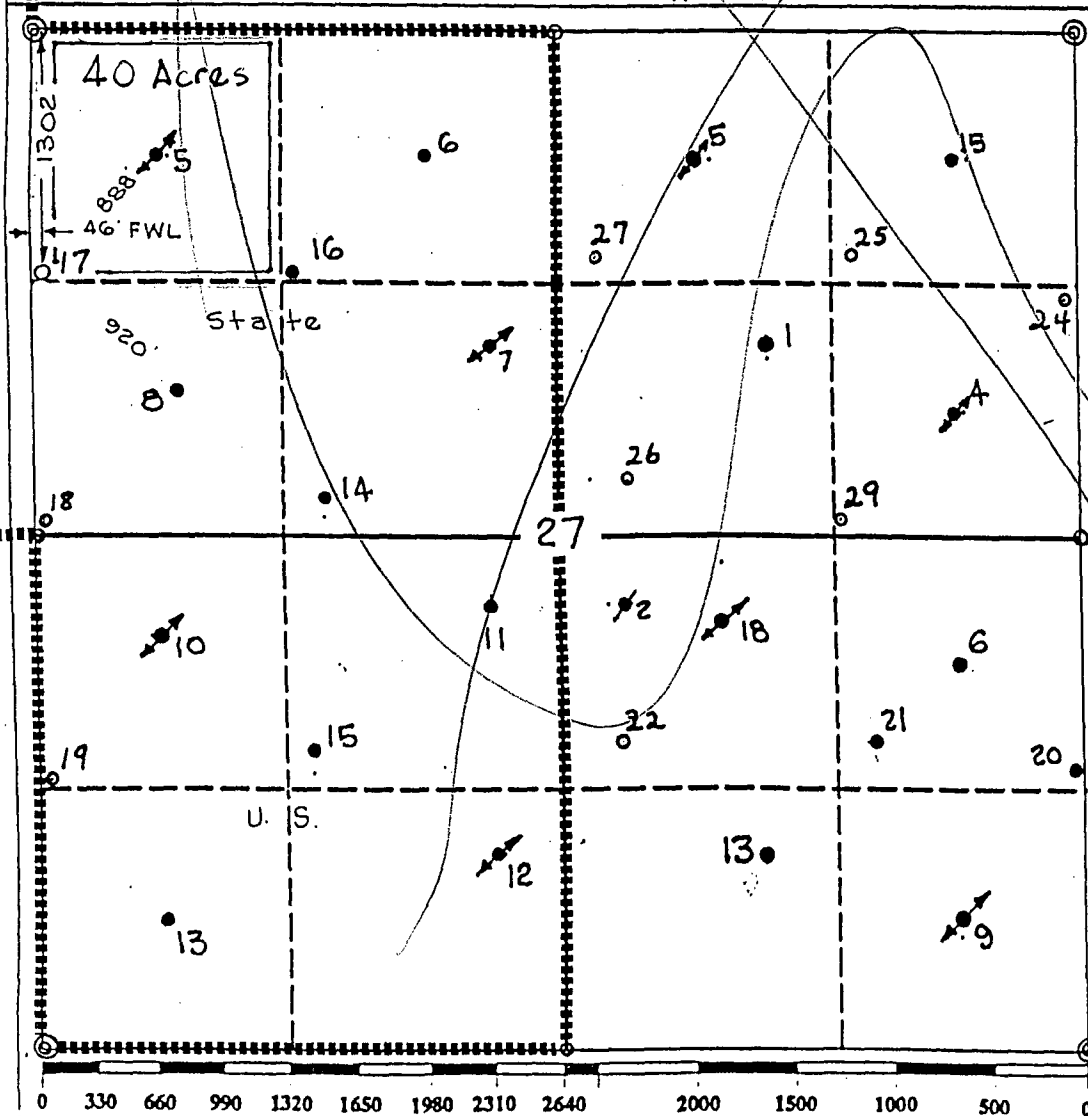
2. If more than one lease is dedicated to the well, outline each and identify the ownership thereof (both as to working interest and royalty).

3. If more than one lease of different ownership is dedicated to the well, have the interest of all owners been consolidated by communization, unitization, force-pooling, etc.?

☒ Yes ☐ No If answer is "yes" type of consolidation Unitization

If answer is "no" list the owners and tract descriptions which have actually been consolidated. (Use reverse side of this form if necessary.)

No allowable will be assigned to the well until all interests have been consolidated (by communization, unitization, forced-pooling, or otherwise) or until a non-standard unit, eliminating such interest, has been approved by the Division.



OPERATOR CERTIFICATION

I hereby certify that the information contained herein is true and complete to the best of my knowledge and belief.

Signature

Royce D. Mariott

Printed Name

Royce D. Mariott

Position

Division Surveyor

Company

Texaco Expl. & Prod. Inc.

Date

May 24, 1993

SURVEYOR CERTIFICATION

I hereby certify that the well location shown on this plat was plotted from field notes of actual surveys made by me or under my supervision, and that the same is true and correct to the best of my knowledge and belief.

Date Surveyed

May 19, 1993

Signature & Seal of Professional Surveyor

John S. Piper

Certificate No.

7254

John S. Piper

Sheet

of

Submit to Appropriate
District Office
State Lease - 4 copies
Fee Lease - 3 copies

State of New Mexico
Energy, Minerals and Natural Resources Department

Form C-102
Revised 1-1-89

OIL CONSERVATION DIVISION

P.O. Box 2088
Santa Fe, New Mexico 87504-2088

DISTRICT I
P.O. Box 1980, Hobbs, NM 88240

DISTRICT II
P.O. Drawer DD, Artesia, NM 88210

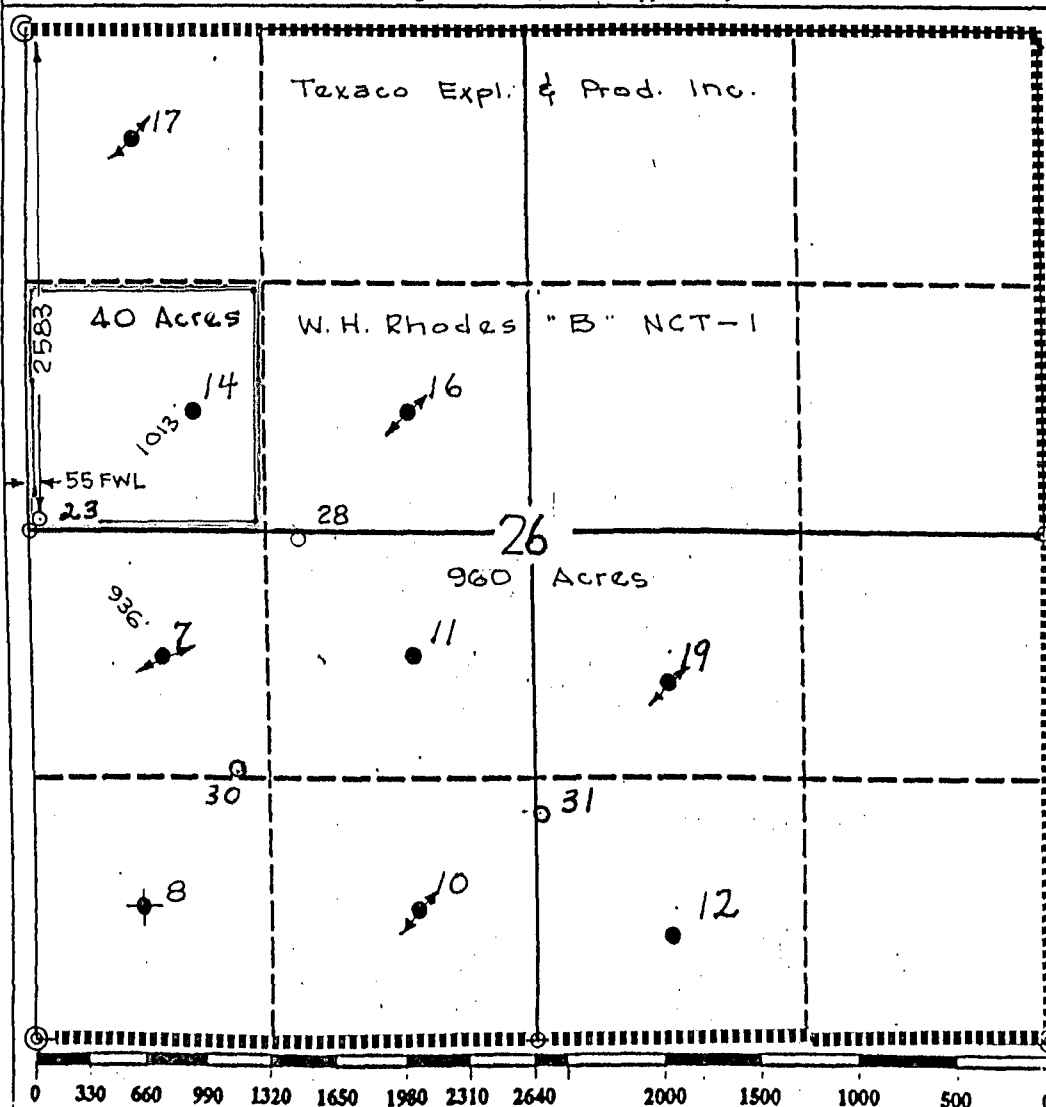
DISTRICT III
1000 Rio Brazos Rd., Aztec, NM 87410

WELL LOCATION AND ACREAGE DEDICATION PLAT

All Distances must be from the outer boundaries of the section

Operator TEXACO EXPLORATION AND PRODUCTION Inc.			Lease W. H. Rhodes Federal "B" NCT-1		Well No. 23
Unit Letter E	Section 26	Township 26-South	Range 37-East	County Lea	
Actual Footage Location of Well: 2583 feet from the North line and 55 feet from the West line					
Ground level Elev. 2984	Producing Formation Yates/7 RVRS		Pool Rhodes Yates Seven Rivers	Dedicated Acreage: 40 Acres	

1. Outline the acreage dedicated to the subject well by colored pencil or hatchure marks on the plat below.
2. If more than one lease is dedicated to the well, outline each and identify the ownership thereof (both as to working interest and royalty).
3. If more than one lease of different ownership is dedicated to the well, have the interest of all owners been consolidated by communitization, unitization, force-pooling, etc.?
☐ Yes ☐ No If answer is "yes" type of consolidation _____
If answer is "no" list the owners and tract descriptions which have actually been consolidated. (Use reverse side of this form if necessary).
No allowable will be assigned to the well until all interests have been consolidated (by communitization, unitization, forced-pooling, or otherwise) or until a non-standard unit, eliminating such interest, has been approved by the Division.



OPERATOR CERTIFICATION

I hereby certify that the information contained herein is true and complete to the best of my knowledge and belief.

Signature
Royce D. Mariott
Printed Name
Royce D. Mariott
Position
Division Surveyor
Company
Texaco Expl. & Prod. Inc.
Date
May 24, 1993

SURVEYOR CERTIFICATION

I hereby certify that the well location shown on this plat was plotted from field notes of actual surveys made by me or under my supervision, and that the same is true and correct to the best of my knowledge and belief.

Date Surveyed
May 17, 1993
Signature & Seal of
Professional Surveyor
John S. Piper
Certificate No.
7254 John S. Piper
Sheet of

OIL CONSERVATION DIVISION

P.O. Box 2088

Santa Fe, New Mexico 87504-2088

DISTRICT I

P.O. Box 1980, Hobbs, NM 88240

DISTRICT II

P.O. Drawer DD, Artesia, NM 88210

DISTRICT III

1000 Rio Brazos Rd., Aztec, NM 87410

WELL LOCATION AND ACREAGE DEDICATION PLAT

All Distances must be from the outer boundaries of the section

Operator TEXACO EXPLORATION AND PRODUCTION Inc.			Lease W.H. Rhodes Federal "B" NCT-1		Well No. 24
Unit Letter H	Section 27	Township 26-South	Range 37-East	County Lea	
Actual Footage Location of Well: 1375 feet from the North line and 95 feet from the East line					
Ground level Elev. 2987	Producing Formation Yates/7 RVRS		Pool Rhodes Yates Seven Rivers		Dedicated Acreage: 40 Acres

1. Outline the acreage dedicated to the subject well by colored pencil or hatchure marks on the plat below.

2. If more than one lease is dedicated to the well, outline each and identify the ownership thereof (both as to working interest and royalty).

3. If more than one lease of different ownership is dedicated to the well, have the interest of all owners been consolidated by communitization, unitization, force-pooling, etc.?

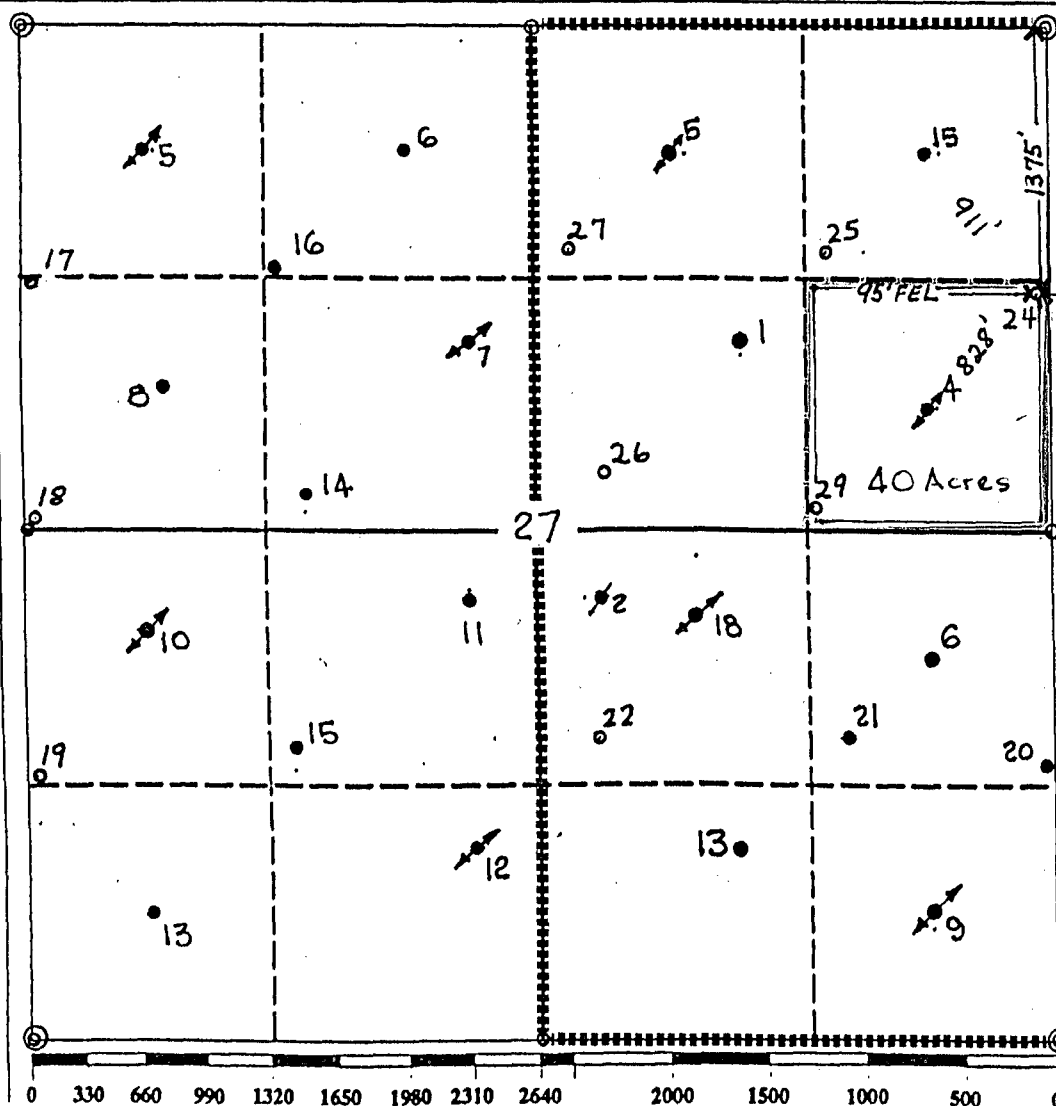
☐ Yes

☐ No

If answer is "yes" type of consolidation

If answer is "no" list the owners and tract descriptions which have actually been consolidated. (Use reverse side of this form if necessary.)

No allowable will be assigned to the well until all interests have been consolidated (by communitization, unitization, forced-pooling, or otherwise) or until a non-standard unit, eliminating such interest, has been approved by the Division.



OPERATOR CERTIFICATION

I hereby certify that the information contained herein is true and complete to the best of my knowledge and belief.

Signature

Royce D. Mariott

Printed Name

Royce D. Mariott

Position

Division Surveyor

Company

Texaco Expl. & Prod. Inc.

Date

May 24, 1993

SURVEYOR CERTIFICATION

I hereby certify that the well location shown on this plat was plotted from field notes of actual surveys made by me or under my supervision, and that the same is true and correct to the best of my knowledge and belief.

Date Surveyed

May 17, 1993

Signature & Seal of
Professional Surveyor

John S. Piper

Certificate No.

7254

John S. Piper

Sheet

of

OIL CONSERVATION DIVISION

DISTRICT I
P.O. Box 1980, Hobbs, NM 88240

P.O. Box 2088
Santa Fe, New Mexico 87504-2088

DISTRICT II
P.O. Drawer DD, Artesia, NM 88210

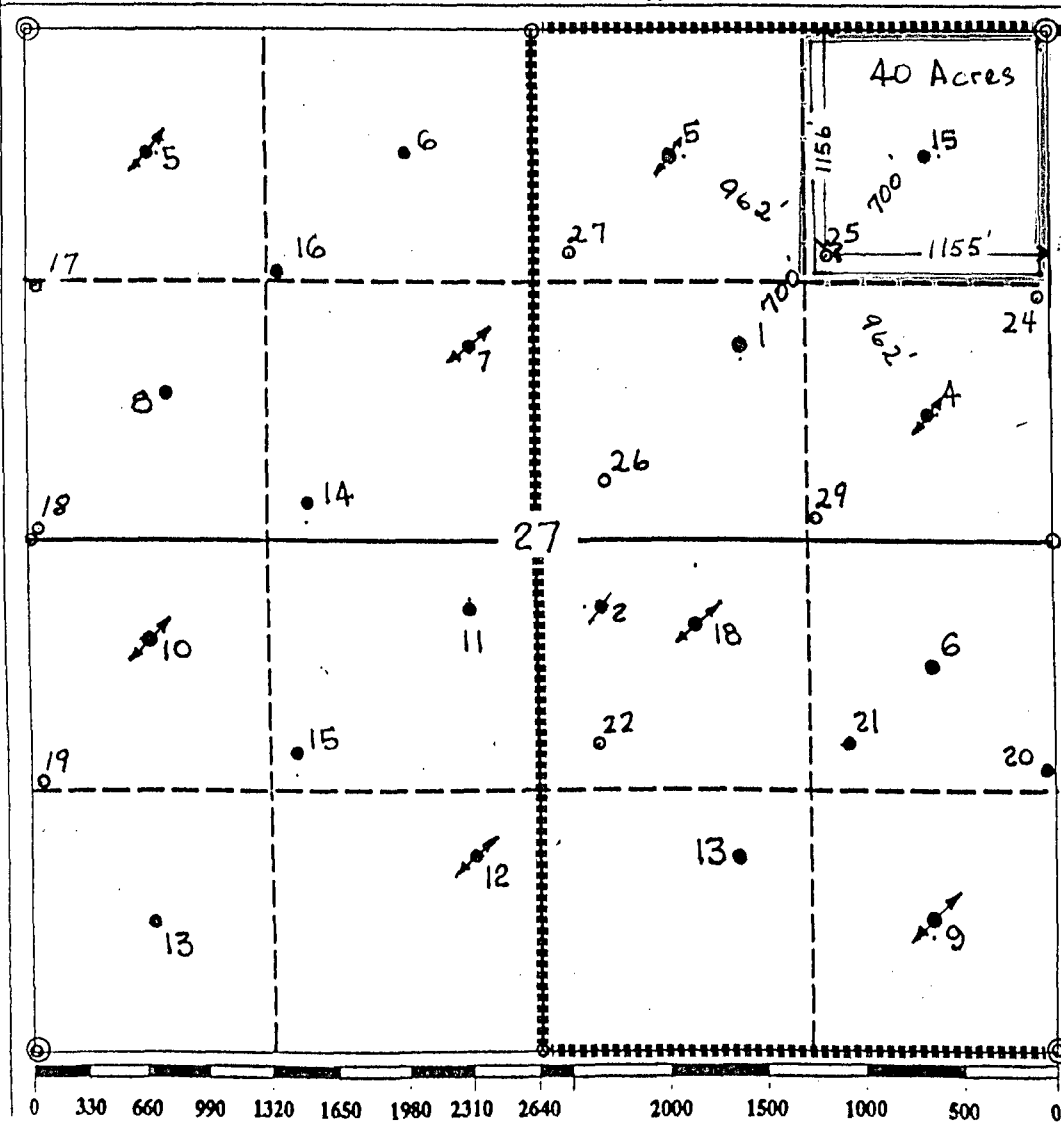
DISTRICT III
1000 Rio Brazos Rd., Aztec, NM 87410

WELL LOCATION AND ACREAGE DEDICATION PLAT

All Distances must be from the outer boundaries of the section

Operator TEXACO EXPLORATION AND PRODUCTION Inc.			Lease W.H. Rhodes Federal "B" NCT-1		Well No. 25
Unit Letter A	Section 27	Township 26-South	Range 37-East		County Lea
Actual Footage Location of Well: 1156 feet from the North line and 1155 feet from the East line					
Ground level Elev. 2981	Producing Formation Yates/7 RVRs		Pool Rhodes Yates Seven Rivers		Dedicated Acreage: 40 Acres

- Outline the acreage dedicated to the subject well by colored pencil or hatchure marks on the plat below.
- If more than one lease is dedicated to the well, outline each and identify the ownership thereof (both as to working interest and royalty).
- If more than one lease of different ownership is dedicated to the well, have the interest of all owners been consolidated by communitization, unitization, force-pooling, etc.?
☐ Yes ☐ No If answer is "yes" type of consolidation _____
If answer is "no" list the owners and tract descriptions which have actually been consolidated. (Use reverse side of this form if necessary).
No allowable will be assigned to the well until all interests have been consolidated (by communitization, unitization, forced-pooling, or otherwise) or until a non-standard unit, eliminating such interest, has been approved by the Division.



OPERATOR CERTIFICATION

I hereby certify that the information contained herein is true and complete to the best of my knowledge and belief.

Signature
Royce D. Mariott
Printed Name
Royce D. Mariott
Position
Division Surveyor
Company
Texaco Expl. & Prod. Inc.
Date
May 24, 1993

SURVEYOR CERTIFICATION

I hereby certify that the well location shown on this plat was plotted from field notes of actual surveys made by me or under my supervision, and that the same is true and correct to the best of my knowledge and belief.

Date Surveyed
May 17, 1993
Signature & Seal of
Professional Surveyor
John S. Piper
Certificate No.
7254 John S. Piper
Sheet of

Submit to Appropriate
District Office
State Lease - 4 copies
Fee Lease - 3 copies

State of New Mexico
Energy, Minerals and Natural Resources Department

Form C-102
Revised 1-1-89

OIL CONSERVATION DIVISION

P.O. Box 2088
Santa Fe, New Mexico 87504-2088

DISTRICT I
P.O. Box 1980, Hobbs, NM 88240

DISTRICT II
P.O. Drawer DD, Artesia, NM 88210

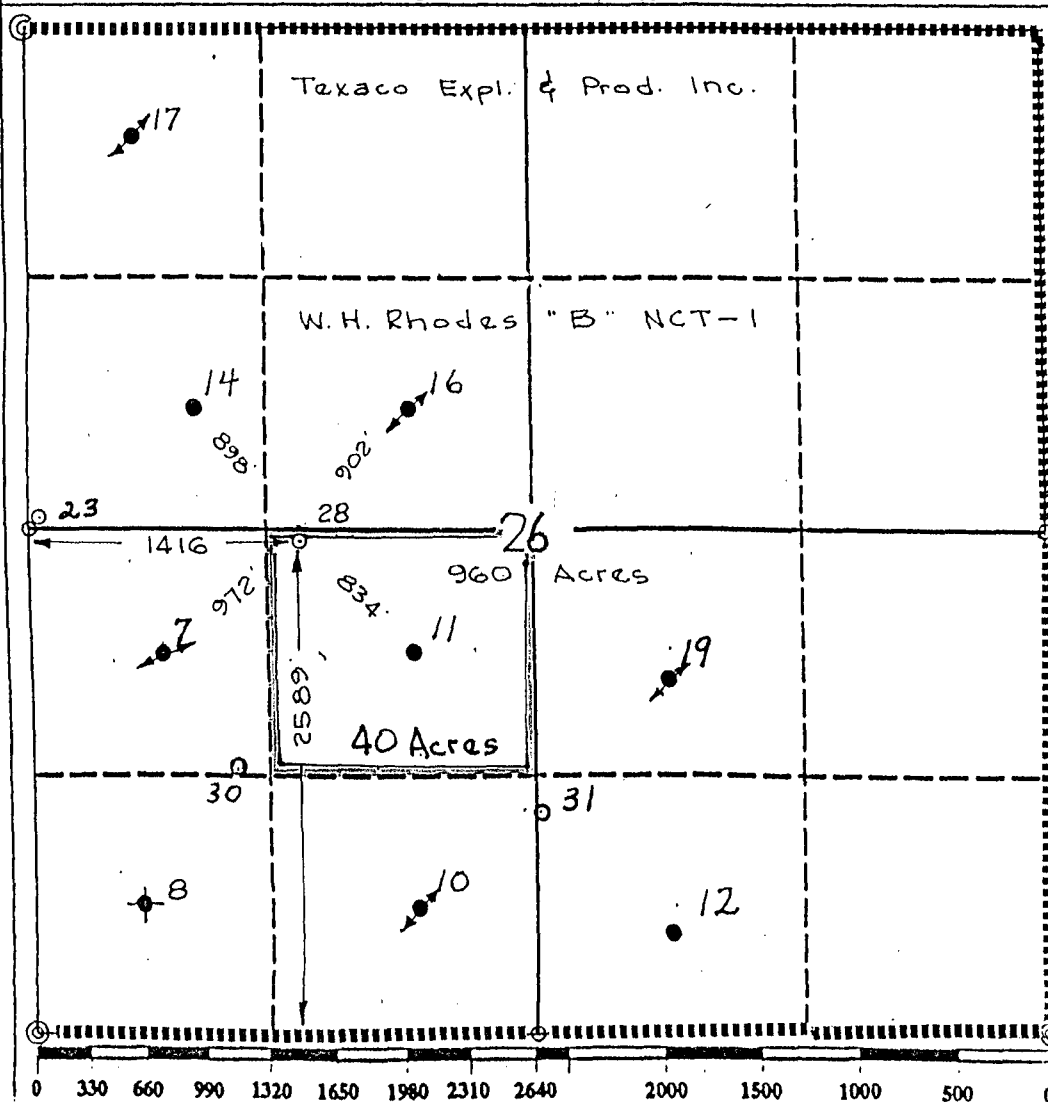
DISTRICT III
1000 Rio Brazos Rd., Aztec, NM 87410

WELL LOCATION AND ACREAGE DEDICATION PLAT

All Distances must be from the outer boundaries of the section

Operator TEXACO EXPLORATION AND PRODUCTION Inc.			Lease W. H. Rhodes Federal "B" NCT-1		Well No. 28
Unit Letter K	Section 26	Township 26-South	Range 37-East	County Lea	
Actual Footage Location of Well: 2589 feet from the South line and 1416 feet from the West line					
Ground level Elev. 2990	Producing Formation Yates/7 RVRS		Pool Rhodes Yates Seven Rivers		Dedicated Acreage: 40 Acres

- Outline the acreage dedicated to the subject well by colored pencil or hatchure marks on the plat below.
- If more than one lease is dedicated to the well, outline each and identify the ownership thereof (both as to working interest and royalty).
- If more than one lease of different ownership is dedicated to the well, have the interest of all owners been consolidated by communization, unitization, force-pooling, etc.?
☐ Yes ☐ No If answer is "yes" type of consolidation _____
If answer is "no" list the owners and tract descriptions which have actually been consolidated. (Use reverse side of this form if necessary.)
No allowable will be assigned to the well until all interests have been consolidated (by communization, unitization, forced-pooling, or otherwise) or until a non-standard unit, eliminating such interest, has been approved by the Division.



OPERATOR CERTIFICATION

I hereby certify that the information contained herein is true and complete to the best of my knowledge and belief.

Signature
Royce D. Mariott
Printed Name
Royce D. Mariott
Position
Division Surveyor
Company
Texaco Expl. & Prod. Inc.
Date
May 24, 1993

SURVEYOR CERTIFICATION

I hereby certify that the well location shown on this plat was plotted from field notes of actual surveys made by me or under my supervision, and that the same is true and correct to the best of my knowledge and belief.

Date Surveyed
May 19, 1993
Signature & Seal of
Professional Surveyor
John S. Piper
Certificate No.
7254 John S. Piper
Sheet of

OIL CONSERVATION DIVISION

P.O. Box 2088

Santa Fe, New Mexico 87504-2088

DISTRICT I

P.O. Box 1980, Hobbs, NM 88240

DISTRICT II

P.O. Drawer DD, Artesia, NM 88210

DISTRICT III

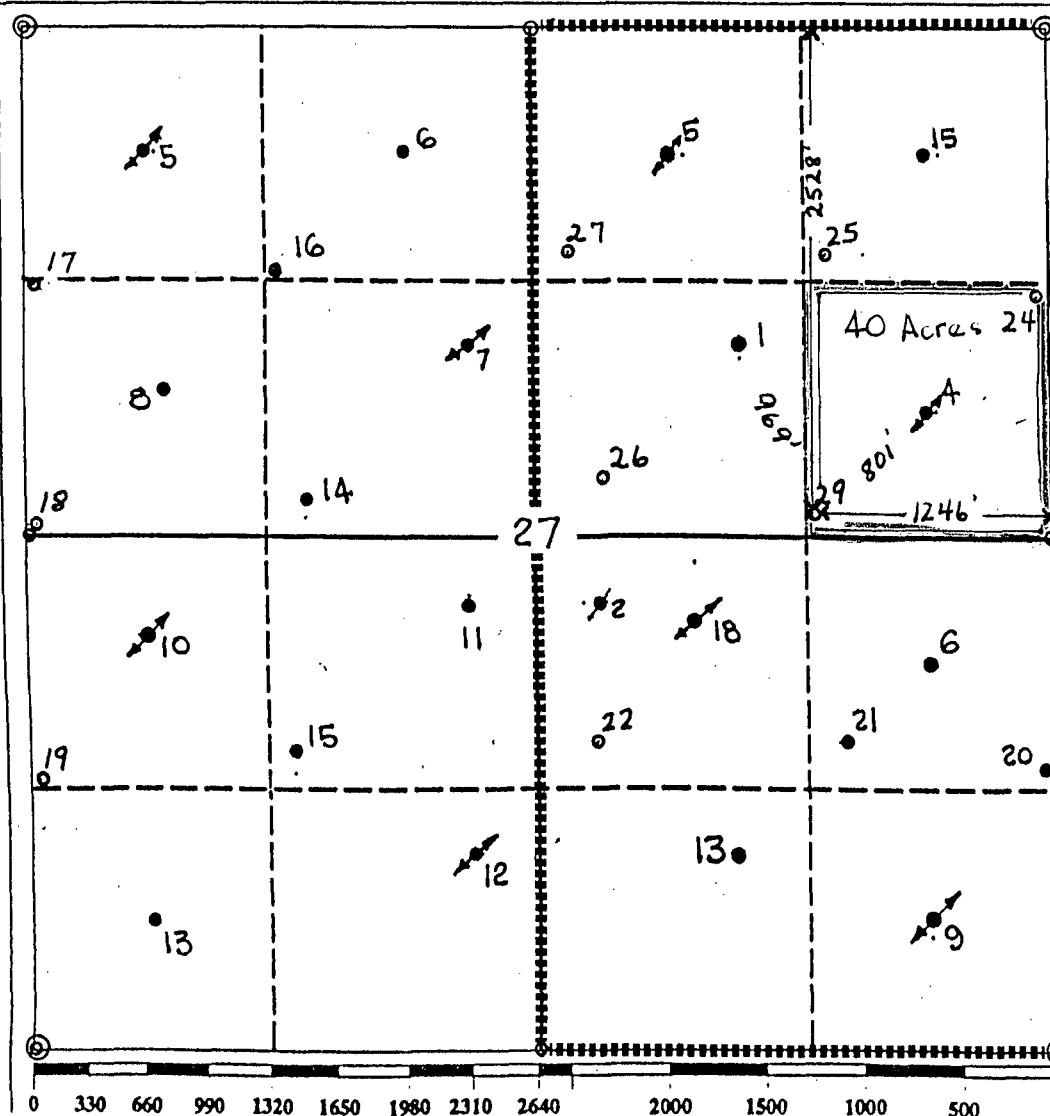
1000 Rio Brazos Rd., Aztec, NM 87410

WELL LOCATION AND ACREAGE DEDICATION PLAT

All Distances must be from the outer boundaries of the section

Operator TEXACO EXPLORATION AND PRODUCTION Inc.			Lease W.H. Rhodes Federal "B" NCT-1		Well No. 29
Unit Letter H	Section 27	Township 26-South	Range 37-East	County Lea	
Actual Footage Location of Well: 2528 feet from the North line and 1246 feet from the East line					
Ground level Elev. 2980	Producing Formation Yates/7 RVRs		Pool Rhodes Yates Seven Rivers		Dedicated Acreage: 40 Acres

1. Outline the acreage dedicated to the subject well by colored pencil or hatchure marks on the plat below.
2. If more than one lease is dedicated to the well, outline each and identify the ownership thereof (both as to working interest and royalty).
3. If more than one lease of different ownership is dedicated to the well, have the interest of all owners been consolidated by communitization, unitization, force-pooling, etc.?
☐ Yes ☐ No If answer is "yes" type of consolidation _____
If answer is "no" list the owners and tract descriptions which have actually been consolidated. (Use reverse side of this form if necessary.)
No allowable will be assigned to the well until all interests have been consolidated (by communitization, unitization, forced-pooling, or otherwise) or until a non-standard unit, eliminating such interest, has been approved by the Division.



OPERATOR CERTIFICATION

I hereby certify that the information contained herein is true and complete to the best of my knowledge and belief.

Signature

Royce D. Mariott

Printed Name

Royce D. Mariott

Position

Division Surveyor

Company

Texaco Expl. & Prod. Inc.

Date

May 24, 1993

SURVEYOR CERTIFICATION

I hereby certify that the well location shown on this plat was plotted from field notes of actual surveys made by me or under my supervision, and that the same is true and correct to the best of my knowledge and belief.

Date Surveyed

May 17, 1993

Signature & Seal of
Professional Surveyor

John S. Piper

Certificate No.

7254

John S. Piper

Sheet

of

Submit to Appropriate
District Office
State Lease - 4 copies
Fee Lease - 3 copies

State of New Mexico
Energy, Minerals and Natural Resources Department

Form C-102
Revised 1-1-89

OIL CONSERVATION DIVISION

DISTRICT I
P.O. Box 1980, Hobbs, NM 88240

P.O. Box 2088

Santa Fe, New Mexico 87504-2088

DISTRICT II
P.O. Drawer DD, Artesia, NM 88210

DISTRICT III
1000 Rio Brazos Rd., Aztec, NM 87410

WELL LOCATION AND ACREAGE DEDICATION PLAT

All Distances must be from the outer boundaries of the section

Operator TEXACO EXPLORATION AND PRODUCTION Inc.			Lease W. H. Rhodes Federal "B" NCT-1		Well No. 30
Unit Letter L	Section 26	Township 26-South	Range 37-East	County Lea	
Actual Footage Location of Well: 1377 feet from the South line and 1070 feet from the West line					
Ground level Elev. 2983	Producing Formation Yates/7 RVRS		Pool Rhodes Yates Seven Rivers		Dedicated Acreage: 40 Acres

1. Outline the acreage dedicated to the subject well by colored pencil or hatchure marks on the plat below.

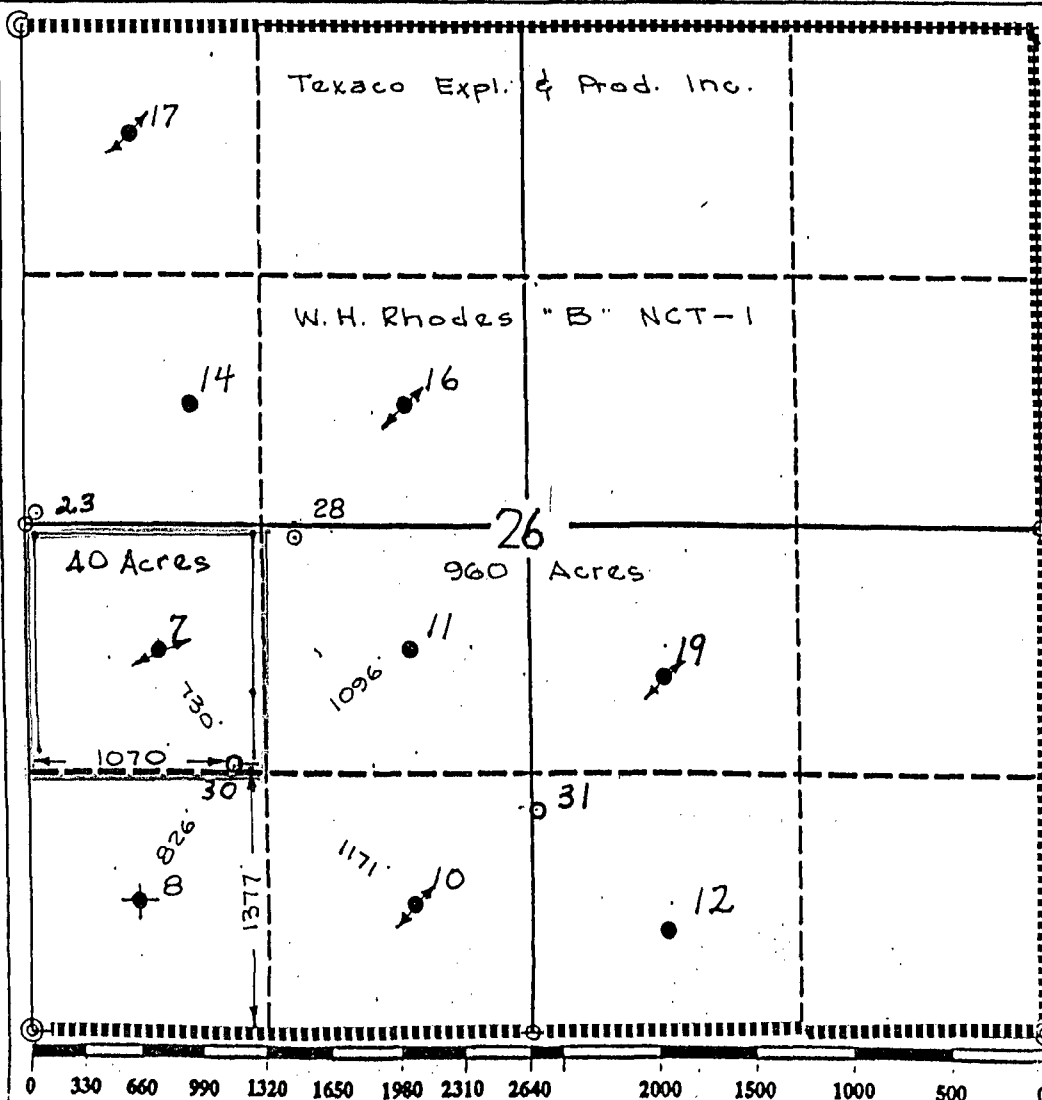
2. If more than one lease is dedicated to the well, outline each and identify the ownership thereof (both as to working interest and royalty).

3. If more than one lease of different ownership is dedicated to the well, have the interest of all owners been consolidated by communitization, unitization, force-pooling, etc.?

☐ Yes ☐ No If answer is "yes" type of consolidation

If answer is "no" list the owners and tract descriptions which have actually been consolidated. (Use reverse side of this form if necessary.)

No allowable will be assigned to the well until all interests have been consolidated (by communitization, unitization, forced-pooling, or otherwise) or until a non-standard unit, eliminating such interest, has been approved by the Division.



OPERATOR CERTIFICATION

I hereby certify that the information contained herein is true and complete to the best of my knowledge and belief.

Signature
Royce D. Mariott
Printed Name
Royce D. Mariott
Position
Division Surveyor
Company
Texaco Expl. & Prod. Inc.
Date
May 24, 1993

SURVEYOR CERTIFICATION

I hereby certify that the well location shown on this plat was plotted from field notes of actual surveys made by me or under my supervision, and that the same is true and correct to the best of my knowledge and belief.

Date Surveyed
May 19, 1993

Signature & Seal of
Professional Surveyor

John S. Piper

Certificate No.
7254 John S. Piper

Sheet of