

MERIDIAN OIL

Rec. 6/17/93

June 16, 1993

Sent Federal Express

Mr. William LeMay
New Mexico Oil Conservation Division
Post Office Box 2088
Santa Fe, New Mexico 87501

Re: Meridian Oil Inc. San Juan 28-5 Unit #232
1490'FSL, 610'FWL Section 24, T-28-N, R-5-W
Rio Arriba County, New Mexico

Dear Mr. LeMay:

Meridian Oil Inc. is applying for administrative approval of a non-standard location for the above location in the Basin Fruitland Coal and South Blanco Pictured Cliffs formations. This well is planned as a Basin Fruitland Coal/South Blanco Pictured Cliffs commingled completion, and application will be made to the New Mexico Oil Conservation Division for the commingling.

This application for the referenced location is due to terrain as shown on the enclosed maps.

The following attachments are for your review:

1. Application for Permit to Drill.
2. Completed C-102 at referenced location.
3. Offset operators/owners plat. Meridian Oil is the operator of the San Juan 28-5 Unit.
4. 7.5 minute topographic map showing the orthodox windows for the south half dedication for the Fruitland Coal and the southwest quarter dedication for the Pictured Cliffs. Also included is an enlargement of the map to define topographic features.
5. If the well were directionally drilled to a standard bottom hole location, the economics would be severely burdened due to the incremental directional drilling costs of \$200,000.

Sincerely,

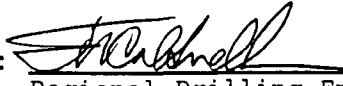


Peggy Bradfield
Regulatory/Compliance Representative

encs.

UNITED STATES
DEPARTMENT OF THE INTERIOR
BUREAU OF LAND MANAGEMENT

APPLICATION FOR PERMIT TO DRILL, DEEPEN, OR PLUG BACK

1a.	Type of Work DRILL	5. Lease Number SF-079250
1b.	Type of Well GAS	6. If Indian, All. or Tribe
2.	Operator MERIDIAN OIL	7. Unit Agreement Name San Juan 28-5 Unit
3.	Address & Phone No. of Operator PO Box 4289, Farmington, NM 87499 (505) 326-9700	8. Farm or Lease Name San Juan 28-5 Unit 9. Well Number 232
4.	Location of Well 1490' FSL, 610' FWL Latitude 36° 38' 37", Longitude 107° 19' 01"	10. Field, Pool, Wildcat Basin Ft Coal/ So. Blanco Pic. Cliffs 11. Sec., Twn, Rge, Mer. Sec 24, T-28-N, R-5-W NMPM
14.	Distance in Miles from Nearest Town 5 miles to Gobernador, NM	12. County Rio Arriba
		13. State NM
15.	Distance from Proposed Location to Nearest Property or Lease Line 610'	
16.	Acres in Lease	17. Acres Assigned to Well 344.45 S/2 160.00 SW/4 Unit L
18.	Distance from Proposed Location to Nearest Well, Drig, Compl, or Applied for on this Lease 200'	
19.	Proposed Depth 4450'	20. Rotary or Cable Tools Rotary
21.	Elevations (DF, FT, GR, Etc.) 7317' GR	22. Approx. Date Work will Start 2nd quarter 1993
23.	Proposed Casing and Cementing Program See Operations Plan attached	
24.	Authorized by:  Regional Drilling Engineer	6/4/93 Date

PERMIT NO. _____ APPROVAL DATE _____

APPROVED BY _____ TITLE _____ DATE _____

Archaeological Report submitted 5-17-93
Threatened and Endangered Species Report submitted
NOTE: This format is issued in lieu of U.S. BLM Form 3160-3

Submit to Administrator
District Office
State Leases - 4 copies
Fee Leases - 3 copies

State of New Mexico
Energy, Minerals and Natural Resources Department

Form C-182
Revised 1-1-89

OIL CONSERVATION DIVISION

P.O. Box 2088

Santa Fe, New Mexico 87504-2088

DISTRICT I

P.O. Box 1980, Hobbs, NM 88240

DISTRICT II

P.O. Drawer DD, Arama, NM 88210

DISTRICT III

1000 Rio Arriba Rd., Alamogordo, NM 87410

WELL LOCATION AND ACREAGE DEDICATION PLAT

All Distances must be from the outer boundaries of the section

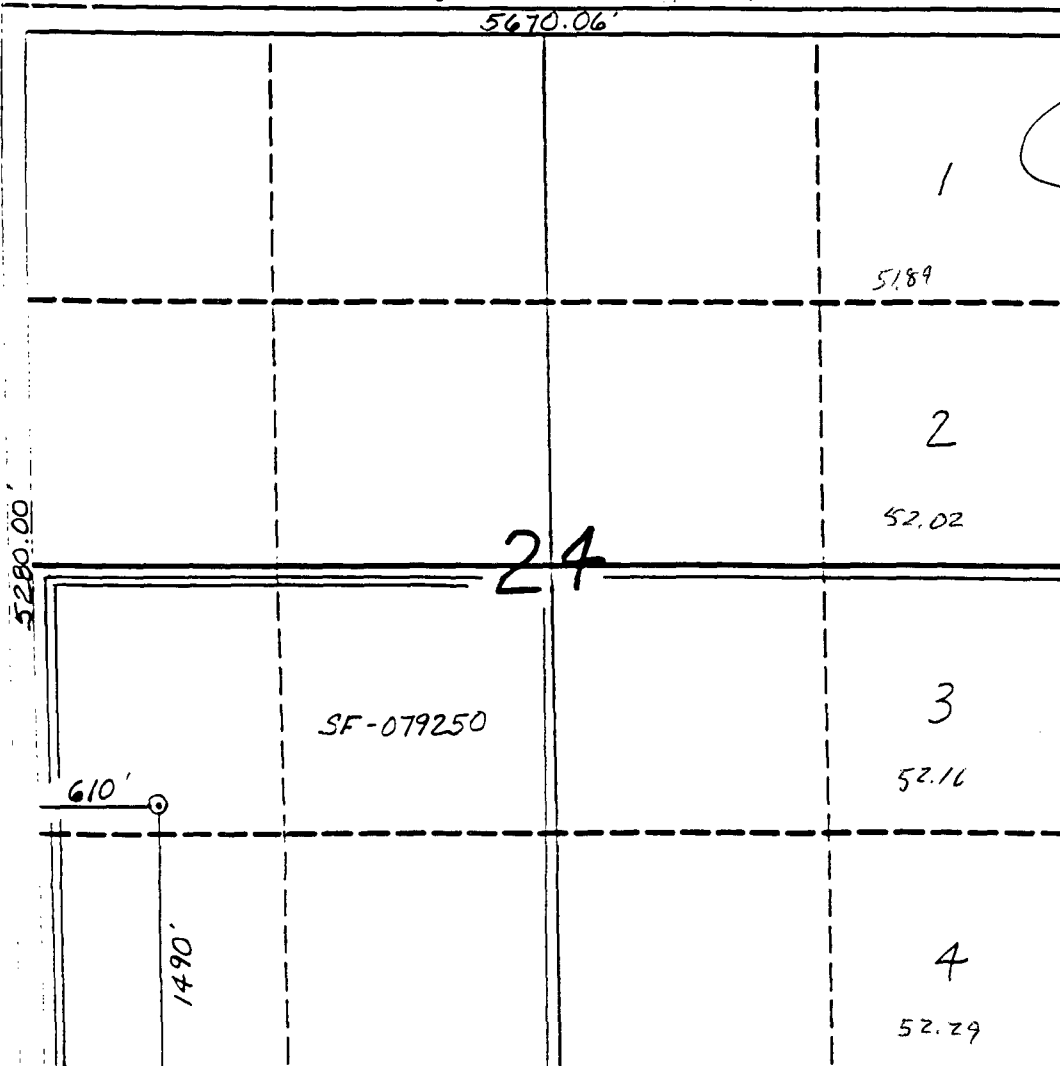
Operator	San Juan 28-5 Unit	Well No.	232				
Meridian Oil Inc.							
U&S Letter	Section	Township	Range	County			
L	24	28 North	5 West	Rio Arriba			
Actual Footage Location of Well:							
1490	feet from the	South	line and	610	feet from the	West	line
Gross Acre Elev.		Producing Formation		Pool		Dedicated Acreage	
7317'		Fruitland Coal/Pic. Cliffs		Basin/So. Blanco		344.45/160 Acres	

- Outline the acreage dedicated to the subject well by colored pencil or ink on the plat below.
- If more than one lease is dedicated to the well, outline each and identify the ownership thereof (both as to working interest and royalty).
- If more than one lease of different ownership is dedicated to the well, have the interest of all owners been consolidated by communitization, unitization, force-pooling, etc.?

☒ Yes ☐ No If answer is "yes" type of consolidation unitization

If answer is "no" list the owners and tract descriptions which have actually been consolidated. (Use reverse side of this form if necessary.)

No allowable will be assigned to the well until all interests have been consolidated (by communitization, unitization, force-pooling, or otherwise) or until a non-standard unit, eliminating such interest, has been approved by the Division.



OPERATOR CERTIFICATION

I hereby certify that the information contained herein is true and complete to the best of my knowledge and belief.

Peggy Bradfield
Signature

Peggy Bradfield

Printed Name
Regulatory Affairs

Position
Meridian Oil Inc.

Company
6-3-93

Date

SURVEYOR CERTIFICATION

I hereby certify that the well location shown on this plat was plotted from field notes of actual surveys made by me or under my supervision, and that the same is true and correct to the best of my knowledge and belief. 12-17-92

Date Surveyed
C. EDWARDS
Name
C. Edwards
Signature
Professional Surveyor

6357

OPERATIONS PLAN

Well Name: San Juan 28-5 Unit #232
Location: 1490'FSL, 610'FWL Section 24, T-28-N, R-05-W
 Rio Arriba County, New Mexico
 Latitude 36° 38' 37", Longitude 107° 19' 01"
Formation: Basin Fruitland Coal/So.Blanco Pictured Cliffs
Elevation: 7317'GL

Formation:	Top	Bottom	Contents
Surface	San Jose	3500'	
Ojo Alamo	3500'	3760'	aquifer
Kirtland	3760'	3980'	
Fruitland	3980'	4248'	
Fruitland Coal Top	4160'	4240'	gas
Pictured Cliffs	4248'	4450'	gas
Total Depth	4450'		

Logging Program: Mud logs from 3950' to Total Depth.
 IND, Dens, Neut, GR, ML to TD.

Mud Program:

Interval	Type	Weight	Vis.	Fluid Loss
0- 200'	Spud	8.4-8.9	40-50	no control
200-4450'	Non-dispersed	8.4-9.5	30-60	no control

Casing Program:

Hole Size	Depth Interval	Csg.Size	Wt.	Grade
12 1/4"	0 - 200'	8 5/8"	24.0#	K-40
7 7/8"	0 - 4450'	4 1/2"	10.5#	K-55

Tubing Program:

0 - 4450'	2 3/8"	4.7#	J-55
-----------	--------	------	------

Float Equipment: 8 5/8" surface casing - saw tooth guide shoe.
 Centralizers will be run in accordance with Onshore Order #2.

4 1/2" production casing - float shoe on bottom. Three centralizers run every other joint above shoe. Four centralizers run every 3rd joint to the base of the Ojo Alamo @ 3760'. Two turbolizing type centralizers - one below and one into the base of the Ojo Alamo @ 3760'. Standard centralizers thereafter every fourth joint up to the base of the surface pipe.

Wellhead Equipment: 8 5/8" x 4 1/2" x 2 3/8" x 11" 3000 psi xmas tree assembly.

San Juan 28-5 Unit #232

Cementing:

8 5/8" surface casing - cement with 235 sx Class "B" cement with 1/4# flocele/sx and 3% calcium chloride (298 cu.ft. of slurry, 200% excess to circulate to surface). WOC 12 hrs. Test casing to 600 psi for 30 minutes.

4 1/2" production casing -

First stage - lead w/75 sx Class "B" 65/35 Poz w/6% gel, 2% calcium chloride, 6.25# gilsonite/sx and 1/4# flocele/sx (133 cu.ft. of slurry), tail w/100 sx Class "B" w/2% calcium chloride, 5#/sx gilsonite, 0.25#/sx celloflake (118 cu.ft.), 100% excess to circulate stage tool @ 3900'.

Second stage - lead w/865 sx of Class "B" 65/35 Poz w/6% gel, 2% calcium chloride, 6.25# gilsonite/sx and 1/4# flocele/sx (1526 cu.ft.). Tail w/25 sx Class "B" w/2% calcium chloride (30 cu.ft. of slurry, 75% excess to circulate to surface). WOC 12 hrs. If cement does not circulate to surface, a temperature log will be run after 8 hours to determine TOC. Test casing to 1500 psi/minutes.

BOP and tests:

Surface to TD - 11" 2000 psi (minimum double gate BOP stack (Reference Figure #1 and #2). Prior to drilling out surface casing, test rams to 600#/30 min.

Completion - 6" 2000 psi (minimum) double gate BOP stack (Reference Figure #2). Prior to completion operations, test rams to 3000#/15 min.

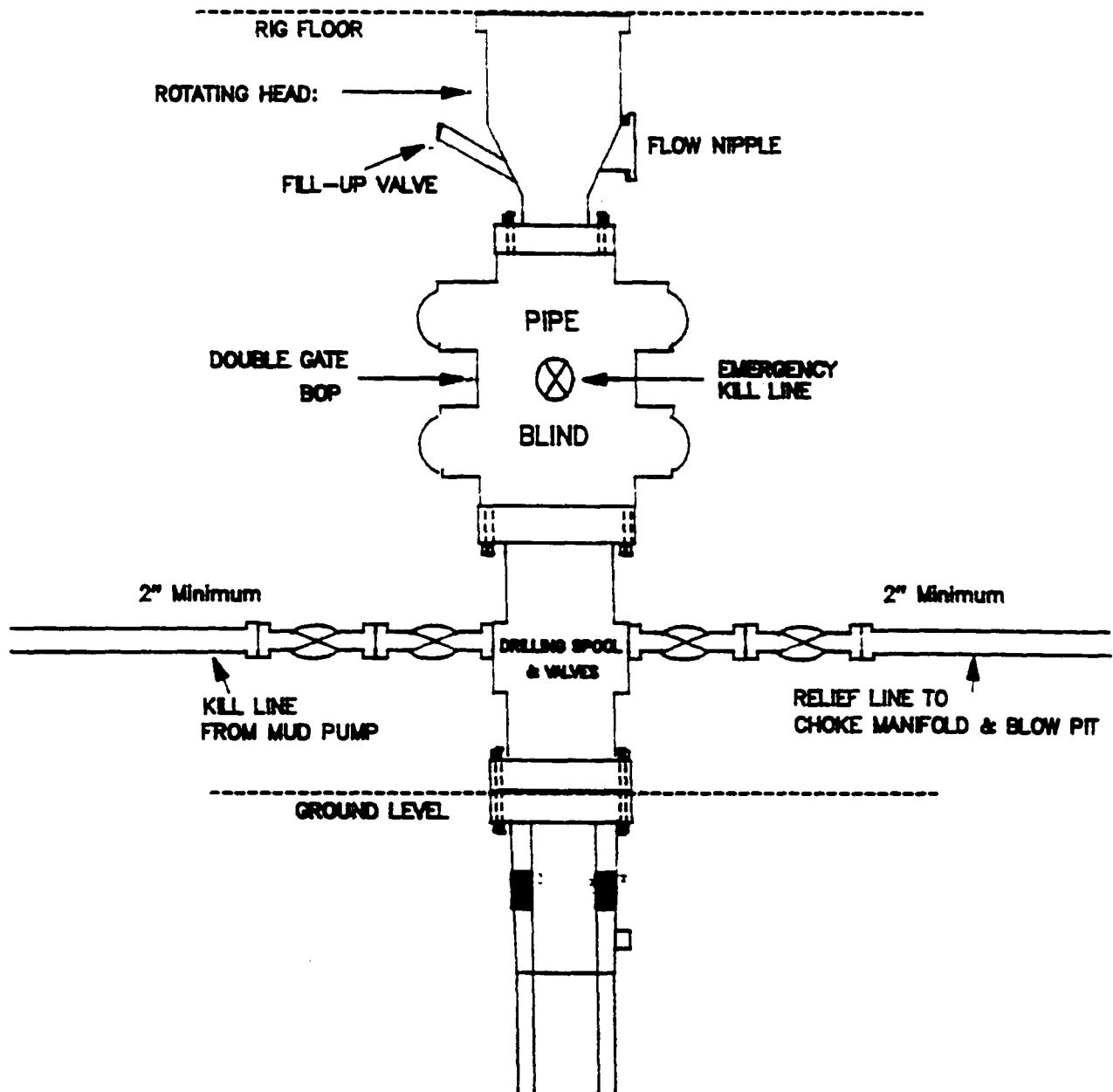
From surface to TD - choke manifold (Reference Figure #3).

Pipe rams will be actuated to least once each day and blind rams actuated once each trip to test proper functioning. An upper kelly cock valve with handle and drill string safety valves to fit each drill string will be maintained and available on the rig floor.

Additional information:

- * The Fruitland Coal and Pictured Cliffs formations will be completed and commingled per New Mexico Oil Conservation Division order.
- * Anticipated pore pressure for the Fruitland is 1150 psi and for the Pictured Cliffs is 1150 psi.
- * This gas is dedicated.
- * The south half of Section 24 is dedicated to the Fruitland Coal and the southwest quarter of the section is dedicated to the Pictured Cliffs.
- * New casing will be utilized.
- * Pipe movement (either rotation or reciprocation) will be done if hole conditions permit.

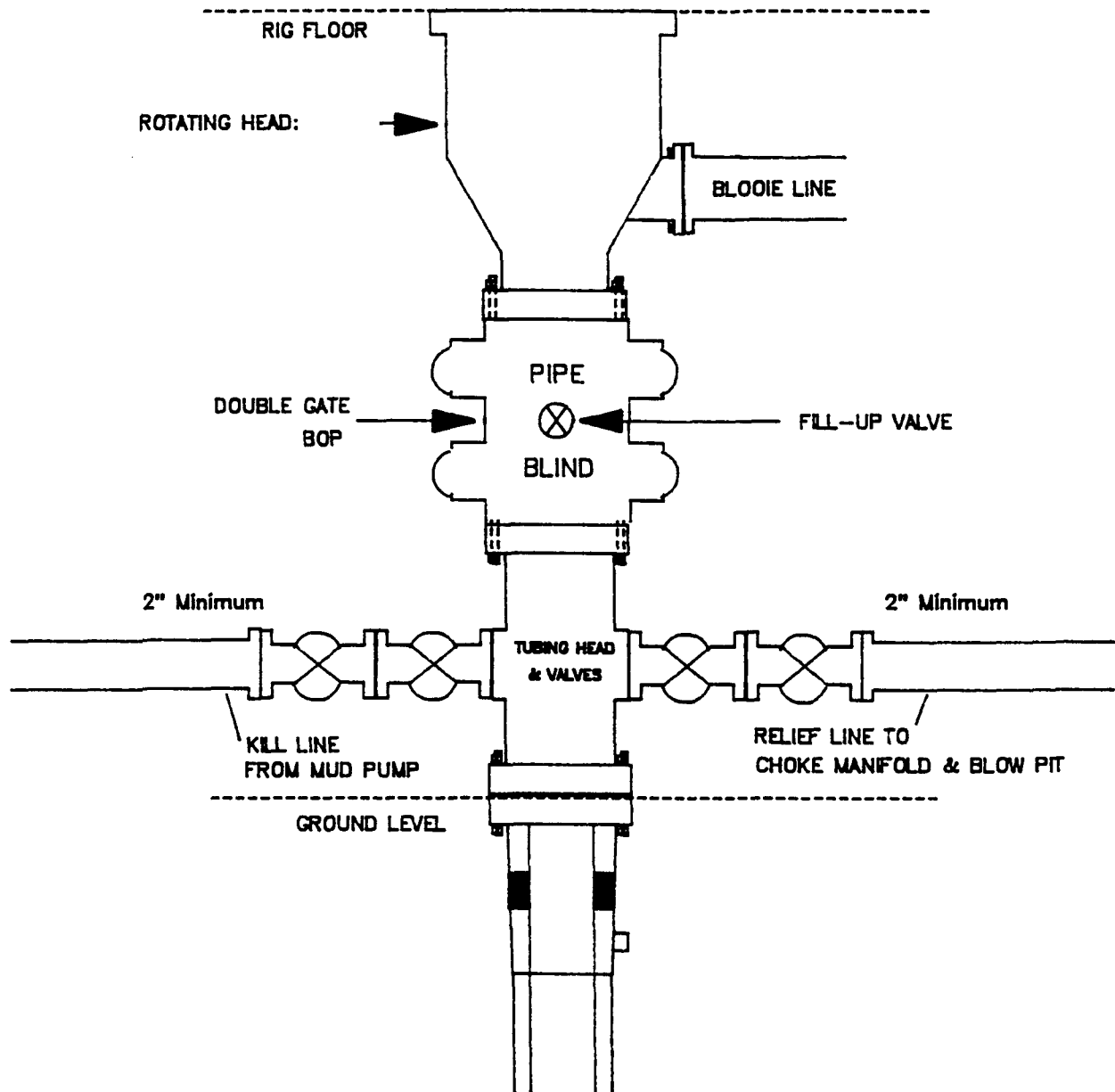
MERIDIAN OIL INC.
Drilling Rig
BOP Configuration



Minimum BOP installation for a typical Pictured Cliffs well from surface to Total Depth. 11" Bore (10" Nominal), 2000psi minimum working pressure double gate BOP to be equipped with blind and pipe rams. A Schaffer Type 50 or equivalent rotating head to be installed on the top of BOP. All equipment is 2000psi working pressure/or greater.

Figure #1

MERIDIAN OIL INC.
Completion Rig
BOP Configuration

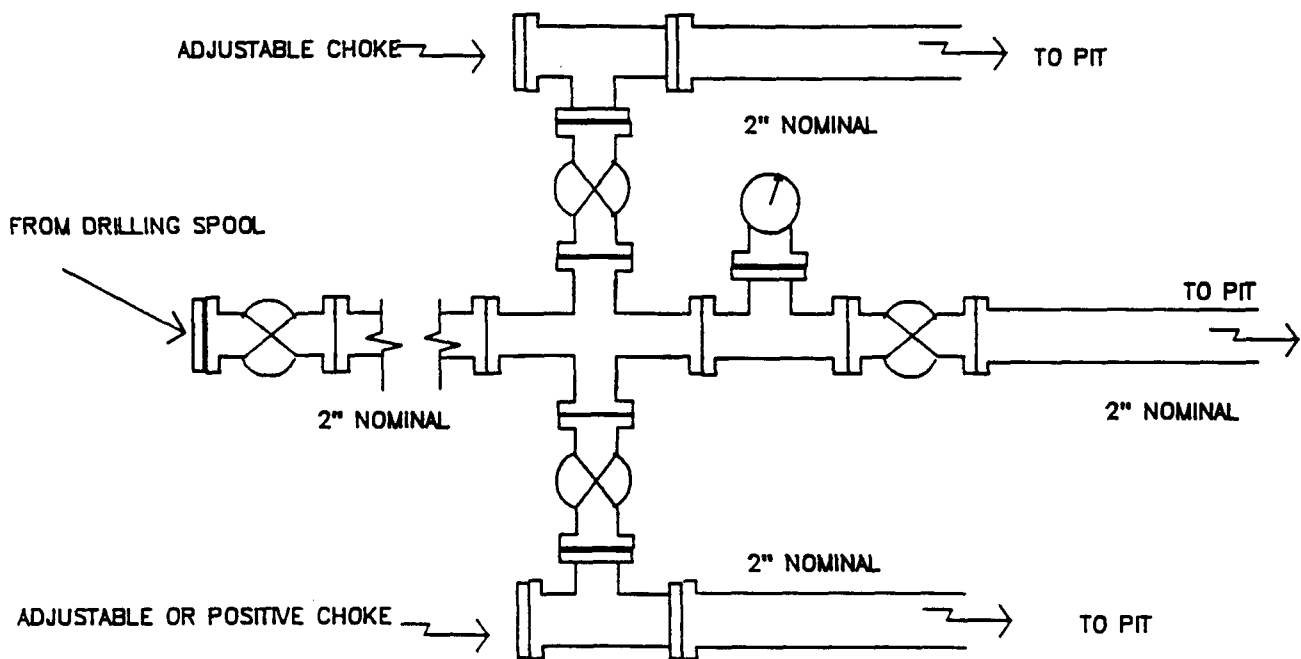


Minimum BOP installation for Completion Operations. 7 1/16" Bore (6" Nominal), 2000psi minimum working pressure double gate BOP to be equipped with blind and pipe rams.

Figure #2

MERIDIAN OIL INC.

Typical Pictured Cliffs Well Choke Manifold Configuration



Minimum choke manifold installation for a typical Pictured Cliffs well from surface to Total Depth. 2", 2000psi working pressure equipment with two chokes.

Figure #3

MERIDIAN OIL
San Juan 28-5 Unit #232
Multi-Point Surface Use Plan

1. Existing Roads - Refer to Map No. 1. Existing roads used to access the proposed location will be properly maintained for the duration of the project. Bureau of Land Management right-of-way has been applied for as shown on Map No. 1.
2. Planned Access Road - Refer to Map No. 1. None required.
3. Location of Existing Wells - Refer to Map No. 1A.
4. Location of Existing and/or Proposed Facilities if Well is Productive -
 - a. On the Well Pad - Refer to Plat No. 1, anticipated production facilities plat.
 - b. Off the Well Pad - Anticipated facilities off the well pad will be applied for as required.
5. Location and Type of Water Supply - Water will be hauled by truck for the proposed project and will be obtained from San Juan 29-6 Water Well #1 in located in SW/4 Section 28, T-29-N, R-6-W, New Mexico.
6. Source of Construction Materials - If construction materials are required for the proposed project, such materials will be obtained from a commercial quarry.
7. Methods of Handling Waste Materials - All garbage and trash materials will be removed from the site for proper disposal. A portable toilet will be provided for human waste and serviced in a proper manner. If liquids are left in the reserve pit after completion of the project, the pit will be fenced until the liquids have had adequate time to dry. The location clean-up will not take place until such time as the reserve pit can be properly covered over to prevent run-off from carrying waste materials into the watershed. All reserve pits will be lined with 12 mil bio-degradable plastic liner. All earthen pits will be so constructed as to prevent leakage from occurring; no earthen pit will be located on natural drainage. Generation of hazardous waste is not anticipated. Federal regulations will be adhered to regarding handling and disposal of such waste if so generated.
8. Ancillary Facilities - None anticipated.
9. Wellsite Layout - Refer to the location diagram and to the wellsite cut and fill diagram (Figure No. 4). The blow pit will be constructed with a 2'/160' grade to allow positive drainage to the reserve pit and prevent standing liquids in the blow pit.

10. Plans for Restoration of the Surface - After completion of the proposed project, the location will be cleaned and leveled. The location will be left in such a condition that will enable reseeding operations to be carried out. Seed mixture as designated by the responsible government agency will be used. The reseeding operations will be performed during the time period set forth by the responsible government agency. The permanent location facilities will be painted as designated by the responsible government agency.
11. Surface Ownership - Bureau of Land Management.
12. Other Information - Environmental stipulations as outlined by the responsible government agency will be adhered to. Refer to the archaeological report for a description of the topography, flora, fauna, soil characteristics, dwellings, historical and cultural sites.
13. Operator's Representative and Certification - Meridian Oil Regional Drilling Manager, Post Office Box 4289, Farmington, NM 87499, telephone (505) 326-9700. I hereby certify that I, or persons under my direct supervision, have inspected the proposed drill site and access route; that I am familiar with the conditions which presently exist; that the statements made in this plan, are to the best of my knowledge, true and correct; and that the work associated with the operations proposed herein will be performed by Meridian Oil Inc. and its contractors and subcontractors in conformity with this plan and the terms and conditions under which it is approved.


Regional Drilling Engineer

6/4/93
Date

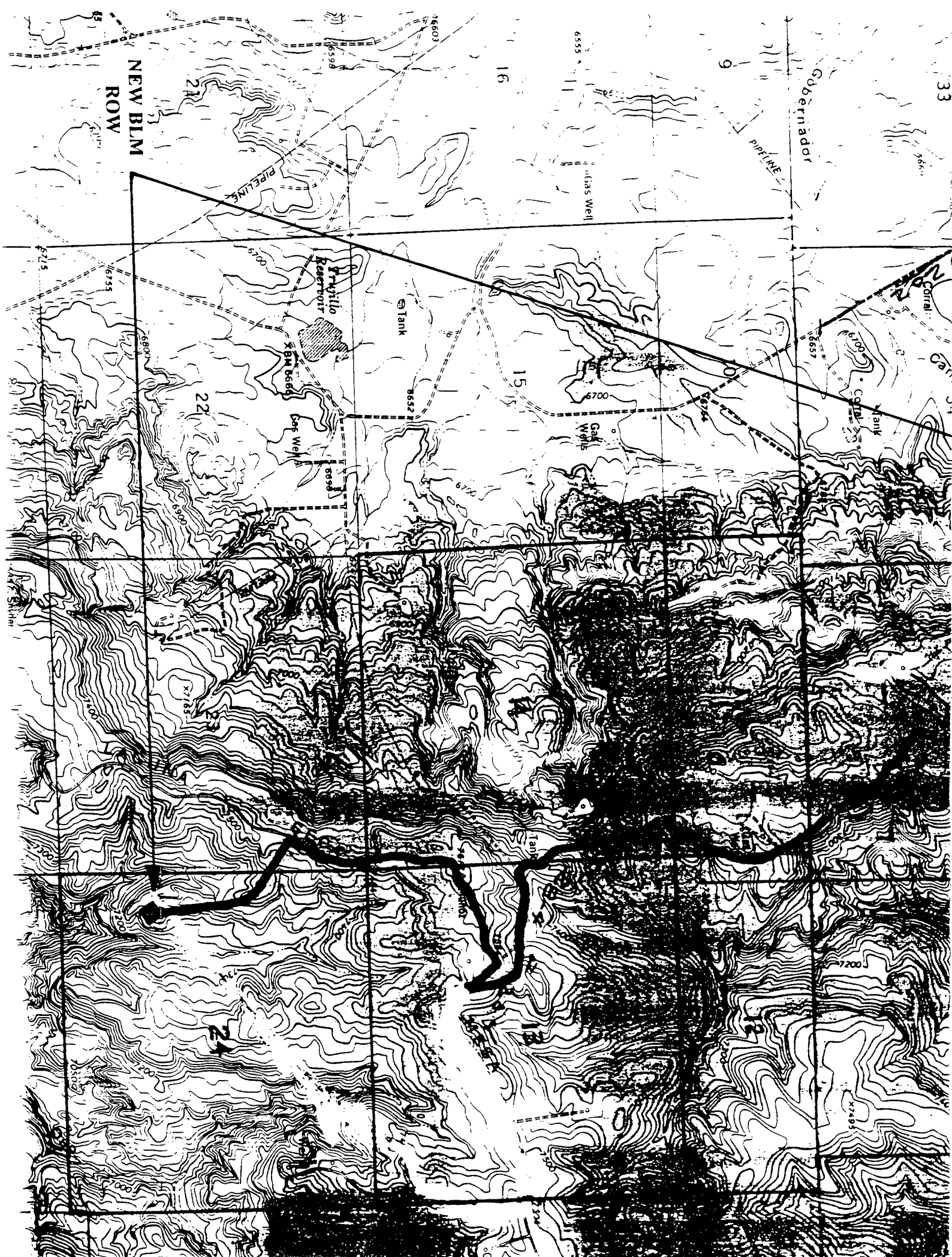
JWC:pb

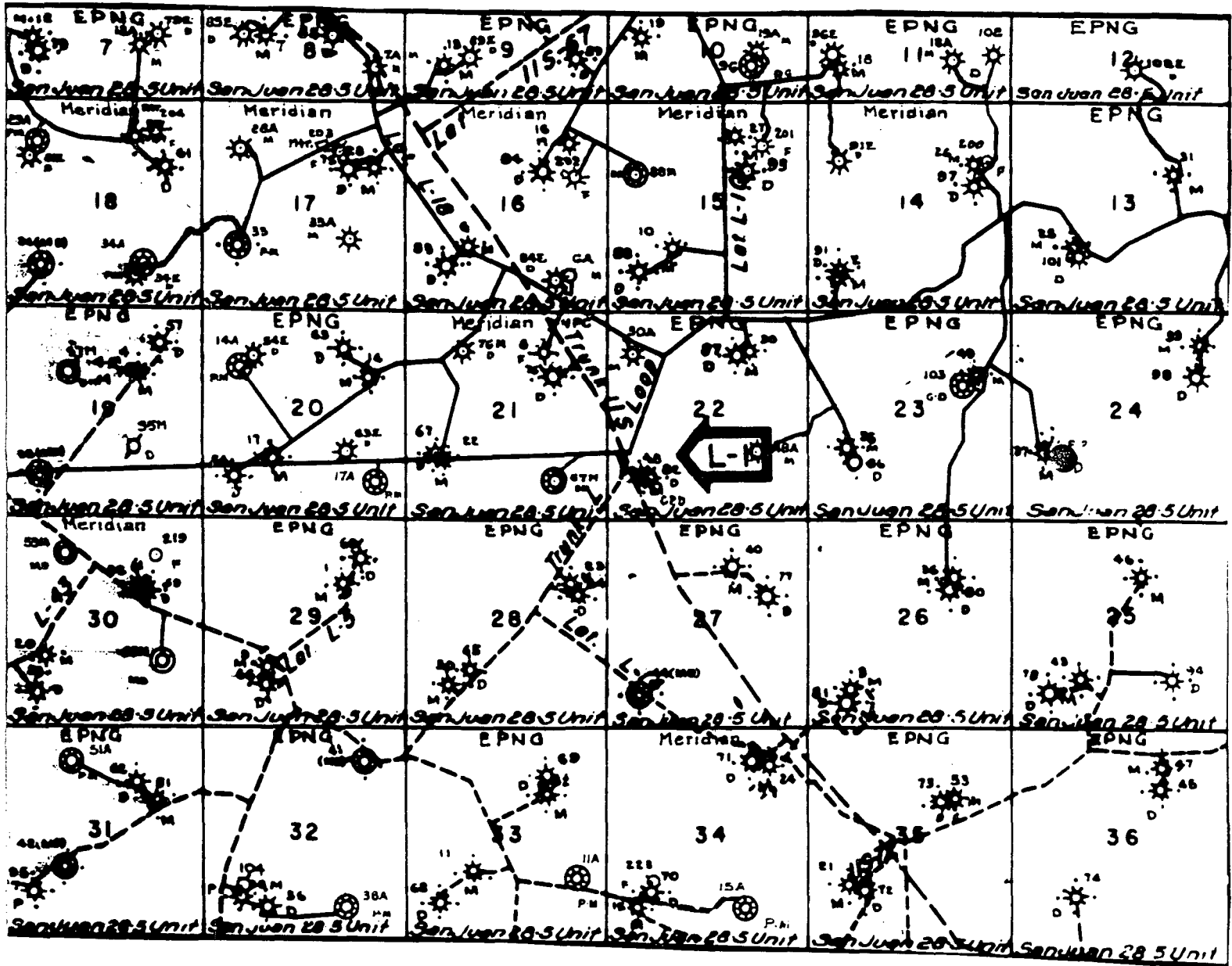
Gobernador

9

16

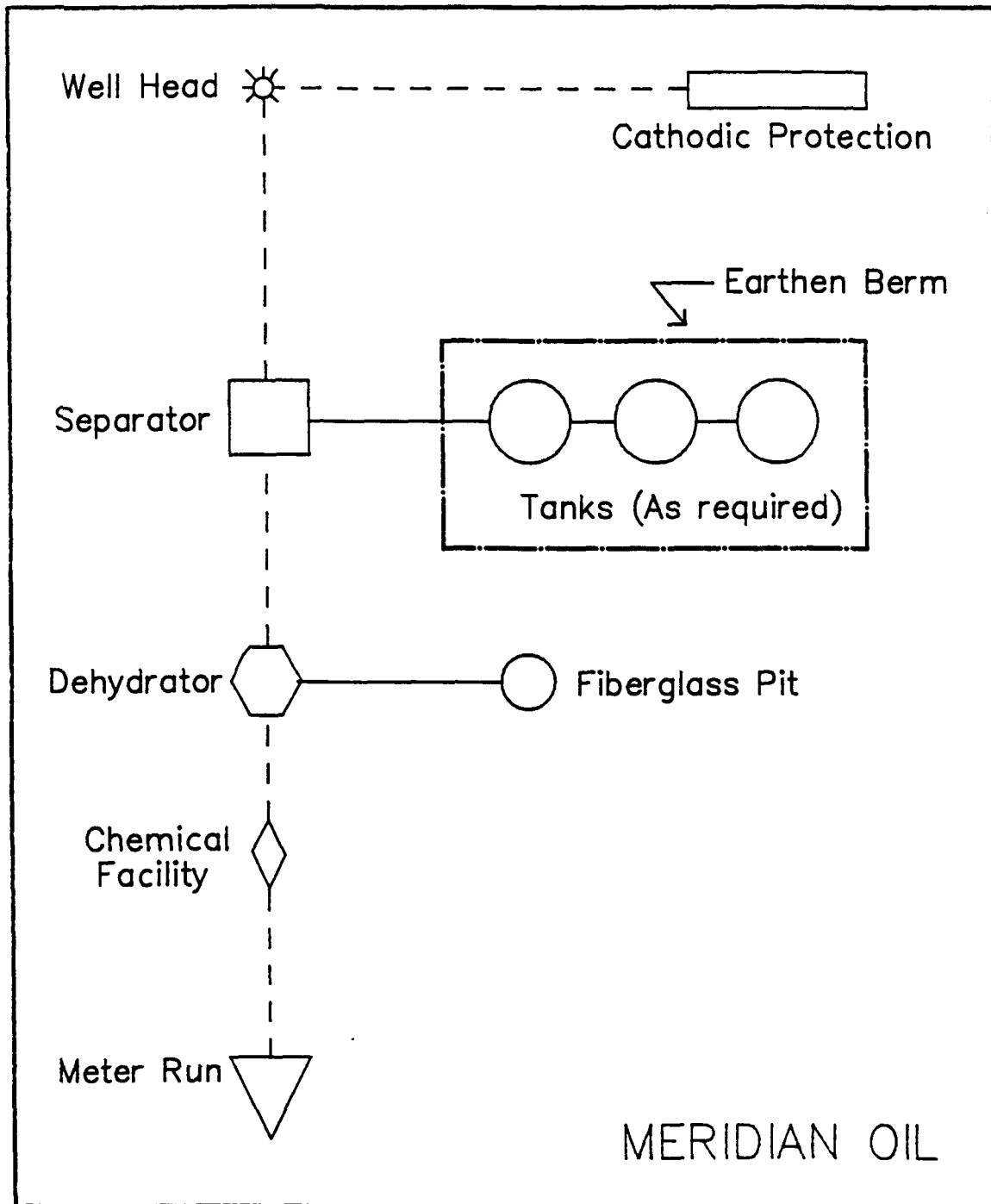
NEW BLM
ROW





MERIDIAN OIL INC.
 Pipeline Map
 T-28-N, R-05-W
 San Juan County, New Mexico
 San Juan 28-5 Unit #232
 Map #1A

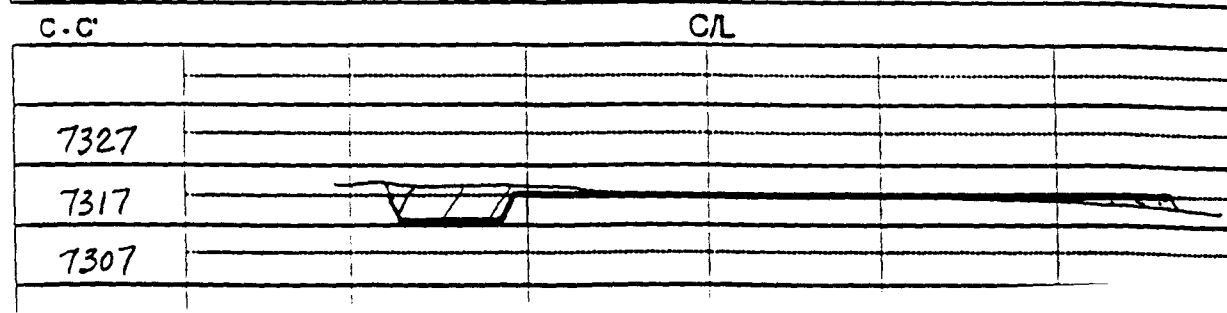
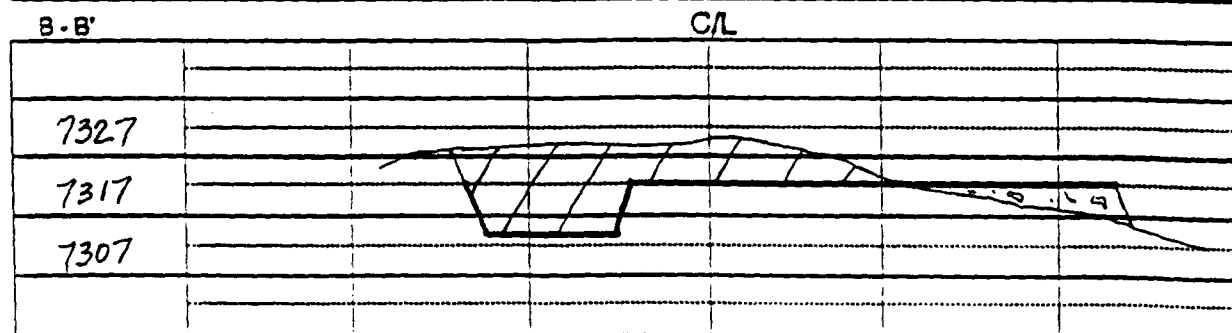
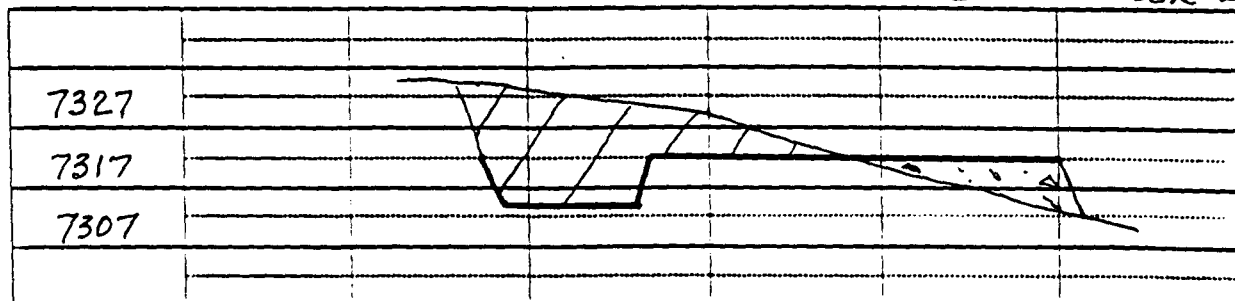
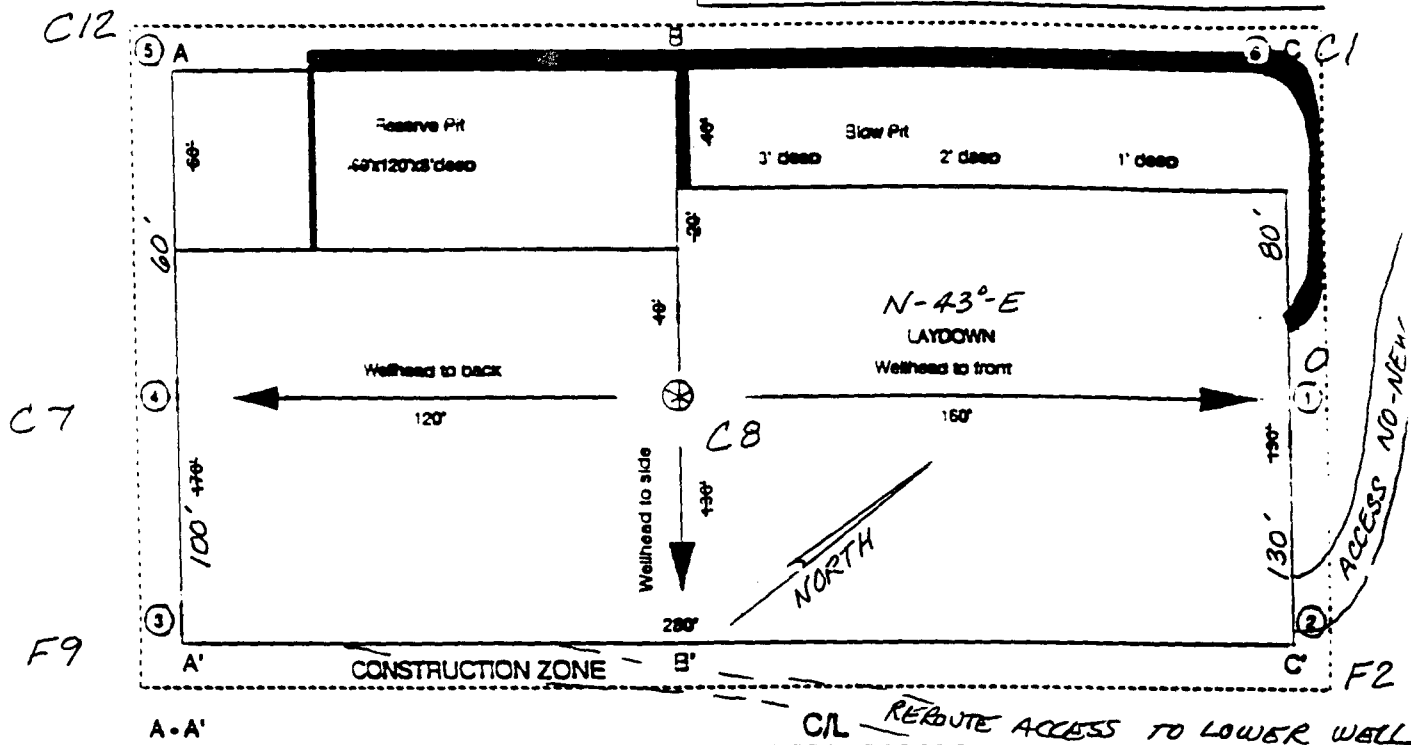
Well Pad Boundary



ANTICIPATED
PRODUCTION FACILITIES
FOR A
FRUITLAND COAL/PICTURED CLIFFS COMMINGLED WELL

Plat 2

Name: MOI SAN JUAN 28-5 UNIT #232
Footage: 1490 FSL 610 FWL
Sec 24 T. 28 N.R. 5 W NMPM
Co. RIO ARRIBA St. N.M.
Elevation: 7317' Date: 12-17-92



Submit to Assessor
District Office
State Lease - 4 copies
Fee Lease - 3 copies

State of New Mexico
Energy, Minerals and Natural Resources Department

Form C-102
Revised 1-1-89

OIL CONSERVATION DIVISION

P.O. Box 2088

Santa Fe, New Mexico 87504-2088

DISTRICT I
P.O. Box 1980, Hobbs, NM 88240

DISTRICT II
P.O. Drawer DD, Aztec, NM 88210

DISTRICT III
1000 Rio Blanco Rd., Aztec, NM 87410

WELL LOCATION AND ACREAGE DEDICATION PLAT

All Distances must be from the outer boundaries of the section

Operator Meridian Oil Inc. Lease San Juan 28-5 Unit Well No. 232

Unit Letter L Section 24 Township 28 North Range 5 West County MPM Rio Arriba

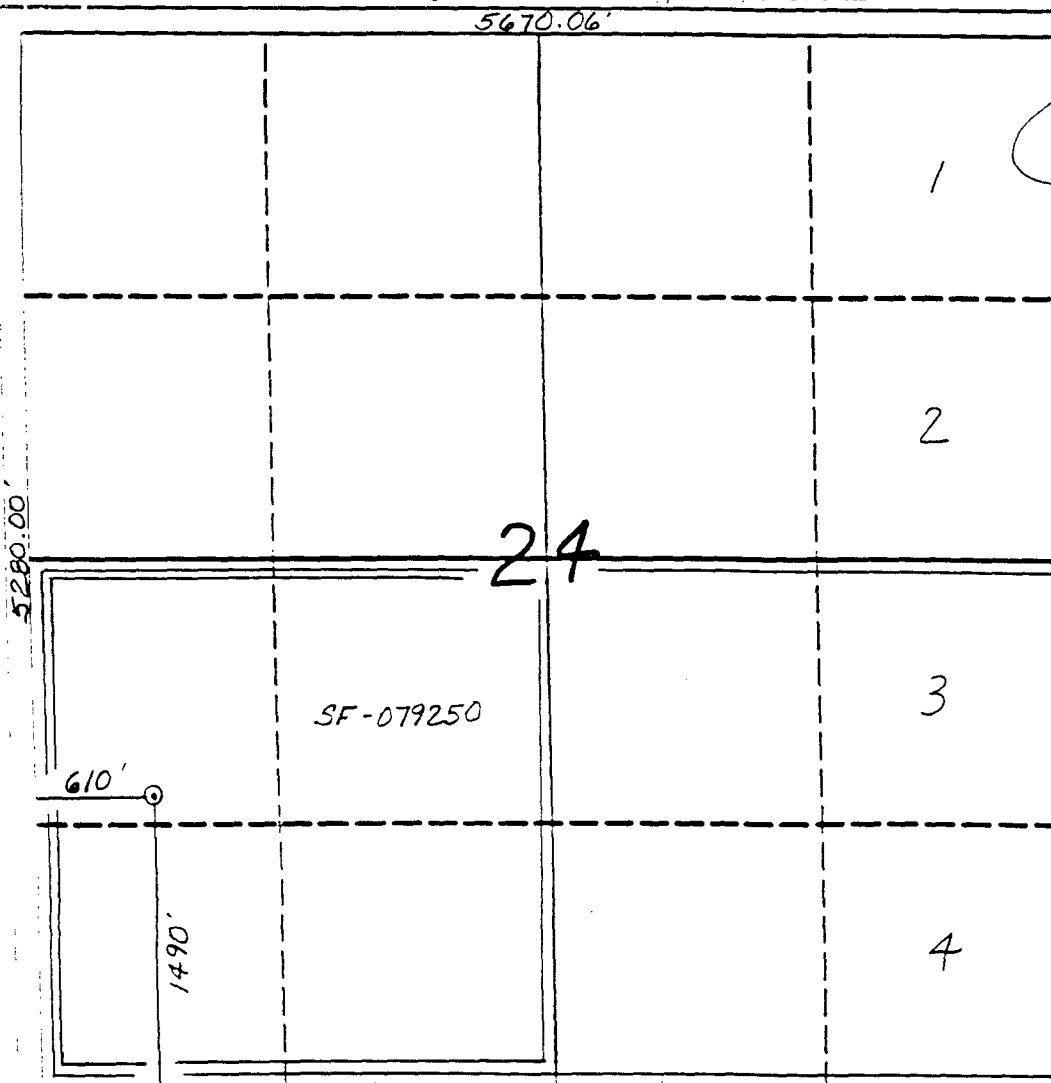
Actual Footage Location of Well: 1490 feet from the South line and 610 feet from the West line

Casualty level Elev. 7317' Producing Formation Fruitland Coal/Pic. Cliffs Pool Basin/So. Blanco Dedicated Acreage: 344.45/160 Acres

- Outline the acreage dedicated to the subject well by colored pencil or section marks on the plat below.
- If more than one lease is dedicated to the well, outline each and identify the ownership thereof (both as to working interest and royalty).
- If more than one lease of different ownership is dedicated to the well, have the interest of all owners been consolidated by communitization, unitization, force-pooling, etc.?
☒ Yes ☐ No If answer is "yes" type of consolidation unitization

If answer is "no" list the owners and tract descriptions which have recently been consolidated. (Use reverse side of this form if necessary).

No allowable will be assigned to the well until all interests have been consolidated (by communitization, unitization, force-pooling, or otherwise) or until a non-standard unit, eliminating such interest, has been approved by the Division.



OPERATOR CERTIFICATION

I hereby certify that the information contained herein is true and complete to the best of my knowledge and belief.

Signature Peggy Bradfield

Printed Name Regulatory Affairs

Position Meridian Oil Inc.

Company 6-3-93

Date

SURVEYOR CERTIFICATION

I hereby certify that the well location shown on this plat was plotted from field notes of actual surveys made by me or under my supervision, and that the same is true and correct to the best of my knowledge and belief. 12-17-92

Date Surveyed C. EDWARDS

Signature of Surveyor Neal C. Edwards

Professional Surveyor 3357

Surveyor's Seal

Certificate No.

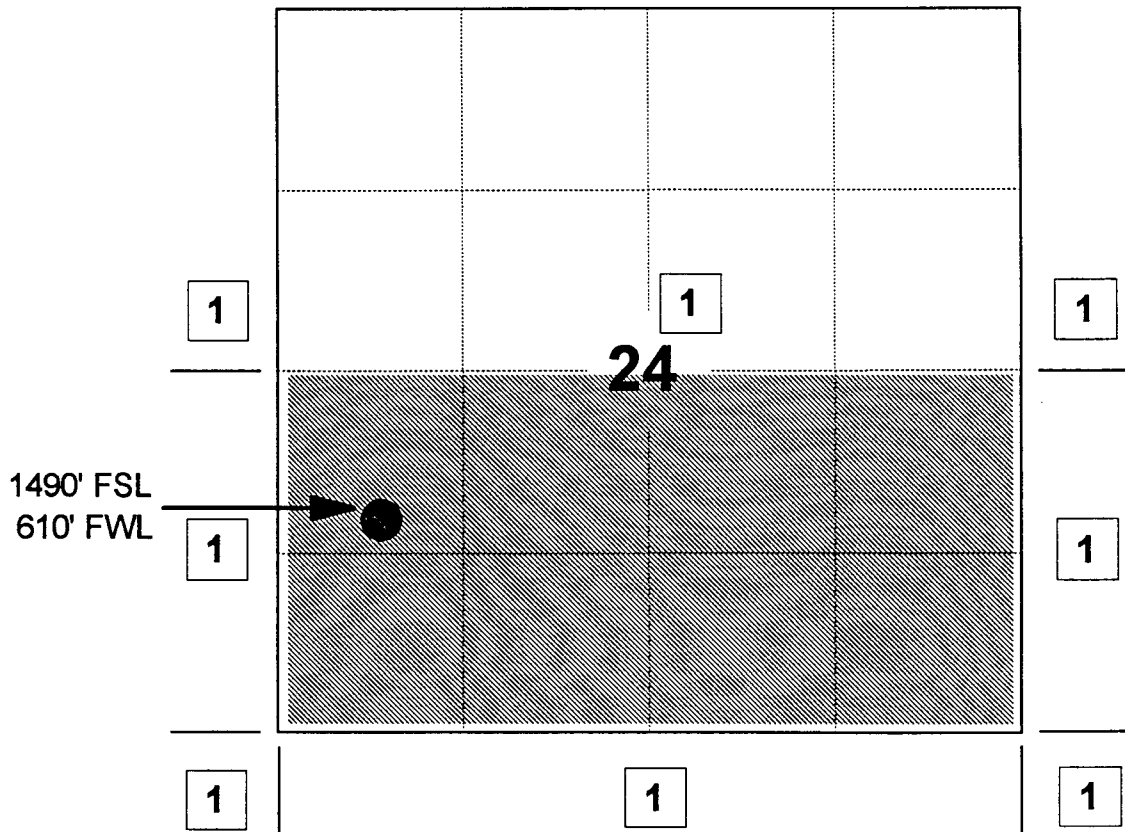
MERIDIAN OIL INC

SAN JUAN 28-5 UNIT #232

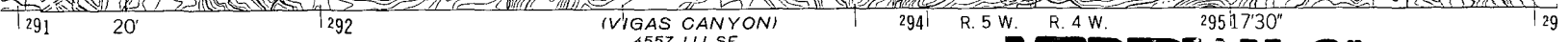
OFFSET OPERATOR \ OWNER PLAT

Fruitland Coal / Pictured Cliffs Formations Commingle

Township 28 North, Range 05 West



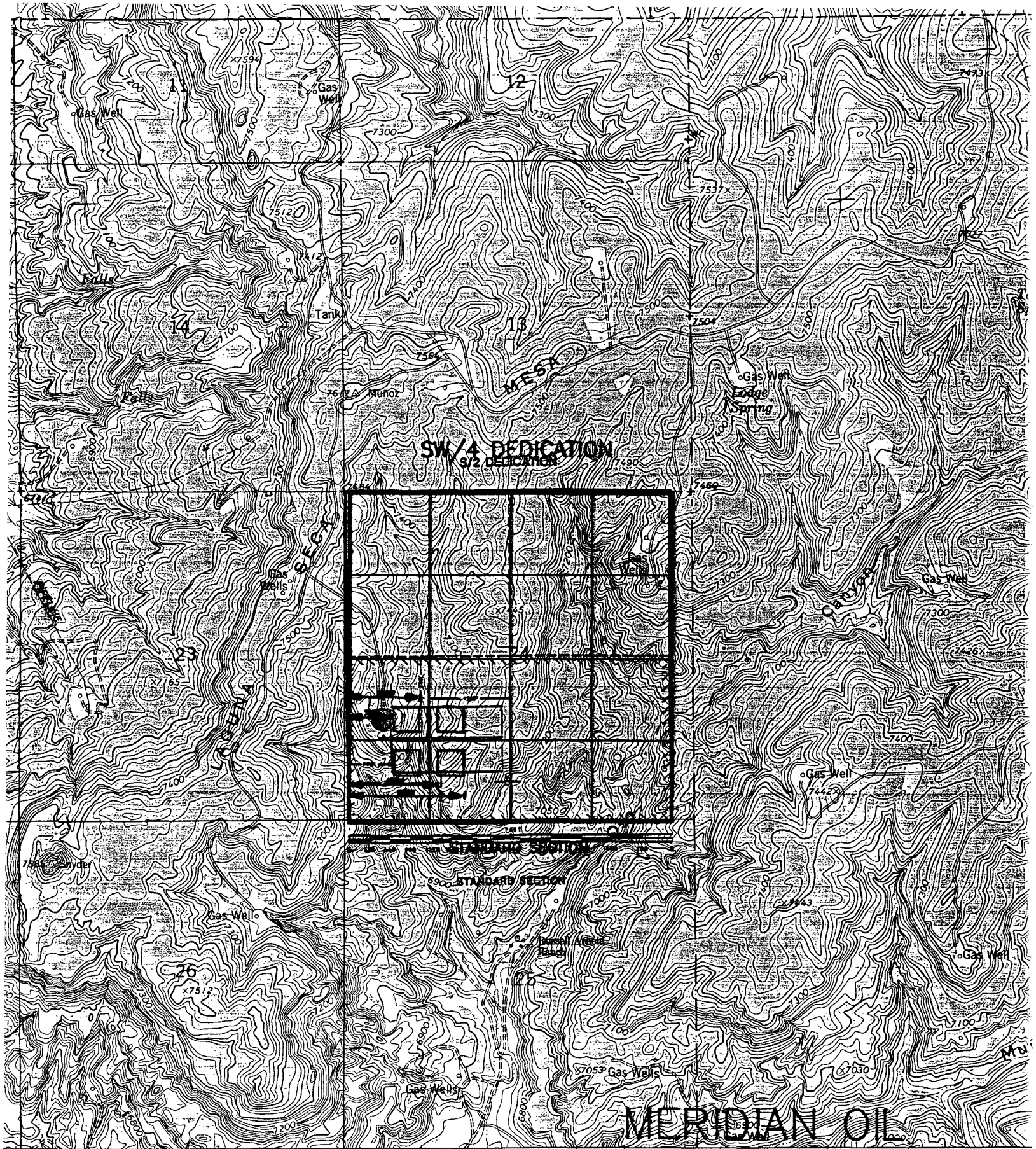
1) Meridian Oil Inc



SCALE 1:24 000

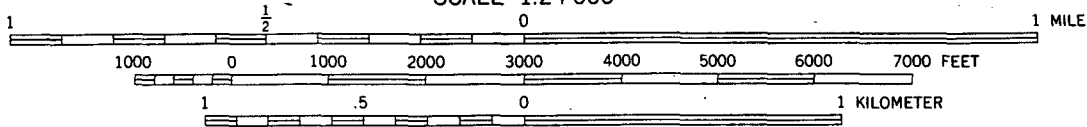


NEW MEX



(VIGAS CANYON)
4557 III SE

SCALE 1:24 000



CONTOUR INTERVAL 20 FEET
NATIONAL GEODETIC VERTICAL DATUM OF 1929

MERIDIAN OIL
MERIDIAN OIL

