

~~100~~
GW - _175_

**MONITORING
REPORTS**

DATE:

4 qtr 2007



RECEIVED
2008 JAN 24 AM 11 17

GW-175

Q4 2007 GROUNDWATER MONITORING REPORT

Hobbs Gas Plant
Lea County, New Mexico

January 2008

ARCADIS



Paul Schwarzweller
Environmental Scientist



Kelly Ruder, P.E.
Task Manager

**Q4 2007 Groundwater
Monitoring Report**

Hobbs Gas Plant

Prepared for:
DCP Midstream

Prepared by:
ARCADIS U.S., Inc.
630 Plaza Drive
Suite 100
Highlands Ranch
Colorado 80129
Tel 720 344 3500
Fax 720 344 3535

Our Ref.:
CO001041

Date:
17 January 2008

This document is intended only for the use of the individual or entity for which it was prepared and may contain information that is privileged, confidential, and exempt from disclosure under applicable law. Any dissemination, distribution, or copying of this document is strictly prohibited.

| | |
|--|----------|
| 1. Site Location and Background | 1 |
| 2. Groundwater Monitoring | 1 |
| 2.1 Water Level Gauging | 1 |
| 2.2 Groundwater Quality Monitoring | 1 |
| 3. Closing Remarks | 2 |

Tables

| | |
|---|---|
| 1 | Summary of Groundwater Elevations |
| 2 | Summary of BTEX Concentrations in Groundwater |
| 3 | Summary of Field Parameters in Groundwater |

Figures

| | |
|---|--|
| 1 | Site Location Map |
| 2 | Site Map |
| 3 | Groundwater Potentiometric Surface Map – December 13, 2007 |
| 4 | Groundwater Sample Results – December 2007 |

Appendices

| | |
|---|-------------------------------|
| A | Laboratory Analytical Reports |
|---|-------------------------------|

1. Site Location and Background

ARCADIS U.S., Inc. (ARCADIS) is submitting to DCP Midstream (DCP) the results of groundwater monitoring activities that were performed during the fourth quarter of 2007 (Q4 2007) at the Hobbs Gas Plant (Site) in Lea County, New Mexico (Figures 1 and 2). The Site occupies approximately 2.6 acres of land in the northeast quadrant of Section 36, Township 18 South, Range 36 East of the New Mexico Meridian.

Currently, the Site is configured as a cryogenic processing plant with a laboratory, an amine unit, compressors, sumps, mol sieve dehydration, and tank batteries. The plant also has an on-site water production well that is used for non-potable water. The Site is generally surrounded by undeveloped land. The Apex Compressor Station is located approximately 750 feet north of the Hobbs Gas Plant.

The ownership of the Hobbs Gas Plant was transferred from ConocoPhillips (COP) to DCP on March 10, 2004.

2. Groundwater Monitoring

ARCADIS conducted quarterly groundwater monitoring activities at the Site on December 13, 2007. Monitoring consisted of the measurement of water levels from six groundwater monitoring wells. Groundwater samples were collected from these six wells for water quality analysis. Water quality samples were analyzed for benzene, toluene, ethylbenzene, and xylenes (BTEX) by Environmental Protection Agency (EPA) Method 8260.

2.1 Water Level Gauging

ARCADIS collected water level measurements prior to disturbance of the water column (Table 1). Depth to water ranged from 60.32 feet to 62.19 feet below ground surface. Groundwater elevation contours constructed using the December 13, 2007 measurements are provided on Figure 3. The groundwater gradient is consistent with previous gauging events and varies from 0.003 to 0.004 feet per foot across the Site.

2.2 Groundwater Quality Monitoring

Prior to sampling, wells were purged a minimum of three well casing volumes to ensure the collection of a representative groundwater sample. Groundwater samples were collected using dedicated disposable polyethylene bailers, placed in laboratory-

supplied containers, and packed and shipped in accordance with accepted practices to Environmental Science Corporation in Mt. Juliet, Tennessee for analyses.

Table 2 summarizes BTEX concentrations in the groundwater samples collected during the Q4 2007 sampling events and the laboratory analytical reports are included in Appendix A. The groundwater sample results are also posted on Figure 4, which illustrates the distribution of petroleum hydrocarbon in groundwater. The Q4 2007 analytical results can be summarized as follows:

- Benzene was detected above the regulatory standard of 10 micrograms per liter (ug/L) in two monitoring wells. Monitoring well MWB yielded a benzene concentration of 420 ug/L and monitoring well MWC yielded a benzene concentration of 13 ug/L.
- Toluene, ethylbenzene, and xylenes were not detected above the regulatory standards of 1,000 ug/L, 700 ug/L, and 10,000 ug/L, respectively.

3. Closing Remarks

Two monitoring wells continue to exhibit elevated benzene concentrations. These wells are located in the east-central portions of the Site adjacent to process equipment. ARCADIS will continue to perform quarterly sampling at the Site. Results of Q1 2008 sampling will be reported in the Q1 2008 Groundwater Monitoring Report.

ARCADIS

Tables

**Table 1. Summary of Groundwater Elevations
Hobbs Gas Plant
DCP Midstream**

| Well ID | Survey Data (feet) | | | | Depth to Water Data (feet) | | | | Comments | |
|---------|--------------------|-----------|-------------------------|------------|----------------------------|----------------|--------------|---------------|----------|---------------------------------|
| | Easting | Northing | Top of Casing Elevation | Well Depth | Sample Date | Depth to Water | Depth to PSH | PSH Thickness | | Corrected Groundwater Elevation |
| MWA | 856827.79 | 622187.48 | 3755.87 | 71.01 | 12/13/2007 | 60.32 | - | - | 3695.55 | |
| | | | | | 9/18/2007 | 60.44 | - | - | 3695.43 | |
| | | | | | 6/21/2007 | 60.28 | - | - | 3695.59 | |
| | | | | | 3/27/2007 | 60.28 | - | - | 3695.59 | |
| | | | | | 11/14/2006 | 60.81 | - | - | 3695.06 | |
| | | | | | 8/14/2006 | 60.71 | - | - | 3695.16 | |
| | | | | | 6/14/2006 | 60.71 | - | - | 3695.16 | |
| | | | | | 3/23/2006 | 60.54 | - | - | 3695.33 | |
| MWB | 857051.22 | 622018.88 | 3755.94 | 70.96 | 12/13/2007 | 61.85 | - | - | 3694.09 | |
| | | | | | 9/18/2007 | 61.93 | - | - | 3694.01 | |
| | | | | | 6/21/2007 | 61.84 | - | - | 3694.10 | |
| | | | | | 3/27/2007 | 61.77 | - | - | 3694.17 | |
| | | | | | 11/14/2006 | 62.16 | - | - | 3693.78 | |
| | | | | | 8/14/2006 | 62.34 | - | - | 3693.60 | |
| | | | | | 6/15/2006 | 61.58 | - | - | 3694.36 | |
| | | | | | 3/23/2006 | 62.08 | - | - | 3693.86 | |
| MWC | 857099.75 | 622104.39 | 3755.59 | 75.02 | 12/13/2007 | 61.34 | - | - | 3694.25 | |
| | | | | | 9/18/2007 | 61.48 | - | - | 3694.11 | |
| | | | | | 6/21/2007 | 61.57 | - | - | 3694.02 | |
| | | | | | 3/27/2007 | 61.28 | - | - | 3694.31 | |
| | | | | | 11/14/2006 | 61.70 | - | - | 3693.89 | |
| | | | | | 8/14/2006 | 61.88 | - | - | 3693.71 | |
| | | | | | 6/14/2006 | 61.86 | - | - | 3693.73 | |
| | | | | | 3/23/2006 | 61.69 | - | - | 3693.90 | |
| MWD | 856951.32 | 622011.72 | 3755.43 | 70.02 | 12/13/2007 | 60.91 | - | - | 3694.52 | |
| | | | | | 9/18/2007 | 61.05 | - | - | 3694.38 | |
| | | | | | 6/21/2007 | 60.97 | - | - | 3694.46 | |
| | | | | | 3/27/2007 | 60.85 | - | - | 3694.58 | |
| | | | | | 11/14/2006 | 61.22 | - | - | 3694.21 | |
| | | | | | 8/14/2006 | 61.36 | - | - | 3694.07 | |
| | | | | | 6/14/2006 | 61.32 | - | - | 3694.11 | |
| | | | | | 3/23/2006 | 61.09 | - | - | 3694.34 | |
| MWE | 857056.07 | 621858.61 | 3754.36 | 71.55 | 12/13/2007 | 60.91 | - | - | 3693.45 | |
| | | | | | 9/18/2007 | 61.09 | - | - | 3693.27 | |
| | | | | | 6/21/2007 | 61.09 | - | - | 3693.27 | |
| | | | | | 3/27/2007 | 60.86 | - | - | 3693.50 | |
| | | | | | 11/14/2006 | 61.27 | - | - | 3693.09 | |
| | | | | | 8/14/2006 | 61.41 | - | - | 3692.95 | |
| | | | | | 6/15/2006 | 61.32 | - | - | 3693.04 | |
| | | | | | 3/23/2006 | 61.09 | - | - | 3693.27 | |
| MWF | 857173.90 | 622096.40 | 3756.13 | 74.65 | 12/13/2007 | 62.19 | - | - | 3693.94 | |
| | | | | | 9/18/2007 | 62.31 | - | - | 3693.82 | |
| | | | | | 6/21/2007 | 62.32 | - | - | 3693.81 | |
| | | | | | 3/27/2007 | 67.05 | - | - | 3689.08 | |
| | | | | | 11/14/2006 | 62.46 | - | - | 3693.67 | |
| | | | | | 8/14/2006 | 62.68 | - | - | 3693.45 | |
| | | | | | 6/14/2006 | 62.72 | - | - | 3693.41 | |
| | | | | | 3/23/2006 | 62.53 | - | - | 3693.60 | |

PSH: Phase-Separated Hydrocarbon
-: No data

**Table 2. Summary of BTEX Concentrations in Groundwater
Hobbs Gas Plant
DCP Midstream**

| Well ID | Sample Date | Benzene | Toluene | Ethyl | | TPH | |
|-------------------|-------------|----------------|---------|---------|---------|-------|-------|
| | | | | benzene | Xylenes | | |
| | | -----ug/L----- | | | | mg/L | |
| MWA | 12/13/2007 | < 1.0 | < 5.0 | < 1.0 | < 3.0 | - | |
| | 9/18/2007 | < 1.0 | < 5.0 | < 1.0 | < 3.0 | - | |
| | 6/21/2007 | < 1.0 | < 5.0 | < 1.0 | < 3.0 | - | |
| | 3/28/2007 | < 1.0 | < 5.0 | < 1.0 | < 3.0 | - | |
| | 11/14/2006 | < 1.0 | < 5.0 | < 1.0 | < 3.0 | - | |
| | 8/14/2006 | < 0.5 | < 5.0 | < 0.5 | < 1.5 | - | |
| | 6/14/2006 | < 1.0 | < 5.0 | < 1.0 | < 3.0 | < 0.1 | |
| | 3/23/2006 | < 1.0 | < 5.0 | < 1.0 | < 3.0 | < 0.1 | |
| DUP | 3/23/2006 | < 1.0 | < 5.0 | < 1.0 | < 3.0 | < 0.1 | |
| MWB | 12/13/2007 | 420 | 86 | 140 | 630 | - | |
| | 9/18/2007 | 410 | 87 | 160 | 1100 | - | |
| | 6/21/2007 | 310 | 81 | 110 | 740 | - | |
| | 3/28/2007 | 300 | 120 | 140 | 1000 | - | |
| | 11/14/2006 | 200 | 74 | 82 | 440 | - | |
| | 8/14/2006 | 29 | 6.2 | < 0.5 | 48 | - | |
| | 6/15/2006 | 150 | 110 | 40 | 270 | 1.7 | |
| | DUP | 6/15/2006 | 110 | 50 | 27 | 160 | 0.86 |
| DUP | 3/23/2006 | 200 | 370 | 43 | 750 | 3.4 | |
| MWC | 12/13/2007 | 13 | < 5.0 | 4.5 | 22 | - | |
| DUP | 12/13/2007 | 17 | < 5.0 | 5.8 | 25 | - | |
| | 9/18/2007 | 43 | 5.3 | 14 | 57 | - | |
| DUP | 9/18/2007 | 48 | 6.9 | 16 | 64 | - | |
| | 6/21/2007 | 18 | 7.1 | 3.5 | 26 | - | |
| | 3/28/2007 | 84 | 44 | 19 | 160 | - | |
| | 11/14/2006 | 30 | 19 | 11 | 83 | - | |
| | 8/14/2006 | 31 | 8.7 | 2.9 | 58 | - | |
| | 6/14/2006 | 80 | 37 | 22 | 180 | 2.1 | |
| | 3/23/2006 | < 1.0 | < 5.0 | < 1.0 | < 3.0 | 0.72 | |
| MWD | 12/13/2007 | < 1.0 | < 5.0 | < 1.0 | < 3.0 | - | |
| | 9/18/2007 | < 1.0 | < 5.0 | < 1.0 | < 3.0 | - | |
| | 6/21/2007 | < 1.0 | < 5.0 | < 1.0 | < 3.0 | - | |
| | 3/28/2007 | < 1.0 | < 5.0 | < 1.0 | < 3.0 | - | |
| | 11/14/2006 | < 1.0 | < 5.0 | < 1.0 | < 3.0 | - | |
| | 8/14/2006 | < 0.5 | < 5.0 | < 0.5 | < 1.5 | - | |
| | 6/14/2006 | < 1.0 | < 5.0 | < 1.0 | < 3.0 | < 0.1 | |
| | 3/23/2006 | < 1.0 | < 5.0 | < 1.0 | < 3.0 | < 0.1 | |
| MWE | 12/13/2007 | < 1.0 | < 5.0 | < 1.0 | < 3.0 | - | |
| | 9/18/2007 | < 1.0 | < 5.0 | < 1.0 | < 3.0 | - | |
| | 6/21/2007 | < 1.0 | < 5.0 | < 1.0 | < 3.0 | - | |
| | 3/28/2007 | < 1.0 | < 5.0 | < 1.0 | < 3.0 | - | |
| | DUP | 3/28/2007 | < 1.0 | < 5.0 | < 1.0 | < 3.0 | - |
| | | 11/14/2006 | < 1.0 | < 5.0 | < 1.0 | < 3.0 | - |
| | | 8/14/2006 | < 0.5 | < 5.0 | < 0.5 | < 1.5 | - |
| | | 6/15/2006 | < 1.0 | < 5.0 | < 1.0 | < 3.0 | < 0.1 |
| | 3/23/2006 | < 1.0 | < 5.0 | < 1.0 | < 3.0 | < 0.1 | |
| MWF | 12/13/2007 | < 1.0 | < 5.0 | < 1.0 | < 3.0 | - | |
| | 9/18/2007 | < 1.0 | < 5.0 | < 1.0 | < 3.0 | - | |
| | 6/21/2007 | < 1.0 | < 5.0 | < 1.0 | < 3.0 | - | |
| | DUP | 6/21/2007 | < 1.0 | < 5.0 | < 1.0 | < 3.0 | - |
| | | 3/27/2007 | < 1.0 | < 5.0 | < 1.0 | < 3.0 | - |
| | | 11/14/2006 | < 1.0 | < 5.0 | < 1.0 | < 3.0 | - |
| | DUP | 11/14/2006 | < 1.0 | < 5.0 | < 1.0 | < 3.0 | - |
| | | 8/14/2006 | < 0.5 | < 5.0 | < 0.5 | < 1.5 | - |
| DUP | 8/14/2006 | < 0.5 | < 5.0 | < 0.5 | < 1.5 | - | |
| | 6/14/2006 | < 1.0 | < 5.0 | < 1.0 | < 3.0 | < 0.1 | |
| | 3/23/2006 | < 1.0 | < 5.0 | < 1.0 | < 3.0 | < 0.1 | |
| Water Supply Well | 8/14/2006 | < 0.5 | < 5.0 | < 0.5 | < 1.5 | - | |

Notes:
 MW: Monitoring well
 TPH: Total Petroleum Hydrocarbons
 ug/L: Micrograms per liter
 mg/L: Milligrams per liter
 -: Not analyzed.
 DUP: Duplicate Sample

**Table 3. Summary of Field Parameters in Groundwater
Hobbs Gas Plant
DCP Midstream**

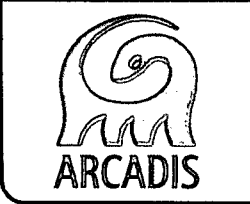
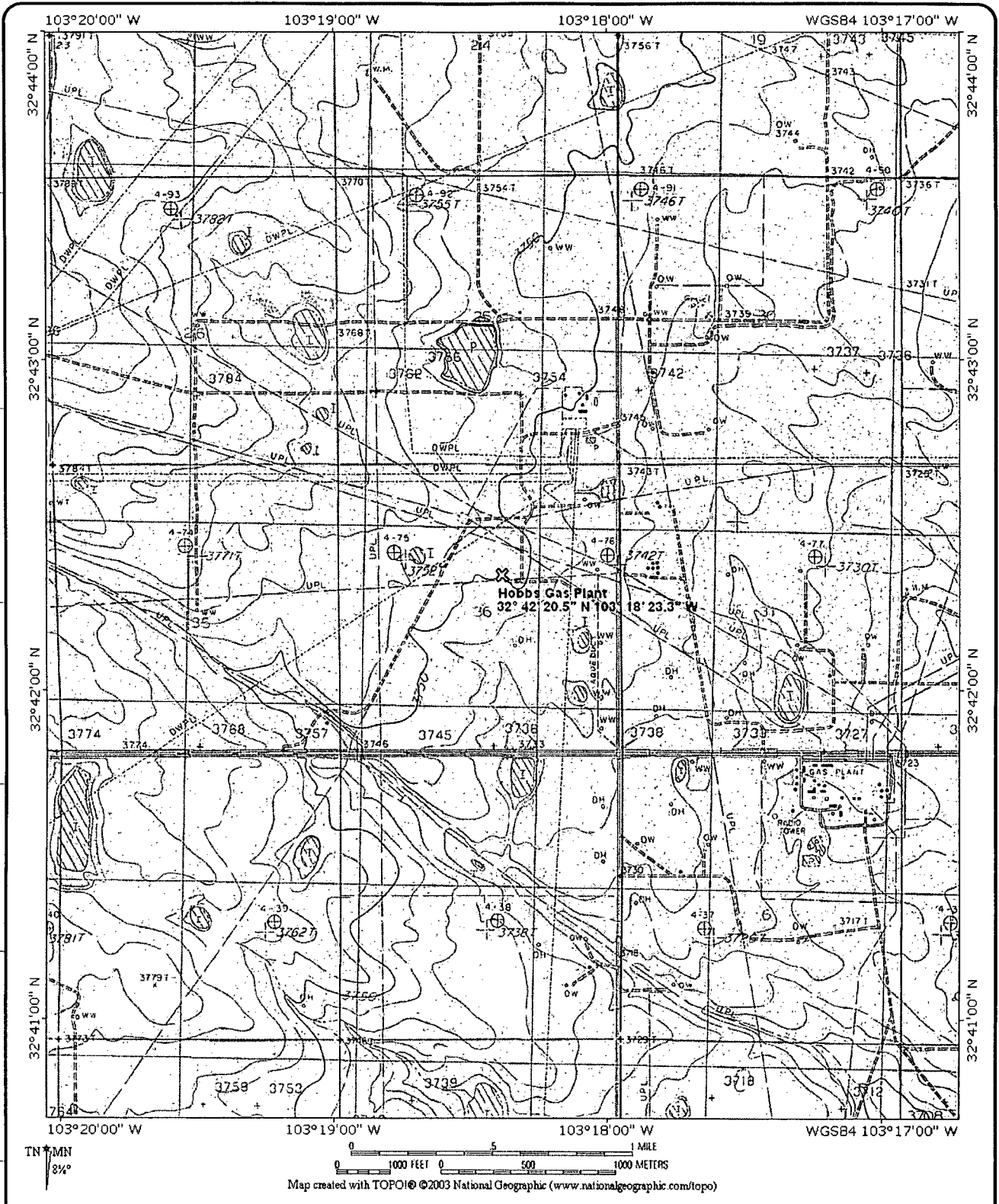
| Well ID | Sample Date | pH (s.u.) | Conductivity (uS/cm) | Temperature (°C) | Dissolved Oxygen (g/L) | ORP (mV) |
|------------|-------------|--------------|-------------------------|---------------------|---------------------------|-------------|
| MWA | 12/13/2007 | 7.23 | 614 | 18.37 | 7.01 | -8.6 |
| | 9/18/2007 | 7.13 | 495 | 19.89 | 4.79 | 5.9 |
| | 6/21/2007 | 7.30 | 565 | 19.46 | 5.45 | 28.7 |
| | 3/28/2007 | 7.71 | 594 | 18.93 | 10.04 | 223.7 |
| | 11/14/2006 | 7.10 | 433 | 18.92 | 7.60 | 44.4 |
| | 8/14/2006 | 5.70 | 578 | 22.42 | 5.70 | 68.7 |
| | 6/14/2006 | 7.38 | 532 | 20.10 | 8.67 | - |
| | 3/23/2006 | 7.37 | 373 | 17.00 | 6.19 | - |
| MWB | 12/13/2007 | 6.85 | 980 | 18.18 | 7.39 | - |
| | 9/18/2007 | 6.74 | 822 | 20.02 | 1.18 | -140.1 |
| | 6/21/2007 | 6.92 | 863 | 19.12 | 3.72 | -127.9 |
| | 3/28/2007 | 6.84 | 1009 | 19.39 | 4.34 | -150.6 |
| | 11/14/2006 | 6.69 | 609 | 18.95 | 7.83 | -198.5 |
| | 8/14/2006 | 6.63 | 753 | 19.85 | 1.41 | -140.6 |
| | 6/15/2006 | 7.02 | 809 | 19.20 | 3.68 | - |
| | 3/23/2006 | 6.96 | 440 | 19.10 | 1.71 | - |
| MWC | 12/13/2007 | 7.00 | 844 | 17.97 | 10.86 | -106.1 |
| | 9/18/2007 | 6.88 | 625 | 19.17 | 3.8 | -103.6 |
| | 6/21/2007 | 7.02 | 659 | 18.88 | 4.36 | -90.5 |
| | 3/27/2007 | 6.98 | 692 | 18.55 | 4.79 | -95.4 |
| | 11/14/2006 | 6.71 | 483 | 18.49 | 4.31 | -138.6 |
| | 8/14/2006 | 6.71 | 644 | 22.01 | 2.08 | -147.4 |
| | 6/14/2006 | 7.03 | 618 | 20.10 | 4.17 | - |
| | 3/23/2006 | 7.12 | 350 | 19.20 | 4.21 | - |
| MWD | 12/13/2007 | 7.00 | 714 | 18.30 | 10.41 | 5.43 |
| | 9/18/2007 | 6.79 | 645 | 19.48 | 4.46 | 65.6 |
| | 6/21/2007 | 6.99 | 681 | 19.26 | 6.24 | 54.9 |
| | 3/28/2007 | 6.90 | 777 | 19.16 | 9.8 | 715.4 |
| | 11/14/2006 | 6.73 | 464 | 19.04 | 6.53 | 79.2 |
| | 8/14/2006 | 7.08 | 602 | 20.02 | 7.38 | 109.6 |
| | 6/14/2006 | 6.08 | 722 | 20.10 | 5.36 | - |
| | 3/23/2006 | 6.86 | 426 | 18.50 | 3.88 | - |
| MWE | 12/13/2007 | 7.02 | 778 | 18.02 | 7.28 | 3.5 |
| | 9/18/2007 | 6.92 | 585 | 21.95 | 3.28 | 7.6 |
| | 6/21/2007 | 6.90 | 640 | 19.14 | 3.94 | 20.3 |
| | 3/28/2007 | 7.07 | 667 | 18.96 | 6.44 | 46.9 |
| | 11/14/2006 | 6.83 | 413 | 18.99 | 6.69 | 54.1 |
| | 8/14/2006 | 6.75 | 541 | 20.34 | 7.24 | 101.4 |
| | 6/15/2006 | 7.13 | 543 | 19.42 | 6.43 | - |
| | 3/23/2006 | 7.21 | 347 | 19.70 | 5.04 | - |
| MWF | 12/13/2007 | 6.71 | 1062 | 17.90 | 9.52 | -5.7 |
| | 9/18/2007 | 6.63 | 734 | 18.95 | 3.61 | 207.9 |
| | 6/21/2007 | 6.85 | 849 | 18.56 | 4.64 | 84.7 |
| | 3/27/2007 | 6.84 | 833 | 18.44 | 4.61 | 177.0 |
| | 11/14/2006 | 6.52 | 544 | 18.16 | 4.50 | 178.2 |
| | 8/14/2006 | 6.65 | 846 | 19.95 | 2.45 | 123.7 |
| | 6/14/2006 | 6.81 | 855 | 21.70 | 5.52 | - |
| | 3/23/2006 | 6.82 | 517 | 19.40 | 2.12 | - |
| SupplyWell | 8/14/2006 | 7.47 | 0.473 | 20.91 | 4.61 | 31.7 |

Notes:
 ORP: Oxidation reduction potential
 s.u.: Standard unit
 uS/cm: microSiemens per centimeter
 °C: Degree Celsius
 g/L: Grams per liter
 mV: Millivolts

ARCADIS

Figures

DWG DATE: 14/7/07 | PROJECT NO.: CO001041.0003 | HARD FILE | DRAWING: COSLM-0047 | CHECKED: TE | APPROVED: GN | DRAFTER: PMW

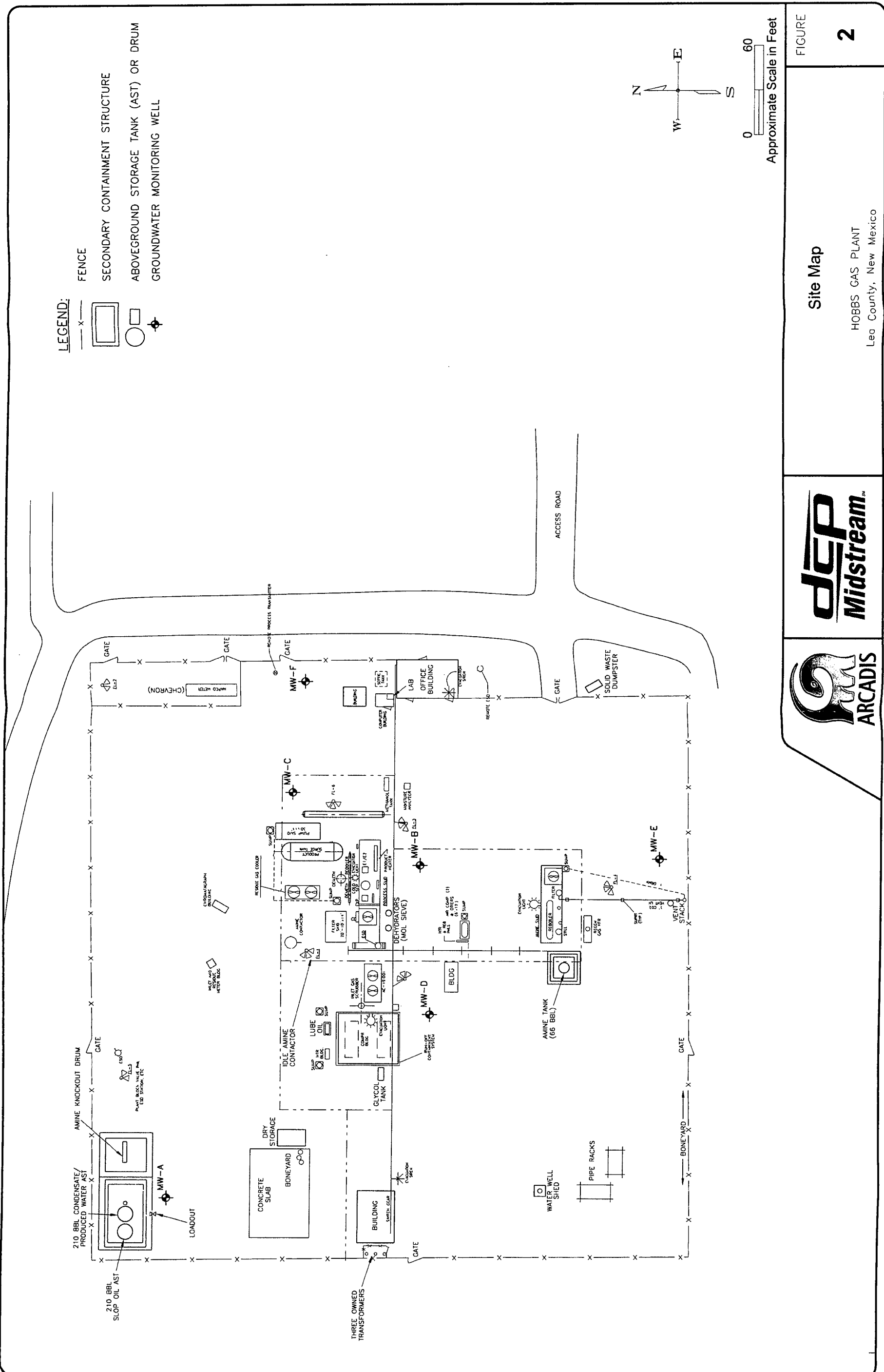


Site Location Map

 HOBBS GAS PLANT
 Lea County, New Mexico

FIGURE

1

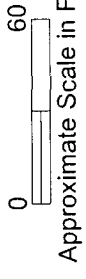
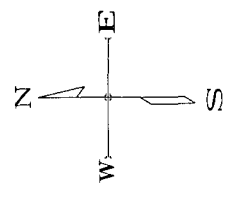
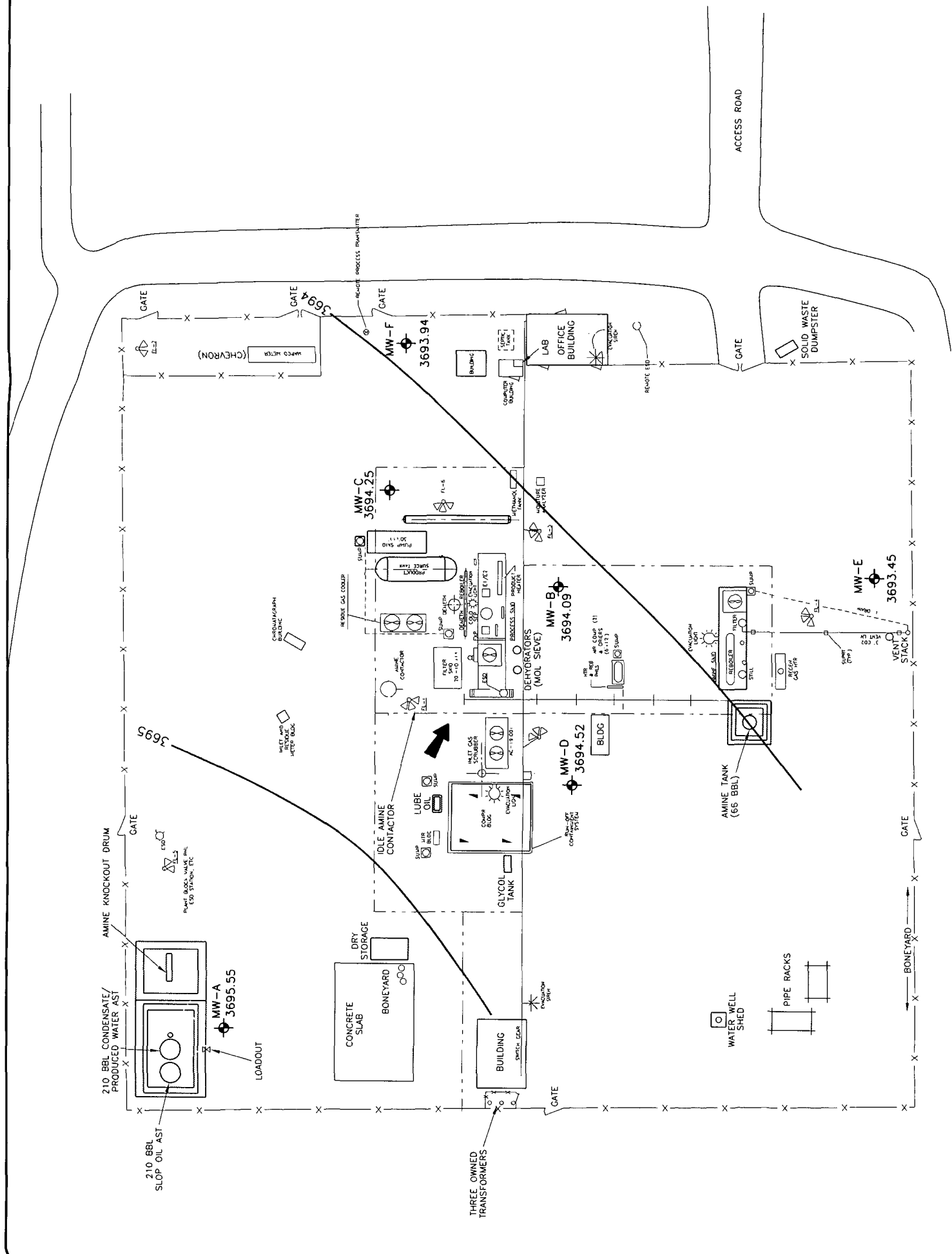


Site Map
 HOBBS GAS PLANT
 Lea County, New Mexico

FIGURE
2

LEGEND:

- FENCE
- SECONDARY CONTAINMENT STRUCTURE
- ABOVEGROUND STORAGE TANK (AST) OR DRUM
- GROUNDWATER MONITORING WELL
- 3693.94
- GROUNDWATER ELEVATION, FEET
- GROUNDWATER CONTOUR, FEET
- GROUNDWATER FLOW DIRECTION



Groundwater Potentiometric Surface Map
December 13, 2007

HOBBS GAS PLANT
Leo County, New Mexico

FIGURE

3

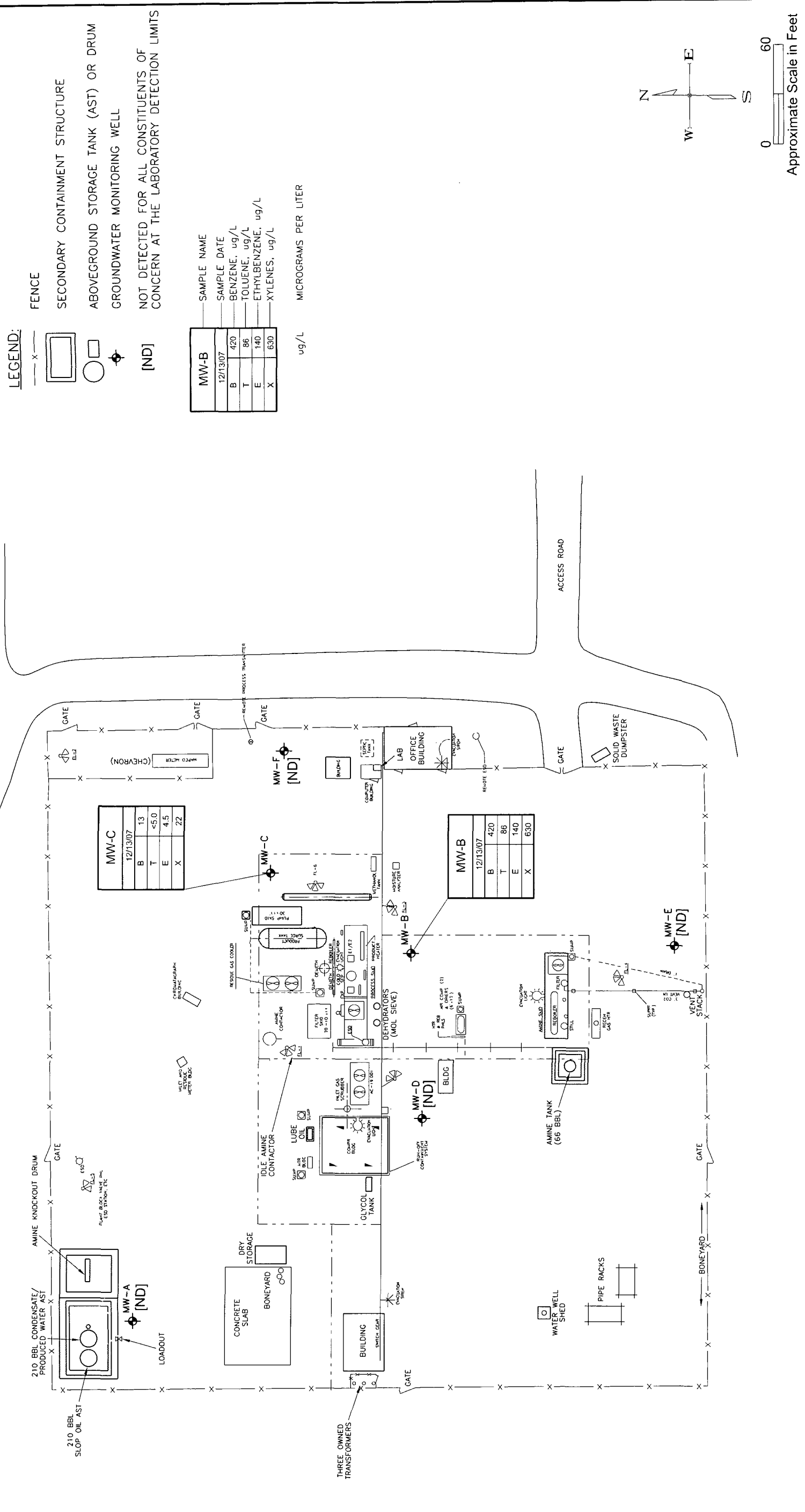
DRAWING: COWF-0696

CHECKED: PS

APPROVED: CN

DWG DATE: 12/27/07 PRCT NO.: C001041.0003

DRAFT: MTH



Groundwater Sample Results
 December 2007
 HOBBS GAS PLANT
 Lea County, New Mexico

Appendix A

Laboratory Analytical Report



ENVIRONMENTAL
SCIENCE CORP.

12065 Lebanon Rd.
Mt. Juliet, TN 37122
(615) 758-5858
1-800-767-5859
Fax (615) 758-5859

Tax I.D. 62-0814289

Est. 1970

Paul Schwarzweller
Arcadis-US, Inc. - Highlands Ranch CO
630 Plaza Dr Ste 200

Highlands Ranch, CO 80129-2379

Report Summary

Wednesday December 19, 2007

Report Number: L324008

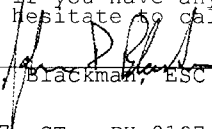
Samples Received: 12/14/07

Client Project: CO 01041.

Description: Hobbs Gas Plant

The analytical results in this report are based upon information supplied by you, the client, and are for your exclusive use. If you have any questions regarding this data package, please do not hesitate to call.

Entire Report Reviewed By:


John D. Blackman, ESC Representative

Laboratory Certification Numbers

A2LA - 1461-01, AIHA - 09227, AL - 40660, CA - I-2327, CT - PH-0197, FL - E87487
GA - 923, IN - C-TN-01, KY - 90010, KYUST - 0016, NC - ENV375, DW21704, ND - R-140
NJ - TN002, SC - 84004, TN - 2006, VA - 00109, WV - 233
AZ - 0612, MN - 047-999-395, NY - 11742, WI - 998093910

This report may not be reproduced, except in full, without written approval from Environmental Science Corp.

8 Samples Reported: 12/19/07 13:03 Revised: 12/19/07 19:15

Page 1 of 9



ENVIRONMENTAL
SCIENCE CORP.

12065 Lebanon Rd.
Mt. Juliet, TN 37122
(615) 758-5858
1-800-767-5859
Fax (615) 758-5859

Tax I.D. 62-0814289

Est. 1970

REPORT OF ANALYSIS

December 19, 2007

Paul Schwarzweller
Arcadis-US, Inc. - Highlands Ranch
630 Plaza Dr Ste 200
Highlands Ranch, CO 80129-2379

Date Received : December 14, 2007
Description : Hobbs Gas Plant

Sample ID : HOBBCP-MW-A

Collected By :
Collection Date : 12/13/07 11:41

ESC Sample # : L324008-01

Site ID :

Project # : CO 01041.

| Parameter | Result | Det. Limit | Units | Qual | Method | Date | Dil. |
|----------------------|--------|------------|--------|------|--------|---------------|------|
| Benzene | BDL | 0.0010 | mg/l | | 8260B | 12/17/07 0806 | 1 |
| Toluene | BDL | 0.0050 | mg/l | | 8260B | 12/17/07 0806 | 1 |
| Ethylbenzene | BDL | 0.0010 | mg/l | | 8260B | 12/17/07 0806 | 1 |
| Total Xylenes | BDL | 0.0030 | mg/l | | 8260B | 12/17/07 0806 | 1 |
| Surrogate Recovery | | | | | | | |
| Toluene-d8 | 108. | | % Rec. | | 8260B | 12/17/07 0806 | 1 |
| Dibromofluoromethane | 112. | | % Rec. | | 8260B | 12/17/07 0806 | 1 |
| 4-Bromofluorobenzene | 98.3 | | % Rec. | | 8260B | 12/17/07 0806 | 1 |

BDL - Below Detection Limit

Det. Limit - Practical Quantitation Limit(PQL)

Laboratory Certification Numbers:

AIHA - 100789, AL - 40660, CA - I-2327, CT- PH-0197, FL - E87487, GA - 923, IN - C-TN-01
KY - 90010, KYUST - 0016, NC - ENV375, DW21704, ND - R-140, SC - 84004, TN - 2006, VA - 00109, WV - 233
AZ -0612, MN - 047-999-395, NY - 11742, NJ - TN002, WI - 998093910

Note:

The reported analytical results relate only to the sample submitted.

This report shall not be reproduced, except in full, without the written approval from ESC.

Reported: 12/19/07 13:03 Revised: 12/19/07 19:16



ENVIRONMENTAL
SCIENCE CORP.

12065 Lebanon Rd.
Mt. Juliet, TN 37122
(615) 758-5858
1-800-767-5859
Fax (615) 758-5859

Tax I.D. 62-0814289

Est. 1970

REPORT OF ANALYSIS

Paul Schwarzweiler
Arcadis-US, Inc. - Highlands Ranch
630 Plaza Dr Ste 200
Highlands Ranch, CO 80129-2379

December 19, 2007

Date Received : December 14, 2007
Description : Hobbs Gas Plant

ESC Sample # : L324008-02

Sample ID : HOBGBP-MW-B

Site ID :

Collected By :
Collection Date : 12/13/07 13:13

Project # : CO 01041.

| Parameter | Result | Det. Limit | Units | Qual | Method | Date | Dil. |
|----------------------|--------|------------|--------|------|--------|---------------|------|
| Benzene | 0.42 | 0.010 | mg/l | | 8260B | 12/19/07 0003 | 10 |
| Toluene | 0.086 | 0.0050 | mg/l | | 8260B | 12/17/07 0826 | 1 |
| Ethylbenzene | 0.14 | 0.0010 | mg/l | | 8260B | 12/17/07 0826 | 1 |
| Total Xylenes | 0.63 | 0.030 | mg/l | | 8260B | 12/19/07 0003 | 10 |
| Surrogate Recovery | | | | | | | |
| Toluene-d8 | 111. | | % Rec. | | 8260B | 12/17/07 0826 | 1 |
| Dibromofluoromethane | 106. | | % Rec. | | 8260B | 12/17/07 0826 | 1 |
| 4-Bromofluorobenzene | 102. | | % Rec. | | 8260B | 12/17/07 0826 | 1 |

BDL - Below Detection Limit
Det. Limit - Practical Quantitation Limit(PQL)

Laboratory Certification Numbers:
AIHA - 100789, AL - 40660, CA - I-2327, CT- PH-0197, FL - E87487, GA - 923, IN - C-TN-01
KY - 90010, KYUST - 0016, NC - ENV375, DW21704, ND - R-140, SC - 84004, TN - 2006, VA - 00109, WV - 233
AZ -0612, MN - 047-999-395, NY - 11742, NJ - TN002, WI - 998093910

Note:
The reported analytical results relate only to the sample submitted.
This report shall not be reproduced, except in full, without the written approval from ESC.

Reported: 12/19/07 13:03 Revised: 12/19/07 19:16



ENVIRONMENTAL
SCIENCE CORP.

12065 Lebanon Rd.
Mt. Juliet, TN 37122
(615) 758-5858
1-800-767-5859
Fax (615) 758-5859
Tax I.D. 62-0814289
Est. 1970

REPORT OF ANALYSIS

Paul Schwarzweller
Arcadis-US, Inc. - Highlands Ranch
630 Plaza Dr Ste 200
Highlands Ranch, CO 80129-2379

December 19, 2007

Date Received : December 14, 2007
Description : Hobbs Gas Plant
Sample ID : HOBGGP-MW-C
Collected By :
Collection Date : 12/13/07 11:05

ESC Sample # : L324008-03
Site ID :
Project # : CO 01041.

| Parameter | Result | Det. Limit | Units | Qual | Method | Date | Dil. |
|----------------------|--------|------------|--------|------|--------|---------------|------|
| Benzene | 0.013 | 0.0010 | mg/l | | 8260B | 12/17/07 0846 | 1 |
| Toluene | BDL | 0.0050 | mg/l | | 8260B | 12/17/07 0846 | 1 |
| Ethylbenzene | 0.0045 | 0.0010 | mg/l | | 8260B | 12/17/07 0846 | 1 |
| Total Xylenes | 0.022 | 0.0030 | mg/l | | 8260B | 12/17/07 0846 | 1 |
| Surrogate Recovery | | | | | | | |
| Toluene-d8 | 109. | | % Rec. | | 8260B | 12/17/07 0846 | 1 |
| Dibromofluoromethane | 109. | | % Rec. | | 8260B | 12/17/07 0846 | 1 |
| 4-Bromofluorobenzene | 101. | | % Rec. | | 8260B | 12/17/07 0846 | 1 |

BDL - Below Detection Limit

Det. Limit - Practical Quantitation Limit (PQL)

Laboratory Certification Numbers:

AIHA - 100789, AL - 40660, CA - I-2327, CT- PH-0197, FL - E87487, GA - 923, IN - C-TN-01
KY - 90010, KYUST - 0016, NC - ENV375, DW21704, ND - R-140, SC - 84004, TN - 2006, VA - 00109, WV - 233
AZ - 0612, MN - 047-999-395, NY - 11742, NJ - TN002, WI - 998093910

Note:

The reported analytical results relate only to the sample submitted.

This report shall not be reproduced, except in full, without the written approval from ESC.

Reported: 12/19/07 13:03 Revised: 12/19/07 19:16



ENVIRONMENTAL
SCIENCE CORP.

12065 Lebanon Rd.
Mt. Juliet, TN 37122
(615) 758-5858
1-800-767-5859
Fax (615) 758-5859
Tax I.D. 62-0814289
Est. 1970

REPORT OF ANALYSIS

Paul Schwarzweller
Arcadis-US, Inc. - Highlands Ranch
630 Plaza Dr Ste 200
Highlands Ranch, CO 80129-2379

December 19, 2007

Date Received : December 14, 2007
Description : Hobbs Gas Plant
Sample ID : HOBBGP-MW-D
Collected By :
Collection Date : 12/13/07 12:15

ESC Sample # : L324008-04
Site ID :
Project # : CO 01041.

| Parameter | Result | Det. Limit | Units | Qual | Method | Date | Dil. |
|----------------------|--------|------------|--------|------|--------|---------------|------|
| Benzene | BDL | 0.0010 | mg/l | | 8260B | 12/17/07 0906 | 1 |
| Toluene | BDL | 0.0050 | mg/l | | 8260B | 12/17/07 0906 | 1 |
| Ethylbenzene | BDL | 0.0010 | mg/l | | 8260B | 12/17/07 0906 | 1 |
| Total Xylenes | BDL | 0.0030 | mg/l | | 8260B | 12/17/07 0906 | 1 |
| Surrogate Recovery | | | | | | | |
| Toluene-d8 | 108. | | % Rec. | | 8260B | 12/17/07 0906 | 1 |
| Dibromofluoromethane | 109. | | % Rec. | | 8260B | 12/17/07 0906 | 1 |
| 4-Bromofluorobenzene | 101. | | % Rec. | | 8260B | 12/17/07 0906 | 1 |

BDL - Below Detection Limit

Det. Limit - Practical Quantitation Limit (PQL)

Laboratory Certification Numbers:

AIHA - 100789, AL - 40660, CA - I-2327, CT- PH-0197, FL - E87487, GA - 923, IN - C-TN-01
KY - 90010, KYUST - 0016, NC - ENV375, DW21704, ND - R-140, SC - 84004, TN - 2006, VA - 00109, WV - 233
AZ - 0612, MN - 047-999-395, NY - 11742, NJ - TN002, WI - 998093910

Note:

The reported analytical results relate only to the sample submitted.

This report shall not be reproduced, except in full, without the written approval from ESC.

Reported: 12/19/07 13:03 Revised: 12/19/07 19:16



ENVIRONMENTAL
SCIENCE CORP.

12065 Lebanon Rd.
Mt. Juliet, TN 37122
(615) 758-5858
1-800-767-5859
Fax (615) 758-5859
Tax I.D. 62-0814289
Est. 1970

REPORT OF ANALYSIS

Paul Schwarzweller
Arcadis-US, Inc. - Highlands Ranch
630 Plaza Dr Ste 200
Highlands Ranch, CO 80129-2379

December 19, 2007

Date Received : December 14, 2007
Description : Hobbs Gas Plant
Sample ID : HOBBGP-MW-E
Collected By :
Collection Date : 12/13/07 12:47

ESC Sample # : L324008-05

Site ID :

Project # : CO 01041.

| Parameter | Result | Det. Limit | Units | Qual | Method | Date | Dil. |
|----------------------|--------|------------|--------|------|--------|---------------|------|
| Benzene | BDL | 0.0010 | mg/l | | 8260B | 12/17/07 0926 | 1 |
| Toluene | BDL | 0.0050 | mg/l | | 8260B | 12/17/07 0926 | 1 |
| Ethylbenzene | BDL | 0.0010 | mg/l | | 8260B | 12/17/07 0926 | 1 |
| Total Xylenes | BDL | 0.0030 | mg/l | | 8260B | 12/17/07 0926 | 1 |
| Surrogate Recovery | | | | | | | |
| Toluene-d8 | 109. | | % Rec. | | 8260B | 12/17/07 0926 | 1 |
| Dibromofluoromethane | 112. | | % Rec. | | 8260B | 12/17/07 0926 | 1 |
| 4-Bromofluorobenzene | 99.5 | | % Rec. | | 8260B | 12/17/07 0926 | 1 |

BDL - Below Detection Limit

Det. Limit - Practical Quantitation Limit(PQL)

Laboratory Certification Numbers:

AIHA - 100789, AL - 40660, CA - I-2327, CT- PH-0197, FL - E87487, GA - 923, IN - C-TN-01
KY - 90010, KYUST - 0016, NC - ENV375,DW21704, ND - R-140, SC - 84004, TN - 2006, VA - 00109, WV - 233
AZ -0612, MN - 047-999-395, NY - 11742, NJ - TN002, WI - 998093910

Note:

The reported analytical results relate only to the sample submitted.

This report shall not be reproduced, except in full, without the written approval from ESC.

Reported: 12/19/07 13:03 Revised: 12/19/07 19:16



ENVIRONMENTAL
SCIENCE CORP.

12065 Lebanon Rd.
Mt. Juliet, TN 37122
(615) 758-5858
1-800-767-5859
Fax (615) 758-5859

Tax I.D. 62-0814289

Est. 1970

REPORT OF ANALYSIS

Paul Schwarzweller
Arcadis-US, Inc. - Highlands Ranch
630 Plaza Dr Ste 200
Highlands Ranch, CO 80129-2379

December 19, 2007

Date Received : December 14, 2007
Description : Hobbs Gas Plant
Sample ID : HOBBGP-MW-F
Collected By :
Collection Date : 12/13/07 10:37

ESC Sample # : L324008-06

Site ID :

Project # : CO 01041.

| Parameter | Result | Det. Limit | Units | Qual | Method | Date | Dil. |
|----------------------|--------|------------|--------|------|--------|---------------|------|
| Benzene | BDL | 0.0010 | mg/l | | 8260B | 12/17/07 0946 | 1 |
| Toluene | BDL | 0.0050 | mg/l | | 8260B | 12/17/07 0946 | 1 |
| Ethylbenzene | BDL | 0.0010 | mg/l | | 8260B | 12/17/07 0946 | 1 |
| Total Xylenes | BDL | 0.0030 | mg/l | | 8260B | 12/17/07 0946 | 1 |
| Surrogate Recovery | | | | | | | |
| Toluene-d8 | 107. | | % Rec. | | 8260B | 12/17/07 0946 | 1 |
| Dibromofluoromethane | 111. | | % Rec. | | 8260B | 12/17/07 0946 | 1 |
| 4-Bromofluorobenzene | 99.5 | | % Rec. | | 8260B | 12/17/07 0946 | 1 |

BDL - Below Detection Limit

Det. Limit - Practical Quantitation Limit(PQL)

Laboratory Certification Numbers:

AIHA - 100789, AL - 40660, CA - I-2327, CT- PH-0197, FL - E87487, GA - 923, IN - C-TN-01
KY - 90010, KYUST - 0016, NC - ENV375, DW21704, ND - R-140, SC - 84004, TN - 2006, VA - 00109, WV - 233
AZ -0612, MN - 047-999-395, NY - 11742, NJ - TN002, WI - 998093910

Note:

The reported analytical results relate only to the sample submitted.

This report shall not be reproduced, except in full, without the written approval from ESC.

Reported: 12/19/07 13:03 Revised: 12/19/07 19:16



ENVIRONMENTAL
SCIENCE CORP.

12065 Lebanon Rd.
Mt. Juliet, TN 37122
(615) 758-5858
1-800-767-5859
Fax (615) 758-5859

Tax I.D. 62-0814289

Est. 1970

REPORT OF ANALYSIS

Paul Schwarzweller
Arcadis-US, Inc. - Highlands Ranch
630 Plaza Dr Ste 200
Highlands Ranch, CO 80129-2379

December 19, 2007

Date Received : December 14, 2007
Description : Hobbs Gas Plant

ESC Sample # : L324008-07

Sample ID : HOBGGP-DUP

Site ID :

Collected By :
Collection Date : 12/13/07 00:00

Project # : CO 01041.

| Parameter | Result | Det. Limit | Units | Qual | Method | Date | Dil. |
|----------------------|--------|------------|--------|------|--------|---------------|------|
| Benzene | 0.017 | 0.0010 | mg/l | | 8260B | 12/17/07 1006 | 1 |
| Toluene | BDL | 0.0050 | mg/l | | 8260B | 12/17/07 1006 | 1 |
| Ethylbenzene | 0.0058 | 0.0010 | mg/l | | 8260B | 12/17/07 1006 | 1 |
| Total Xylenes | 0.025 | 0.0030 | mg/l | | 8260B | 12/17/07 1006 | 1 |
| Surrogate Recovery | | | | | | | |
| Toluene-d8 | 108. | | % Rec. | | 8260B | 12/17/07 1006 | 1 |
| Dibromofluoromethane | 111. | | % Rec. | | 8260B | 12/17/07 1006 | 1 |
| 4-Bromofluorobenzene | 99.8 | | % Rec. | | 8260B | 12/17/07 1006 | 1 |

BDL - Below Detection Limit

Det. Limit - Practical Quantitation Limit (PQL)

Laboratory Certification Numbers:

AIHA - 100789, AL - 40660, CA - I-2327, CT- PH-0197, FL - E87487, GA - 923, IN - C-TN-01
KY - 90010, KYUST - 0016, NC - ENV375, DW21704, ND - R-140, SC - 84004, TN - 2006, VA - 00109, WV - 233
AZ -0612, MN - 047-999-395, NY - 11742, NJ - TN002, WI - 998093910

Note:

The reported analytical results relate only to the sample submitted.

This report shall not be reproduced, except in full, without the written approval from ESC.

Reported: 12/19/07 13:03 Revised: 12/19/07 19:16



ENVIRONMENTAL
SCIENCE CORP.

12065 Lebanon Rd.
Mt. Juliet, TN 37122
(615) 758-5858
1-800-767-5859
Fax (615) 758-5859
Tax I.D. 62-0814289
Est. 1970

REPORT OF ANALYSIS

Paul Schwarzweller
Arcadis-US, Inc. - Highlands Ranch
630 Plaza Dr Ste 200
Highlands Ranch, CO 80129-2379

December 19, 2007

Date Received : December 14, 2007
Description : Hobbs Gas Plant
Sample ID : HOBGGP-TRIP BLANK
Collected By :
Collection Date : 12/13/07 00:00

ESC Sample # : L324008-08
Site ID :
Project # : CO 01041.

| Parameter | Result | Det. Limit | Units | Qual | Method | Date | Dil. |
|----------------------|--------|------------|--------|------|--------|---------------|------|
| Benzene | BDL | 0.0010 | mg/l | | 8260B | 12/17/07 1026 | 1 |
| Toluene | BDL | 0.0050 | mg/l | | 8260B | 12/17/07 1026 | 1 |
| Ethylbenzene | BDL | 0.0010 | mg/l | | 8260B | 12/17/07 1026 | 1 |
| Total Xylenes | BDL | 0.0030 | mg/l | | 8260B | 12/17/07 1026 | 1 |
| Surrogate Recovery | | | | | | | |
| Toluene-d8 | 108. | | % Rec. | | 8260B | 12/17/07 1026 | 1 |
| Dibromofluoromethane | 111. | | % Rec. | | 8260B | 12/17/07 1026 | 1 |
| 4-Bromofluorobenzene | 100. | | % Rec. | | 8260B | 12/17/07 1026 | 1 |

BDL - Below Detection Limit

Det. Limit - Practical Quantitation Limit (PQL)

Laboratory Certification Numbers:

AIHA - 100789, AL - 40660, CA - I-2327, CT- PH-0197, FL - E87487, GA - 923, IN - C-TN-01
KY - 90010, KYUST - 0016, NC - ENV375, DW21704, ND - R-140, SC - 84004, TN - 2006, VA - 00109, WV - 233
AZ -0612, MN - 047-999-395, NY - 11742, NJ - TN002, WI - 998093910

Note:

The reported analytical results relate only to the sample submitted.

This report shall not be reproduced, except in full, without the written approval from ESC.

Reported: 12/19/07 13:03 Revised: 12/19/07 19:16

Summary of Remarks For Samples Printed
12/19/07 at 19:16:11

TSR Signing Reports: 151
R5 - Desired TAT

No E Qual - Use only TSR created projects
Quals on report - design=DEFAULT4; ARCADIS EDD and QC2 on all; Prefix sample IDs with HOBBS-

Sample: L324008-01 Account: DUKARCAD Received: 12/14/07 09:00 Due Date: 12/21/07 00:00 RPT Date: 12/19/07 13:03
Sample: L324008-02 Account: DUKARCAD Received: 12/14/07 09:00 Due Date: 12/21/07 00:00 RPT Date: 12/19/07 13:03
Sample: L324008-03 Account: DUKARCAD Received: 12/14/07 09:00 Due Date: 12/21/07 00:00 RPT Date: 12/19/07 13:03
Sample: L324008-04 Account: DUKARCAD Received: 12/14/07 09:00 Due Date: 12/21/07 00:00 RPT Date: 12/19/07 13:03
Sample: L324008-05 Account: DUKARCAD Received: 12/14/07 09:00 Due Date: 12/21/07 00:00 RPT Date: 12/19/07 13:03
Sample: L324008-06 Account: DUKARCAD Received: 12/14/07 09:00 Due Date: 12/21/07 00:00 RPT Date: 12/19/07 13:03
Sample: L324008-07 Account: DUKARCAD Received: 12/14/07 09:00 Due Date: 12/21/07 00:00 RPT Date: 12/19/07 13:03
Sample: L324008-08 Account: DUKARCAD Received: 12/14/07 09:00 Due Date: 12/21/07 00:00 RPT Date: 12/19/07 13:03

Arcadis-US, Inc. - Highlands Ranch CO
 630 Plaza Dr Ste 200
 Highlands Ranch, CO 80129-2379

Report to: **Paul Schwarzweller** Email: **mdupre@arcadis-us.com, sw**
 Project Description: **Hobbs Gas Plant** City/State Collected: _____
 Client Project #: _____ Lab Project #: **DUKARCAD-HOBBS**
 Phone: (720) 344-3500 CO 01041
 FAX: (720) 344-3535 Site/Facility ID#: _____ P.O.#: _____
 Collected by (print): _____

Collected by (signature): _____
 Immediately packed on ice N Y
 Rush? (Lab MUST Be Notified)
 Same Day 200%
 Next Day 100%
 Two Day 50%
 Three Day 25%

| Sample ID | Comp/Grab | Matrix* | Depth | Date | Time | No. of Cntrs |
|-------------------|-----------|---------|-------|----------|------|--------------|
| HOBBGP-MW-A | GW | GW | | 12/13/07 | 1141 | 3 |
| HOBBGP-MW-B | GW | GW | | | 1313 | 3 |
| HOBBGP-MW-C | GW | GW | | | 1105 | 3 |
| HOBBGP-MW-D | GW | GW | | | 1215 | 3 |
| HOBBGP-MW-E | GW | GW | | | 1247 | 3 |
| HOBBGP-MW-F | GW | GW | | | 1037 | 3 |
| HOBBGP-DUP | GW | GW | | | | 3 |
| HOBBGP-TRIP BLANK | GW | GW | | | | 1 |

Alternate billing information:

Analysis/Container/Preservative

V8260BTEX 40mlamb-HCI
 V8260BTEX 40mlamb-HCI-BIK

Chain of Custody
 Page ___ of ___

Prepared by: **ENVIRONMENTAL SCIENCE CORP.**
 12065 Lebanon Road
 Mt. Juliet, TN 37122
 Phone (800) 767-5859
 FAX (615) 758-5859

Account: **DUKARCAD** (lab use only)
 Template/Region: **T34818/P229813**
 Cooler #: **1210 MMS**
 Shipped Via: **FedEX Standard**

Remarks/Contaminant Sample # (lab only)
1324008-91
02
03
04
05
06
07
08

*Matrix: **SS - Soil** **GW - Groundwater** **WW - Waste/Water** **DW - Drinking Water** **OT - Other**

pH _____ Temp _____
 Flow _____ Other _____

94467871 5840

| Relinquished by (Signature) | Date: | Time: | Received by (Signature) | Date: | Time: | Samples returned via: | Condition: |
|-----------------------------|-------|-------|-------------------------|-------|-------|---|---|
| | | | | | | <input type="checkbox"/> UPS <input type="checkbox"/> FedEx <input type="checkbox"/> Counter | OK |
| | | | | | | Term: 3.8 Bottles Received Date: 12-14-07 Time: 09:20 | COC Seal Intact: X pH Checked: NOF |
| | | | | | | | |