

ABOVE THIS LINE FOR DIVISION USE ONLY

NEW MEXICO OIL CONSERVATION DIVISION
 - Engineering Bureau -
 1220 South St. Francis Drive, Santa Fe, NM 87505



Chevron USA
skelly Unit #972

ADMINISTRATIVE APPLICATION CHECKLIST

THIS CHECKLIST IS MANDATORY FOR ALL ADMINISTRATIVE APPLICATIONS FOR EXCEPTIONS TO DIVISION RULES AND REGULATIONS WHICH REQUIRE PROCESSING AT THE DIVISION LEVEL IN SANTA FE

Application Acronyms:

- [NSL-Non-Standard Location] [NSP-Non-Standard Proration Unit] [SD-Simultaneous Dedication]**
- [DHC-Downhole Commingling] [CTB-Lease Commingling] [PLC-Pool/Lease Commingling]**
- [PC-Pool Commingling] [OLS - Off-Lease Storage] [OLM-Off-Lease Measurement]**
- [WFX-Waterflood Expansion] [PMX-Pressure Maintenance Expansion]**
- [SWD-Salt Water Disposal] [IPI-Injection Pressure Increase]**
- [EOR-Qualified Enhanced Oil Recovery Certification] [PPR-Positive Production Response]**

- [1] **TYPE OF APPLICATION** - Check Those Which Apply for [A]
- [A] Location - Spacing Unit - Simultaneous Dedication
 NSL NSP SD
- Check One Only for [B] or [C]
- [B] Commingling - Storage - Measurement
 DHC CTB PLC PC OLS OLM
- [C] Injection - Disposal - Pressure Increase - Enhanced Oil Recovery
 WFX PMX SWD IPI EOR PPR
- [D] Other: Specify _____

RECEIVED
 2008 JAN 8 AM 11:12

- [2] **NOTIFICATION REQUIRED TO:** - Check Those Which Apply, or Does Not Apply
- [A] Working, Royalty or Overriding Royalty Interest Owners
- [B] Offset Operators, Leaseholders or Surface Owner
- [C] Application is One Which Requires Published Legal Notice
- [D] Notification and/or Concurrent Approval by BLM or SLO
U.S. Bureau of Land Management - Commissioner of Public Lands, State Land Office
- [E] For all of the above, Proof of Notification or Publication is Attached, and/or,
- [F] Waivers are Attached

[3] **SUBMIT ACCURATE AND COMPLETE INFORMATION REQUIRED TO PROCESS THE TYPE OF APPLICATION INDICATED ABOVE.**

[4] **CERTIFICATION:** I hereby certify that the information submitted with this application for administrative approval is **accurate** and **complete** to the best of my knowledge. I also understand that **no action** will be taken on this application until the required information and notifications are submitted to the Division.

Note: Statement must be completed by an individual with managerial and/or supervisory capacity.

PHYLLIS A. EDWARDS _____
 Print or Type Name Signature Title Agent for Chevron USA Inc. Date 1/7/09

 pedwards@conchoresources.com
 e-mail Address

**Skelly Unit #972
Eddy County, NM**

Fren; Glorieta Yeso oil well
TD of approximately 6400'
Non-standard location
480' FNL & 1450' FWL Sec 21, T17S, R31E, Unit C

This well had to be drilled at a non-standard location due to a pipeline & dunes.

The plan for this well is to complete it in the Yeso formation.
We won't know the exact perms until we drill & log it, but it will be similar to the

Willow State #8
330 FSL & 1650 FEL, Section 16, T17S, R31E, UL O
drilled in March 2006

The Willow State #8 Yeso completion has overall perforations from 5380.5' – 5845.5', but is divided into 2 perf/stimulation intervals. At this time, we assume the Skelly Unit 971 will be very similar.

1st Interval: 5650' – 5845.5', 67 total holes.
acidized w/ 2265 gals acid,
frac'd w/ 8000# LiteProp, 30,000 gals 30# gel, 54,663 gals 40# gel, & 90,560#
16/30 sand

2nd Interval: 5380.5' – 5544', 56 total holes.
acidized w/ 2550 gals acid,
frac'd w/ 8006# LiteProp, 30,000 gals 30# gel, 53,000 gals 40# gel, & 91,740#
16/30 sand

Attachment 1
Plat and map

Attachment 2
Map and legend of offset wells.

Attachment 3
Updated land plat showing that Chevron USA Inc. owns offset acreage.
The acreage we are encroaching on is the NW/4 NW/4 of Section 21.
Interests are common.

COG Operating LLC as agent for Chevron USA Inc. respectfully requests
permission to have this NSL approved.

DISTRICT I
1625 N. French Dr., Hobbs, NM 88240

DISTRICT II
1301 W. Grand Avenue, Artesia, NM 88210

DISTRICT III
1000 Rio Brazos Rd., Aztec, NM 87410

DISTRICT IV
1220 S. St. Francis Dr., Santa Fe, NM 87505

State of New Mexico
Energy, Minerals and Natural Resources Department

Form C-102
Revised October 12, 2005

Submit to Appropriate District Office
State Lease - 4 Copies
Fee Lease - 3 Copies

OIL CONSERVATION DIVISION
1220 South St. Francis Dr.
Santa Fe, New Mexico 87505

AMENDED REPORT

WELL LOCATION AND ACREAGE DEDICATION PLAT

API Number	Pool Code	Pool Name
	26770	FREN; G LORIETA-YESO
Property Code	Property Name	Well Number
29742	SKELLY UNIT	972
OGRID No.	Operator Name	Elevation
4323	CHEVRON USA, INC.	3750'

Surface Location

UL or lot No.	Section	Township	Range	Lot Idn	Feet from the	North/South line	Feet from the	East/West line	County
C	21	17 S	31 E		480	NORTH	1450	WEST	EDDY

Bottom Hole Location If Different From Surface

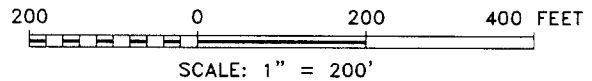
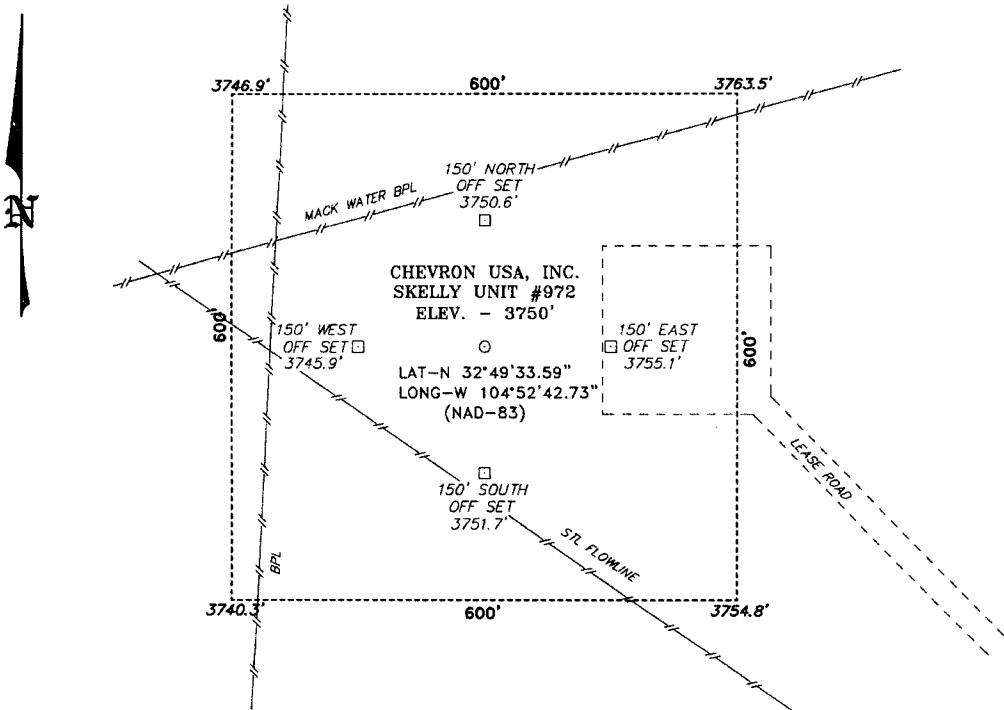
UL or lot No.	Section	Township	Range	Lot Idn	Feet from the	North/South line	Feet from the	East/West line	County

Dedicated Acres	Joint or Infill	Consolidation Code	Order No.
40			

NO ALLOWABLE WILL BE ASSIGNED TO THIS COMPLETION UNTIL ALL INTERESTS HAVE BEEN CONSOLIDATED OR A NON-STANDARD UNIT HAS BEEN APPROVED BY THE DIVISION

	<p>SURFACE LOCATION LAT.: N 32°49'33.59" LONG.: W103°52'42.73" N: 664526.538 E: 681041.562 (NAD-83)</p>	<p>OPERATOR CERTIFICATION</p> <p>I hereby certify that the information contained herein is true and complete to the best of my knowledge and belief, and that this organization either owns a working interest or unleased mineral interest in the land including the proposed bottom hole location pursuant to a contract with an owner of such a mineral or working interest, or to a voluntary pooling agreement or a compulsory pooling order heretofore entered by the division.</p> <p><i>Phyllis A. Edwards</i> 11/108 Signature Date</p> <p>PHYLLIS A. EDWARDS Printed Name REGULATORY ANALYST</p>
		<p>SURVEYOR CERTIFICATION</p> <p>I hereby certify that the well location shown on this plat was plotted from field notes of actual surveys made by me or under my supervision, and that the same is true and correct to the best of my belief.</p> <p>NOVEMBER 25 2007 Date Surveyed</p> <p>Signature & Seal of Professional Surveyor W.O. [Signature] 658</p> <p>Certificate No. Gary L. Jones 7977</p> <p>BASIN SURVEYS</p>

SECTION 21, TOWNSHIP 17 SOUTH, RANGE 31 EAST, N.M.P.M.,
 EDDY COUNTY, NEW MEXICO.



DIRECTIONS TO LOCATION:

FROM MILE MARKER 139 OF US HWY 82, GO WEST
 0.2 MILES TO LEASE ROAD, ON LEASE ROAD GO
 NORTH 1.0 MILES TO PROPOSED LOCATION.

CHEVRON USA, INC.

REF: SKELY UNIT #972 / Well Pad Topo

THE SKELY UNIT #972 LOCATED 480' FROM
 THE NORTH LINE AND 1450' FROM THE WEST LINE OF
 SECTION 21, TOWNSHIP 17 SOUTH, RANGE 31 EAST,
 N.M.P.M., EDDY COUNTY, NEW MEXICO.

BASIN SURVEYS P.O. BOX 1786 - HOBBS, NEW MEXICO

W.O. Number: 18658

Drawn By: J. M. SMALL

Date: 11-27-2007

Disk: JMS 18658W

Survey Date: 11-25-2007

Sheet 1 of 1 Sheets



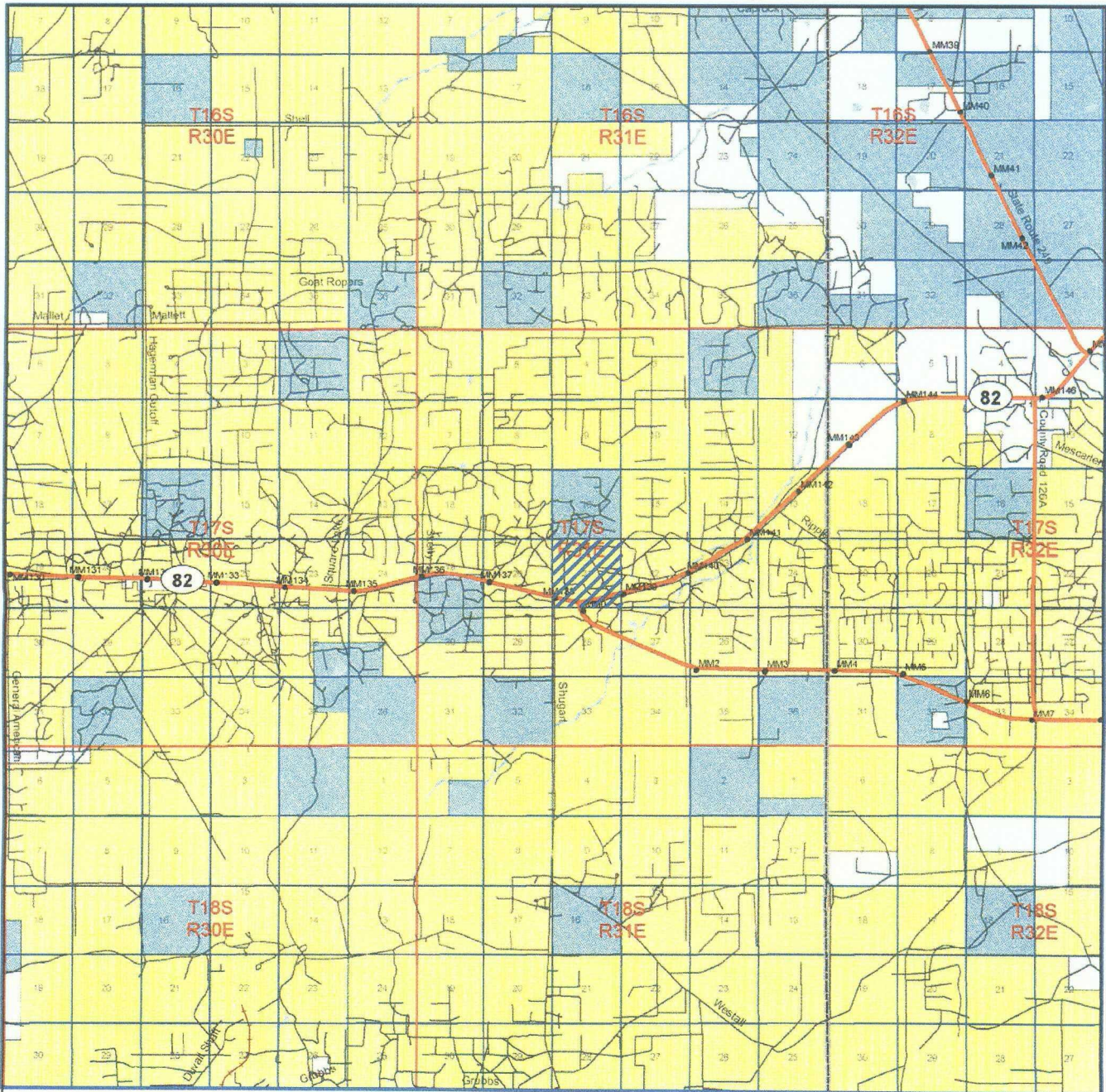
SKELLY UNIT #972
 Located at 480' FNL and 1450' FWL
 Section 21, Township 17 South, Range 31 East,
 N.M.P.M., Eddy County, New Mexico.




P.O. Box 1786
 1120 N. West County Rd.
 Hobbs, New Mexico 88241
 (505) 393-7316 - Office
 (505) 392-3074 - Fax
 basinsurveys.com

W.O. Number:	JMS 18658T
Survey Date:	11-25-2007
Scale:	1" = 2000'
Date:	11-28-2007

**CHEVRON
 USA, INC.**



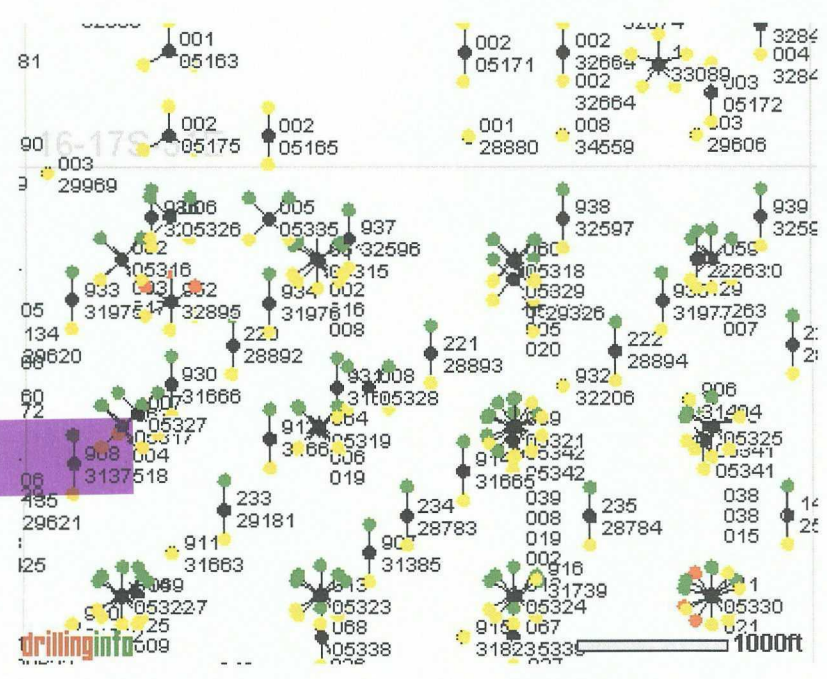
SKELLY UNIT #972
 Located at 480' FNL and 1450' FWL
 Section 21, Township 17 South, Range 31 East,
 N.M.P.M., Eddy County, New Mexico.


Basin surveys
 focused on excellence
 in the oilfield

P.O. Box 1786
 1120 N. West County Rd.
 Hobbs, New Mexico 88241
 (505) 393-7316 - Office
 (505) 392-3074 - Fax
 basinsurveys.com

W.O. Number:	JMS 18658TR
Survey Date:	11-25-2007
Scale:	1" = 2 MILES
Date:	11-28-2007

CHEVRON
USA, INC.



Offset Wells to Skelly Unit #972

API#	Operator	Lease	Well#	County	Legal	First Prod.	Field Name	Reservoir Name	Total Well Depth	Well Status
30-015-05315	FOREST OIL CORP	SKELLY UNIT	061	EDDY	S:21, T:17S, R:31E	Jan 1971	GRAYBURG JACKSON	SR-Q-G-SA	0	Injection Well
30-015-05315	WISER OIL CO (THE)	SKELLY UNIT	061	EDDY	S:21, T:17S, R:31E	Jan 1967	GRAYBURG JKSN SR-Q-G-SA(DO NOT USE)		0	Injection Well
30-015-05316	FOREST OIL CORP	SKELLY UNIT	062	EDDY	S:21, T:17S, R:31E	Jan 1971	GRAYBURG JACKSON	SR-Q-G-SA	0	Injection Well
30-015-05316	WISER OIL CO (THE)	SKELLY UNIT	062	EDDY	S:21, T:17S, R:31E	Jan 1969	GRAYBURG JKSN SR-Q-G-SA(DO NOT USE)		0	Injection Well
30-015-05317	WISER OIL CO (THE)	SKELLY UNIT	063	EDDY	S:21, T:17S, R:31E	Jan 1972	GRAYBURG JKSN SR-Q-G-SA(DO NOT USE)		0	Injection Well
30-015-05317	FOREST OIL CORP	SKELLY UNIT	063	EDDY	S:21, T:17S, R:31E	Jan 1967	GRAYBURG JACKSON	SR-Q-G-SA	0	Injection Well
30-015-05318	WISER OIL CO (THE)	SKELLY UNIT	060	EDDY	S:21, T:17S, R:31E	Jan 1967	GRAYBURG JKSN SR-Q-G-SA(DO NOT USE)		0	Injection Well
30-015-05318	FOREST OIL CORP	SKELLY UNIT	060	EDDY	S:21, T:17S, R:31E	Jan 1969	GRAYBURG JACKSON	SR-Q-G-SA	0	Injection Well
30-015-05319	FOREST OIL CORP	SKELLY UNIT	064	EDDY	S:21, T:17S, R:31E	Jan 2001	GRAYBURG JACKSON	SR-Q-G-SA	0	Injection Well
30-015-05319	WISER OIL CO (THE)	SKELLY UNIT	064	EDDY	S:21, T:17S, R:31E	Jan 1967	GRAYBURG JKSN SR-Q-G-SA(DO NOT USE)		0	Injection Well
30-015-05320	WISER OIL CO (THE)	SKELLY UNIT	059	EDDY	S:21, T:17S, R:31E	Jan 1967	GRAYBURG JKSN SR-Q-G-SA(DO NOT USE)		0	Injection Well
30-015-05320	FOREST OIL CORP	SKELLY UNIT	059	EDDY	S:21, T:17S, R:31E	Jan 1969	GRAYBURG JACKSON	SR-Q-G-SA	0	Injection Well
30-015-05321	WISER OIL CO (THE)	SKELLY UNIT	009	EDDY	S:21, T:17S, R:31E	Jan 1967	GRAYBURG JACKSON	SR-Q-G-SA	0	Pumping
	WISER OIL	SKELLY			S:21,					

30-015-05321	CO (THE)	UNIT	009	EDDY	T:17S, R:31E	Apr 1969	GRAYBURG JKSN SR-Q-G-SA(DO NOT USE)		0	Pumping
30-015-05322	FOREST OIL CORP	SKELLY UNIT	014	EDDY	S:21, T:17S, R:31E	Jan 1967	GRAYBURG JACKSON	SR-Q-G-SA	0	Active
30-015-05322	WISER OIL CO (THE)	SKELLY UNIT	014	EDDY	S:21, T:17S, R:31E	Apr 1969	GRAYBURG JKSN SR-Q-G-SA(DO NOT USE)		0	Active
30-015-05323	WISER OIL CO (THE)	SKELLY UNIT	013	EDDY	S:21, T:17S, R:31E	Jan 1967	GRAYBURG JKSN SR-Q-G-SA(DO NOT USE)		0	Active
30-015-05323	FOREST OIL CORP	SKELLY UNIT	013	EDDY	S:21, T:17S, R:31E	Apr 1969	GRAYBURG JACKSON	SR-Q-G-SA	0	Active
30-015-05324	WISER OIL CO (THE)	SKELLY UNIT	012	EDDY	S:21, T:17S, R:31E	Jan 1967	GRAYBURG JKSN SR-Q-G-SA(DO NOT USE)		0	Active
30-015-05324	FOREST OIL CORP	SKELLY UNIT	012	EDDY	S:21, T:17S, R:31E	Apr 1969	GRAYBURG JACKSON	SR-Q-G-SA	0	Active
30-015-05325	FOREST OIL CORP	SKELLY UNIT	010	EDDY	S:21, T:17S, R:31E	Jan 1967	GRAYBURG JACKSON	SR-Q-G-SA	0	Active
30-015-05325	WISER OIL CO (THE)	SKELLY UNIT	010	EDDY	S:21, T:17S, R:31E	Apr 1969	GRAYBURG JKSN SR-Q-G-SA(DO NOT USE)		0	Active
30-015-05326	FOREST OIL CORP	SKELLY UNIT	006	EDDY	S:21, T:17S, R:31E	Jan 1967	GRAYBURG JACKSON	SR-Q-G-SA	0	Active
30-015-05327	FOREST OIL CORP	SKELLY UNIT	007	EDDY	S:21, T:17S, R:31E	Jan 1967	GRAYBURG JACKSON	SR-Q-G-SA	0	Pumping
30-015-05328	FOREST OIL CORP	SKELLY UNIT	008	EDDY	S:21, T:17S, R:31E	Jan 1967	GRAYBURG JACKSON	SR-Q-G-SA	0	Active
30-015-05329	FOREST OIL CORP	SKELLY UNIT	004	EDDY	S:21, T:17S, R:31E	Jan 1967	GRAYBURG JACKSON	SR-Q-G-SA	0	Active
30-015-05330	FOREST OIL CORP	SKELLY UNIT	011	EDDY	S:21, T:17S, R:31E	Jan 1967	GRAYBURG JACKSON	SR-Q-G-SA	0	Shut-in
30-015-05330	WISER OIL CO (THE)	SKELLY UNIT	011	EDDY	S:21, T:17S, R:31E	Jan 1967	GRAYBURG JKSN SR-Q-G-SA(DO NOT USE)		0	Shut-in
					S:21,					

30-015-05331	WISER OIL CO (THE)	SKELLY UNIT	074	EDDY	T:17S, R:31E	Jan 1967	GRAYBURG JKSN SR-Q-G-SA(DO NOT USE)	0	Injection Well
30-015-05331	FOREST OIL CORP	SKELLY UNIT	074	EDDY	S:21, T:17S, R:31E	Jan 1969	GRAYBURG JACKSON SR-Q-G-SA	0	Injection Well
30-015-05332	FOREST OIL CORP	SKELLY UNIT	015	EDDY	S:21, T:17S, R:31E	Jan 1967	GRAYBURG JACKSON SR-Q-G-SA	0	Pumping
30-015-05333	WISER OIL CO (THE)	SKELLY UNIT	075	EDDY	S:21, T:17S, R:31E	Jan 1967	GRAYBURG JKSN SR-Q-G-SA(DO NOT USE)	0	Injection Well
30-015-05333	FOREST OIL CORP	SKELLY UNIT	075	EDDY	S:21, T:17S, R:31E	Jan 2001	GRAYBURG JACKSON SR-Q-G-SA	0	Injection Well
30-015-05334	FOREST OIL CORP	SKELLY UNIT	016	EDDY	S:21, T:17S, R:31E	Jan 1967	GRAYBURG JACKSON SR-Q-G-SA	0	Active
30-015-05335	FOREST OIL CORP	SKELLY UNIT	005	EDDY	S:21, T:17S, R:31E	Jan 1967	GRAYBURG JACKSON SR-Q-G-SA	0	Pumping
30-015-05337	FOREST OIL CORP	SKELLY UNIT	069	EDDY	S:21, T:17S, R:31E	Jan 1967	GRAYBURG JACKSON SR-Q-G-SA	0	Injection Well
30-015-05338	FOREST OIL CORP	SKELLY UNIT	068	EDDY	S:21, T:17S, R:31E	Jan 1967	GRAYBURG JACKSON SR-Q-G-SA	0	Injection Well
30-015-05339	FOREST OIL CORP	SKELLY UNIT	067	EDDY	S:21, T:17S, R:31E	Jan 1967	GRAYBURG JACKSON SR-Q-G-SA	0	Injection Well
30-015-05340	WISER OIL CO (THE)	SKELLY UNIT	077	EDDY	S:21, T:17S, R:31E	Jan 1967	GRAYBURG JKSN SR-Q-G-SA(DO NOT USE)	0	Injection Well
30-015-05340	FOREST OIL CORP	SKELLY UNIT	077	EDDY	S:21, T:17S, R:31E	Jan 2001	GRAYBURG JACKSON SR-Q-G-SA	0	Injection Well
30-015-05341	FOREST OIL CORP	SKELLY UNIT	066	EDDY	S:21, T:17S, R:31E	Jan 1967	GRAYBURG JACKSON SR-Q-G-SA	0	Injection Well
30-015-05342	FOREST OIL CORP	SKELLY UNIT	065	EDDY	S:21, T:17S, R:31E	Jan 1967	GRAYBURG JACKSON SR-Q-G-SA	99,999	Injection Well
30-015-22263	FOREST OIL CORP	SKELLY UNIT	129	EDDY	S:21, T:17S, R:31E	Jan 1993	GRAYBURG JACKSON SR-Q-G-SA	0	Active

30-015-25037	WISER OIL CO (THE)	SKELLY UNIT	149	EDDY	T:17S, R:31E	Jan 1993	GRAYBURG JACKSON	SR-Q-G-SA	0	Active
30-015-28783	FOREST OIL CORP	SKELLY UNIT	234	EDDY	S:21, T:17S, R:31E	Jun 1996	GRAYBURG JACKSON	SR-Q-G-SA	3,950	Pumping
30-015-28784	FOREST OIL CORP	SKELLY UNIT	235	EDDY	S:21, T:17S, R:31E	Apr 1996	GRAYBURG JACKSON	SR-Q-G-SA	3,950	Pumping
30-015-28788	FOREST OIL CORP	SKELLY UNIT	247	EDDY	S:21, T:17S, R:31E	Jun 1996	GRAYBURG JACKSON	SR-Q-G-SA	3,950	Active
30-015-28789	FOREST OIL CORP	SKELLY UNIT	262	EDDY	S:21, T:17S, R:31E	Jul 1996	GRAYBURG JACKSON	SR-Q-G-SA	3,950	Pumping
30-015-28810	FOREST OIL CORP	SKELLY UNIT	248	EDDY	S:21, T:17S, R:31E	May 1996	GRAYBURG JACKSON	SR-Q-G-SA	3,950	Pumping
30-015-28811	FOREST OIL CORP	SKELLY UNIT	260	EDDY	S:21, T:17S, R:31E	Jun 1996	GRAYBURG JACKSON	SR-Q-G-SA	3,950	Pumping
30-015-28892	FOREST OIL CORP	SKELLY UNIT	220	EDDY	S:21, T:17S, R:31E	Mar 1997	GRAYBURG JACKSON	SR-Q-G-SA	3,800	Pumping
30-015-28893	FOREST OIL CORP	SKELLY UNIT	221	EDDY	S:21, T:17S, R:31E	Dec 1996	GRAYBURG JACKSON	SR-Q-G-SA	3,850	Pumping
30-015-28894	FOREST OIL CORP	SKELLY UNIT	222	EDDY	S:21, T:17S, R:31E	Dec 1996	GRAYBURG JACKSON	SR-Q-G-SA	3,900	Active
30-015-28964	FOREST OIL CORP	SKELLY UNIT	223	EDDY	S:21, T:17S, R:31E	Aug 1996	GRAYBURG JACKSON	SR-Q-G-SA	3,982	Pumping
30-015-29063	FOREST OIL CORP	SKELLY UNIT	246	EDDY	S:21, T:17S, R:31E	Nov 1996	GRAYBURG JACKSON	SR-Q-G-SA	3,950	Pumping
30-015-29181	FOREST OIL CORP	SKELLY UNIT	233	EDDY	S:21, T:17S, R:31E	Jan 1997	GRAYBURG JACKSON	SR-Q-G-SA	3,900	Pumping
30-015-29326	CHEVRON USA, INC.	SKELLY UNIT	901	EDDY	S:21, T:17S, R:31E	Dec 1997	FREN	PADDOCK	9,200	Pumping
30-015-29856	FOREST OIL CORP	SKELLY UNIT	400	EDDY	S:21, T:17S, R:31E	Jan 1998	GRAYBURG JACKSON	SR-Q-G-SA	3,922	Pumping
					S:21,					

30-015-31375	CHEVRON USA, INC.	SKELLY UNIT	908 EDDY	T:17S, R:31E	Jan 2001 FREN	PADDOCK	5,805 Pumping
30-015-31385	CHEVRON USA, INC.	SKELLY UNIT	907 EDDY	S:21, T:17S, R:31E	Feb 2001 FREN	PADDOCK	5,400 Pumping
30-015-31664	CHEVRON USA, INC.	SKELLY UNIT	912 EDDY	S:21, T:17S, R:31E	Aug 2001 FREN	PADDOCK	5,438 Pumping
30-015-31665	CHEVRON USA, INC.	SKELLY UNIT	914 EDDY	S:21, T:17S, R:31E	Jul 2001 FREN	PADDOCK	5,400 Pumping
30-015-31666	CHEVRON USA, INC.	SKELLY UNIT	930 EDDY	S:21, T:17S, R:31E	May 2001 FREN	PADDOCK	5,295 Pumping
30-015-31667	CHEVRON USA, INC.	SKELLY UNIT	931 EDDY	S:21, T:17S, R:31E	Jul 2001 FREN	PADDOCK	5,370 Pumping
30-015-31975	CHEVRON USA, INC.	SKELLY UNIT	933 EDDY	S:21, T:17S, R:31E	Apr 2002 FREN	PADDOCK	5,415 Active
30-015-31976	CHEVRON USA, INC.	SKELLY UNIT	934 EDDY	S:21, T:17S, R:31E	May 2002 FREN	PADDOCK	5,255 Active
30-015-31977	CHEVRON USA, INC.	SKELLY UNIT	935 EDDY	S:21, T:17S, R:31E	Apr 2002 FREN	PADDOCK	5,446 Active
30-015-32436	CHEVRON USA, INC.	SKELLY UNIT	951 EDDY	S:21, T:17S, R:31E	Nov 2002 CEDAR LAKE	MORROW, NORTH (GAS)	12,000 Active
30-015-32595	CHEVRON USA, INC.	SKELLY UNIT	936 EDDY	S:21, T:17S, R:31E	Apr 2003 FREN	PADDOCK	5,265 Active
30-015-32596	CHEVRON USA, INC.	SKELLY UNIT	937 EDDY	S:21, T:17S, R:31E	Apr 2003 FREN	PADDOCK	5,305 Active
30-015-32597	CHEVRON USA, INC.	SKELLY UNIT	938 EDDY	S:21, T:17S, R:31E	Jul 2003 FREN	PADDOCK	5,410 Active
30-015-32598	CHEVRON USA, INC.	SKELLY UNIT	939 EDDY	S:21, T:17S, R:31E	Jul 2003 FREN	PADDOCK	5,360 Active
30-015-00000		DOW B	039 EDDY	S:21, T:17S, R:31E	May 1960 FREN	PADDOCK	Active
				S:21,			

30-015-00000	DOW B	021	EDDY	T:17S, R:31E	Jan 1963	FREN	PENN (GAS)	Active
30-015-05336	SKELLY UNIT	076	EDDY	S:21, T:17S, R:31E	Jan 1967	GRAYBURG JACKSON	SR-Q-G-SA	Active
30-015-05336	SKELLY UNIT	076	EDDY	S:21, T:17S, R:31E	Jan 1969	FREN	SEVEN RIVERS	Active
30-015-32895	CHEVRON USA, INC.	952	EDDY	S:21, T:17S, R:31E	Oct 2003	CEDAR LAKE	MORROW, NORTH (GAS)	11,850 Active
30-015-32895	SKELLY UNIT	952	EDDY	S:21, T:17S, R:31E		HENSHAW	WOLFCAMP, SE (O)	11,850 Active
30-015-00000	SKELLY OIL CO	002	EDDY	S:21, T:17S, R:31E	Jan 1947	GRAYBURG JACKSON QUEEN GBR S A CTD		Active
30-015-00000	SKELLY OIL CO	003	EDDY	S:21, T:17S, R:31E	Jan 1954	GRAYBURG JACKSON QUEEN GBR S A CTD		Active
30-015-00000	SKELLY OIL CO	004	EDDY	S:21, T:17S, R:31E	Jan 1947	GRAYBURG JACKSON QUEEN GBR S A CTD		Active
30-015-00000	SKELLY OIL CO	005	EDDY	S:21, T:17S, R:31E	Jan 1947	GRAYBURG JACKSON QUEEN S A CTD		Active
30-015-00000	SKELLY OIL CO	006	EDDY	S:21, T:17S, R:31E	Jan 1947	GRAYBURG JACKSON QUEEN GBR S A CTD		Active
30-015-00000	SKELLY OIL CO	007	EDDY	S:21, T:17S, R:31E	Jan 1947	GRAYBURG JACKSON QUEEN GBR S A CTD		Active
30-015-00000	SKELLY OIL CO	022	EDDY	S:21, T:17S, R:31E	Apr 1957	GRAYBURG JACKSON QUEEN GBR S A CTD		Active
30-015-00000	SKELLY OIL CO	023	EDDY	S:21, T:17S, R:31E	Jul 1957	GRAYBURG JACKSON QUEEN GBR S A CTD		Active
30-015-00000	SKELLY OIL CO	024	EDDY	S:21, T:17S, R:31E	Sep 1957	GRAYBURG JACKSON QUEEN GBR S A CTD		Active
30-015-00000	SKELLY OIL CO	025	EDDY	S:21, T:17S, R:31E	Oct 1957	GRAYBURG JACKSON QUEEN GBR S A CTD		Active
				S:21,				

30-015-00000	SKELLY OIL CO	DOW B FED	026	EDDY	T:17S, R:31E	Dec 1957	GRAYBURG JACKSON QUEEN GBR S A CTD	Active
30-015-00000	SKELLY OIL CO	DOW B FED	027	EDDY	S:21, T:17S, R:31E	Jan 1958	GRAYBURG JACKSON QUEEN GBR S A CTD	Active
30-015-00000	SKELLY OIL CO	DOW B FED	038	EDDY	S:21, T:17S, R:31E	Feb 1962	GRAYBURG JACKSON QUEEN GBR S A CTD	Active
30-015-00000	SKELLY OIL CO	DOW B AND LYNCH B FED	028	EDDY	S:21, T:17S, R:31E	Jan 1958	GRAYBURG JACKSON QUEEN GBR S A CTD	Active
30-015-00000	SKELLY OIL CO	LYNCH A FED SEC 22	008	EDDY	S:21, T:17S, R:31E	Jan 1962	GRAYBURG JACKSON QUEEN GBR S A CTD	Active
30-015-00000	SKELLY OIL COMPANY	DOW B	021	EDDY	S:21, T:17S, R:31E	Oct 1954	EDDY COUNTY WILDCATS	Active
30-015-00000	SKELLY OIL CO.	DOW B	008	EDDY	S:21, T:17S, R:31E	Jan 1947	FREN	MORROW
30-015-00000	SKELLY OIL CO.	DOW B	009	EDDY	S:21, T:17S, R:31E	Jan 1947	FREN	MORROW
30-015-00000	SKELLY OIL CO.	DOW	010	EDDY	S:21, T:17S, R:31E	Jan 1949	FREN	MORROW
30-015-00000	SKELLY OIL CO.	DOW B	012	EDDY	S:21, T:17S, R:31E	Jan 1947	FREN	MORROW
30-015-00000	SKELLY OIL CO.	DOW B	013	EDDY	S:21, T:17S, R:31E	Jan 1947	FREN	MORROW
30-015-00000	SKELLY OIL CO.	DOW B	014	EDDY	S:21, T:17S, R:31E	Jun 1947	FREN	MORROW
30-015-00000	SKELLY OIL CO.	DOW B	015	EDDY	S:21, T:17S, R:31E	Oct 1947	FREN	MORROW
30-015-00000	SKELLY OIL CO.	DOW B	016	EDDY	S:21, T:17S, R:31E	Oct 1949	FREN	MORROW
30-015-00000	SKELLY OIL CO.	DOW B	017	EDDY	S:21, T:17S, R:31E	Dec 1949	FREN	MORROW
				S:21,				

30-015-00000	SKELLY OIL CO.	DOW B	018	EDDY	T:17S, R:31E	Sep 1950	FREN	MORROW	Active
30-015-00000	SKELLY OIL CO.	DOW B	019	EDDY	S:21, T:17S, R:31E	Oct 1950	FREN	MORROW	Active
30-015-00000	SKELLY OIL CO.	DOW B	020	EDDY	S:21, T:17S, R:31E	Nov 1950	FREN	MORROW	Active
30-015-00000	SKELLY OIL CO	DOW B FED	019	EDDY	S:21, T:17S, R:31E	Jan 1954	FREN	MORROW	Active
30-015-00000	SKELLY OIL CO	DOW B FED	021	EDDY	S:21, T:17S, R:31E	Jan 1963	GRAYBURG JACKSON	SR-Q-G-SA	Active
30-015-00000	SKELLY OIL CO.	DOW B	008	EDDY	S:21, T:17S, R:31E	Jan 1949	FREN POOL		Active
30-015-00000	DOW B	DOW B	002	EDDY	S:21, T:17S, R:31E	Jan 1949	GRAYBURG JACKSON	SR-Q-G-SA	Active
30-015-00000	SKELLY OIL COMPANY	DOW B	010	EDDY	S:21, T:17S, R:31E	Jan 1947	FREN POOL		Active
30-015-00000	SKELLY OIL CO	DOW B FEDERAL	021	EDDY	S:21, T:17S, R:31E	Jan 1957	FREN PENN		Active
30-015-00000	SKELLY OIL COMPANY	DOW B	021	EDDY	S:21, T:17S, R:31E		FREN-PENNSYLVANIAN		Active
30-015-05329	SKELLY OIL COMPANY	SKELLY UNIT	004	EDDY	S:21, T:17S, R:31E	Jan 1971	FREN 7 RVRS		0 Active
30-015-05335	SKELLY OIL COMPANY	SKELLY UNIT	005	EDDY	S:21, T:17S, R:31E	Jan 1971	FREN 7 RVRS		0 Pumping
30-015-05326	SKELLY OIL COMPANY	SKELLY UNIT	006	EDDY	S:21, T:17S, R:31E	Jan 1971	FREN 7 RVRS		0 Active
30-015-05327	SKELLY OIL COMPANY	SKELLY UNIT	007	EDDY	S:21, T:17S, R:31E	Jan 1971	FREN 7 RVRS		0 Pumping
30-015-05328	SKELLY OIL COMPANY	SKELLY UNIT	008	EDDY	S:21, T:17S, R:31E	Jan 1971	FREN 7 RVRS		0 Active
				S:21,					

30-015-05321	SKELLY OIL COMPANY	SKELLY UNIT	009	EDDY	T:17S, R:31E	Jan 1971	FREN 7 RVRS	0	Pumping
30-015-05325	SKELLY OIL COMPANY	SKELLY UNIT	010	EDDY	S:21, T:17S, R:31E	Jan 1971	FREN 7 RVRS	0	Active
30-015-05330	SKELLY OIL COMPANY	SKELLY UNIT	011	EDDY	S:21, T:17S, R:31E	Jan 1971	FREN 7 RVRS	0	Shut-in
30-015-05324	SKELLY OIL COMPANY	SKELLY UNIT	012	EDDY	S:21, T:17S, R:31E	Jan 1971	FREN 7 RVRS	0	Active
30-015-05323	SKELLY OIL COMPANY	SKELLY UNIT	013	EDDY	S:21, T:17S, R:31E	Jan 1971	FREN 7 RVRS	0	Active
30-015-05322	SKELLY OIL COMPANY	SKELLY UNIT	014	EDDY	S:21, T:17S, R:31E	Jan 1971	FREN 7 RVRS	0	Active
30-015-05332	SKELLY OIL COMPANY	SKELLY UNIT	015	EDDY	S:21, T:17S, R:31E	Jan 1971	FREN 7 RVRS	0	Pumping
30-015-05334	SKELLY OIL COMPANY	SKELLY UNIT	016	EDDY	S:21, T:17S, R:31E	Jan 1971	FREN 7 RIVRS	0	Active
30-015-32895	CHEVRON USA, INC.	SKELLY UNIT	952	EDDY	S:21, T:17S, R:31E	Nov 2005	SWD	11,850	Active
30-015-00000	SKELLY OIL CO	DOW B FEDERAL	039	EDDY	S:21, T:17S, R:31E	Feb 1965			Active


WOLFCAMP

Date: December 18, 2007

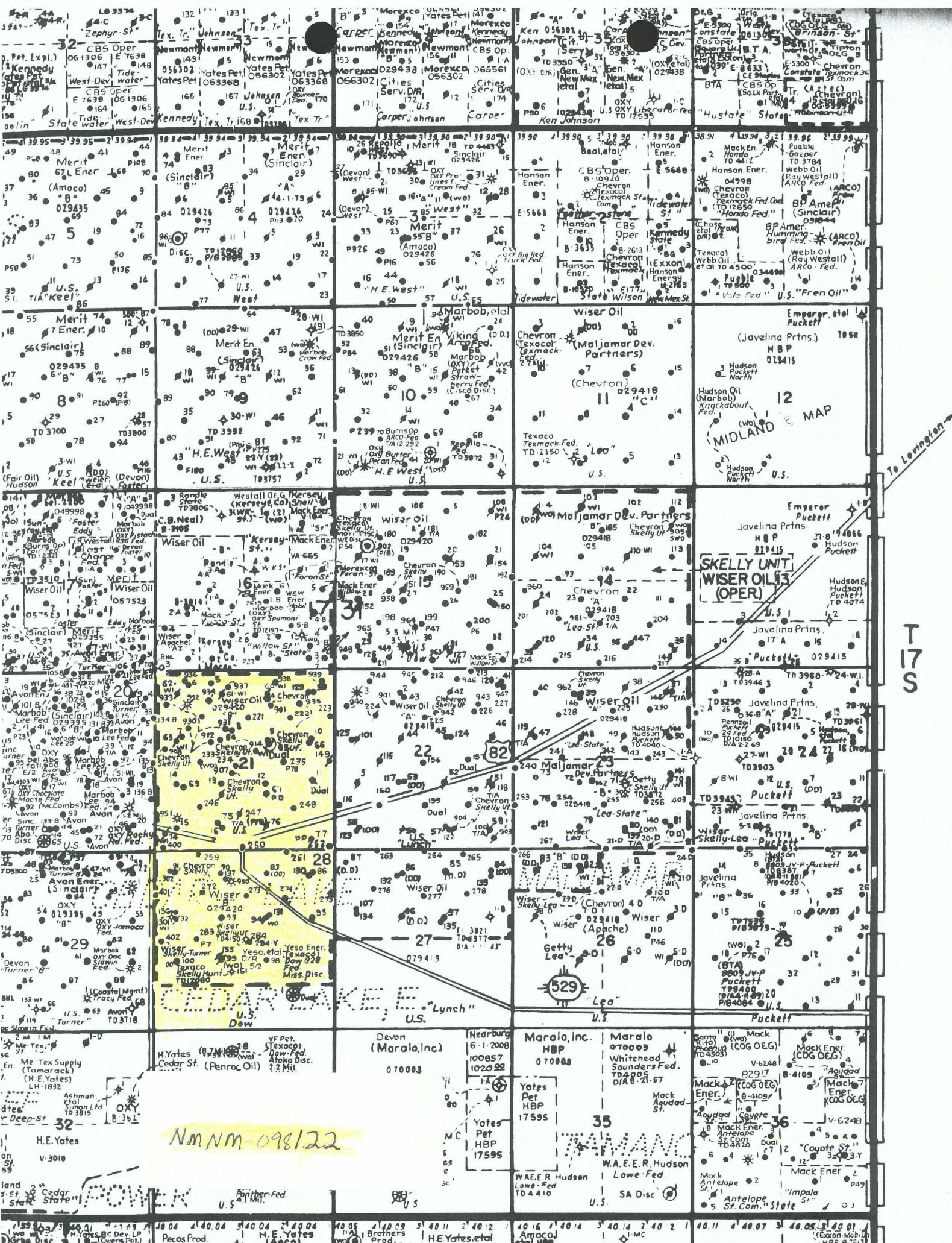
To: Phyllis Edwards

From: Thena Anderson

RE: Unorthodox Locations
Skelly Unit #972 and #973
Section 21, T17S, R31E
Eddy County, New Mexico

 Please be advised that ownership and operator of the spacing units containing the unorthodox well locations, Skelly Unit #972 (Unit C) and Skelly #973 (Unit B), and the adjoining spacing units (Unit D and Unit C, respectively) are common. All of these tracts are on the same BLM lease NMNM-098122 covering all of Section 21 as well as additional lands.

Please advise if you need additional information.



NmNm-098122

To Livingston

T 17 S

H.E. Yates
V-3018
Cedar State

Devon (Maralo, Inc.)
070003
Yates Pet HBP 17595
Nearburg 6-1-2008
100857
102092
Maralo, Inc.
HBP
070003
Yates Pet HBP 17595
W.A.E.E.R. Hudson
Low-Fed
TD 4410
U.S.
SA Disc

Maralo, Inc.
HBP
070003
Yates Pet HBP 17595
W.A.E.E.R. Hudson
Low-Fed
TD 4410
U.S.
SA Disc

Maralo, Inc.
HBP
070003
Whitehead Saunders Fed.
TD 4005
DIA 8-21-57
Mack Ener (COG OEG)
V-6248
B-4109
Aggrad
Mack Ener (COG OEG)
V-6248
Mack Ener (COG OEG)
V-6248
Coyote St.
3-5-11
Mack Ener
2
Antelope St. Com. State
5

Brooks, David K., EMNRD

From: Brooks, David K., EMNRD
Sent: Tuesday, January 29, 2008 4:57 PM
To: 'Phyllis Edwards'
Subject: Skelly Unit No. 972 and No. 973 NSL Applications

Dear Ms. Edwards

Please clarify the relationship between COG and Chevron USA with respect to these proposed wells.

In whose name will the APD for these wells be filed?

Thanks

David K. Brooks
Legal Examiner
505-476-3450

Brooks, David K., EMNRD

From: Phyllis Edwards [PEdwards@conchoresources.com]
Sent: Wednesday, January 30, 2008 6:57 AM
To: Brooks, David K., EMNRD
Subject: RE: Skelly Unit No. 972 and No. 973 NSL Applications

Chevron USA Inc. is the operator. COG Operating LLC is agent.

Thanks,

Phyllis Edwards

COG Operating LLC
Fasken Tower II
550 W. Texas Avenue, Suite 1300
Midland, TX 79701
432-685-4340 P
432-685-4399 F
pedwards@conchoresources.com

From: Brooks, David K., EMNRD [mailto:david.brooks@state.nm.us]
Sent: Tuesday, January 29, 2008 5:57 PM
To: Phyllis Edwards
Subject: Skelly Unit No. 972 and No. 973 NSL Applications

Dear Ms. Edwards

Please clarify the relationship between COG and Chevron USA with respect to these proposed wells.

In whose name will the APD for these wells be filed?

Thanks

David K. Brooks
Legal Examiner
505-476-3450

Confidentiality Notice: This e-mail, including all attachments is for the sole use of the intended recipient (s) and may contain confidential and privileged information. Any unauthorized review, use, disclosure or distribution is prohibited unless specifically provided under the New Mexico Inspection of Public Records Act. If you are not the intended recipient, please contact the sender and destroy all copies of this message. -- This email has been scanned by the Sybari - Antigen Email System.

This inbound email has been scanned by the MessageLabs Email Security System.
