

**AP - 7**

**REPORT**

**DATE:**

**DA1 2006**



\* AP-7

Report

DA/ 2006

**2006  
ANNUAL MONITORING REPORT**

**DARR ANGELL #1  
LEA COUNTY, NEW MEXICO  
NW ¼ SE ¼ SECTION 11, TOWNSHIP 15 SOUTH, RANGE 37 EAST  
PLAINS EMS #: DARR ANGELL 1  
NMOCD REFERENCE NUMBER AP-007**

Prepared For:

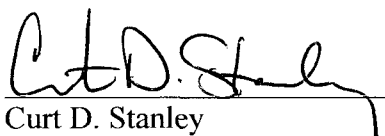
**PLAINS MARKETING, L.P.**  
333 CLAY STREET, SUITE 1600  
HOUSTON, TEXAS 77002

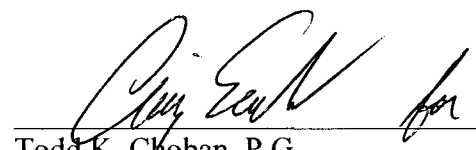


Prepared By:

**NOVA Safety and Environmental**  
2057 Commerce Street  
Midland, Texas 79703

**March 2007**

  
Curt D. Stanley  
Project Manager

  
Todd K. Choban, P.G.  
Vice President Technical Services

## TABLE OF CONTENTS

INTRODUCTION .....	1
SITE DESCRIPTION AND BACKGROUND INFORMATION.....	1
FIELD ACTIVITIES .....	2
LABORATORY RESULTS .....	3
SUMMARY .....	7
ANTICIPATED ACTIONS .....	7
LIMITATIONS .....	8
DISTRIBUTION.....	9

### FIGURES

Figure 1 – Site Location Map

Figure 2A – Inferred Groundwater Gradient Map – March 22, 2006

2B – Inferred Groundwater Gradient Map – June 19, 2006

2C – Inferred Groundwater Gradient Map – September 19, 2006

2D – Inferred Groundwater Gradient Map – December 7, 2006

Figure 3A – Groundwater Concentration and Inferred PSH Extent Map – March 22, 2006

3B – Groundwater Concentration and Inferred PSH Extent Map – June 19, 2006

3C – Groundwater Concentration and Inferred PSH Extent Map – September 19, 2006

3D – Groundwater Concentration and Inferred PSH Extent Map – December 7, 2006

### TABLES

Table 1 – 2006 Groundwater Elevation Data

Table 2 – 2006 Concentrations of Benzene and BTEX in Groundwater

### APPENDICES

Appendix A – Release Notification and Corrective Action (Form C-141)

### ENCLOSED ON DATA DISK

2006 Annual Monitoring Report

2006 Tables 1 and 2 - Groundwater Elevation and BTEX Concentration Data

2006 Figures 1, 2A-2D, and 3A-3D

Electronic Copies of Laboratory Reports

Historic Groundwater Elevation Tables

Historic BTEX Concentration Tables

## INTRODUCTION

On behalf of Plains Marketing, L.P. (Plains), NOVA Safety and Environmental (NOVA) is pleased to submit this Annual Monitoring Report in compliance with the New Mexico Oil Conservation Division (NMOCD) letter of May 1998, requiring submittal of an Annual Monitoring Report by April 1 of each year. Beginning on May 29, 2004, project management responsibilities were assumed by NOVA. The Darr Angell #1 pipeline release site (the site), which was formerly responsibility of Enron Oil Trading and Transportation (EOTT), is now the responsibility of Plains. This report is intended to be viewed as a complete document with text, figures, tables, and appendices. The report presents the results of the quarterly groundwater monitoring events conducted in calendar year 2006 only. However, historic data tables as well as 2006 laboratory analytical reports are enclosed electronically. For reference, the Site Location Map is provided as Figure 1.

Groundwater monitoring was conducted during each of four (4) quarters during 2006 to assess the levels and extent of dissolved phase constituents and phase separated hydrocarbon (PSH). Each groundwater monitoring event consisted of measuring static water levels in monitor wells, checking for the presence of PSH on the water column, and purging and sampling of each well exhibiting sufficient recharge. Monitor wells containing a thickness of PSH greater than 0.01 foot were not sampled.

## SITE DESCRIPTION AND BACKGROUND INFORMATION

The legal description of the site is NW ¼ SE ¼ Section 11, Township 15 South, Range 37 East. The release was discovered by EOTT employees and reported on May 1, 1997. According to the release report, an estimated 25 barrels of crude oil was released and 15 barrels were recovered during response actions. The release occurred from an 8-inch EOTT pipeline and was attributed to internal pipeline corrosion. The Release Notification and Corrective Action Form (C-141) is provided as Appendix A.

Twenty one (21) groundwater monitor wells (MW-1 through MW-21) and eleven (11) product recovery wells (RW-1 through RW-11) are currently on-site. An enhanced recovery system employing three (3) total fluid pumps and seven (7) skimmer pumps is currently operating on site. The total fluid pumps were installed in recovery wells RW-1, RW-6, and RW-8 in 2005. The skimmer pumps are installed in monitor wells MW-5 and MW-9 and in recovery wells RW-4, RW-5, RW-9, RW-10 and RW-11. The enhanced recovery system operated generally throughout the 2006 reporting period. Monitor and recovery wells exhibiting PSH, but not a part of the automated recovery system, were recovered manually. Recovered product from the manually recovered wells was placed in one of the three (3) storage frac tanks located on-site. Recovered product was periodically transported to the 34 Junction South Station facility for reinjection to the Plains Pipeline system. Recovered groundwater contained in the storage tanks was transported by Key Energy of Hobbs, New Mexico utilizing a licensed disposal facility (OCD AO SWD-730).

## FIELD ACTIVITIES

The average thickness of PSH in recovery wells containing PSH during 2006 was 4.42 feet. In comparison, the average thickness of PSH in recovery wells containing PSH during 2005 was 5.57 feet. The maximum PSH thickness of 13.78 feet occurred in recovery well RW-4 on September 13, 2006 and the average thickness of during 2006 was 2.29 feet. In comparison, the average thickness of PSH in monitor wells displaying PSH during 2005 was 3.48 feet. Approximately 12,096 gallons (288 barrels) of PSH was recovered from the site during the 2006 reporting period. A total of approximately 30,286 gallons (721 barrels) of PSH has been recovered since the start of product recovery. Measurable thicknesses of PSH are recorded in Table 1 and Figures 3A through 3D.

Quarterly monitoring events for the reporting period were performed according to the following sampling schedule, which was approved by the NMOCD in correspondence dated April 28, 2004 and amended in NMOCD correspondences dated June 20, 2005 and April 11, 2006.

NMOCD Approved Sampling Schedule					
MW-1	Quarterly	MW-12	Quarterly	RW-1	Quarterly
MW-2	Quarterly	MW-13	Quarterly	RW-2	Quarterly
MW-3	Quarterly	MW-14	Quarterly	RW-3	Quarterly
MW-4	Annually	MW-15	Annually	RW-4	Quarterly
MW-5	Quarterly	MW-16	Annually	RW-5	Quarterly
MW-6	Quarterly	MW-17	Quarterly	RW-6	Quarterly
MW-7	Semi-Annually	MW-18	Annually	RW-7	Quarterly
MW-8	Quarterly	MW-19	Quarterly	RW-8	Quarterly
MW-9	Quarterly	MW-20	Annually	RW-9	Quarterly
MW-10	Quarterly	MW-21	Quarterly	RW10	Quarterly
MW-11	Annually			RW-11	Quarterly

The site monitor wells were gauged and sampled on March 22, June 19, September 19, and December 7, 2006. During each sampling event, sampled monitor wells were purged of approximately three (3) well volumes of water or until the wells failed to produce water using a PVC bailer or electric Grundfos pump. Groundwater was allowed to recharge and samples were obtained using disposable Teflon samplers. Water samples were collected in clean, glass containers provided by the laboratory and placed on ice in the field. Purge water was collected in a polystyrene tank and disposed of by Key Energy of Hobbs, New Mexico utilizing a licensed disposal facility (OCD AO SWD-730).

Locations of the monitor wells and the inferred groundwater gradient, which were constructed from measurements collected during the four (4) quarterly monitoring events, are depicted on Figures 2A through 2D, the Inferred Groundwater Gradient Maps. Groundwater elevation data for 2006 is provided as Table 1. Historic groundwater elevation data beginning at project inception is enclosed on the attached data disk.

The most recent Groundwater Gradient Map, Figure 2D, indicates a general gradient of approximately 0.0018 feet/foot to the southeast as measured between groundwater monitor wells

MW-2 and MW-7. This is consistent with data presented on Figures 2A through 2C from earlier in the year. The corrected groundwater elevation has ranged between 3,726.06 and 3,732.37 feet above mean sea level, in MW-21 on December 7, 2006 and RW-8 on October 3, 2006, respectively.

## LABORATORY RESULTS

Monitor wells MW-1 through MW-3, MW-5, MW-6, MW-8 through MW-10, MW-13, MW-14 and all recovery wells (RW-1 through RW-11) contained measurable PSH and were not sampled during the reporting period.

Groundwater samples collected during the 2006 monitoring events were delivered to Trace Analysis, Inc. of Lubbock, Texas for determination of Benzene, Toluene, Ethylbenzene and Xylene (BTEX) constituent concentrations by EPA Method SW846-8021b. A listing of BTEX constituent concentrations for 2006 is summarized in Table 2 and copies of the laboratory reports are provided on the enclosed disk. The inferred extent of PSH and quarterly groundwater sample results for benzene and BTEX constituent concentrations are depicted on Figures 3A-3D.

**Monitor well MW-1** is monitored on a quarterly schedule. Monitor well MW-1 was not sampled during any of the four (4) quarters of the reporting period, due to the presence of PSH in the recovery well. PSH thicknesses of 9.23 feet, 7.37 feet, 7.54 feet, and 8.28 feet were reported during the 1<sup>st</sup>, 2<sup>nd</sup>, 3<sup>rd</sup> and 4<sup>th</sup> quarter of 2006, respectively.

**Monitor well MW-2** is monitored on a quarterly schedule. Monitor well MW-2 was not sampled during any of the four (4) quarters of the reporting period, due to the presence of PSH in the recovery well. PSH thicknesses of 0.58 feet, 0.81 feet, 0.32 feet, and 0.52 feet were reported during the 1<sup>st</sup>, 2<sup>nd</sup>, 3<sup>rd</sup> and 4<sup>th</sup> quarter of 2006, respectively.

**Monitor well MW-3** is monitored on a quarterly schedule. Monitor well MW-3 was not sampled during any of the four (4) quarters of the reporting period, due to the presence of PSH in the recovery well. PSH thicknesses of 0.21 feet, 0.22 feet, 0.28 feet, and 0.22 feet were reported during the 1<sup>st</sup>, 2<sup>nd</sup>, 3<sup>rd</sup> and 4<sup>th</sup> quarter of 2006, respectively.

**Monitor well MW-4** is sampled on an annual schedule and analytical results indicate BTEX constituent concentrations were below laboratory method detection limit (MDL) and NMOC regulatory standards of 0.01 for benzene, 0.75 for toluene, 0.75 for ethylbenzene and 0.62 for xylene, for each BTEX constituent during the 4<sup>th</sup> quarter sampling event.

**Monitor well MW-5** is monitored on a quarterly schedule. Monitor well MW-5 was not sampled during any of the four (4) quarters of the reporting period, due to the presence of PSH in the recovery well. PSH thicknesses of 1.51 feet, 0.38 feet, 7.93 feet, and 8.32 feet were reported during the 1<sup>st</sup>, 2<sup>nd</sup>, 3<sup>rd</sup> and 4<sup>th</sup> quarter of 2006, respectively.

**Monitor well MW-6** is monitored on a quarterly schedule. Monitor well MW-6 was not sampled during any of the four (4) quarters of the reporting period, due to the presence of PSH in the

recovery well. PSH thicknesses of 0.39 feet, 1.00 feet, 0.34 feet, and 0.32 feet were reported during the 1<sup>st</sup>, 2<sup>nd</sup>, 3<sup>rd</sup> and 4<sup>th</sup> quarter of 2006, respectively.

**Monitor well MW-7** is sampled on a semi-annual schedule and analytical results indicate BTEX constituent concentrations were below MDL and NMOCD regulatory standards for each BTEX constituent during the 2<sup>nd</sup> and 4<sup>th</sup> quarter sampling event.

**Monitor well MW-8** is monitored on a quarterly schedule. Monitor well MW-8 was not sampled during any of the four (4) quarters of the reporting period, due to the presence of PSH in the recovery well. PSH thicknesses of 1.06 feet, 2.22 feet, 3.95 feet, and 1.40 feet were reported during the 1<sup>st</sup>, 2<sup>nd</sup>, 3<sup>rd</sup> and 4<sup>th</sup> quarter of 2006, respectively.

**Monitor well MW-9** is monitored on a quarterly schedule. Monitor well MW-9 was not sampled during any of the four (4) quarters of the reporting period, due to the presence of PSH in the recovery well. PSH thicknesses of 0.50 feet, 0.18 feet, 8.87 feet, and 8.73 feet were reported during the 1<sup>st</sup>, 2<sup>nd</sup>, 3<sup>rd</sup> and 4<sup>th</sup> quarter of 2006, respectively.

**Monitor well MW-10** is monitored on a quarterly schedule. Monitor well MW-10 was not sampled during any of the four (4) quarters of the reporting period, due to the presence of PSH in the recovery well. PSH thicknesses of 0.74 feet, 0.69 feet, 2.34 feet, and 4.71 feet were reported during the 1<sup>st</sup>, 2<sup>nd</sup>, 3<sup>rd</sup> and 4<sup>th</sup> quarter of 2006, respectively.

**Monitor well MW-11** is sampled on an annual schedule and analytical results indicate BTEX constituent concentrations were below MDL and NMOCD regulatory standards for each BTEX constituent during the 4<sup>th</sup> quarter sampling event.

**Monitor well MW-12** is sampled on a quarterly schedule and analytical results indicate benzene concentrations ranged from 0.640 mg/L during the 2<sup>nd</sup> quarter to 1.130 mg/L during the 4<sup>th</sup> quarter of 2006. Benzene concentrations were above NMOCD regulatory standards during all four (4) quarters of the reporting period. Toluene, ethylbenzene and xylene concentrations were below laboratory method detection limits (MDL) and NMOCD regulatory standards during all four (4) quarters of the reporting period.

**Monitor well MW-13** is monitored on a quarterly schedule. Monitor well MW-13 was not sampled during any of the four (4) quarters of the reporting period, due to the presence of PSH in the recovery well. PSH thicknesses of 1.87 feet, 2.94 feet, 2.26 feet, and 1.71 feet were reported during the 1<sup>st</sup>, 2<sup>nd</sup>, 3<sup>rd</sup> and 4<sup>th</sup> quarter of 2006, respectively.

**Monitor well MW-14** is monitored on a quarterly schedule. Monitor well MW-14 was not sampled during any of the four (4) quarters of the reporting period, due to the presence of PSH in the recovery well. PSH thicknesses of 4.37 feet, 4.24 feet, 4.16 feet, and 3.98 feet were reported during the 1<sup>st</sup>, 2<sup>nd</sup>, 3<sup>rd</sup> and 4<sup>th</sup> quarter of 2006, respectively.

**Monitor well MW-15** is sampled on an annual schedule and analytical results indicate BTEX constituent concentrations were below MDL and NMOCD regulatory standards for each BTEX constituent during the 4<sup>th</sup> quarter sampling event.

**Monitor well MW-16** is sampled on an annual schedule and analytical results indicate BTEX constituent concentrations were below MDL and NMOCD regulatory standards for each BTEX constituent during the 4<sup>th</sup> quarter sampling event.

**Monitor well MW-17** is sampled on a quarterly schedule and analytical results indicate BTEX constituent concentrations were below MDL and NMOCD regulatory standards for each BTEX constituent during all four (4) quarters of the reporting period.

**Monitor well MW-18** is sampled on an annual schedule and analytical results indicate BTEX constituent concentrations were below MDL and NMOCD regulatory standards for each BTEX constituent during the 4<sup>th</sup> quarter sampling event.

**Monitor well MW-19** is currently sampled on a NMOCD approved quarterly schedule (in reporting year 2005 and 1<sup>st</sup> quarter 2006, MW-19 was previously on an NMOCD approved annual schedule) and analytical results indicate BTEX constituent concentrations were below MDL and NMOCD regulatory standards for each BTEX constituent during the 2<sup>nd</sup>, 3<sup>rd</sup> and 4<sup>th</sup> quarter sampling event.

**Monitor well MW-20** is sampled on an annual schedule and analytical results indicate BTEX constituent concentrations were below MDL and NMOCD regulatory standards for each BTEX constituent during the 4<sup>th</sup> quarter sampling event.

**Monitor well MW-21** is sampled on a quarterly schedule and analytical results indicate benzene concentrations ranged from 0.0066 mg/L during the 4<sup>th</sup> quarter to 0.0163 mg/L during the 1<sup>st</sup> quarter of 2006. Benzene concentrations were above NMOCD regulatory standards during the 1<sup>st</sup> and 2<sup>nd</sup> quarters of the reporting period. Toluene concentrations were below MDL and NMOCD regulatory standards during all four (4) quarters of the reporting period. Ethylbenzene concentrations ranged from <0.001 mg/L during the 3<sup>rd</sup> and 4<sup>th</sup> quarters to 0.0014 mg/L during the 1<sup>st</sup> quarter of 2006. Ethylbenzene concentrations were below NMOCD regulatory standards during all four (4) quarters of the reporting period. Xylene concentrations ranged from <0.001 mg/L during the 1<sup>st</sup> and 2<sup>nd</sup> quarters to 0.00380 mg/L during the 1<sup>st</sup> quarter of 2006. Xylene concentrations were below NMOCD regulatory standards during all four (4) quarters of the reporting period.

**Recovery well RW-1** is monitored on a quarterly schedule. Recovery well RW-1 was not sampled during any of the four (4) quarters of the reporting period, due to the presence of PSH in the recovery well. PSH thicknesses of 1.03 feet, 1.00 feet, 7.47 feet, and 7.05 feet were reported during the 1<sup>st</sup>, 2<sup>nd</sup>, 3<sup>rd</sup> and 4<sup>th</sup> quarter of 2006, respectively.

**Recovery well RW-2** is monitored on a quarterly schedule. Recovery well RW-2 was not sampled during any of the four (4) quarters of the reporting period, due to the presence of PSH in the recovery well. PSH thicknesses of 7.57 feet, 7.07 feet, 7.30 feet, and 7.43 feet were reported during the 1<sup>st</sup>, 2<sup>nd</sup>, 3<sup>rd</sup> and 4<sup>th</sup> quarter of 2006, respectively.



**Recovery well RW-3** is monitored on a quarterly schedule. Recovery well RW-3 was not sampled during any of the four (4) quarters of the reporting period, due to the presence of PSH in the recovery well. PSH thicknesses of 5.39 feet, 3.29 feet, 3.14 feet, and 3.81 feet were reported during the 1<sup>st</sup>, 2<sup>nd</sup>, 3<sup>rd</sup> and 4<sup>th</sup> quarter of 2006, respectively.

**Recovery well RW-4** is monitored on a quarterly schedule. Recovery well RW-4 was not sampled during any of the four (4) quarters of the reporting period, due to the presence of PSH in the recovery well. PSH thicknesses of 8.64 feet, 8.56 feet, and 8.55 feet were reported during the 1<sup>st</sup>, 2<sup>nd</sup>, and 3<sup>rd</sup> quarters of 2006, respectively. The recovery well was obstructed during the 4<sup>th</sup> quarter sampling event.

**Recovery well RW-5** is monitored on a quarterly schedule. Recovery well RW-5 was not sampled during any of the four (4) quarters of the reporting period, due to the presence of PSH in the recovery well. PSH thicknesses of 0.98 feet, 0.18 feet, 10.49 feet, and 8.65 feet were reported during the 1<sup>st</sup>, 2<sup>nd</sup>, 3<sup>rd</sup> and 4<sup>th</sup> quarter of 2006, respectively.

**Recovery well RW-6** is monitored on a quarterly schedule. Recovery well RW-6 was not sampled during any of the four (4) quarters of the reporting period, due to the presence of PSH in the recovery well. PSH thicknesses of 7.82 feet, 8.05 feet, 7.95 feet, and 8.72 feet were reported during the 1<sup>st</sup>, 2<sup>nd</sup>, 3<sup>rd</sup> and 4<sup>th</sup> quarter of 2006, respectively.

**Recovery well RW-7** is monitored on a quarterly schedule. Recovery well RW-7 was not sampled during any of the four (4) quarters of the reporting period, due to the presence of PSH in the recovery well. PSH thicknesses of 7.80 feet, 0.24 feet, 6.92 feet, and 6.31 feet were reported during the 1<sup>st</sup>, 2<sup>nd</sup>, 3<sup>rd</sup> and 4<sup>th</sup> quarter of 2006, respectively.

**Recovery well RW-8** is monitored on a quarterly schedule. Recovery well RW-8 was not sampled during any of the four (4) quarters of the reporting period, due to the presence of PSH in the recovery well. PSH thicknesses of 3.29 feet, 7.41 feet, 8.77 feet, and 7.10 feet were reported during the 1<sup>st</sup>, 2<sup>nd</sup>, 3<sup>rd</sup> and 4<sup>th</sup> quarter of 2006, respectively.

**Recovery well RW-9** is monitored on a quarterly schedule. Recovery well RW-9 was not sampled during any of the four (4) quarters of the reporting period, due to the presence of PSH in the recovery well. PSH thicknesses of 0.14 feet, 0.06 feet, 4.88 feet, and 5.30 feet were reported during the 1<sup>st</sup>, 2<sup>nd</sup>, 3<sup>rd</sup> and 4<sup>th</sup> quarter of 2006, respectively.

**Recovery well RW-10** is monitored on a quarterly schedule. Recovery well RW-10 was not sampled during any of the four (4) quarters of the reporting period, due to the presence of PSH in the recovery well. PSH thicknesses of 0.33 feet, 0.13 feet, 7.36 feet, and 5.71 feet were reported during the 1<sup>st</sup>, 2<sup>nd</sup>, 3<sup>rd</sup> and 4<sup>th</sup> quarter of 2006, respectively.

**Recovery well RW-11** is monitored on a quarterly schedule. Recovery well RW-11 was not sampled during any of the four (4) quarters of the reporting period, due to the presence of PSH in the recovery well. PSH thicknesses of 0.46 feet, 0.14 feet, 7.83 feet, and 6.64 feet were reported during the 1<sup>st</sup>, 2<sup>nd</sup>, 3<sup>rd</sup> and 4<sup>th</sup> quarter of 2006, respectively.

Laboratory analytical results were compared to NMOCD regulatory limits based on the New Mexico groundwater standards found in section 20.6.2.3103 of the New Mexico Administrative Code.

## **SUMMARY**

This report presents the results of monitoring activities for the 2006 annual monitoring period. Twenty one (21) groundwater monitor wells (MW-1 through MW-21) and eleven (11) product recovery wells (RW-1 through RW-11) are currently on-site. An enhanced recovery system operated on-site during the 2006 reporting period. The most recent Groundwater Gradient Map, Figure 2D, indicates a general gradient of approximately 0.0018 feet/foot to the southeast.

Twenty one (21) monitor and recovery wells contained measurable thicknesses of PSH during the reporting period. Approximately 12,096 gallons (288 barrels) of PSH was recovered from the site during the 2006 reporting period. A total of approximately 30,286 gallons (721 barrels) of PSH has been recovered since the start of product recovery.

The average thickness of PSH in recovery wells containing PSH during 2006 was 4.42 feet. In comparison, the average thickness of PSH in recovery wells containing PSH during 2005 was 5.57 feet. The maximum PSH thickness of 13.78 feet occurred in recovery well RW-4 on September 13, 2006 and the average thickness of during 2006 was 2.29 feet. In comparison, the average thickness of PSH in monitor wells displaying PSH during 2005 was 3.48 feet. Indications are that the operation of enhanced recovery system at the Darr Angell #1 release site has been successful in reducing observed PSH thicknesses in on-site monitor and recovery wells.

Review of laboratory analytical results of the groundwater samples obtained during the 2006 monitoring period indicate the BTEX constituent concentrations are below applicable NMOCD standards in nine (9) of the thirty-two (32) monitor and recovery wells currently on-site. The remaining twenty (23) monitor wells either contained measurable thicknesses of PSH and were not sampled or exhibited analytical results above the NMOCD regulatory standard during at least one quarterly monitoring event of 2006. Of the ten (10) monitor wells sampled in 2006, only monitor wells MW-12 and MW-21 (1<sup>st</sup> and 2<sup>nd</sup> quarter only) exhibited concentrations of BTEX constituents above the NMOCD regulatory standard. Dissolved phase impact appears to be limited to monitor wells MW-12 and MW-21 and to those monitor and recovery wells which exhibit PSH.

## **ANTICIPATED ACTIONS**

Groundwater monitoring, weekly product recovery, automated system maintenance and optimization will continue through 2007. An Annual Monitoring Report will be submitted to the NMOCD before April 1, 2008.

A leak zone investigation appears to be warranted and would provide additional information for planning additional source (soil) area remediation. Plains will submit work plans for these actions to the NMOCD in 2007.

## LIMITATIONS

NOVA has prepared this Annual Monitoring Report to the best of its ability. No other warranty, expressed or implied, is made or intended.

NOVA has examined and relied upon documents referenced in the report and has relied on oral statements made by certain individuals. NOVA has not conducted an independent examination of the facts contained in referenced materials and statements. We have presumed the genuineness of the documents and that the information provided in documents or statements is true and accurate. NOVA has prepared this report, in a professional manner, using the degree of skill and care exercised by similar environmental consultants. NOVA also notes that the facts and conditions referenced in this report may change over time and the conclusions and recommendations set forth herein are applicable only to the facts and conditions as described at the time of this report.

This report has been prepared for the benefit of Plains. The information contained in this report, including all exhibits and attachments, may not be used by any other party without the express consent of NOVA and/or Plains.

## DISTRIBUTION

- Copy 1      Ben Stone  
New Mexico Energy, Minerals and Natural Resources Department  
Oil Conservation Division  
1220 South St. Francis Drive  
Santa Fe, NM 87505
- Copy 2:      Larry Johnson and Patricia Caperton  
New Mexico Energy, Minerals and Natural Resources Department  
Oil Conservation Division, District 1  
1625 French Drive  
Hobbs, NM 88240
- Copy 3:      Camille Reynolds  
Plains Marketing, L.P.  
3112 Highway 82  
Lovington, NM  
cjreynolds@paalp.com
- Copy 4:      Jeff Dann  
Plains Marketing, L.P.  
333 Clay Street  
Suite 1600  
Houston, TX 77002  
jpdann@paalp.com
- Copy 5:      NOVA Safety and Environmental  
2057 Commerce Street  
Midland, TX 79703  
cstanley@novatraining.cc



**Location**

NW1/4 SE1/4 Sec 11 T15S R37E

Lat. 33° 01' 36.0"N  
Long 103° 10' 00.7"W

**Figure 1**  
Site Location Map  
Plains Marketing, L.P.

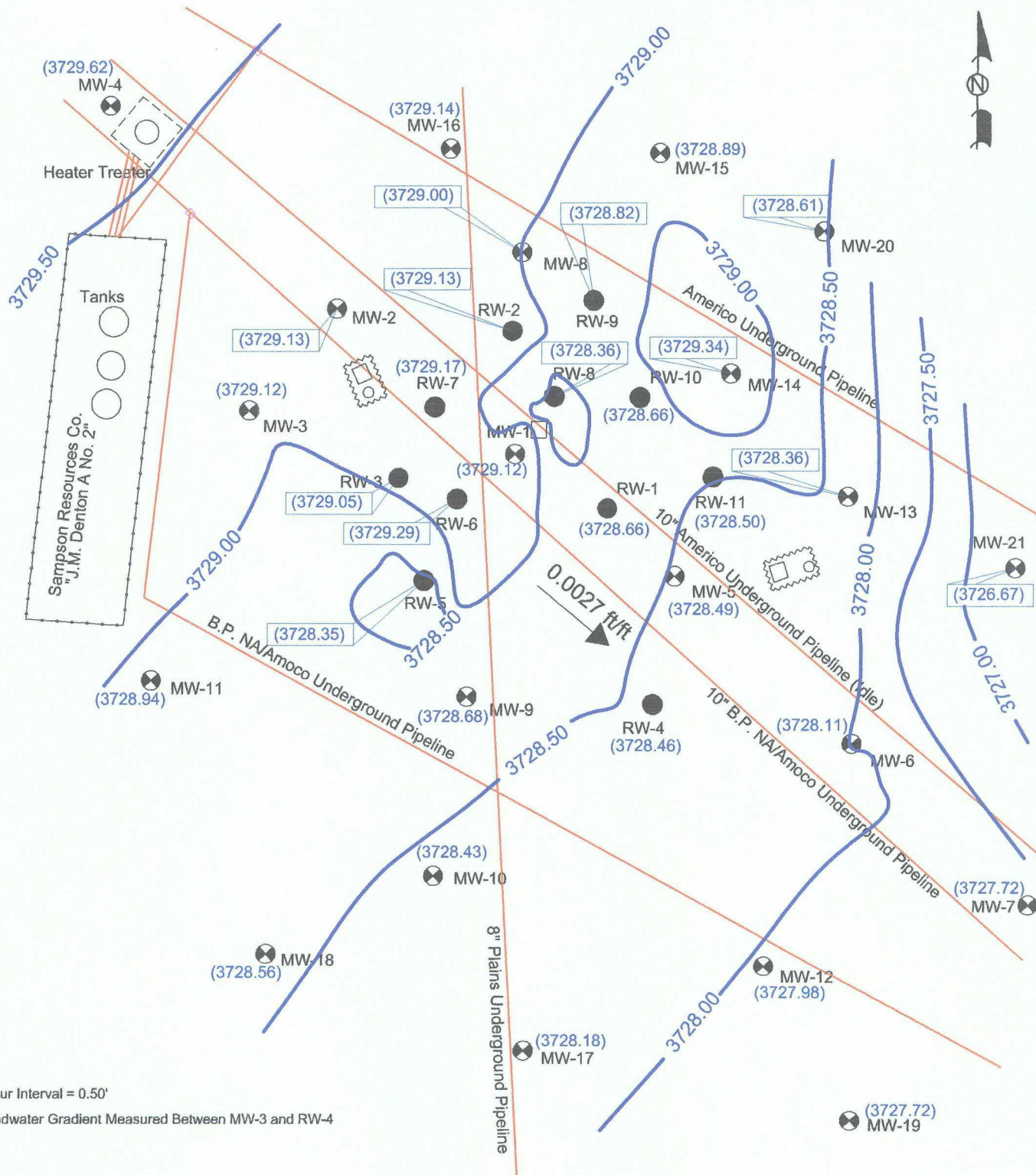
Darr Angell #1  
Lea County, NM

**NOVA Safety and Environmental**

Scale: 1"=2000'    Prep By: DPM    Checked By: MRE

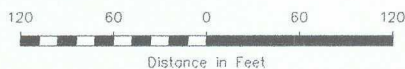
February 15, 2005





**NOTE:**

- Contour Interval = 0.50'
- Groundwater Gradient Measured Between MW-3 and RW-4



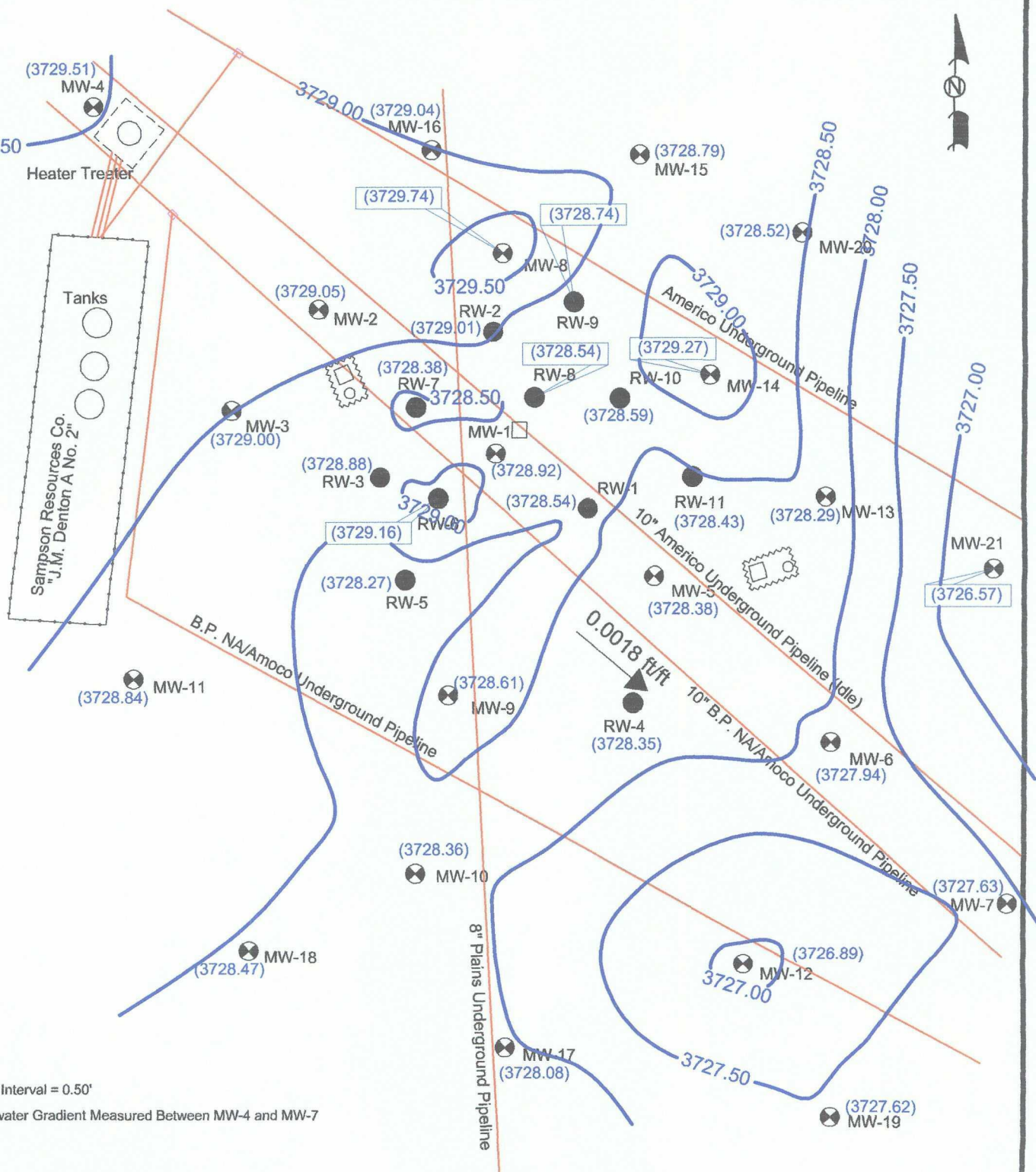
**LEGEND:**

- |  |  |
|--|--|
| <ul style="list-style-type: none"> <li>Monitor Well Location</li> <li>Recovery Well Location</li> <li>Product/Recovery Line</li> <li>Pipeline</li> <li>Groundwater Elevation Contour Line</li> <li>Groundwater Gradient and Magnitude</li> </ul> | <ul style="list-style-type: none"> <li>(3728.80) Groundwater Elevation (feet)</li> <li>Bermed Containment Area</li> <li>Shed</li> <li>Poly Tank</li> </ul> |
|--|--|

**Figure 2A**  
**Inferred Groundwater**  
**Gradient Map (3/22/06)**  
**Plains Marketing, L.P.**  
**Darr Angell #1**  
**Lea County, NM**

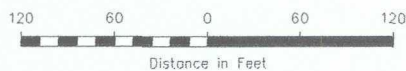
**NOVA Safety and Environmental**

NW1/4 SE1/4 Sec 11 T15S R37E		33° 01' 36.0"N 103° 10' 00.7"W	
Scale: 1"=120'	CAD By: DGC	Checked By: CDS	
May 23, 2006			



NOTE:

- Contour Interval = 0.50'
- Groundwater Gradient Measured Between MW-4 and MW-7



LEGEND:

- |  |  |
|--|--|
| <ul style="list-style-type: none"> <li>● Monitor Well Location</li> <li>● Recovery Well Location</li> <li>- - - Product/Recovery Line</li> <li>— Pipeline</li> <li>— Groundwater Elevation Contour Line</li> <li>→ Groundwater Gradient and Magnitude</li> </ul> | <ul style="list-style-type: none"> <li>(3728.80) Groundwater Elevation (feet)</li> <li>--- Bermed Containment Area</li> <li>□ Shed</li> <li>○ Poly Tank</li> </ul> |
|--|--|

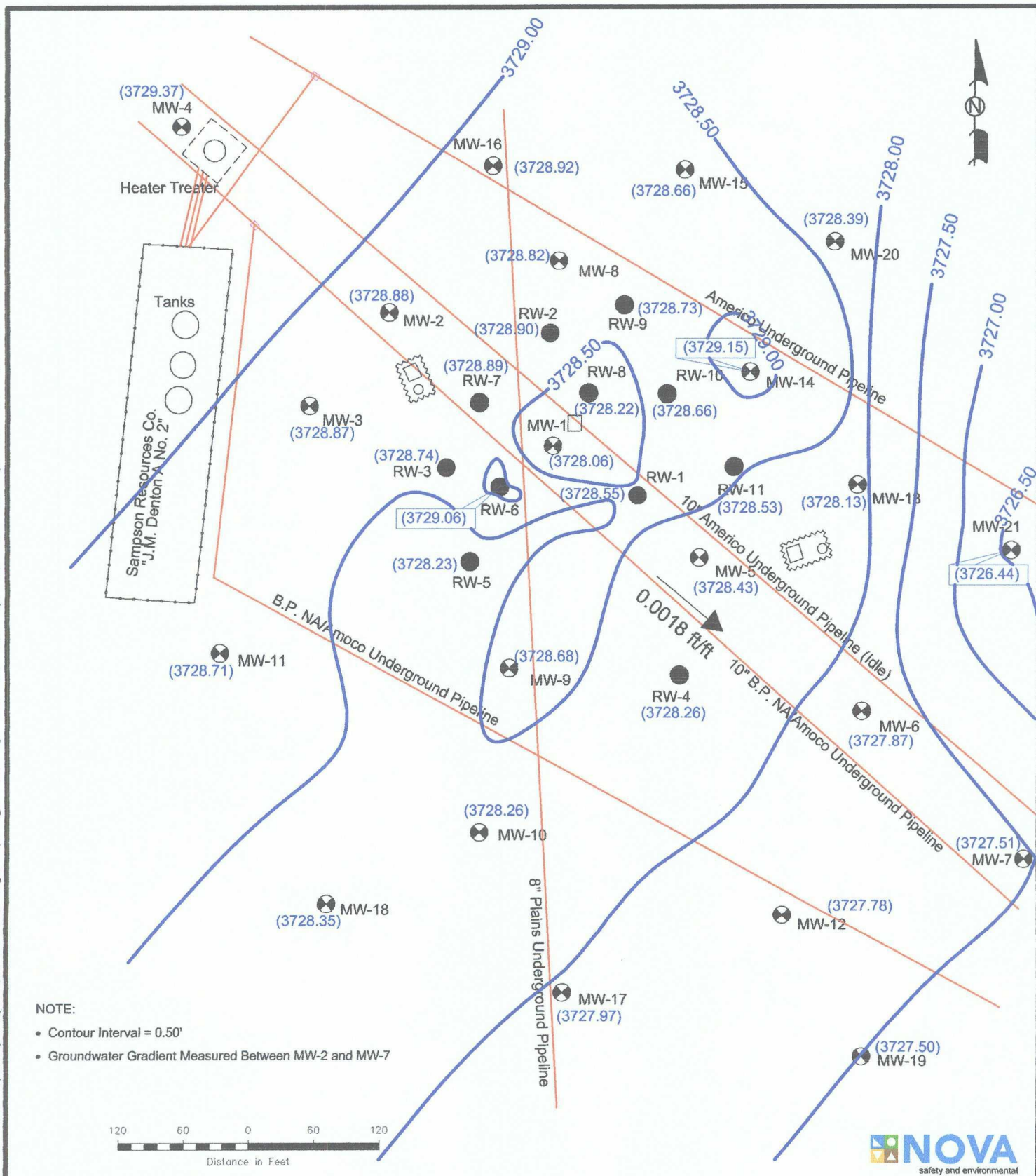
Figure 2B  
Inferred Groundwater  
Gradient Map (6/19/06)  
Plains Marketing, L.P.  
Darr Angell #1  
Lea County, NM

NOVA Safety and Environmental

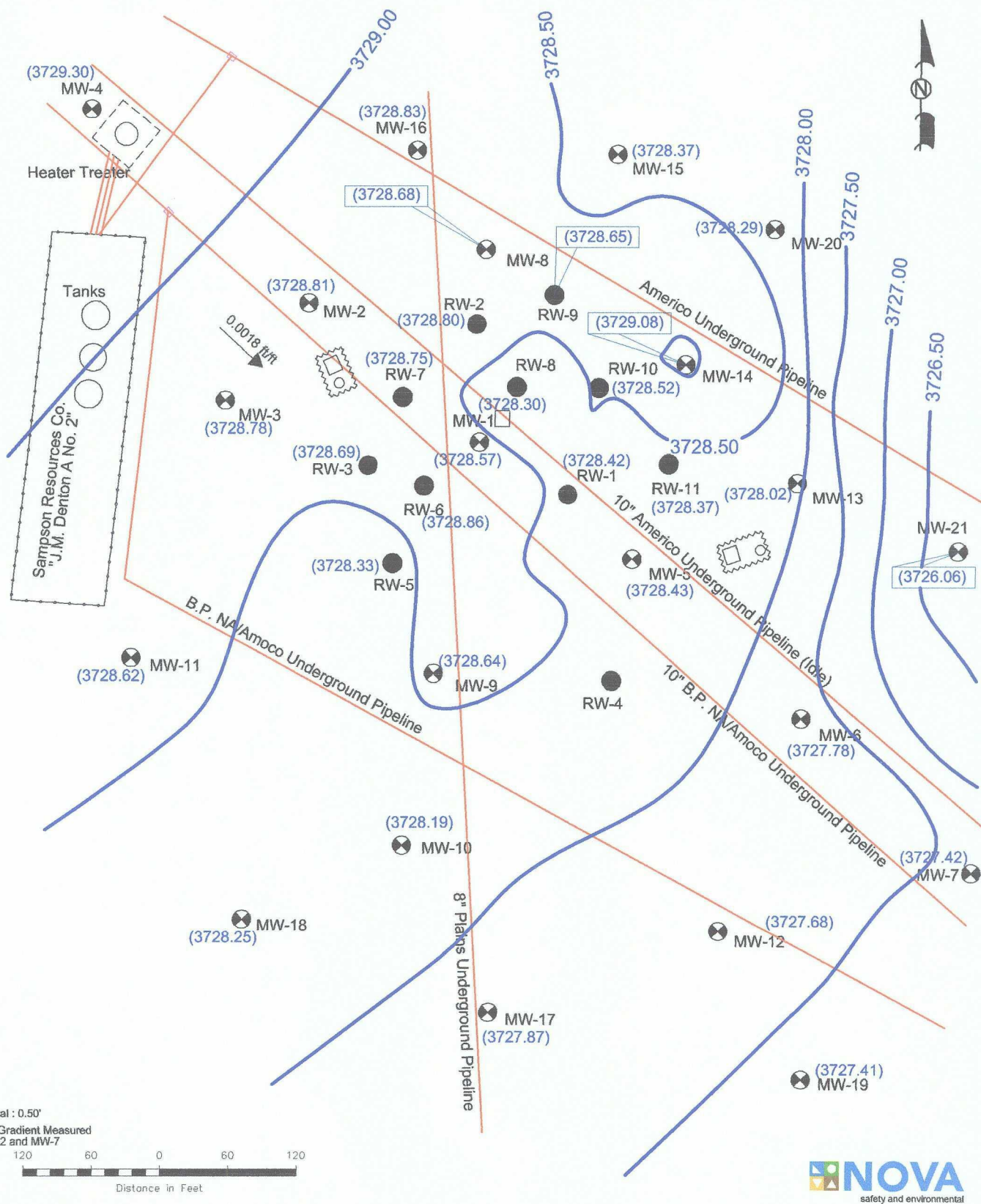
NW1/4 SE1/4 Sec 11 T15S R37E	33° 01' 36.0"N 103° 10' 00.7"W
Scale: 1"=120'	CAD By: DGC
July 12, 2006	Checked By: CDS

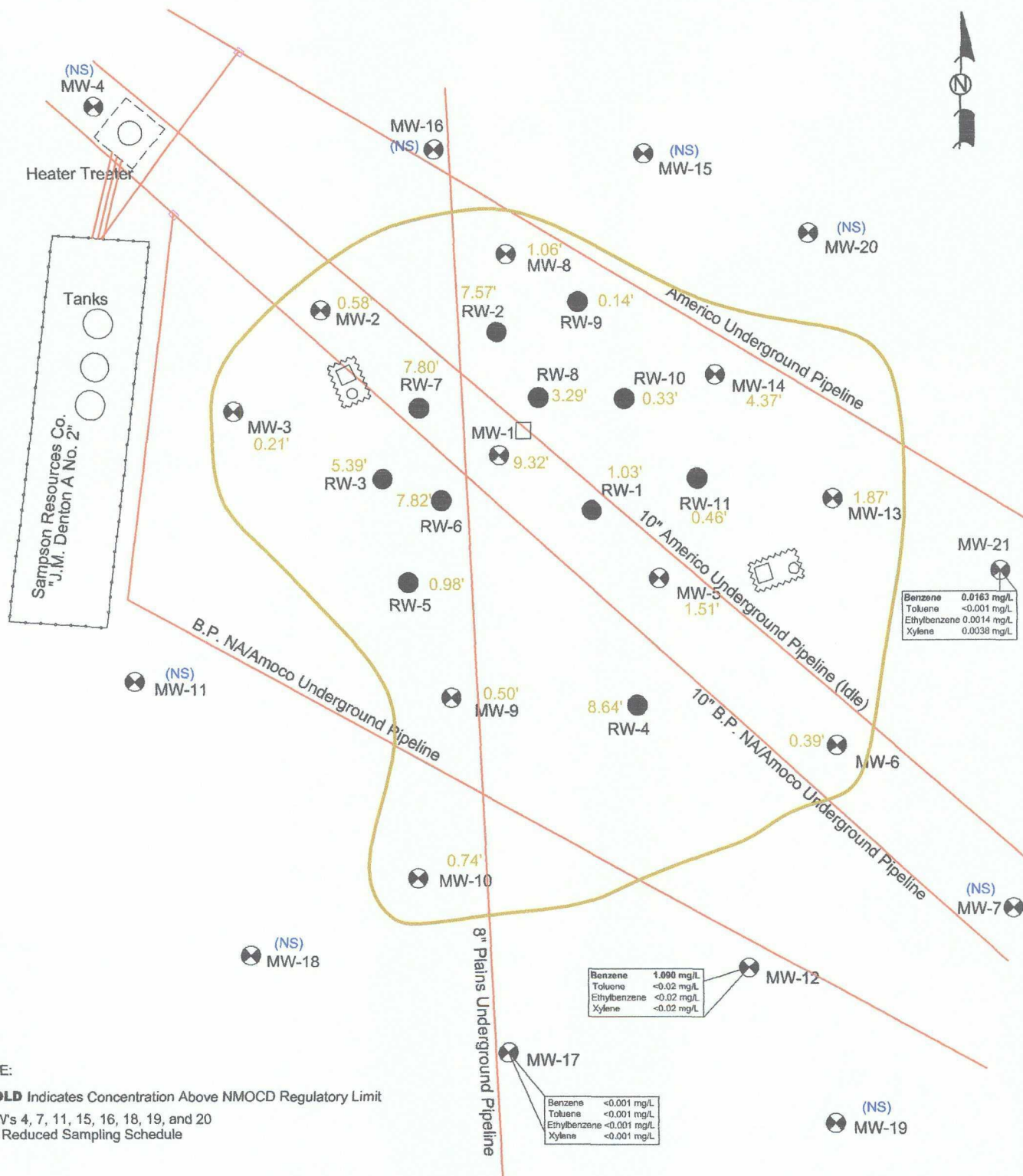






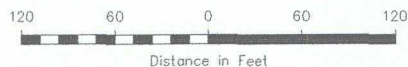






**NOTE:**

- **BOLD** Indicates Concentration Above NMOCD Regulatory Limit
- MW's 4, 7, 11, 15, 16, 18, 19, and 20 on Reduced Sampling Schedule



**LEGEND:**

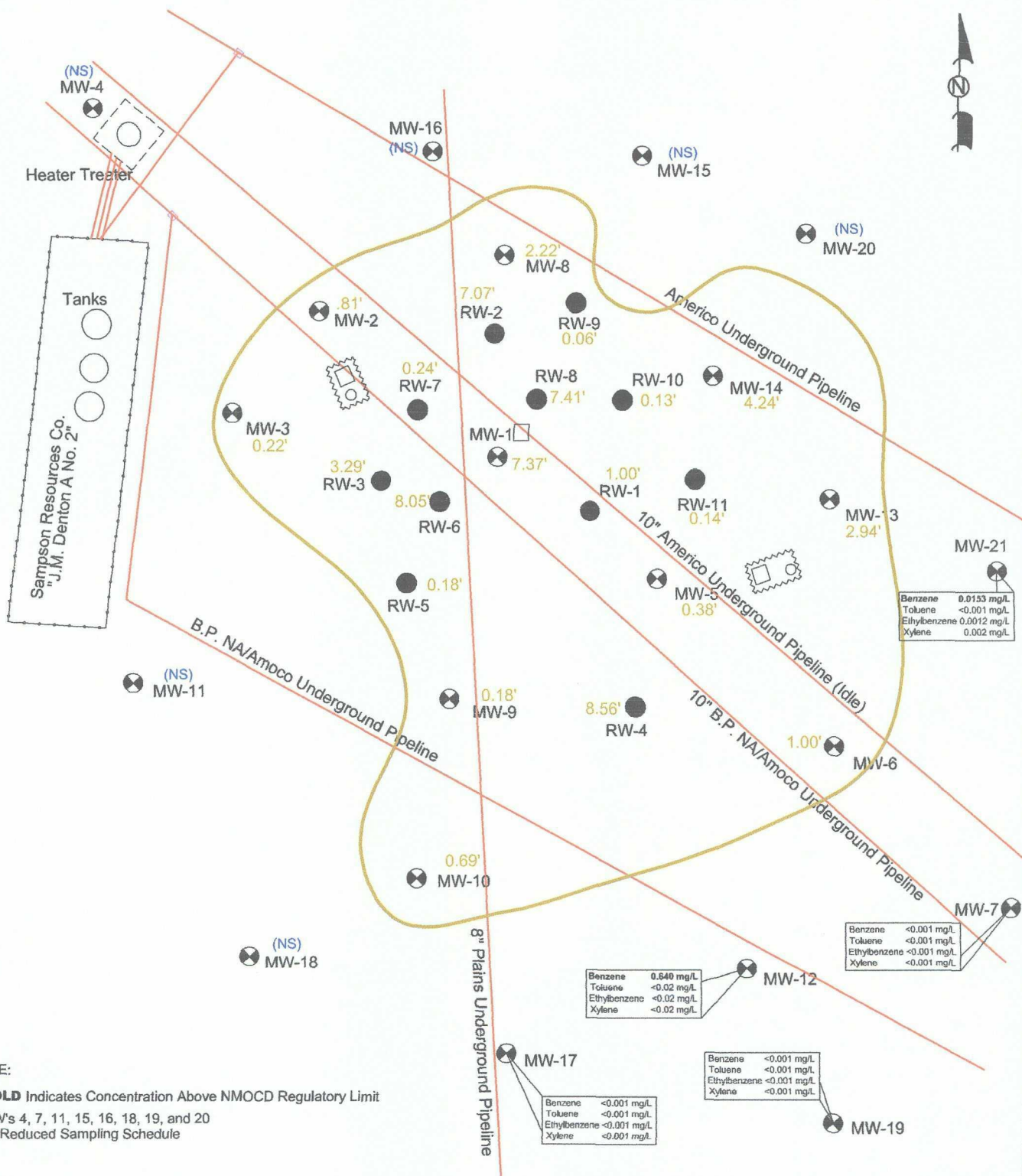
- ⊗ Monitor Well Location
- Recovery Well Location
- Product/Recovery Line
- Inferred PSH Extent
- <0.001 Constituent Concentration (mg/L)
- 9.42'** Thickness of PSH (feet)
- ⬡ Bermed Containment Area
- Shed
- Poly Tank
- (NS) Not Sampled

**Figure 3A**  
Groundwater Concentration  
and Inferred PSH Extent  
Map (3/22/06)  
Plains Marketing, L.P.  
Darr Angell #1  
Lea County, NM

**NOVA Safety and Environmental**

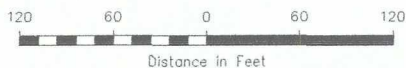
NW1/4 SE1/4 Sec 11 T15S R37E		33° 01' 36.0"N 103° 10' 00.7"W	
Scale: 1"=120'	CAD By: DGC	Checked By: CDS	
May 22, 2006			





**NOTE:**

- **BOLD** Indicates Concentration Above NMOCD Regulatory Limit
- MW's 4, 7, 11, 15, 16, 18, 19, and 20 on Reduced Sampling Schedule



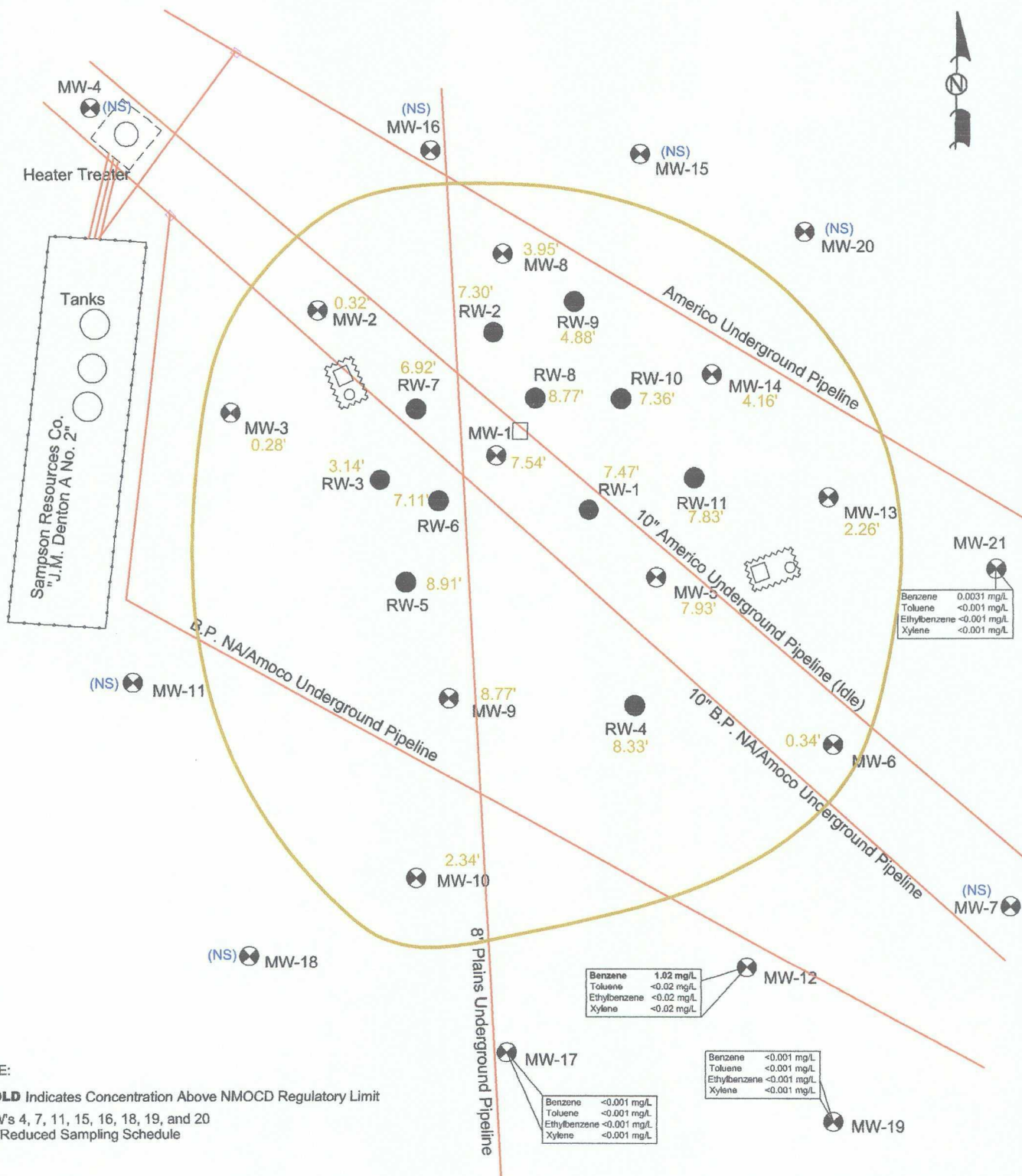
**LEGEND:**

- ⊗ Monitor Well Location
- Recovery Well Location
- - - Product/Recovery Line
- - - Inferred PSH Extent
- <0.001 Constituent Concentration (mg/L)
- 9.42' Thickness of PSH (feet)
- ⬡ Bermed Containment Area
- Shed
- Poly Tank
- (NS) Not Sampled

**Figure 3B**  
Groundwater Concentration and Inferred PSH Extent Map (06/19/06)  
Plains Marketing, L.P.  
Darr Angell #1  
Lea County, NM

**NOVA Safety and Environmental**

NW1/4 SE1/4 Sec 11 T15S R37E		33° 01' 36.0"N 103° 10' 00.7"W	
Scale: 1"=120'	CAD By: DGC	Checked By: CDS	
July 24, 2006			







# TABLES

**TABLE 1**  
**2006 GROUNDWATER ELEVATION DATA**

Plains Marketing, L.P.  
Darr Angel #1  
Lea County, New Mexico

WELL NUMBER	DATE MEASURED	TOP OF CASING ELEVATION	DEPTH TO PRODUCT	DEPTH TO WATER	PSH THICKNESS	CORRECTED GROUNDWATER ELEVATION
MW-1	01/04/06	3787.62	57.02	66.31	9.29	3729.21
	01/11/06	3787.62	57.03	66.31	9.28	3729.20
	01/13/06	3787.62	57.11	66.00	8.89	3729.18
	01/17/06	3787.62	57.07	66.18	9.11	3729.18
	01/19/06	3787.62	57.12	65.96	8.84	3729.17
	01/25/06	3787.62	57.07	66.27	9.20	3729.17
	01/27/06	3787.62	57.13	65.94	8.81	3729.17
	01/31/06	3787.62	57.09	66.16	9.07	3729.17
	02/02/06	3787.62	57.12	65.92	8.80	3729.18
	02/07/06	3787.62	57.07	66.29	9.22	3729.17
	02/09/06	3787.62	57.16	66.18	9.02	3729.11
	02/14/06	3787.62	57.18	66.31	9.13	3729.07
	02/16/06	3787.62	57.12	66.24	9.12	3729.13
	02/22/06	3787.62	57.08	66.32	9.24	3729.15
	02/23/06	3787.62	57.11	66.30	9.19	3729.13
	02/28/06	3787.62	57.08	66.29	9.21	3729.16
	03/02/06	3787.62	57.16	65.96	8.80	3729.14
	03/14/06	3787.62	57.15	66.28	9.13	3729.10
	03/22/06	3787.62	57.12	66.35	9.23	3729.12
	03/28/06	3787.62	57.14	66.31	9.17	3729.10
	03/31/06	3787.62	56.74	65.98	9.24	3729.49
	04/05/06	3787.62	57.15	66.37	9.22	3729.09
	04/12/06	3787.62	57.16	66.35	9.19	3729.08
	04/18/06	3787.62	57.27	66.34	9.07	3728.99
	04/20/06	3787.62	57.18	66.01	8.83	3729.12
	04/25/06	3787.62	58.17	66.37	8.20	3728.22
	05/02/06	3787.62	57.19	66.38	9.19	3729.05
	05/04/06	3787.62	57.21	66.03	8.82	3729.09
	05/09/06	3787.62	57.18	66.30	9.12	3729.07
	05/11/06	3787.62	57.25	66.03	8.78	3729.05
	05/16/06	3787.62	57.22	66.31	9.09	3729.04
	05/18/06	3787.62	57.23	66.25	9.02	3729.04
	05/23/06	3787.62	57.58	64.79	7.21	3728.96
	05/31/06	3787.62	57.61	62.02	4.41	3729.35
	06/06/06	3787.62	58.13	65.47	7.34	3728.39
	06/13/06	3787.62	58.18	63.19	5.01	3728.69
	06/19/06	3787.62	57.59	64.96	7.37	3728.92
	07/18/06	3787.62	61.00	61.07	0.07	3726.61
	07/25/06	3787.62	58.73	59.14	0.41	3728.83
	08/07/06	3787.62	60.49	61.95	1.46	3726.91

**TABLE 1**  
**2006 GROUNDWATER ELEVATION DATA**

Plains Marketing, L.P.  
Darr Angel #1  
Lea County, New Mexico

WELL NUMBER	DATE MEASURED	TOP OF CASING ELEVATION	DEPTH TO PRODUCT	DEPTH TO WATER	PSH THICKNESS	CORRECTED GROUNDWATER ELEVATION
MW-1	08/30/06	3787.62	58.70	61.23	2.53	3728.54
	09/13/06	3787.62	57.75	65.14	7.39	3728.76
	09/19/06	3787.62	58.43	65.97	7.54	3728.06
	09/20/06	3787.62	57.65	65.25	7.60	3728.83
	09/26/06	3787.62	58.11	63.28	5.17	3728.73
	09/29/06	3787.62	57.25	65.46	8.21	3729.14
	10/03/06	3787.62	59.53	62.43	2.90	3727.66
	10/05/06	3787.62	58.83	65.50	6.67	3727.79
	10/13/06	3787.62	57.80	65.20	7.40	3728.71
	10/18/06	3787.62	59.56	61.84	2.28	3727.72
	10/24/06	3787.62	60.22	62.11	1.89	3727.12
	10/27/06	3787.62	58.63	66.18	7.55	3727.86
	10/31/06	3787.62	57.72	65.34	7.62	3728.76
	11/14/06	3787.62	57.93	65.35	7.42	3728.58
	11/17/06	3787.62	59.65	66.40	6.75	3726.96
	11/21/06	3787.62	57.95	66.26	8.31	3728.42
	11/28/06	3787.62	58.49	66.97	8.48	3727.86
	12/07/06	3787.62	57.81	66.09	8.28	3728.57
	12/12/06	3787.62	58.10	66.52	8.42	3728.26
MW-2	01/04/06	3788.19	58.84	59.55	0.71	3729.24
	01/11/06	3788.19	58.91	59.32	0.41	3729.22
	01/17/06	3788.19	58.86	59.57	0.71	3729.22
	01/25/06	3788.19	58.81	59.85	1.04	3729.22
	01/31/06	3788.19	58.93	59.38	0.45	3729.19
	02/07/06	3788.19	58.94	59.38	0.44	3729.18
	02/14/06	3788.19	58.93	59.34	0.41	3729.20
	02/22/06	3788.19	58.94	59.27	0.33	3729.20
	02/28/06	3788.19	58.96	59.30	0.34	3729.18
	03/14/06	3788.19	59.02	59.30	0.28	3729.13
	03/22/06	3788.19	58.97	59.55	0.58	3729.13
	03/28/06	3788.19	58.92	59.74	0.82	3729.15
	04/05/06	3788.19	59.00	59.41	0.41	3729.13
	04/12/06	3788.19	58.94	59.71	0.77	3729.13
	04/18/06	3788.19	58.91	59.95	1.04	3729.12
	04/25/06	3788.19	59.03	59.46	0.43	3729.10
	05/02/06	3788.19	59.03	59.45	0.42	3729.10
	05/09/06	3788.19	59.02	59.55	0.53	3729.09
	05/16/06	3788.19	59.08	59.43	0.35	3729.06
	05/23/06	3788.19	59.03	59.64	0.61	3729.07



**TABLE 1**  
**2006 GROUNDWATER ELEVATION DATA**

Plains Marketing, L.P.  
Darr Angel #1  
Lea County, New Mexico

WELL NUMBER	DATE MEASURED	TOP OF CASING ELEVATION	DEPTH TO PRODUCT	DEPTH TO WATER	PSH THICKNESS	CORRECTED GROUNDWATER ELEVATION
MW-2	05/31/06	3788.19	59.13	59.72	0.59	3728.97
	06/06/06	3788.19	58.98	60.00	1.02	3729.06
	06/13/06	3788.19	59.07	59.66	0.59	3729.03
	06/19/06	3788.19	59.02	59.83	0.81	3729.05
	07/18/06	3788.19	59.07	59.98	0.91	3728.98
	07/21/06	3788.19	60.28	64.39	4.11	3727.29
	07/25/06	3788.19	59.11	59.63	0.52	3729.00
	08/07/06	3788.19	59.14	59.71	0.57	3728.96
	08/30/06	3788.19	59.11	60.13	1.02	3728.93
	09/13/06	3788.19	59.15	59.93	0.78	3728.92
	09/19/06	3788.19	59.26	59.58	0.32	3728.88
	09/26/06	3788.19	59.27	59.55	0.28	3728.88
	09/29/06	3788.19	59.48	59.61	0.13	3728.69
	10/03/06	3788.19	59.30	59.60	0.30	3728.85
	10/05/06	3788.19	59.25	59.54	0.29	3728.90
	10/13/06	3788.19	59.23	59.81	0.58	3728.87
	10/18/06	3788.19	59.25	59.87	0.62	3728.85
	10/24/06	3788.19	59.27	59.90	0.63	3728.83
	10/27/06	3788.19	59.27	59.80	0.53	3728.84
	10/31/06	3788.19	59.23	59.90	0.67	3728.86
	11/03/06	3788.19	59.30	59.65	0.35	3728.84
	11/14/06	3788.19	59.31	59.55	0.24	3728.84
	11/17/06	3788.19	59.35	59.55	0.20	3728.81
	11/21/06	3788.19	59.33	59.62	0.29	3728.82
	11/28/06	3788.19	59.31	59.71	0.40	3728.82
	12/07/06	3788.19	59.30	59.82	0.52	3728.81
	12/12/06	3788.19	59.40	59.60	0.20	3728.76
MW-3	01/04/06	3789.03	59.75	60.23	0.48	3729.21
	01/11/06	3789.03	59.73	60.39	0.66	3729.20
	01/17/06	3789.03	59.72	60.52	0.80	3729.19
	01/25/06	3789.03	59.80	60.13	0.33	3729.18
	01/31/06	3789.03	59.83	60.07	0.24	3729.16
	02/07/06	3789.03	59.81	60.23	0.42	3729.16
	02/14/06	3789.03	59.83	60.14	0.31	3729.15
	02/22/06	3789.03	59.84	60.04	0.20	3729.16
	02/28/06	3789.03	59.84	60.06	0.22	3729.16
	03/14/06	3789.03	59.90	60.09	0.19	3729.10
	03/22/06	3789.03	59.88	60.09	0.21	3729.12
	03/28/06	3789.03	59.85	60.35	0.50	3729.11

**TABLE 1**  
**2006 GROUNDWATER ELEVATION DATA**

Plains Marketing, L.P.  
Darr Angel #1  
Lea County, New Mexico

WELL NUMBER	DATE MEASURED	TOP OF CASING ELEVATION	DEPTH TO PRODUCT	DEPTH TO WATER	PSH THICKNESS	CORRECTED GROUNDWATER ELEVATION
MW-3	04/05/06	3789.03	59.90	60.24	0.34	3729.08
	04/12/06	3789.03	59.87	60.34	0.47	3729.09
	04/18/06	3789.03	59.85	60.46	0.61	3729.09
	04/25/06	3789.03	59.93	60.07	0.14	3729.08
	05/02/06	3789.03	59.93	60.24	0.31	3729.05
	05/09/06	3789.03	59.91	60.35	0.44	3729.05
	05/16/06	3789.03	59.96	60.18	0.22	3729.04
	05/23/06	3789.03	59.94	60.52	0.58	3729.00
	05/31/06	3789.03	59.98	60.56	0.58	3728.96
	06/06/06	3789.03	59.95	60.35	0.40	3729.02
	06/13/06	3789.03	59.98	60.30	0.32	3729.00
	06/19/06	3789.03	60.00	60.22	0.22	3729.00
	07/18/06	3789.03	59.55	61.28	1.73	3729.22
	07/21/06	3789.03	61.01	62.78	1.77	3727.75
	07/25/06	3789.03	59.96	60.55	0.59	3728.98
	08/07/06	3789.03	60.03	60.41	0.38	3728.94
	08/30/06	3789.03	60.11	60.52	0.41	3728.86
	09/19/06	3789.03	60.12	60.40	0.28	3728.87
	09/20/06	3789.03	60.12	60.43	0.31	3728.86
	09/26/06	3789.03	60.15	60.37	0.22	3728.85
	09/29/06	3789.03	60.14	61.37	1.23	3728.71
	10/03/06	3789.03	60.20	60.40	0.20	3728.80
	10/05/06	3789.03	60.13	60.40	0.27	3728.86
	10/13/06	3789.03	60.14	60.54	0.40	3728.83
	10/18/06	3789.03	60.15	60.51	0.36	3728.83
	10/24/06	3789.03	60.14	60.59	0.45	3728.82
	10/27/06	3789.03	60.15	60.58	0.43	3728.82
	10/31/06	3789.03	60.13	60.61	0.48	3728.83
	11/03/06	3789.03	60.17	60.46	0.29	3728.82
	11/14/06	3789.03	60.19	60.31	0.12	3728.82
	11/17/06	3789.03	60.22	60.37	0.15	3728.79
	11/21/06	3789.03	60.22	60.38	0.16	3728.79
	11/28/06	3789.03	60.22	60.44	0.22	3728.78
	12/07/06	3789.03	60.21	60.49	0.28	3728.78
	12/12/06	3789.03	60.28	60.45	0.17	3728.72
MW-4	03/22/06	3790.06	-	60.44	0.00	3729.62
	06/19/06	3790.06	-	60.55	0.00	3729.51
	09/19/06	3790.06	-	60.69	0.00	3729.37
	12/07/06	3790.06	-	60.76	0.00	3729.30

**TABLE 1**  
**2006 GROUNDWATER ELEVATION DATA**

Plains Marketing, L.P.  
Darr Angel #1  
Lea County, New Mexico

WELL NUMBER	DATE MEASURED	TOP OF CASING ELEVATION	DEPTH TO PRODUCT	DEPTH TO WATER	PSH THICKNESS	CORRECTED GROUNDWATER ELEVATION
MW-5	01/04/06	3787.47	58.80	59.46	0.66	3728.57
	01/11/06	3787.47	58.87	59.63	0.76	3728.49
	01/17/06	3787.47	58.96	59.77	0.81	3728.39
	01/25/06	3787.47	58.91	59.97	1.06	3728.40
	01/31/06	3787.47	58.68	59.74	1.06	3728.63
	02/07/06	3787.47	58.29	62.15	3.86	3728.60
	02/14/06	3787.47	58.75	60.04	1.29	3728.53
	02/22/06	3787.47	58.23	62.26	4.03	3728.64
	02/28/06	3787.47	58.65	60.01	1.36	3728.62
	03/14/06	3787.47	59.79	60.89	1.10	3727.52
	03/22/06	3787.47	58.75	60.26	1.51	3728.49
	03/28/06	3787.47	58.90	59.70	0.80	3728.45
	04/05/06	3787.47	58.95	59.43	0.48	3728.45
	04/12/06	3787.47	58.91	59.32	0.41	3728.50
	04/18/06	3787.47	58.99	59.18	0.19	3728.45
	04/25/06	3787.47	58.94	60.10	1.16	3728.36
	05/02/06	3787.47	58.98	60.08	1.10	3728.33
	05/09/06	3787.47	58.95	60.02	1.07	3728.36
	05/16/06	3787.47	59.00	59.18	0.18	3728.44
	05/23/06	3787.47	58.97	59.38	0.41	3728.44
	05/31/06	3787.47	59.00	59.30	0.30	3728.43
	06/06/06	3787.47	59.03	59.42	0.39	3728.38
	06/13/06	3787.47	59.06	59.39	0.33	3728.36
	06/19/06	3787.47	59.03	59.41	0.38	3728.38
	07/18/06	3787.47	59.04	59.45	0.41	3728.37
	07/25/06	3787.47	59.28	59.94	0.66	3728.09
	08/07/06	3787.47	59.06	59.46	0.40	3728.35
	08/30/06	3787.47	59.07	59.61	0.54	3728.32
	09/13/06	3787.47	57.78	65.64	7.86	3728.51
	09/19/06	3787.47	57.85	65.78	7.93	3728.43
	09/20/06	3787.47	57.80	65.76	7.96	3728.48
	09/26/06	3787.47	60.74	61.00	0.26	3726.69
	10/03/06	3787.47	59.10	59.28	0.18	3728.34
	10/05/06	3787.47	59.08	59.89	0.81	3728.27
	10/13/06	3787.47	59.04	60.04	1.00	3728.28
	10/18/06	3787.47	57.86	65.59	7.73	3728.45
	10/24/06	3787.47	57.79	66.02	8.23	3728.45
	10/27/06	3787.47	57.98	65.05	7.07	3728.43
	10/31/06	3787.47	57.77	66.02	8.25	3728.46

**TABLE 1**  
**2006 GROUNDWATER ELEVATION DATA**

Plains Marketing, L.P.  
Darr Angel #1  
Lea County, New Mexico

WELL NUMBER	DATE MEASURED	TOP OF CASING ELEVATION	DEPTH TO PRODUCT	DEPTH TO WATER	PSH THICKNESS	CORRECTED GROUNDWATER ELEVATION
MW-5	11/03/06	3787.47	57.93	65.26	7.33	3728.44
	11/14/06	3787.47	57.90	65.44	7.54	3728.44
	11/17/06	3787.47	58.38	67.38	9.00	3727.74
	11/21/06	3787.47	57.90	65.54	7.64	3728.42
	11/28/06	3787.47	57.80	66.06	8.26	3728.43
	12/07/06	3787.47	57.79	66.11	8.32	3728.43
	12/12/06	3787.47	57.80	66.25	8.45	3728.40
	12/14/06	3787.47	58.15	64.75	6.60	3728.33
MW-6	01/04/06	3786.81	58.56	59.16	0.60	3728.16
	01/11/06	3786.81	58.86	59.24	0.38	3727.89
	01/17/06	3786.81	58.74	59.37	0.63	3727.98
	01/25/06	3786.81	58.64	59.56	0.92	3728.03
	01/31/06	3786.81	58.26	58.48	0.22	3728.52
	02/07/06	3786.81	58.32	58.54	0.22	3728.46
	02/14/06	3786.81	58.37	59.93	1.56	3728.21
	02/22/06	3786.81	58.47	58.66	0.19	3728.31
	02/28/06	3786.81	58.50	58.70	0.20	3728.28
	03/14/06	3786.81	58.61	59.15	0.54	3728.12
	03/22/06	3786.81	58.64	59.03	0.39	3728.11
	03/28/06	3786.81	58.61	59.15	0.54	3728.12
	04/05/06	3786.81	58.68	59.00	0.32	3728.08
	04/12/06	3786.81	58.64	59.12	0.48	3728.10
	04/18/06	3786.81	58.65	59.24	0.59	3728.07
	04/25/06	3786.81	58.71	59.00	0.29	3728.06
	05/02/06	3786.81	58.75	59.02	0.27	3728.02
	05/16/06	3786.81	58.69	59.00	0.31	3728.07
	05/23/06	3786.81	58.72	59.05	0.33	3728.04
	05/31/06	3786.81	58.62	59.19	0.57	3728.10
	06/06/06	3786.81	58.68	59.30	0.62	3728.04
	06/13/06	3786.81	58.73	59.20	0.47	3728.01
	06/19/06	3786.81	58.72	59.72	1.00	3727.94
	07/18/06	3786.81	58.72	59.43	0.71	3727.98
	07/25/06	3786.81	58.80	59.81	1.01	3727.86
	08/07/06	3786.81	58.80	59.35	0.55	3727.93
	08/30/06	3786.81	58.81	59.49	0.68	3727.90
	09/13/06	3786.81	58.84	59.39	0.55	3727.89
	09/19/06	3786.81	58.89	59.23	0.34	3727.87
	09/20/06	3786.81	58.85	59.20	0.35	3727.91
	09/26/06	3786.81	58.95	59.19	0.24	3727.82

**TABLE 1**  
**2006 GROUNDWATER ELEVATION DATA**

Plains Marketing, L.P.  
Darr Angel #1  
Lea County, New Mexico

WELL NUMBER	DATE MEASURED	TOP OF CASING ELEVATION	DEPTH TO PRODUCT	DEPTH TO WATER	PSH THICKNESS	CORRECTED GROUNDWATER ELEVATION
MW-6	09/29/06	3786.81	58.90	59.06	0.16	3727.89
	10/03/06	3786.81	58.90	59.10	0.20	3727.88
	10/05/06	3786.81	58.91	59.03	0.12	3727.88
	10/13/06	3786.81	58.89	59.25	0.36	3727.87
	10/18/06	3786.81	58.92	59.18	0.26	3727.85
	10/24/06	3786.81	58.95	59.24	0.29	3727.82
	10/27/06	3786.81	58.95	59.14	0.19	3727.83
	10/31/06	3786.81	58.94	59.20	0.26	3727.83
	11/03/06	3786.81	58.95	59.16	0.21	3727.83
	11/14/06	3786.81	59.00	59.14	0.14	3727.79
	11/17/06	3786.81	58.99	59.15	0.16	3727.80
	11/21/06	3786.81	58.99	59.18	0.19	3727.79
	11/28/06	3786.81	58.95	59.30	0.35	3727.81
	12/07/06	3786.81	58.98	59.30	0.32	3727.78
	12/12/06	3786.81	59.05	59.13	0.08	3727.75
MW-7	03/22/06	3786.82	-	59.10	0.00	3727.72
	06/19/06	3786.82	-	59.19	0.00	3727.63
	09/19/06	3786.82	-	59.31	0.00	3727.51
	12/07/06	3786.82	-	59.40	0.00	3727.42
MW-8	01/04/06	3788.24	58.94	60.21	1.27	3729.11
	01/11/06	3788.24	58.94	60.24	1.30	3729.11
	01/17/06	3788.24	58.90	60.32	1.42	3729.13
	01/25/06	3788.24	58.83	60.99	2.16	3729.09
	01/31/06	3788.24	59.01	60.12	1.11	3729.06
	02/07/06	3788.24	59.03	60.13	1.10	3729.05
	02/14/06	3788.24	59.02	60.10	1.08	3729.06
	02/22/06	3788.24	58.99	60.33	1.34	3729.05
	02/28/06	3788.24	58.96	60.43	1.47	3729.06
	03/14/06	3788.24	59.12	59.88	0.76	3729.01
	03/22/06	3788.24	59.08	60.14	1.06	3729.00
	03/28/06	3788.24	59.08	60.05	0.97	3729.01
	04/05/06	3788.24	59.10	60.26	1.16	3728.97
	04/12/06	3788.24	59.12	60.09	0.97	3728.97
	04/18/06	3788.24	59.01	60.67	1.66	3728.98
	04/25/06	3788.24	59.14	60.10	0.96	3728.96
	05/02/06	3788.24	59.14	60.17	1.03	3728.95
	05/09/06	3788.24	59.12	60.12	1.00	3728.97
	05/16/06	3788.24	58.64	59.43	0.79	3729.48

**TABLE 1**  
**2006 GROUNDWATER ELEVATION DATA**

Plains Marketing, L.P.  
Darr Angel #1  
Lea County, New Mexico

WELL NUMBER	DATE MEASURED	TOP OF CASING ELEVATION	DEPTH TO PRODUCT	DEPTH TO WATER	PSH THICKNESS	CORRECTED GROUNDWATER ELEVATION
MW-8	05/23/06	3788.24	58.63	59.54	0.91	3729.47
	05/31/06	3788.24	58.66	59.45	0.79	3729.46
	06/06/06	3788.24	58.47	59.22	0.75	3729.66
	06/13/06	3788.24	58.59	59.30	0.71	3729.54
	06/19/06	3788.24	58.17	60.39	2.22	3729.74
	07/18/06	3788.24	58.98	61.44	2.46	3728.89
	07/25/06	3788.24	59.21	60.33	1.12	3728.86
	08/07/06	3788.24	59.16	60.73	1.57	3728.84
	08/30/06	3788.24	59.10	60.66	1.56	3728.91
	09/19/06	3788.24	58.83	62.78	3.95	3728.82
	10/05/06	3788.24	58.65	63.59	4.94	3728.85
	10/13/06	3788.24	58.60	63.95	5.35	3728.84
	10/18/06	3788.24	59.25	60.95	1.70	3728.74
	10/24/06	3788.24	59.16	61.60	2.44	3728.71
	10/27/06	3788.24	59.45	60.15	0.70	3728.69
	10/31/06	3788.24	59.34	60.53	1.19	3728.72
	11/03/06	3788.24	59.43	60.20	0.77	3728.69
	11/14/06	3788.24	59.44	60.14	0.70	3728.70
	11/17/06	3788.24	59.48	60.05	0.57	3728.67
	11/21/06	3788.24	59.45	60.18	0.73	3728.68
	11/28/06	3788.24	59.38	60.49	1.11	3728.69
	12/07/06	3788.24	59.35	60.75	1.40	3728.68
	12/12/06	3788.24	59.40	60.58	1.18	3728.66
MW-9	01/04/06	3788.33	58.01	66.67	8.66	3729.02
	01/11/06	3788.33	57.96	66.88	8.92	3729.03
	01/17/06	3788.33	58.01	66.75	8.74	3729.01
	01/25/06	3788.33	59.51	59.61	0.10	3728.81
	01/31/06	3788.33	59.56	59.68	0.12	3728.75
	02/07/06	3788.33	59.58	59.76	0.18	3728.72
	02/14/06	3788.33	59.60	59.66	0.06	3728.72
	02/22/06	3788.33	59.55	59.73	0.18	3728.75
	02/28/06	3788.33	59.61	59.72	0.11	3728.70
	03/14/06	3788.33	59.63	59.78	0.15	3728.68
	03/22/06	3788.33	59.58	60.08	0.50	3728.68
	03/28/06	3788.33	58.19	66.31	8.12	3728.92
	04/05/06	3788.33	59.68	59.74	0.06	3728.64
	04/12/06	3788.33	59.64	59.78	0.14	3728.67
	04/18/06	3788.33	59.42	60.84	1.42	3728.70
	04/25/06	3788.33	59.70	59.74	0.04	3728.62

**TABLE 1**  
**2006 GROUNDWATER ELEVATION DATA**

Plains Marketing, L.P.  
Darr Angel #1  
Lea County, New Mexico

WELL NUMBER	DATE MEASURED	TOP OF CASING ELEVATION	DEPTH TO PRODUCT	DEPTH TO WATER	PSH THICKNESS	CORRECTED GROUNDWATER ELEVATION
MW-9	05/02/06	3788.33	59.66	59.80	0.14	3728.65
	05/09/06	3788.33	59.71	59.75	0.04	3728.61
	05/16/06	3788.33	59.70	59.77	0.07	3728.62
	05/23/06	3788.33	59.72	59.77	0.05	3728.60
	05/31/06	3788.33	59.74	59.83	0.09	3728.58
	06/06/06	3788.33	59.71	59.78	0.07	3728.61
	06/13/06	3788.33	59.74	59.83	0.09	3728.58
	06/19/06	3788.33	59.69	59.87	0.18	3728.61
	07/18/06	3788.33	58.21	67.03	8.82	3728.80
	07/25/06	3788.33	59.58	59.67	0.09	3728.74
	08/07/06	3788.33	58.19	67.07	8.88	3728.81
	08/30/06	3788.33	58.10	67.00	8.90	3728.90
	09/13/06	3788.33	58.30	67.10	8.80	3728.71
	09/19/06	3788.33	58.32	67.19	8.87	3728.68
	09/20/06	3788.33	58.25	67.17	8.92	3728.74
	09/26/06	3788.33	59.62	60.99	1.37	3728.50
	09/29/06	3788.33	58.98	64.13	5.15	3728.58
	10/03/06	3788.33	59.02	63.72	4.70	3728.61
	10/05/06	3788.33	58.65	65.90	7.25	3728.59
	10/13/06	3788.33	58.33	67.05	8.72	3728.69
	10/18/06	3788.33	59.49	61.98	2.49	3728.47
	10/24/06	3788.33	58.99	64.45	5.46	3728.52
	10/27/06	3788.33	58.49	66.65	8.16	3728.62
	10/31/06	3788.33	58.33	67.06	8.73	3728.69
	11/14/06	3788.33	58.33	67.15	8.82	3728.68
	11/17/06	3788.33	58.38	67.23	8.85	3728.62
	11/21/06	3788.33	58.33	67.13	8.80	3728.68
	11/28/06	3788.33	58.41	67.10	8.69	3728.62
	12/07/06	3788.33	58.38	67.11	8.73	3728.64
	12/12/06	3788.33	58.50	66.85	8.35	3728.58
MW-10	01/04/06	3788.46	59.80	60.64	0.84	3728.53
	01/11/06	3788.46	59.85	60.94	1.09	3728.45
	01/17/06	3788.46	59.80	60.74	0.94	3728.52
	01/25/06	3788.46	59.76	60.96	1.20	3728.52
	01/31/06	3788.46	59.85	60.99	1.14	3728.44
	02/07/06	3788.46	59.78	60.93	1.15	3728.51
	02/14/06	3788.46	59.83	60.68	0.85	3728.50
	02/22/06	3788.46	59.85	60.61	0.76	3728.50
	02/28/06	3788.46	59.82	60.58	0.76	3728.53

**TABLE 1**  
**2006 GROUNDWATER ELEVATION DATA**

Plains Marketing, L.P.  
Darr Angel #1  
Lea County, New Mexico

WELL NUMBER	DATE MEASURED	TOP OF CASING ELEVATION	DEPTH TO PRODUCT	DEPTH TO WATER	PSH THICKNESS	CORRECTED GROUNDWATER ELEVATION
MW-10	03/14/06	3788.46	59.90	60.61	0.71	3728.45
	03/22/06	3788.46	59.92	60.66	0.74	3728.43
	03/28/06	3788.46	59.87	60.81	0.94	3728.45
	04/05/06	3788.46	59.80	60.80	1.00	3728.51
	04/12/06	3788.46	59.93	60.69	0.76	3728.42
	04/18/06	3788.46	59.94	60.64	0.70	3728.42
	04/25/06	3788.46	59.94	60.68	0.74	3728.41
	05/02/06	3788.46	60.21	60.92	0.71	3728.14
	05/09/06	3788.46	59.87	60.01	0.14	3728.57
	05/16/06	3788.46	59.97	60.57	0.60	3728.40
	05/23/06	3788.46	59.98	60.61	0.63	3728.39
	05/31/06	3788.46	60.02	60.65	0.63	3728.35
	06/06/06	3788.46	59.89	61.21	1.32	3728.37
	06/13/06	3788.46	59.98	60.82	0.84	3728.35
	06/19/06	3788.46	60.00	60.69	0.69	3728.36
	07/18/06	3788.46	59.94	61.20	1.26	3728.33
	08/07/06	3788.46	59.96	61.28	1.32	3728.30
	08/30/06	3788.46	59.90	61.20	1.30	3728.37
	09/19/06	3788.46	59.85	62.19	2.34	3728.26
	12/07/06	3788.46	59.56	64.27	4.71	3728.19
MW-11	03/22/06	3789.55		60.61	0.00	3728.94
	06/19/06	3789.55		60.71	0.00	3728.84
	09/19/06	3789.55		60.84	0.00	3728.71
	12/07/06	3789.55		60.93	0.00	3728.62
MW-12	03/22/06	3787.81	-	59.83	0.00	3727.98
	06/19/06	3787.81	-	60.92	0.00	3726.89
	09/19/06	3787.81	-	60.03	0.00	3727.78
	12/07/06	3787.81	-	60.13	0.00	3727.68
MW-13	01/04/06	3788.55	59.96	61.74	1.78	3728.32
	01/11/06	3788.55	60.12	61.83	1.71	3728.17
	01/17/06	3788.55	60.18	62.03	1.85	3728.09
	01/25/06	3788.55	59.97	62.25	2.28	3728.24
	01/31/06	3788.55	59.23	63.32	4.09	3728.71
	02/07/06	3788.55	59.36	63.18	3.82	3728.62
	02/14/06	3788.55	59.51	63.33	3.82	3728.47
	02/22/06	3788.55	59.64	63.32	3.68	3728.36
	02/28/06	3788.55	59.68	63.31	3.63	3728.33



**TABLE 1**  
**2006 GROUNDWATER ELEVATION DATA**

Plains Marketing, L.P.  
Darr Angel #1  
Lea County, New Mexico

WELL NUMBER	DATE MEASURED	TOP OF CASING ELEVATION	DEPTH TO PRODUCT	DEPTH TO WATER	PSH THICKNESS	CORRECTED GROUNDWATER ELEVATION
MW-13	03/14/06	3788.55	59.91	61.65	1.74	3728.38
	03/22/06	3788.55	59.91	61.78	1.87	3728.36
	03/28/06	3788.55	59.95	61.49	1.54	3728.37
	04/05/06	3788.55	59.90	61.83	1.93	3728.36
	04/12/06	3788.55	59.98	61.15	1.17	3728.39
	04/18/06	3788.55	60.01	61.36	1.35	3728.34
	04/25/06	3788.55	59.99	61.66	1.67	3728.31
	05/02/06	3788.55	60.02	61.42	1.40	3728.32
	05/09/06	3788.55	60.00	61.38	1.38	3728.34
	05/16/06	3788.55	59.65	63.32	3.67	3728.35
	05/23/06	3788.55	58.66	63.14	4.48	3729.22
	05/31/06	3788.55	59.38	63.31	3.93	3728.58
	06/06/06	3788.55	59.88	62.32	2.44	3728.30
	06/13/06	3788.55	59.89	62.21	2.32	3728.31
	06/19/06	3788.55	59.82	62.76	2.94	3728.29
	07/25/06	3788.55	60.03	61.49	1.46	3728.30
	08/07/06	3788.55	59.75	63.28	3.53	3728.27
	08/30/06	3788.55	59.70	63.28	3.58	3728.31
	09/13/06	3788.55	59.95	62.81	2.86	3728.17
	09/19/06	3788.55	60.08	62.34	2.26	3728.13
	09/20/06	3788.55	60.05	62.79	2.74	3728.09
	09/26/06	3788.55	59.96	62.89	2.93	3728.15
	09/29/06	3788.55	60.35	61.11	0.76	3728.09
	10/03/06	3788.55	60.32	61.29	0.97	3728.08
	10/05/06	3788.55	60.35	61.04	0.69	3728.10
	10/13/06	3788.55	60.15	62.01	1.86	3728.12
	10/18/06	3788.55	60.31	61.48	1.17	3728.06
	10/24/06	3788.55	60.32	61.49	1.17	3728.05
	10/27/06	3788.55	60.39	61.14	0.75	3728.05
	10/31/06	3788.55	60.30	61.52	1.22	3728.07
	11/03/06	3788.55	Well Obstructed			
	11/14/06	3788.55	60.45	61.10	0.65	3728.00
	11/17/06	3788.55	60.40	61.21	0.81	3728.03
	11/21/06	3788.55	60.37	61.32	0.95	3728.04
	11/28/06	3788.55	60.30	61.77	1.47	3728.03
	12/07/06	3788.55	60.27	61.98	1.71	3728.02
	12/12/06	3788.55	60.34	62.23	1.89	3727.93
MW-14	01/04/06	3788.72	58.69	63.00	4.31	3729.38
	01/11/06	3788.72	58.63	63.12	4.49	3729.42

**TABLE 1**  
**2006 GROUNDWATER ELEVATION DATA**

Plains Marketing, L.P.  
Darr Angel #1  
Lea County, New Mexico

WELL NUMBER	DATE MEASURED	TOP OF CASING ELEVATION	DEPTH TO PRODUCT	DEPTH TO WATER	PSH THICKNESS	CORRECTED GROUNDWATER ELEVATION
MW-14	01/17/06	3788.72	58.50	63.00	4.50	3729.55
	01/25/06	3788.72	58.67	63.09	4.42	3729.39
	01/31/06	3788.72	58.66	63.12	4.46	3729.39
	02/07/06	3788.72	58.67	63.04	4.37	3729.39
	02/14/06	3788.72	58.66	63.07	4.41	3729.40
	02/22/06	3788.72	58.48	63.07	4.59	3729.55
	02/28/06	3788.72	58.45	63.06	4.61	3729.58
	03/14/06	3788.72	58.72	63.12	4.40	3729.34
	03/22/06	3788.72	58.72	63.09	4.37	3729.34
	03/28/06	3788.72	58.73	63.12	4.39	3729.33
	04/05/06	3788.72	59.77	63.15	3.38	3728.44
	04/12/06	3788.72	58.74	63.10	4.36	3729.33
	04/18/06	3788.72	58.76	63.12	4.36	3729.31
	04/25/06	3788.72	58.77	63.09	4.32	3729.30
	05/02/06	3788.72	58.69	63.01	4.32	3729.38
	05/09/06	3788.72	58.72	62.98	4.26	3729.36
	05/16/06	3788.72	58.79	63.12	4.33	3729.28
	05/23/06	3788.72	58.81	63.10	4.29	3729.27
	05/31/06	3788.72	58.83	63.10	4.27	3729.25
	06/06/06	3788.72	58.67	63.01	4.34	3729.40
	06/13/06	3788.72	58.70	63.02	4.32	3729.37
	06/19/06	3788.72	58.81	63.05	4.24	3729.27
	07/25/06	3788.72	58.84	63.11	4.27	3729.24
	08/07/06	3788.72	58.85	63.11	4.26	3729.23
	08/30/06	3788.72	59.90	63.13	3.23	3728.34
	09/13/06	3788.72	58.91	63.15	4.24	3729.17
	09/19/06	3788.72	58.95	63.11	4.16	3729.15
	09/20/06	3788.72	58.95	63.12	4.17	3729.14
	09/26/06	3788.72	58.93	63.15	4.22	3729.16
	09/29/06	3788.72	58.11	63.50	5.39	3729.80
	10/03/06	3788.72	59.01	63.16	4.15	3729.09
	10/05/06	3788.72	59.41	63.13	3.72	3728.75
	10/13/06	3788.72	58.58	63.15	4.57	3729.45
	10/18/06	3788.72	59.01	63.15	4.14	3729.09
	10/24/06	3788.72	59.00	63.14	4.14	3729.10
	10/27/06	3788.72	59.08	63.15	4.07	3729.03
	10/31/06	3788.72	59.00	63.15	4.15	3729.10
	11/03/06	3788.72	59.06	63.15	4.09	3729.05
	11/14/06	3788.72	59.04	63.13	4.09	3729.07
	11/17/06	3788.72	59.15	63.14	3.99	3728.97

**TABLE 1**  
**2006 GROUNDWATER ELEVATION DATA**

Plains Marketing, L.P.  
Darr Angel #1  
Lea County, New Mexico

WELL NUMBER	DATE MEASURED	TOP OF CASING ELEVATION	DEPTH TO PRODUCT	DEPTH TO WATER	PSH THICKNESS	CORRECTED GROUNDWATER ELEVATION
MW-14	11/21/06	3788.72	59.05	63.13	4.08	3729.06
	11/28/06	3788.72	59.04	63.11	4.07	3729.07
	12/07/06	3788.72	59.04	63.02	3.98	3729.08
	12/12/06	3788.72	59.28	63.03	3.75	3728.88
MW-15	03/22/06	3788.95	-	60.06	0.00	3728.89
	06/19/06	3788.95	-	60.16	0.00	3728.79
	09/19/06	3788.95	-	60.29	0.00	3728.66
	12/07/06	3788.95	-	60.58	0.00	3728.37
MW-16	03/22/06	3789.61	-	60.47	0.00	3729.14
	06/19/06	3789.61	-	60.57	0.00	3729.04
	09/19/06	3789.61	-	60.69	0.00	3728.92
	12/07/06	3789.61	-	60.78	0.00	3728.83
MW-17	03/22/06	3787.95	-	59.77	0.00	3728.18
	06/19/06	3787.95	-	59.87	0.00	3728.08
	09/19/06	3787.95	-	59.98	0.00	3727.97
	12/07/06	3787.95	-	60.08	0.00	3727.87
MW-18	03/22/06	3788.82	-	60.26	0.00	3728.56
	06/19/06	3788.82	-	60.35	0.00	3728.47
	09/19/06	3788.82	-	60.47	0.00	3728.35
	12/07/06	3788.82	-	60.57	0.00	3728.25
MW-19	03/22/06	3787.51	-	59.79	0.00	3727.72
	06/19/06	3787.51	-	59.89	0.00	3727.62
	09/19/06	3787.51	-	60.01	0.00	3727.50
	12/07/06	3787.51	-	60.10	0.00	3727.41
MW-20	03/22/06	3788.53	-	59.92	0.00	3728.61
	06/19/06	3788.53	-	60.01	0.00	3728.52
	09/19/06	3788.53	-	60.14	0.00	3728.39
	12/07/06	3788.53	-	60.24	0.00	3728.29
MW-21	03/22/06	3786.46	-	59.79	0.00	3726.67
	06/19/06	3786.46	-	59.89	0.00	3726.57
	09/19/06	3786.46	-	60.02	0.00	3726.44
	12/07/06	3786.46	-	60.40	0.00	3726.06

**TABLE 1**  
**2006 GROUNDWATER ELEVATION DATA**

Plains Marketing, L.P.  
Darr Angel #1  
Lea County, New Mexico

WELL NUMBER	DATE MEASURED	TOP OF CASING ELEVATION	DEPTH TO PRODUCT	DEPTH TO WATER	PSH THICKNESS	CORRECTED GROUNDWATER ELEVATION
RW-1	01/04/06	3788.33	60.59	60.60	0.01	3727.74
	01/11/06	3788.33	60.58	60.59	0.01	3727.75
	01/17/06	3788.33	60.57	60.58	0.01	3727.76
	01/25/06	3788.33	58.12	66.74	8.62	3728.92
	01/31/06	3788.33	58.00	66.65	8.65	3729.03
	02/07/06	3788.33	58.72	66.64	7.92	3728.42
	02/09/06	3788.33	60.23	60.48	0.25	3728.06
	02/14/06	3788.33	60.14	61.28	1.14	3728.02
	02/22/06	3788.33	59.09	66.51	7.42	3728.13
	02/28/06	3788.33	58.74	66.60	7.86	3728.41
	03/14/06	3788.33	58.80	66.88	8.08	3728.32
	03/22/06	3788.33	59.52	60.55	1.03	3728.66
	03/28/06	3788.33	59.54	60.28	0.74	3728.68
	04/05/06	3788.33	60.57	61.05	0.48	3727.69
	04/12/06	3788.33	58.94	66.61	7.67	3728.24
	04/18/06	3788.33	59.45	61.03	1.58	3728.64
	04/25/06	3788.33	59.51	65.31	5.80	3727.95
	05/02/06	3788.33	59.75	61.08	1.33	3728.38
	05/09/06	3788.33	59.75	61.06	1.31	3728.38
	05/16/06	3788.33	59.80	64.12	4.32	3727.88
	05/23/06	3788.33	58.09	64.97	6.88	3729.21
	05/31/06	3788.33	58.18	66.18	8.00	3728.95
	06/06/06	3788.33	59.63	60.32	0.69	3728.60
	06/13/06	3788.33	59.67	64.12	4.45	3727.99
	06/19/06	3788.33	59.64	60.64	1.00	3728.54
	07/18/06	3788.33	SHEEN	60.21	0.00	3728.12
	07/25/06	3788.33	SHEEN	60.03	0.00	3728.30
	08/07/06	3788.33	60.10	60.63	0.53	3728.15
	08/30/06	3788.33	59.69	61.05	1.36	3728.44
	09/13/06	3788.33	58.95	66.45	7.50	3728.26
	09/19/06	3788.33	58.66	66.13	7.47	3728.55
	09/20/06	3788.33	58.66	66.13	7.47	3728.55
	09/26/06	3788.33	58.59	66.10	7.51	3728.61
	09/29/06	3788.33	59.54	66.08	6.54	3727.81
	10/03/06	3788.33	57.81	64.84	7.03	3729.47
	10/05/06	3788.33	57.71	65.10	7.39	3729.51
	10/13/06	3788.33	58.74	66.23	7.49	3728.47
	10/18/06	3788.33	61.63	61.80	0.17	3726.67
	10/24/06	3788.33	60.60	60.75	0.15	3727.71
	10/27/06	3788.33	59.23	64.32	5.09	3728.34

**TABLE 1**  
**2006 GROUNDWATER ELEVATION DATA**

Plains Marketing, L.P.  
Darr Angel #1  
Lea County, New Mexico

WELL NUMBER	DATE MEASURED	TOP OF CASING ELEVATION	DEPTH TO PRODUCT	DEPTH TO WATER	PSH THICKNESS	CORRECTED GROUNDWATER ELEVATION
RW-1	10/30/06	3788.33	58.81	66.08	7.27	3728.43
	11/17/06	3788.33	60.59	60.80	0.21	3727.71
	11/21/06	3788.33	60.14	60.61	0.47	3728.12
	11/28/06	3788.33	60.57	60.78	0.21	3727.73
	12/07/06	3788.33	58.85	65.90	7.05	3728.42
RW-2	01/04/06	3788.98	58.59	66.29	7.70	3729.24
	01/11/06	3788.98	58.59	66.28	7.69	3729.24
	01/13/06	3788.98	59.09	64.03	4.94	3729.15
	01/17/06	3788.98	58.77	65.47	6.70	3729.21
	01/19/06	3788.98	59.13	63.81	4.68	3729.15
	01/25/06	3788.98	58.69	66.01	7.32	3729.19
	01/27/06	3788.98	59.17	63.76	4.59	3729.12
	01/31/06	3788.98	58.69	66.01	7.32	3729.19
	02/02/06	3788.98	58.79	65.19	6.40	3729.23
	02/07/06	3788.98	58.66	66.15	7.49	3729.20
	02/09/06	3788.98	58.86	66.43	7.57	3728.98
	02/14/06	3788.98	58.65	66.15	7.50	3729.21
	02/16/06	3788.98	58.94	66.51	7.57	3728.90
	02/22/06	3788.98	58.64	66.26	7.62	3729.20
	02/23/06	3788.98	58.76	66.18	7.42	3729.11
	02/28/06	3788.98	58.70	66.02	7.32	3729.18
	03/02/06	3788.98	59.17	63.94	4.77	3729.09
	03/14/06	3788.98	58.80	65.78	6.98	3729.13
	03/22/06	3788.98	58.71	66.28	7.57	3729.13
	03/28/06	3788.98	58.80	65.86	7.06	3729.12
	03/31/06	3788.98	59.18	66.12	6.94	3728.76
	04/05/06	3788.98	58.75	66.30	7.55	3729.10
	04/12/06	3788.98	58.77	66.20	7.43	3729.10
	04/18/06	3788.98	59.79	65.98	6.19	3728.26
	04/20/06	3788.98	59.75	65.89	6.14	3728.31
	04/25/06	3788.98	58.88	66.16	7.28	3729.01
	05/02/06	3788.98	58.79	66.18	7.39	3729.08
	05/04/06	3788.98	59.77	65.81	6.04	3728.30
	05/09/06	3788.98	58.80	66.15	7.35	3729.08
	05/11/06	3788.98	59.30	63.83	4.53	3729.00
	05/16/06	3788.98	58.81	66.19	7.38	3729.06
	05/18/06	3788.98	58.76	66.36	7.60	3729.08
	05/23/06	3788.98	58.80	66.25	7.45	3729.06
	05/26/06	3788.98	59.10	64.96	5.86	3729.00

**TABLE 1**  
**2006 GROUNDWATER ELEVATION DATA**

Plains Marketing, L.P.  
Darr Angel #1  
Lea County, New Mexico

WELL NUMBER	DATE MEASURED	TOP OF CASING ELEVATION	DEPTH TO PRODUCT	DEPTH TO WATER	PSH THICKNESS	CORRECTED GROUNDWATER ELEVATION
RW-2	05/31/06	3788.98	58.95	65.64	6.69	3729.03
	06/06/06	3788.98	58.78	66.34	7.56	3729.07
	06/08/06	3788.98	59.30	64.50	5.20	3728.90
	06/13/06	3788.98	58.94	65.80	6.86	3729.01
	06/19/06	3788.98	58.91	65.98	7.07	3729.01
	07/18/06	3788.98	58.82	66.51	7.69	3729.01
	07/25/06	3788.98	58.90	66.00	7.10	3729.02
	08/07/06	3788.98	58.80	66.45	7.65	3729.03
	08/30/06	3788.98	58.88	66.50	7.62	3728.96
	09/13/06	3788.98	58.88	66.50	7.62	3728.96
	09/19/06	3788.98	58.99	66.29	7.30	3728.90
	09/20/06	3788.98	58.94	66.45	7.51	3728.91
	09/26/06	3788.98	59.01	66.25	7.24	3728.88
	09/29/06	3788.98	59.13	65.66	6.53	3728.87
	10/04/06	3788.98	59.11	65.84	6.73	3728.86
	10/05/06	3788.98	59.56	64.09	4.53	3728.74
	10/13/06	3788.98	58.99	66.66	7.67	3728.84
	10/18/06	3788.98	59.15	65.99	6.84	3728.80
	10/24/06	3788.98	59.06	65.55	6.49	3728.95
	10/27/06	3788.98	59.26	64.70	5.44	3728.90
	10/31/06	3788.98	59.03	66.02	6.99	3728.90
	11/03/06	3788.98	59.40	64.70	5.30	3728.79
	11/14/06	3788.98	59.33	65.14	5.81	3728.78
	11/17/06	3788.98	59.53	64.35	4.82	3728.73
	11/21/06	3788.98	59.36	64.08	4.72	3728.91
	11/28/06	3788.98	59.14	66.10	6.96	3728.80
	12/07/06	3788.98	59.07	66.50	7.43	3728.80
	12/12/06	3788.98	59.01	66.74	7.73	3728.81
RW-3	01/04/06	3788.95	58.92	64.71	5.79	3729.16
	01/11/06	3788.95	58.91	64.70	5.79	3729.17
	01/13/06	3788.95	59.65	61.50	1.85	3729.02
	01/17/06	3788.95	59.43	62.51	3.08	3729.06
	01/19/06	3788.95	59.64	61.45	1.81	3729.04
	01/25/06	3788.95	59.19	63.63	4.44	3729.09
	01/27/06	3788.95	59.66	61.46	1.80	3729.02
	01/31/06	3788.95	59.46	62.40	2.94	3729.05
	02/02/06	3788.95	59.68	61.45	1.77	3729.00
	02/07/06	3788.95	59.34	62.99	3.65	3729.06
	02/09/06	3788.95	59.18	63.04	3.86	3729.19

**TABLE 1**  
**2006 GROUNDWATER ELEVATION DATA**

Plains Marketing, L.P.  
Darr Angel #1  
Lea County, New Mexico

WELL NUMBER	DATE MEASURED	TOP OF CASING ELEVATION	DEPTH TO PRODUCT	DEPTH TO WATER	PSH THICKNESS	CORRECTED GROUNDWATER ELEVATION
RW-3	02/14/06	3788.95	59.09	64.14	5.05	3729.10
	02/16/06	3788.95	59.11	63.44	4.33	3729.19
	02/22/06	3788.95	59.00	64.54	5.54	3729.12
	02/23/06	3788.95	59.16	64.64	5.48	3728.97
	02/28/06	3788.95	59.25	63.48	4.23	3729.07
	03/02/06	3788.95	59.73	61.33	1.60	3728.98
	03/14/06	3788.95	59.42	62.79	3.37	3729.02
	03/22/06	3788.95	59.09	64.48	5.39	3729.05
	03/28/06	3788.95	59.40	63.09	3.69	3729.00
	03/31/06	3788.95	59.64	61.87	2.23	3728.98
	04/05/06	3788.95	59.50	62.70	3.20	3728.97
	04/12/06	3788.95	59.27	63.70	4.43	3729.02
	04/18/06	3788.95	59.42	63.14	3.72	3728.97
	04/20/06	3788.95	59.38	63.02	3.64	3729.02
	04/25/06	3788.95	59.32	63.63	4.31	3728.98
	05/02/06	3788.95	59.34	63.62	4.28	3728.97
	05/04/06	3788.95	59.41	62.98	3.57	3729.00
	05/09/06	3788.95	59.35	62.85	3.50	3729.08
	05/11/06	3788.95	59.84	61.29	1.45	3728.89
	05/16/06	3788.95	59.61	62.47	2.86	3728.91
	05/18/06	3788.95	59.67	62.19	2.52	3728.90
	05/23/06	3788.95	59.45	63.14	3.69	3728.95
	05/26/06	3788.95	59.69	61.94	2.25	3728.92
	05/31/06	3788.95	59.66	62.45	2.79	3728.87
	06/06/06	3788.95	59.48	62.22	2.74	3729.06
	06/08/06	3788.95	59.09	61.93	2.84	3729.43
	06/13/06	3788.95	59.53	63.04	3.51	3728.89
	06/19/06	3788.95	59.58	62.87	3.29	3728.88
	07/18/06	3788.95	58.75	66.75	8.00	3729.00
	07/25/06	3788.95	59.83	61.80	1.97	3728.82
	08/07/06	3788.95	59.10	65.18	6.08	3728.94
	08/30/06	3788.95	58.80	67.04	8.24	3728.91
	09/13/06	3788.95	59.15	65.50	6.35	3728.85
	09/19/06	3788.95	59.74	62.88	3.14	3728.74
	09/20/06	3788.95	59.63	63.21	3.58	3728.78
	09/26/06	3788.95	59.72	63.01	3.29	3728.74
	09/29/06	3788.95	60.00	61.69	1.69	3728.70
	10/04/06	3788.95	59.90	62.18	2.28	3728.71
	10/05/06	3788.95	60.12	61.20	1.08	3728.67
	10/13/06	3788.95	59.53	64.00	4.47	3728.75

**TABLE 1**  
**2006 GROUNDWATER ELEVATION DATA**

Plains Marketing, L.P.  
Darr Angel #1  
Lea County, New Mexico

WELL NUMBER	DATE MEASURED	TOP OF CASING ELEVATION	DEPTH TO PRODUCT	DEPTH TO WATER	PSH THICKNESS	CORRECTED GROUNDWATER ELEVATION
RW-3	10/18/06	3788.95	59.95	62.24	2.29	3728.66
	10/24/06	3788.95	59.95	62.54	2.59	3728.61
	10/27/06	3788.95	60.08	61.55	1.47	3728.65
	10/31/06	3788.95	59.80	62.91	3.11	3728.68
	11/03/06	3788.95	60.10	61.52	1.42	3728.64
	11/14/06	3788.95	60.04	61.80	1.76	3728.65
	11/17/06	3788.95	60.14	61.48	1.34	3728.61
	11/21/06	3788.95	60.06	61.83	1.77	3728.62
	11/28/06	3788.95	59.86	62.82	2.96	3728.65
	12/07/06	3788.95	59.69	63.50	3.81	3728.69
	12/12/06	3788.95	59.42	64.84	5.42	3728.72
RW-4	01/04/06	3788.15	59.86	61.02	1.16	3728.12
	01/11/06	3788.15	59.94	61.24	1.30	3728.02
	01/17/06	3788.15	60.01	61.30	1.29	3727.95
	01/25/06	3788.15	60.11	61.42	1.31	3727.84
	01/31/06	3788.15	58.47	66.50	8.03	3728.48
	02/07/06	3788.15	58.46	66.82	8.36	3728.44
	02/14/06	3788.15	58.55	66.83	8.28	3728.36
	02/22/06	3788.15	58.33	66.81	8.48	3728.55
	02/28/06	3788.15	58.38	67.03	8.65	3728.47
	03/14/06	3788.15	58.44	67.04	8.60	3728.42
	03/22/06	3788.15	58.39	67.03	8.64	3728.46
	03/28/06	3788.15	58.43	67.22	8.79	3728.40
	04/05/06	3788.15	58.42	67.05	8.63	3728.44
	04/12/06	3788.15	58.42	67.04	8.62	3728.44
	04/18/06	3788.15	58.40	67.04	8.64	3728.45
	04/25/06	3788.15	58.44	67.08	8.64	3728.41
	05/02/06	3788.15	58.44	67.06	8.62	3728.42
	05/09/06	3788.15	58.45	66.98	8.53	3728.42
	05/16/06	3788.15	58.88	67.01	8.13	3728.05
	05/23/06	3788.15	58.44	67.02	8.58	3728.42
	05/31/06	3788.15	58.46	66.85	8.39	3728.43
	06/06/06	3788.15	58.48	67.09	8.61	3728.38
	06/13/06	3788.15	58.49	67.09	8.60	3728.37
	06/19/06	3788.15	58.52	67.08	8.56	3728.35
	07/25/06	3788.15	58.50	67.08	8.58	3728.36
	08/07/06	3788.15	58.54	67.09	8.55	3728.33
	08/30/06	3788.15	58.34	67.09	8.75	3728.50
	09/13/06	3788.15	58.35	72.13	13.78	3727.73



**TABLE 1**  
**2006 GROUNDWATER ELEVATION DATA**

Plains Marketing, L.P.  
Darr Angel #1  
Lea County, New Mexico

WELL NUMBER	DATE MEASURED	TOP OF CASING ELEVATION	DEPTH TO PRODUCT	DEPTH TO WATER	PSH THICKNESS	CORRECTED GROUNDWATER ELEVATION
RW-4	09/19/06	3788.15	58.61	67.16	8.55	3728.26
	09/20/06	3788.15	58.60	70.85	12.25	3727.71
	09/26/06	3788.15	58.60	70.85	12.25	3727.71
	09/29/06	3788.15	58.73	67.10	8.37	3728.16
	10/03/06	3788.15	59.23	66.00	6.77	3727.90
	10/05/06	3788.15	58.98	66.09	7.11	3728.10
	10/13/06	3788.15	58.63	69.90	11.27	3727.83
	10/18/06	3788.15	58.69	70.40	11.71	3727.70
	10/24/06	3788.15	58.67	60.60	1.93	3729.19
	10/27/06	3788.15	58.65	60.60	1.95	3729.21
	11/03/06	3788.15	58.83	66.96	8.13	3728.10
	11/14/06	3788.15	58.74	60.60	1.86	3729.13
	11/17/06	3788.15	58.89	66.77	7.88	3728.08
	11/21/06	3788.15	58.78	66.60	7.82	3728.20
	11/28/06	3788.15	58.71	66.60	7.89	3728.26
	12/08/06	3788.15	60.30	60.95	0.65	3727.75
	12/12/06	3788.15	58.80	66.60	7.80	3728.18
	12/14/06	3788.15	59.07	66.20	7.13	3728.01
RW-5	01/04/06	3788.83	60.31	60.61	0.30	3728.48
	01/11/06	3788.83	60.35	60.65	0.30	3728.44
	01/17/06	3788.83	60.31	60.55	0.24	3728.48
	01/25/06	3788.83	60.37	60.46	0.09	3728.45
	01/31/06	3788.83	60.31	60.54	0.23	3728.49
	02/07/06	3788.83	60.34	60.83	0.49	3728.42
	02/14/06	3788.83	60.44	60.50	0.06	3728.38
	02/22/06	3788.83	60.44	60.69	0.25	3728.35
	02/28/06	3788.83	60.47	60.71	0.24	3728.32
	03/14/06	3788.83	60.41	60.68	0.27	3728.38
	03/22/06	3788.83	60.33	61.31	0.98	3728.35
	03/28/06	3788.83	58.88	67.47	8.59	3728.66
	04/05/06	3788.83	58.92	67.79	8.87	3728.58
	04/12/06	3788.83	60.46	60.74	0.28	3728.33
	04/18/06	3788.83	60.52	60.56	0.04	3728.30
	04/25/06	3788.83	60.54	60.58	0.04	3728.28
	05/02/06	3788.83	60.53	60.74	0.21	3728.27
	05/09/06	3788.83	60.60	60.61	0.01	3728.23
	05/16/06	3788.83	60.60	60.64	0.04	3728.22
	05/23/06	3788.83	60.57	60.69	0.12	3728.24
	05/31/06	3788.83	60.67	60.80	0.13	3728.14

**TABLE 1**  
**2006 GROUNDWATER ELEVATION DATA**

Plains Marketing, L.P.  
Darr Angel #1  
Lea County, New Mexico

WELL NUMBER	DATE MEASURED	TOP OF CASING ELEVATION	DEPTH TO PRODUCT	DEPTH TO WATER	PSH THICKNESS	CORRECTED GROUNDWATER ELEVATION
RW-5	06/06/06	3788.83	60.60	60.70	0.10	3728.22
	06/13/06	3788.83	60.66	60.72	0.06	3728.16
	06/15/06	3788.83	60.53	60.71	0.18	3728.27
	07/18/06	3788.83	60.71	60.79	0.08	3728.11
	07/25/06	3788.83	60.55	60.62	0.07	3728.27
	08/07/06	3788.83	60.68	60.75	0.07	3728.14
	08/30/06	3788.83	60.60	60.85	0.25	3728.19
	09/13/06	3788.83	59.28	67.74	8.46	3728.28
	09/19/06	3788.83	59.03	69.52	10.49	3728.23
	09/20/06	3788.83	59.08	67.65	8.57	3728.46
	09/29/06	3788.83	58.14	59.89	1.75	3730.43
	10/03/06	3788.83	59.12	67.64	8.52	3728.43
	10/05/06	3788.83	59.18	67.72	8.54	3728.37
	10/13/06	3788.83	59.11	67.76	8.65	3728.42
	10/18/06	3788.83	59.31	67.93	8.62	3728.23
	10/24/06	3788.83	59.33	67.98	8.65	3728.20
	10/27/06	3788.83	59.29	67.78	8.49	3728.27
	10/31/06	3788.83	59.15	67.15	8.00	3728.48
	11/14/06	3788.83	59.26	67.97	8.71	3728.26
	11/17/06	3788.83	57.98	65.04	7.06	3729.79
	11/21/06	3788.83	59.25	67.96	8.71	3728.27
	11/28/06	3788.83	59.36	68.09	8.73	3728.16
	12/07/06	3788.83	59.20	67.85	8.65	3728.33
	12/08/06	3788.83	60.87	61.48	0.61	3727.87
	12/12/06	3788.83	59.32	68.09	8.77	3728.19
	12/14/06	3788.83	59.31	68.11	8.80	3728.20
RW-6	01/04/06	3788.93	59.86	60.12	0.26	3729.03
	01/11/06	3788.93	59.94	60.14	0.20	3728.96
	01/17/06	3788.93	59.93	60.12	0.19	3728.97
	01/25/06	3788.93	59.12	66.15	7.03	3728.76
	01/31/06	3788.93	59.15	66.16	7.01	3728.73
	02/07/06	3788.93	59.15	66.15	7.00	3728.73
	02/14/06	3788.93	59.24	66.23	6.99	3728.64
	02/22/06	3788.93	59.21	66.24	7.03	3728.67
	02/28/06	3788.93	58.70	66.25	7.55	3729.10
	03/14/06	3788.93	58.70	66.39	7.69	3729.08
	03/22/06	3788.93	58.47	66.29	7.82	3729.29
	03/28/06	3788.93	58.76	66.13	7.37	3729.06
	04/05/06	3788.93	59.79	66.15	6.36	3728.19

**TABLE 1**  
**2006 GROUNDWATER ELEVATION DATA**

Plains Marketing, L.P.  
Darr Angel #1  
Lea County, New Mexico

WELL NUMBER	DATE MEASURED	TOP OF CASING ELEVATION	DEPTH TO PRODUCT	DEPTH TO WATER	PSH THICKNESS	CORRECTED GROUNDWATER ELEVATION
RW-6	04/12/06	3788.93	58.44	66.25	7.81	3729.32
	04/18/06	3788.93	58.46	66.28	7.82	3729.30
	04/25/06	3788.93	58.48	66.28	7.80	3729.28
	05/02/06	3788.93	58.49	66.25	7.76	3729.28
	05/09/06	3788.93	58.51	66.20	7.69	3729.27
	05/16/06	3788.93	58.61	66.28	7.67	3729.17
	05/23/06	3788.93	58.49	66.56	8.07	3729.23
	05/31/06	3788.93	58.61	66.61	8.00	3729.12
	06/06/06	3788.93	58.51	66.55	8.04	3729.21
	06/13/06	3788.93	58.53	66.53	8.00	3729.20
	06/19/06	3788.93	58.56	66.61	8.05	3729.16
	07/18/06	3788.93	58.71	67.01	8.30	3728.98
	07/25/06	3788.93	58.50	66.59	8.09	3729.22
	08/07/06	3788.93	58.60	65.59	6.99	3729.28
	08/30/06	3788.93	58.62	66.63	8.01	3729.11
	09/13/06	3788.93	58.65	66.65	8.00	3729.08
	09/19/06	3788.93	58.68	66.63	7.95	3729.06
	09/20/06	3788.93	58.65	66.65	8.00	3729.08
	09/26/06	3788.93	58.68	66.65	7.97	3729.05
	09/29/06	3788.93	58.72	67.16	8.44	3728.94
	10/03/06	3788.93	58.70	66.64	7.94	3729.04
	10/05/06	3788.93	58.81	66.66	7.85	3728.94
	10/13/06	3788.93	58.69	66.66	7.97	3729.04
	10/18/06	3788.93	58.71	67.10	8.39	3728.96
	10/24/06	3788.93	58.77	67.15	8.38	3728.90
	10/27/06	3788.93	58.80	67.49	8.69	3728.83
	10/31/06	3788.93	58.73	67.69	8.96	3728.86
	11/03/06	3788.93	58.84	67.40	8.56	3728.81
	11/14/06	3788.93	58.80	67.55	8.75	3728.82
	11/17/06	3788.93	58.90	67.25	8.35	3728.78
	11/21/06	3788.93	58.83	67.54	8.71	3728.79
	11/28/06	3788.93	57.78	67.64	9.86	3729.67
	12/07/06	3788.93	58.76	67.48	8.72	3728.86
	12/08/06	3788.93	61.08	61.65	0.57	3727.76
	12/12/06	3788.93	58.83	67.45	8.62	3728.81
	12/14/06	3788.93	59.06	66.73	7.67	3728.72
RW-7	01/04/06	3789.07	58.59	66.58	7.99	3729.28
	01/11/06	3789.07	58.61	66.61	8.00	3729.26
	01/13/06	3789.07	59.26	63.68	4.42	3729.15

**TABLE 1**  
**2006 GROUNDWATER ELEVATION DATA**

Plains Marketing, L.P.  
Darr Angel #1  
Lea County, New Mexico

WELL NUMBER	DATE MEASURED	TOP OF CASING ELEVATION	DEPTH TO PRODUCT	DEPTH TO WATER	PSH THICKNESS	CORRECTED GROUNDWATER ELEVATION
RW-7	01/17/06	3789.07	59.01	64.84	5.83	3729.19
	01/19/06	3789.07	59.39	63.13	3.74	3729.12
	01/25/06	3789.07	58.79	65.87	7.08	3729.22
	01/27/06	3789.07	59.39	63.28	3.89	3729.10
	01/31/06	3789.07	59.08	64.62	5.54	3729.16
	02/02/06	3789.07	59.46	62.91	3.45	3729.09
	02/07/06	3789.07	58.95	65.23	6.28	3729.18
	02/09/06	3789.07	59.02	65.47	6.45	3729.08
	02/14/06	3789.07	58.75	66.20	7.45	3729.20
	02/16/06	3789.07	59.18	65.66	6.48	3728.92
	02/22/06	3789.07	58.67	66.56	7.89	3729.22
	02/23/06	3789.07	58.96	65.60	6.64	3729.11
	02/28/06	3789.07	58.79	66.04	7.25	3729.19
	03/02/06	3789.07	59.43	63.24	3.81	3729.07
	03/14/06	3789.07	59.00	65.41	6.41	3729.11
	03/22/06	3789.07	58.73	66.53	7.80	3729.17
	03/28/06	3789.07	58.90	65.81	6.91	3729.13
	03/31/06	3789.07	59.25	64.20	4.95	3729.08
	04/12/06	3789.07	58.79	66.45	7.66	3729.13
	04/18/06	3789.07	59.87	66.11	6.24	3728.26
	04/20/06	3789.07	59.82	66.07	6.25	3728.31
	04/25/06	3789.07	58.84	66.30	7.46	3729.11
	05/02/06	3789.07	58.84	66.34	7.50	3729.11
	05/04/06	3789.07	59.83	66.12	6.29	3728.30
	05/09/06	3789.07	58.87	66.38	7.51	3729.07
	05/11/06	3789.07	59.51	63.33	3.82	3728.99
	05/16/06	3789.07	59.04	65.08	6.04	3729.12
	05/18/06	3789.07	59.29	64.53	5.24	3728.99
	05/23/06	3789.07	59.01	63.57	4.56	3729.38
	05/31/06	3789.07	59.10	64.56	5.46	3729.15
	06/06/06	3789.07	60.30	60.35	0.05	3728.76
	06/13/06	3789.07	60.34	60.42	0.08	3728.72
	06/19/06	3789.07	60.65	60.89	0.24	3728.38
	07/18/06	3789.07	60.84	60.88	0.04	3728.22
	07/25/06	3789.07	60.26	60.47	0.21	3728.78
	08/07/06	3789.07	60.59	61.19	0.60	3728.39
	08/30/06	3789.07	60.23	61.80	1.57	3728.60
	09/13/06	3789.07	59.42	66.18	6.76	3728.64
	09/19/06	3789.07	59.14	66.06	6.92	3728.89
	09/20/06	3789.07	59.13	66.13	7.00	3728.89

**TABLE 1**  
**2006 GROUNDWATER ELEVATION DATA**

Plains Marketing, L.P.  
Darr Angel #1  
Lea County, New Mexico

WELL NUMBER	DATE MEASURED	TOP OF CASING ELEVATION	DEPTH TO PRODUCT	DEPTH TO WATER	PSH THICKNESS	CORRECTED GROUNDWATER ELEVATION
RW-7	09/26/06	3789.07	59.46	64.75	5.29	3728.82
	09/29/06	3789.07	59.36	65.65	6.29	3728.77
	10/05/06	3789.07	59.16	66.06	6.90	3728.88
	10/13/06	3789.07	59.27	66.24	6.97	3728.75
	10/18/06	3789.07	60.98	61.74	0.76	3727.98
	10/24/06	3789.07	61.22	61.74	0.52	3727.77
	10/27/06	3789.07	60.09	64.68	4.59	3728.29
	10/31/06	3789.07	59.36	65.36	6.00	3728.81
	11/14/06	3789.07	60.21	61.70	1.49	3728.64
	11/17/06	3789.07	61.68	67.09	5.41	3726.58
	11/21/06	3789.07	Well Obstructed			
	12/07/06	3789.07	59.37	65.68	6.31	3728.75
RW-8	01/04/06	3788.48	58.38	67.02	8.64	3728.80
	01/11/06	3788.48	58.37	67.12	8.75	3728.80
	01/13/06	3788.48	58.56	66.26	7.70	3728.77
	01/17/06	3788.48	58.45	66.72	8.27	3728.79
	01/19/06	3788.48	58.61	66.07	7.46	3728.75
	01/25/06	3788.48	58.43	66.89	8.46	3728.78
	01/27/06	3788.48	58.60	66.17	7.57	3728.74
	01/31/06	3788.48	58.49	66.73	8.24	3728.75
	02/02/06	3788.48	58.95	66.81	7.86	3728.35
	02/07/06	3788.48	59.17	66.12	6.95	3728.27
	02/09/06	3788.48	59.23	66.57	7.34	3728.15
	02/14/06	3788.48	59.44	65.03	5.59	3728.20
	02/22/06	3788.48	59.18	66.25	7.07	3728.24
	02/28/06	3788.48	59.29	66.13	6.84	3728.16
	03/14/06	3788.48	59.37	66.30	6.93	3728.07
	03/22/06	3788.48	59.63	62.92	3.29	3728.36
	03/28/06	3788.48	59.23	66.17	6.94	3728.21
	04/05/06	3788.48	59.45	66.47	7.02	3727.98
	04/12/06	3788.48	59.30	66.48	7.18	3728.10
	04/18/06	3788.48	59.18	62.36	3.18	3728.82
	04/25/06	3788.48	59.25	65.22	5.97	3728.33
	05/02/06	3788.48	59.17	65.21	6.04	3728.40
	05/09/06	3788.48	59.28	61.15	1.87	3728.92
	05/16/06	3788.48	59.31	65.32	6.01	3728.27
	05/23/06	3788.48	58.78	66.29	7.51	3728.57
	05/31/06	3788.48	58.82	62.14	3.32	3729.16
	06/06/06	3788.48	60.08	63.60	3.52	3727.87

**TABLE 1**  
**2006 GROUNDWATER ELEVATION DATA**

Plains Marketing, L.P.  
Darr Angel #1  
Lea County, New Mexico

WELL NUMBER	DATE MEASURED	TOP OF CASING ELEVATION	DEPTH TO PRODUCT	DEPTH TO WATER	PSH THICKNESS	CORRECTED GROUNDWATER ELEVATION
RW-8	06/13/06	3788.48	60.09	65.42	5.33	3727.59
	06/19/06	3788.48	58.83	66.24	7.41	3728.54
	07/18/06	3788.48	59.40	65.72	6.32	3728.13
	07/25/06	3788.48	59.94	63.91	3.97	3727.94
	08/07/06	3788.48	59.14	66.30	7.16	3728.27
	08/30/06	3788.48	59.01	66.25	7.24	3728.38
	09/13/06	3788.48	Well Obstructed			
	09/19/06	3788.48	58.94	67.71	8.77	3728.22
	09/20/06	3788.48	58.93	67.65	8.72	3728.24
	09/29/06	3788.48	59.25	68.15	8.90	3727.90
	10/03/06	3788.48	54.05	67.80	13.75	3732.37
	10/05/06	3788.48	59.17	67.75	8.58	3728.02
	10/13/06	3788.48	59.08	67.80	8.72	3728.09
	10/18/06	3788.48	59.85	65.70	5.85	3727.75
	10/24/06	3788.48	58.85	68.69	9.84	3728.15
	10/27/06	3788.48	59.60	66.71	7.11	3727.81
	10/31/06	3788.48	59.03	66.71	7.68	3728.30
	11/14/06	3788.48	59.05	66.71	7.66	3728.28
	11/17/06	3788.48	58.90	66.33	7.43	3728.47
	11/21/06	3788.48	59.19	66.71	7.52	3728.16
	11/28/06	3788.48	59.61	66.71	7.10	3727.81
	12/07/06	3788.48	59.12	66.22	7.10	3728.30
	12/12/06	3788.48	59.35	66.13	6.78	3728.11
	12/14/06	3788.48	59.56	66.66	7.10	3727.86
RW-9	01/04/06	3788.92	60.00	60.05	0.05	3728.91
	01/11/06	3788.92	59.96	60.00	0.04	3728.95
	01/17/06	3788.92	59.94	59.99	0.05	3728.97
	01/25/06	3788.92	60.03	60.06	0.03	3728.89
	01/31/06	3788.92	60.05	60.25	0.20	3728.84
	02/07/06	3788.92	60.01	60.09	0.08	3728.90
	02/14/06	3788.92	60.03	60.14	0.11	3728.87
	02/22/06	3788.92	60.08	60.16	0.08	3728.83
	02/28/06	3788.92	60.03	60.09	0.06	3728.88
	03/14/06	3788.92	60.08	60.13	0.05	3728.83
	03/22/06	3788.92	60.08	60.22	0.14	3728.82
	03/28/06	3788.92	60.05	60.10	0.05	3728.86
	04/05/06	3788.92	60.13	60.17	0.04	3728.78
	04/12/06	3788.92	60.10	60.18	0.08	3728.81
	04/18/06	3788.92	60.16	60.18	0.02	3728.76

**TABLE 1**  
**2006 GROUNDWATER ELEVATION DATA**

Plains Marketing, L.P.  
Darr Angel #1  
Lea County, New Mexico

WELL NUMBER	DATE MEASURED	TOP OF CASING ELEVATION	DEPTH TO PRODUCT	DEPTH TO WATER	PSH THICKNESS	CORRECTED GROUNDWATER ELEVATION
RW-9	04/25/06	3788.92	60.15	60.20	0.05	3728.76
	05/02/06	3788.92	60.21	60.29	0.08	3728.70
	05/09/06	3788.92	60.22	60.25	0.03	3728.70
	05/16/06	3788.92	60.25	60.29	0.04	3728.66
	05/23/06	3788.92	60.16	60.22	0.06	3728.75
	05/31/06	3788.92	60.12	60.21	0.09	3728.79
	06/06/06	3788.92	60.19	60.23	0.04	3728.72
	06/13/06	3788.92	60.22	60.31	0.09	3728.69
	06/19/06	3788.92	60.17	60.23	0.06	3728.74
	07/18/06	3788.92	60.14	60.23	0.09	3728.77
	07/25/06	3788.92	59.96	60.19	0.23	3728.93
	08/07/06	3788.92	60.27	60.35	0.08	3728.64
	08/30/06	3788.92	60.29	60.35	0.06	3728.62
	09/13/06	3788.92	59.66	63.39	3.73	3728.70
	09/19/06	3788.92	59.46	64.34	4.88	3728.73
	09/26/06	3788.92	60.38	60.40	0.02	3728.54
	09/29/06	3788.92	60.16	61.30	1.14	3728.59
	10/03/06	3788.92	59.92	62.35	2.43	3728.64
	10/13/06	3788.92	59.51	64.38	4.87	3728.68
	10/18/06	3788.92	58.48	64.98	6.50	3729.47
	10/24/06	3788.92	60.47	60.50	0.03	3728.45
	10/27/06	3788.92	60.20	60.36	0.16	3728.70
	10/31/06	3788.92	59.95	62.37	2.42	3728.61
	11/14/06	3788.92	60.20	61.40	1.20	3728.54
	11/17/06	3788.92	60.28	61.24	0.96	3728.50
	11/28/06	3788.92	59.79	63.50	3.71	3728.57
	12/07/06	3788.92	59.48	64.78	5.30	3728.65
	12/08/06	3788.92	59.77	60.91	1.14	3728.98
	12/12/06	3788.92	59.43	65.20	5.77	3728.62
	12/14/06	3788.92	58.46	67.07	8.61	3729.17
RW-10	01/04/06	3788.72	59.96	60.02	0.06	3728.75
	01/11/06	3788.72	59.93	60.01	0.08	3728.78
	01/17/06	3788.72	59.95	60.04	0.09	3728.76
	01/25/06	3788.72	58.12	62.35	4.23	3729.97
	01/31/06	3788.72	59.96	60.31	0.35	3728.71
	02/07/06	3788.72	59.95	60.21	0.26	3728.73
	02/14/06	3788.72	59.99	60.23	0.24	3728.69
	02/22/06	3788.72	60.03	60.31	0.28	3728.65
	02/28/06	3788.72	59.94	60.26	0.32	3728.73

**TABLE 1**  
**2006 GROUNDWATER ELEVATION DATA**

Plains Marketing, L.P.  
Darr Angel #1  
Lea County, New Mexico

WELL NUMBER	DATE MEASURED	TOP OF CASING ELEVATION	DEPTH TO PRODUCT	DEPTH TO WATER	PSH THICKNESS	CORRECTED GROUNDWATER ELEVATION
RW-10	03/14/06	3788.72	60.06	60.15	0.09	3728.65
	03/22/06	3788.72	60.01	60.34	0.33	3728.66
	03/28/06	3788.72	60.02	60.08	0.06	3728.69
	04/05/06	3788.72	60.10	60.14	0.04	3728.61
	04/12/06	3788.72	60.02	60.16	0.14	3728.68
	04/18/06	3788.72	60.11	60.13	0.02	3728.61
	04/25/06	3788.72	60.04	60.09	0.05	3728.67
	05/02/06	3788.72	60.10	60.17	0.07	3728.61
	05/09/06	3788.72	60.11	60.15	0.04	3728.60
	05/16/06	3788.72	60.12	60.18	0.06	3728.59
	05/23/06	3788.72	60.06	60.16	0.10	3728.65
	05/31/06	3788.72	60.09	60.15	0.06	3728.62
	06/06/06	3788.72	60.12	60.17	0.05	3728.59
	06/13/06	3788.72	60.15	60.21	0.06	3728.56
	06/19/06	3788.72	60.11	60.24	0.13	3728.59
	07/18/06	3788.72	60.23	60.29	0.06	3728.48
	07/25/06	3788.72	60.08	60.16	0.08	3728.63
	08/07/06	3788.72	60.18	60.21	0.03	3728.54
	08/30/06	3788.72	60.23	60.24	0.01	3728.49
	09/13/06	3788.72	59.02	65.91	6.89	3728.67
	09/19/06	3788.72	58.96	66.32	7.36	3728.66
	09/20/06	3788.72	58.92	66.34	7.42	3728.69
	09/26/06	3788.72	60.31	60.41	0.10	3728.40
	09/29/06	3788.72	60.28	60.30	0.02	3728.44
	10/04/06	3788.72	60.28	60.35	0.07	3728.43
	10/05/06	3788.72	60.25	60.45	0.20	3728.44
	10/13/06	3788.72	60.27	60.33	0.06	3728.44
	10/18/06	3788.72	59.56	64.15	4.59	3728.47
	10/24/06	3788.72	60.41	60.49	0.08	3728.30
	10/27/06	3788.72	59.80	63.05	3.25	3728.43
	10/31/06	3788.72	59.32	64.81	5.49	3728.58
	11/14/06	3788.72	60.30	63.05	2.75	3728.01
	11/17/06	3788.72	60.39	60.43	0.04	3728.32
	11/21/06	3788.72	60.31	60.42	0.11	3728.39
	11/28/06	3788.72	60.34	60.78	0.44	3728.31
	12/07/06	3788.72	59.34	65.05	5.71	3728.52
	12/08/06	3788.72	60.62	60.89	0.27	3728.06
	12/12/06	3788.72	59.47	64.37	4.90	3728.52
	12/14/06	3788.72	59.79	63.05	3.26	3728.44



**TABLE 1**  
**2006 GROUNDWATER ELEVATION DATA**

Plains Marketing, L.P.  
Darr Angel #1  
Lea County, New Mexico

WELL NUMBER	DATE MEASURED	TOP OF CASING ELEVATION	DEPTH TO PRODUCT	DEPTH TO WATER	PSH THICKNESS	CORRECTED GROUNDWATER ELEVATION
RW-11	01/04/06	3788.43	59.80	59.89	0.09	3728.62
	01/11/06	3788.43	59.80	59.89	0.09	3728.62
	01/17/06	3788.43	59.84	59.94	0.10	3728.58
	01/25/06	3788.43	59.55	62.86	3.31	3728.38
	01/31/06	3788.43	59.79	60.24	0.45	3728.57
	02/07/06	3788.43	59.80	60.22	0.42	3728.57
	02/14/06	3788.43	59.83	60.17	0.34	3728.55
	02/22/06	3788.43	59.73	60.18	0.45	3728.63
	02/28/06	3788.43	58.97	64.09	5.12	3728.69
	03/14/06	3788.43	59.91	60.06	0.15	3728.50
	03/22/06	3788.43	59.86	60.32	0.46	3728.50
	03/28/06	3788.43	59.88	60.00	0.12	3728.53
	04/05/06	3788.43	59.96	60.03	0.07	3728.46
	04/12/06	3788.43	59.87	60.08	0.21	3728.53
	04/18/06	3788.43	59.56	60.05	0.49	3728.80
	04/25/06	3788.43	59.90	60.02	0.12	3728.51
	05/02/06	3788.43	59.92	59.99	0.07	3728.50
	05/09/06	3788.43	59.91	59.97	0.06	3728.51
	05/16/06	3788.43	59.94	59.98	0.04	3728.48
	05/23/06	3788.43	59.90	60.09	0.19	3728.50
	05/31/06	3788.43	59.96	60.13	0.17	3728.44
	06/06/06	3788.43	60.00	60.21	0.21	3728.40
	06/13/06	3788.43	60.03	60.15	0.12	3728.38
	06/19/06	3788.43	59.98	60.12	0.14	3728.43
	07/18/06	3788.43	60.05	60.18	0.13	3728.36
	07/25/06	3788.43	60.03	60.24	0.21	3728.37
	08/07/06	3788.43	60.04	60.17	0.13	3728.37
	08/30/06	3788.43	60.06	60.24	0.18	3728.34
	09/13/06	3788.43	58.78	66.23	7.45	3728.53
	09/19/06	3788.43	58.73	66.56	7.83	3728.53
	09/20/06	3788.43	58.74	66.61	7.87	3728.51
	09/26/06	3788.43	60.15	60.36	0.21	3728.25
	09/29/06	3788.43	60.14	60.34	0.20	3728.26
	10/03/06	3788.43	60.11	60.35	0.24	3728.28
	10/05/06	3788.43	60.09	60.35	0.26	3728.30
	10/13/06	3788.43	60.10	60.49	0.39	3728.27
	10/18/06	3788.43	60.23	60.35	0.12	3728.18
	10/24/06	3788.43	60.22	60.63	0.41	3728.15
	10/27/06	3788.43	59.42	64.03	4.61	3728.32
	10/31/06	3788.43	58.98	65.75	6.77	3728.43

**TABLE 1**  
**2006 GROUNDWATER ELEVATION DATA**

Plains Marketing, L.P.  
Darr Angel #1  
Lea County, New Mexico

WELL NUMBER	DATE MEASURED	TOP OF CASING ELEVATION	DEPTH TO PRODUCT	DEPTH TO WATER	PSH THICKNESS	CORRECTED GROUNDWATER ELEVATION
RW-11	11/14/06	3788.43	60.12	60.50	0.38	3728.25
	11/17/06	3788.43	60.25	60.36	0.11	3728.16
	11/21/06	3788.43	60.16	60.31	0.15	3728.25
	11/28/06	3788.43	60.25	60.36	0.11	3728.16
	12/07/06	3788.43	59.06	65.70	6.64	3728.37
	12/08/06	3788.43	60.32	60.75	0.43	3728.05
	12/12/06	3788.43	59.21	65.20	5.99	3728.32
	12/14/06	3788.43	59.51	63.73	4.22	3728.29

*Elevations based on the North American Vertical Datum of 1929*

\* denotes change in Top of Casing Elevation due to site resurvey.

TABLE 2

## 2006 CONCENTRATIONS OF BTEX IN GROUNDWATER

PLAINS MARKETING, L.P.  
DARR ANGEL #1  
LEA COUNTY, NEW MEXICO

*All concentrations are reported in mg/L*

		METHODS: SW 846-8260b				
SAMPLE	SAMPLE			ETHYL-	m, p -	o -
LOCATION	DATE	BENZENE	TOLUENE	BENZENE	XYLENES	XYLENE
NMOCD Regulatory Limit		0.01	0.75	0.75	0.62	
MW-1	03/22/06	Not Sampled Due to PSH in Well				
	06/19/06	Not Sampled Due to PSH in Well				
	09/19/06	Not Sampled Due to PSH in Well				
	12/07/06	Not Sampled Due to PSH in Well				
MW-2	03/22/06	Not Sampled Due to PSH in Well				
	06/19/06	Not Sampled Due to PSH in Well				
	09/19/06	Not Sampled Due to PSH in Well				
	12/07/06	Not Sampled Due to PSH in Well				
MW-3	03/22/06	Not Sampled Due to PSH in Well				
	06/19/06	Not Sampled Due to PSH in Well				
	09/19/06	Not Sampled Due to PSH in Well				
	12/07/06	Not Sampled Due to PSH in Well				
MW-4	03/22/06	Not Sampled on Current Sample Schedule				
	06/19/06	Not Sampled on Current Sample Schedule				
	09/19/06	Not Sampled on Current Sample Schedule				
	12/07/06	0.0018	<0.001	<0.001	<0.001	
MW-5	03/22/06	Not Sampled Due to PSH in Well				
	06/19/06	Not Sampled Due to PSH in Well				
	09/19/06	Not Sampled Due to PSH in Well				
	12/07/06	Not Sampled Due to PSH in Well				
MW-6	03/22/06	Not Sampled Due to PSH in Well				
	06/19/06	Not Sampled Due to PSH in Well				
	09/19/06	Not Sampled Due to PSH in Well				
	12/07/06	Not Sampled Due to PSH in Well				
MW-7	03/22/06	Not Sampled on Current Sample Schedule				
	06/19/06	<0.001	<0.001	<0.001	<0.001	
	09/19/06	Not Sampled on Current Sample Schedule				
	12/07/06	<0.001	<0.001	<0.001	<0.001	
MW-8	03/22/06	Not Sampled Due to PSH in Well				
	06/19/06	Not Sampled Due to PSH in Well				
	09/19/06	Not Sampled Due to PSH in Well				
	12/07/06	Not Sampled Due to PSH in Well				

TABLE 2

## 2006 CONCENTRATIONS OF BTEX IN GROUNDWATER

PLAINS MARKETING, L.P.  
DARR ANGEL #1  
LEA COUNTY, NEW MEXICO

*All concentrations are reported in mg/L*

		METHODS: SW 846-8260b					
SAMPLE	SAMPLE			ETHYL-	m, p -	o -	
LOCATION	DATE	BENZENE	TOLUENE	BENZENE	XYLENES	XYLENE	
NMOCD Regulatory Limit		0.01	0.75	0.75	0.62		
MW-9	03/22/06	Not Sampled Due to PSH in Well					
	06/19/06	Not Sampled Due to PSH in Well					
	09/19/06	Not Sampled Due to PSH in Well					
	12/07/06	Not Sampled Due to PSH in Well					
MW-10	03/22/06	Not Sampled Due to PSH in Well					
	06/19/06	Not Sampled Due to PSH in Well					
	09/19/06	Not Sampled Due to PSH in Well					
	12/07/06	Not Sampled Due to PSH in Well					
MW-11	03/22/06	Not Sampled on Current Sample Schedule					
	06/19/06	Not Sampled on Current Sample Schedule					
	09/19/06	Not Sampled on Current Sample Schedule					
	12/07/06	<0.001	<0.001	<0.001	<0.001		
MW-12	03/22/06	1.090	<0.02	<0.02	<0.02		
	06/19/06	0.640	<0.2	<0.2	<0.2		
	09/19/06	1.020	<0.02	<0.02	<0.02		
	12/07/06	1.130	<0.02	<0.02	<0.02		
MW-13	03/22/06	Not Sampled Due to PSH in Well					
	06/19/06	Not Sampled Due to PSH in Well					
	09/19/06	Not Sampled Due to PSH in Well					
	12/07/06	Not Sampled Due to PSH in Well					
MW-14	03/22/06	Not Sampled Due to PSH in Well					
	06/19/06	Not Sampled Due to PSH in Well					
	09/19/06	Not Sampled Due to PSH in Well					
	12/07/06	Not Sampled Due to PSH in Well					
MW-15	03/22/06	Not Sampled on Current Sample Schedule					
	06/19/06	Not Sampled on Current Sample Schedule					
	09/19/06	Not Sampled on Current Sample Schedule					
	12/07/06	<0.001	<0.001	<0.001	<0.001		
MW-16	03/22/06	Not Sampled on Current Sample Schedule					
	06/19/06	Not Sampled on Current Sample Schedule					
	09/19/06	Not Sampled on Current Sample Schedule					

TABLE 2

## 2006 CONCENTRATIONS OF BTEX IN GROUNDWATER

PLAINS MARKETING, L.P.  
DARR ANGEL #1  
LEA COUNTY, NEW MEXICO

*All concentrations are reported in mg/L*

METHODS: SW 846-8260b						
SAMPLE	SAMPLE			ETHYL-	m, p -	o -
LOCATION	DATE	BENZENE	TOLUENE	BENZENE	XYLENES	XYLENE
NMOCD Regulatory Limit		0.01	0.75	0.75	0.62	
MW-16	12/07/06	<0.001	<0.001	<0.001	<0.001	
MW-17	03/22/06	<0.001	<0.001	<0.001	0.001	
	06/19/06	<0.001	<0.001	<0.001	<0.001	
	09/19/06	<0.001	<0.001	<0.001	<0.001	
	12/07/06	<0.001	<0.001	<0.001	<0.001	
MW-18	03/22/06	Not Sampled on Current Sample Schedule				
	06/19/06	Not Sampled on Current Sample Schedule				
	09/19/06	Not Sampled on Current Sample Schedule				
	12/07/06	<0.001	<0.001	<0.001	<0.001	
MW-19	03/22/06	Not Sampled on Current Sample Schedule				
	06/19/06	<0.001	<0.001	<0.001	<0.001	
	09/19/06	<0.001	<0.001	<0.001	<0.001	
	12/07/06	<0.001	<0.001	<0.001	<0.001	
MW-20	03/22/06	Not Sampled on Current Sample Schedule				
	06/19/06	Not Sampled on Current Sample Schedule				
	09/19/06	Not Sampled on Current Sample Schedule				
	12/07/06	<0.001	<0.001	<0.001	<0.001	
MW-21	03/22/06	0.0163	<0.001	0.0014	0.00380	
	06/19/06	0.0153	<0.001	0.0012	0.00200	
	09/19/06	0.0031	<0.001	<0.001	<0.001	
	12/07/06	0.0066	<0.001	<0.001	<0.001	
RW-1	03/22/06	Not Sampled Due to PSH in Well				
	06/19/06	Not Sampled Due to PSH in Well				
	09/19/06	Not Sampled Due to PSH in Well				
	12/07/06	Not Sampled Due to PSH in Well				
RW-2	03/22/06	Not Sampled Due to PSH in Well				
	06/19/06	Not Sampled Due to PSH in Well				
	09/19/06	Not Sampled Due to PSH in Well				
	12/07/06	Not Sampled Due to PSH in Well				
RW-3	03/22/06	Not Sampled Due to PSH in Well				
	06/19/06	Not Sampled Due to PSH in Well				

TABLE 2

## 2006 CONCENTRATIONS OF BTEX IN GROUNDWATER

PLAINS MARKETING, L.P.  
DARR ANGEL #1  
LEA COUNTY, NEW MEXICO

*All concentrations are reported in mg/L*

		METHODS: SW 846-8260b				
SAMPLE	SAMPLE			ETHYL-	m, p -	o -
LOCATION	DATE	BENZENE	TOLUENE	BENZENE	XYLENES	XYLENE
NMOCD Regulatory Limit		0.01	0.75	0.75	0.62	
RW-3	09/19/06	Not Sampled Due to PSH in Well				
	12/07/06	Not Sampled Due to PSH in Well				
RW-4	03/22/06	Not Sampled Due to PSH in Well				
	06/19/06	Not Sampled Due to PSH in Well				
	09/19/06	Not Sampled Due to PSH in Well				
	12/07/06	Not Sampled Due to PSH in Well				
RW-5	03/22/06	Not Sampled Due to PSH in Well				
	06/19/06	Not Sampled Due to PSH in Well				
	09/19/06	Not Sampled Due to PSH in Well				
	12/07/06	Not Sampled Due to PSH in Well				
RW-6	03/22/06	Not Sampled Due to PSH in Well				
	06/19/06	Not Sampled Due to PSH in Well				
	09/19/06	Not Sampled Due to PSH in Well				
	12/07/06	Not Sampled Due to PSH in Well				
RW-7	03/22/06	Not Sampled Due to PSH in Well				
	06/19/06	Not Sampled Due to PSH in Well				
	09/19/06	Not Sampled Due to PSH in Well				
	12/07/06	Not Sampled Due to PSH in Well				
RW-8	03/22/06	Not Sampled Due to PSH in Well				
	06/19/06	Not Sampled Due to PSH in Well				
	09/19/06	Not Sampled Due to PSH in Well				
	12/07/06	Not Sampled Due to PSH in Well				
RW-9	03/22/06	Not Sampled Due to PSH in Well				
	06/19/06	Not Sampled Due to PSH in Well				
	09/19/06	Not Sampled Due to PSH in Well				
	12/07/06	Not Sampled Due to PSH in Well				
RW-10	03/22/06	Not Sampled Due to PSH in Well				
	06/19/06	Not Sampled Due to PSH in Well				
	09/19/06	Not Sampled Due to PSH in Well				
	12/07/06	Not Sampled Due to PSH in Well				
RW-11	03/22/06	Not Sampled Due to PSH in Well				



TABLE 2

## 2006 CONCENTRATIONS OF BTEX IN GROUNDWATER

PLAINS MARKETING, L.P.  
DARR ANGEL #1  
LEA COUNTY, NEW MEXICO

*All concentrations are reported in mg/L*

		METHODS: SW 846-8260b				
SAMPLE	SAMPLE			ETHYL-	m, p -	o -
LOCATION	DATE	BENZENE	TOLUENE	BENZENE	XYLENES	XYLENE
NMOCD Regulatory Limit		0.01	0.75	0.75	0.62	
RW-11	06/19/06	Not Sampled Due to PSH in Well				
	09/19/06	Not Sampled Due to PSH in Well				
	12/07/06	Not Sampled Due to PSH in Well				

## APPENDICES

**APPENDIX A:**  
**Release Notification and Corrective Action**  
**(Form C-141)**

DISTRICT I  
P.O. Box 1980, Hobbs, NM 88241-1980

DISTRICT II  
P.O. Drawer DD, Artesia, NM 88211-0719

DISTRICT III  
1000 Rio Brazos Rd, Aztec, NM 87410

State of New Mexico  
Energy, Minerals and Natural Resources Department

OIL CONSERVATION DIVISION

P.O. Box 2088  
Santa Fe, New Mexico 87504-2088

SUBMIT 2 COPIES TO  
APPROPRIATE DISTRICT  
OFFICE IN ACCORDANCE  
WITH RULE 116 PRINTED  
ON BACK SIDE OF FORM

NOTIFICATION OF FIRE, BREAKS, SPILLS, LEAKS, AND BLOWOUTS

OPERATOR <i>EOTT Energy Pipeline</i>					ADDRESS <i>PO Box 1660 Midland</i>		TELEPHONE # <i>915/6872640</i>	
REPORT OF	FIRE	BREAK	SPILL	LEAK	BLOWOUT	OTHER*		
TYPE OF FACILITY	DRUG WELL	PROD WELL	TANK BTRY	PIPE LINE	GASO PLNT	OIL RFY	OTHER*	
FACILITY NAME:								
LOCATION OF FACILITY					SEC. <i>11</i>	TWP. <i>15S</i>	RGE. <i>37E</i>	COUNTY <i>Lea</i>
Qtr/Qtr Sec. or Footage								
DISTANCE AND DIRECTION FROM NEAREST TOWN OR PROMINENT LANDMARK <i>22 miles E of Lovington off of Plains Hwy</i>								
DATE AND HOUR OF OCCURRENCE <i>5/1/97 2:00 PM</i>					DATE AND HOUR OF DISCOVERY <i>Same</i>			
WAS IMMEDIATE NOTICE GIVEN?		YES <input checked="" type="checkbox"/>	NO	NOT REQUIRED	IF YES, TO WHOM <i>Karen</i>			
BY WHOM <i>Lennah Frost</i>					DATE AND HOUR <i>5-2-97 10 AM</i>			
TYPE OF FLUID LOST <i>Crude Oil</i>					QUANTITY OF LOSS <i>25 bbls</i>		VOLUME RECOVERED <i>15 bbls</i>	
DID ANY FLUIDS REACH A WATERCOURSE?		YES	NO <input checked="" type="checkbox"/>	QUANTITY				
IF YES, DESCRIBE FULLY**								
DESCRIBE CAUSE OF PROBLEM AND REMEDIAL ACTION TAKEN**								
<i>Internal Corrosion - Clamped &amp; will replace pipe</i>								
DESCRIBE AREA AFFECTED AND CLEANUP ACTION TAKEN**								
<i>Area is rocky. Will be excavated &amp; disposed of at Goo Yea Landfarm</i>								
DESCRIPTION OF AREA		FARMING	GRAZING	URBAN	OTHER*			
SURFACE CONDITIONS		SANDY	SANDY LOAM	CLAY	ROCKY	WET	DRY	SNOW
DESCRIBE GENERAL CONDITIONS PREVAILING (TEMPERATURE, PRECIPITATION, ETC.)**								
<i>Clear</i>								
I HEREBY CERTIFY THAT THE INFORMATION ABOVE IS TRUE AND COMPLETE TO THE BEST OF MY KNOWLEDGE AND BELIEF								
SIGNED <i>Lennah Frost</i>		PRINTED NAME <i>Lennah Frost</i>			AND TITLE <i>ENV Eng</i>		DATE <i>5-5-97</i>	

\*SPECIFY

\*\*ATTACH ADDITIONAL SHEETS IF NECESSARY