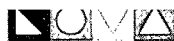


AP - 17

ANNUAL MONITORING REPORT

YEAR(S):
2006



* AP-17
Report
2006

**2006
ANNUAL MONITORING REPORT**

TNM 97-17

NE 1/4 SW 1/4 SECTION 21, TOWNSHIP 20 SOUTH RANGE 37 EAST
LEA COUNTY, NEW MEXICO
PLAINS MARKETING EMS NUMBER: TNM 97-17
NMOCD REFERENCE AP-017

PREPARED FOR:

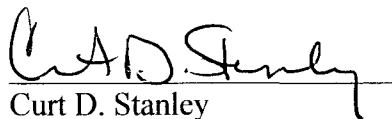
PLAINS MARKETING, L.P.
333 CLAY STREET SUITE 1600
HOUSTON, TEXAS 77022



PREPARED BY:

NOVA Safety and Environmental
2057 Commerce Street
Midland, Texas 79703

March 2007


Curt D. Stanley
Project Manager

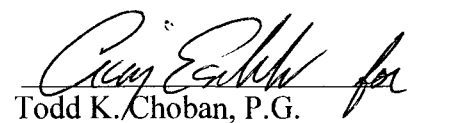

Todd K. Choban, P.G.
Vice-President Technical Services

TABLE OF CONTENTS

INTRODUCTION.....	1
SITE DESCRIPTION AND BACKGROUND INFORMATION.....	1
FIELD ACTIVITIES.....	1
LABORATORY RESULTS.....	2
SUMMARY	8
ANTICIPATED ACTIONS.....	9
LIMITATIONS.....	9
DISTRIBUTION	11

FIGURES

Figure 1 – Site Location Map

Figure 2A Inferred Groundwater Gradient Map – March 15, 2006

2B Inferred Groundwater Gradient Map – June 15, 2006

2C Inferred Groundwater Gradient Map – September 30, 2006

2D Inferred Groundwater Gradient Map – November 30, 2006

Figure 3A Groundwater Concentration and Inferred PSH Extent Map – March 15, 2006

3B Groundwater Concentration and Inferred PSH Extent Map – June 15, 2006

3C Groundwater Concentration and Inferred PSH Extent Map – September 30, 2006

3D Groundwater Concentration and Inferred PSH Extent Map – December 1, 2006

TABLES

Table 1 – 2006 Groundwater Elevation Data

Table 2 – 2006 Concentrations of BTEX in Groundwater

APPENDICES

Appendix A – Release Notification and Corrective Action (Form C-141)

ENCLOSED ON CD

2006 Tables 1 and 2 - Groundwater Elevation and BTEX Concentration Data

2006 Figures 1, 2A-2D, and 3A-3D

Electronic Copies of Laboratory Reports

Historic Groundwater Elevation Data

Historic BTEX Concentration Data

INTRODUCTION

On behalf of Plains Marketing, L.P., (Plains), NOVA Safety and Environmental (NOVA) is pleased to submit this Annual Monitoring Report in compliance with the New Mexico Oil Conservation Division (NMOCD) letter of May 1998, requiring submittal of an Annual Monitoring Report by April 1 of each year. Beginning on May 29, 2004, project management responsibilities were assumed by NOVA, having previously been managed by Environmental Technology Group, Inc. (ETGI). The TNM 97-17 pipeline release site, formally the responsibility of Enron Oil Trading and Transportation (EOTT) is the responsibility of Plains. The Release Notification and Corrective Action (Form C-141) is provided as Appendix A. This report is intended to be viewed as a complete document with figures, attachments, tables and text. The report presents the results of the quarterly groundwater monitoring events conducted in calendar year 2006 only. For reference, the Site Location Map is provided as Figure 1. Cumulative tables and laboratory data are provided on the enclosed data disk.

Groundwater monitoring was conducted during each quarter of 2006 to assess the levels and extent of dissolved phase constituents and Phase Separated Hydrocarbons (PSH). The groundwater monitoring events consisted of measuring static water levels in the monitor wells, checking for the presence of PSH, and purging and sampling of each well exhibiting sufficient recharge. Monitor wells containing a thickness of PSH greater than 0.01 foot were not sampled.

SITE DESCRIPTION AND BACKGROUND INFORMATION

The legal description of the site is NE 1/4 SW 1/4 Section 21, Township 20 South, Range 37 East, Lea County, New Mexico. The TNM 97-17 release was discovered by Texas New Mexico Pipe Line Company (TNM) and reported on August 19, 1997. An estimated 170 barrels of crude oil were released and 160 were recovered. The release occurred from a 16-inch pipeline and was attributed to structural failure associated with internal pipeline corrosion. The Release Notification and Corrective Action (Form C-141) is provided as Appendix A. Following completion of repairs to the pipeline, approximately 1,160 cubic yards of impacted soil was excavated and stockpiled on-site pending treatment. The groundwater at this site ranges from approximately 15 to 21 feet below ground surface (bgs).

Twenty-eight (28) groundwater monitor wells (MW-1 through MW-28) and six (6) PSH recovery wells (RW-1 through RW-6) are currently on-site. A pneumatic product recovery system operated on-site, incorporating recovery well RW-6 and monitor wells MW-8, MW-14 and MW-15. The automated recovery system has operated generally throughout the reporting period.

FIELD ACTIVITIES

A measurable thickness of PSH was recorded on fourteen (14) monitor wells and recovery wells during the reporting period. The average thickness of PSH in monitor wells and recovery wells exhibiting PSH was 0.41 feet. The maximum thickness of PSH in monitor wells and recovery wells during the 2006 reporting period was 3.42 feet in recovery well RW-1 on March 16, 2006. PSH data for the 2006 gauging events can be found in Table 1. Approximately 301 gallons (7.16

barrels) of PSH were recovered from the site during the reporting period. Approximately 1,537 gallons (36.6 barrels) of PSH has been recovered since project inception.

Quarterly monitoring events for the reporting period were performed according to the following sampling schedule, which was approved by the NMOCD in correspondence dated April 28, 2004 and amended by NMOCD by correspondence dated June 22, 2005.

NMOCD APPROVED SAMPLING SCHEDULE					
Location	Schedule	Location	Schedule	Location	Schedule
MW-1	Annually	MW-13	Annually	MW-25	Semi-Annually
MW-2	Annually	MW-14	Quarterly	MW-26	Quarterly
MW-3	Annually	MW-15	Quarterly	MW-27	Semi-Annually
MW-4	Quarterly	MW-16	Annually	MW-28	Annually
MW-5	Quarterly	MW-17	Annually	RW-1	Quarterly
MW-6	Quarterly	MW-18	Annually	RW-2	Quarterly
MW-7	Quarterly	MW-19	Quarterly	RW-3	Quarterly
MW-8	Quarterly	MW-20	Quarterly	RW-4	Quarterly
MW-9	Quarterly	MW-21	Quarterly	RW-5	Quarterly
MW-10	Quarterly	MW-22	Semi-Annually	RW-6	Quarterly
MW-11	Annually	MW-23	Semi-Annually		
MW-12	Annually	MW-24	Annually		

The site monitor wells were gauged and sampled on March 16, June 15, September 18, and November 30 (gauged) and December 1, 2006 (sampled). During each sampling event the monitor wells were purged of approximately three well volumes of water or until the wells were dry using a PVC bailer or electrical Grundfos pump. Groundwater was allowed to recharge and samples were obtained using disposable Teflon samplers. Water samples were collected in clean glass containers provided by the laboratory and placed on ice in the field. Purge water was collected in a polystyrene tank and disposed of by Key Energy utilizing a licensed disposal facility (NMOCD AO SWD-730).

Locations of the monitor wells and the inferred groundwater gradient, which were constructed from measurements collected during the four (4) quarterly monitoring events, are depicted on Figures 2A through 2D, the Inferred Groundwater Gradient Maps. Groundwater elevation data for 2006 is provided as Table 1. Historic groundwater elevation data beginning at project inception is provided on the enclosed data disk.

The most recent Groundwater Gradient Map, Figure 2D, indicates a general gradient of approximately 0.003 feet/foot to the southeast as measured between monitor well MW-4 and recovery well RW-1. This is consistent with data presented on Figures 2A through 2C from earlier in the year. The corrected groundwater elevations ranged between 3,487.70 to 3,492.41 feet above mean sea level, in monitor well MW-1 on September 6, 2006 and in recovery well RW-6 on December 18, 2006, respectively.

LABORATORY RESULTS

Monitor wells MW-4, MW-6 through MW-8, MW-14, MW-15 and MW-19 and recovery wells RW-1, RW-2, RW-5 and RW-6 contained measurable PSH throughout the 2006 reporting period

and were not sampled. Recovery wells RW-3 and RW-4 contained measurable PSH during the 2nd, 3rd and 4th quarters of 2006 and were not sampled during those quarters. Monitor well MW-10 contained PSH during the 2nd quarter of the reporting period and was not sampled during the 2nd quarter.

Groundwater samples collected during the 2006 monitoring events were delivered to Trace Analysis, Inc., of Lubbock, Texas for determination of Benzene, Toluene, Ethylbenzene and Xylene (BTEX) constituent concentrations by EPA Method SW846-8021b. A listing of BTEX constituent concentrations is summarized in Table 2. Copies of the laboratory reports for 2006 are provided on the enclosed data disk. The quarterly groundwater sample results for benzene and BTEX constituent concentrations are depicted on Figures 3A-3D.

Monitor well MW-1 is sampled on an annual schedule and analytical results indicate BTEX constituent concentrations were below laboratory method detection limits (MDL) and NMOCD regulatory standards of 0.01 mg/L for benzene, 0.75 mg/L for toluene, 0.75 mg/L for ethylbenzene and 0.62 for xylene during the 4th quarter sampling event.

Monitor well MW-2 is sampled on an annual schedule and analytical results indicate toluene, ethylbenzene and xylene constituent concentrations were below laboratory method detection limits (MDL) and NMOCD regulatory standards during the 4th quarter sampling event. Due to the presence of a surfactant (origin unknown) in the groundwater sample, the analytical MDL (0.02 mg/L) for benzene was above the NMOCD regulatory standard (0.01 mg/L) during the 4th quarter sampling event.

Monitor well MW-3 is sampled on an annual schedule and analytical results indicate toluene and ethylbenzene constituent concentrations were below MDL and NMOCD regulatory standards, during the 4th quarter sampling event. The xylene constituent concentration was 0.0466 mg/L during the 4th quarter sampling event. Xylene concentrations were below the NMOCD regulatory standard for the reporting period. Due to the presence of a surfactant (origin unknown) in the groundwater sample, the analytical MDL (0.02 mg/L) for benzene was above the NMOCD regulatory standard (0.01 mg/L) during the 4th quarter sampling event.

Monitor well MW-4 is monitored on a quarterly schedule. Monitor well MW-4 was not sampled during any of four (4) quarters of the reporting period, due to the reported presence of PSH in the monitor well. PSH thicknesses of 0.40 feet, 0.65 feet, 0.07 feet and 0.10 feet were reported during the 1st, 2nd, 3rd and 4th quarters of 2006, respectively.

Monitor well MW-5 is sampled on a quarterly schedule and analytical results indicate benzene concentrations ranged from <0.001 mg/L during the 3rd quarter to 0.3580 mg/L during the 4th quarter of 2006. Benzene concentrations were above the NMOCD regulatory standard during the 1st and 4th quarters of the reporting period. Fourth quarter 2006 benzene concentration results appear to be skewed by the presence of a surfactant in the groundwater, based on prior and subsequent analytical results. Analytical results indicate 3rd quarter 2006 benzene concentrations were <0.001 mg/L and 1st quarter 2007 benzene concentrations were <0.02 mg/L (elevated laboratory MDL due to surfactant and dilution). Toluene concentrations were below MDL and NMOCD regulatory standards during all four (4) quarters of 2006. Ethylbenzene concentrations

ranged from <0.005 mg/L during the 2nd quarter to 0.13 mg/L during the 4th quarters of 2006. Ethylbenzene concentrations were below the NMOCD regulatory standard during all four (4) quarters of the reporting period. Xylene concentrations ranged from <0.005 mg/L during the 1st and 2nd quarter to 0.0097 mg/L during the 3rd quarter of 2006. Xylene concentrations were below the NMOCD regulatory standard during all four (4) quarters of the reporting period.

Monitor well MW-6 is monitored on a quarterly schedule. Monitor well MW-6 was not sampled during any of four (4) quarters of the reporting period, due to the reported presence of PSH in the monitor well. PSH thicknesses of 0.74 feet, 0.50 feet, 0.06 feet and 0.12 feet were reported during the 1st, 2nd, 3rd and 4th quarters of 2006, respectively.

Monitor well MW-7 is monitored on a quarterly schedule. Monitor well MW-7 was not sampled during any of four (4) quarters of the reporting period, due to the reported presence of PSH in the monitor well. PSH thicknesses of 0.26 feet, 0.63 feet, 0.26 feet and 0.39 feet were reported during the 1st, 2nd, 3rd and 4th quarters of 2006, respectively.

Monitor well MW-8 is monitored on a quarterly schedule. Monitor well MW-8 was not sampled during any of four (4) quarters of the reporting period, due to the reported presence of PSH in the monitor well. PSH thicknesses of 0.36 feet, 0.26 feet and 0.39 feet were reported during the 1st, 3rd and 4th quarters of 2006, respectively. The monitor well was obstructed during the 2nd quarter monitoring event.

Monitor well MW-9 is sampled on a quarterly schedule and analytical results indicate benzene concentrations ranged from <0.001 mg/L during the 3rd quarter to 0.0709 mg/L during the 1st quarter of 2006. Benzene concentrations were above the NMOCD regulatory standard during the 1st and 2nd quarters of the reporting period. Toluene concentrations were below MDL and NMOCD regulatory standards during all four (4) quarters of 2006. Ethylbenzene concentrations ranged from <0.001 mg/L during the 3rd quarter to 0.023 mg/L during the 1st quarter of 2006. Ethylbenzene concentrations were below the NMOCD regulatory standard during all four (4) quarters of the reporting period. Xylene concentrations ranged from <0.005 mg/L during the 1st and 2nd quarter to 0.0097 mg/L during the 3rd quarter of 2006. Xylene concentrations were below NMOCD regulatory standards during all four (4) quarters of 2006.

Monitor well MW-10 is sampled / monitored on a quarterly schedule. MW-10 was not sampled during the 2nd quarter of 2006, due to the reported presence of PSH (0.09 feet) in the monitor well. Analytical results indicate benzene concentrations ranged from <0.001 mg/L during the 3rd quarter to 0.056 mg/L during the 1st quarter of 2006. Benzene concentrations were above the NMOCD regulatory standard during the 1st and 4th quarters of the reporting period. Toluene concentrations were below MDL and NMOCD regulatory standards during the three (3) sampled quarters of 2006. Ethylbenzene concentrations ranged from 0.0379 mg/L during the 3rd quarter to 0.0834 mg/L during the 4th quarter of 2006. Ethylbenzene concentrations were below the NMOCD regulatory standard during all four (4) quarters of the reporting period. Xylene concentrations ranged from <0.01 mg/L during the 1st and 4th quarters to 0.0035 mg/L during the 3rd quarter of 2006. Xylene concentrations were below NMOCD regulatory standards during all four (4) quarters of 2006.

Monitor well MW-11 is sampled on an annual schedule and analytical results indicate BTEX constituent concentrations were below MDL and NMOCD regulatory standards during the 4th quarter sampling event.

Monitor well MW-12 is sampled on an annual schedule and analytical results indicate benzene, toluene and ethylbenzene constituent concentrations were below MDL and NMOCD regulatory standards during the 4th quarter sampling event. Xylene concentrations were 0.0336 mg/L during the 4th quarter sampling event. Xylene concentrations were below NMOCD regulatory standards.

Monitor well MW-13 is sampled on an annual schedule and analytical results indicate toluene, ethylbenzene, and xylene concentrations were below MDL and NMOCD regulatory standards, during the 4th quarter sampling event. Due to the presence of a surfactant (origin unknown) in the groundwater sample, the analytical MDL (0.02 mg/L) for benzene was above the NMOCD regulatory standard (0.01 mg/L) during the 4th quarter sampling event.

Monitor well MW-14 is monitored on a quarterly schedule. Monitor well MW-14 was not sampled during any of four (4) quarters of the reporting period, due to the reported presence of PSH in the monitor well. PSH thicknesses of 0.57 feet, 3.22 feet, 1.82 feet and 1.28 feet were reported during the 1st, 2nd, 3rd and 4th quarters of 2006, respectively.

Monitor well MW-15 is monitored on a quarterly schedule. Monitor well MW-15 was not sampled during any of four (4) quarters of the reporting period, due to the reported presence of PSH in the monitor well. PSH thicknesses of 0.36 feet, 0.44 feet, 0.43 feet and 0.35 feet were reported during the 1st, 2nd, 3rd and 4th quarters of 2006, respectively.

Monitor well MW-16 is sampled on an annual schedule and analytical results indicate toluene, ethylbenzene, and xylene concentrations were below MDL and NMOCD regulatory standards, during the 4th quarter sampling event. Due to the presence of a surfactant (origin unknown) in the groundwater sample, the analytical MDL (0.02 mg/L) for benzene was above the NMOCD regulatory standard (0.01 mg/L) during the 4th quarter sampling event.

Monitor well MW-17 is sampled on an annual schedule and analytical results indicate toluene, ethylbenzene, and xylene concentrations were below MDL and NMOCD regulatory standards, during the 4th quarter sampling event. Due to the presence of a surfactant (origin unknown) in the groundwater sample, the analytical MDL (0.02 mg/L) for benzene was above the NMOCD regulatory standard (0.01 mg/L) during the 4th quarter sampling event.

Monitor well MW-18 is sampled on an annual schedule and analytical results indicate BTEX constituent concentrations were below MDL and NMOCD regulatory standards during the 4th quarter sampling event.

Monitor well MW-19 is monitored on a quarterly schedule. Monitor well MW-19 was not sampled during any of four (4) quarters of the reporting period, due to the reported presence of PSH in the monitor well. PSH thicknesses of 0.12 feet, 0.29 feet, 0.07 feet and 0.12 feet were reported during the 1st, 2nd, 3rd and 4th quarters of 2006, respectively.

Monitor well MW-20 is sampled on a quarterly schedule and analytical results indicate benzene concentrations ranged from <0.001 mg/L during the 3rd quarter to 0.2920 mg/L during the 4th quarter of 2006. Benzene concentrations were above the NMOCD regulatory standard during the 1st, 2nd and 4th quarters of the reporting period. Toluene concentrations were below MDL and NMOCD regulatory standards during all four (4) quarters of 2006. Ethylbenzene concentrations ranged from 0.0056 mg/L during the 3rd quarter to 0.1240 mg/L during the 4th quarter of 2006. Ethylbenzene concentrations were below the NMOCD regulatory standard during all four (4) quarters of the reporting period. Xylene concentrations ranged from <0.005 mg/L during the 1st quarter to 0.0109 mg/L during the 3rd quarter of 2006. Xylene concentrations were below the NMOCD regulatory standard during all four (4) quarters of the reporting period.

Monitor well MW-21 is sampled on a quarterly schedule and analytical results indicate benzene concentrations ranged from <0.02 mg/L during the 2nd quarter to 0.3280 mg/L during the 4th quarter of 2006. Benzene concentrations were above the NMOCD regulatory standard during the 4th quarter of the reporting period. Fourth quarter 2006 benzene concentration results appear to be skewed by the presence of a surfactant in the groundwater, based on prior and subsequent analytical results. Toluene concentrations were below MDL and NMOCD regulatory standards during all three (3) sampled quarters of 2006. Ethylbenzene concentrations ranged from <0.005 mg/L during the 3rd quarter to 0.113 mg/L during the 4th quarter of 2006. Ethylbenzene concentrations were below the NMOCD regulatory standard during all three (3) sampled quarters of the reporting period. Xylene concentrations ranged from <0.01 mg/L during the 4th quarter to 0.011 mg/L during the 3rd quarter of 2006. Xylene concentrations were below the NMOCD regulatory standard during all three (3) sampled quarters of the reporting period. Monitor well MW-21 was not sampled during the 1st quarter of the reporting period due to human error.

Monitor well MW-22 is sampled on a semi-annual schedule and analytical results indicate benzene concentrations ranged from <0.001 mg/L during the 2nd quarter to 0.312 mg/L during the 4th quarter of 2006. Benzene concentrations were above the NMOCD regulatory standard during the 4th quarter of the reporting period. Fourth quarter 2006 benzene concentration results appear to be skewed by the presence of a surfactant in the groundwater, based on prior and subsequent analytical results. Toluene concentrations were below MDL and NMOCD regulatory standards during the 2nd and 4th quarters of 2006. Ethylbenzene concentrations ranged from <0.001 mg/L during the 2nd quarter to 0.0793 mg/L during the 4th quarter of 2006. Ethylbenzene concentrations were below the NMOCD regulatory standard during the 2nd and 4th quarters of the reporting period. Xylene concentrations ranged from <0.01 mg/L during the 4th quarter to 0.011 mg/L during the 4th quarter of 2006. Xylene concentrations were below the NMOCD regulatory standard during the 2nd and 4th quarters of the reporting period.

Monitor well MW-23 is sampled on a semi-annual schedule and analytical results indicate benzene concentrations ranged from <0.001 mg/L during the 2nd and 3rd quarter to 0.036 mg/L during the 4th quarter of 2006. Benzene concentrations were above the NMOCD regulatory standard during the 4th quarter of the reporting period. Fourth quarter 2006 benzene concentration results appear to be skewed by the presence of a surfactant in the groundwater, based on prior and subsequent analytical results. Toluene concentrations were below MDL and NMOCD regulatory standards during the 2nd, 3rd and 4th quarters of 2006. Ethylbenzene concentrations ranged from <0.001 mg/L during the 2nd quarter to 0.0745 mg/L during the 4th

quarter of 2006. Ethylbenzene concentrations were below the NMOCD regulatory standard during the 2nd, 3rd and 4th quarters of the reporting period. Xylene concentrations ranged from <0.001 mg/L during the 2nd quarter to 0.0118 mg/L during the 3rd quarter of 2006. Xylene concentrations were below the NMOCD regulatory standard during the 2nd, 3rd and 4th quarters of the reporting period.

Monitor well MW-24 is sampled on an annual schedule and analytical results indicate BTEX constituent concentrations were below MDL and NMOCD regulatory standards during the 4th quarter sampling event.

Monitor well MW-25 is sampled on a semi-annual schedule and analytical results indicate BTEX constituent concentrations were below MDL and NMOCD regulatory standards during the 2nd and 4th quarter sampling event.

Monitor well MW-26 is sampled on a quarterly schedule and analytical results indicate benzene concentrations ranged from <0.001 mg/L during the 3rd quarter to 0.3240 mg/L during the 4th quarter of 2006. Benzene concentrations were above the NMOCD regulatory standard during the 4th quarter of the reporting period. Fourth quarter 2006 benzene concentration results appear to be skewed by the presence of a surfactant in the groundwater, based on prior and subsequent analytical results. Toluene concentrations were below MDL and NMOCD regulatory standards during all three (3) sampled quarters of 2006. Ethylbenzene concentrations ranged from <0.0032 mg/L during the 2nd quarter to 0.1190 mg/L during the 4th quarter of 2006. Ethylbenzene concentrations were above the NMOCD regulatory standard during 4th quarter of the reporting period. Xylene concentrations ranged from <0.001 mg/L during the 4th quarter to 0.0130 mg/L during the 3rd quarter of 2006. Xylene concentrations were below the NMOCD regulatory standard during all three (3) sampled quarters of the reporting period. Monitor well MW-26 was not sampled during the 1st quarter of the reporting period.

Monitor well MW-27 is sampled on a semi-annual schedule and analytical results indicate BTEX constituent concentrations were below MDL and NMOCD regulatory standards during the 2nd and 4th quarter sampling events.

Monitor well MW-28 is sampled on an annual schedule and analytical results indicate BTEX constituent concentrations were below MDL and NMOCD regulatory standards during the 4th quarter sampling event.

Recovery well RW-1 is monitored on a quarterly schedule. Recovery well RW-1 was not sampled during any of four (4) quarters of the reporting period, due to the reported presence of PSH in the monitor well. PSH thicknesses of 3.42 feet, 0.15 feet, 0.46 feet and 0.16 feet were reported during the 1st, 2nd, 3rd and 4th quarters of 2006, respectively.

Recovery well RW-2 is monitored on a quarterly schedule. Recovery well RW-2 was not sampled during any of four (4) quarters of the reporting period, due to the reported presence of PSH in the monitor well. PSH thicknesses of 0.29 feet, 0.07 feet, 0.09 feet and 0.20 feet were reported during the 1st, 2nd, 3rd and 4th quarters of 2006, respectively.

Recovery well RW-3 is monitored / sampled on a quarterly schedule. Recovery well RW-3 was not sampled during the 2nd, 3rd or 4th quarters of the reporting period, due to the reported presence of PSH in the monitor well. PSH thicknesses of 0.08 feet, 0.05 feet and 0.02 feet were reported during the 2nd, 3rd and 4th quarters of 2006, respectively. Analytical results of samples collected during the 1st quarter of 2006 indicate benzene concentrations were 0.0910 mg/L. Benzene concentrations were above the NMOCD regulatory standard during the 1st quarter of the reporting period. Toluene concentrations were below MDL and the NMOCD regulatory standards for the 1st quarter of 2006. Ethylbenzene concentrations were 0.0383 mg/L during the 1st quarter of 2006. Ethylbenzene concentrations were below the NMOCD regulatory standards during the 1st quarter of the reporting period. Xylene concentrations were 0.0064 mg/L during the 1st quarter of 2006. Xylene concentrations were below the NMOCD regulatory standard during the 1st quarter reporting period.

Recovery well RW-4 is monitored / sampled on a quarterly schedule. Recovery well RW-4 was not sampled during the 2nd, 3rd or 4th quarters of the reporting period, due to the reported presence of PSH in the monitor well. PSH thicknesses of 0.11 feet, 0.02 feet and 0.01 feet were reported during the 2nd, 3rd and 4th quarters of 2006, respectively. Analytical results of samples collected during the 1st quarter of 2006 indicate benzene concentrations were 0.266 mg/L. Benzene concentrations were above the NMOCD regulatory standard during the 1st quarter of the reporting period. Toluene concentrations were below MDL and the NMOCD regulatory standards for the 1st quarter of 2006. Ethylbenzene concentrations were 0.0595 mg/L during the 1st quarter of 2006. Ethylbenzene concentrations were below the NMOCD regulatory standards during the 1st quarter of the reporting period. Xylene concentrations were 0.0459 mg/L during the 1st quarter of 2006. Xylene concentrations were below the NMOCD regulatory standard during the 1st quarter reporting period.

Recovery well RW-5 is monitored on a quarterly schedule. Recovery well RW-5 was not sampled during any of four (4) quarters of the reporting period, due to the reported presence of PSH in the monitor well. PSH thicknesses of 0.27 feet, 0.17 feet, 0.34 feet and 0.51 feet were reported during the 1st, 2nd, 3rd and 4th quarters of 2006, respectively.

Recovery well RW-6 is monitored on a quarterly schedule. Recovery well RW-6 was not sampled during any of four (4) quarters of the reporting period, due to the reported presence of PSH in the monitor well. PSH thicknesses of 0.22 feet, 0.37 feet, 0.53 feet and 0.45 feet were reported during the 1st, 2nd, 3rd and 4th quarters of 2006, respectively.

Laboratory analytical results were compared to NMOCD regulatory limits based on the New Mexico groundwater standards found in section 20.6.2.3103 of the New Mexico Administrative Code.

SUMMARY

This report presents the results of monitoring activities for the 2006 annual monitoring period. Currently, there are twenty eight (28) groundwater monitor wells (MW-1 through MW-28) and six (6) product recovery wells (RW-1 through RW-6) on-site. Manual product recovery of monitor and recovery well not connected to the automatic system, occurred on a weekly schedule.

Groundwater elevation contours generated from water level measurements acquired indicated a general gradient of approximately 0.003 feet/foot to the southeast.

Eleven (11) monitor and recovery wells contained measurable PSH throughout the reporting period and were not sampled. Additional, three (3) monitor wells and recovery well contained measurable PSH during one (1) quarter of the reporting period and were not sampled during that quarter.

Analytical results indicate BTEX constituent concentrations were below NMOCD regulatory standards in eight (8) monitor wells. Additional, analytical results indicate five (5) monitor wells exhibited BTEX constituent concentrations below the method detection limits (<0.02 mg/L) during the 4th quarter, but possibly above the NMOCD regulatory standard of 0.01 mg/L.

During the 3rd quarter of the reporting period, the analytical laboratory informed NOVA that a unknown surfactant was present in groundwater samples collected from the TNM 97-17 site. Due to the presence of the surfactant, the laboratory was required to dilute the samples; the dilution subsequently increased the laboratory method detection limit above the established NMOCD regulatory standard. The NMOCD was notified of the onsite surfactant impact.

Analytical results from groundwater samples collected from monitor wells MW-5, MW-21, MW-22, MW-23 and MW-26 appear to indicate a skewed benzene concentration based on prior and subsequent (1st quarter 2007) analytical results.

Approximately 300.8 gallons (7.16 barrels) of PSH were recovered from the site during the reporting period. Approximately 1,537 gallons (36.6 barrels) of PSH has been recovered since project inception.

ANTICIPATED ACTIONS

Quarterly gauging and sampling will continue in 2007. Manual product recovery and system operations will occur weekly and will be adjusted according to site conditions. The recovery system will be monitored and adjusted by adding additional or relocating existing pumps to maximize efficiency in product removal. An Annual Monitoring Report will be submitted to the NMOCD before April 1, 2008.

A *Soil Closure Strategy and Site Restoration Work Plan* was submitted to the NMOCD in August 2006. The Work Plan proposes soil remediation activities intended to progress the site toward an NMOCD approved closure. To date, Plains has not received a response from the NMOCD as to the status of this Work Plan.

LIMITATIONS

NOVA has prepared this Annual Monitoring Report to the best of its ability. No other warranty, expressed or implied, is made or intended.

NOVA has examined and relied upon documents referenced in the report and has relied on oral statements made by certain individuals. NOVA has not conducted an independent examination of the facts contained in referenced materials and statements. We have presumed the genuineness of the documents and that the information provided in documents or statements is true and accurate. NOVA has prepared this report, in a professional manner, using the degree of skill and care exercised by similar environmental consultants. NOVA also notes that the facts and conditions referenced in this report may change over time and the conclusions and recommendations set forth herein are applicable only to the facts and conditions as described at the time of this report.

This report has been prepared for the benefit of Plains. The information contained in this report, including all exhibits and attachments, may not be used by any other party without the express consent of NOVA and/or Plains.

DISTRIBUTION

- Copy 1 Ben Stone
New Mexico Energy, Minerals and Natural Resources Department
Oil Conservation Division
1220 South St. Francis Drive
Santa Fe, NM 87505
- Copy 2: Larry Johnson and Patricia Caperton
New Mexico Energy, Minerals and Natural Resources Department
Oil Conservation Division, District 1
1625 French Drive
Hobbs, NM 88240
- Copy 3: Camille Reynolds
Plains Marketing, L.P.
3112 Highway 82
Lovington, NM
cjreynolds@paalp.com
- Copy 4: Jeff Dann
Plains Marketing, L.P.
333 Clay Street
Suite 1600
Houston, TX 77002
jpdann@paalp.com
- Copy 5: NOVA Safety and Environmental
2057 Commerce Street
Midland, TX 79703
cstanley@novatraining.cc

FIGURES

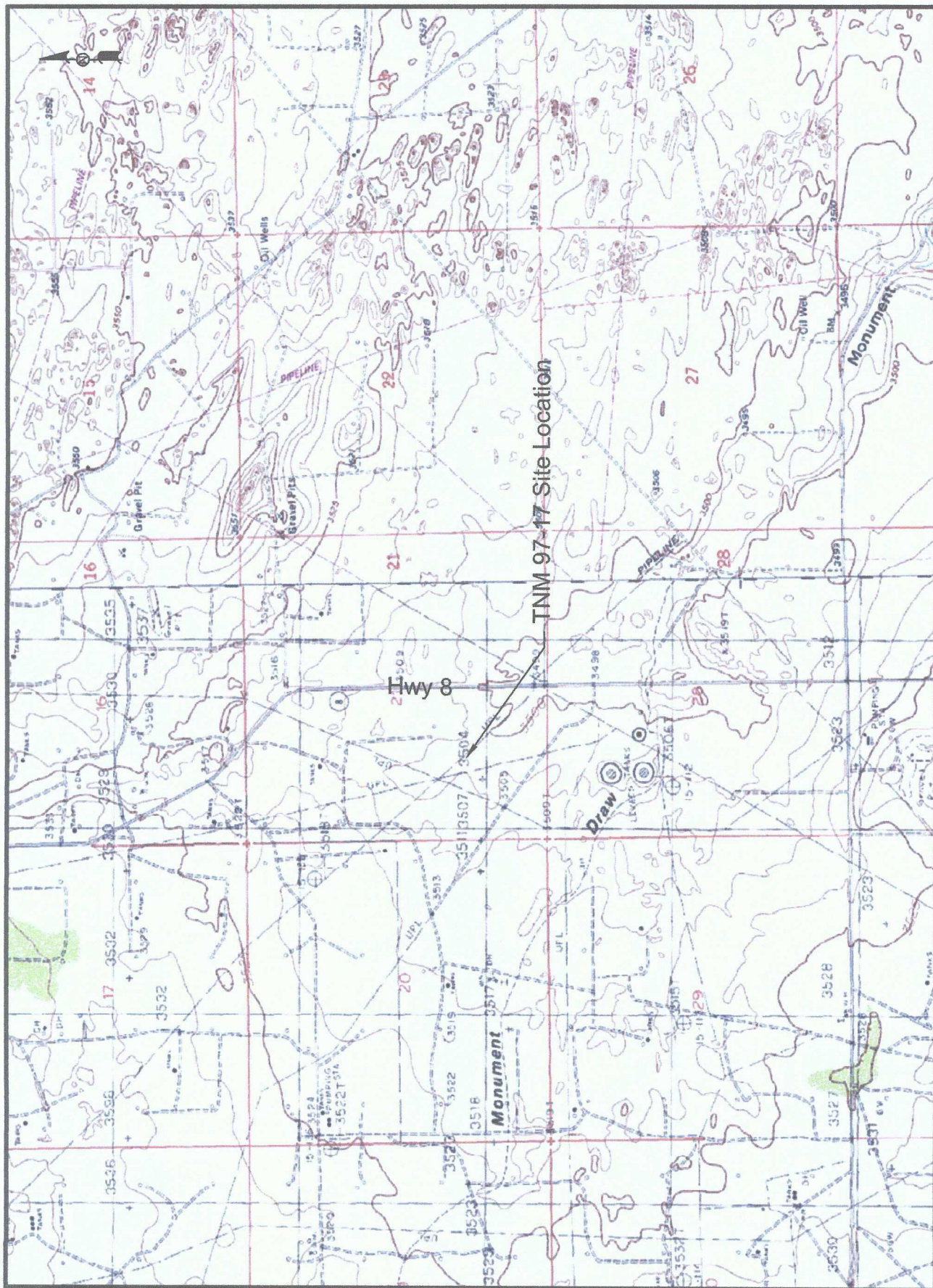


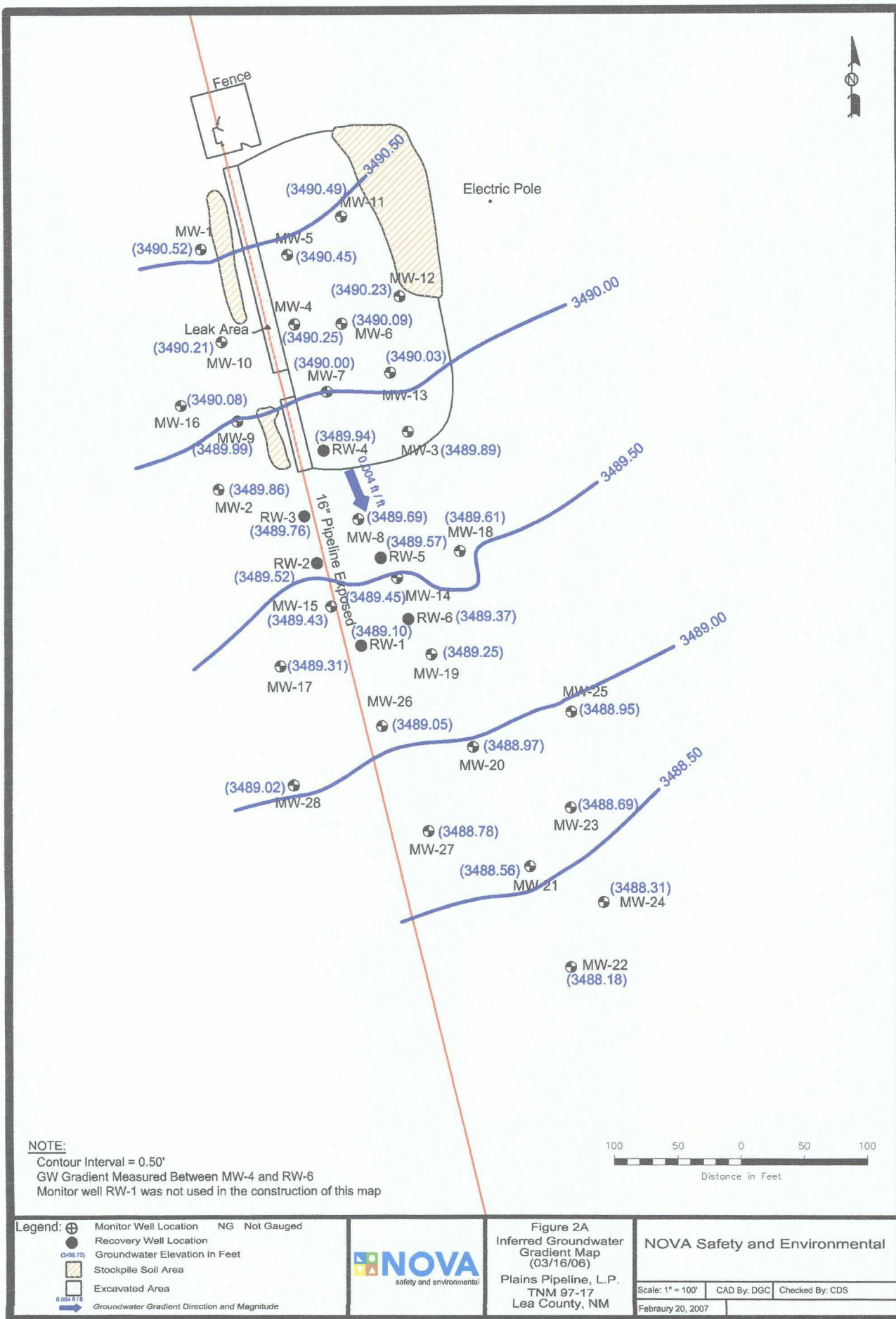
Figure 1
Site Location Map
Plains Marketing, L.P.
TNM 97-17
Lea County, NM

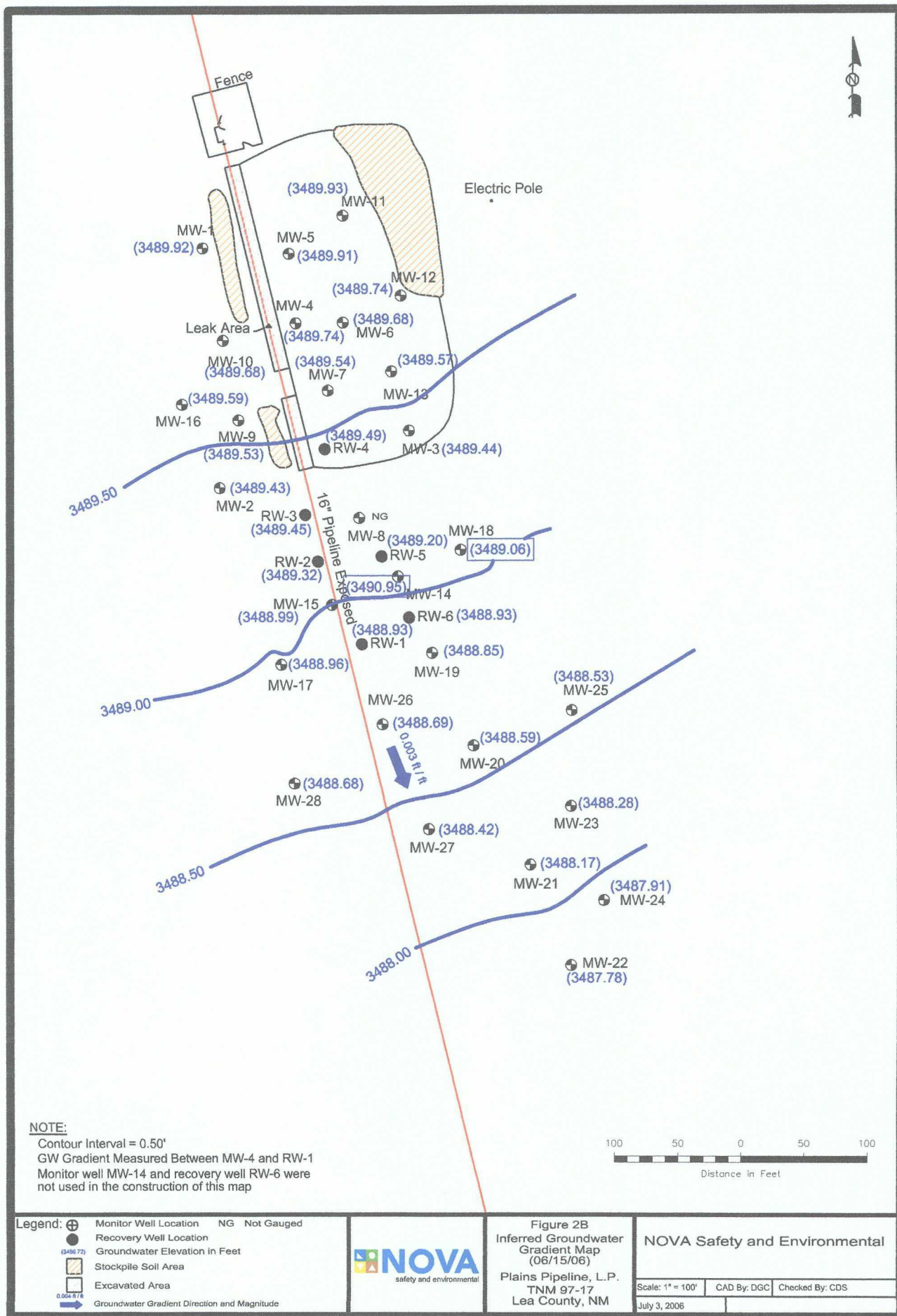
NOVA Safety and Environmental

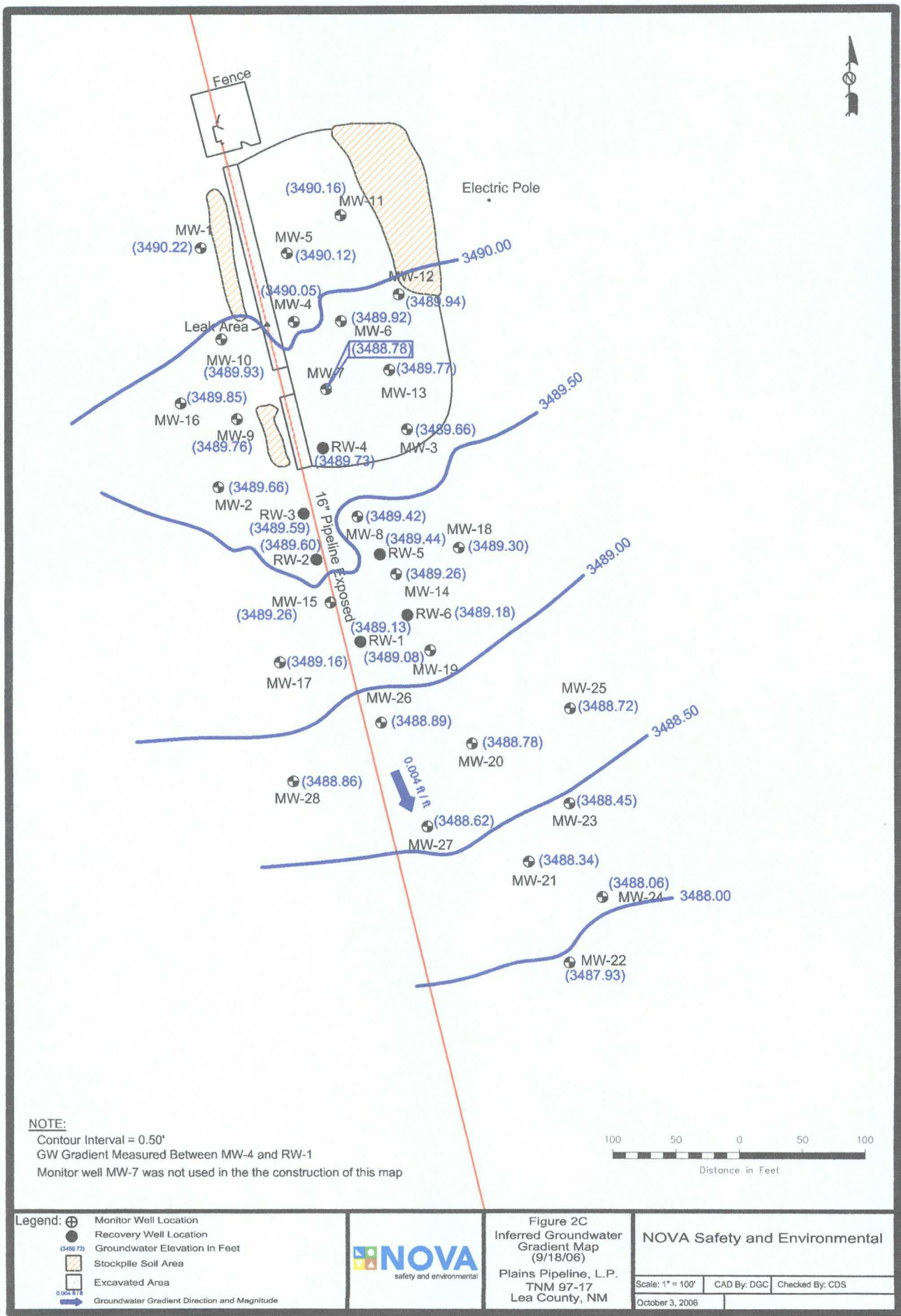
Scale: NTS
Drawn By: GDS
February 10, 2005
NE14 SW1/4 Sec 21 T20S R37E

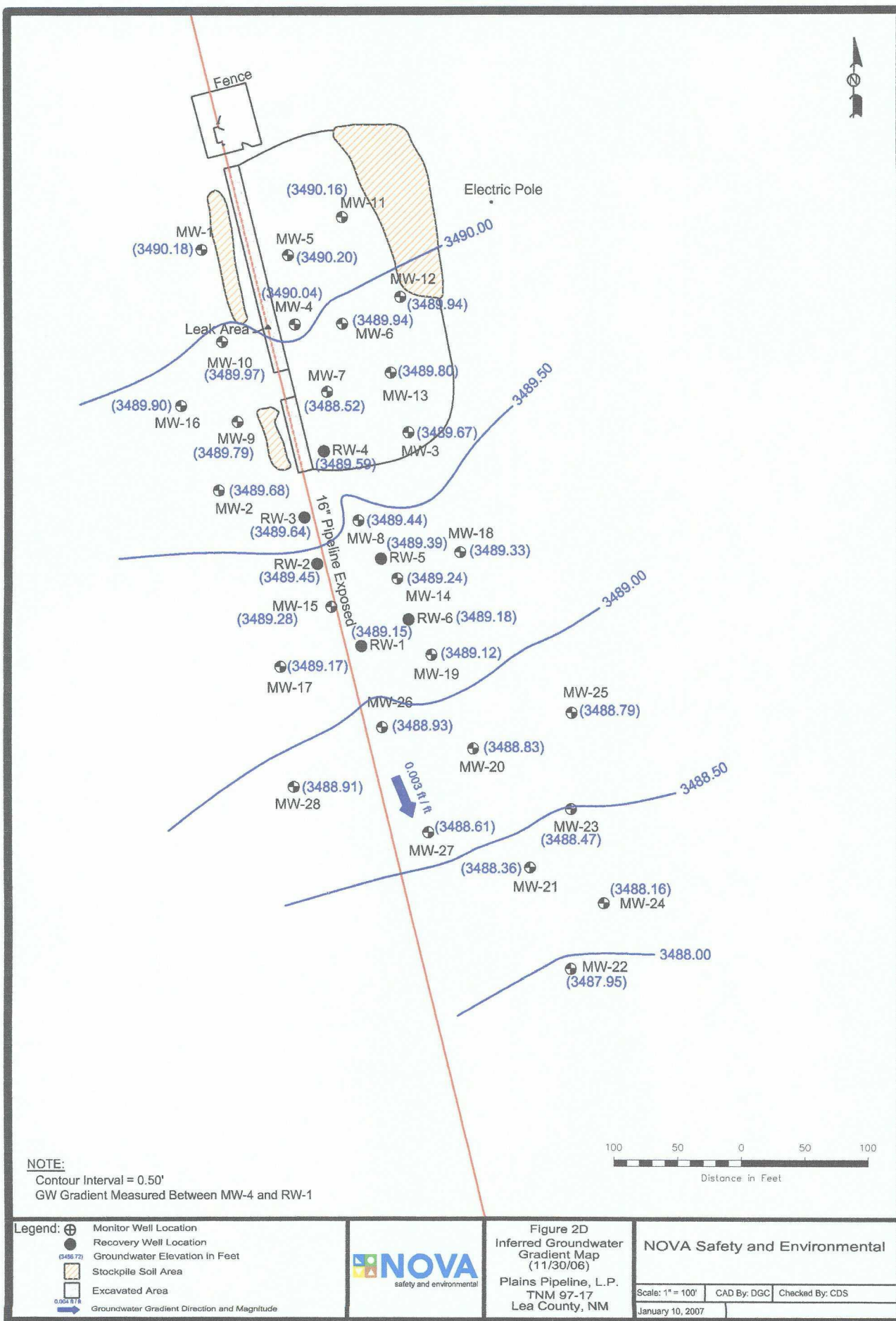


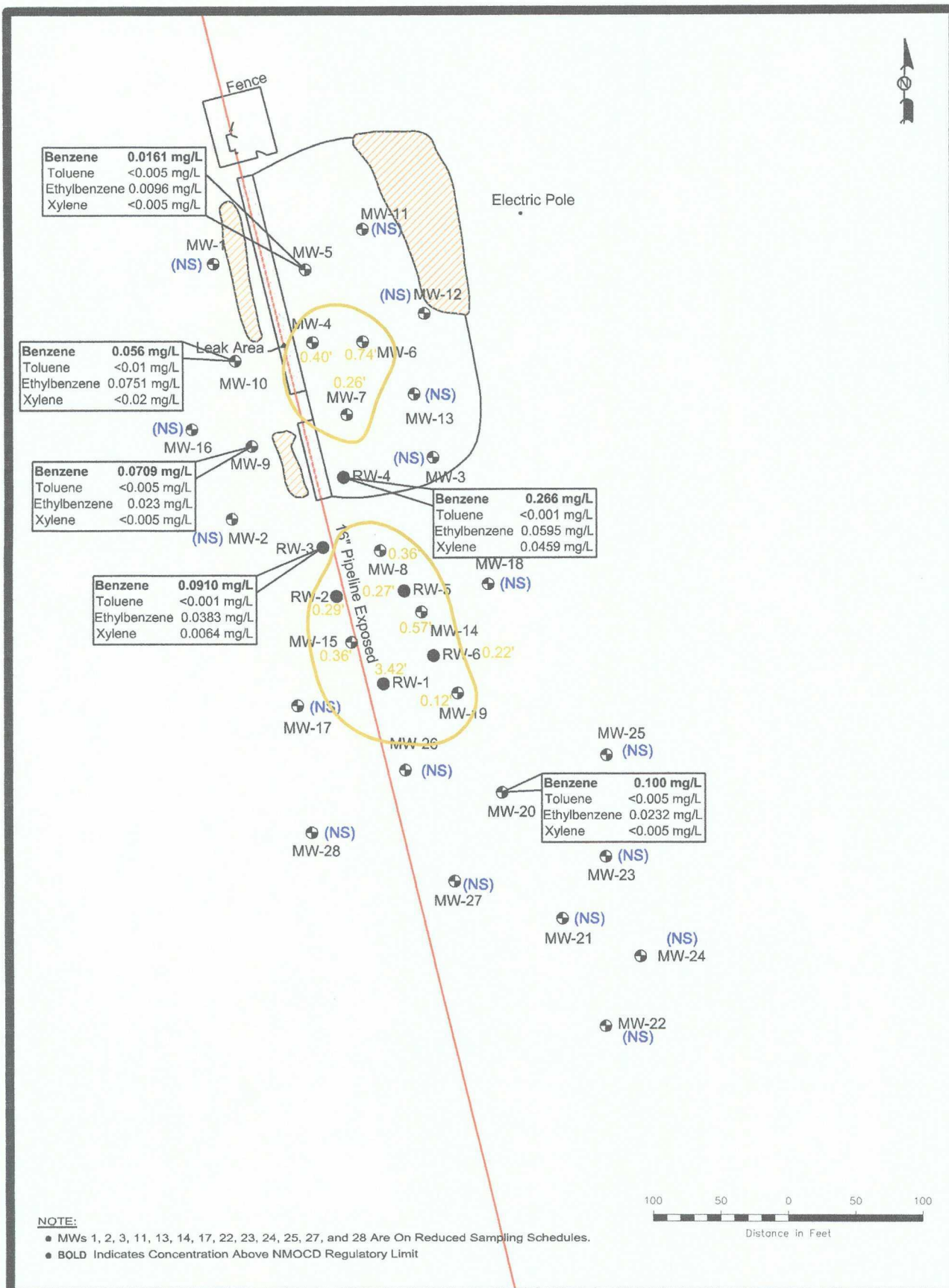
Lat. N32° 33' 24"N Long. W103° 15' 37.3"W











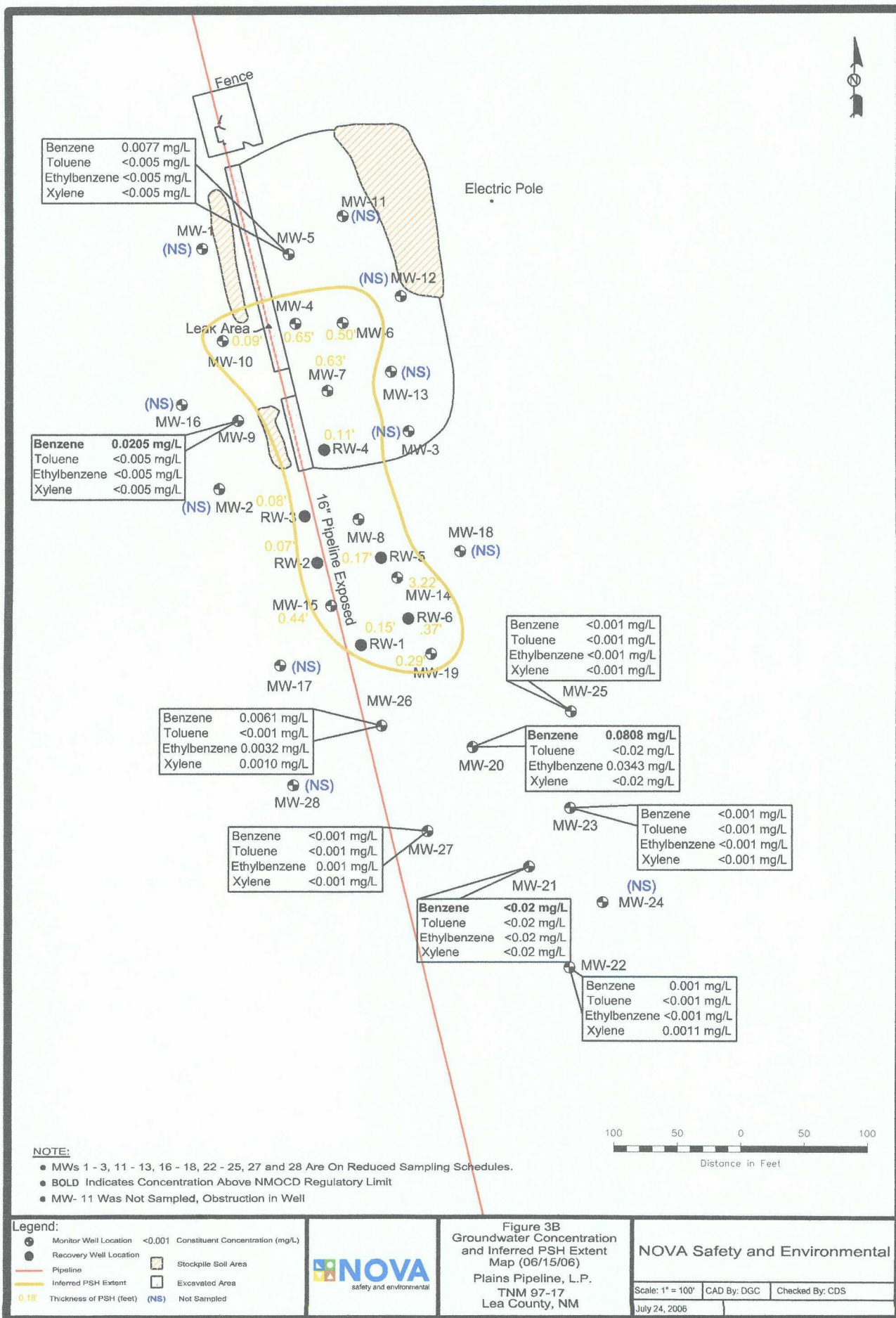
● Monitor Well Location	<0.001	Constituent Concentration (mg/L)
● Recovery Well Location		
— Pipeline		
— Inferred PSH Extent		
0.18' Thickness of PSH (feet)	(NS)	Not Sampled

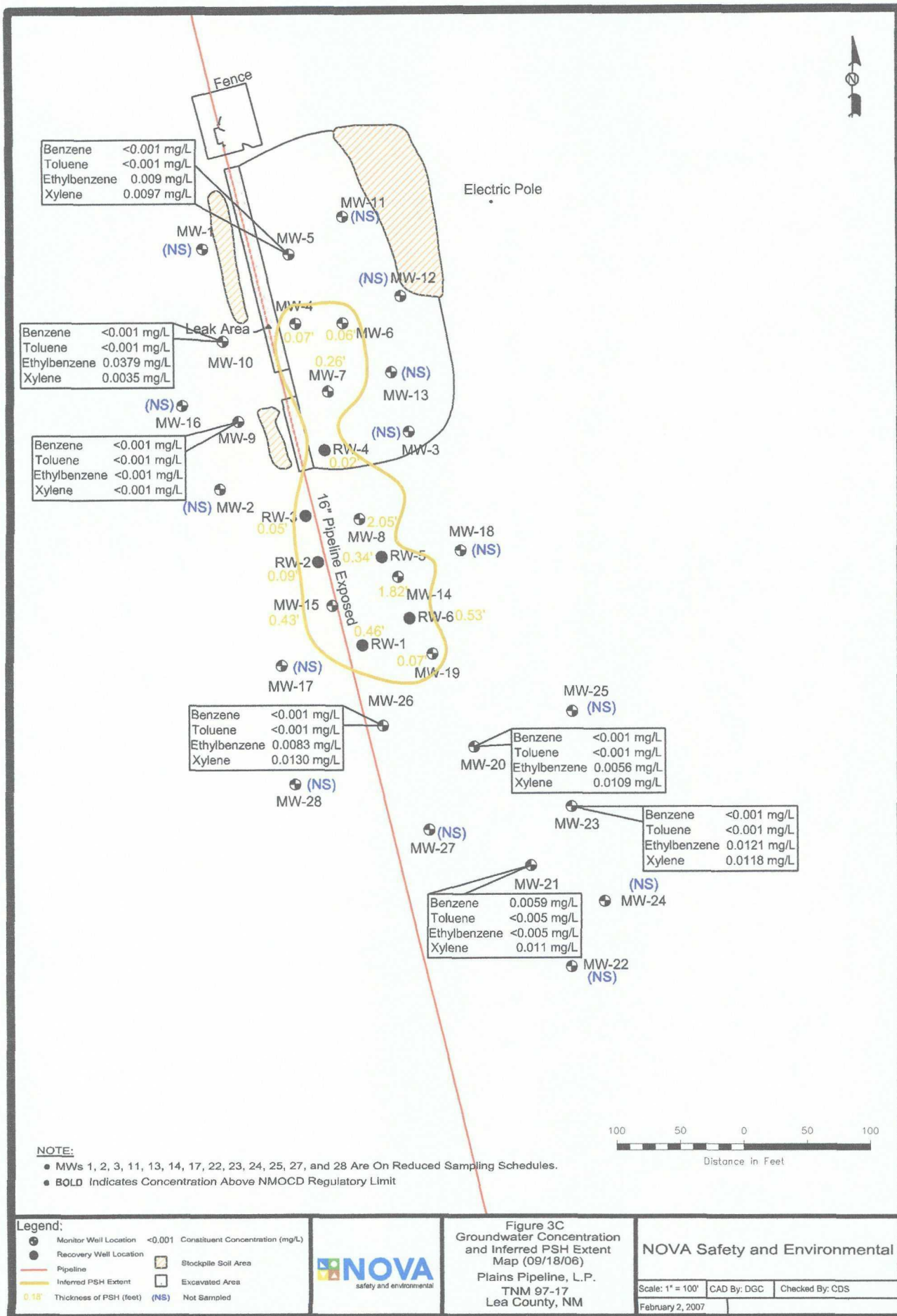


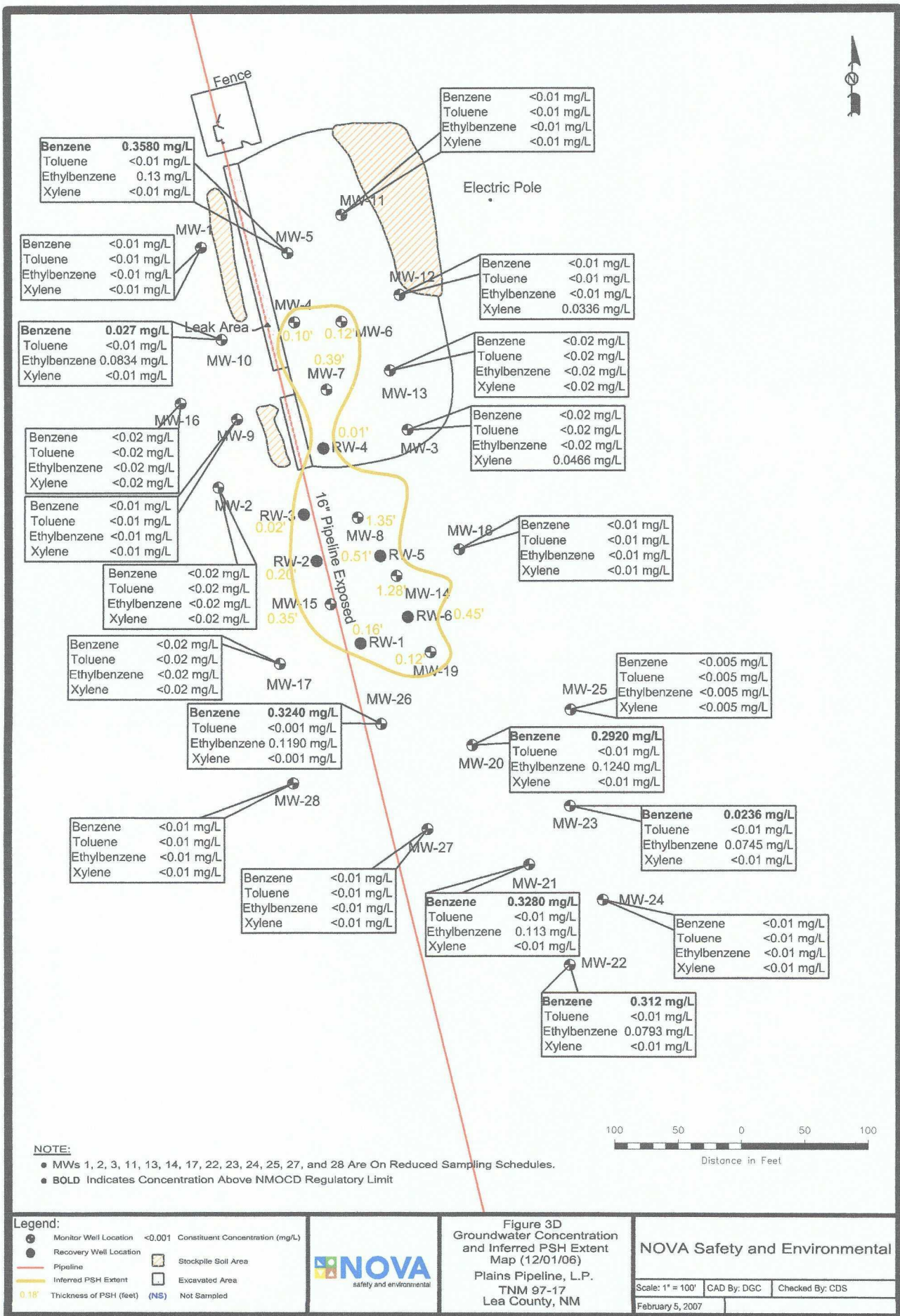
Figure 3A
Groundwater Concentration
and Inferred PSH Extent
Map (03/16/06)
Plains Pipeline, L.P.
TNM 97-17
Lea County, NM

NOVA Safety and Environmental

Scale: 1" = 100' CAD By: DGC Checked By: CDS
February 2, 2007







TABLES

TABLE 1

2006 GROUNDWATER ELEVATION DATA

TNM 97- 17
LEA COUNTY, NEW MEXICO
Plains Marketing, L.P.

WELL NUMBER	DATE MEASURED	TOP OF CASING ELEVATION	DEPTH TO PRODUCT	DEPTH TO WATER	PSH THICKNESS	CORRECTED GROU- WATER ELEVATION
MW-1	03/16/06	3510.90	-	20.38	0.00	3490.52
	06/15/06	3510.90	-	20.98	0.00	3489.92
	09/18/06	3510.90	-	20.68	0.00	3490.22
	11/30/06	3510.90	-	20.72	0.00	3490.18
MW-2	03/16/06	3509.23	-	19.37	0.00	3489.86
	06/15/06	3509.23	-	19.80	0.00	3489.43
	09/18/06	3509.23	-	19.57	0.00	3489.66
	11/30/06	3509.23	-	19.55	0.00	3489.68
MW-3	03/16/06	3508.82	-	18.93	0.00	3489.89
	06/15/06	3508.82	-	19.38	0.00	3489.44
	09/18/06	3508.82	-	19.16	0.00	3489.66
	11/30/06	3508.82	-	19.15	0.00	3489.67
MW-4	01/03/06	3509.15	18.89	19.37	0.48	3490.19
	01/09/06	3509.15	18.89	19.68	0.79	3490.14
	01/16/06	3509.15	18.86	19.40	0.54	3490.21
	01/23/06	3509.15	18.89	19.39	0.50	3490.19
	01/30/06	3509.15	18.85	19.40	0.55	3490.22
	02/06/06	3509.15	18.83	19.69	0.86	3490.19
	02/14/06	3509.15	18.80	19.27	0.47	3490.28
	02/21/06	3509.15	18.83	19.33	0.50	3490.25
	03/01/06	3509.15	18.86	19.31	0.45	3490.22
	03/06/06	3509.15	18.85	19.36	0.51	3490.22
	03/15/06	3509.15	18.81	19.20	0.39	3490.28
	03/16/06	3509.15	18.84	19.24	0.40	3490.25
	03/21/06	3509.15	18.85	19.31	0.46	3490.23
	03/28/06	3509.15	18.89	19.28	0.39	3490.20
	04/03/06	3509.15	18.76	19.24	0.48	3490.32
	04/10/06	3509.15	18.74	19.34	0.60	3490.32
	04/17/06	3509.15	18.74	19.23	0.49	3490.34
	05/01/06	3509.15	18.75	19.22	0.47	3490.33
	05/08/06	3509.15	18.77	19.26	0.49	3490.31
	05/15/06	3509.15	18.85	19.18	0.33	3490.25
	05/30/06	3509.15	18.92	21.02	2.10	3489.92
	06/05/06	3509.15	19.19	19.61	0.42	3489.90
	06/12/06	3509.15	19.31	19.65	0.34	3489.79
	06/15/06	3509.15	19.31	19.96	0.65	3489.74
	06/19/06	3509.15	19.37	20.41	1.04	3489.62
	07/03/06	3509.15	19.45	20.49	1.04	3489.54
	07/10/06	3509.15	19.45	20.60	1.15	3489.53
	07/17/06	3509.15	19.19	21.08	1.89	3489.68

TABLE 1

2006 GROUNDWATER ELEVATION DATA

TNM 97- 17
LEA COUNTY, NEW MEXICO
Plains Marketing, L.P.

WELL NUMBER	DATE MEASURED	TOP OF CASING ELEVATION	DEPTH TO PRODUCT	DEPTH TO WATER	PSH THICKNESS	CORRECTED GROU- WATER ELEVATION
MW-4	07/26/06	3509.15	19.30	21.00	1.70	3489.60
	07/31/06	3509.15	19.44	20.78	1.34	3489.51
	08/07/06	3509.15	19.44	20.88	1.44	3489.49
	08/17/06	3509.15	19.32	21.27	1.95	3489.54
	08/21/06	3509.15	19.31	20.65	1.34	3489.64
	09/06/06	3509.15	19.12	19.58	0.46	3489.96
	09/11/06	3509.15	19.12	19.48	0.36	3489.98
	09/18/06	3509.15	19.09	19.16	0.07	3490.05
	09/25/06	3509.15	19.05	19.55	0.50	3490.03
	10/02/06	3509.15	19.02	19.52	0.50	3490.06
	10/09/06	3509.15	19.12	19.41	0.29	3489.99
	10/17/06	3509.15	19.05	19.94	0.89	3489.97
	10/23/26	3509.15	19.11	19.29	0.18	3490.01
	10/30/06	3509.15	19.10	19.27	0.17	3490.02
	11/06/06	3509.15	19.09	19.74	0.65	3489.96
	11/13/06	3509.15	19.11	19.19	0.08	3490.03
	11/20/06	3509.15	19.10	19.28	0.18	3490.02
	11/27/06	3509.15	19.09	19.18	0.09	3490.05
	11/30/06	3509.15	19.10	19.20	0.10	3490.04
	12/04/06	3509.15	19.11	19.28	0.17	3490.01
	12/12/06	3509.15	19.12	19.24	0.12	3490.01
	12/18/06	3509.15	19.03	19.28	0.25	3490.08
MW-5	01/03/06	3509.96	sheen	19.55	0.00	3490.41
	01/09/06	3509.96	sheen	19.60	0.00	3490.36
	01/16/06	3509.96	sheen	19.54	0.00	3490.42
	01/23/06	3509.96	sheen	19.55	0.00	3490.41
	01/30/06	3509.96	sheen	19.55	0.00	3490.41
	02/06/06	3509.96	sheen	19.54	0.00	3490.42
	02/14/06	3509.96	sheen	19.53	0.00	3490.43
	02/21/06	3509.96	sheen	19.50	0.00	3490.46
	03/01/06	3509.96	sheen	19.49	0.00	3490.47
	03/06/06	3509.96	sheen	19.53	0.00	3490.43
	03/15/06	3509.96	sheen	19.50	0.00	3490.46
	03/16/06	3509.96	-	19.51	0.00	3490.45
	03/21/06	3509.96	sheen	19.53	0.00	3490.43
	03/28/06	3509.96	sheen	19.54	0.00	3490.42
	04/03/06	3509.96	sheen	19.45	0.00	3490.51
	04/17/06	3509.96	sheen	19.61	0.00	3490.35
	05/01/06	3509.96	sheen	19.68	0.00	3490.28
	05/08/06	3509.96	sheen	19.46	0.00	3490.50
	05/15/06	3509.96	sheen	19.51	0.00	3490.45
	05/30/06	3509.96	sheen	19.82	0.00	3490.14

TABLE 1

2006 GROUNDWATER ELEVATION DATA

TNM 97- 17
LEA COUNTY, NEW MEXICO
Plains Marketing, L.P.

WELL NUMBER	DATE MEASURED	TOP OF CASING ELEVATION	DEPTH TO PRODUCT	DEPTH TO WATER	PSH THICKNESS	CORRECTED GROU- WATER ELEVATION
MW-5	06/05/06	3509.96	sheen	19.90	0.00	3490.06
	06/12/06	3509.96	sheen	20.03	0.00	3489.93
	06/15/06	3509.96	-	20.05	0.00	3489.91
	06/19/06	3509.96	sheen	20.12	0.00	3489.84
	07/03/06	3509.96	sheen	20.26	0.00	3489.70
	07/10/06	3509.96		20.28	0.00	3489.68
	07/17/06	3509.96		21.00	0.00	3488.96
	07/26/06	3509.96	sheen	20.20	0.00	3489.76
	07/31/06	3509.96	sheen	20.27	0.00	3489.69
	08/07/06	3509.96		20.32	0.00	3489.64
	08/17/06	3509.96		20.26	0.00	3489.70
	08/21/06	3509.96		20.18	0.00	3489.78
	09/06/06	3509.96	sheen	19.86	0.00	3490.10
	09/11/06	3509.96	sheen	19.84	0.00	3490.12
	09/18/06	3509.96		19.84	0.00	3490.12
	09/25/06	3509.96	sheen	19.86	0.00	3490.10
	09/29/06	3509.96		19.88	0.00	3490.08
	10/02/06	3509.96	sheen	19.82	0.00	3490.14
	10/09/06	3509.96	sheen	19.88	0.00	3490.08
	10/17/06	3509.96	sheen	19.85	0.00	3490.11
	10/23/06	3509.96	sheen	19.84	0.00	3490.12
	10/30/06	3509.96	sheen	19.82	0.00	3490.14
	11/06/06	3509.96	sheen	19.83	0.00	3490.13
	11/13/06	3509.96	sheen	19.82	0.00	3490.14
	11/20/06	3509.96	sheen	19.91	0.00	3490.05
	11/27/06	3509.96	sheen	19.80	0.00	3490.16
	11/30/06	3509.96		19.76	0.00	3490.20
	12/04/06	3509.96	sheen	19.81	0.00	3490.15
	12/12/06	3509.96	sheen	19.74	0.00	3490.22
	12/18/06	3509.96	sheen	19.78	0.00	3490.18
MW-6	01/03/06	3507.94	17.78	17.88	0.10	3490.15
	01/09/06	3507.94	17.80	18.10	0.30	3490.10
	01/16/06	3507.94	17.74	17.99	0.25	3490.16
	01/23/06	3507.94	17.84	18.10	0.26	3490.06
	01/30/06	3507.94	17.78	18.08	0.30	3490.12
	02/06/06	3507.94	17.75	18.08	0.33	3490.14
	02/14/06	3507.94	17.72	17.97	0.25	3490.18
	02/21/06	3507.94	17.72	17.73	0.01	3490.22
	03/01/06	3507.94	17.70	17.75	0.05	3490.23
	03/06/06	3507.94	17.72	17.90	0.18	3490.19
	03/15/06	3507.94	17.72	17.97	0.25	3490.18
	03/16/06	3507.94	17.74	18.48	0.74	3490.09

TABLE 1

2006 GROUNDWATER ELEVATION DATA

TNM 97- 17
LEA COUNTY, NEW MEXICO
Plains Marketing, L.P.

WELL NUMBER	DATE MEASURED	TOP OF CASING ELEVATION	DEPTH TO PRODUCT	DEPTH TO WATER	PSH THICKNESS	CORRECTED GROU- WATER ELEVATION
MW-6	03/21/06	3507.94	17.73	18.05	0.32	3490.16
	03/28/06	3507.94	17.78	18.00	0.22	3490.13
	04/03/06	3507.94	17.67	17.90	0.23	3490.24
	04/10/06	3507.94	17.34	17.64	0.30	3490.56
	04/17/06	3507.94	17.67	17.94	0.27	3490.23
	05/01/06	3507.94	17.65	17.79	0.14	3490.27
	05/08/06	3507.94	17.67	17.81	0.14	3490.25
	05/15/06	3507.94	17.73	17.94	0.21	3490.18
	05/30/06	3507.94	17.91	18.41	0.50	3489.96
	06/05/06	3507.94	18.04	19.09	1.05	3489.74
	06/12/06	3507.94	18.14	18.74	0.60	3489.71
	06/15/06	3507.94	18.19	18.69	0.50	3489.68
	06/19/06	3507.94	18.27	19.07	0.80	3489.55
	07/03/06	3507.94	18.37	18.76	0.39	3489.51
	07/10/06	3507.94	18.43	18.70	0.27	3489.47
	07/17/06	3507.94	17.96	18.48	0.52	3489.90
	07/26/06	3507.94	18.40	18.63	0.23	3489.51
	07/31/06	3507.94	18.41	18.62	0.21	3489.50
	08/07/06	3507.94	18.44	18.64	0.20	3489.47
	08/17/06	3507.94	18.39	18.67	0.28	3489.51
	08/21/06	3507.94	18.34	18.35	0.01	3489.60
	09/06/06	3507.94	18.07	18.12	0.05	3489.86
	09/11/06	3507.94	18.04	18.20	0.16	3489.88
	09/18/06	3507.94	18.01	18.07	0.06	3489.92
	09/25/06	3507.94	18.02	18.20	0.18	3489.89
	10/02/06	3507.94	18.18	18.21	0.03	3489.76
	10/09/06	3507.94	18.05	18.35	0.30	3489.85
	10/17/06	3507.94	18.05	18.25	0.20	3489.86
	10/23/06	3507.94	18.03	18.16	0.13	3489.89
	10/30/06	3507.94	18.01	18.14	0.13	3489.91
	11/06/06	3507.94	18.00	18.10	0.10	3489.93
	11/13/06	3507.94	17.96	18.15	0.19	3489.95
	11/20/06	3507.94	17.99	18.18	0.19	3489.92
	11/27/06	3507.94	17.93	18.12	0.19	3489.98
	11/30/06	3507.94	17.98	18.10	0.12	3489.94
	12/04/06	3507.94	17.98	18.37	0.39	3489.90
	12/12/06	3507.94	17.95	18.36	0.41	3489.93
	12/18/06	3507.94	17.90	18.10	0.20	3490.01
MW-7	01/03/06	3507.08	17.10	17.31	0.21	3489.95
	01/09/06	3507.08	17.10	17.49	0.39	3489.92
	01/16/06	3507.08	17.05	17.35	0.30	3489.99
	01/23/06	3507.08	17.17	17.39	0.22	3489.88

TABLE 1

2006 GROUNDWATER ELEVATION DATA

TNM 97- 17
LEA COUNTY, NEW MEXICO
Plains Marketing, L.P.

WELL NUMBER	DATE MEASURED	TOP OF CASING ELEVATION	DEPTH TO PRODUCT	DEPTH TO WATER	PSH THICKNESS	CORRECTED GROU- WATER ELEVATION
MW-7	01/30/06	3507.08	17.05	17.40	0.35	3489.98
	02/06/06	3507.08	17.10	17.42	0.32	3489.93
	02/14/06	3507.08	17.01	17.30	0.29	3490.03
	02/21/06	3507.08	17.01	17.30	0.29	3490.03
	03/01/06	3507.08	16.99	17.33	0.34	3490.04
	03/06/06	3507.08	17.03	17.33	0.30	3490.01
	03/15/06	3507.08	17.00	17.33	0.33	3490.03
	03/16/06	3507.08	17.04	17.30	0.26	3490.00
	03/21/06	3507.08	17.04	17.33	0.29	3490.00
	03/28/06	3507.08	17.05	17.31	0.26	3489.99
	04/03/06	3507.08	16.97	17.23	0.26	3490.07
	04/10/06	3507.08	16.95	17.18	0.23	3490.10
	04/17/06	3507.08	16.97	17.29	0.32	3490.06
	05/01/06	3507.08	16.94	17.18	0.24	3490.10
	05/08/06	3507.08	16.95	17.31	0.36	3490.08
	05/15/06	3507.08	17.00	17.42	0.42	3490.02
	05/30/06	3507.08	17.23	17.91	0.68	3489.75
	06/05/06	3507.08	17.30	17.93	0.63	3489.69
	06/12/06	3507.08	17.42	18.47	1.05	3489.50
	06/15/06	3507.08	17.45	18.08	0.63	3489.54
	06/19/06	3507.08	17.51	18.24	0.73	3489.46
	07/03/06	3507.08	17.64	18.13	0.49	3489.37
	07/10/06	3507.08	17.66	18.04	0.38	3489.36
	07/17/06	3507.08	17.52	17.74	0.22	3489.53
	07/26/06	3507.08	17.60	18.11	0.51	3489.40
	07/31/06	3507.08	17.66	18.03	0.37	3489.36
	08/07/06	3507.08	17.69	18.07	0.38	3489.33
	08/17/06	3507.08	17.64	17.95	0.31	3489.39
	08/21/06	3507.08	17.59	17.84	0.25	3489.45
	09/06/06	3507.08	17.30	17.57	0.27	3489.74
	09/11/06	3507.08	17.28	17.62	0.34	3489.75
	09/18/06	3507.08	18.26	18.52	0.26	3488.78
	09/25/06	3507.08	17.24	17.65	0.41	3489.78
	10/02/06	3507.08	17.20	17.61	0.41	3489.82
	10/09/06	3507.08	17.30	17.72	0.42	3489.72
	10/17/06	3507.08	17.30	17.75	0.45	3489.71
	10/23/06	3507.08	17.28	17.62	0.34	3489.75
	10/30/06	3507.08	17.27	17.60	0.33	3489.76
	11/06/06	3507.08	17.24	17.59	0.35	3489.79
	11/13/06	3507.08	17.20	17.50	0.30	3489.84
	11/20/06	3507.08	17.23	17.62	0.39	3489.79
	11/27/06	3507.08	17.17	17.48	0.31	3489.86
	11/30/06	3507.08	17.20	17.59	0.39	3489.82

TABLE 1

2006 GROUNDWATER ELEVATION DATA

TNM 97- 17
LEA COUNTY, NEW MEXICO
Plains Marketing, L.P.

WELL NUMBER	DATE MEASURED	TOP OF CASING ELEVATION	DEPTH TO PRODUCT	DEPTH TO WATER	PSH THICKNESS	CORRECTED GROU- WATER ELEVATION
MW-7	12/04/06	3507.08	17.26	17.82	0.56	3489.74
	12/12/06	3507.08	17.27	17.82	0.55	3489.73
	12/18/06	3507.08	17.05	17.54	0.49	3489.96
MW-8	01/03/06	3506.39	16.66	17.72	1.06	3489.57
	01/09/06	3506.39	16.70	17.20	0.50	3489.62
	01/16/06	3506.39	16.64	17.18	0.54	3489.67
	01/23/06	3506.39	16.67	17.18	0.51	3489.64
	01/30/06	3506.39	16.71	17.20	0.49	3489.61
	02/06/06	3506.39	16.63	17.30	0.67	3489.66
	02/14/06	3506.39	16.63	17.33	0.70	3489.66
	02/21/06	3506.39	16.60	17.40	0.80	3489.67
	03/01/06	3506.39	16.61	17.05	0.44	3489.71
	03/06/06	3506.39	16.69	17.08	0.39	3489.64
	03/16/06	3506.39	16.65	17.01	0.36	3489.69
	03/17/06	3506.39	16.64	17.05	0.41	3489.69
	03/21/06	3506.39	16.67	17.13	0.46	3489.65
	03/28/06	3506.39	16.69	17.10	0.41	3489.64
	04/03/06	3506.39	16.61	16.94	0.33	3489.73
	04/10/06	3506.39	16.67	16.88	0.21	3489.69
	04/17/06	3506.39	16.59	16.82	0.23	3489.77
	05/01/06	3506.39	16.57	16.93	0.36	3489.77
	05/08/06	3506.39	16.60	17.04	0.44	3489.72
	05/15/06	3506.39	16.68	17.00	0.32	3489.66
	05/30/06	3506.39	16.77	17.74	0.97	3489.47
	06/05/06	3506.39	16.90	17.77	0.87	3489.36
	06/12/06	3506.39	17.02	17.88	0.86	3489.24
	06/15/06	3506.39	Well Obstructed			
	06/19/06	3506.39	Well Obstructed			
	07/03/06	3506.39	Well Obstructed			
	07/10/06	3506.39	Well Obstructed			
	07/17/06	3506.39	Well Obstructed			
	07/26/06	3506.39	Well Obstructed			
	07/31/06	3506.39	Well Obstructed			
	08/07/06	3506.39	Well Obstructed			
	08/17/06	3506.39	Well Obstructed			
	08/21/06	3506.39	Well Obstructed			
	09/06/06	3506.39	Well Obstructed			
	09/11/06	3506.39	Well Obstructed			
	09/18/06	3506.39	16.66	18.71	2.05	3489.42
	09/25/06	3506.39	16.70	17.69	0.99	3489.54
	10/09/06	3506.39	16.70	18.93	2.23	3489.36
	10/17/06	3506.39	16.67	18.70	2.03	3489.42

TABLE 1

2006 GROUNDWATER ELEVATION DATA

TNM 97- 17
LEA COUNTY, NEW MEXICO
Plains Marketing, L.P.

WELL NUMBER	DATE MEASURED	TOP OF CASING ELEVATION	DEPTH TO PRODUCT	DEPTH TO WATER	PSH THICKNESS	CORRECTED GROU- WATER ELEVATION
MW-8	11/30/06	3506.39	16.75	18.10	1.35	3489.44
	12/18/06	3506.39	16.80	18.04	1.24	3489.40
MW-9	01/03/06	3509.33	sheen	19.37	0.00	3489.96
	01/09/06	3509.33	sheen	19.43	0.00	3489.90
	01/16/06	3509.33	sheen	19.38	0.00	3489.95
	01/23/06	3509.33	sheen	19.40	0.00	3489.93
	01/30/06	3509.33	sheen	19.39	0.00	3489.94
	02/06/06	3509.33	sheen	19.38	0.00	3489.95
	02/14/06	3509.33	sheen	19.35	0.00	3489.98
	02/21/06	3509.33	sheen	19.36	0.00	3489.97
	03/01/06	3509.33	sheen	19.34	0.00	3489.99
	03/06/06	3509.33	sheen	19.35	0.00	3489.98
	03/15/06	3509.33	sheen	19.34	0.00	3489.99
	03/16/06	3509.33		19.34	0.00	3489.99
	03/21/06	3509.33	sheen	19.35	0.00	3489.98
	03/28/06	3509.33	sheen	19.35	0.00	3489.98
	04/03/06	3509.33	sheen	19.29	0.00	3490.04
	04/17/06	3509.33	sheen	19.19	0.00	3490.14
	05/01/06	3509.33	sheen	19.27	0.00	3490.06
	05/08/06	3509.33	sheen	19.28	0.00	3490.05
	05/15/06	3509.33	sheen	19.37	0.00	3489.96
	05/30/06	3509.33	sheen	19.58	0.00	3489.75
	06/05/06	3509.33	sheen	19.68	0.00	3489.65
	06/12/06	3509.33	sheen	19.78	0.00	3489.55
	06/15/06	3509.33	-	19.80	0.00	3489.53
	06/19/06	3509.33	sheen	19.87	0.00	3489.46
	09/06/06	3509.33	sheen	19.61	0.00	3489.72
	09/11/06	3509.33	sheen	19.58	0.00	3489.75
	09/18/06	3509.33	-	19.57	0.00	3489.76
	09/29/06	3509.33	-	19.59	0.00	3489.74
	11/30/06	3509.33	-	19.54	0.00	3489.79
MW-10	01/03/06	3509.91	19.75	19.76	0.01	3490.16
	01/09/06	3509.91	19.79	19.80	0.01	3490.12
	01/16/06	3509.91	19.74	19.75	0.01	3490.17
	01/23/06	3509.91	19.76	19.77	0.01	3490.15
	01/30/06	3509.91	19.74	19.75	0.01	3490.17
	02/06/06	3509.91	19.74	19.75	0.01	3490.17
	02/14/06	3509.91	19.72	19.73	0.01	3490.19
	02/21/06	3509.91	sheen	19.73	0.00	3490.18
	03/01/06	3509.91	sheen	19.70	0.00	3490.21
	03/06/06	3509.91	19.71	19.72	0.01	3490.20

TABLE 1

2006 GROUNDWATER ELEVATION DATA

TNM 97- 17
LEA COUNTY, NEW MEXICO
Plains Marketing, L.P.

WELL NUMBER	DATE MEASURED	TOP OF CASING ELEVATION	DEPTH TO PRODUCT	DEPTH TO WATER	PSH THICKNESS	CORRECTED GROU- WATER ELEVATION
MW-10	03/15/06	3509.91	sheen	19.71	0.00	3490.20
	03/16/06	3509.91	19.70	19.71	0.01	3490.21
	03/21/06	3509.91	sheen	19.72	0.00	3490.19
	03/28/06	3509.91	sheen	19.73	0.00	3490.18
	04/03/06	3509.91	sheen	19.65	0.00	3490.26
	04/17/06	3509.91	sheen	19.62	0.00	3490.29
	05/01/06	3509.91	sheen	19.64	0.00	3490.27
	05/08/06	3509.91	sheen	19.66	0.00	3490.25
	05/15/06	3509.91	sheen	19.75	0.00	3490.16
	05/30/06	3509.91	sheen	19.98	0.00	3489.93
	06/05/06	3509.91	20.07	20.67	0.60	3489.75
	06/15/06	3509.91	20.22	20.31	0.09	3489.68
	06/19/06	3509.91	sheen	20.29	0.00	3489.62
	07/03/06	3509.91	sheen	20.41	0.00	3489.50
	07/10/06	3509.91	20.41	20.46	0.05	3489.49
	07/17/06	3509.91	20.26	20.39	0.13	3489.63
	07/26/06	3509.91	20.31	20.36	0.05	3489.59
	07/31/06	3509.91	20.39	20.48	0.09	3489.51
	08/07/06	3509.91	20.42	20.51	0.09	3489.48
	08/17/06	3509.91	sheen	20.33	0.00	3489.58
	08/21/06	3509.91	sheen	20.26	0.00	3489.65
	09/06/06	3509.91	sheen	20.00	0.00	3489.91
	09/11/06	3509.91	sheen	19.96	0.00	3489.95
	09/18/06	3509.91	sheen	19.98	0.00	3489.93
	09/25/06	3509.91	sheen	19.98	0.00	3489.93
	09/29/06	3509.91	sheen	19.96	0.00	3489.95
	10/02/06	3509.91	sheen	19.95	0.00	3489.96
	10/09/06	3509.91	sheen	20.00	0.00	3489.91
	10/17/06	3509.91	sheen	19.98	0.00	3489.93
	10/23/06	3509.91	sheen	19.98	0.00	3489.93
	10/30/06	3509.91	sheen	19.96	0.00	3489.95
	11/06/06	3509.91	sheen	19.26	0.00	3490.65
	11/13/06	3509.91	sheen	19.48	0.00	3490.43
	11/20/06	3509.91	sheen	20.01	0.00	3489.90
	11/27/06	3509.91	sheen	19.45	0.00	3490.46
	11/30/06	3509.91	sheen	19.94	0.00	3489.97
	12/04/06	3509.91	sheen	19.94	0.00	3489.97
	12/12/06	3509.91	sheen	19.94	0.00	3489.97
	12/18/06	3509.91	sheen	19.93	0.00	3489.98
MW-11	03/16/06	3509.27	-	18.78	0.00	3490.49
	06/15/06	3509.27	-	19.34	0.00	3489.93
	09/18/06	3509.27	-	19.11	0.00	3490.16

TABLE 1

2006 GROUNDWATER ELEVATION DATA

TNM 97- 17
LEA COUNTY, NEW MEXICO
Plains Marketing, L.P.

WELL NUMBER	DATE MEASURED	TOP OF CASING ELEVATION	DEPTH TO PRODUCT	DEPTH TO WATER	PSH THICKNESS	CORRECTED GROU- WATER ELEVATION
MW-11	11/30/06	3509.27	-	19.11	0.00	3490.16
MW-12	03/16/06	3508.63	-	18.40	0.00	3490.23
	06/15/06	3508.63	-	18.89	0.00	3489.74
	09/18/06	3508.63	-	18.69	0.00	3489.94
	11/30/06	3508.63	-	18.69	0.00	3489.94
MW-13	03/16/06	3507.96	-	17.93	0.00	3490.03
	06/15/06	3507.96	-	18.39	0.00	3489.57
	09/18/06	3507.96	-	18.19	0.00	3489.77
	11/30/06	3507.96	-	18.16	0.00	3489.80
MW-14	01/03/06	3507.45	17.90	18.80	0.90	3489.42
	01/09/06	3507.45	17.95	18.60	0.65	3489.40
	01/16/06	3507.45	17.93	18.76	0.83	3489.40
	01/23/06	3507.45	17.94	18.63	0.69	3489.41
	01/30/06	3507.45	17.99	18.60	0.61	3489.37
	02/06/06	3507.45	17.95	18.85	0.90	3489.37
	02/14/06	3507.45	17.90	18.61	0.71	3489.44
	02/21/06	3507.45	17.86	18.66	0.80	3489.47
	03/01/06	3507.45	17.89	18.61	0.72	3489.45
	03/06/06	3507.45	17.90	18.42	0.52	3489.47
	03/16/06	3507.45	17.91	18.48	0.57	3489.45
	03/17/06	3507.45	17.90	18.80	0.90	3489.42
	03/21/06	3507.45	17.90	18.90	1.00	3489.40
	03/28/06	3507.45	17.93	18.81	0.88	3489.39
	04/03/06	3507.45	17.83	18.42	0.59	3489.53
	04/10/06	3507.45	17.81	18.45	0.64	3489.54
	04/17/06	3507.45	17.82	18.48	0.66	3489.53
	05/01/06	3507.45	17.74	18.50	0.76	3489.60
	05/08/06	3507.45	17.81	18.67	0.86	3489.51
	05/15/06	3507.45	17.86	18.41	0.55	3489.51
	05/30/06	3507.45	18.18	20.11	1.93	3488.98
	06/05/06	3507.45	18.15	19.51	1.36	3489.10
	06/12/06	3507.45	18.34	19.44	1.10	3488.95
	06/15/06	3507.45	16.02	19.24	3.22	3490.95
	06/19/06	3507.45	18.31	19.58	1.27	3488.95
	07/03/06	3507.45	18.41	19.78	1.37	3488.83
	07/10/06	3507.45	18.39	19.46	1.07	3488.90
	07/17/06	3507.45	18.24	19.51	1.27	3489.02
	07/26/06	3507.45	18.31	20.10	1.79	3488.87
	07/31/06	3507.45	18.39	19.58	1.19	3488.88
	08/07/06	3507.45	18.46	19.59	1.13	3488.82

TABLE 1

2006 GROUNDWATER ELEVATION DATA

TNM 97- 17
LEA COUNTY, NEW MEXICO
Plains Marketing, L.P.

WELL NUMBER	DATE MEASURED	TOP OF CASING ELEVATION	DEPTH TO PRODUCT	DEPTH TO WATER	PSH THICKNESS	CORRECTED GROU- WATER ELEVATION
MW-14	08/17/06	3507.45	18.43	18.96	0.53	3488.94
	08/21/06	3507.45	18.46	18.91	0.45	3488.92
	09/06/06	3507.45	17.91	20.28	2.37	3489.18
	09/11/06	3507.45	17.91	19.79	1.88	3489.26
	09/18/06	3507.45	17.92	19.74	1.82	3489.26
	09/25/06	3507.45	17.91	20.18	2.27	3489.20
	10/02/06	3507.45	17.89	20.16	2.27	3489.22
	10/09/06	3507.45	17.90	20.50	2.60	3489.16
	10/17/06	3507.45	18.20	19.44	1.24	3489.06
	10/23/06	3507.45	17.91	20.04	2.13	3489.22
	10/30/06	3507.45	17.90	20.00	2.10	3489.24
	11/06/06	3507.45	17.94	20.26	2.32	3489.16
	11/13/06	3507.45	17.94	19.79	1.85	3489.23
	11/20/06	3507.45	17.98	19.52	1.54	3489.24
	11/27/06	3507.45	17.91	19.76	1.85	3489.26
	11/30/06	3507.45	18.02	19.30	1.28	3489.24
	12/04/06	3507.45	18.02	19.85	1.83	3489.16
	12/12/06	3507.45	18.11	19.24	1.13	3489.17
	12/18/06	3507.45	17.98	19.02	1.04	3489.31
MW-15	01/03/06	3506.48	17.03	17.63	0.60	3489.36
	01/09/06	3506.48	17.06	17.56	0.50	3489.35
	01/16/06	3506.48	17.02	17.50	0.48	3489.39
	01/23/06	3506.48	17.06	17.40	0.34	3489.37
	01/30/06	3506.48	17.10	17.38	0.28	3489.34
	02/06/06	3506.48	17.00	17.41	0.41	3489.42
	02/14/06	3506.48	17.08	17.41	0.33	3489.35
	02/21/06	3506.48	16.98	17.41	0.43	3489.44
	03/01/06	3506.48	16.95	17.38	0.43	3489.47
	03/06/06	3506.48	16.99	17.33	0.34	3489.44
	03/16/06	3506.48	17.00	17.36	0.36	3489.43
	03/17/06	3506.48	17.01	17.36	0.35	3489.42
	03/21/06	3506.48	16.99	17.39	0.40	3489.43
	03/28/06	3506.48	17.02	17.37	0.35	3489.41
	04/03/06	3506.48	16.96	17.31	0.35	3489.47
	04/17/06	3506.48	16.92	17.21	0.29	3489.52
	05/01/06	3506.48	16.91	17.11	0.20	3489.54
	05/08/06	3506.48	16.94	17.27	0.33	3489.49
	05/15/06	3506.48	16.99	17.42	0.43	3489.43
	06/05/06	3506.48	17.22	17.71	0.49	3489.19
	06/12/06	3506.48	17.33	17.96	0.63	3489.06
	06/15/06	3506.48	17.42	17.86	0.44	3488.99
	06/19/06	3506.48	17.41	17.89	0.48	3489.00

TABLE 1
2006 GROUNDWATER ELEVATION DATA

TNM 97- 17
LEA COUNTY, NEW MEXICO
Plains Marketing, L.P.

WELL NUMBER	DATE MEASURED	TOP OF CASING ELEVATION	DEPTH TO PRODUCT	DEPTH TO WATER	PSH THICKNESS	CORRECTED GROU- WATER ELEVATION
MW-15	07/03/06	3506.48	17.57	17.96	0.39	3488.85
	07/10/06	3506.48	17.56	18.00	0.44	3488.85
	07/17/06	3506.48	17.37	17.86	0.49	3489.04
	07/26/06	3506.48	17.51	18.14	0.63	3488.88
	07/31/06	3506.48	17.49	17.98	0.49	3488.92
	08/07/06	3506.48	17.54	17.99	0.45	3488.87
	08/17/06	3506.48	17.47	18.18	0.71	3488.90
	08/21/06	3506.48	17.34	17.90	0.56	3489.06
	09/06/06	3506.48	17.11	17.65	0.54	3489.29
	09/11/06	3506.48	17.17	17.85	0.68	3489.21
	09/18/06	3506.48	17.16	17.59	0.43	3489.26
	09/25/06	3506.48	17.22	17.88	0.66	3489.16
	10/02/06	3506.48	17.20	17.85	0.65	3489.18
	10/09/06	3506.48	17.13	17.91	0.78	3489.23
	10/17/06	3506.48	17.20	18.15	0.95	3489.14
	10/23/06	3506.48	17.11	17.82	0.71	3489.26
	10/30/06	3506.48	17.10	17.80	0.70	3489.28
	11/06/06	3506.48	17.15	17.80	0.65	3489.23
	11/13/06	3506.48	17.16	17.76	0.60	3489.23
	11/20/06	3506.48	17.15	17.70	0.55	3489.25
	11/27/06	3506.48	17.13	17.74	0.61	3489.26
	11/30/06	3506.48	17.15	17.50	0.35	3489.28
	12/04/06	3506.48	17.23	17.69	0.46	3489.18
	12/12/06	3506.48	17.29	17.76	0.47	3489.12
	12/18/06	3506.48	17.10	17.73	0.63	3489.29
MW-16	03/16/06	3509.38	-	19.30	0.00	3490.08
	06/15/06	3509.38	-	19.79	0.00	3489.59
	09/18/06	3509.38	-	19.53	0.00	3489.85
	11/30/06	3509.38	-	19.48	0.00	3489.90
MW-17	03/16/06	3507.56	-	18.25	0.00	3489.31
	06/15/06	3507.56	-	18.60	0.00	3488.96
	09/18/06	3507.56	-	18.40	0.00	3489.16
	11/30/06	3507.56	-	18.39	0.00	3489.17
MW-18	03/16/06	3509.12	-	19.51	0.00	3489.61
	06/15/06	3509.12	-	20.06	0.00	3489.06
	09/18/06	3509.12	-	19.82	0.00	3489.30
	11/30/06	3509.12	-	19.79	0.00	3489.33
MW-19	01/03/06	3507.28	18.05	18.23	0.18	3489.20
	01/09/06	3507.28	18.07	18.20	0.13	3489.19

TABLE 1
2006 GROUNDWATER ELEVATION DATA

TNM 97- 17
LEA COUNTY, NEW MEXICO
Plains Marketing, L.P.

WELL NUMBER	DATE MEASURED	TOP OF CASING ELEVATION	DEPTH TO PRODUCT	DEPTH TO WATER	PSH THICKNESS	CORRECTED GROU- WATER ELEVATION
MW-19	01/16/06	3507.28	18.01	18.23	0.22	3489.24
	01/23/06	3507.28	18.03	18.20	0.17	3489.22
	01/30/06	3507.28	18.01	18.21	0.20	3489.24
	02/06/06	3507.28	18.01	18.30	0.29	3489.23
	02/14/06	3507.28	18.00	18.23	0.23	3489.25
	02/21/06	3507.28	18.00	18.15	0.15	3489.26
	03/01/06	3507.28	17.99	18.20	0.21	3489.26
	03/06/06	3507.28	18.02	18.18	0.16	3489.24
	03/16/06	3507.28	18.01	18.13	0.12	3489.25
	03/17/06	3507.28	18.02	18.13	0.11	3489.24
	03/21/06	3507.28	18.03	18.15	0.12	3489.23
	03/28/06	3507.28	18.07	18.14	0.07	3489.20
	04/03/06	3507.28	17.96	18.02	0.06	3489.31
	04/17/06	3507.28	17.94	17.98	0.04	3489.33
	05/01/06	3507.28	17.92	18.00	0.08	3489.35
	05/08/06	3507.28	17.94	18.06	0.12	3489.32
	05/15/06	3507.28	18.00	18.19	0.19	3489.25
	05/30/06	3507.28	18.23	18.34	0.11	3489.03
	06/05/06	3507.28	18.25	18.35	0.10	3489.02
	06/12/06	3507.28	18.34	18.76	0.42	3488.88
	06/15/06	3507.28	18.39	18.68	0.29	3488.85
	06/19/06	3507.28	18.45	18.78	0.33	3488.78
	07/03/06	3507.28	18.56	18.88	0.32	3488.67
	07/10/06	3507.28	18.56	18.89	0.33	3488.67
	07/17/06	3507.28	18.46	18.63	0.17	3488.79
	07/26/06	3507.28	18.51	18.80	0.29	3488.73
	07/31/06	3507.28	18.55	18.93	0.38	3488.67
	08/07/06	3507.28	18.59	18.87	0.28	3488.65
	08/17/06	3507.28	18.62	18.91	0.29	3488.62
	08/21/06	3507.28	18.48	18.72	0.24	3488.76
	09/06/06	3507.28	18.25	19.38	1.13	3488.86
	09/11/06	3507.28	18.22	18.33	0.11	3489.04
	09/18/06	3507.28	18.19	18.26	0.07	3489.08
	09/25/06	3507.28	18.21	18.31	0.10	3489.06
	10/02/06	3507.28	18.18	18.29	0.11	3489.08
	10/09/06	3507.28	18.23	18.35	0.12	3489.03
	10/17/06	3507.28	18.20	18.35	0.15	3489.06
	10/23/06	3507.28	18.20	18.30	0.10	3489.07
	10/30/06	3507.28	18.19	19.26	1.07	3488.93
	11/06/06	3507.28	18.17	19.20	1.03	3488.96
	11/13/06	3507.28	18.36	19.12	0.76	3488.81
	11/20/06	3507.28	18.17	18.43	0.26	3489.07
	11/27/06	3507.28	18.35	19.10	0.75	3488.82

TABLE 1

2006 GROUNDWATER ELEVATION DATA

TNM 97- 17

LEA COUNTY, NEW MEXICO

Plains Marketing, L.P.

WELL NUMBER	DATE MEASURED	TOP OF CASING ELEVATION	DEPTH TO PRODUCT	DEPTH TO WATER	PSH THICKNESS	CORRECTED GROU- WATER ELEVATION
MW-19	11/30/06	3507.28	18.14	18.26	0.12	3489.12
	12/04/06	3507.28	18.19	18.36	0.17	3489.06
	12/12/06	3507.28	18.19	18.24	0.05	3489.08
	12/18/06	3507.28	18.20	18.39	0.19	3489.05
MW-20	03/16/06	3508.43	-	19.46	0.00	3488.97
	06/15/06	3508.43	-	19.84	0.00	3488.59
	09/18/06	3508.43	-	19.65	0.00	3488.78
	09/29/06	3508.43	-	19.66	0.00	3488.77
	11/30/06	3508.43	-	19.60	0.00	3488.83
MW-21	03/16/06	3506.98	-	18.42	0.00	3488.56
	06/15/06	3506.98	-	18.81	0.00	3488.17
	09/18/06	3506.98	-	18.64	0.00	3488.34
	09/29/06	3506.98	-	18.62	0.00	3488.36
	11/30/06	3506.98	-	18.62	0.00	3488.36
MW-22	03/16/06	3505.61	-	17.43	0.00	3488.18
	06/15/06	3505.61	-	17.83	0.00	3487.78
	09/18/06	3505.61	-	17.68	0.00	3487.93
	11/30/06	3505.61	-	17.66	0.00	3487.95
MW-23	03/16/06	3509.79	-	21.10	0.00	3488.69
	06/15/06	3509.79	-	21.51	0.00	3488.28
	09/18/06	3509.79	-	21.34	0.00	3488.45
	09/29/06	3509.79	-	21.31	0.00	3488.48
	11/30/06	3509.79	-	21.32	0.00	3488.47
MW-24	03/16/06	3509.68	-	21.37	0.00	3488.31
	06/15/06	3509.68	-	21.77	0.00	3487.91
	09/18/06	3509.68	-	21.62	0.00	3488.06
	11/30/06	3509.68	-	21.52	0.00	3488.16
MW-25	03/16/06	3509.65	-	20.70	0.00	3488.95
	06/15/06	3509.65	-	21.12	0.00	3488.53
	09/18/06	3509.65	-	20.93	0.00	3488.72
	11/30/06	3509.65	-	20.86	0.00	3488.79
MW-26	03/16/06	3507.49	-	18.44	0.00	3489.05
	06/15/06	3507.49	-	18.80	0.00	3488.69
	09/18/06	3507.49	-	18.60	0.00	3488.89
	09/29/06	3507.49	-	18.61	0.00	3488.88
	11/30/06	3507.49	-	18.56	0.00	3488.93

TABLE 1

2006 GROUNDWATER ELEVATION DATA

TNM 97- 17
LEA COUNTY, NEW MEXICO
Plains Marketing, L.P.

WELL NUMBER	DATE MEASURED	TOP OF CASING ELEVATION	DEPTH TO PRODUCT	DEPTH TO WATER	PSH THICKNESS	CORRECTED GROU- WATER ELEVATION
MW-27	03/16/06	3507.66	-	18.88	0.00	3488.78
	06/15/06	3507.66	-	19.24	0.00	3488.42
	09/18/06	3507.66	-	19.04	0.00	3488.62
	11/30/06	3507.66	-	19.05	0.00	3488.61
MW-28	03/16/06	3508.37	-	19.35	0.00	3489.02
	06/15/06	3508.37	-	19.69	0.00	3488.68
	09/18/06	3508.37	-	19.51	0.00	3488.86
	11/30/06	3508.37	-	19.46	0.00	3488.91
RW-1	03/16/06	3507.27	17.66	21.08	3.42	3489.10
	03/28/06	3507.27	17.90	18.98	1.08	3489.21
	04/03/06	3507.27	17.85	18.89	1.04	3489.26
	04/10/06	3507.27	17.84	18.34	0.50	3489.36
	04/17/06	3507.27	17.86	18.18	0.32	3489.36
	05/01/06	3507.27	17.87	18.06	0.19	3489.37
	05/08/06	3507.27	17.89	18.16	0.27	3489.34
	05/15/06	3507.27	17.93	18.40	0.47	3489.27
	06/05/06	3507.27	18.16	18.54	0.38	3489.05
	06/12/06	3507.27	18.34	18.61	0.27	3488.89
	06/15/06	3507.27	18.32	18.47	0.15	3488.93
	06/19/06	3507.27	18.48	18.71	0.23	3488.76
	07/03/06	3507.27	sheen	18.65	0.00	3488.62
	07/10/06	3507.27	18.49	18.68	0.19	3488.75
	07/17/06	3507.27	18.35	18.47	0.12	3488.90
	07/26/06	3507.27	18.42	18.65	0.23	3488.82
	07/31/06	3507.27	18.51	18.69	0.18	3488.73
	08/07/06	3507.27	18.52	18.71	0.19	3488.72
	08/17/06	3507.27	18.44	18.58	0.14	3488.81
	08/21/06	3507.27	18.35	18.52	0.17	3488.89
	09/06/06	3507.27	18.10	18.44	0.34	3489.12
	09/11/06	3507.27	18.13	18.46	0.33	3489.09
	09/18/06	3507.27	18.07	18.53	0.46	3489.13
	09/25/06	3507.27	18.04	18.78	0.74	3489.12
	10/02/06	3507.27	18.00	18.72	0.72	3489.16
	10/09/06	3507.27	18.07	18.84	0.77	3489.08
	10/17/06	3507.27	18.10	18.97	0.87	3489.04
	10/23/06	3507.27	18.04	18.08	0.04	3489.22
	10/30/06	3507.27	18.02	18.06	0.04	3489.24
	11/06/06	3507.27	18.12	18.71	0.59	3489.06
	11/13/06	3507.27	18.15	18.46	0.31	3489.07
	11/20/06	3507.27	18.13	18.34	0.21	3489.11

TABLE 1

2006 GROUNDWATER ELEVATION DATA

TNM 97- 17
LEA COUNTY, NEW MEXICO
Plains Marketing, L.P.

WELL NUMBER	DATE MEASURED	TOP OF CASING ELEVATION	DEPTH TO PRODUCT	DEPTH TO WATER	PSH THICKNESS	CORRECTED GROU- WATER ELEVATION
RW-1	11/27/06	3507.27	18.13	18.43	0.30	3489.10
	11/30/06	3507.27	18.10	18.26	0.16	3489.15
	12/04/06	3507.27	18.08	18.46	0.38	3489.13
	12/12/06	3507.27	18.16	18.49	0.33	3489.06
	12/18/06	3507.27	18.05	18.27	0.22	3489.19
RW-2	01/03/06	3507.45	17.80	18.00	0.20	3489.62
	01/09/06	3507.45	17.85	18.11	0.26	3489.56
	01/16/06	3507.45	17.80	17.93	0.13	3489.63
	01/23/06	3507.45	17.85	17.97	0.12	3489.58
	01/30/06	3507.45	17.89	17.95	0.06	3489.55
	02/06/06	3507.45	17.75	17.95	0.20	3489.67
	02/14/06	3507.45	17.85	17.99	0.14	3489.58
	02/21/06	3507.45	17.73	17.97	0.24	3489.68
	03/01/06	3507.45	17.73	18.00	0.27	3489.68
	03/06/06	3507.45	17.75	17.90	0.15	3489.68
	03/16/06	3507.45	17.89	18.18	0.29	3489.52
	03/21/06	3507.45	17.81	18.08	0.27	3489.60
	03/28/06	3507.45	17.83	18.04	0.21	3489.59
	04/03/06	3507.45	17.75	17.84	0.09	3489.69
	04/10/06	3507.45	17.66	17.71	0.05	3489.78
	04/17/06	3507.45	17.65	17.73	0.08	3489.79
	05/01/06	3507.45	17.71	17.75	0.04	3489.73
	05/08/06	3507.45	17.73	17.95	0.22	3489.69
	05/15/06	3507.45	17.80	17.91	0.11	3489.63
	05/30/06	3507.45	17.90	18.07	0.17	3489.52
	06/05/06	3507.45	18.02	18.76	0.74	3489.32
	06/12/06	3507.45	18.21	18.36	0.15	3489.22
	06/15/06	3507.45	18.12	18.19	0.07	3489.32
	06/19/06	3507.45	18.21	18.31	0.10	3489.23
	07/03/06	3507.45	18.21	18.32	0.11	3489.22
	07/10/06	3507.45	18.31	18.35	0.04	3489.13
	07/17/06	3507.45	sheen	18.13		3489.32
	07/26/06	3507.45	18.30	18.35	0.05	3489.14
	07/31/06	3507.45	18.29	18.34	0.05	3489.15
	08/07/06	3507.45	18.38	18.64	0.26	3489.03
	08/17/06	3507.45	17.19	17.25	0.06	3490.25
	08/21/06	3507.45	sheen	18.18		3489.27
	09/06/06	3507.45	17.88	17.92	0.04	3489.56
	09/11/06	3507.45	17.86	17.98	0.12	3489.57
	09/18/06	3507.45	17.84	17.93	0.09	3489.60
	09/25/06	3507.45	17.90	18.35	0.45	3489.48
	10/02/06	3507.45	17.88	18.32	0.44	3489.50

TABLE 1

2006 GROUNDWATER ELEVATION DATA

TNM 97- 17
LEA COUNTY, NEW MEXICO
Plains Marketing, L.P.

WELL NUMBER	DATE MEASURED	TOP OF CASING ELEVATION	DEPTH TO PRODUCT	DEPTH TO WATER	PSH THICKNESS	CORRECTED GROU- WATER ELEVATION
RW-2	10/09/06	3507.45	17.95	18.52	0.57	3489.41
	10/17/06	3507.45	17.90	18.40	0.50	3489.48
	10/23/06	3507.45	17.93	18.05	0.12	3489.50
	10/30/06	3507.45	17.91	18.03	0.12	3489.52
	11/06/06	3507.45	18.00	18.10	0.10	3489.44
	11/13/06	3507.45	18.01	18.07	0.06	3489.43
	11/20/06	3507.45	17.94	18.05	0.11	3489.49
	11/27/06	3507.45	17.99	18.05	0.06	3489.45
	11/30/06	3507.45	17.97	18.17	0.20	3489.45
	12/04/06	3507.45	17.96	18.01	0.05	3489.48
	12/12/06	3507.45	17.99	18.19	0.20	3489.43
	12/18/06	3507.45	17.89	18.00	0.11	3489.54
RW-3	01/03/06	3507.89	18.10	18.12	0.02	3489.79
	01/09/06	3507.89	18.17	18.18	0.01	3489.72
	01/16/06	3507.89	18.10	18.11	0.01	3489.79
	01/23/06	3507.89	sheen	18.13	0.00	3489.76
	01/30/06	3507.89	sheen	18.14	0.00	3489.75
	02/06/06	3507.89	sheen	18.14	0.00	3489.75
	02/14/06	3507.89	sheen	18.10	0.00	3489.79
	02/21/06	3507.89	sheen	18.11	0.00	3489.78
	03/01/06	3507.89	sheen	18.09	0.00	3489.80
	03/06/06	3507.89	sheen	18.10	0.00	3489.79
	03/15/06	3507.89	sheen	18.09	0.00	3489.80
	03/16/06	3507.89	18.13	18.14	0.01	3489.76
	03/21/06	3507.89	sheen	18.11	0.00	3489.78
	03/28/06	3507.89	sheen	18.12	0.00	3489.77
	04/03/06	3507.89	sheen	18.06	0.00	3489.83
	04/10/06	3507.89	sheen	18.05	0.00	3489.84
	04/17/06	3507.89	sheen	18.02	0.00	3489.87
	05/01/06	3507.89	sheen	18.01	0.00	3489.88
	05/08/06	3507.89	sheen	18.03	0.00	3489.86
	05/15/06	3507.89	sheen	18.13	0.00	3489.76
	06/05/06	3507.89	sheen	17.43	0.00	3490.46
	06/12/06	3507.89	sheen	18.44	0.00	3489.45
	06/15/06	3507.89	18.43	18.51	0.08	3489.45
	06/19/06	3507.89	sheen	18.56	0.00	3489.33
	07/03/06	3507.89	sheen	18.72	0.00	3489.17
	07/10/06	3507.89	sheen	18.70	0.00	3489.19
	07/17/06	3507.89	sheen	18.45	0.00	3489.44
	07/26/06	3507.89	18.60	18.65	0.05	3489.28
	07/31/06	3507.89	18.65	18.66	0.01	3489.24
	08/07/06	3507.89	sheen	17.94	0.00	3489.95

TABLE 1

2006 GROUNDWATER ELEVATION DATA

TNM 97- 17
LEA COUNTY, NEW MEXICO
Plains Marketing, L.P.

WELL NUMBER	DATE MEASURED	TOP OF CASING ELEVATION	DEPTH TO PRODUCT	DEPTH TO WATER	PSH THICKNESS	CORRECTED GROU- WATER ELEVATION
RW-3	08/17/06	3507.89	18.86	18.88	0.02	3489.03
	08/21/06	3507.89	sheen	18.56	0.00	3489.33
	09/06/06	3507.89	sheen	18.27	0.00	3489.62
	09/11/06	3507.89	sheen	18.27	0.00	3489.62
	09/18/06	3507.89	18.29	18.34	0.05	3489.59
	09/25/06	3507.89	18.29	18.41	0.12	3489.58
	10/02/06	3507.89	18.27	18.39	0.12	3489.60
	10/17/06	3507.89	18.26	18.38	0.12	3489.61
	10/23/06	3507.89	18.29	18.35	0.06	3489.59
	10/30/06	3507.89	18.27	18.34	0.07	3489.61
	11/06/06	3507.89	18.29	18.52	0.23	3489.57
	11/13/06	3507.89	18.30	18.48	0.18	3489.56
	11/20/06	3507.89	18.27	18.44	0.17	3489.59
	11/27/06	3507.89	18.27	18.46	0.19	3489.59
	11/30/06	3507.89	18.25	18.27	0.02	3489.64
	12/04/06	3507.89	18.30	18.67	0.37	3489.53
	12/12/06	3507.89	18.27	18.64	0.37	3489.56
RW-4	01/03/06	3507.22	sheen	17.46	0.00	3489.76
	01/09/06	3507.22	sheen	17.47	0.00	3489.75
	01/16/06	3507.22	sheen	17.56	0.00	3489.66
	01/23/06	3507.22	sheen	17.39	0.00	3489.83
	01/30/06	3507.22	sheen	17.38	0.00	3489.84
	02/06/06	3507.22	sheen	17.33	0.00	3489.89
	02/14/06	3507.22	sheen	17.33	0.00	3489.89
	02/21/06	3507.22	sheen	17.29	0.00	3489.93
	03/01/06	3507.22	sheen	17.27	0.00	3489.95
	03/06/06	3507.22	sheen	17.29	0.00	3489.93
	03/15/06	3507.22	sheen	17.20	0.00	3490.02
	03/16/06	3507.22	17.28	17.29	0.01	3489.94
	03/21/06	3507.22	sheen	17.34	0.00	3489.88
	03/28/06	3507.22	sheen	17.36	0.00	3489.86
	04/03/06	3507.22	sheen	17.29	0.00	3489.93
	04/17/06	3507.22	sheen	17.20	0.00	3490.02
	05/01/06	3507.22	sheen	17.18	0.00	3490.04
	05/08/06	3507.22	sheen	17.23	0.00	3489.99
	05/15/06	3507.22	sheen	17.33	0.00	3489.89
	05/30/06	3507.22	17.50	17.51	0.01	3489.72
	06/05/06	3507.22	sheen	17.66	0.00	3489.56
	06/12/06	3507.22	17.87	17.88	0.01	3489.35
	06/15/06	3507.22	17.71	17.82	0.11	3489.49
	06/19/06	3507.22	17.82	17.88	0.06	3489.39
	07/03/06	3507.22	17.90	17.91	0.01	3489.32

TABLE 1

2006 GROUNDWATER ELEVATION DATA

TNM 97- 17
LEA COUNTY, NEW MEXICO
Plains Marketing, L.P.

WELL NUMBER	DATE MEASURED	TOP OF CASING ELEVATION	DEPTH TO PRODUCT	DEPTH TO WATER	PSH THICKNESS	CORRECTED GROU- WATER ELEVATION
RW-4	07/10/06	3507.22	17.89	17.90	0.01	3489.33
	07/17/06	3507.22	sheen	17.76	0.00	3489.46
	07/26/06	3507.22	17.89	17.90	0.01	3489.33
	07/31/06	3507.22	sheen	17.94	0.00	3489.28
	08/07/06	3507.22	17.97	18.01	0.04	3489.24
	08/17/06	3507.22	sheen	17.89	0.00	3489.33
	08/21/06	3507.22	sheen	17.82	0.00	3489.40
	09/06/06	3507.22	19.52	19.53	0.01	3487.70
	09/11/06	3507.22	sheen	18.54	0.00	3488.68
	09/18/06	3507.22	17.49	17.51	0.02	3489.73
	09/25/06	3507.22	17.50	17.56	0.06	3489.71
	10/02/06	3507.22	17.46	17.53	0.07	3489.75
	10/09/06	3507.22	17.58	17.61	0.03	3489.64
	10/17/06	3507.22	17.59	17.60	0.01	3489.63
	10/23/06	3507.22	17.50	17.52	0.02	3489.72
	10/30/06	3507.22	17.48	17.51	0.03	3489.74
	11/06/06	3507.22	sheen	17.53	0.00	3489.69
	11/13/06	3507.22	sheen	17.54	0.00	3489.68
	11/20/06	3507.22	17.45	17.49	0.04	3489.76
	11/27/06	3507.22	sheen	17.52	0.00	3489.70
	11/30/06	3507.22	17.63	17.64	0.01	3489.59
	12/04/06	3507.22	sheen	17.53	0.00	3489.69
	12/12/06	3507.22	sheen	17.56	0.00	3489.66
	12/18/06	3507.22	17.48	17.64	0.16	3489.72
RW-5	01/03/06	3506.91	17.22	17.88	0.66	3489.59
	01/09/06	3506.91	17.31	17.64	0.33	3489.55
	01/16/06	3506.91	17.25	17.60	0.35	3489.61
	01/23/06	3506.91	17.29	17.60	0.31	3489.57
	01/30/06	3506.91	17.32	17.63	0.31	3489.54
	02/06/06	3506.91	17.28	17.68	0.40	3489.57
	02/14/06	3506.91	17.29	17.67	0.38	3489.56
	02/21/06	3506.91	17.25	17.75	0.50	3489.59
	02/28/06	3506.91	17.24	17.66	0.42	3489.61
	03/06/06	3506.91	17.28	17.62	0.34	3489.58
	03/16/06	3506.91	17.30	17.57	0.27	3489.57
	03/17/06	3506.91	17.28	17.55	0.27	3489.59
	03/21/06	3506.91	17.28	17.60	0.32	3489.58
	03/28/06	3506.91	17.31	17.59	0.28	3489.56
	04/03/06	3506.91	17.18	17.48	0.30	3489.69
	04/10/06	3506.91	17.25	17.53	0.28	3489.62
	04/17/06	3506.91	17.21	17.50	0.29	3489.66
	05/01/06	3506.91	17.18	17.53	0.35	3489.68

TABLE 1

2006 GROUNDWATER ELEVATION DATA

TNM 97- 17
LEA COUNTY, NEW MEXICO
Plains Marketing, L.P.

WELL NUMBER	DATE MEASURED	TOP OF CASING ELEVATION	DEPTH TO PRODUCT	DEPTH TO WATER	PSH THICKNESS	CORRECTED GROU- WATER ELEVATION
RW-5	05/08/06	3506.91	17.20	17.71	0.51	3489.63
	05/15/06	3506.91	17.25	17.83	0.58	3489.57
	05/30/06	3506.91	17.37	18.32	0.95	3489.40
	06/05/06	3506.91	17.48	18.18	0.70	3489.33
	06/12/06	3506.91	17.62	17.97	0.35	3489.24
	06/15/06	3506.91	17.68	17.85	0.17	3489.20
	06/19/06	3506.91	17.71	18.00	0.29	3489.16
	07/03/06	3506.91	17.86	18.16	0.30	3489.01
	07/10/06	3506.91	17.84	18.12	0.28	3489.03
	07/17/06	3506.91	17.69	18.04	0.35	3489.17
	07/26/06	3506.91	17.74	18.30	0.56	3489.09
	07/31/06	3506.91	17.79	18.26	0.47	3489.05
	08/07/06	3506.91	17.89	18.31	0.42	3488.96
	08/17/06	3506.91	17.75	18.38	0.63	3489.07
	08/21/06	3506.91	17.74	18.40	0.66	3489.07
	09/06/06	3506.91	17.32	18.14	0.82	3489.47
	09/11/06	3506.91	17.34	17.85	0.51	3489.49
	09/18/06	3506.91	17.42	17.76	0.34	3489.44
	09/25/06	3506.91	17.40	18.00	0.60	3489.42
	10/02/06	3506.91	17.36	17.97	0.61	3489.46
	10/23/06	3506.91	17.35	18.50	1.15	3489.39
	10/30/06	3506.91	17.32	18.49	1.17	3489.41
	11/06/06	3506.91	17.42	18.53	1.11	3489.32
	11/13/06	3506.91	17.46	17.98	0.52	3489.37
	11/20/06	3506.91	17.40	17.97	0.57	3489.42
	11/27/06	3506.91	17.44	17.97	0.53	3489.39
	11/30/06	3506.91	17.44	17.95	0.51	3489.39
	12/04/06	3506.91	17.55	18.00	0.45	3489.29
	12/12/06	3509.91	17.42	18.26	0.84	3492.36
	12/18/06	3509.91	17.45	17.76	0.31	3492.41
RW-6	01/03/06	3507.45	18.04	18.90	0.86	3489.28
	01/09/06	3507.45	18.05	18.60	0.55	3489.32
	01/16/06	3507.45	18.03	18.81	0.78	3489.30
	01/23/06	3507.45	18.07	18.69	0.62	3489.29
	01/30/06	3507.45	18.10	18.65	0.55	3489.27
	02/06/06	3507.45	18.03	18.79	0.76	3489.31
	02/14/06	3507.45	18.05	18.53	0.48	3489.33
	02/21/06	3507.45	18.00	18.57	0.57	3489.36
	03/01/06	3507.45	17.98	18.60	0.62	3489.38
	03/06/06	3507.45	18.05	18.59	0.54	3489.32
	03/16/06	3507.45	18.05	18.27	0.22	3489.37
	03/17/06	3507.45	18.05	18.21	0.16	3489.38

TABLE 1
2006 GROUNDWATER ELEVATION DATA

TNM 97- 17
LEA COUNTY, NEW MEXICO
Plains Marketing, L.P.

WELL NUMBER	DATE MEASURED	TOP OF CASING ELEVATION	DEPTH TO PRODUCT	DEPTH TO WATER	PSH THICKNESS	CORRECTED GROU- WATER ELEVATION
RW-6	03/21/06	3507.45	18.10	18.13	0.03	3489.35
	03/28/06	3507.45	18.07	18.24	0.17	3489.35
	04/03/06	3507.45	17.99	18.34	0.35	3489.41
	04/10/06	3507.45	17.94	18.35	0.41	3489.45
	04/17/06	3507.45	17.93	18.41	0.48	3489.45
	05/01/06	3507.45	17.94	18.55	0.61	3489.42
	05/08/06	3507.45	17.97	18.42	0.45	3489.41
	05/15/06	3507.45	18.05	18.62	0.57	3489.31
	05/30/06	3507.45	18.21	19.47	1.26	3489.05
	06/05/06	3507.45	18.23	18.91	0.68	3489.12
	06/12/06	3507.45	18.38	19.01	0.63	3488.98
	06/15/06	3507.45	18.46	18.83	0.37	3488.93
	06/19/06	3507.45	18.87	18.91	0.04	3488.57
	07/03/06	3507.45	18.66	19.08	0.42	3488.73
	07/10/06	3507.45	18.59	19.10	0.51	3488.78
	07/17/06	3507.45	18.46	18.97	0.51	3488.91
	07/26/06	3507.45	18.53	19.25	0.72	3488.81
	07/31/06	3507.45	18.58	19.25	0.67	3488.77
	08/07/06	3507.45	18.61	19.16	0.55	3488.76
	08/17/06	3507.45	18.53	19.27	0.74	3488.81
	08/21/06	3507.45	18.48	19.02	0.54	3488.89
	09/06/06	3507.45	18.15	18.43	0.28	3489.26
	09/11/06	3507.45	18.29	18.97	0.68	3489.06
	09/18/06	3507.45	18.18	18.71	0.53	3489.19
	09/25/06	3507.45	18.17	18.93	0.76	3489.17
	10/02/06	3507.45	18.14	18.90	0.76	3489.20
	10/09/06	3507.45	18.15	19.00	0.85	3489.17
	10/17/06	3507.45	18.12	19.28	1.16	3489.16
	10/23/06	3507.45	18.14	19.29	1.15	3489.14
	10/30/06	3507.45	18.12	19.27	1.15	3489.16
	11/06/06	3507.45	18.13	19.11	0.98	3489.17
	11/13/06	3507.45	18.19	18.65	0.46	3489.19
	11/20/06	3507.45	18.23	18.65	0.42	3489.16
	11/27/06	3507.45	18.18	18.61	0.43	3489.21
	11/30/06	3507.45	18.20	18.65	0.45	3489.18
	12/04/06	3507.45	18.17	18.76	0.59	3489.19
	12/12/06	3507.45	18.20	18.77	0.57	3489.16
	12/18/06	3507.45	18.05	18.61	0.56	3489.32

Elevations based on the North American Vertical Datum of 1929.

TABLE 2

2006 CONCENTRATIONS OF BTEX IN GROUNDWATER

PLAINS MARKETING, L.P.
TNM 97-17
LEA COUNTY, NM

All concentrations are reported in mg/L

SAMPLE LOCATION	SAMPLE DATE	SW 846-8012B, 5030				
		BENZENE	TOLUENE	ETHYL-BENZENE	m, p, -XYLENES	o -XYLENE
MW-1	03/16/06	Not Sampled on Current Sample Schedule				
	06/15/06	Not Sampled on Current Sample Schedule				
	09/30/06	Not Sampled on Current Sample Schedule				
	12/01/06	<0.01	<0.01	<0.01	<0.01	
MW-2	03/16/06	Not Sampled on Current Sample Schedule				
	06/15/06	Not Sampled on Current Sample Schedule				
	09/30/06	Not Sampled on Current Sample Schedule				
	12/01/06	<0.02	<0.02	<0.02	<0.02	
MW-3	03/16/06	Not Sampled on Current Sample Schedule				
	06/15/06	Not Sampled on Current Sample Schedule				
	09/30/06	Not Sampled on Current Sample Schedule				
	12/01/06	<0.02	<0.02	<0.02	0.0466	
MW-4	03/16/06	Not Sampled Due to PSH in Well				
	06/15/06	Not Sampled Due to PSH in Well				
	09/30/06	Not Sampled Due to PSH in Well				
	12/01/06	Not Sampled Due to PSH in Well				
MW-5	03/16/06	0.0161	<0.005	0.0096	<0.005	
	06/15/06	0.0077	<0.005	<0.005	<0.005	
	09/30/06	<0.001	<0.001	0.009	0.0097	
	12/01/06	0.3580	<0.01	0.13	<0.01	
MW-6	03/16/06	Not Sampled Due to PSH in Well				
	06/15/06	Not Sampled Due to PSH in Well				
	09/30/06	Not Sampled Due to PSH in Well				
	12/01/06	Not Sampled Due to PSH in Well				
MW-7	03/16/06	Not Sampled Due to PSH in Well				
	06/15/06	Not Sampled Due to PSH in Well				
	09/30/06	Not Sampled Due to PSH in Well				
	12/01/06	Not Sampled Due to PSH in Well				
MW-8	03/16/06	Not Sampled Due to PSH in Well				
	06/15/06	Not Sampled Due to PSH in Well				
	09/30/06	Not Sampled Due to PSH in Well				
	12/01/06	Not Sampled Due to PSH in Well				

TABLE 2

2006 CONCENTRATIONS OF BTEX IN GROUNDWATER

PLAINS MARKETING, L.P.
TNM 97-17
LEA COUNTY, NM

All concentrations are reported in mg/L

SAMPLE LOCATION	SAMPLE DATE	SW 846-8012B, 5030				
		BENZENE	TOLUENE	ETHYL-BENZENE	m, p, -XYLENES	o -XYLENE
MW-9	03/16/06	0.0709	<0.005	0.023	<0.005	
	06/15/06	0.0205	<0.005	<0.005	<0.005	
	09/30/06	<0.001	<0.001	<0.001	<0.001	
	12/01/06	<0.01	<0.01	<0.01	<0.01	
MW-10	03/16/06	0.056	<0.01	0.0751	<0.01	
	06/15/06	Not Sampled Due to PSH in Well				
	09/30/06	<0.001	<0.001	0.0379	0.0035	
	12/01/06	0.027	<0.01	0.0834	<0.01	
MW-11	03/16/06	Not Sampled on Current Sample Schedule				
	06/15/06	Not Sampled on Current Sample Schedule				
	09/30/06	Not Sampled on Current Sample Schedule				
	12/01/06	<0.01	<0.01	<0.01	<0.01	
MW-12	03/16/06	Not Sampled on Current Sample Schedule				
	06/15/06	Not Sampled on Current Sample Schedule				
	09/30/06	Not Sampled on Current Sample Schedule				
	12/01/06	<0.01	<0.01	<0.01	0.0336	
MW-13	03/16/06	Not Sampled on Current Sample Schedule				
	06/15/06	Not Sampled on Current Sample Schedule				
	09/30/06	Not Sampled on Current Sample Schedule				
	12/01/06	<0.02	<0.02	<0.02	<0.02	
MW-14	03/16/06	Not Sampled Due to PSH in Well				
	06/15/06	Not Sampled Due to PSH in Well				
	09/30/06	Not Sampled Due to PSH in Well				
	12/01/06	Not Sampled Due to PSH in Well				
MW-15	03/16/06	Not Sampled Due to PSH in Well				
	06/15/06	Not Sampled Due to PSH in Well				
	09/30/06	Not Sampled Due to PSH in Well				
	12/01/06	Not Sampled Due to PSH in Well				
MW-16	03/16/06	Not Sampled on Current Sample Schedule				
	06/15/06	Not Sampled on Current Sample Schedule				
	09/30/06	Not Sampled on Current Sample Schedule				
	12/01/06	<0.02	<0.02	<0.02	<0.02	

TABLE 2

2006 CONCENTRATIONS OF BTEX IN GROUNDWATER

PLAINS MARKETING, L.P.
TNM 97-17
LEA COUNTY, NM

All concentrations are reported in mg/L

SAMPLE LOCATION	SAMPLE DATE	SW 846-8012B, 5030				
		BENZENE	TOLUENE	ETHYL-BENZENE	m, p, -XYLENES	o -XYLENE
MW-17	03/16/06	Not Sampled on Current Sample Schedule				
	06/15/06	Not Sampled on Current Sample Schedule				
	09/30/06	Not Sampled on Current Sample Schedule				
	12/01/06	<0.02	<0.02	<0.02	<0.02	
MW-18	03/16/06	Not Sampled on Current Sample Schedule				
	06/15/06	Not Sampled on Current Sample Schedule				
	09/30/06	Not Sampled on Current Sample Schedule				
	12/01/06	<0.01	<0.01	<0.01	<0.01	
MW-19	03/16/06	Not Sampled Due to PSH in Well				
	06/15/06	Not Sampled Due to PSH in Well				
	09/30/06	Not Sampled Due to PSH in Well				
	12/01/06	Not Sampled Due to PSH in Well				
MW-20	03/16/06	0.1000	<0.005	0.0232	<0.005	
	06/15/06	0.0808	<0.02	0.0343	<0.02	
	09/30/06	<0.001	<0.001	0.0056	0.0109	
	12/01/06	0.2920	<0.01	0.1240	<0.01	
MW-21	03/16/06	Not Sampled				
	06/15/06	<0.02	<0.02	<0.02	<0.02	
	09/30/06	0.0059	<0.005	<0.005	0.011	
	12/01/06	0.3280	<0.01	0.113	<0.01	
MW-22	03/16/06	Not Sampled on Current Sample Schedule				
	06/15/06	0.001	<0.001	<0.001	0.0011	
	09/30/06	Not Sampled on Current Sample Schedule				
	12/01/06	0.312	<0.01	0.0793	<0.01	
MW-23	03/16/06	Not Sampled on Current Sample Schedule				
	06/15/06	<0.001	<0.001	<0.001	<0.001	
	09/30/06	<0.001	<0.001	0.0121	0.0118	
	12/01/06	0.0236	<0.01	0.0745	<0.01	
MW-24	03/16/06	Not Sampled on Current Sample Schedule				
	06/15/06	Not Sampled on Current Sample Schedule				
	09/30/06	Not Sampled on Current Sample Schedule				
	12/01/06	<0.01	<0.01	<0.01	<0.01	

TABLE 2

2006 CONCENTRATIONS OF BTEX IN GROUNDWATER

PLAINS MARKETING, L.P.
TNM 97-17
LEA COUNTY, NM

All concentrations are reported in mg/L

SAMPLE LOCATION	SAMPLE DATE	SW 846-8012B, 5030				
		BENZENE	TOLUENE	ETHYL-BENZENE	m, p, -XYLENES	o -XYLENE
MW-25	03/16/06	Not Sampled on Current Sample Schedule				
	06/15/06	<0.001	<0.001	<0.001	<0.001	
	09/30/06	Not Sampled on Current Sample Schedule				
	12/01/06	<0.005	<0.005	<0.005	<0.005	
MW-26	03/16/06	Not Sampled				
	06/15/06	0.0061	<0.001	0.0032	0.0070	
	09/30/06	<0.001	<0.001	0.0083	0.0130	
	12/01/06	0.3240	<0.001	0.1190	<0.001	
MW-27	03/16/06	Not Sampled on Current Sample Schedule				
	06/15/06	<0.001	<0.001	0.0010	<0.001	
	09/30/06	Not Sampled on Current Sample Schedule				
	12/01/06	<0.01	<0.01	<0.01	<0.01	
MW-28	03/16/06	Not Sampled on Current Sample Schedule				
	06/15/06	Not Sampled on Current Sample Schedule				
	09/30/06	Not Sampled on Current Sample Schedule				
	12/01/06	<0.01	<0.01	<0.01	<0.01	
RW-1	03/16/06	Not Sampled Due to PSH in Well				
	06/15/06	Not Sampled Due to PSH in Well				
	09/30/06	Not Sampled Due to PSH in Well				
	12/01/06	Not Sampled Due to PSH in Well				
RW-2	03/16/06	Not Sampled Due to PSH in Well				
	06/15/06	Not Sampled Due to PSH in Well				
	09/30/06	Not Sampled Due to PSH in Well				
	12/01/06	Not Sampled Due to PSH in Well				
RW-3	03/16/06	0.0910	<0.001	0.0383	0.0064	
	06/15/06	Not Sampled Due to PSH in Well				
	09/30/06	Not Sampled Due to PSH in Well				
	12/01/06	Not Sampled Due to PSH in Well				
RW-4	03/16/06	0.266	<0.001	0.0595	0.0459	
	06/15/06	Not Sampled Due to PSH in Well				
	09/30/06	Not Sampled Due to PSH in Well				
	12/01/06	Not Sampled Due to PSH in Well				

TABLE 2

2006 CONCENTRATIONS OF BTEX IN GROUNDWATER

PLAINS MARKETING, L.P.
TNM 97-17
LEA COUNTY, NM

All concentrations are reported in mg/L

SAMPLE LOCATION	SAMPLE DATE	SW 846-8012B, 5030				
		BENZENE	TOLUENE	ETHYL- BENZENE	m, p, - XYLENES	o - XYLENE
RW-5	03/16/06	Not Sampled Due to PSH in Well				
	06/15/06	Not Sampled Due to PSH in Well				
	09/30/06	Not Sampled Due to PSH in Well				
	12/01/06	Not Sampled Due to PSH in Well				
RW-6	03/16/06	Not Sampled Due to PSH in Well				
	06/15/06	Not Sampled Due to PSH in Well				
	09/30/06	Not Sampled Due to PSH in Well				
	12/01/06	Not Sampled Due to PSH in Well				



APPENDICES

APPENDIX A:
Release Notification and Corrective Action
(Form C-141)

District I - (505) 393-6161
P.O. Box 1980
Hobbs, NM 88241-1980
District II - (505) 748-1283
811 South First
Artesia, NM 88210
District III - (505) 334-6178
1000 Rio Brazos Road
Aztec, NM 87410
District IV - (505) 827-7131

State of New Mexico

Enc Minerals and Natural Resources Department
Oil Conservation Division
2040 South Pacheco Street
Santa Fe, New Mexico 87505
(505) 827-7131

Form C-141
Originated 2/13/97

Submit 2 copies to
Appropriate District
Office in accordance
with Rule 116 on
back side of form

Release Notification and Corrective Action

OPERATOR

☒ Initial Report ☐ Final Report

Name Texas-New Mexico Pipe Line Company	Contact Edwin H. Gripp
Address Box 60028, San Angelo, TX 76906	Telephone No. (915) 947-9000
Facility Name <i>Vaccinium Jct to Gal Mains Line</i>	Facility Type <i>pipe line</i>
Surface Owner <i>Millard Bush</i>	Mineral Owner
Lease No.	

LOCATION OF RELEASE

Unit Letter	Section	Township	Range	Feet from the	North/South Line	Feet from the	East/West Line	County
	<i>21</i>	<i>20S</i>	<i>37E</i>					<i>Lea</i>

NATURE OF RELEASE

Type of Release <i>Down crude</i>	Volume of Release <i>170 barrels</i>	Volume Recovered <i>160 barrels</i>
Source of Release <i>8" pipeline on scraper trap beyond</i>	Date and Hour of Occurrence <i>Unknown</i>	Date and Hour of Discovery <i>8-13-97 3:00 PM</i>
Was Immediate Notice Given? <input checked="" type="checkbox"/> Yes <input type="checkbox"/> No <input type="checkbox"/> Not Required	If YES, To Whom? <i>Debra T. Ireland</i>	
By Whom? <i>Johnny W. Chapman</i>	Date and Hour <i>8-13-97 4:45 pm CST</i>	
Was a Watercourse Reached? <input type="checkbox"/> Yes <input checked="" type="checkbox"/> No	If YES, Volume Impacting the Watercourse.	

If a Watercourse was Impacted, Describe Fully.*

Describe Cause of Problem and Remedial Action Taken.*

*External Corrosion
Leak successfully clamped off.*

Describe Area Affected and Cleanup Action Taken.*

*Approximately 360 sq. ft. scraper trap area.
Contaminated soil was removed*

Describe General Conditions Prevailing (Temperature, Precipitation, etc.).*

Clear 90°

I hereby certify that the information given above is true and complete to the best of my knowledge and belief.

Signature: *E. H. Gripp*

Printed Name: Edwin H. Gripp

Title: District Manager

Date: 8-14-97

Phone: 915-947-9001

OIL CONSERVATION DIVISION

Approved by
District Supervisor

Approval Date:

Expiration Date:

Conditions of Approval:

Attached ☐

* Attach Additional Sheets If Necessary

State Corp. Commission
Pipe Line Division

Hazardous Waste Section
NM Environmental Improvement Div.

TNM-97-17

JWC IAS