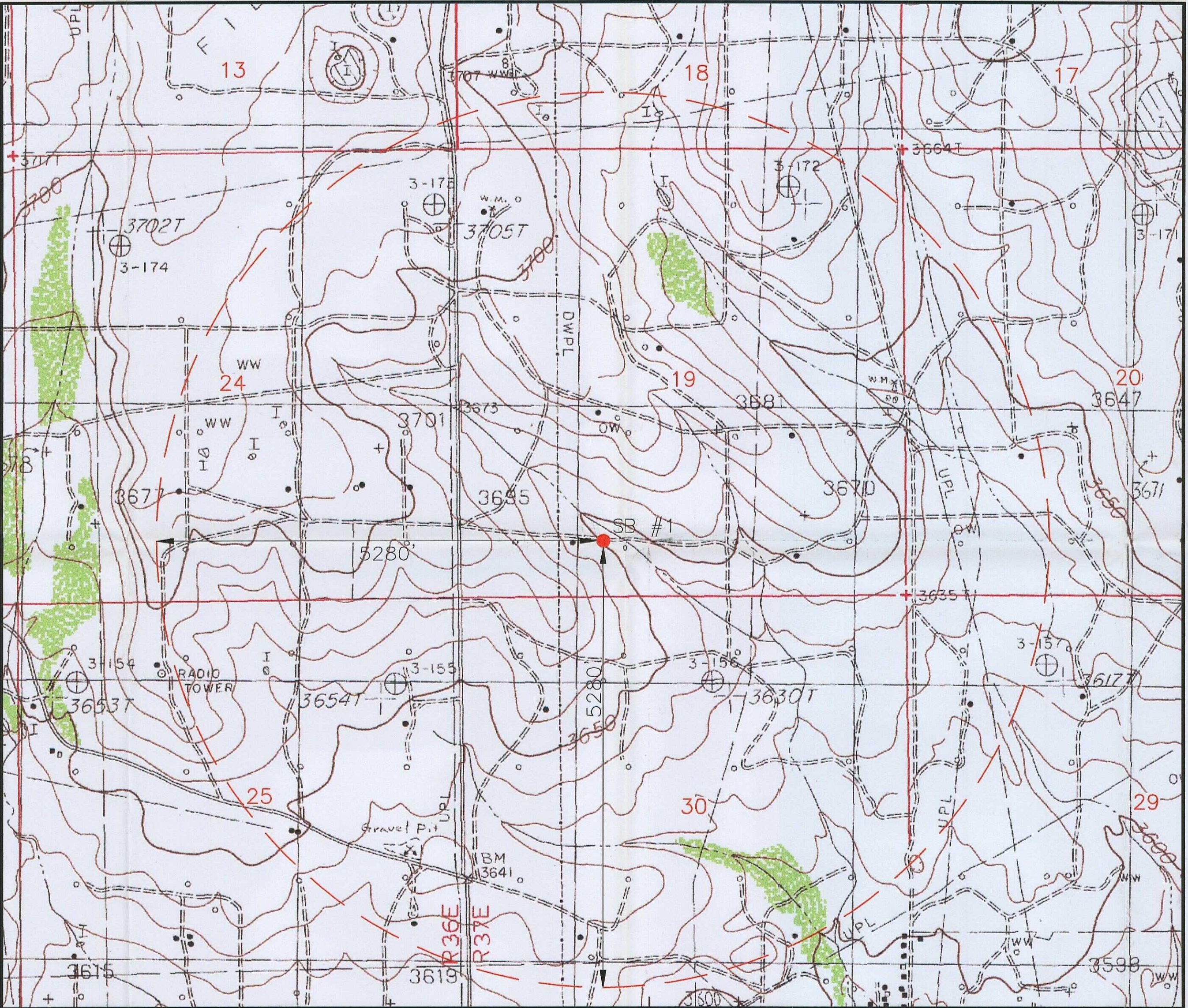


SECTION 19, TOWNSHIP 19 SOUTH, RANGE 37 EAST, N.M.P.M.,
LEA COUNTY, NEW MEXICO.

AP - 057

STAGE 1
ABATEMENT PLAN

DATE:
OCT 2006



TOPO - MONUMENT NORTH
SECTIONS 17, 18, 19, 20, 29 & 30, TOWNSHIP 19 SOUTH, RANGE 37 EAST &
SECTIONS 13, 24 & 25, TOWNSHIP 19 SOUTH, RANGE 36 EAST.

PROVIDING SURVEYING SERVICES
SINCE 1986
JOHN WEST SURVEYING COMPANY
412 N. DAL PASO
HOBBES, N.M. 88240
(505) 393-3117

1000 0 1000 2000 FEET
Scale: 1"=1000'

BBC INTERNATIONAL, INC.

FIGURE 6
HESS TEXACO NEW MEXICO "G" STATE BATTERY #22
PREPARE PLAT OF 1.0 MILE
RADIUS AROUND THE SB #1 IN
SECTION 19, TOWNSHIP 19 SOUTH, RANGE 37 EAST,
N.M.P.M., LEA COUNTY, NEW MEXICO

Survey Date: 7/21/06	Sheet 1 of 1 Sheets
W.O. Number: 06.13.1179	Drawn By: LA
Date: 8/21/06	DISK:CD#5 06131360